

Missing Burnett Photo Nos.

- 1-100
- 101-102-3
- 104-106
- 107-114
- 115-116 117
- 118-125 126-7 128
- 129-173 174 175-177
- 180 181 182-3
- 184-6 187
- 188-195
- 196-203 HFS removed for printers. also these red numbers
- 204-5 206-8 209 210 211 212 213-15 216
- 217-221
- 222 } removed by HFS for printing
- 223-229
- 230-233
- 234-241
- 242-252
- 253-302
- 303-326 (Probably the last record)
- 329, 330

1-100

101-102-3

1-6

107-116

117

118-128

129-173

804-1 to 35 } OK, complete
805-807

Missing from the Regular Series.

1-100	
107-144	38
128	1
174	1
181	1
187	1
196-203	8
209	1
211	
213-15	3
217-221	5
223-229	7
234-241	8
Total missing	85

* There are photos not numbered, but they are probably something else.

And also several small series of nos.

Block Numbers are Mounted
Green numbers to be mounted.

Red Numbers Missing, Mar 16, 1943 after going through Burnett staff from Vanet and photos in the back room.

LS Jr.

Found, and

Not Mounted

Mounted

Card. 707; 805/7; 808/11

118-125

How mounted, with card ref. in brackets.

129-173

Chocolá (101-111)



Fig 7

111

for catalog p. 7

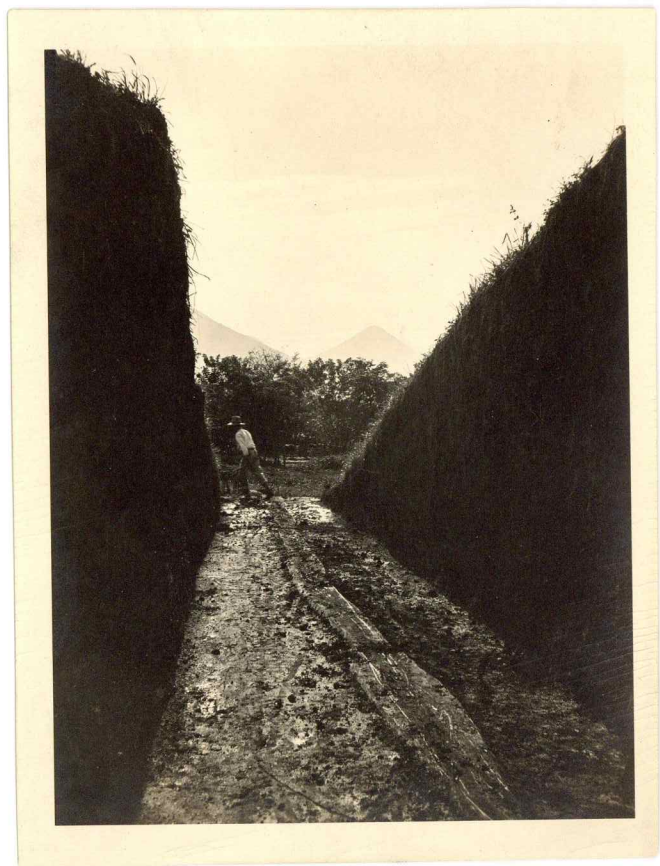
176735

Fig 6

110

for catalog p. 6

176736



108

for catalog p. v

Fig 4

Fig 5

109

for catalog p. v

Fig 3

107

for catalog p. 4



101

for catalog, page 1
(Catalogue 787-803)

Fig 2

~~103~~

for catalog p. 3

Mound B

102

for catalog, page 2
Fig 1

105

for catalog p. 3



104

for catalog p. 3

106

for catalog p. 3

298583



115

Chocolá



116

Chocolá

UNIVERSITY INTRAMURAL CORRESPONDENCE

TO Dr. Vaillant

FROM Mason

DATE July 9, 1944

SUBJECT Data on problematical specimens.

L-149-1. Burkitt original No. 803. From his original notes: Lent to the Museum by Mr. Henry Kummerfeldt (see 788). From the neighbourhood of Kiche. The rude stone idol of foto 117 (appended). The stone is a soft, cream coloured tufa which abounds in Kiche. The outside is dark and dirty, and no doubt the image has been kept and worshipped with incense by the modern Indians, as their custom is.

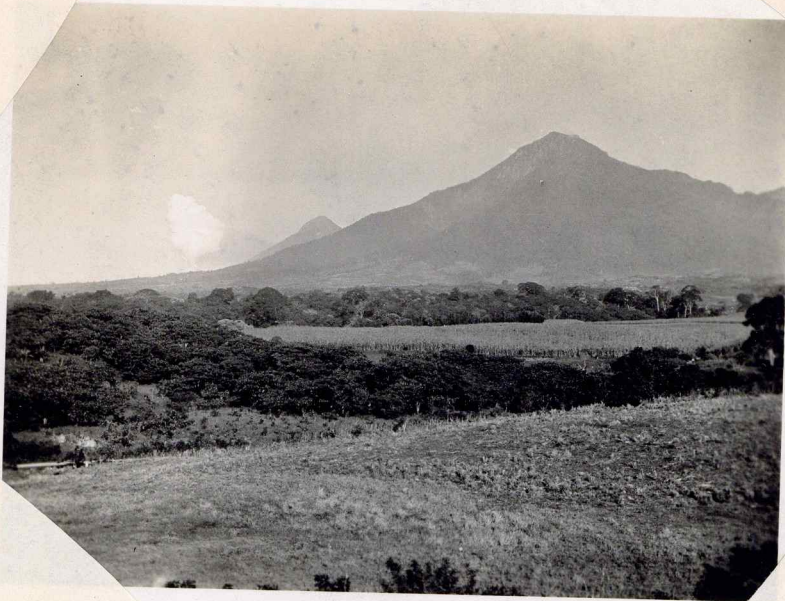
12704. Guatemala, Santa Lucia Escuintla. Image of man with bowl, pottery. Partly restored, 1938. Bears label: Exposicion Historico-Americana de Madrid (1893); also exhibited at Chicago World's Fair, 1893. Purchased there by Charles H. Cramp & presented as gift together with other Guatemala specimens.



117

for catalog
under number 803

Chocolá or near.



118
(cod. 787/8)

"Prospect view
same as 101"
F

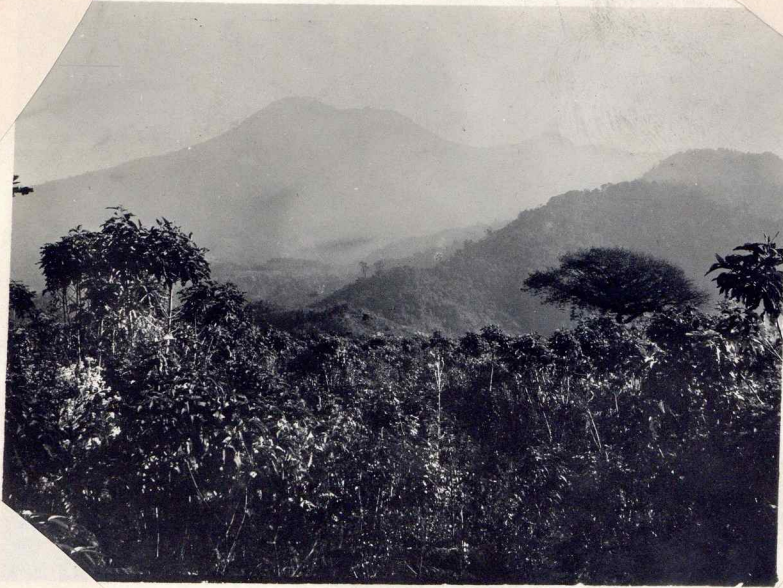
View of 101 (787 cod): looking N.W.
Volcanoes: left "San Mateo";
right Sumit.
This is surely Chocolá neighborhood.



119
(")

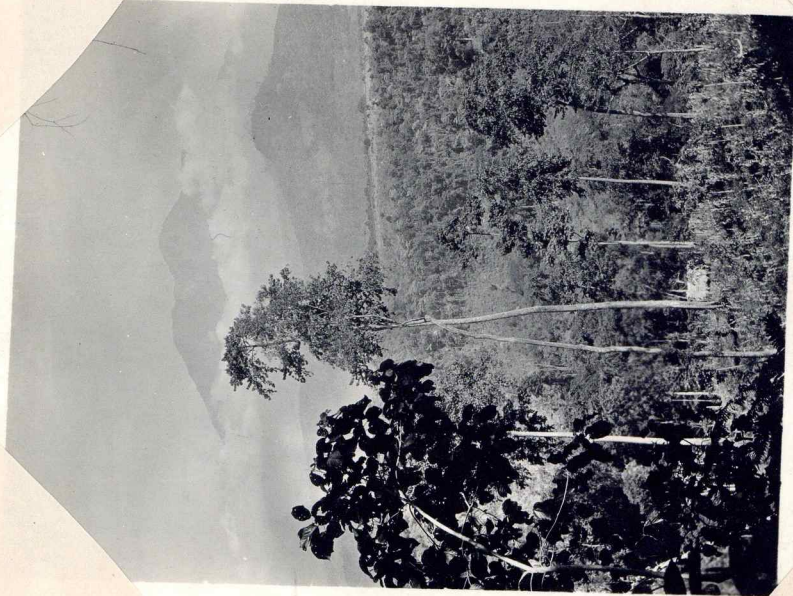
View down one of the gullies
(which fail to show in 118).

Suchiote region



120

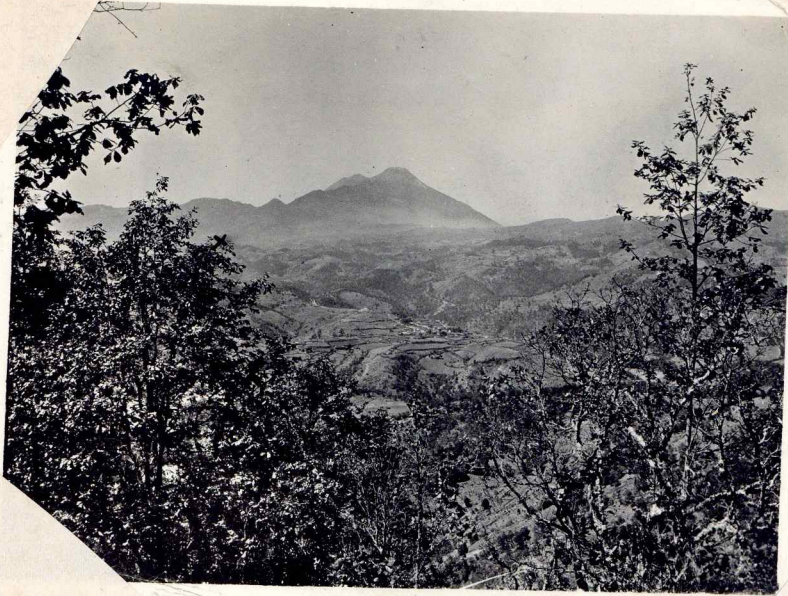
Tajumulco volcano.
(Suchiote region)



121

looking across Suchiote (view obscured here,
in bush) to Volcano Tacaná.

See Q.D. 805/7



175834

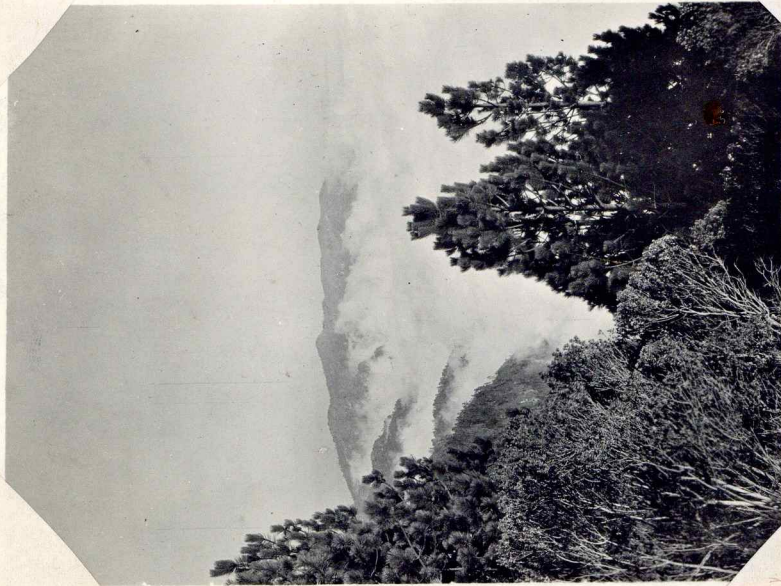
122

Vol. Taju milco, from inland side.

looking S.W.

Secondary peak, Cerro Capa in hill, at left.

Painted cliff on far side of foreground hill at left - hence in cold country.

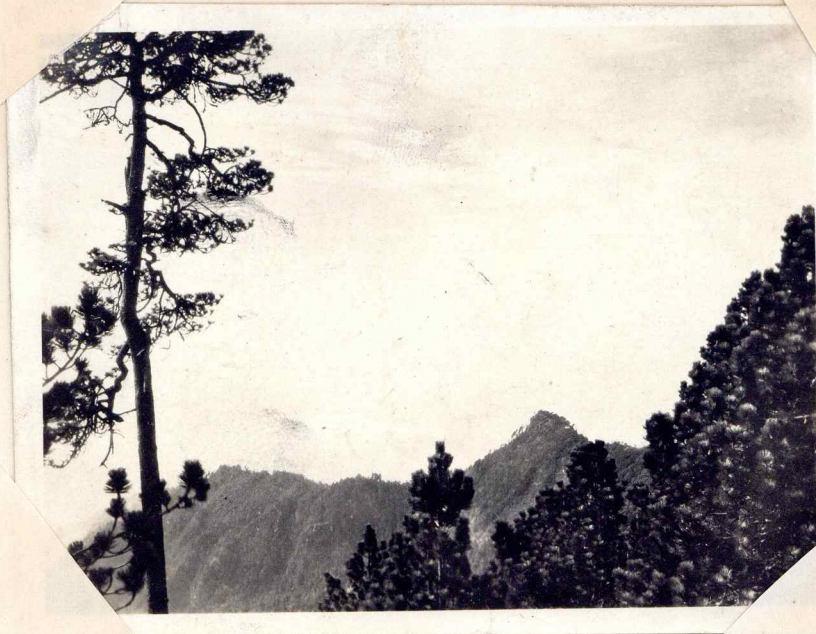


11/8/88 and 808/11

123

From path (apparently near Painted cliff).

country below the clouds in Pacific slope. (p11)



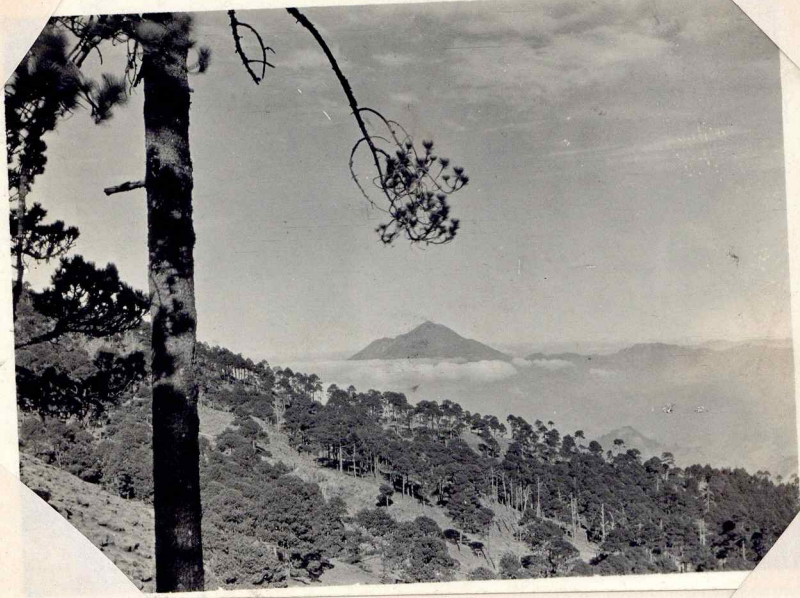
124

From Sibirniá Hill (hill of the
Pambol cliff), p. 12.



124 (dup).

See Card. # 808/1



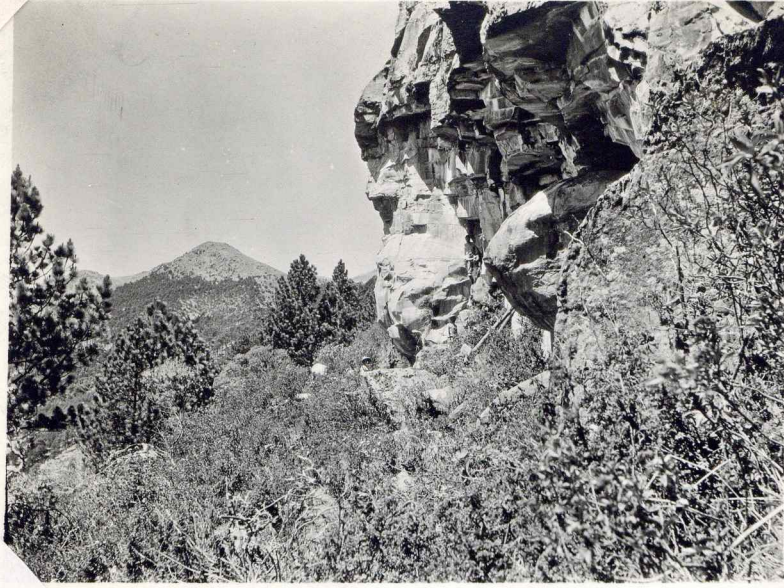
From Sibumal hill. (612)

125
~~808~~

(See Card
808/11

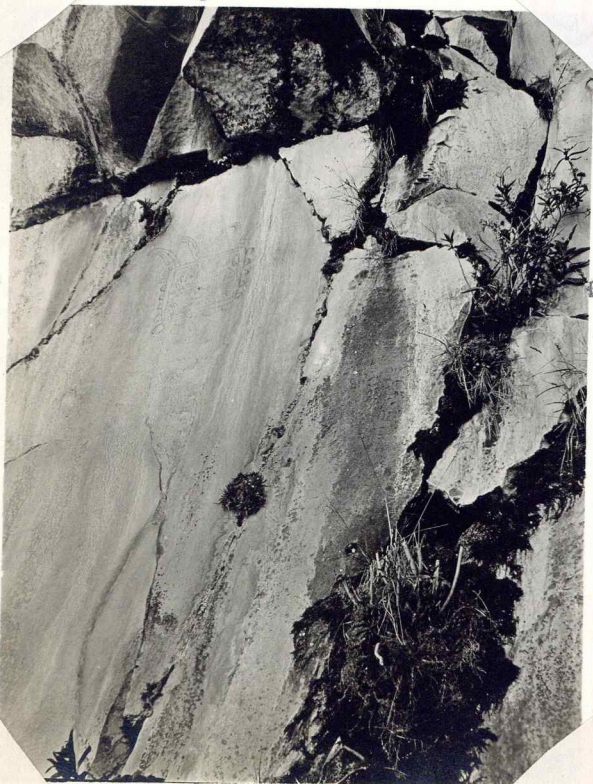


126 - See catalog 808/11



175835

126 -
See catalog
808/11



127 - See catalog , 811



128 - See catalog , 811



128 - See catalog, 811

Chibal region!

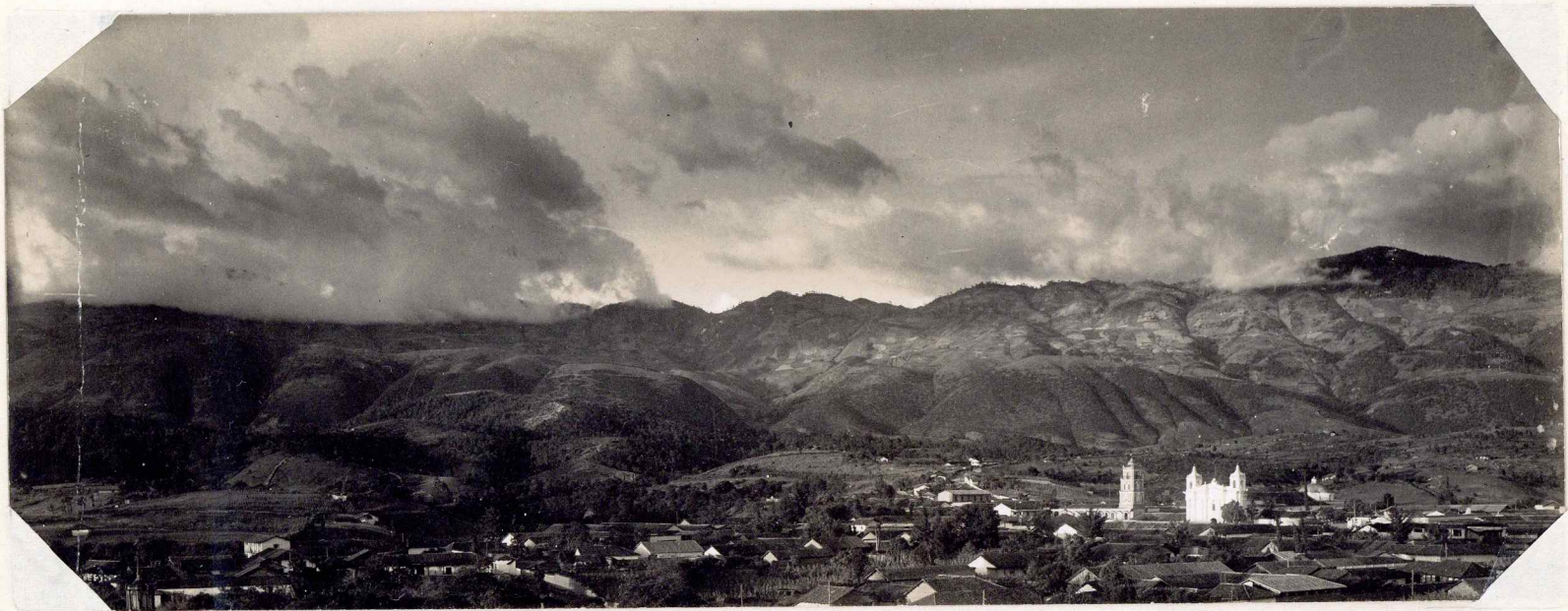
Bureau Photos 129-173

To be mounted:

129- Ser 812/1090 - p. 5-

177 w/p 3

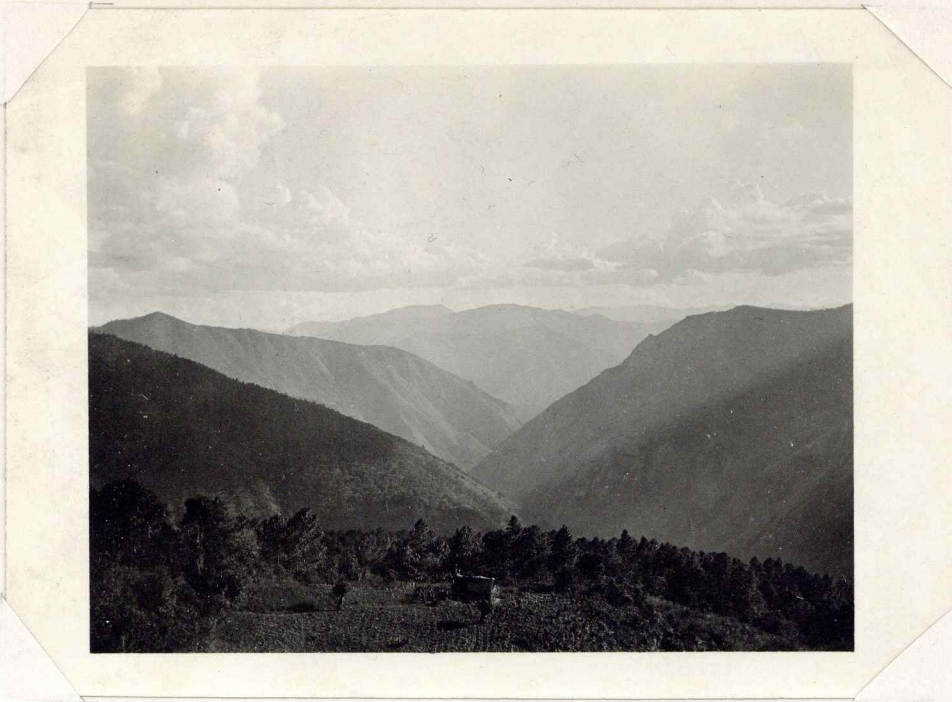
173- @ h102



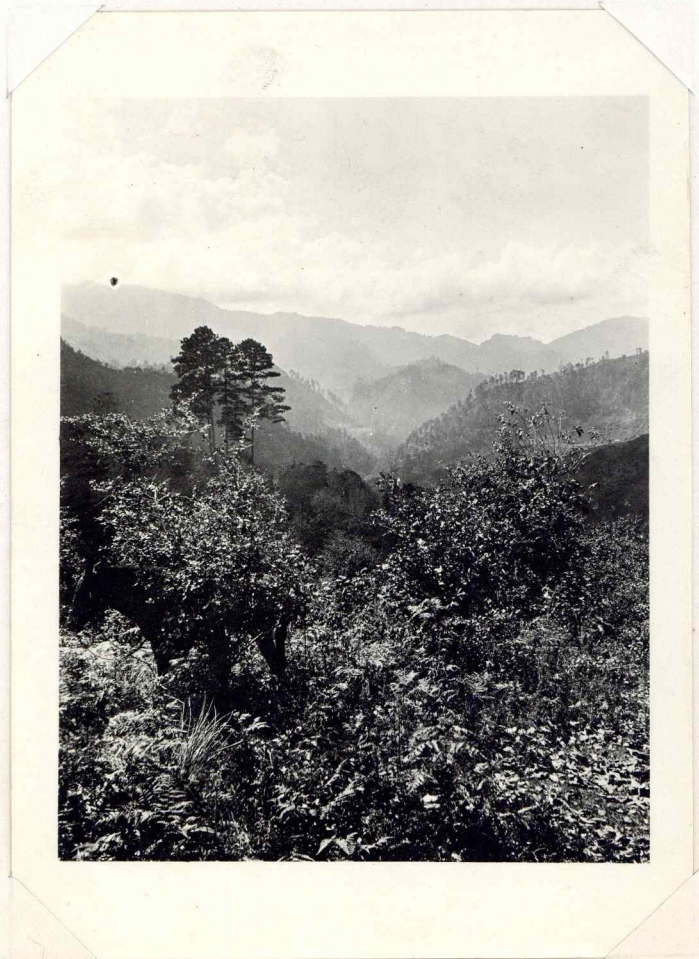
175836

129

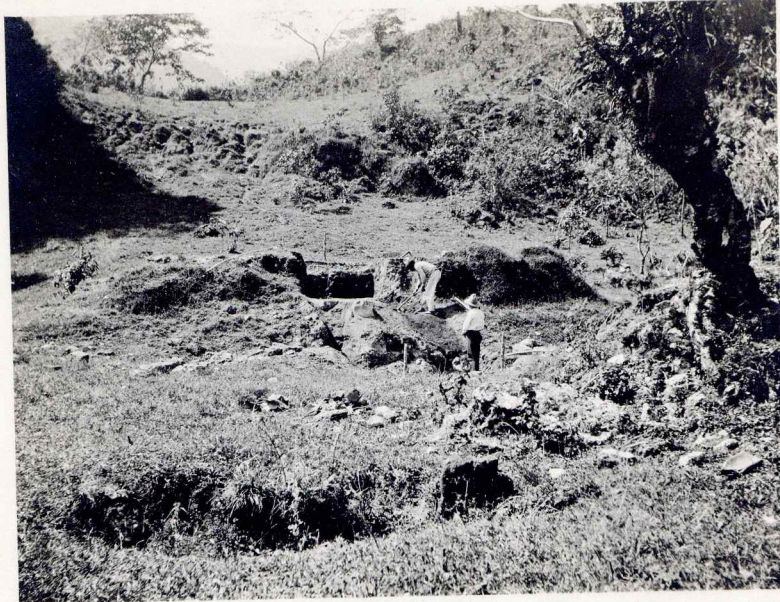
(for catalogue
812/1090)



130
(for catalogue
812/1090)

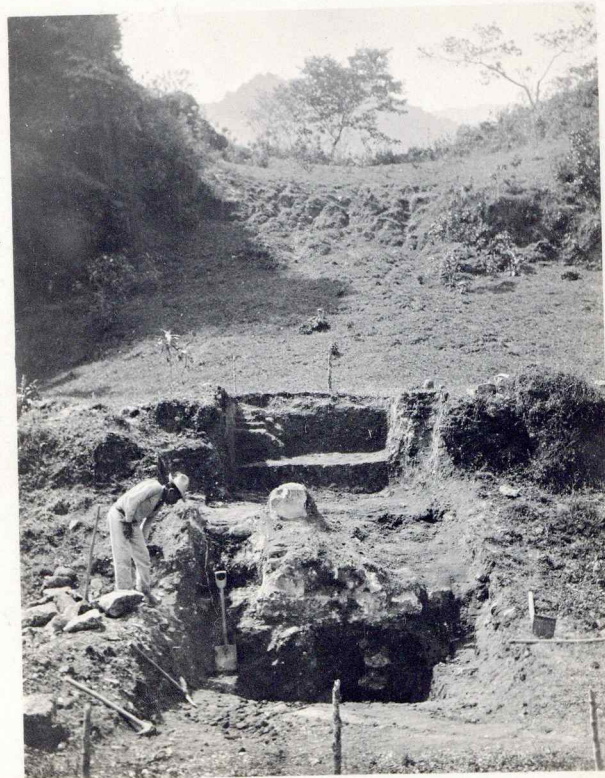


131
(for 812/1090)



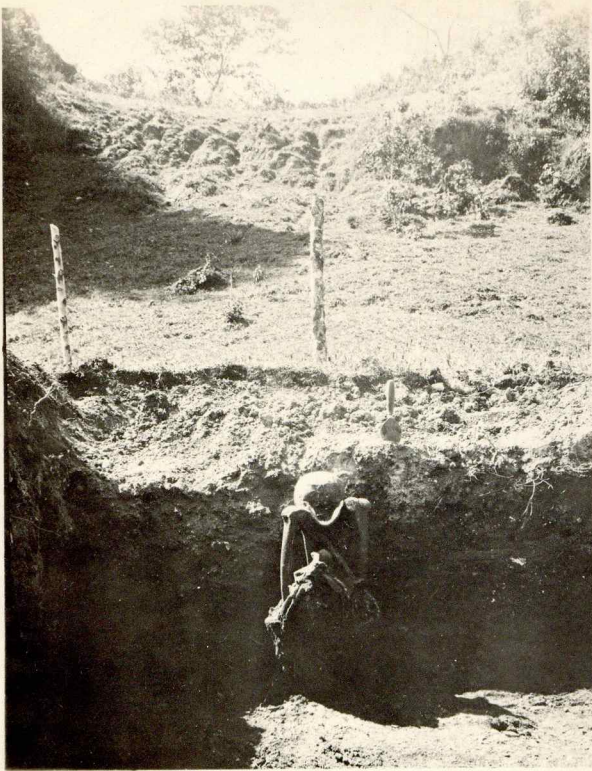
176741

132
(for 829/37)

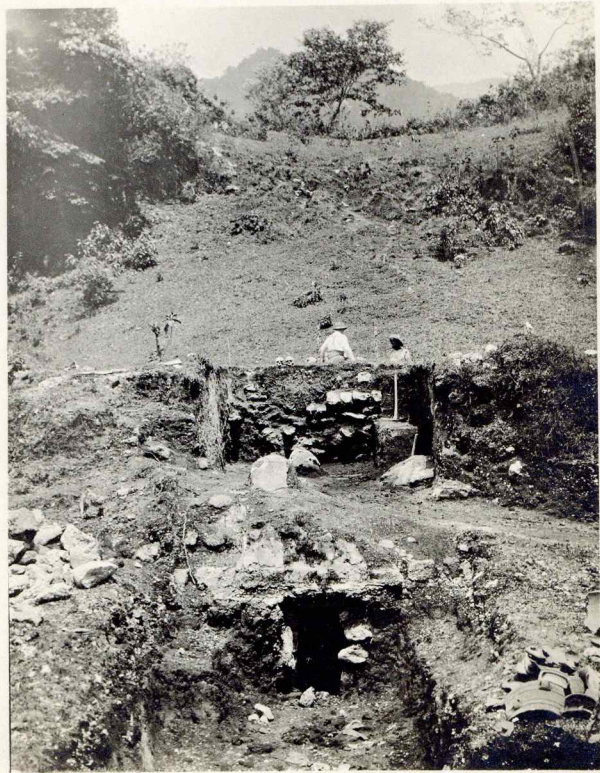


176737

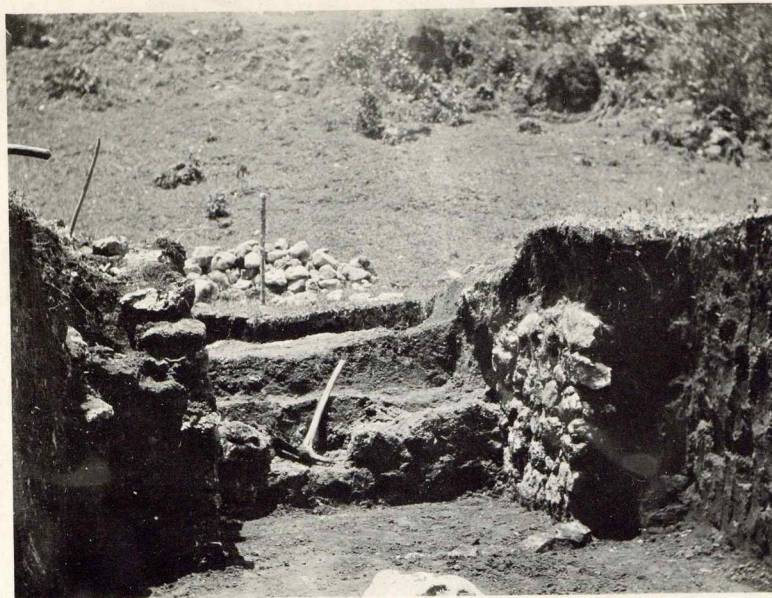
133
(for 829/37)



134
(for 829/37)

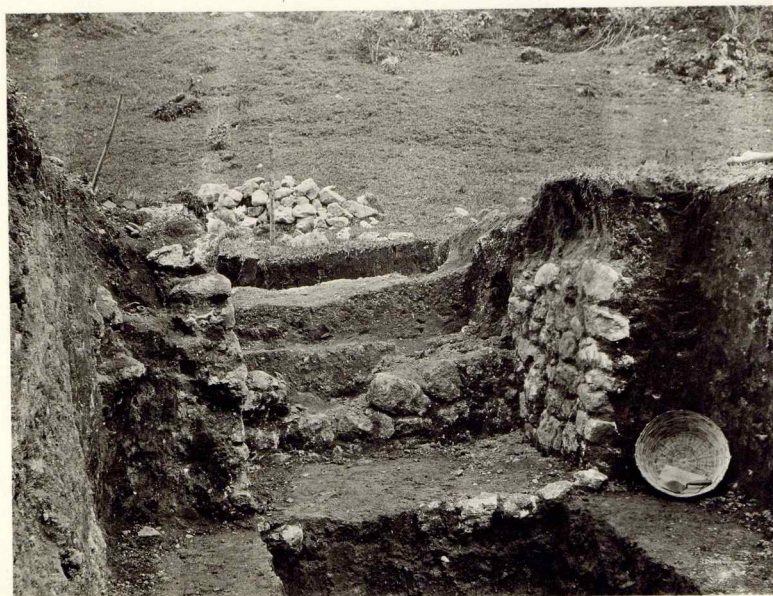


135
(for 829/37)



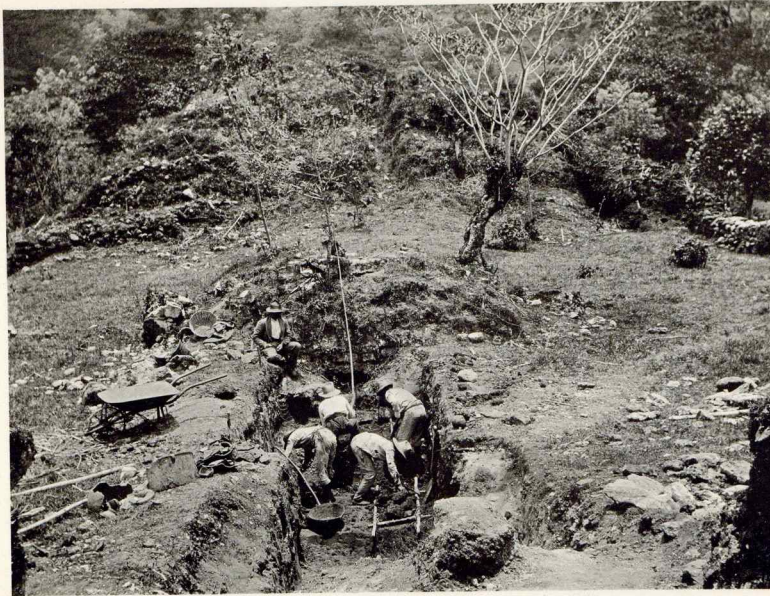
175837

136
(for 829/37)



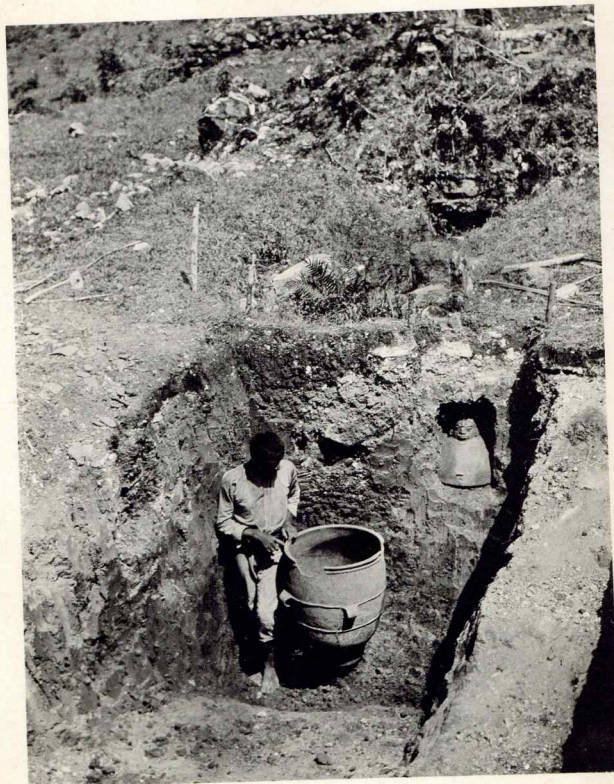
175838

137
(for 829/37)

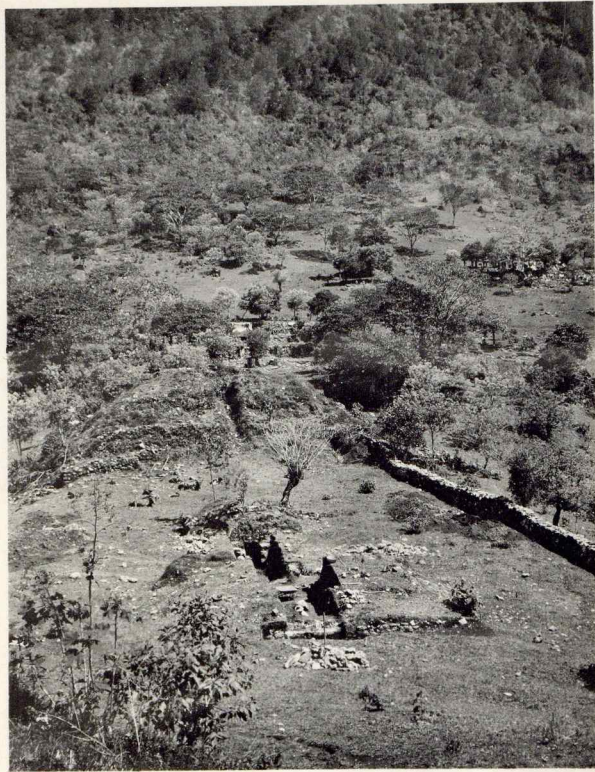


175839

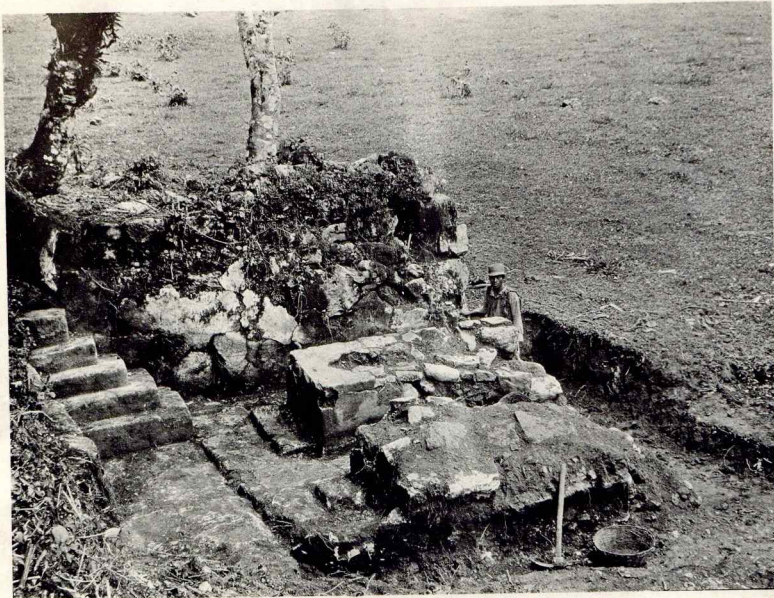
138
(for 838/65)



139
(for 856)

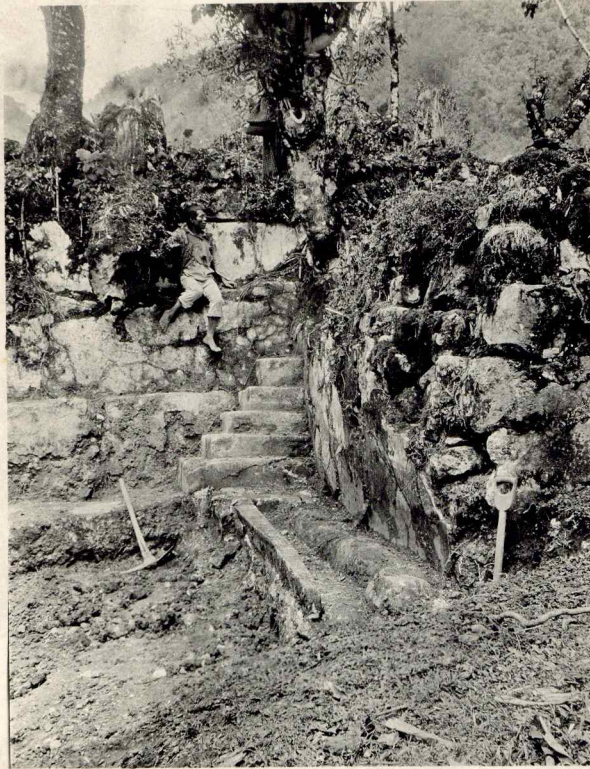


140
(for 867/73, 875/8)



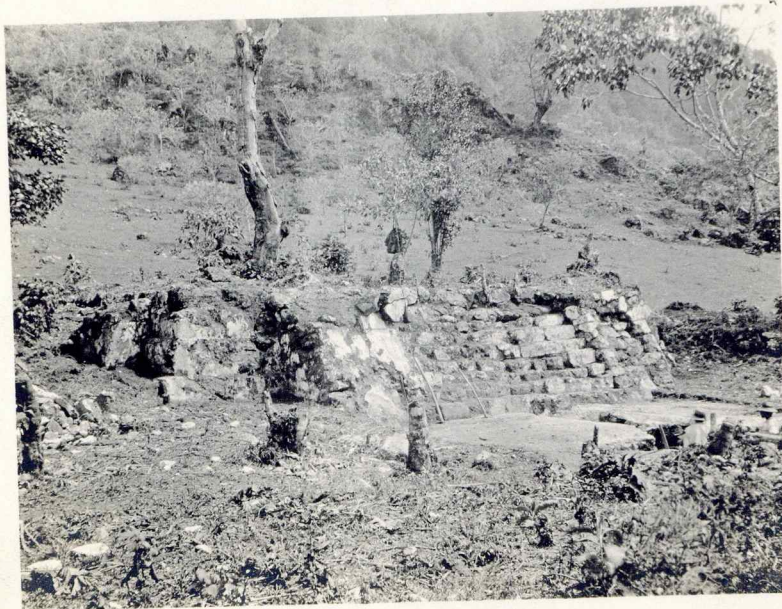
175840

141
(for 875/8)



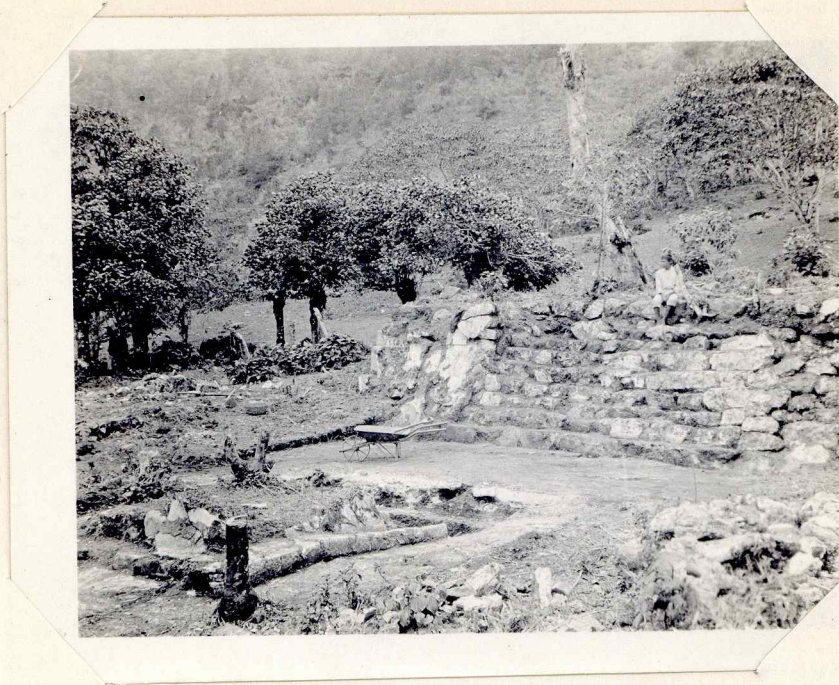
175841

142
(for 875/8)



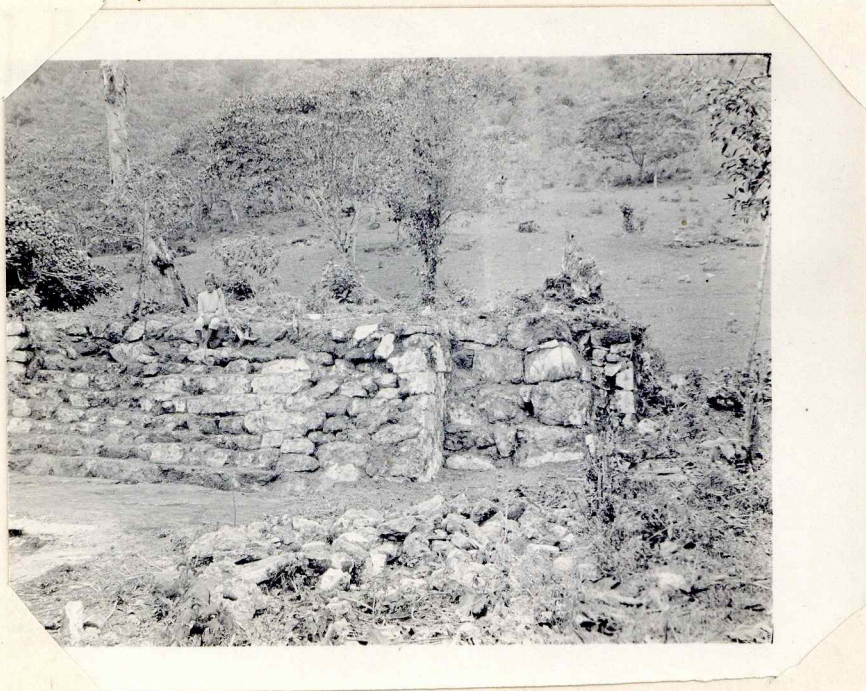
175842

143
(for 875/8)

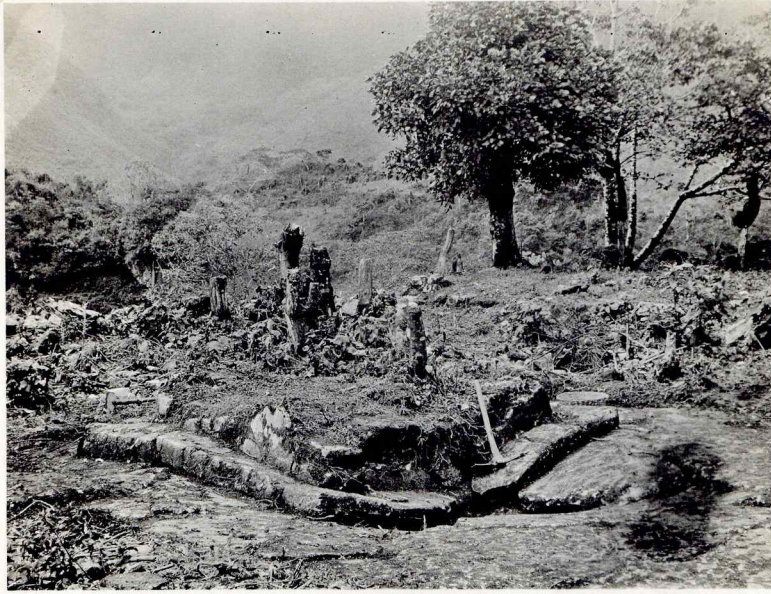


175843

144
(for 875/8)



145
(for 875/8)



146
(for 875/8)

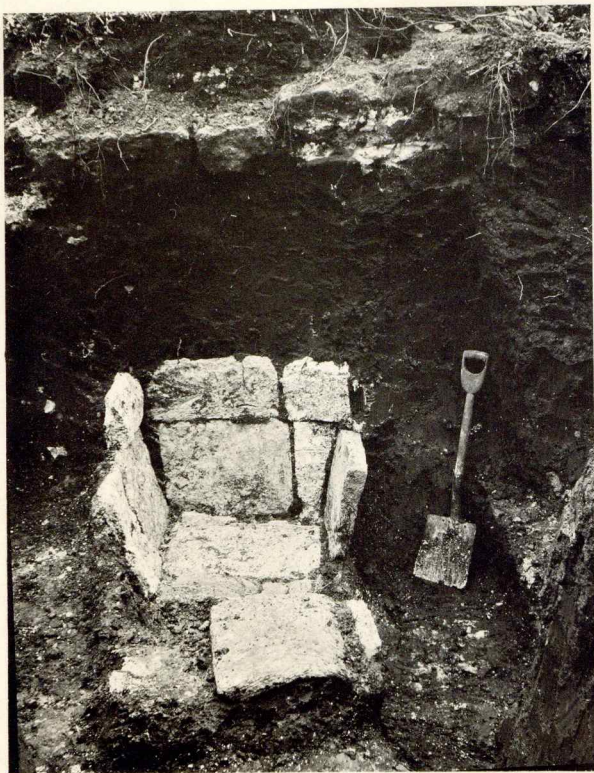


147
(for 875/8)



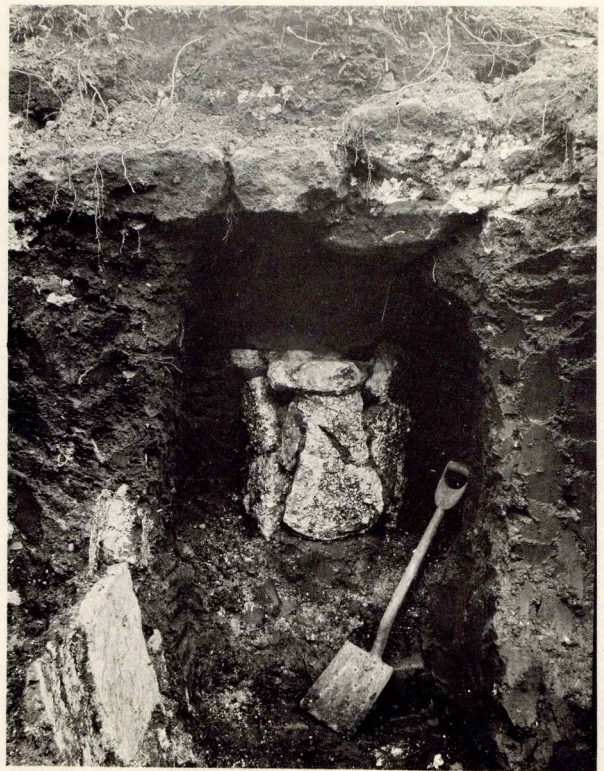
175844

148
(for 875/8)



175845

149
(for 875/8)



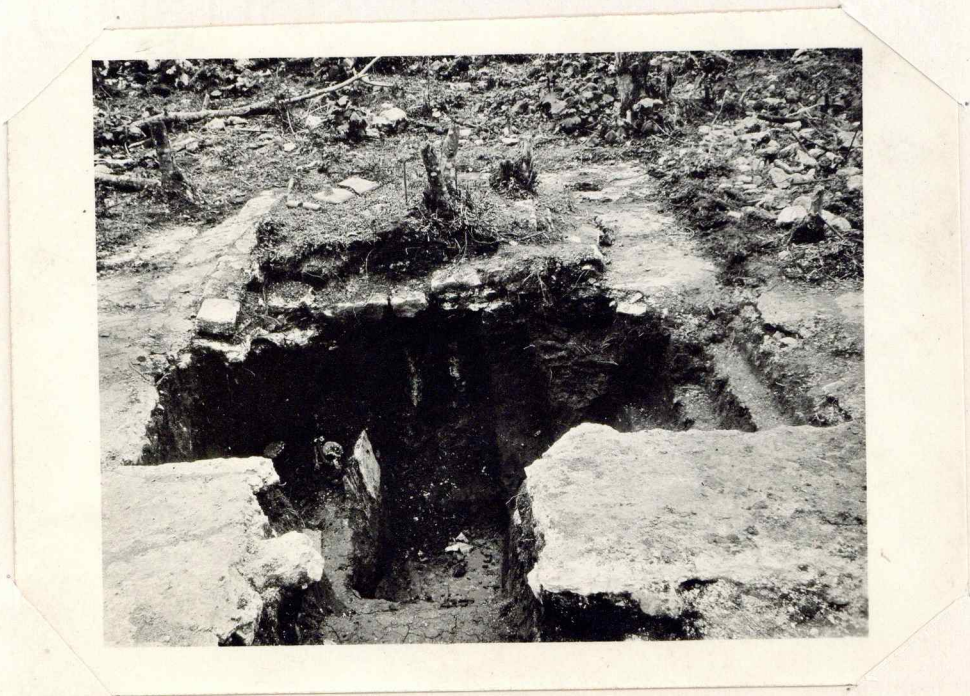
175846

150
(for 877/8)



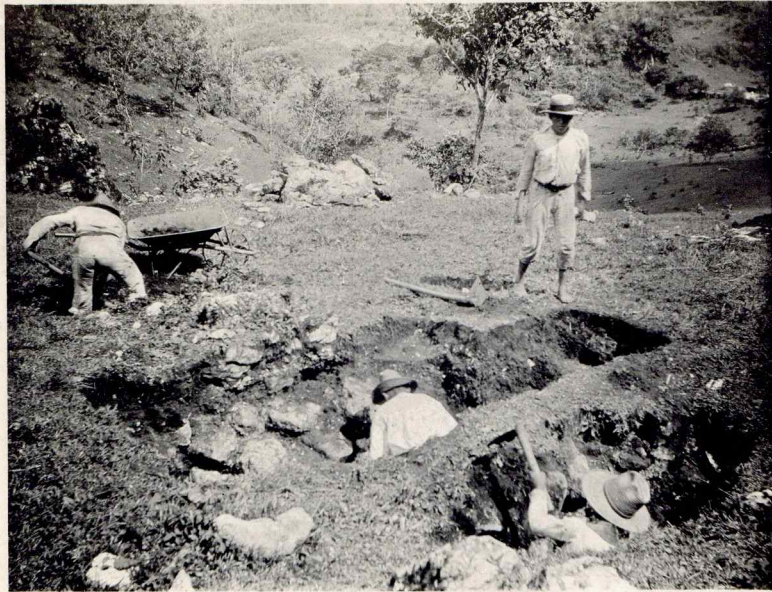
175847

151
(for 887/8)



175848

152
(for 887/8)



176738

153
(for 879/83)

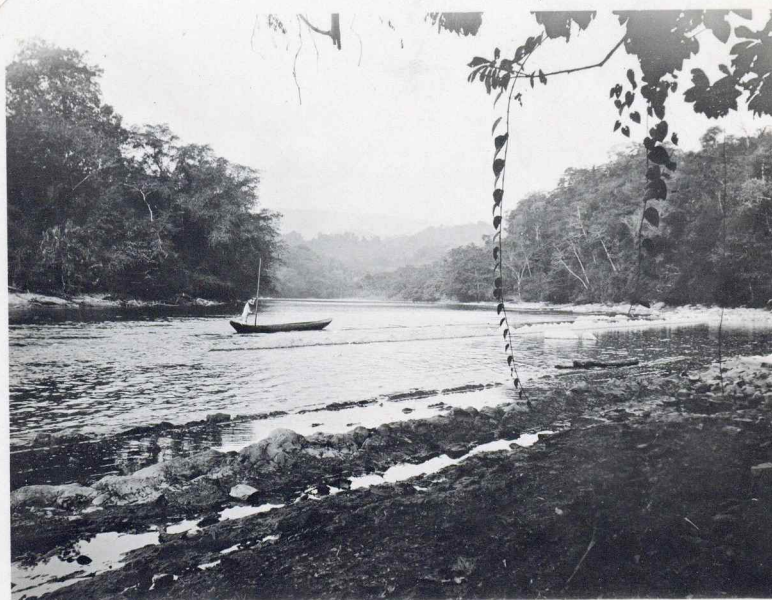
CHIPAL GROUPE, PLAZA FLOOR NEAR
BASE OF TERRACE



154
(for 884/910)



155
(for 921)



175849

156
(for 922/1090)