

Cuban Expedition 1901
Eastern Cuba - Views

Photos
by Stewart
Colin

1 of 4



CUBA, EL COBRE

THE OLD CHURCH

7414
8

CUBA, CAÑAS GUASIMAS

OLD GRAVEYARD

(Near PUTA MAISI)

7412
1

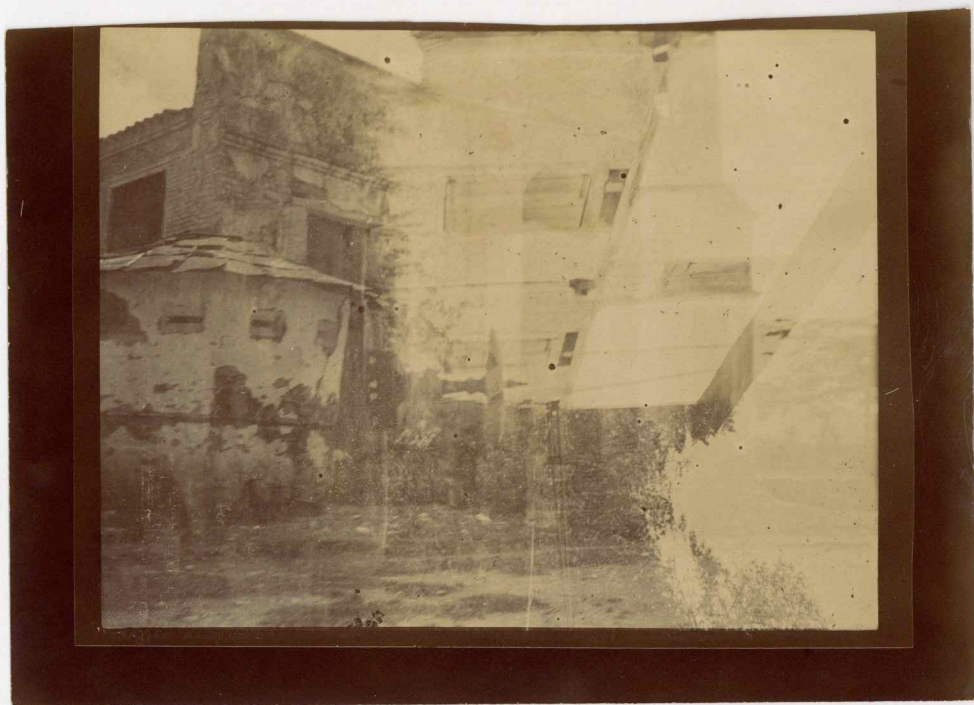


CUBA, CAPE MASIN (CABOMAISI)
THE LIGHTHOUSE

7414
9

CUBA, CAPE MASIN (CABO MAISI)
THE LIGHTHOUSE

7414
9



CUBA, CAÑAS GUASIMAS

OLD GRAVEYARD

(NEAR PUNTA MAISI)

7488 1-2
1

CUBA, BELLEVUE

THE HOUSE

[THE COFFEE PLANTATION AT YATERAS,

THE HOUSE AT BELLA VISTA]

[OWNED BY MR. BEGUÉ]

1
2-2 88 x 2



CUBA, BOMA

DISTANT VIEW OF CLIFFS

02
7176

CUBA, BOMA

DISTANT VIEW OF CLIFFS

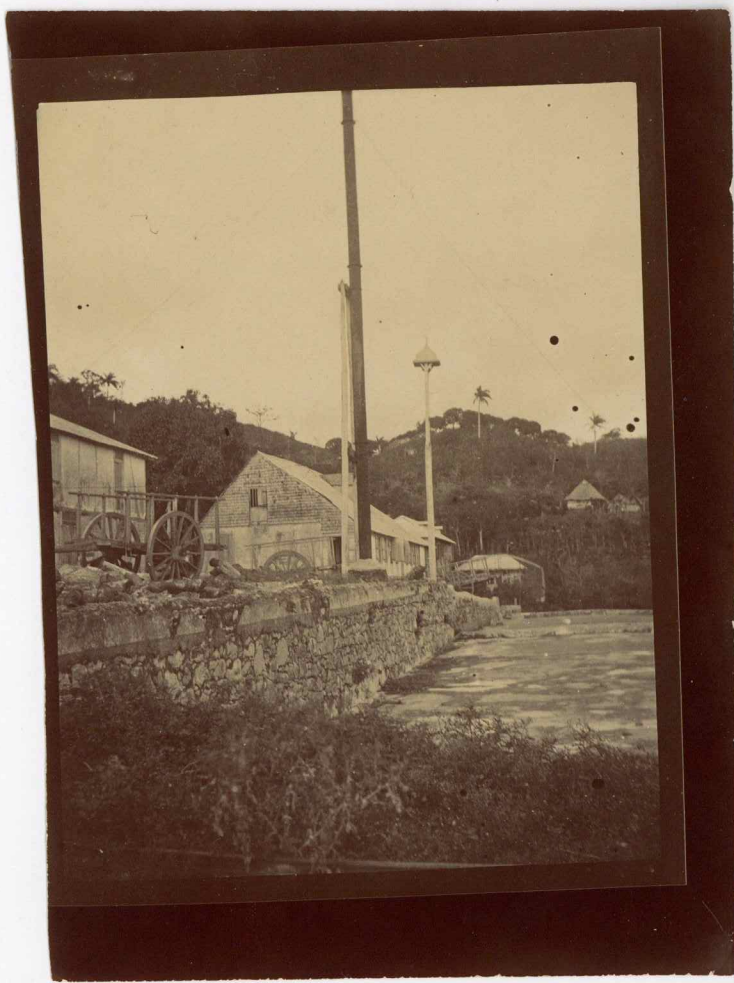
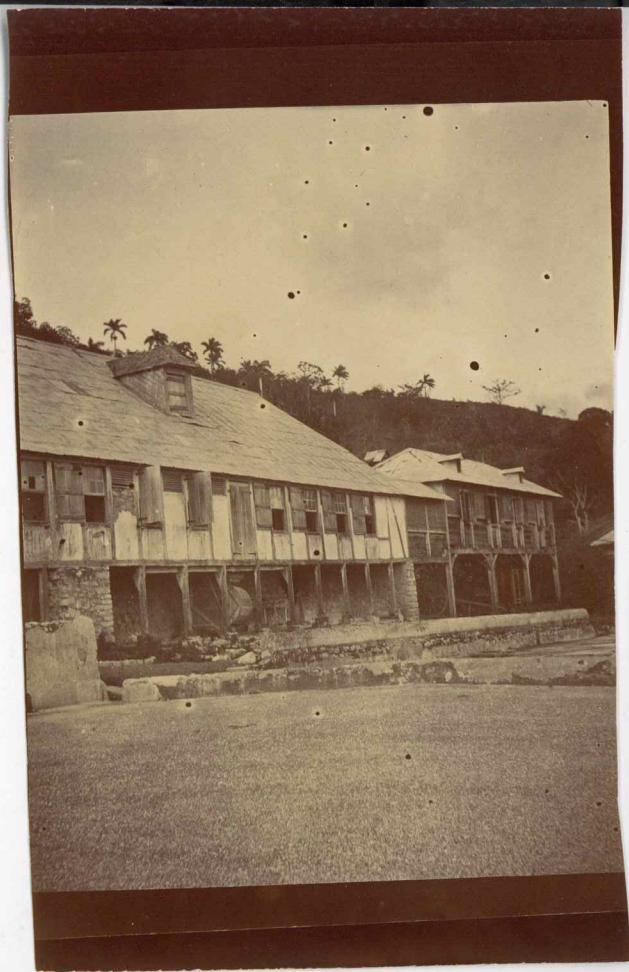
7414
10

CUBA, BELLEVUE

THE HOUSE

[THE COFFEE PLANTATION
AT YATERAS, THE HOUSE AT
BELLA VISTA OWNED BY
MR. BEGUÉ]

1
7414



CUBA, BELLVUE

THE HOUSE

[THE COFFEE PLANTATION AT
YATERAS, THE HOUSE AT
BELLA VISTA OWNED BY
MR. BEGUÉ]

7 4 14

CUBA, BELLVUE

THE HOUSE

[THE COFFEE PLANTATION
AT YATERAS, THE HOUSE AT
BELLA VISTA OWNED
BY MR.
BEGUÉ]

7 4 14

CUBA, BELLVUE

THE HOUSE

[THE COFFEE PLANTATION AT
YATERAS, THE HOUSE AT
BELLA VISTA, OWNED BY
MR. BEGUÉ]

7 4 14

CUBA, BELLVUE

THE HOUSE

[THE COFFEE PLANTATION AT
YATERAS, THE HOUSE AT
BELLA VISTA OWNED BY
MR. BEGUÉ]

7 4 14



CUBA, BELLVUE
THE HOUSE

7414
14

[THE COFFEE PLANTATION
AT YATERAS, THE

HOUSE AT BELLA
VISTA, OWNED BY
MR. BEGUÉ]

CUBA, BELLEVUE
THE HOUSE

[THE COFFEE PLANTATION
AT YATERAS, THE HOUSE AT
BELLA VISTA OWNED BY
MR. BEGUÉ]

7414
14

CUBA, ELCANEX
RUINS, CHURCH

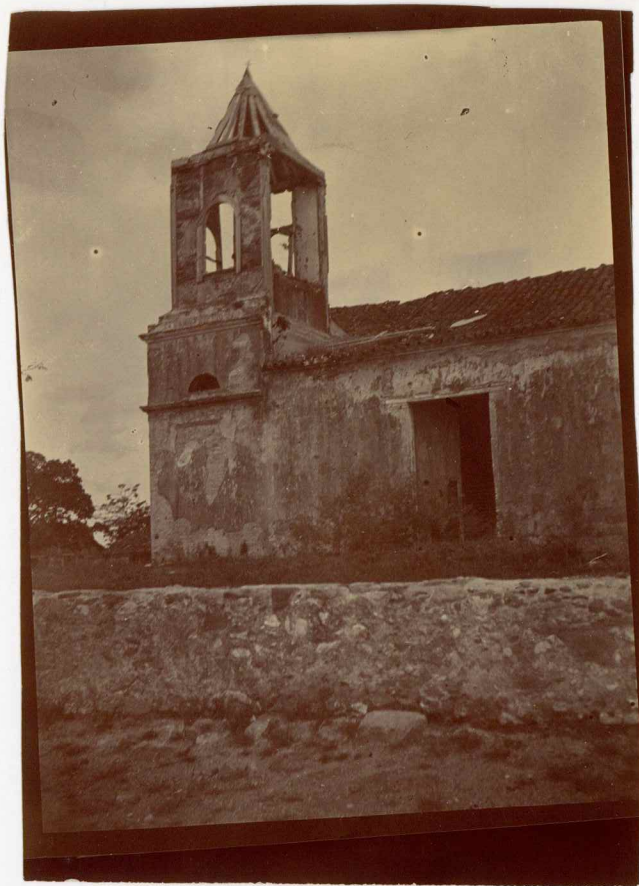
62
7416

CUBA, BELLVUE
THE HOUSE

[THE COFFEE PLANTATION
AT YATERAS, THE HOUSE

7414
14

AT BELLA VISTA, OWNED
BY MR. BEGUÉ]



CUBA, ELCANEY
RUINS, CHURCH

7414
29

CUBA, BELLVUE
THE HOUSE
[THE COFFEE PLANTATION
AT YATERAS, THE HOUSE
AT BELLA VISTA, OWNED
BY MR. BEGUÉ]

7414
29

CUBA, ELCANEY
RUINS, CHURCH

7414
29



CUBA, ELCANEY
RUINS, CHURCH

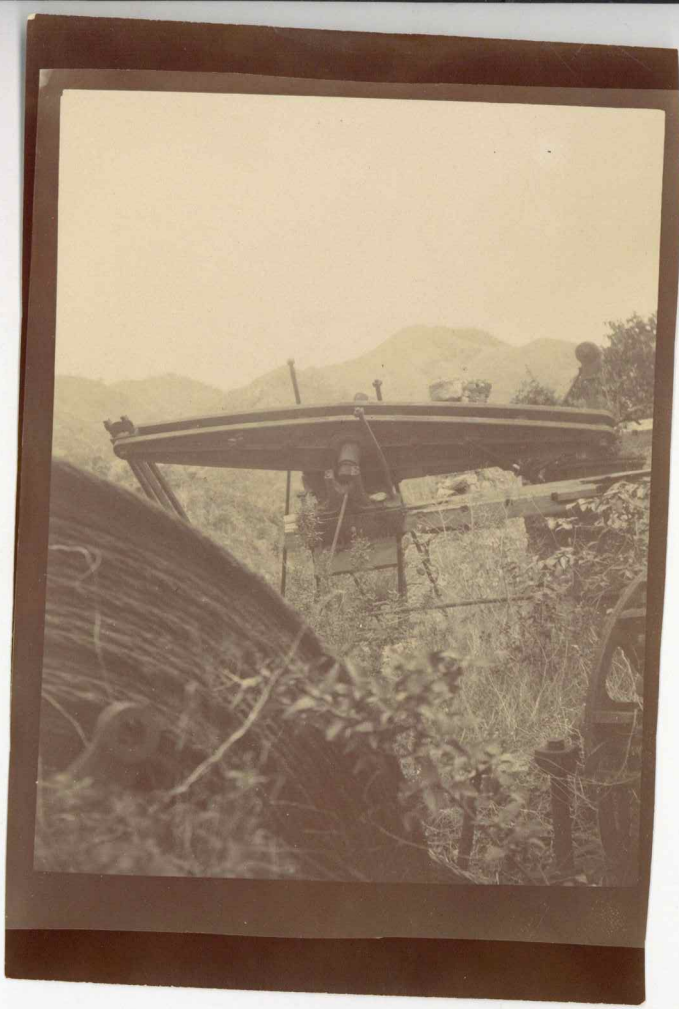
7414
29

CUBA, SANTIAGO (EL COBRE)
TABLET TO COMMEMORATE
THE VIRGINIUS MASSACRE

7414
6

CUBA, SANTIAGO (EL COBRE)
TABLET TO COMMEMORATE
THE VIRGINIUS MASSACRE

7414
6



CUBA, EL COBRE

THE OLD MINE

7414
1

CUBA, EL COBRE

THE NEW CHURCH

7414
8

CUBA, EL COBRE

THE OLD MINE

7414
1

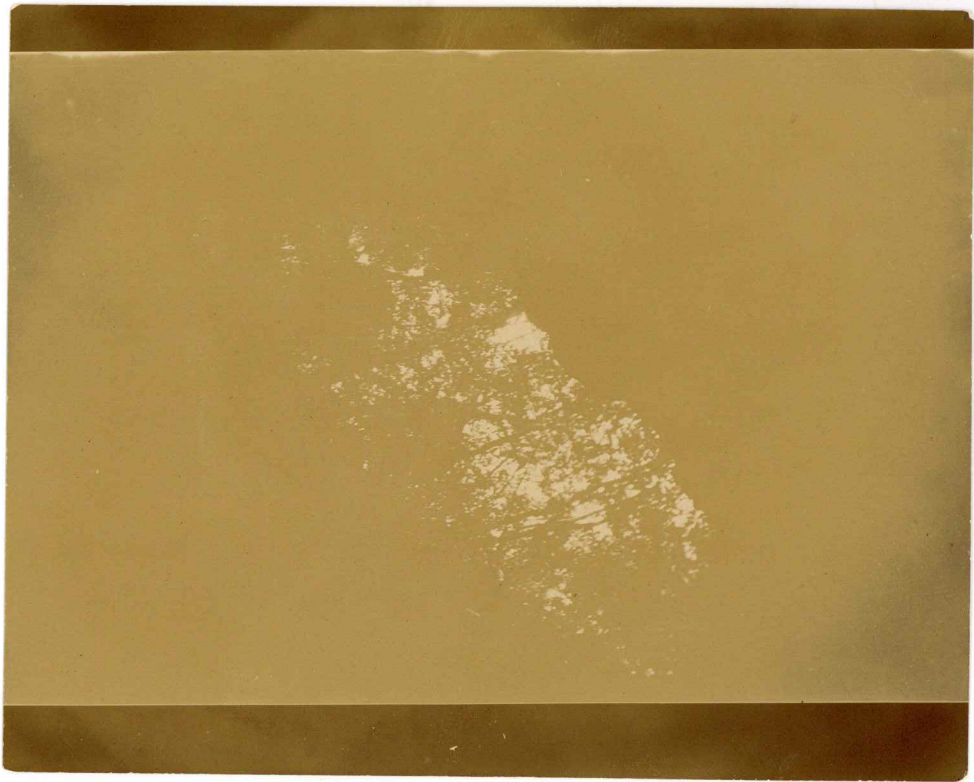
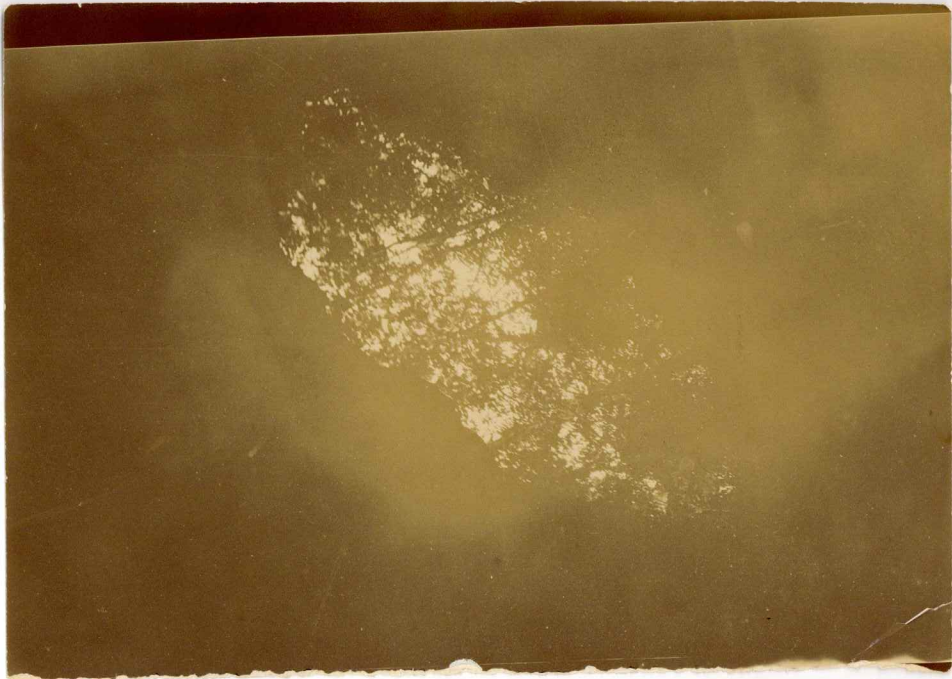


CUBA, EL COBRE
THE NEW CHURCH

740f
8

CUBA, EL COBRE
THE OLD CHURCH

7414
8



CUBA, MT LIBANO
CRACK IN CAVE ROOF

7488

CUBA, MT LIBANO
CRACK IN CAVE ROOF

7488



CUBA, Pueblo, Viejo
NEAR CAPE MAISI'

7414
2

CUBA, Pueblo, Viejo,
NEAR CAPE
MAISI'

7414
2



CUBA, Pueblo Viejo, NEAR
CAPEMAISI

7414
2

CUBA, MT. LIBANO

THE FOREST FROM THE MOUTH
OF THE CAVE AT MONTE LIBANO

7414
16



CUBA, MT. LIBANO

THE CAVE -- SOURCE OF
GUASO RIVER

7464
16

240500

CUBA, MT. LIBANO

THE FOREST FROM THE
MOUTH OF THE CAVE AT
MONTE LIBANO

9)
h' h6



CUBA, MTLÍBANO

THE FOREST FROM THE MOUTH
OF THE CAVE AT MONTE
LÍBANO.

1447
16

CUBA, MTLÍBANO

IN THE CAVE

1447
16



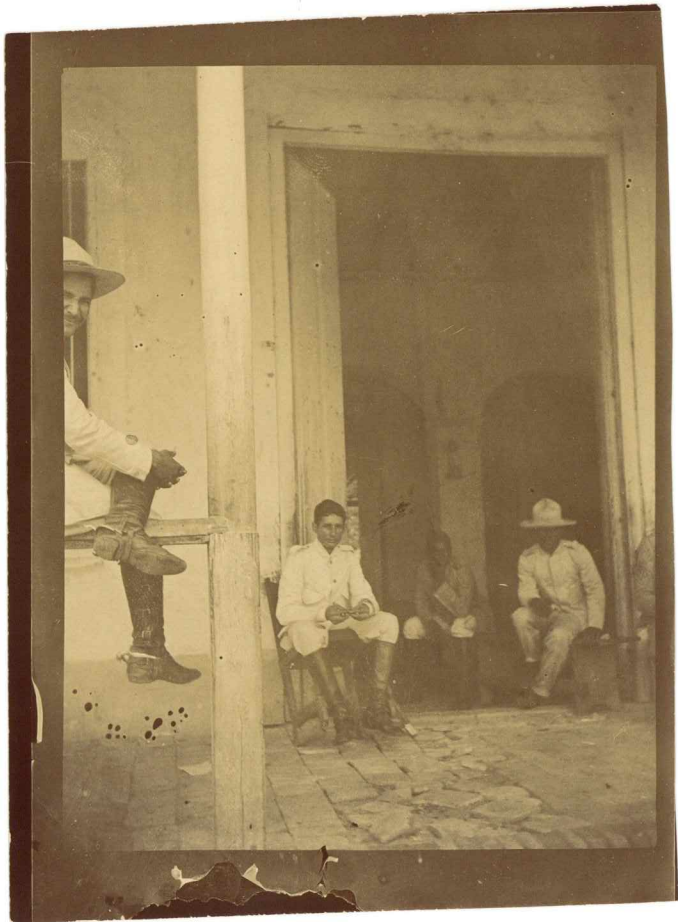
CUBA, MT. LIBANO

THE CAVE

7488

CUBA, Pueblo Viejo

7414
2



CUBA, MT LIBANO

IN THE CAVE

746f
6

CUBA, EL CANEY

("A GROUP OF RURAL GUARDS
WAS LOUNGING IN FRONT
OF THE POLICE STATION...").
(FROM ARTICLE IN BULLETIN
VOL. III, NO. 4 ON PAGE 191).

746f
f

CUBA, EL CANEY

("A GROUP OF RURAL
GUARDS WAS LOUNGING IN
FRONT OF THE POLICE STATION
..."). (FROM ARTICLE IN
ON PAGE 191. BULLETIN
VOL. III NO. 4)

f
746f