

O.K.

ARCH. TOM.

No. 2483 32319

Name (53)

Remarks (TOM)

OFFERING NICHE OF KHUFU-MER-NETERU. INSCRIPTION NO. 31, STELA, LOG LINTEL AND OFFERING BASIN IN SITU. OLD KINGDOM.

SEE FISHER: GIZEH, THE MINOR CEMETERY, 1, PL. 21.

*W. D. Ryan*



No. 2484 32320

Name (32)

Remarks (MUM BUR)

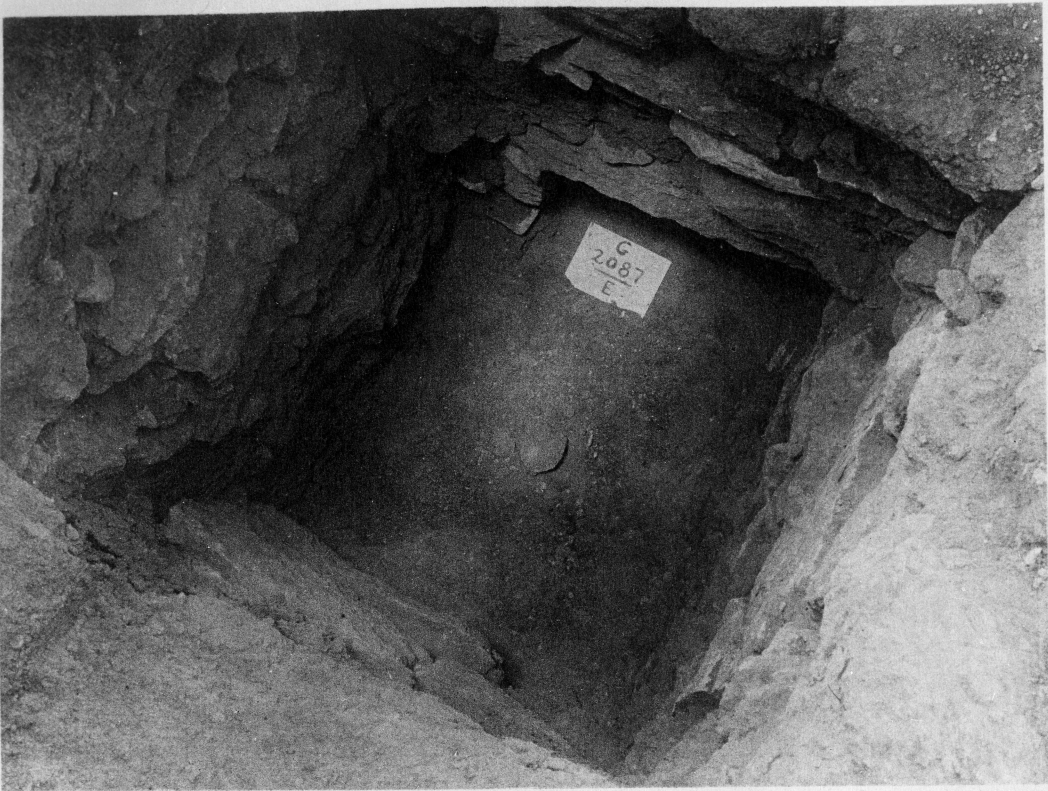
- 1 - G2087. SHAFT E BUILT WHOLLY IN THE RUBBLE CORE OF THE MASTABA.
- 2 - G2087. BURIAL E.
- 3 - G3000. SHAFT C. WITH RUBBLE LINING ABOVE ROCK.
- 4 - CHAMBER C. BONES BENEATH FRAGMENTS OF WOODEN COFFIN.

OLD KINGDOM.

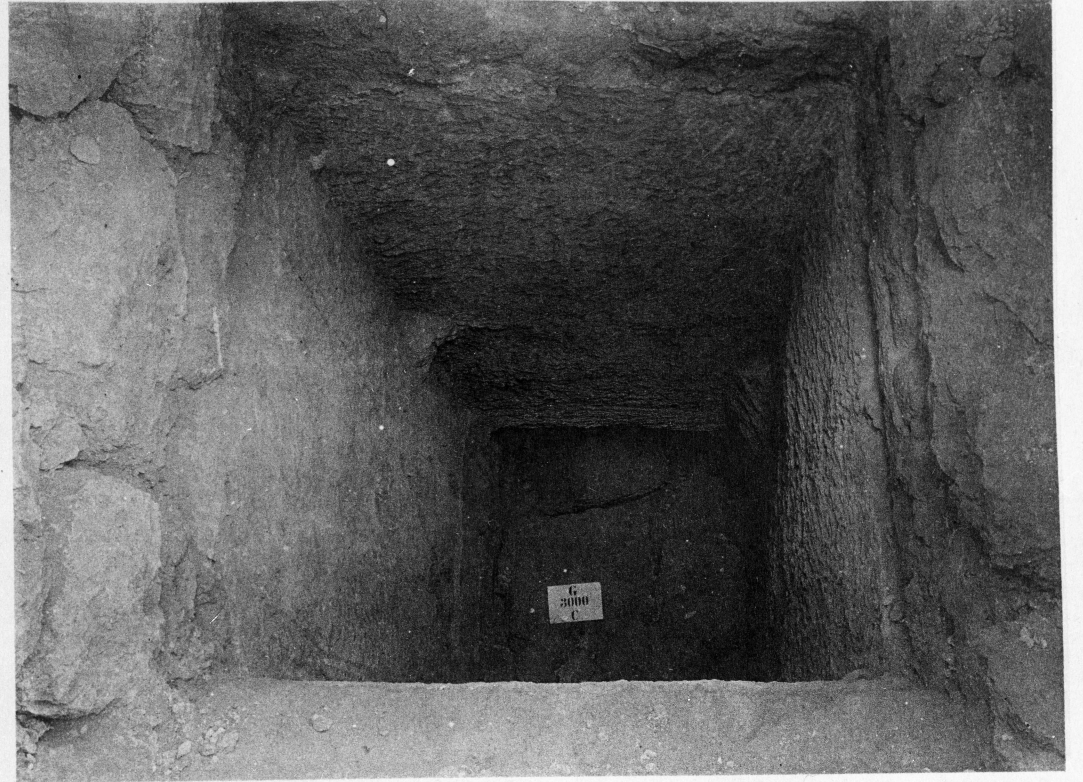
SEE FISHER: GIZA THE MINOR CEMETERY, PL. 31.

*10 m  
Rygn.*

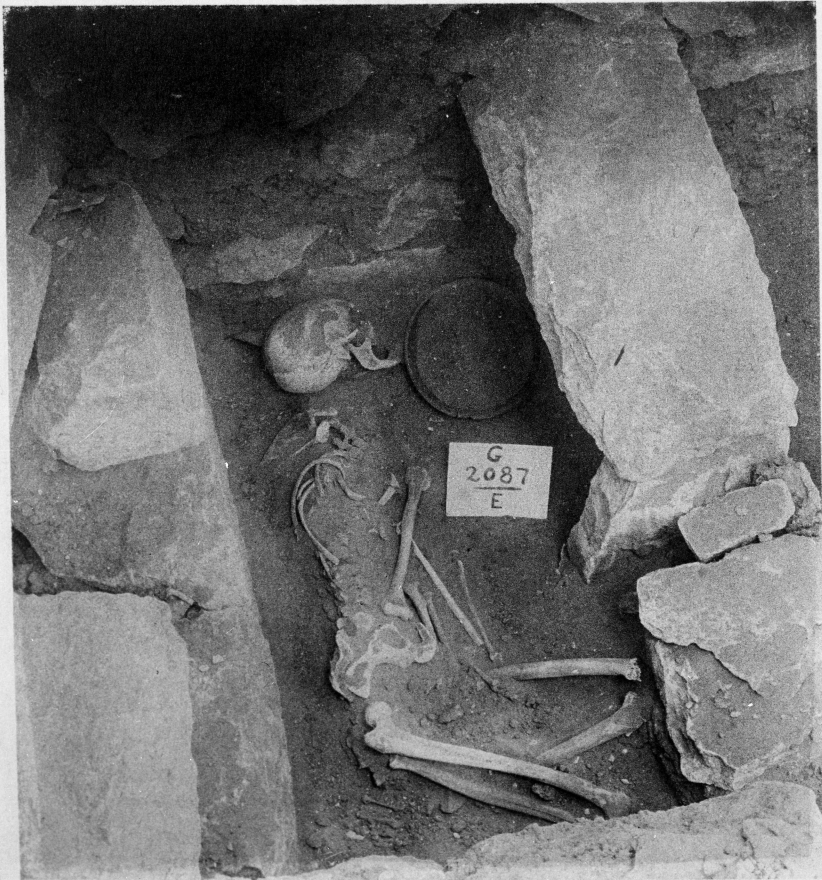
1



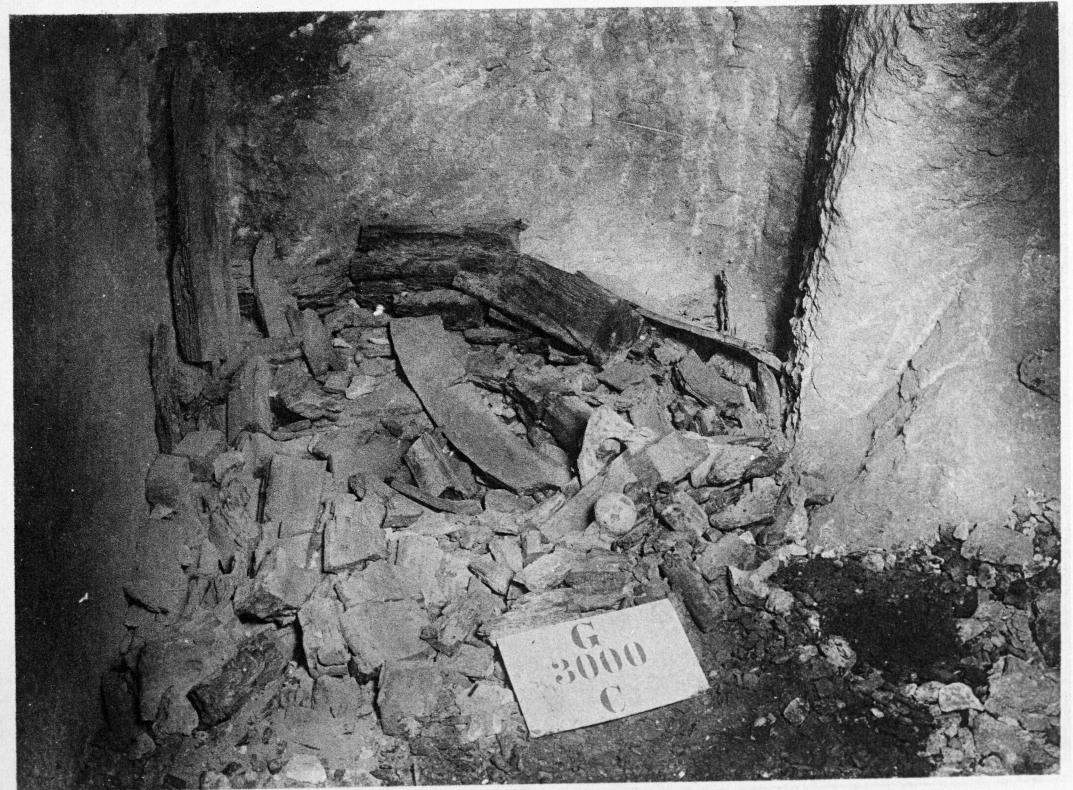
3



2



4



No. 2485 32321

Name (33)

Remarks (MIMBUR)

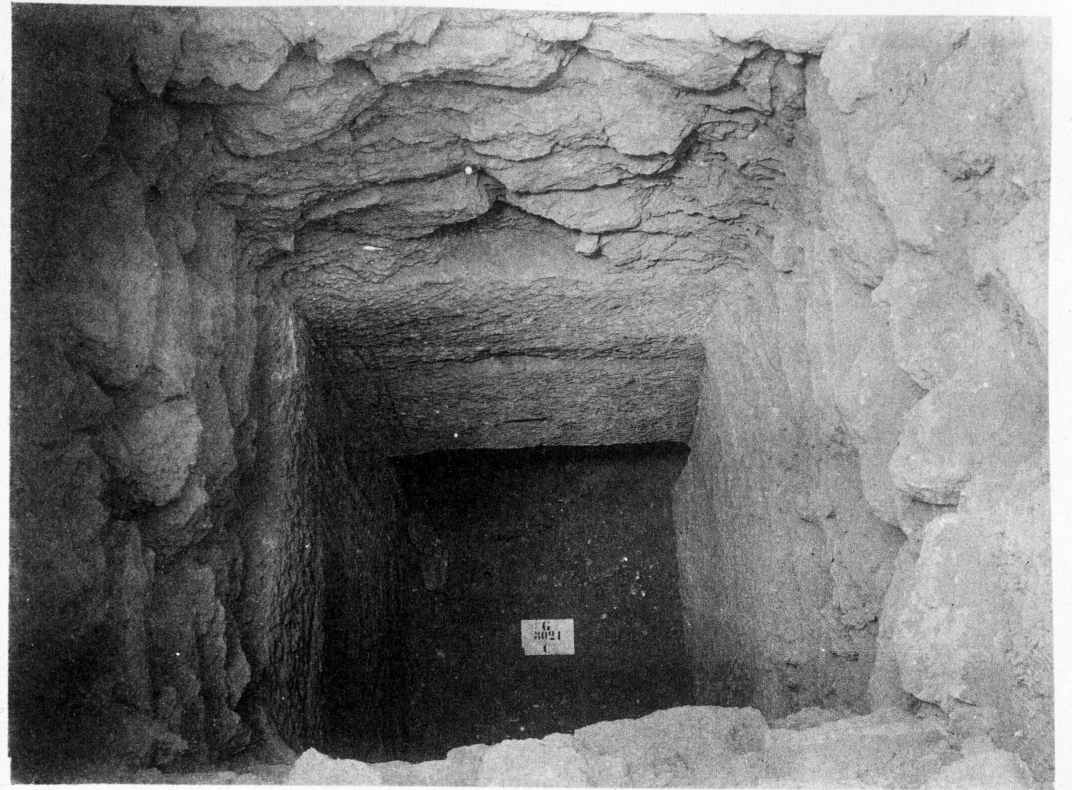
- 1 - G3020 BURIAL IN X. ONE SIDE OF A WOODEN COFFIN REMOVED. LOOKING WEST.
- 2 - G3031 PIT IN FLOOR OF CHAMBER B WITH ITS COVERING SLABS. LOOKING SOUTH.
- 3 - G3021 SHAFT C. LINED WITH RUBBLE. LOOKING DOWN, WEST.
- 4 - G3021 C. BURIAL IN CHAMBER C. LOOKING WEST.

OLD KINGDOM. 4th or 5th DYNASTY.

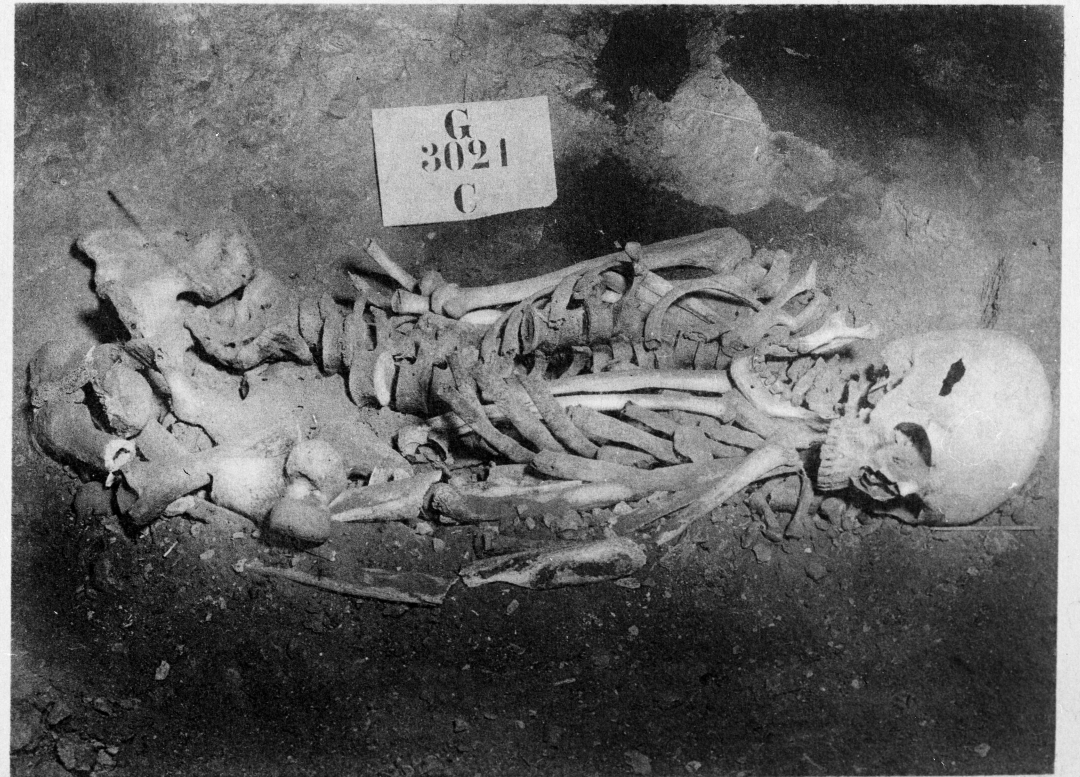
SEE FISHER: GIZA THE MINOR CEMETERY, PL. 38.



2



4



O. K.

ARCH. TOM.

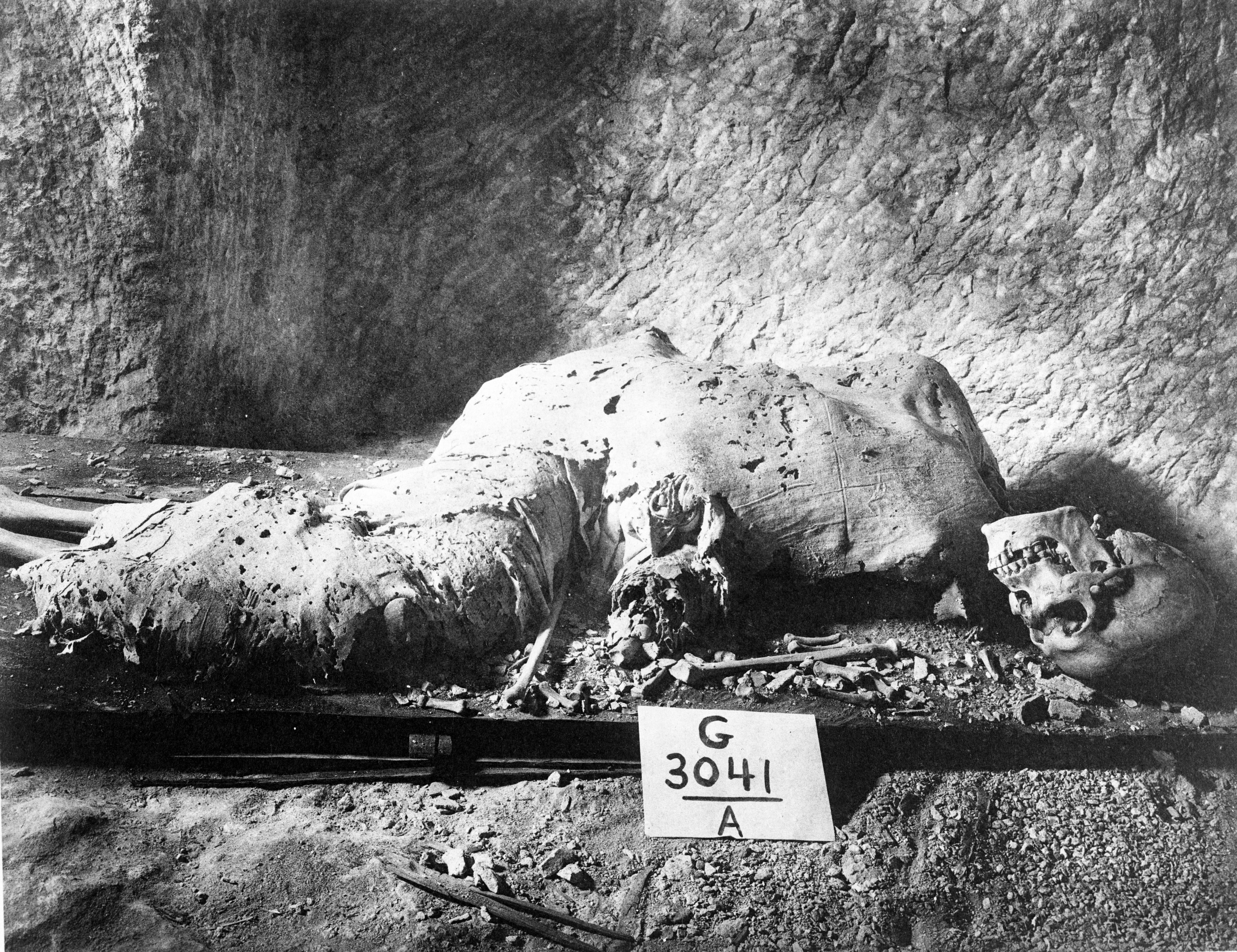
No. 2486 32322

Name (34)

Remarks (MUM BUR)

OLD KINGDOM BURIAL. 4th OR 5th DYNASTY. LID AND SIDES OF COFFIN REMOVED.

SEE FISHER: GIZA THE MINOR CEMETERY, PL. 41, P. 1.



G  
3041  
A