

38256

NEG. A 458

(JUNE 4, 1916)

GIZA, THE MINOR CEMETERY.

Shaft B of Grave 3031.

4th or 5th dynasty.

See Fisher, Giza, The Minor Cemetery, pp. 112-113.



C
3031
B

38257

NEG. A 459
(JUNE 4, 1916)

GIZA, THE MINOR CEMETERY.

Skeleton B of Grave 3042.

4th or 5th dynasty.

See Fisher, Giza, The Minor Cemetery, p. 132 & Fig. 127.

Cf. Neg. A 477 for Shaft B.
For Shaft A. Cf. Negs. A 446.
For Chamber A.: Cf. Neg. A 482.



G
3042
B

38258

NEG. A 462
(JUNE 5, 1916)

GIZA, THE MINOR CEMETERY.

Shaft A of Grave 3013.

4th or 5th dynasty.

See Fisher, Giza, The Minor
Cemetery, p. 93 & Fig. 80.

Cf. Neg. A 479 for Chamber A.

G
3013
A

38259

NEG. A 469
(JUNE 6, 1916)

GIZA, THE MINOR CEMETERY.

Skeleton in Chamber C of
Grave 2085.

Probably 4th dynasty.

See Fisher, Giza, The Minor
Cemetery, pp. 31 - 34 & Fig.
23.

G
2085
C



38260

NEG. A 472

(JUNE 6, 1916)

GIZA, THE MINOR CEMETERY.

Skeleton in Chamber C of Grave
3012.

4th or 5th dynasty.

See Fisher, Giza, The Minor
Cemetery, p. 91-2; cf. fig.
78 for shaft & chamber C.

Cf. Neg. A 457 for Shaft C.



G
3012
C

38261

NEG. A 479
(JUNE 7, 1916)

GIZA, THE MINOR CEMETERY.

Door to Chamber A of Grave
3013 showing recess for door
slab.

4th or 5th dynasty.

See Fisher, Giza, The Minor
Cemetery, p. 93 & fig. 80.

For Shaft A: Cf. Neg. A 462.



G
3013
A

38262

NEG. A 481

(JUNE 7, 1916)

GIZA, THE MINOR CEMETERY.

Part of Chamber B in Grave
3030.

4th dynasty.

See Fisher, Giza, The Minor
Cemetery, pp. 110-111, fig.
102.



2000

38263

NEG. A 482
(JUNE 7, 1916)

GIZA, THE MINOR CEMETERY.


Chamber A of Grave 3042.

4th or 5th dynasty.

See Fisher, Giza, The Minor
Cemetery, p. 132.

For Shaft A: Cf. Neg. A 446.

For B: Cf. Negs. A 447 & 459.

A black and white photograph of a rock face, possibly a cave wall or a geological outcrop. The rock surface is highly textured and uneven, with various shades of gray and white. A small, rectangular white label is affixed to the rock face in the center. The label contains the text 'G 3042 A' in a bold, sans-serif font. The lighting is dramatic, with strong shadows and highlights that emphasize the rough texture of the rock. The overall scene is dark and somewhat claustrophobic, suggesting an underground or enclosed environment.

G
3042
A

38264

NEG. A 483
(JUNE 8, 1916)
GIZA, THE MINOR CEMETERY.

Skeleton in Chamber D of Grave
3021.

4th or 5th dynasty.

See Fisher, Giza, The Minor
Cemetery, pp. 101-3 & fig. 92.

Cf. Neg. A 445 for Shaft D.

G
3021
D



38265

NEG. A 484
(JUNE 8, 1916)

GIZA, THE MINOR CEMETERY.

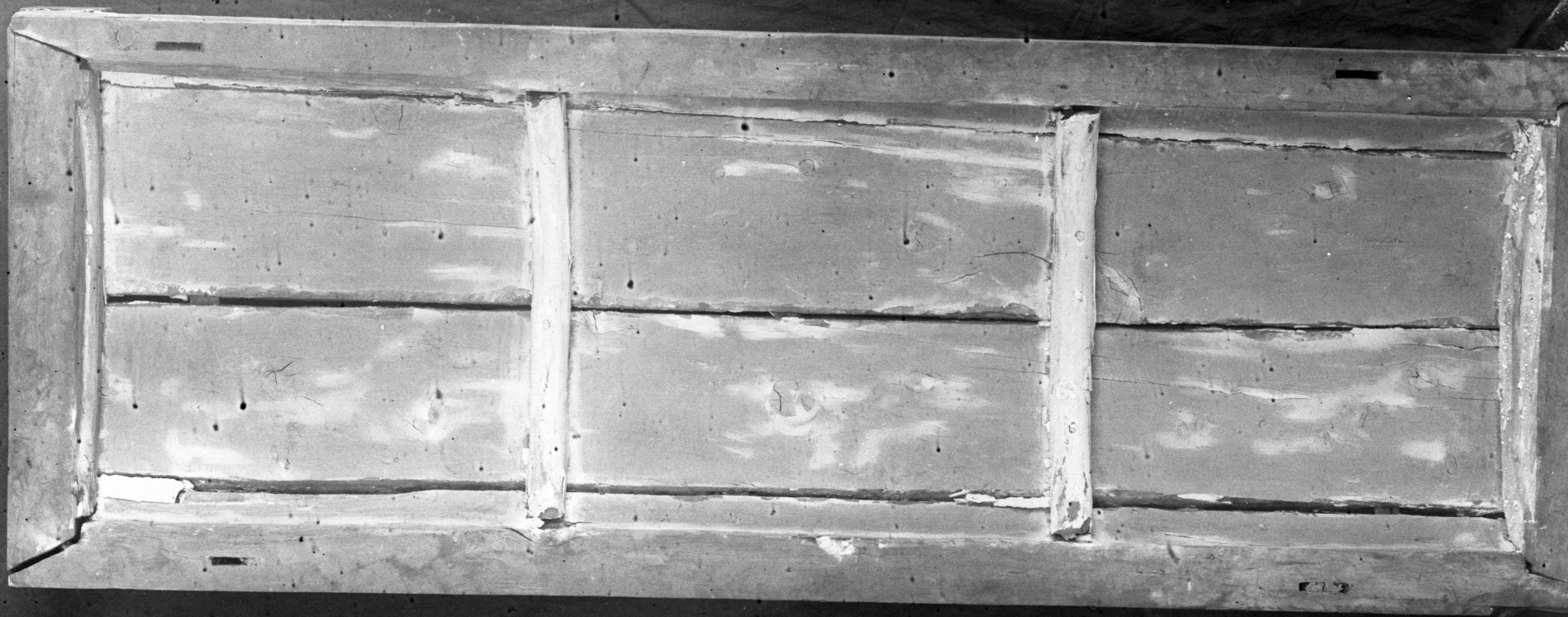
Interior of coffin lid from
Grave 3041, chamber A.

4th or 5th dynasty.

See Fisher, Giza, The Minor
Cemetery, pp. 126 - 132, and
Fig. 125.

For coffin: cf. Negs. C 601-2
and 604.

For Shaft A. Cf. Neg. A 441.



38266

NEG. A 490

(JUNE 10, 1916)

GIZA, THE MINOR CEMETERY

Two pottery bowls of the
Old Kingdom.

