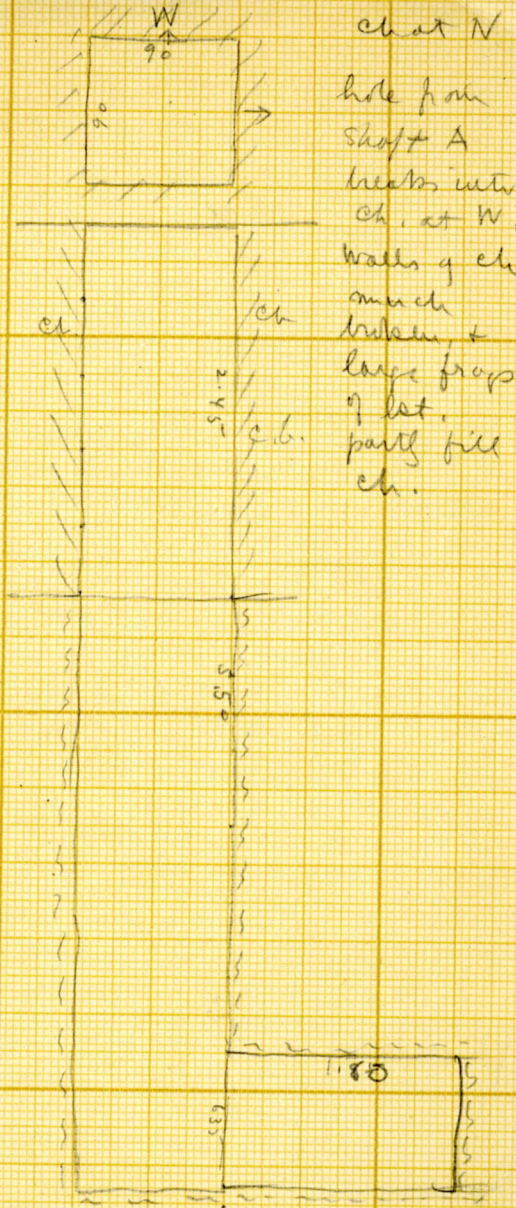


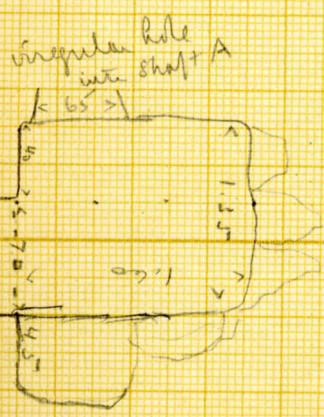
06. G 3035
c

(X)



ch at N
 hole from
 shaft A
 breaks into
 ch. at W.
 walls of ch
 much
 broken +
 large frags
 of lat.
 partly fill
 ch.

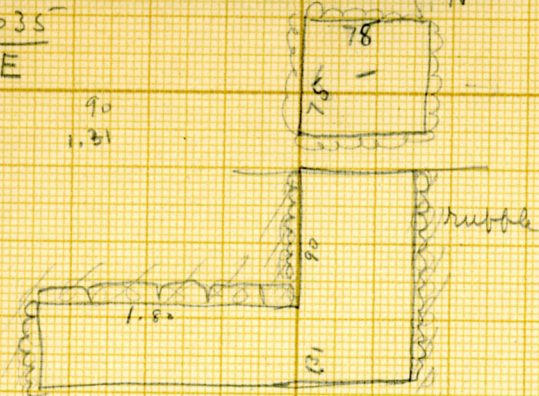
1.98
 1.04



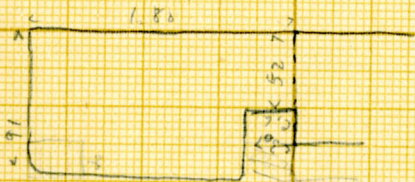
90 M/b

G 3035
E

90
1.21



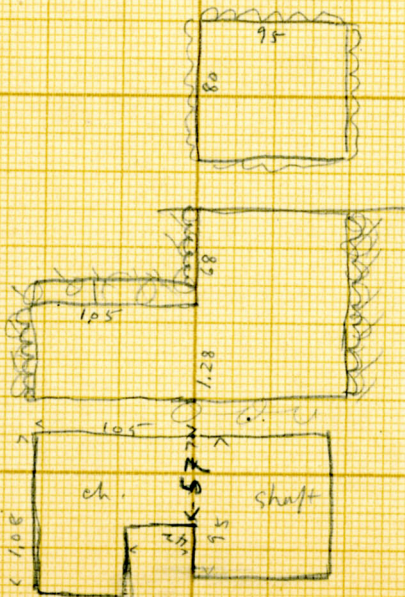
shaft
ch or W
built of
rubble
& roofed
with lat,
slabs.



G 3035
D

N

ch or W



20 May 66

5
30 35



A14



3035



A453



A476





9
3035



A460





485

9 - JUN 1916

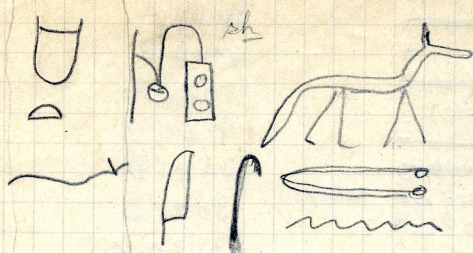
485

Σ 3 0 3

Giza

Maid. 3033

cuttel over niche - relief work



↑
scratched
rudely
on stone

hmt-
f

~~Nofretti?~~
mr tbt

ht-
low
water

The judicial scribe, Thuty, his
second wife (concubine), Neferet.

1916

Giza

Photographs -

May 29 - 300

~~2088A~~~~2089A~~

2091A

~~2087D~~

2087E

~~2087H~~~~2087B~~

2092A (inside)

2082A

2084B

2087E

2082A

2083C

2084B

2085C

~~2087X~~~~2087A~~

2095B

2090B

3042A

3042B

3020G

3020H

3041D

3021D

3020X

3010B

3041A

3008A (inside ch. also)

~~3000E~~

3000E

3010C

3000C

3031B

3021C

3012C

3000D

3031B

3013B

3013A

3013A

3023A

G 3036

letter N. = $83^{\circ}40'$

935 x 435

" W = $84^{\circ}0'$

" S = 83°

" E = $84^{\circ}10'$

reverse S = $\perp 90^{\circ}0'$

cb = $18 \times 36 \times 12$ at top
 $14 \times 28 \times 9$ below

N. ball connecting 3036 with 3033

cb = $12 \times 29 \times 9$
 $13 \times 30 \times 9$

letter shown 3033

Rubber core c.b. faced.
core built first

G 3036
B



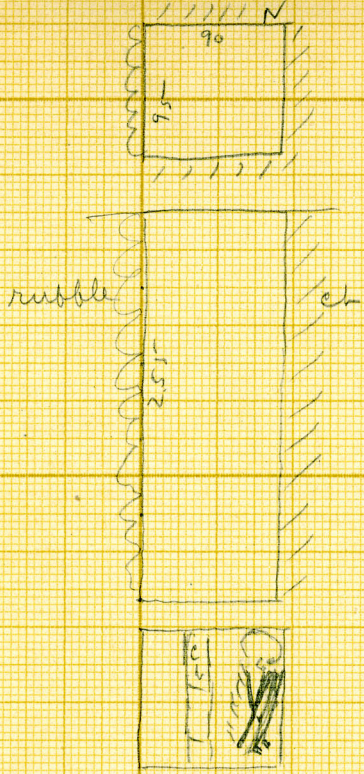
Ch at W
Pinned
elderly adult ♀
teeth much
worn

on l side
head N
face E
knees slightly
drawn up

Body somewhat
disturbed - but at a
time when the flesh
still held the bones
together - rt arm
pulled from shoulder
about 1/2 way down
trunk;
hips disjunct
+ upper end of leg
bones lie opposite
abdomen

21 May 16

G3036
D



Shaft -
Buried at
bottom
Young adult
contracted
on Δ side
head N
face \rightarrow E

21 May 6

G 3036

$\frac{E + C}{}$

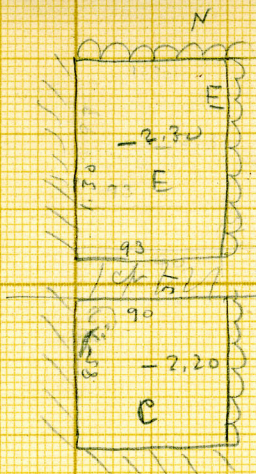
on shaft

E shaft

In bottom of C

in NW corner
Skull + part
of trunk of
adult
control
on l side
head N
foot E

90 x 85

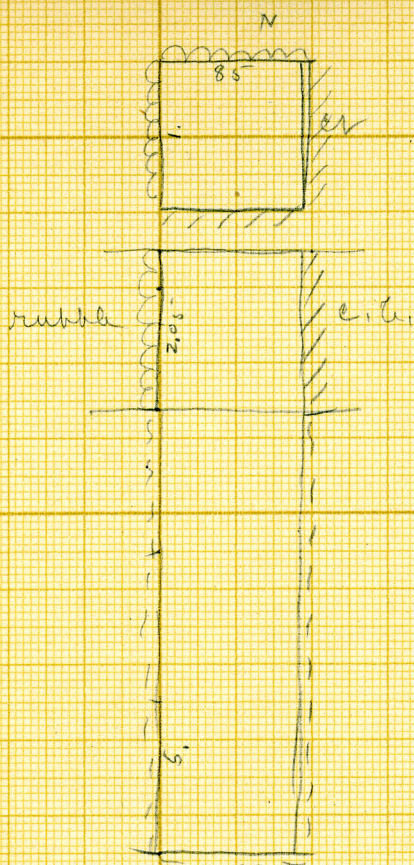


21 May/6

Division wall between E-C
+ DF rubble. also, walls c.b

G 3036
R

Shaft
Support



2) N₁₆

One from rubble above c. b
Linsen wall D F

G. 3037:

Is debris filled, stepped stone casing, the southern half of this mastaba is really a straight mud brick structure in which no shaft was found. The space between the two was joined up on the faces with roughly dressed blocks more or less matching the coursing of the northern half. The southern face was finished with mud bricks sizes 37 X 20 X 12. One double and one single niche. The space between these two mastabas was one of the surface burial the structure which runs over the remains of the northern half.

g 3037

mastaba c. b.

addition at S. end

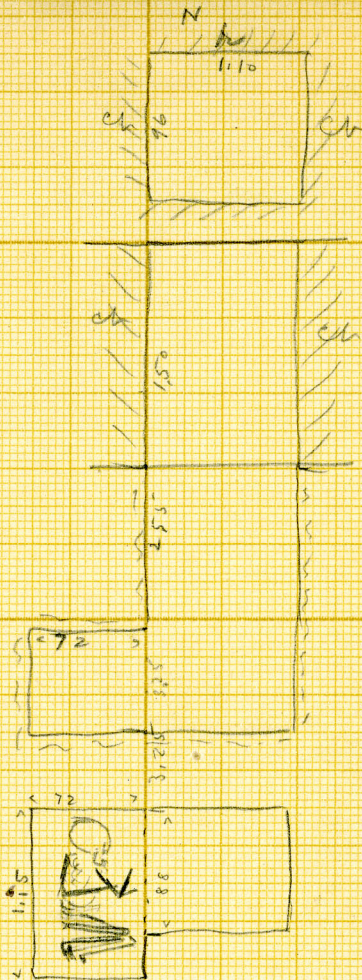
$$c. b. = 18 \times 37 \times 13$$

main structure

$$19\frac{1}{2} \times 37\frac{1}{2} \times 13$$

G 3037

sk at W



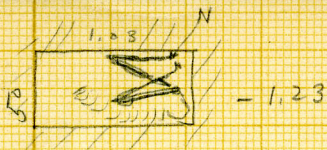
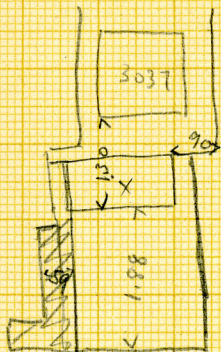
Bird -
 adult ♂
 on l side
 head N, foot
 E (slightly
 down)
 Skull elongated
 some flesh
 still adhering
 to it. + remains
 of ch. hair?
 heels up to
 hips -
 st arm bent
 across body -
 left fore arm
 raised

21 m/16

W. side all rubble
other sides c. b. with few
stones ~~rubble~~ ~~stone~~ on top:

G 3037
X

section plan



Rect
pit -
N side
2 courses
of lat
blocks
(40 high
both
together)

the rest of
the pit ch.

Burial
(adult,
skull missing
on l side,
hear W
foss N
knees up to
chest
arms?)

93040

mastaba 13.0m x

slope 26 in 200 ; 300 high

ch = 18 x 37 x 16

ht from 8-9 up = 17 x 32 x 13

large niche at N end of E face
white stucco. Then covered
thin layer gray mortar and
again stuccoed white.

Flint (B-1) found over N end,
in lat. debris.

5.13
4.15

1.18

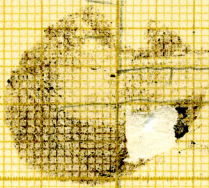
Two feet masonry north
end of wall, near
cross wall. a number
of small crescent
nips common. (Bourgeois)
rough flint speckled
gray large pebbles in.
small piece of worked flint,
910-12

G3.41
A

(1)

left block
1.20

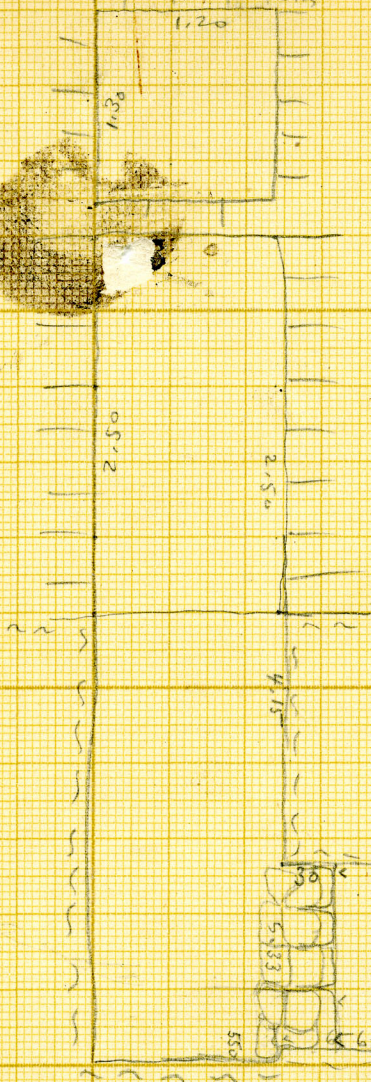
Sealed ch at E



Iron block
with rough stones +
blocks, no water

In ch. wooden
sarcophagus -
underwater -
with corn in
place.

Wood sound + good -
in better state than
coffee in 2091 A
?



Coffee
not
seen
until
30 May

for plan of ch
see sheet (2)

27 May '6

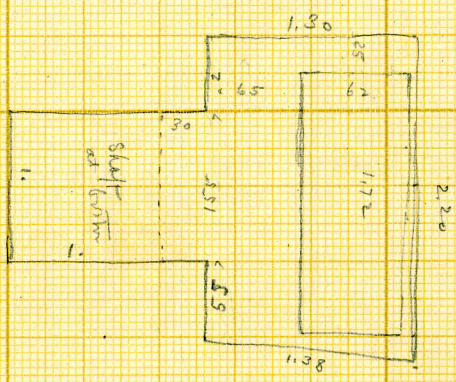
where feet stepped
dhis filling pits rubble
lined pour passer

G-3041 ()
A

(2)

Plan of ch at E

25
197



30 M'16

G 3041
A

(3)

Wooden box in
Sound condition -
fastened together with
wooden pins, cracks
& joints filled with
white plaster
Box removed 9/21
after photographing -

Case lifted
from box -
(8/21/16)
Burial
adult ♂(?)
wrapped in
- linen
~~gown~~
lying on l
side, head N
face E
knees slightly
drawn up.

6
166
172



Skull, l shoulder
bleed, ~~teeth~~
vertebral not
under wrappings

Skull (not
wrapped in
cloth) fallen
from trunk.

linen of fine to
medium fine
mesh -
worm-eaten &
falling to pieces
at a touch.

W side of box - next
door, removed in
order to photograph
interior.

Ends of legs + feet
not wrapped -
l hand protruded
from wrappings
rt arm bones out
in view.

8/21/16

of 3041
A

(4)

Bur

Burial -

Teeth show signs of decay.
Wisdom teeth gone -

Wrappings -

Two thicknesses
linen cloth like a shroud, - one piece (?)
spread over body - linen, ^{medium} mesh
under this, bandages - { ca. 7.5 cm. wide
" " " " " " " "

Arms swathed separately from trunk

Legs swathed together -

On shoulders small pads of linen with
little knot caught in holes in
2 thicknesses of bandage -

Among the wrappings on shoulder, pads
of coarse linen -

The body built up with
padding - Wrappings for most part
quite loose, made one vertical
i.e. as padding over shoulder + breast.

Under coffin - to level up floor - a layer of
powdered dirt + small lot chips.

9 Dec 16

S
3041
A



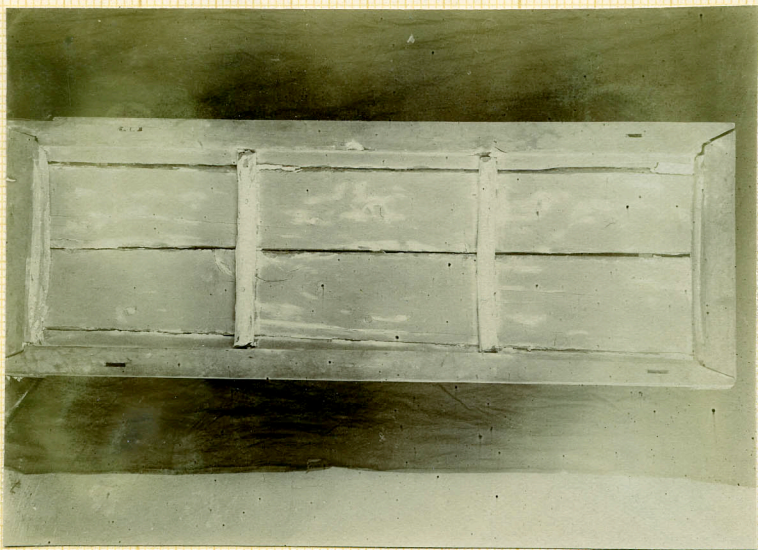
1491

Chamber view of box unopened = C.601
side of box removed = C.602
all of box " = C.603
side of box = C.604

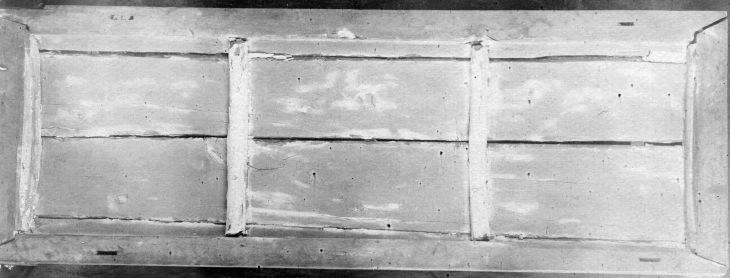


G
3041

9
3041A

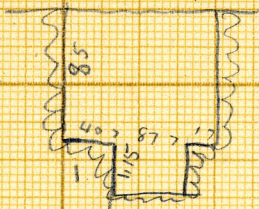
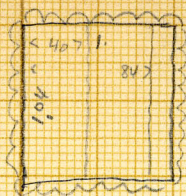


A484



G-3041
B

N. Shaft & pit



Shaft lying
on left side
head end \rightarrow E
feels no holes
down of shaft
during

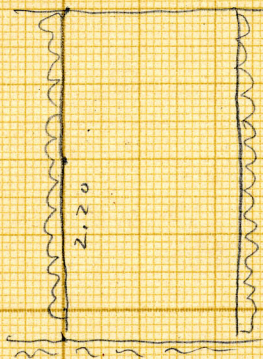
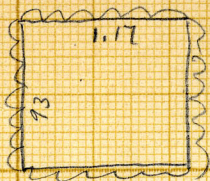
cf. C-15 for burial

27 May 16

G 3041
C

N.

Shaft

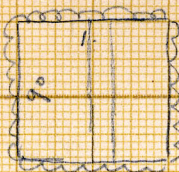


27 M_g 16

G 3041 (calls Con plan?)
 ↓
 (Northwardmost
 of shafts)

N

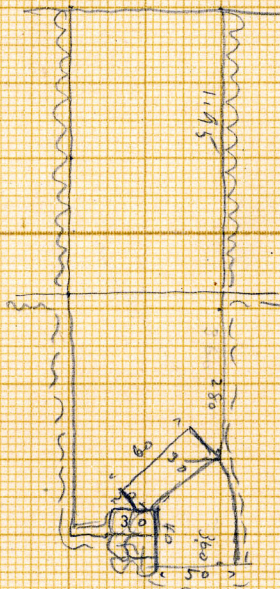
Recess at E



Put in
 bottom of
 shaft at
 E side

after N end
 a lot. block
 30 w x 60 l
 x 30 th. bones
 against E
 wall.

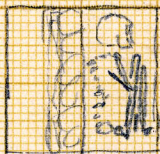
Along W side -
 put a wall
 of rough
 stones
 30 wide,
 40 h.



Boned, adult ♂
 on
 l side head
 N, face E

bones up to
 breast.

l arm under
 body & not
 visible; rt
 arm bent
 for arm, to
 breast



27 May 16

9
3041
D.



A 483



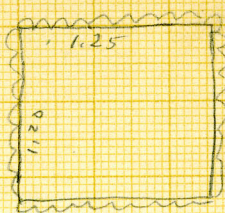
G
3041
D

G 8042

A

Abducts maintain
→ sheets

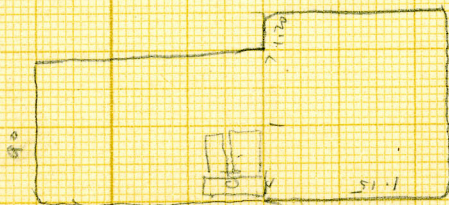
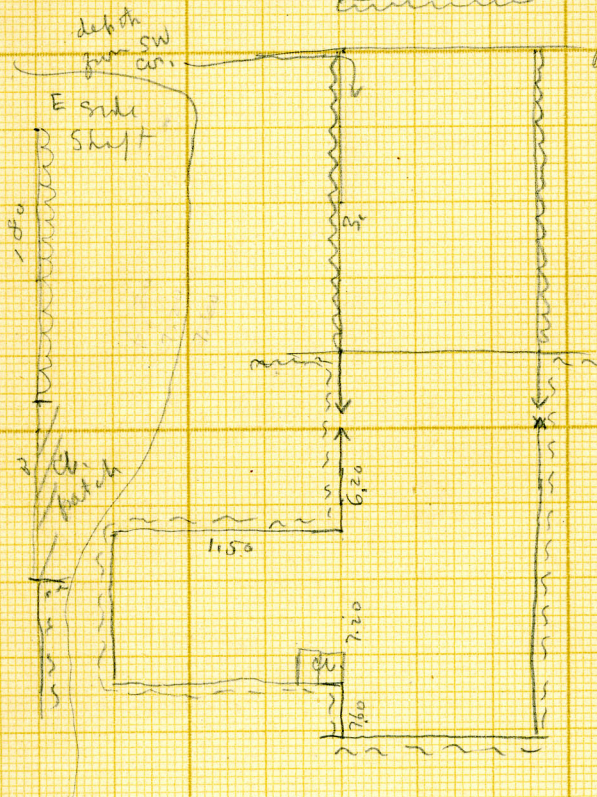
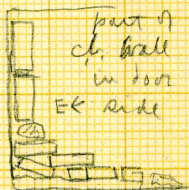
W.



ch. at S

Empty
In doorway
Remains of
mud brick
wall.

bricks ca
40x12x17



27 May 16

3142

rubble core. never
used.

S. E. angle destroyed

G
3042
A



4446
4646



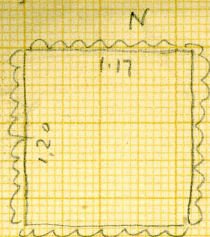
4446



A black and white photograph of a rock face. The rock is light-colored with a mottled, crystalline texture and is heavily fractured. A small, rectangular white label is affixed to the rock face in the center. The label contains the text 'G', '3042', and 'A' stacked vertically. The lighting is dramatic, with strong shadows and highlights that emphasize the rough, uneven surface of the rock. The background is dark, suggesting an indoor or shaded excavation site.

G
3042
A

G 3042
B

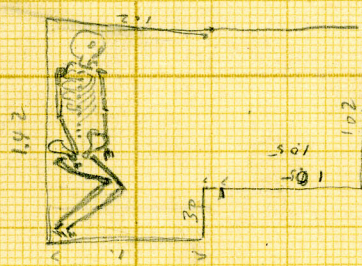


ch at W.
Burial -
adult ♀
(Teeth, including
wisdom teeth, all
fine & sound)
almost on back



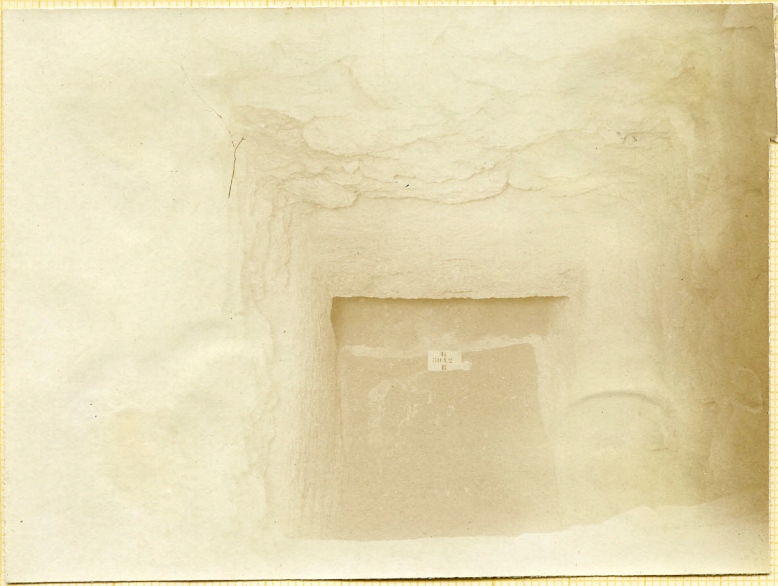
trunk very slightly on
l. side; head N
face E.
Knees drawn up
somewhat; l arm
straight; hand
under l' pelvis,
rt hand on pelvis -
Body lies on
bed of lat chips
& sand.

125



27 May 16

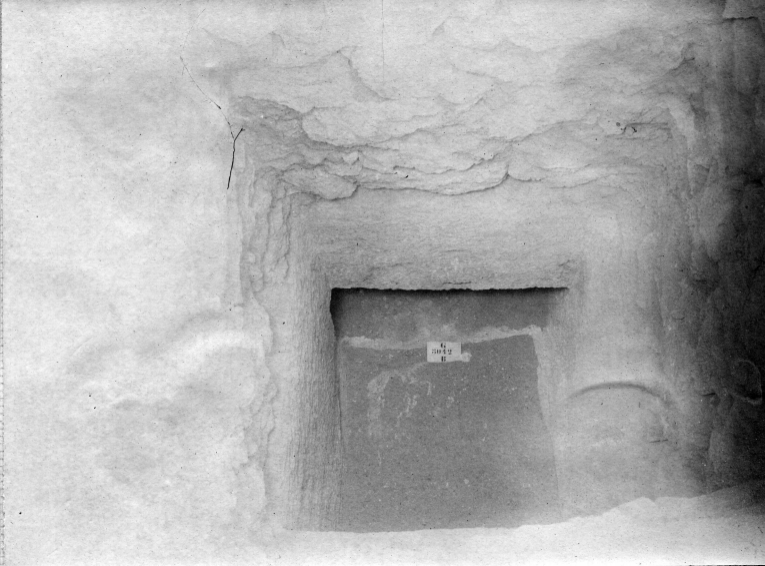
9
3042B



4497



4459



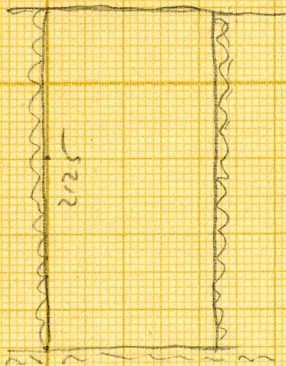
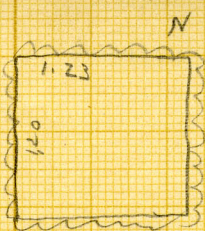
11
2004 12 11



G
3042
B

G. 3042
C

Skript



27 May 16

G 3043

batter E = $85^{\circ}5'$

6 3044

batter E face = $83^{\circ}40'$

$$cb = 20 \times 40 \times 16$$

cut space

G 304 J

$$6.87 \times ?$$

$$c h = 15 \times 30 \times 10$$

3050:

The offering room at east face is
built of large dark grey mud bricks 35 X 16 X 11:
The main mastaba is built of brown bricks 32 X 16 * 16=11
These bricks are full of small chips of flints and beads
and pottery. This offering chamber is built round the east
west angle of a rubble core mastaba east of it.

Offering Room

cf C. 14
16

In debris of offering room
a number of small ceremonial
jars & censers, one large jar
rough ware, pointed base, neck
of rough ware, rim broken.

Niche at N.E. corner had
stone slab with small
basin cut in it.