



G  
3021  
D

G. 3022.

Mastaba 560 X 320 rubble. Three shafts A. to C., arranged on main axis. None of these was ever sunk into rock.

A. Shaft: 100 X 106 - 122, lined with rubble.

B. Shaft: 107 X 112 - 125, lined with rubble.

C. 110 X 115 - 110, lined with rubble.

G 3022

Pitz

ABC

560 x 320

B of 3023

63  
1.15  
-1.10  
C  
1.10

63  
1.07  
-1.25  
B  
1.12

63  
1.06  
-1.22  
A

21 May 16

G 3023

A

2.40

well of  
Mastaba  
3033  
recent m.  
above  
other 3 shafts  
of shaft

1.25

1.46

5.32

2.32

2.32

2.32

2.32

2.32

2.32

2.32

2.32

2.32

2.32

2.32

2.32

2.32

2.32

2.32

2.32

2.32

2.32

2.32

N.B. shaft  
1 x 1 at  
- 2.30

1.06

96

Shaft at  
bottom

2 Chs. on W.

I upper ch. W

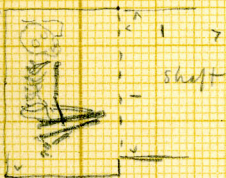
Burial - adult ♀  
on l side, head  
N. face E.  
heels drawn up to  
hips -

l arm down  
str a. ht (nearly)  
underneath body,  
rt arm strag, ht  
hand up on rt  
thigh bone.  
Head resting on stone.

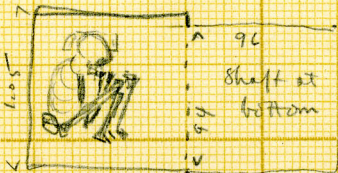
II lower ch W

Burial adult ♂  
contracted on l  
side, head N  
face E  
knees & hands  
up to face -  
head on stone

I



II



23 May 16

Est facing  
middle filed

built against 3033

3022

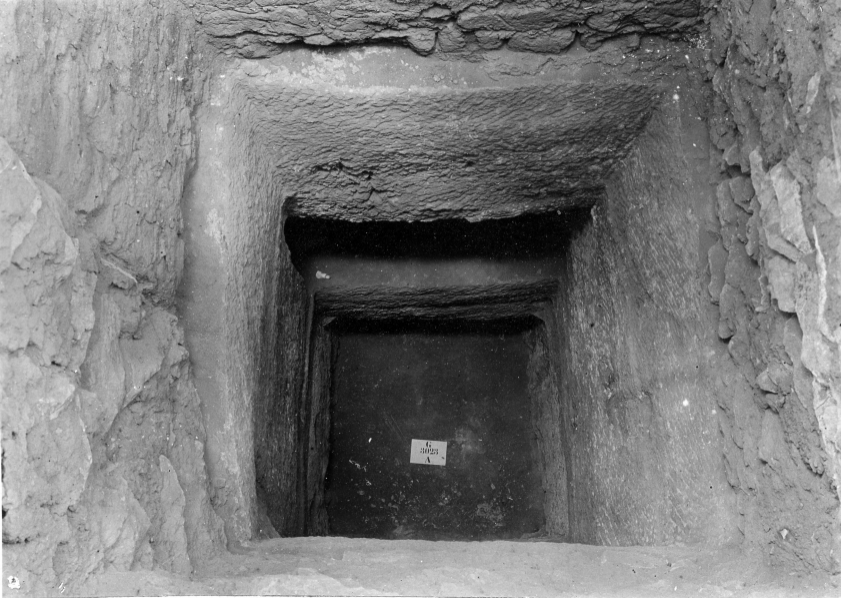
S  
3023  
A



4467



4466

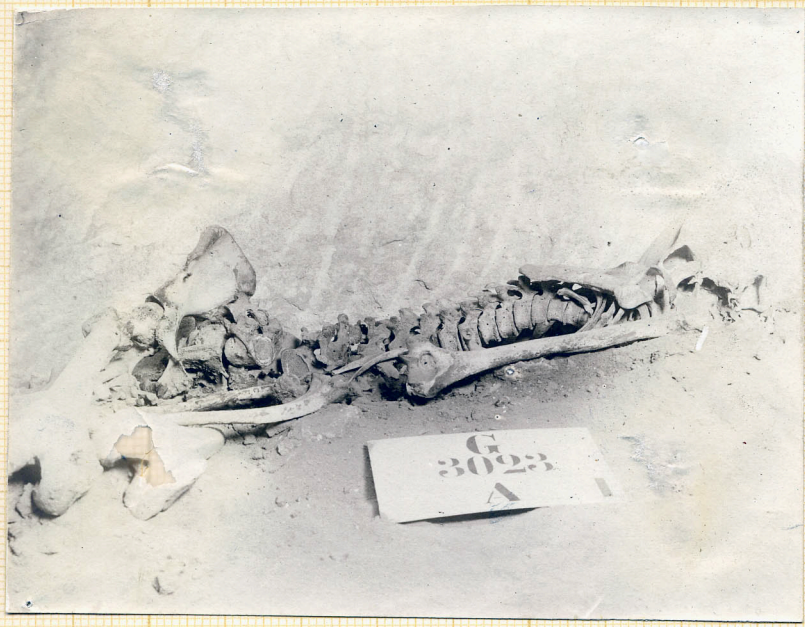


4  
31025  
A

G  
3023  
A II



S  
3023  
A



4475

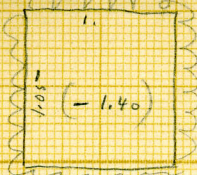


G  
3023

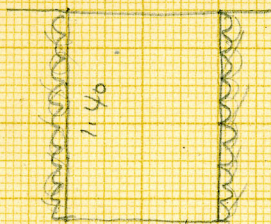
A

G 3023

B



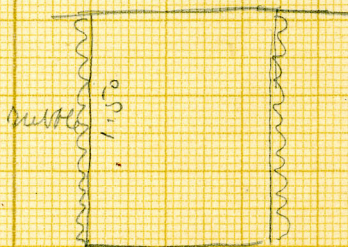
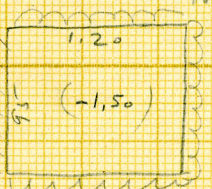
All rubble



G 3023

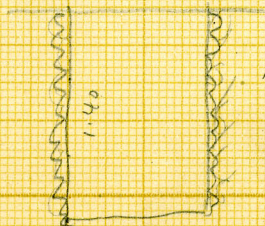
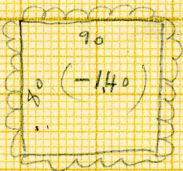
C

Ch.  
= I wall of  
Masonry  
3033



G 3023

D



23 May 6

G. 3024:

Mud brick, the thicker walls possibly filled in with debris, on upper stratum remains of rubble. In the offering room there are two double niches on south end with a single one between and there is also another single one near north end. The south niche is of limestone built up of several courses, small blocks. This stone niche is later reconstruction built into the original mud brick niching. The stone niche was inserted before the present vaulting was built. The original vaulting of the room must have been higher than the later because the mud brick niches extend above the spring of the vaulting. The room is plastered with a thick layer of mud over which is white stucco on which remain traces of painting. Under the mud layer are remains of the white stucco of the original

3024  
chamber slightly pinkish. The vault springs from a horizontal string course made of mud. The roof is reeded, six of them equaling 67 1/2 cent. each reed being one brick thick. These are plastered with mud and stucco reeded as is also the square moulding. The extension of the room to the north is later and originally had a door at the north but this had later been blocked up with bricks dark grey 26 X 13 1/2 X 9 1/2. The niched extension at the north is extension of the main structure and probably the mastaba had no offering room in its original form. The north wall is of the same size bricks as the walls of the offering room and was probably built to close up this opening when this opening chamber was built, the door to the east being the only entrance.

5/19/5  
12/17/67  
6/13

Continued:-

3024:

This mastaba is clearly later than the two adjoining ones on the west and the spaces between are filled with rough walls of mud brick and rubble.

G 3024  
Mustafa all c. b.  
kitchen. S = 81° 00'  
room E = 90° 00'  
" W = 82° 20'

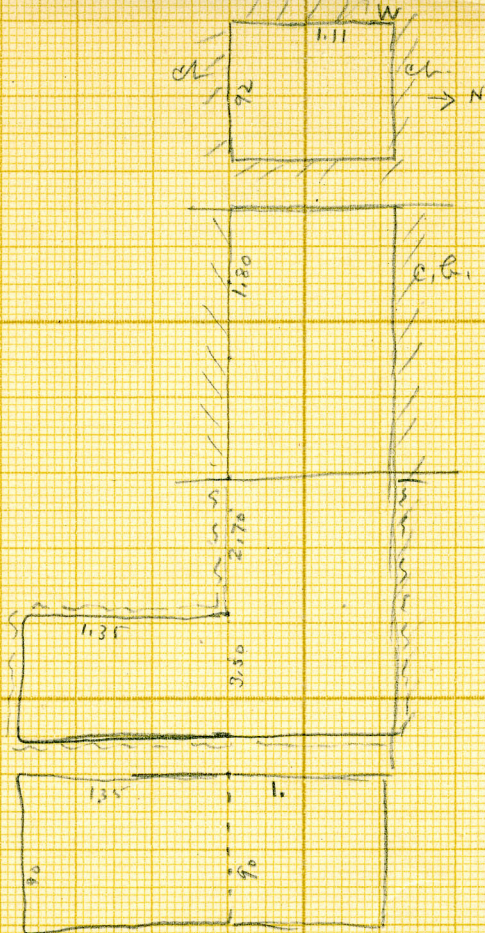
$$c.b. = (12\frac{1}{2} \times 25 \times 9)$$

main structure 15 x 28 x 9

offering room 13 x  $\begin{pmatrix} 2.5 \\ 20 \end{pmatrix}$  x 9

G 330 for main

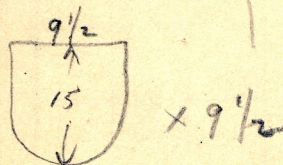
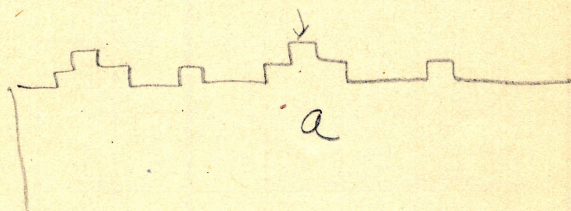
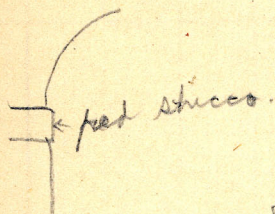
G 3024  
A



Char S  
Simple,  
same for  
leg bones of  
adult.

Solid sub.

Offering from ~~realtor~~  
with ribbed vaulting sheathed  
red  
bricks

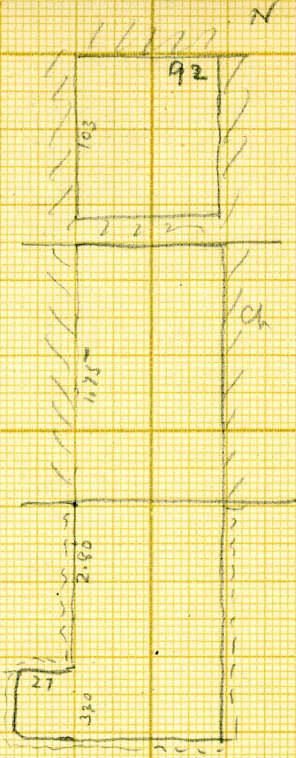


Niche A orig. extended higher  
than spring of arch. Two  
layers shown on W wall, ~~shown~~

G 3024

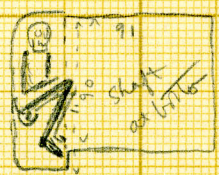
B

Rivers at W



Burial  
 adult ♀  
 contracted  
 on l side  
 head N  
 face E  
 knees + head  
 supported on  
 mud bricks -

3.30




22 m/L



Siza. 3024

structure → N

17 May 1919. 

G. 3025:

Of this mastaba the shafts A- D are built against 3005 and 3008, and and B being one group and C. And D. later. E. is a surface burial. The bricks in A. and B. are 35 X 17 X 11 1/2. In C. and ~~D.~~ they are 36 X 19 X 12. F. is a finished superstructure of rubble mud plastered which was never sunk into rock. This group is not a mastaba.

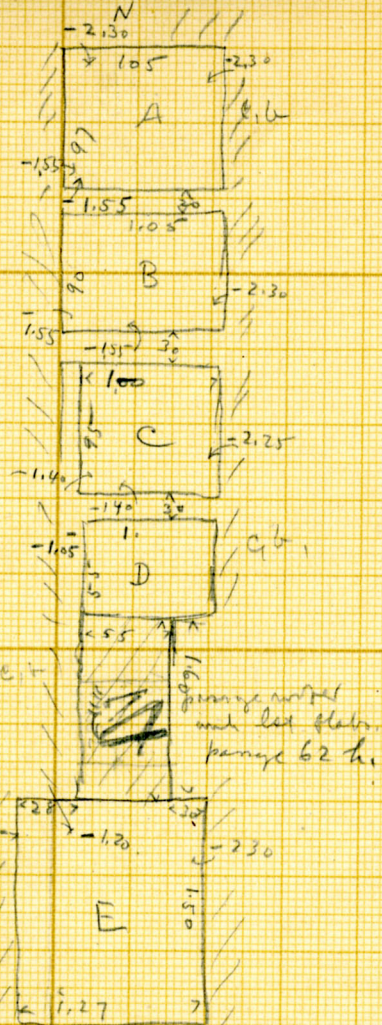
G3025-

Ch. Shaft

A  
B  
C

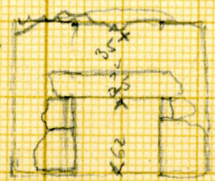
D (passage at S  
into E)  
in passage  
burial

E  
F



In passage  
Disturbed  
adult  
burial -  
contractor  
on E side  
head N  
facing E

In F disturbed  
adult burial -  
skull missing

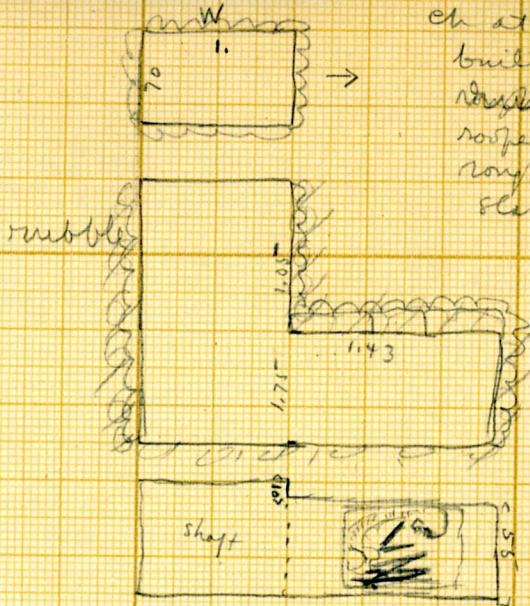


20 May 66

3026:

Was a debris filled with rubble casing wall outside of which was stepped facing. This mastaba is older than 3035 as the masonry of the latter is built over it. In 3026 are two periods construction. The rubble core at the north has the mud plastered face over which is a stepped facing. The southern section is rubble filled inside of a stepped facing the mud plastered face in the outside of the line of the other facing and has a different orientation.

G 3026



ch at N  
built of  
rough stone +  
roofer with  
rough lat  
slabs.

Burial -  
adult ♂?;  
contacted on  
l side, head  
N, face E  
heels drawn up  
to hips

Bone remains  
of wooden box  
with red  
painted exterior.

20 May 6

Rubble core stepped as to  
facing

3030:

The niching at the end of the offering room has round log lintel which is evidently a later insertion as the original niche extended much higher.

G3030

mostaba rubble core, facing  
rough l. r. blocks coursed.  
then finished with c. h. facing.

cols = 21(20) x 40 x 15

On W face the lower 5 c. are

22 x 44 x 18

above 20 x 40 x 15 3000

better 28 in 200



In debris in passage south

of 3030

small offering cups Nos. 2-9

flint spear head No. 19.

+ 3 large red pottery jars (Storj's mine)

at edge of pit in street between

3030 and 3040

flint No. 10

offering cups Nos 11-12



G-3.30  
A

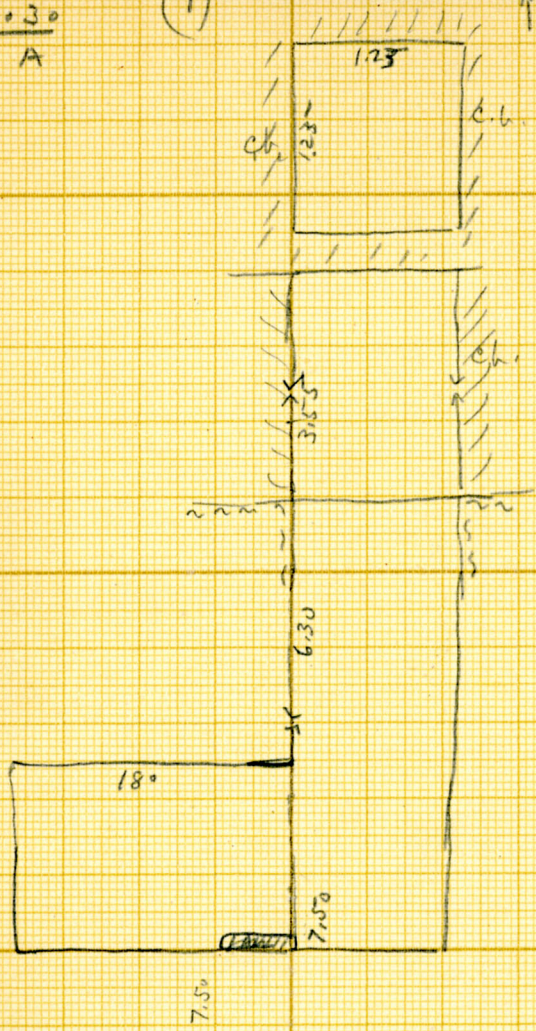
(1)

Chat W  
Empty

Interior of  
Shaft  
-3 to -3.55

shows coarse  
concrete plaster  
over mud bricks.

In bottom of door to  
ch. 1 row of large  
c.b. + at S end  
part of 2 rows - all  
laid headers -  
4x21x10



for plan of chamber  
see (2)

10 Feb 1916

G 3030  
A

(2)

N  
↑

plan of ch -

ch. regularly  
cut -

Striking to  
wells & in  
sand on floor  
lots of dried

grass - ~~is~~

shaft ch. has been  
open &

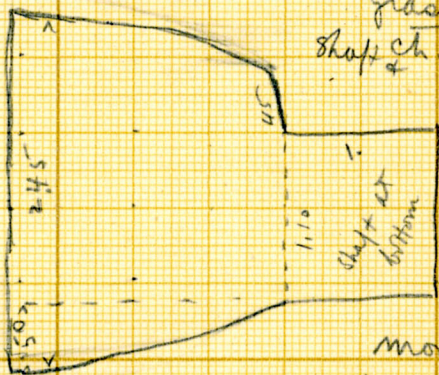
recovered

this from  
blow in

chamber  
smells

mouldy -

as from decaying  
organic matter.



10.2.16



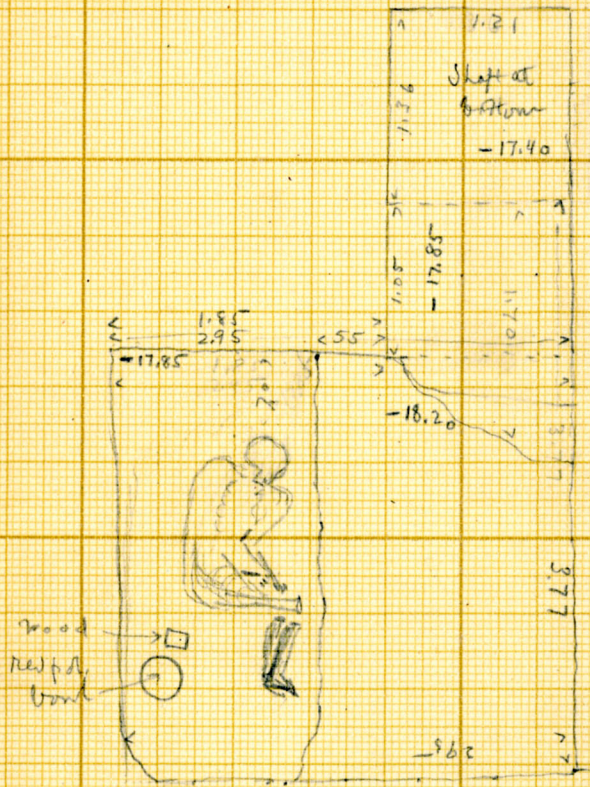
G 3030  
B

(21) W

Sheft & ch.

full depth  
17.85  
to top of door  
16.86

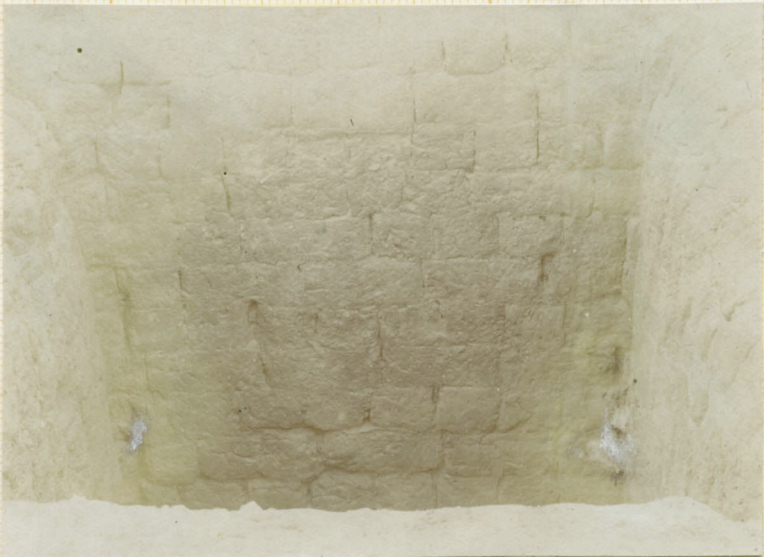
W ←  
N ↑



Ch at S  
Burial of  
adult ♀  
with ~~one~~ bound  
body wrapped  
in fine linen  
- lying on l  
side, head  
N, face E  
knees drawn up  
upplg legs, at  
ret l.s to body,  
l arm, under  
body, at arm  
bent, v. both  
hands in part  
of abdomen.

A red polished  
bowl .225 d.  
beneath a small  
rect. piece of  
wood, 13x8  
At least 4 stones -  
Body lying on a  
bed of stone chips  
filling W half  
of ch. (ht <sup>2.5</sup> 3.5)  
Under hips a  
stone

3030  
B



5  
5

Detail of burial C 611

A 488



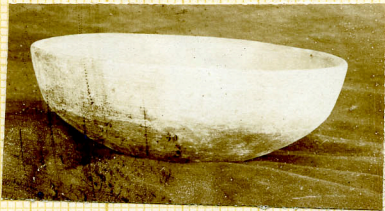
A 481





11

5  
3030  
B



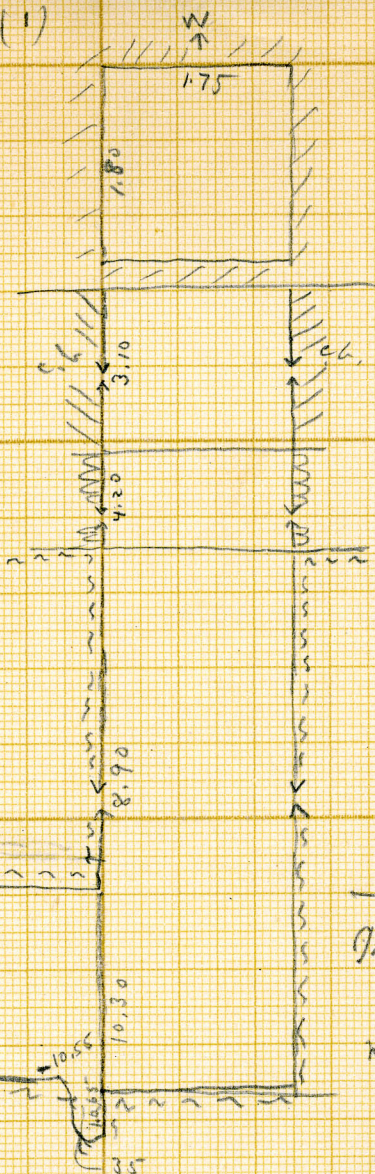
A490/2



G 3030  
C

14.30  
10.65  
890

(1)



Shaft -  
ch at S  
empty -  
no trace of  
wall in  
doorway -  
ch. apparently  
unfinished -  
roof & walls  
well finished  
floor uneven,  
N.B. cutting  
at door in  
floor - pre-  
paratory to  
removal of  
rock to greater  
depth.

Iron sand at depth  
of 7 m from top  
was found 2  
small eggs  
(bird's?)

9 Feb '16

for plan see next (2)

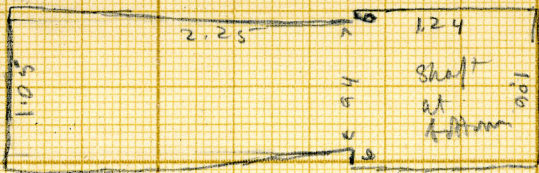
G 3030  
C

106  
12  
92

(2)

ch at S  
plan -

W  
↑

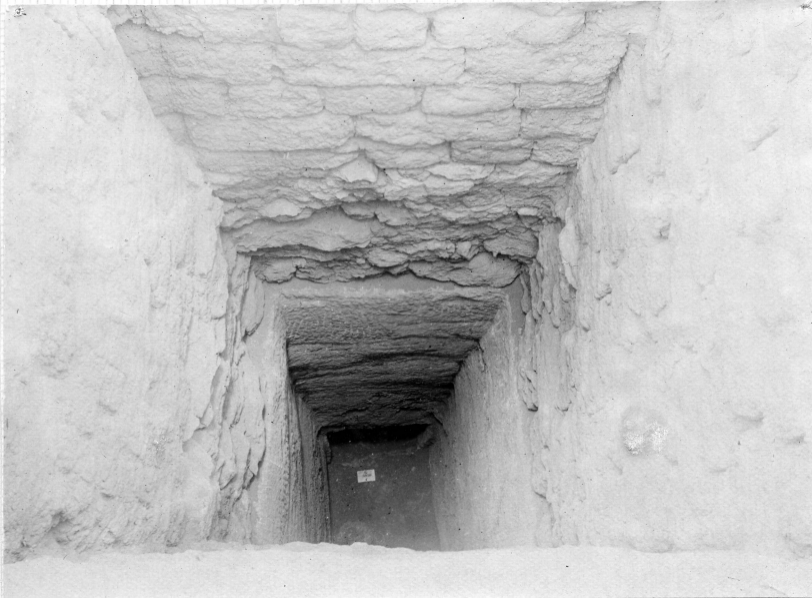


9 2/16

G  
3030  
C



A409



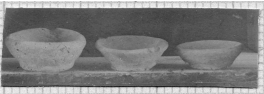
G  
3030  
etch.

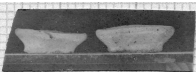


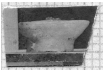








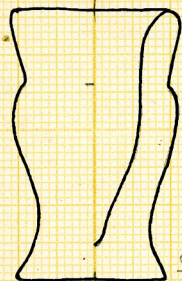




3030

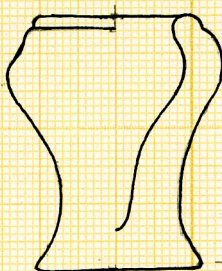
S. of

x



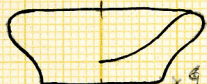
1/2  
coarse red ware

G  
x1

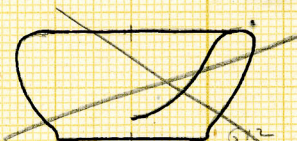


coarse brown ware

G  
x2

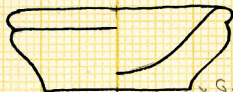


x43  
red with an



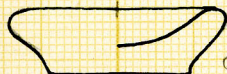
~~brown ware~~

G  
x2



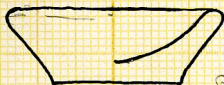
x44  
brown ware

G



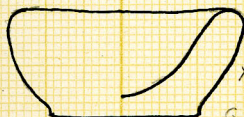
x45  
brown ware

G



x47  
red

G



x46  
brown ware

G

G. 3031:

The mastaba built against the north end of east face of 3030 has irregularly built stepped face. The stones have rough convex faces and in many instances have nor regular steps.

3031

Mastaba rubble core  
roughly squared lat. fittings.

later than 3030 or 3021

built against E face of 3030

In axis of chamber frag of wall

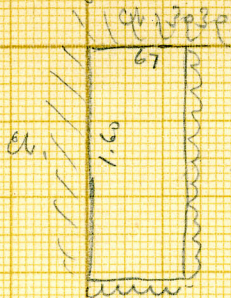
N 14 ~~46~~

C. 266

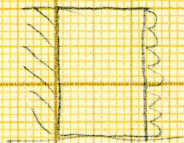
G-3031  
A

- with a frame

N



- 85+



along top N side  
large bricks

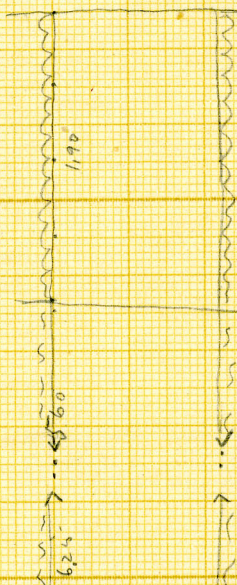
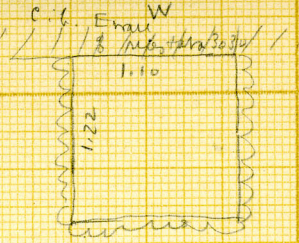
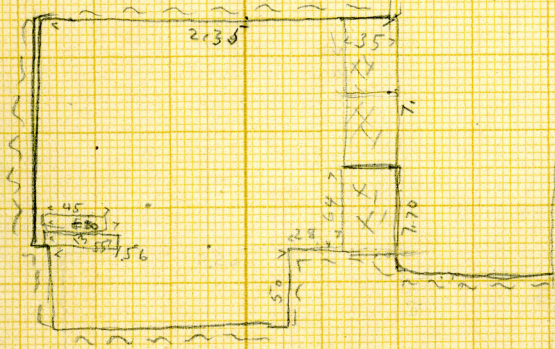
27 M/16  
f

G 3031  
B

(1)

Painted Mason.  
in debris at  
bottom of shaft.  
found 26 M16  
= C-609

for plan of ch  
see sheet (2)



ch at S  
with more pit.  
E wall  
floor cut  
originally full  
width of  
shaft; N  
side then  
built in  
with roughly  
square blocks  
of lat laid in  
pinkish cement,  
the pier has a  
finished S  
face. later on  
The rest of door-  
way was sealed  
with rough  
stones; lower  
part of doorway  
state dis. this  
fuller wall in  
site. Spang blocks  
from door  
in shaft

Ch. empty -  
pit had 3  
concrete slabs -  
1, in place over W  
end of pit  
82x35x13  
2, pulled off, it lying  
on top of 1,  
78x45x8  
3, leaning against  
E wall,  
78x43x11

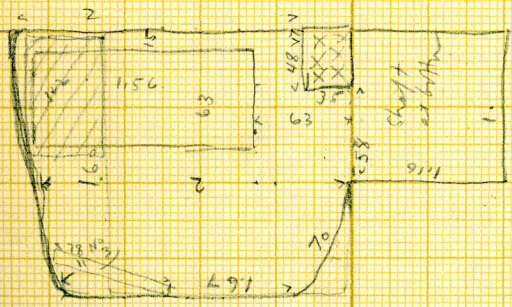
27 May '16

Prof. E. M. C. L.

G-3031  
B

(2)

lower part of  
shaft, & chamber  
- study cut in  
rubble lot.



27 May 16

1.6  
1.5  
1.3

5  
3031  
B



A 457

A 458



A 473



A black and white photograph of an archaeological site. In the center, a rectangular label with the text "G 3031 B" is placed on a stone block. To the left, a large, rounded stone is visible. Below the labeled block, a rectangular opening or niche is visible, containing some debris. The background shows a rough, textured rock surface.

G  
3031  
B

G 3031

B

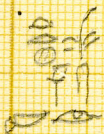
(In ditris at bottom of shaft)

Inscript. in black (dark grey) paint (mat) on lat. black. Two horiz. lines, rt to l. lower rt corner of block broken off - frag. intact.

.910



cr. 1.452  
1.276

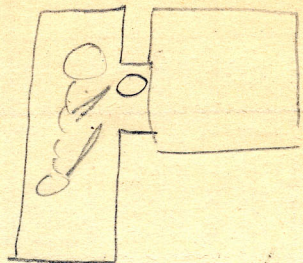


ir-ke



G 3031/B

26 May 66 (excavated dated 27 May)



G 3031  
C

Ch at F

Burial

young adult ♀

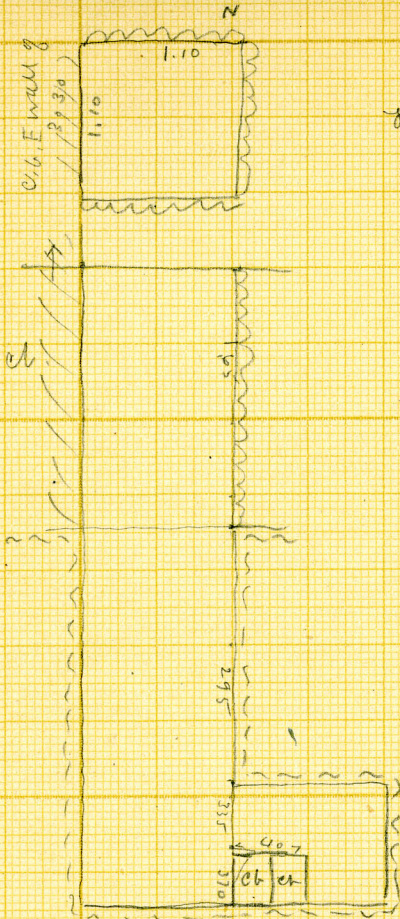
control clear on l

side, head N

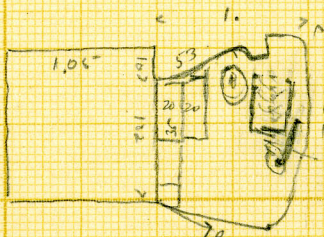
face E -

Disturbed -

295  
335  
370



In bottom of door  
1 course of mud  
bricks remaining



27 May 16  
f

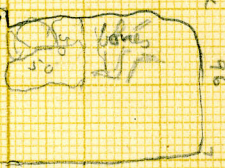
G 3031  
D



Ch. at E

Burial  
disturbed  
a few small  
scattered  
bones; those  
of a child  
or very young  
person.  
Skull in figs.

In bottom of  
door at N side  
found rough  
stones, no  
mortar -  
other stones from



door, lie in  
bottom of  
shaft.

On top rubble on S. side  
a c.b. wall, brick thick .33m.

G 3032

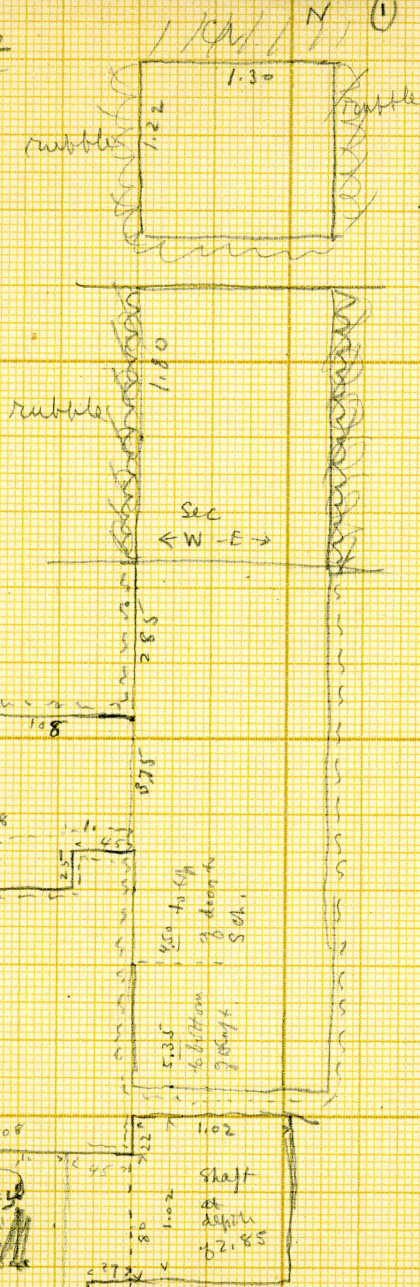
Mastaba s. b.  
rubble core. faced  
roughly squared let. course.  
against S. face of mastaba 3033

G 3032

A

H

(I)



2 chests

one on W

one on S

for Sch on that (2)

ch. at SW

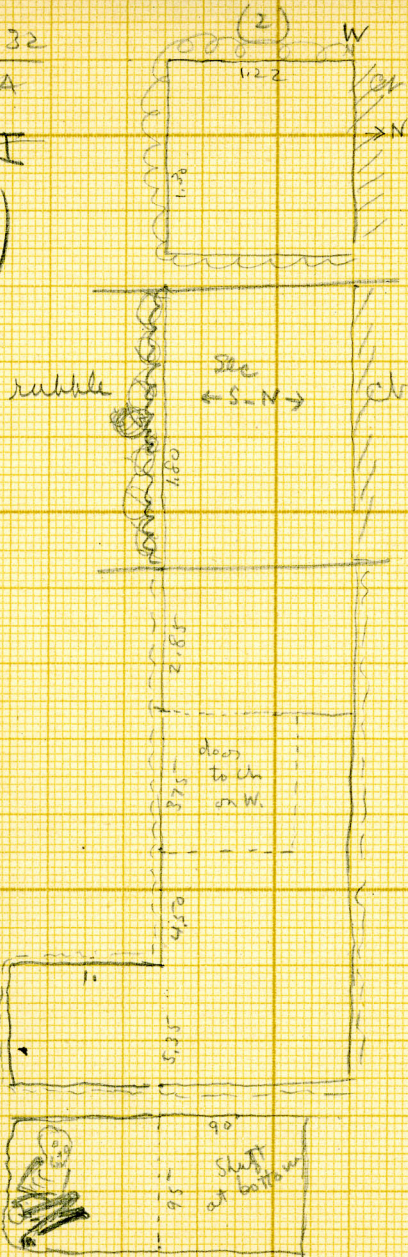
Buried adult ♀  
 contracted on l side  
 head N, face E  
 knees up to chest  
 arms also  
 apparently up to  
 chest.  
 body on bed of  
 fine sand in  
 rock cut pit

G 3032

A

I

(II)



Chat 5

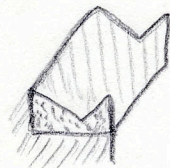
Burial -  
 adult ♀.  
 contracted on  
 L side  
 head W  
 face N  
 arms folded  
 across abdomen  
 heels up to  
 hips - layer of  
 sand under body  
 slightly damp -  
 bones browned  
 by moisture (?)

22 May 16

G. 3033:

Brick face, debris filled. The offering wall is built against it later. East face has four double niches and three single once arranged as shown in plan. The offering room is built against the face. On south end was a recess which had an arched opening into main chamber. In the east face was a small window with a slab of stone as a lintel. The main room was vaulted with a reeded ceiling, two bricks to the reed and the bricks were made of a special interlocking type. In the upper parts of the walls there are repairs with dark grey bricks 38 X 19 X 17. The niches had well finished stone log and

flat lintels but the north double niche had merely flat & roughly worked block. The vaulting started from a wedged shape layer of mud laid on the upper course of the vertical wall.



The bricks in the vaulting were started as shown in sketch the voussoir bricks were probably six and the method of making the joint in the middle of the arch is not certain. These arches are preserved only where they have been supported on the later division walls in the offering room. The sinking of these new burial chambers destroyed the vaulting naturally. There was one row only of interlocking

3033

bricks. Outside of this the bricks were laid in more or less horizontal courses with lots of mud and small stones to bring up the levels with the finely laid rows in the face.

3033

machete c b

begin W face =  $74^{\circ}30'$

bottoms: E face =  $82^{\circ}30'$

" room W =  $75^{\circ}20'$

" " E =  $89$  (ie.  $90$ )

$$c b = 15 \times 29 \times 9$$

purchase, permit Schef

middle niche block =  $\$50$   <sup>$a = C261$</sup>   <sub>$b = C261/2$</sub>

~~$\$50$~~

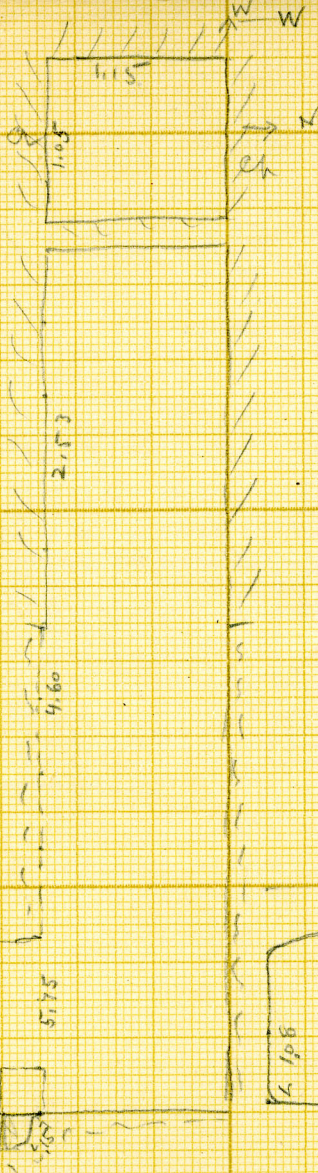
$$S. niche = 11051 = C261$$

G 3033

Chat 5

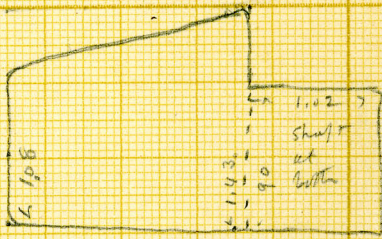
A

not on plan  
(see over)



In down crag  
Part of ~~the~~ wall,  
3 roughly  
squared blocks  
of lat - laid in  
mortar & cement.  
2 in bottom  
course (5 side)  
1 in 2<sup>nd</sup> course.  
ht of blocks  
ca. 30 cm.

In ch, chunks of  
stone, some roughly  
squared blocks -  
a few adult bones -  
in cluster & skull  
leg bones, arm bones  
& ribs - scattered.



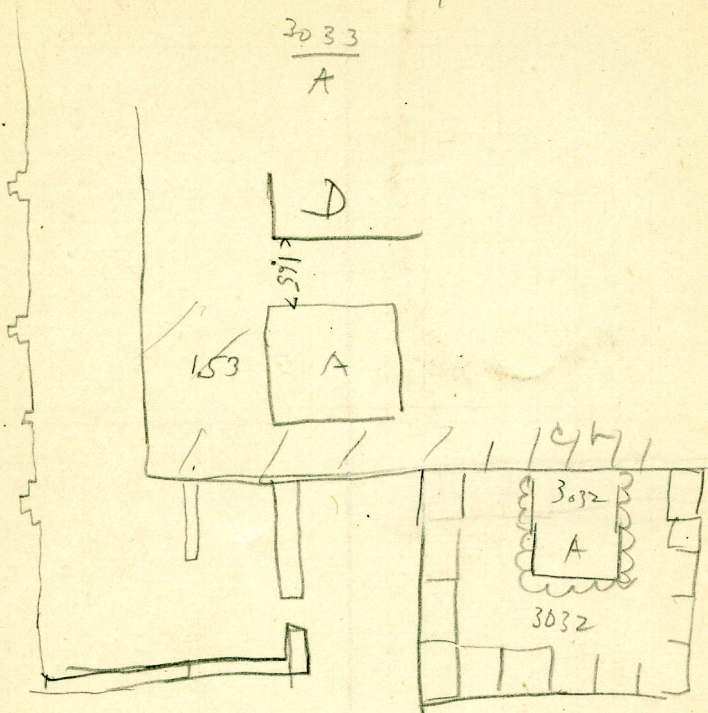
22 N/16

over

Location 7

3033

A

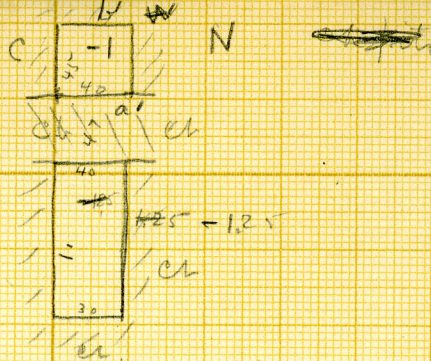


G 3033

C + B

X ~~not in plan~~

not proved -  
but chambers B  
made  
by building  
c. b. walls  
a, b' in  
through passage.

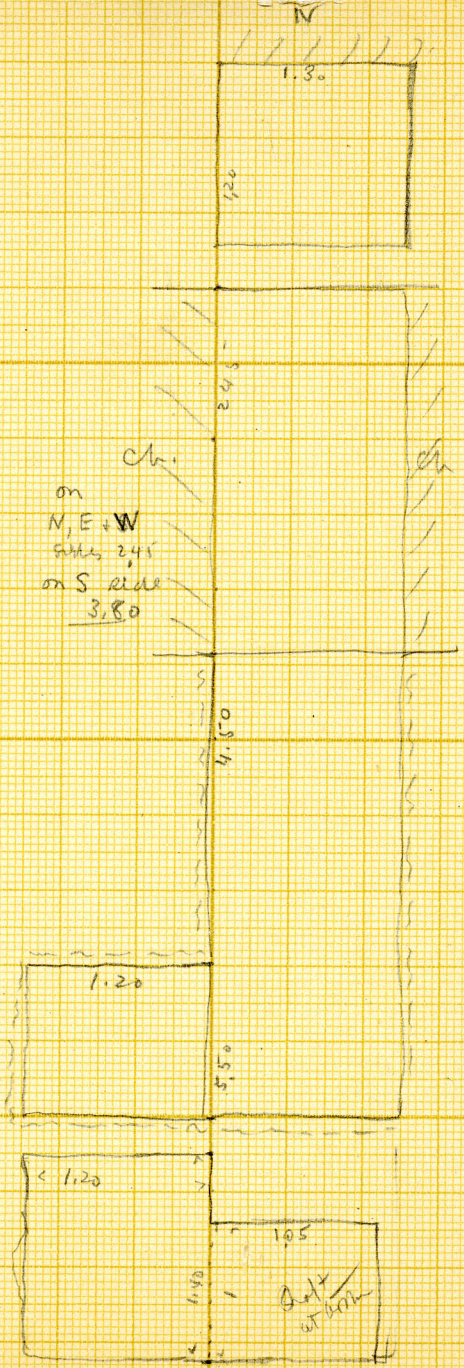


21 May/6

G3033  
D

ch at W.  
Empty

roughly  
square  
blks of  
lat in  
bottom of  
shaft;  
a few in  
ch.



ch.  
on  
N, E + W  
sides 2.45  
on S side  
3.80

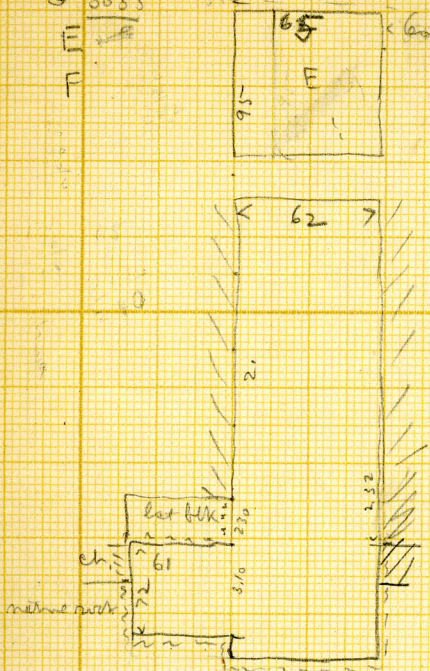
1.05 x 1.05

22 M 76  
0

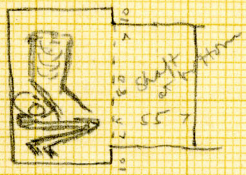
G 3033

N 255

Burial -  
adult female  
skull missing  
sore for lower  
jaw -  
Wisdom teeth  
through - all  
the teeth sound



Trunk of body  
on back, very  
slightly on left,  
head N - upper  
legs at rt LS to  
body, heels up to  
hips



Chamber partly  
built of ch -  
roof with lat  
slab -  
inside white  
plastered -

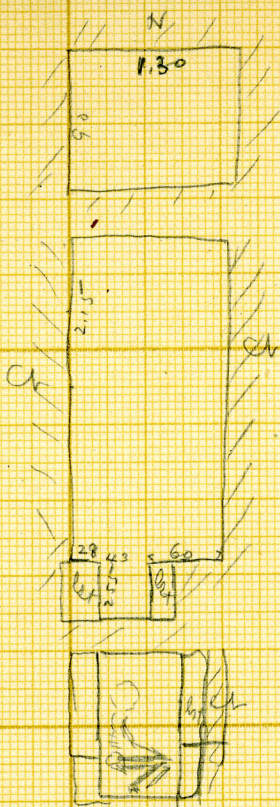
21 May

G 3033

F

190  
65  
255

28  
43  
60  
131

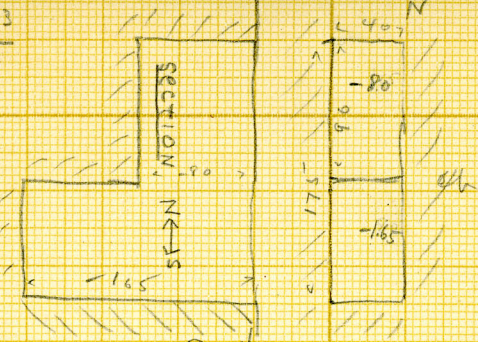


- Burial-  
 Thompson  
 (child?)  
 contractor  
 on l side  
 head N  
 face E  
 bones disintegrate

21 May '16

Put

G 3033  
G



→ S  
← N  
1.65  
1.20  
1.75  
4.07  
0.96  
1.65  
SECTION  
SECTION N ← S  
Sec. NS Run E

~~SECTION~~  
SECTION

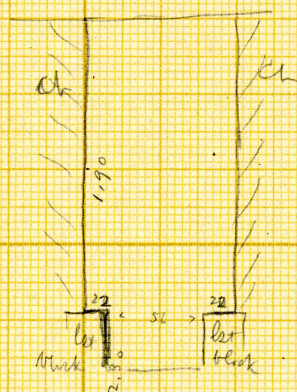
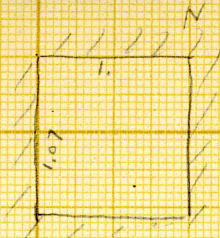
21 May '16

G 3033  
H

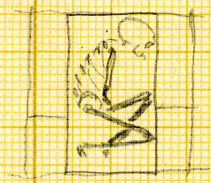
Shaft

Burial

adult ♂  
on l side  
head N  
face E



56  
40  
70



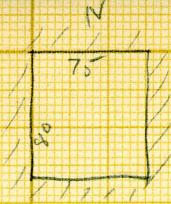
21 m<sup>2</sup>/6  
7

G 3083

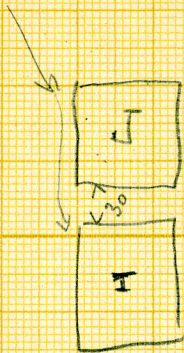
P. 5

I

Wurmpflan

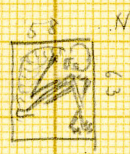
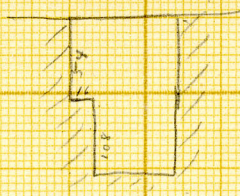
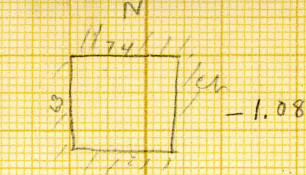


- 1.20+



G 3032  
J

74  
76  
58



Shallow  
shaft  
Burial  
Young adult  
(wisdom teeth  
not through)  
Contracted on  
l. side  
leaf F  
for S

21 May 1966

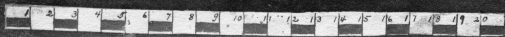
5  
3033



417

Arch = C 76  
C 77

arched niche at N. end = C. 50





Piza 3033

window in office

room → E

17 May 1919

3034

mostata ch face above  
filled.

$$ch = 12 \times 24 \times 7 (7\frac{1}{2})$$

$$wall = 11 \times 25 \times 9$$

walls of offering room

$$10\frac{1}{2} \times 22 \times 8$$

G 3034

ch at E



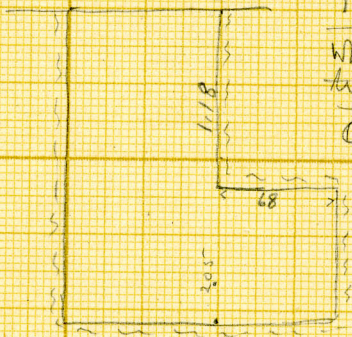
Abundant remains  
of wooden coffin  
ca. 1.60 l x 57 w  
(over all)

ht (?)

ht of side panels

.36 panels 02 thick

heavy frame ca 05<sup>m</sup> x 0.9 h.



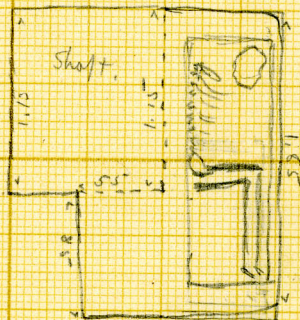
White ants had left  
traces on walls.

Coffin sheltered +

burial disturbed.

Adult (skull  
in box) on E  
side, head N  
face E.

knees up, upper  
legs at rt of  
to body.



c. b. covered  
with felt. Para para

4  
303A



48





Sign 3034

filling

→ S

17 May 1919

G. 3 035:

Debris filled inside rubble face, outer casing brick. The large offering room at east was of mud bricks brown 32 X 16 X 12. Later the entire mastaba was faced with stepped stone work which was built over the remains of 3034 on the south and 3026 on the east. In the south wall of offering room near south east angle was a small recess in which were two wooden figures concealed under the plaster of the wall. This recess was blocked up and concealed by the mud plastering of the wall. The recess itself was mud plastered with white stucco. In the western face of the offering room is a stone niche block and part of the wall.

Continued: -

3035:

is faced with stone. The original face of the mastaba has a thick layer of mud with white stucco.

93035

latter

$$W = 86^{\circ} 20'$$

$$S = 88^{\circ} 15'$$

G 3035

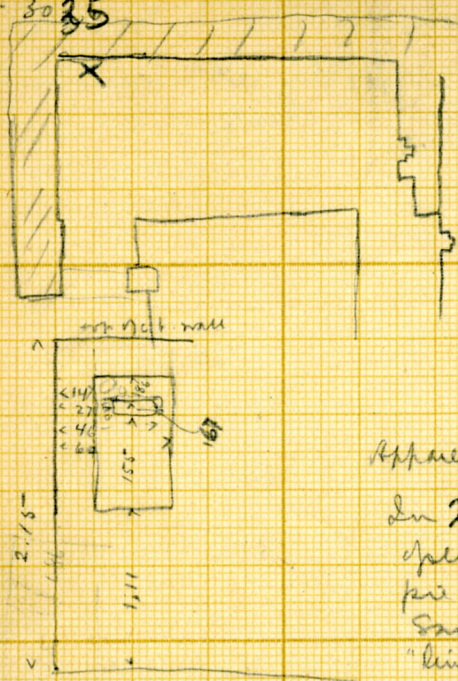
tatter  $E = 83^\circ$

stone niched sand =  $87^\circ$

main east wall

$cb = 17 \times 35 \times 12 \frac{1}{2}$

G 3035

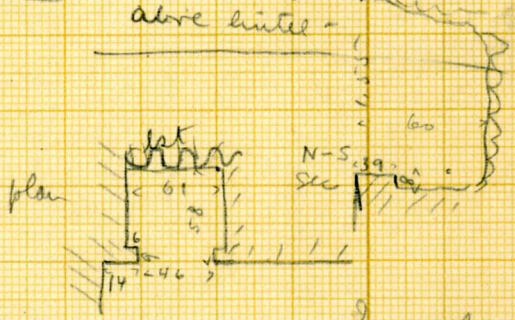


Rect. niche  
in N face of Small  
of ~~Room~~ at N-  
opposite door with  
no finished relief.  
Niche at X,

Wall photographed  
5 June 1916

Bricks removed 6 FT 1/2  
+ photo. again made.

Apparently because of bricks -  
In 2<sup>nd</sup> course down - a small  
spig - "hinted" a small flat  
piece of rough stone.  
Small pieces of "support"  
"hinted" + 3 other stones are  
above hinted -



1. a man - 50+ to neck
2. " woman

In niche  
remains of two  
standing wooden  
figures - destroyed  
by wheelants  
1. one w l. larger ht  
2. " " at ca. 45 l.

a few bits of charcoal  
(palm wood?)

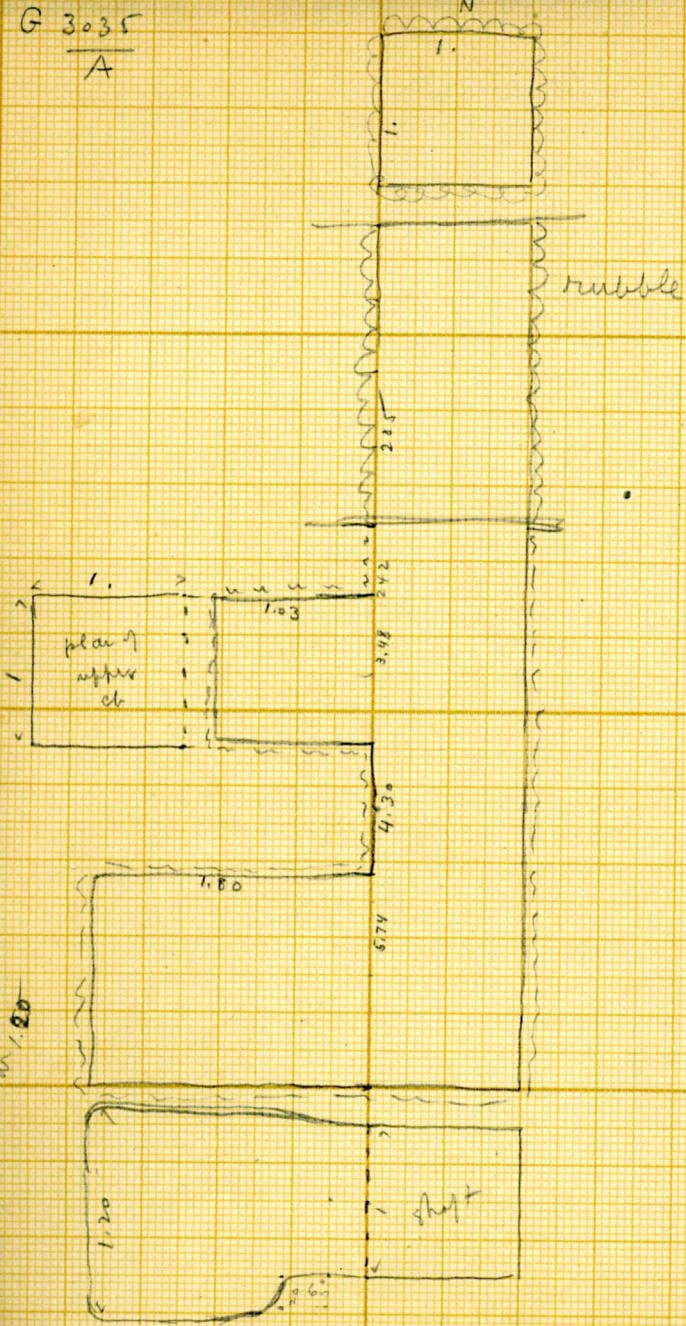
6 June 1916

(over)

Interior of niche - mud plaster + painter  
white - the figures packed all round with  
broken mud bricks and chunks of stone.

G 3035  
A

2 chs at  
west -



20 Mu/b

rubble core . e. b. faced

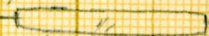
G 3035  
B

ch at W

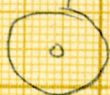
In M,  
Skull +  
a few  
vertebrae  
of adult.

In debris  
found as beads  
of a greenish blue

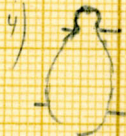
- 1) small discs
- 2) cylinders



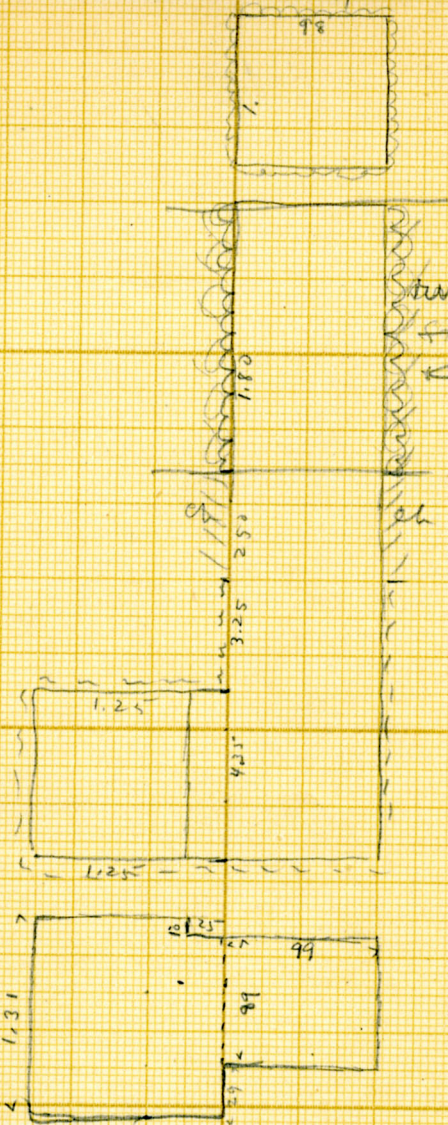
6 of this  
shape



1/1



2 of  
1/1 - this  
shape



58  
59  
128

20 May 6