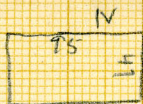
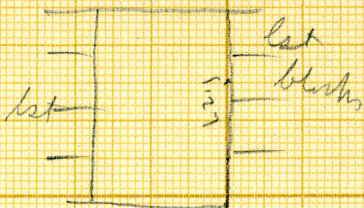


G 3010

Serdab.



Built of
well faced
lat. blocks



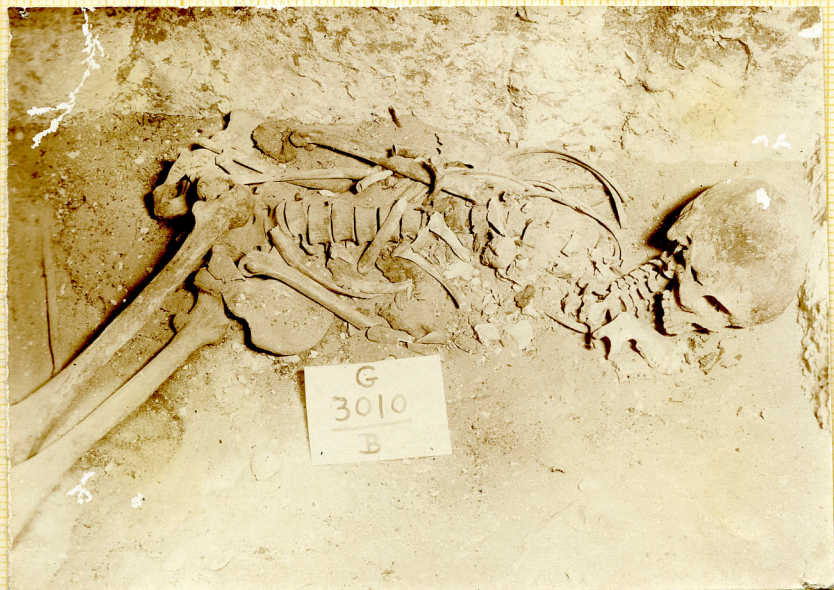
Window on east sloping
up \rightarrow E 14 m x 8 h. in masonry

26 May 76

G
3010
B



4458



4458

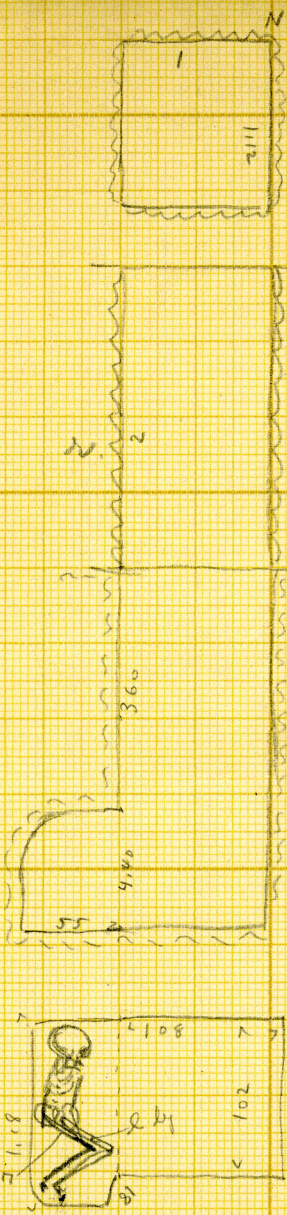




G
3010

B

G 3010
B



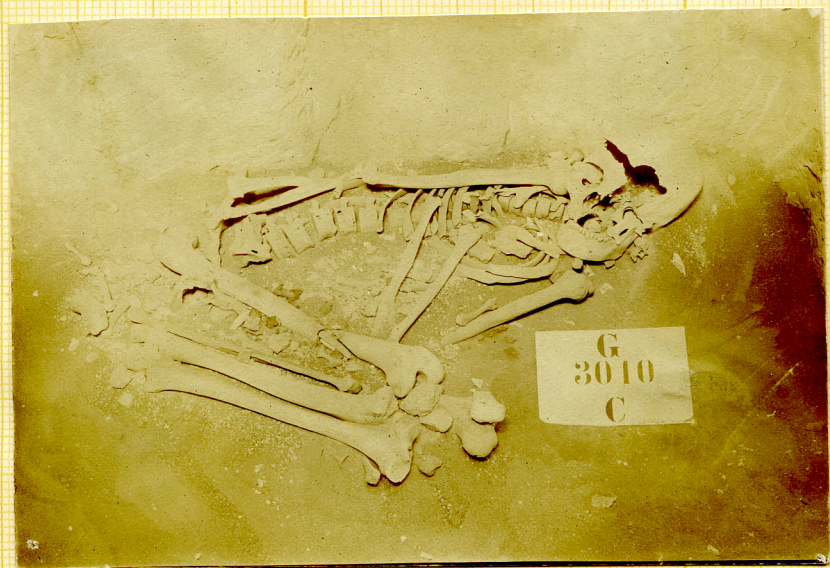
Ch. at W
 Burial
 adult ♀ teeth ^{sound}
 contractor on l side
 head N, face E
 knees up somewhat.
 both arms down
 to pelvis
 Large, strong bony
 framework -
 no doubt as to sex

In bottom of shaft
 3 large rough
 blocks -
 (burn door?)

26 May '16



467



468

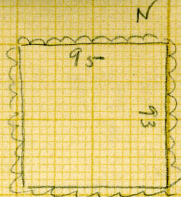


6
2010
6



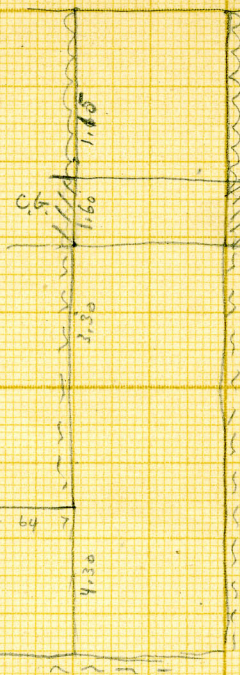
G
3010
C

G 3010
C



ch. at W
 Burial
 adult ♀
 contracts on
 l side
 head N
 face E

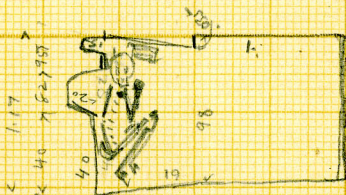
allotted (y)



heels to hips
 knees opposite
 breast.
 rt arm down
 over hips
 left hand
 bent up to
 breast.
 At head a
 small rough
 stone -



In bottom of
 shaft a number
 of rough, small
 blocks.



26 May 16
C

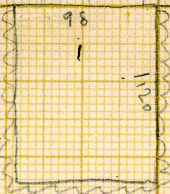
G 3010

D

N.

ch. at E

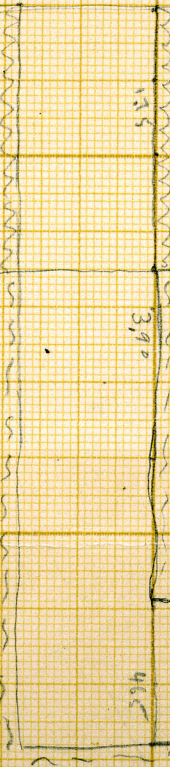
98



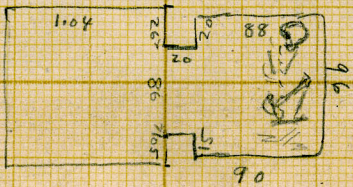
Disturbed
burial -
adult ♀
head N
for a E (as body
shows through
skull
now
looks W)

1.15

3.90



1.10
3.90
1.10



26 May

E. side for ⁽³⁰⁾ many
squares above rock

3011:

Is debris filled, rubble with stepped facing. Original offering room had included the latter ~~had included the last~~ ~~last~~ shaft B., the division wall of which blocked up the niche. This division wall rested on rough rubble filling in building the northern end of the offering room. The south end of 3012 was used as one jamb of the door. The mortar used is pink. This mastaba is built against the mud brick mastaba 3021.

93011

Offering chamber has been
rebuilt.

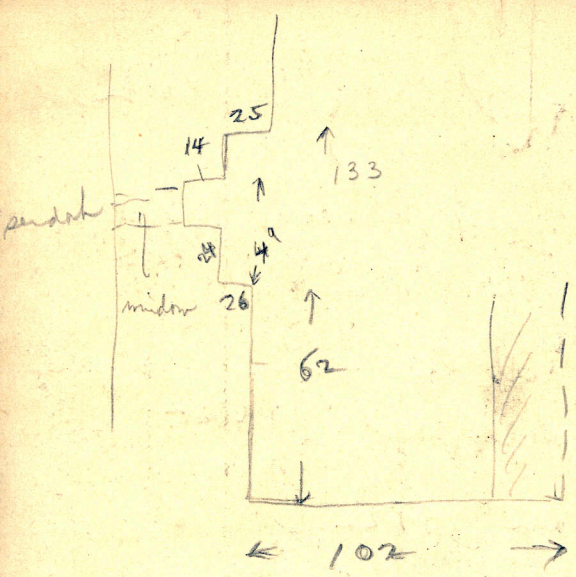
Window just under lintel
of niche opening into serdab

Mastaba rubble filling faces
nich set well squared last.

3041 later than 1302

See C 21
22 for details of serdab roof.

Serdab sealed with 2 large blocks
of last. Empty





411

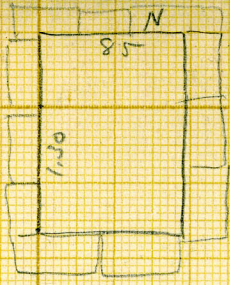


5
3011

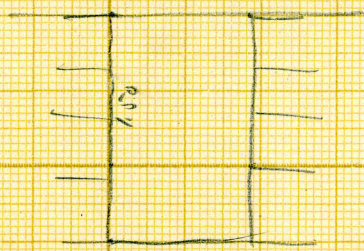




G 3011
Sudab.



Window
E side

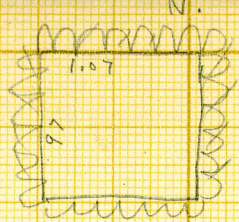


sealed roof
2 large slats

25 May '68

G 3011
A

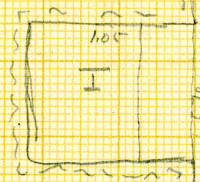
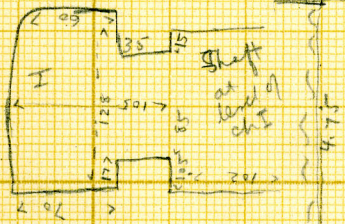
(M)



I ch at W
II ch at E

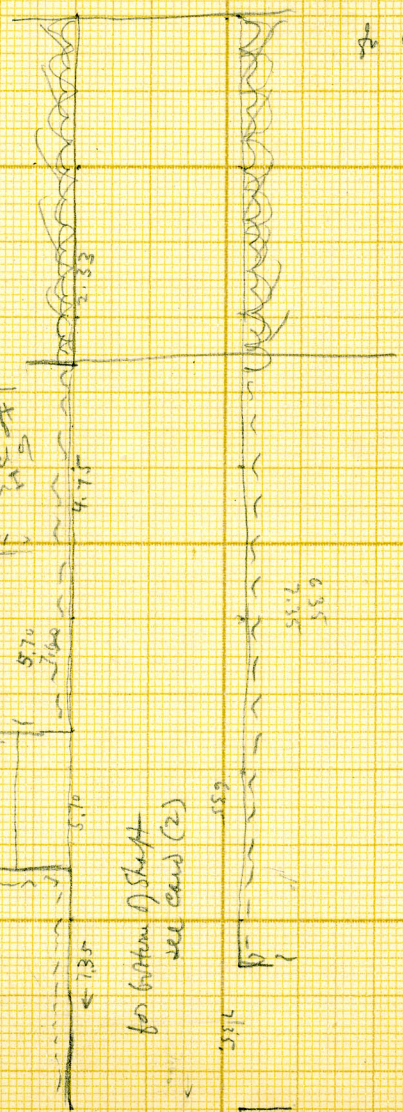
I ch at W,
empt.

II ch II
see card
(2)



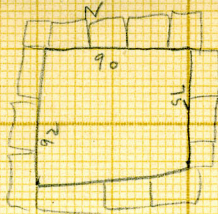
for bottom of Shaft
see card (2)

25 May 6



G 3011

$$B = Y$$



ch at E

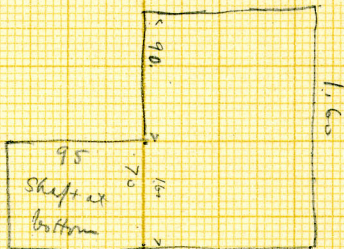
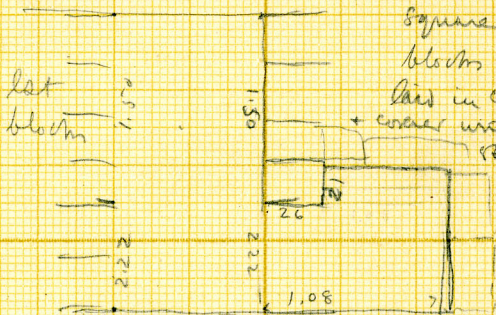
In ch -

only a broken
skull & skull.

ch. bridge of
square

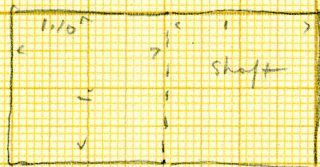
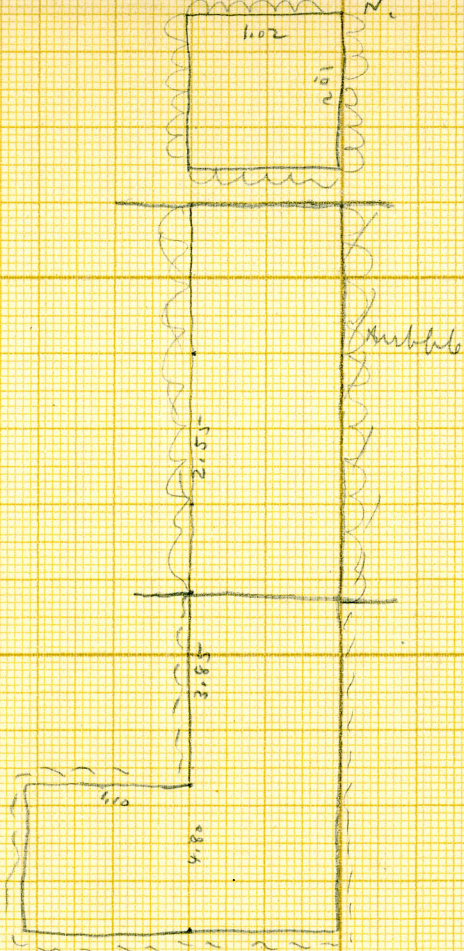
blocks of lot

laid in cement
+ corner with pinkish
stone



G 3011
C

. ch at w

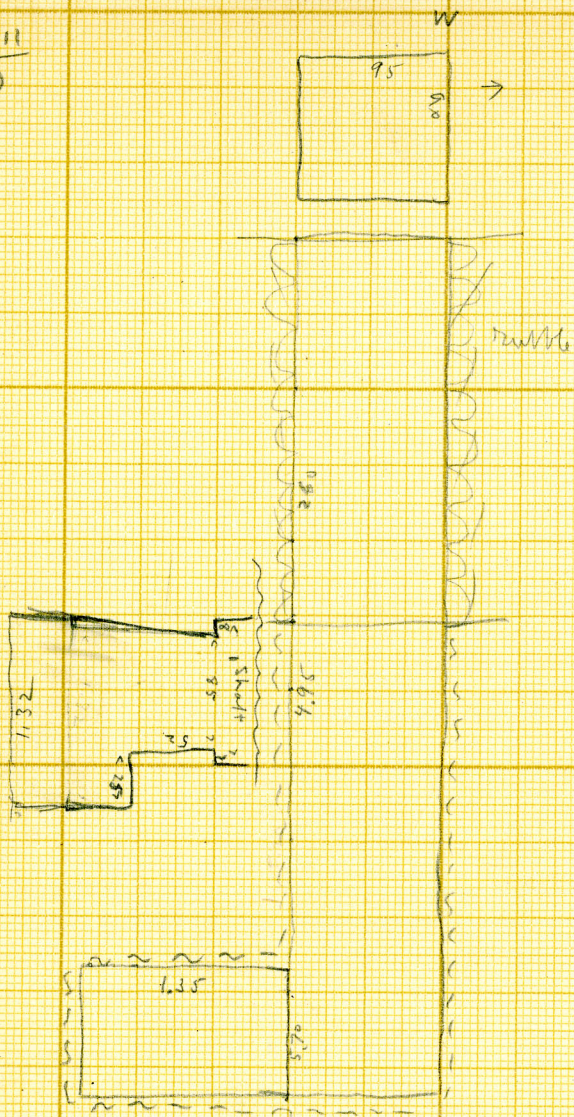


25 M 1/2

G 3011
D

eh at S

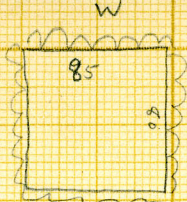
Empty



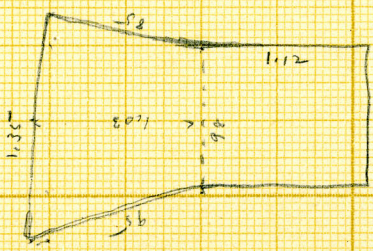
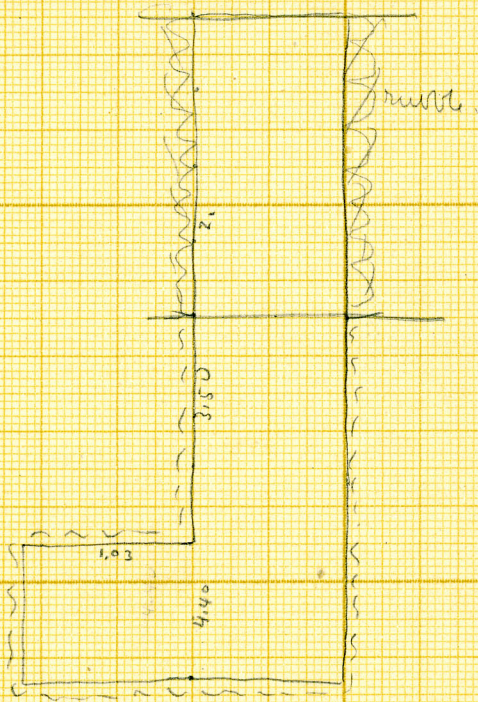
25 May 6

G 3011
E

chart S

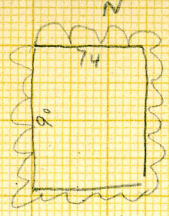


1.35
85
95



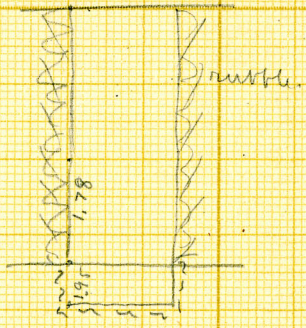
25 M 16

G $\frac{30.11}{F}$



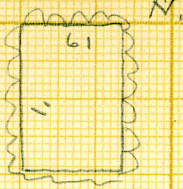
Sheet +

Embroidery

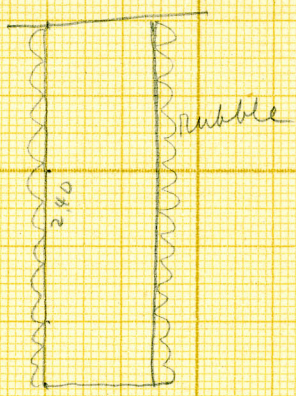


25 M 16
g

G 3011
G



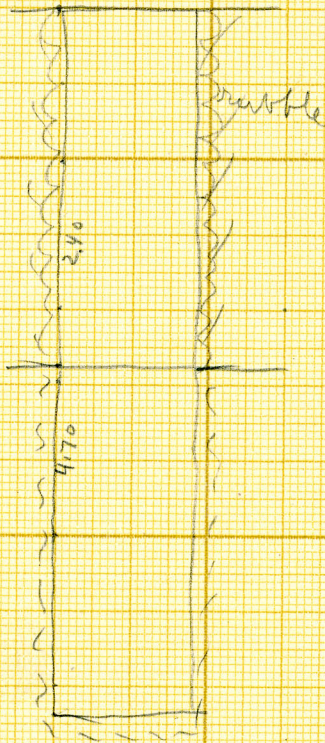
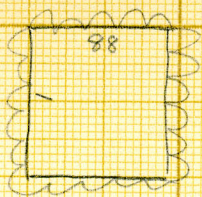
Shaft



25M₂16

G 3011
H

Shaft



25M³/₆

G 3011

Location

N

X C. b.

|||||

cat

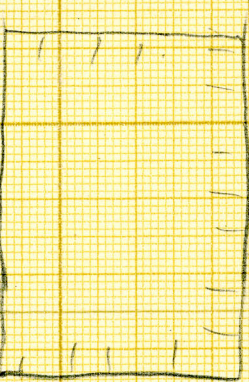
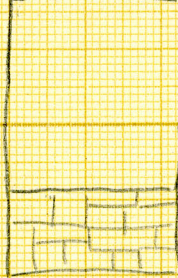
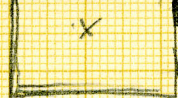
||| est |||

cat
with
mud

est

3011

X



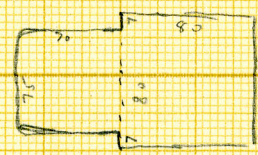
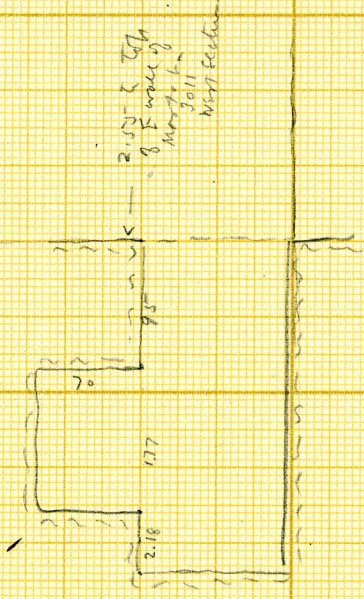
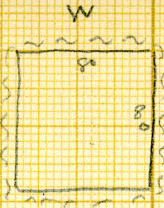
B

2 20'16

$\frac{G}{X}$ $\frac{3011}{X}$

eh at 5

not on
plan



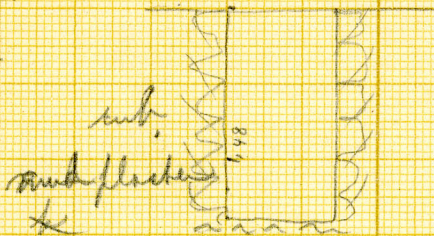
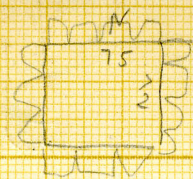
25.4.16

3012:

Debris filled, stepped facing. A was a serdab
B. C. and D. the shafts.

G 3012
B

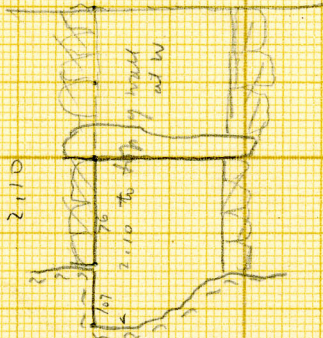
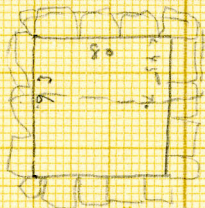
massive
rubble filled
roughly squared
lat. facing.



Shops -

W. half
with roof
block in
place, 45
from W side
steps to E edge
con block.

G 3012
A

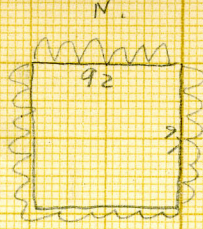


↘ search

25 M 10

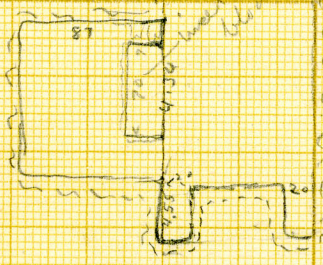
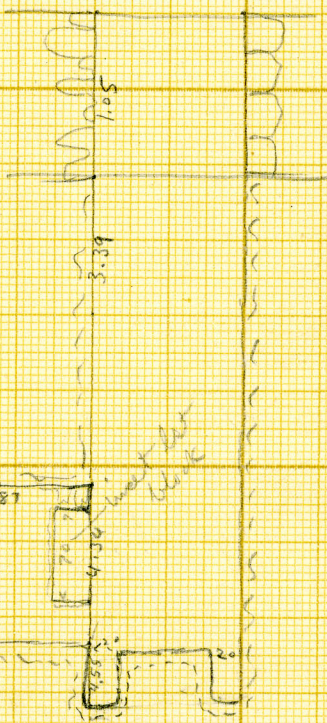
coursed feed debris
filled

G3012
C



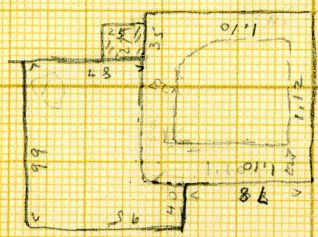
ch at W.

In face of door
jamb, N side -
a rect. block
has been inserted
in a cutting,
to bring jamb
flush with face
of shaft
center of
sh. bottom of shaft
a projection of
native rock
needs removal,
though channel
ca 20 wide cut
all round it -
top of projection
level with floor
of ch.



Burial
(disturbed)

adult male -
bone, including
skull, in a heap
in SW corner.
Door slabs, one in
ch, 3 in shaft.



25M/16

S
3012
C



A457



A472



3912



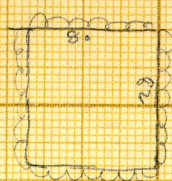
A black and white photograph of an archaeological site. In the center-left, there is a pile of skeletal remains, including a large, rounded skull and several long, thin bones. To the right of the pile is a small, rectangular label with the text "G 3012 C" printed on it. The background is a rough, textured surface, possibly a rock wall or a dirt floor.

G
3012
C

G 3012
D

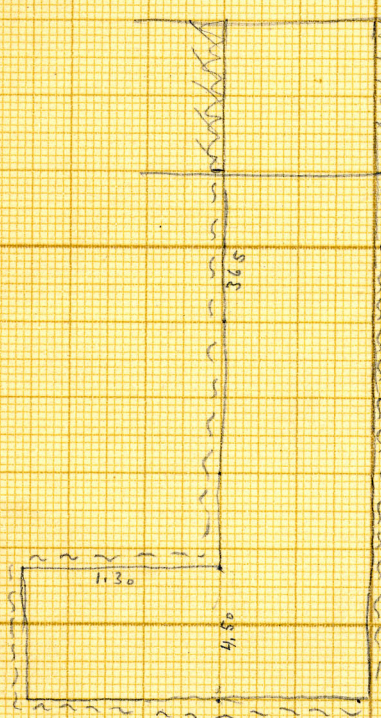
N

Ch at W

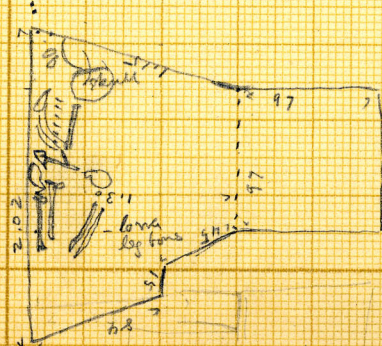


2 Row like square
blocks est. side
in bottom of
door; the same
blocks from mill
orig. blocking door
now in
bottom of shaft.

rough stone
masonry
↓ masonry



Burial -
(disturbed)
adult ♀
on l side,
head N.



25 M/6

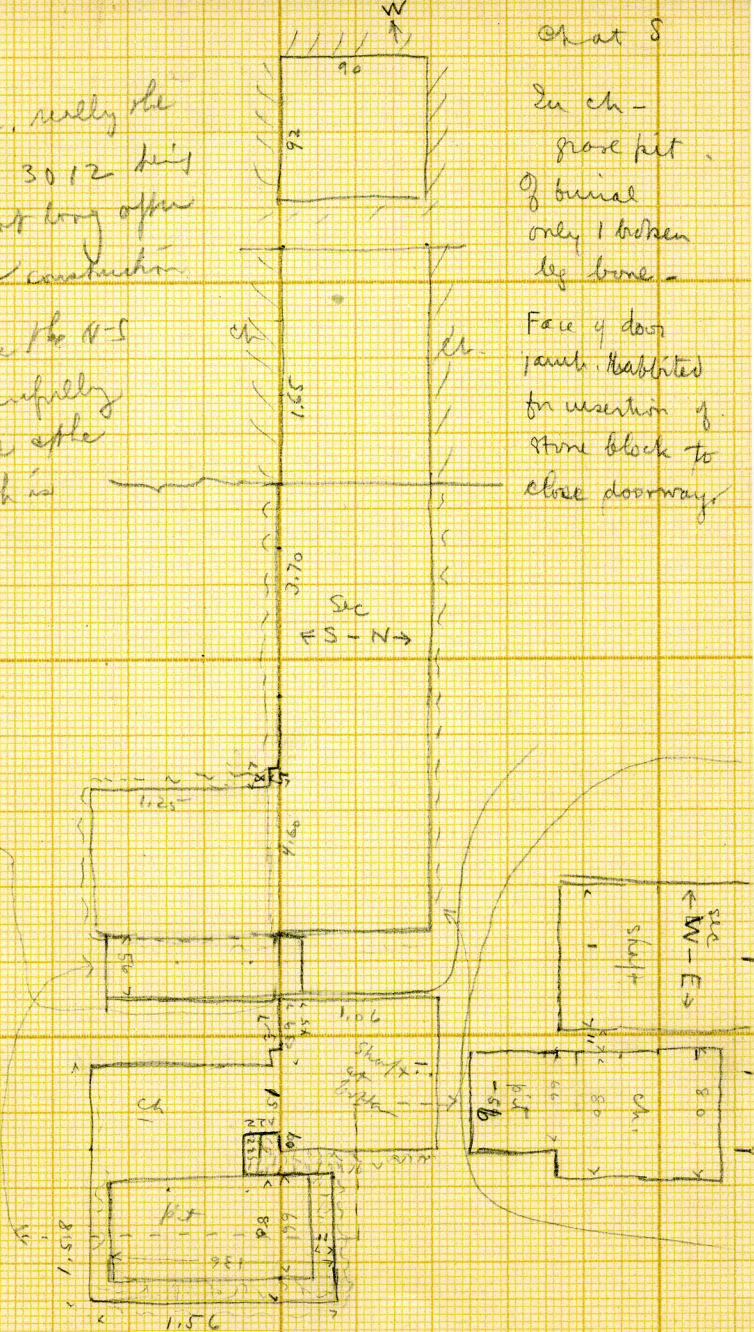
3013:

Debris filled mastaba with stepped facing:
with east face roughly smoothed to a batter. In the upper levels
of 3013 is a well built wall which may be the remains of a surface
burial chamber. Against the northern end of 301+3 B. shaft was added
and the facing wall lined up with the earlier walls.

G 3013
A

marked. really the
N. part of 3012 has
added most long after
original construction
of 3012 as the N-S
line is carefully
maintained & the
work of both is
similar

at S
In ch -
grave pit
of burial
only 1 broken
leg bone -
Face of door
jamb. habilitated
for insertion of
stone block to
close doorway.



23 M/6

C. b. 36 x 18 x 11

G
3013
A



4462



4479



3013
A

G
3013
A

9
3013
B



A 456



A 480



G
3013
B

A black and white photograph of a geological rock face. The rock shows distinct horizontal layering or bedding. A small, rectangular white scale marker is placed against the rock face in the center-right area. The marker contains the text 'G', '3013', and 'B' stacked vertically. The rock surface is textured and appears to be part of an excavation or a natural outcrop.

G
3013
B

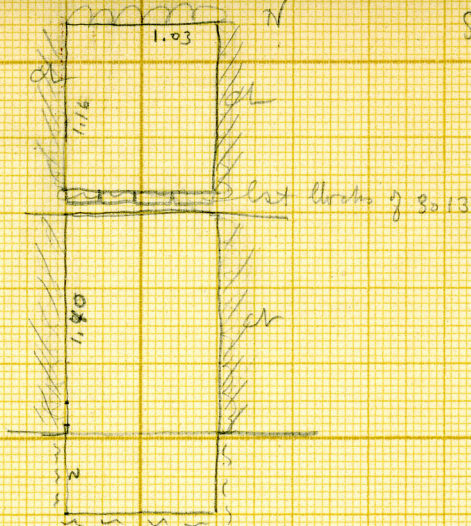
3014:

Consists of two shafts A. and B, lined with mud brick and rubble and with a stepped facing wall which on the east lines up with the row of mastabas. On the west the casing wall stands beyond the western face of the others. 3015

G 3014
A

Rubble filled
lst. facing
stepped
center phase

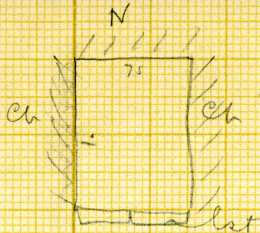
3013



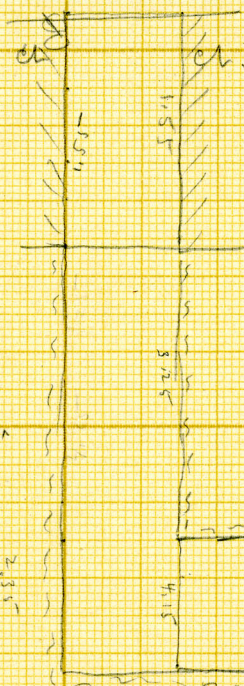
Shaft

23 May 6

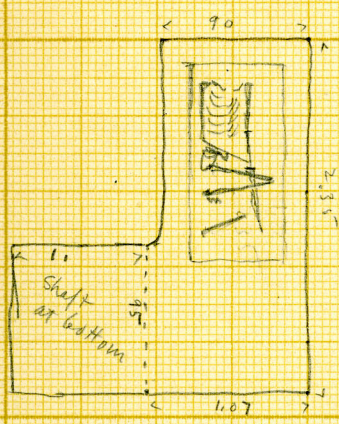
G 3014
B



ch at E
Abundant
remains of
wooden coffin
(wood ca 2 cm thick)



Burial shaft
♂(?) skull
missing; trunk
slightly on l side
head N,
face E
knees up to
hips; l arm
straight,
rt arm crossed
over abdomen -
(Trunk of body
nearly on back)
Box ca 1.30 x .55
Bones more or
less disturbed



23M 16

E. wall cb or p. cb
at top 2 or rough rubble
W + N. mixed cb & rubble
~~rubble~~^{mud} below. sub. stone

parts lining built first, the
facing covered ashlar
space between filled mud
beds & rub.

3015;

Irregular mastaba debris filled, stepped casing.
The north end of the offering room of 3014 is built against the brick
work of 3003 and the east wall of the offering room which served for
the whole row is built into the face of 3002.

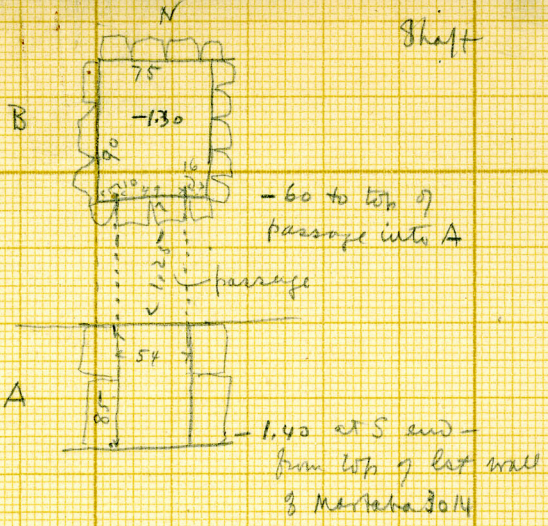
G 3015

A + B

Shelf

Rubble filled
lat consist
facing

later than 3014
& 3024(?)



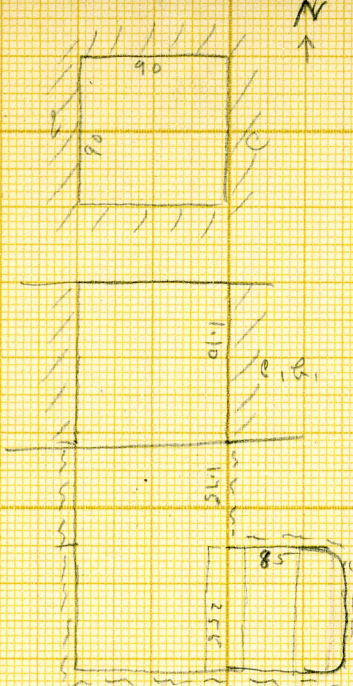
In A a few
bones (adult)
apparently
dropped out
from passage

In roof at S end
level slab G 35
= C. 265

22 May 66

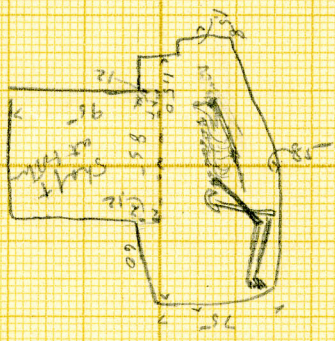
Belmonte in Eface
is unfringed & part
of an earlier period,

G 3015
B



Ch at E

Burial, adult ♂(?)
 Skull missing -
 extended on l
 side, head N
 face E, on
 bed of fine sand -
 knees slightly
 drawn up -
 arms down
 toward knees -
 Bur originally
 blocked by slab
 of lst -



22 M/16
day

rubble below c b. above

3020:

Is a debris filled with stepped facing the lining of the shaft being brick and rubble.

G. 3020

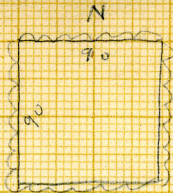
Mastaba rubble filling
found with roughly squared
est. blocks.

later than 3011.
earlier

found debris near south
fragment of inscribed est. slab
with part of acastouche.

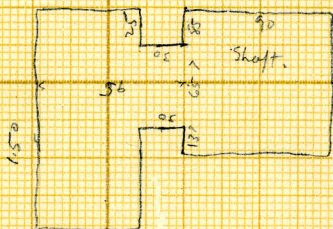
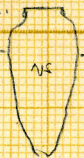
G 16-17

G 3020
A

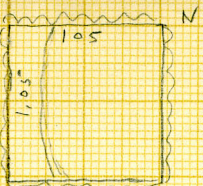


Recess at W
Empty -
in debris

1 res. was jar
ca 27 h.
4 x circ



G 3020
B



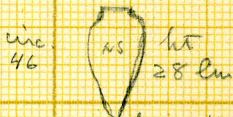
Shaft
ch et E

In bottom of shaft -
along W side ledge
of shell near exit away
40 h + from 25 to 30 in.



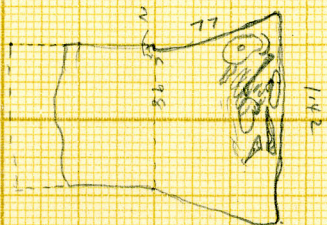
Burial - adult ♀
teeth, including wisdom
teeth, all fine &
sound. Bones in
a heap at N end
of ch.

In debris of ch.
1 red worm / ac



in jar let. chips

Under bones, bed
of let chips

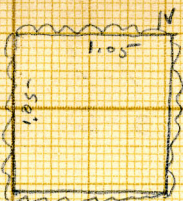


27 M. 16
8

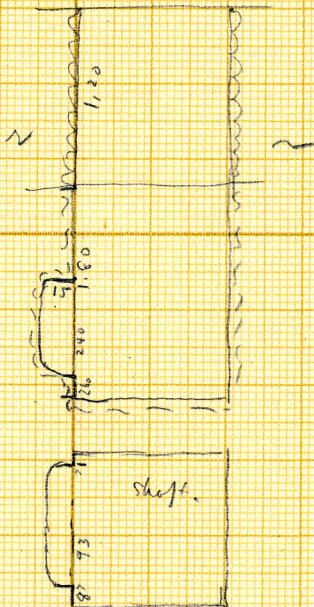
E top repaired c.b. $40 \times 21 \times 15$
also edge B-D

frag shells No 16-17, 18 C326/
frag 16 (lower left) found in space
between 3010 + 3020
frag 17 (lower right) found in debris
over 3020 near S end.
frag 18 (top) found in debris of 3020 B.

G 3020
C



ch. begun
at W, but never
completed.



1.10
2.60

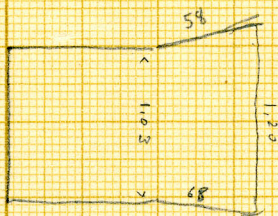
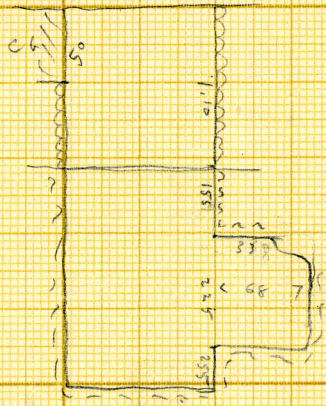
85

27 N 1/6
8

G 3020
D

Recess at E

cutting



x1. Bowl with life line
wall.

10m d.
(G 20)

E. edge m. *platen* middle
S edge mt, also top c. b. (see B)
W + N. c. b. *platen*

305
420
A



x1. bowl with Rep

low. name

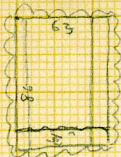
No 20



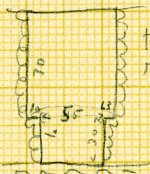
G 3020
E

N

Pit shaft +



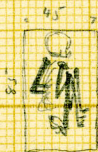
approx 5 ins of
grit in bottom
of shaft - a
rough stone
19 in dia



plastered
inside

Burial

adult ♀
contracted on
l side
head N
face E



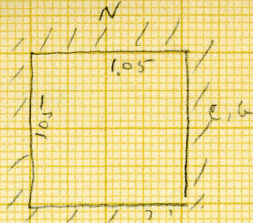
knees close up to
breast

l arm bent at rt LS
under body
rt arm y with hand
at knees

27 May 16

G 3020

F

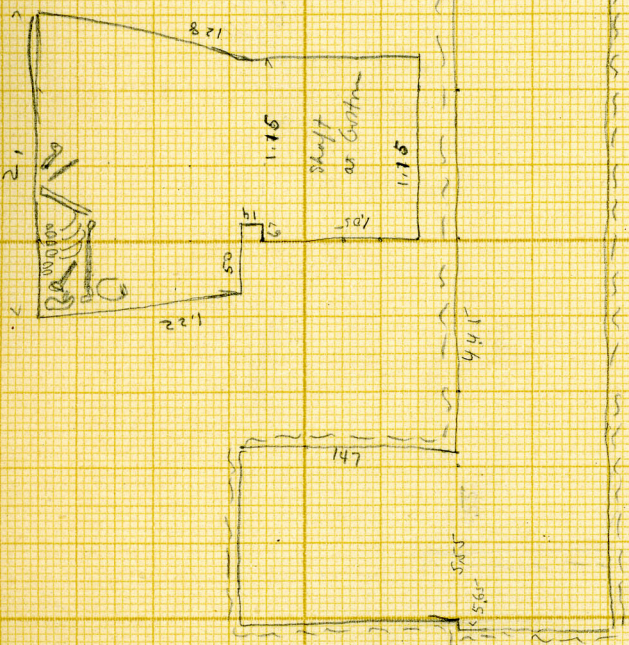


ch at W

Burial
(disturbed)
adult ♂
bones in a
heap in SW
corner.

Head orig.
N (as position
of stertebrae
shows)

(killed a small
engid scorpion
in this chamber)

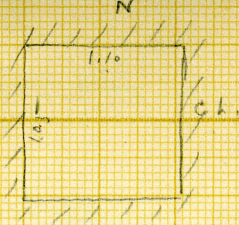


27M16

c. b. 26 x 13 x 2

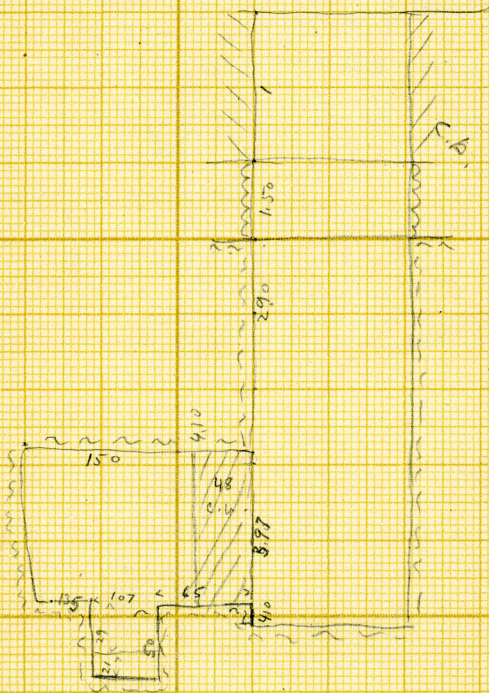
Wall between F G - c. b. small
" " D-F c. b. small
large on top.

G 3020
G

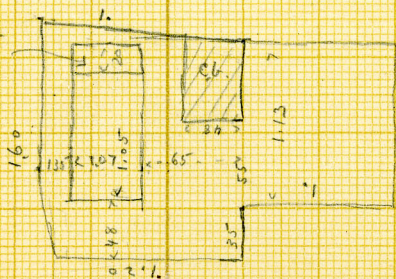


Ch. at W
Shaft.

Box of chamber
originally
cut full width
of shaft; then
narrowed by
having a pier (a
filling of mud
bricks, plastered,
at N side, as
indicated below.



At N end of pit
a small ledge
(as headrest?)
20 wide
21 high.



-27M/6

Lower part all sides scabb, S. + W
rubble.

E side rubble badly laid
small c. b. above.

S. side all c. b.

W. all c. b. plastered. / course
rubble above.

N side rubble below c. b. above.

at top 2 c. face c. b.

9
3020
9



4443



4444



G
3020
G

G.
3020
G.



9
3020
9

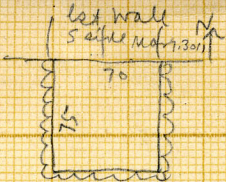


A46

A465

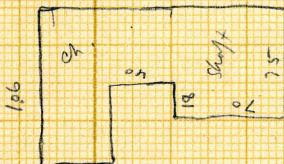
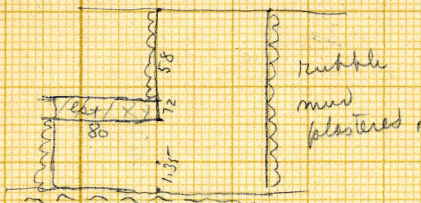
A black and white photograph of a geological rock face. The rock surface is highly textured with numerous small, parallel, diagonal striations or grooves, characteristic of glacial abrasion. A prominent vertical crack runs down the center of the image. A small, white rectangular label is placed on the rock face, containing the text 'G 3020 G'. The lighting is dramatic, highlighting the textures and shadows of the rock.

G 3020
H



ch at W

Empty



27 N₁ 16

5
3020
H



4448



G
3020
II

3020

x

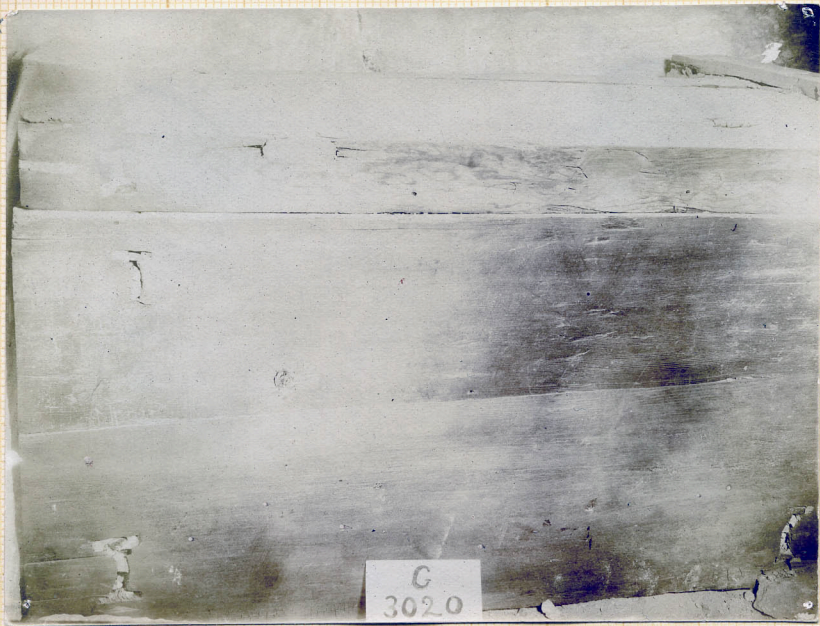


A439

C
302.0
X

G
3020

X

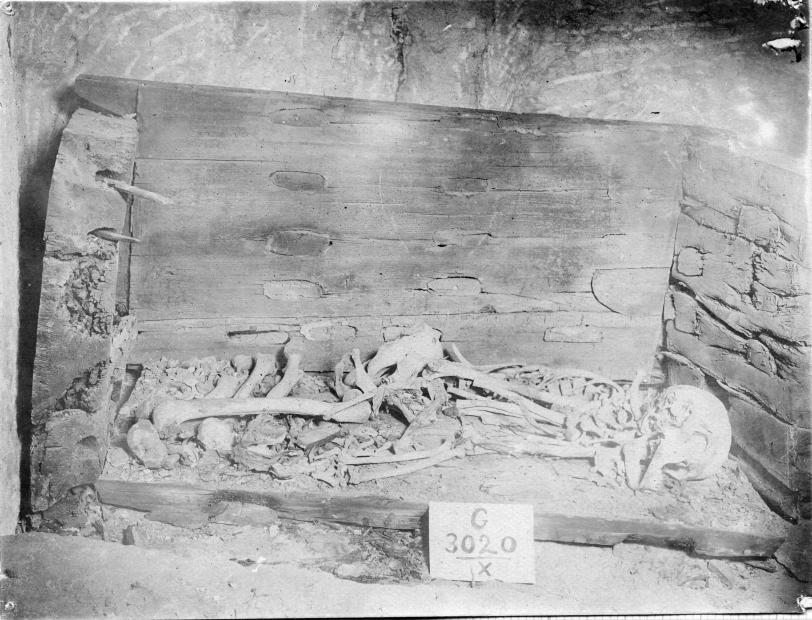


A442



A471

C
3020



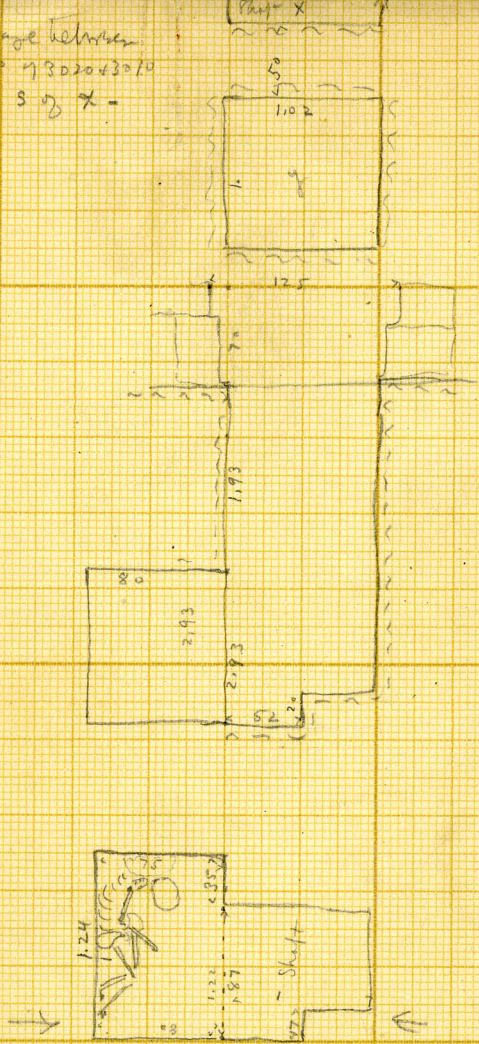
G
3020
X

$\frac{G}{Y}$ in passage between
 N end of 3020 + 3010
 +, just S of X -

3020
 Y

chat W.

Disturbed burial
 adult elderly
 ♀ (teeth much worn)
 on l side,
 head N, feet
 face E, head
 on resting on a
 stone.



25 M/16

3021:

Debris filled mud casing. The bricks are brown
32X15X11. The large double niche has a stone slab as an offering
ledge. The builder of 3021 recessed the stone facing of his mastaba
so as to leave the offering room for 3021.

G 3021

mastata c.h.

8257 430

same

$$N = 83025$$

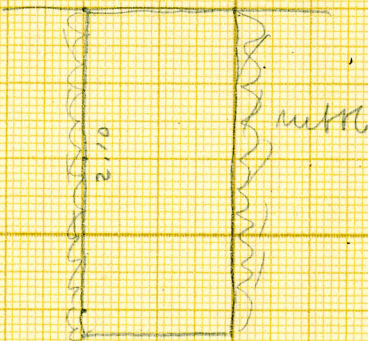
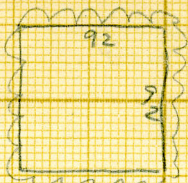
$$E = \text{do}$$

$$Ch = 15 \frac{1}{2} \times \frac{32}{31} \times 10$$

In mill along edge next #3011 = $15 \times 32 \times 10$

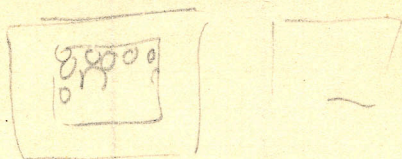
earlier than 3011 .

G 3021
A

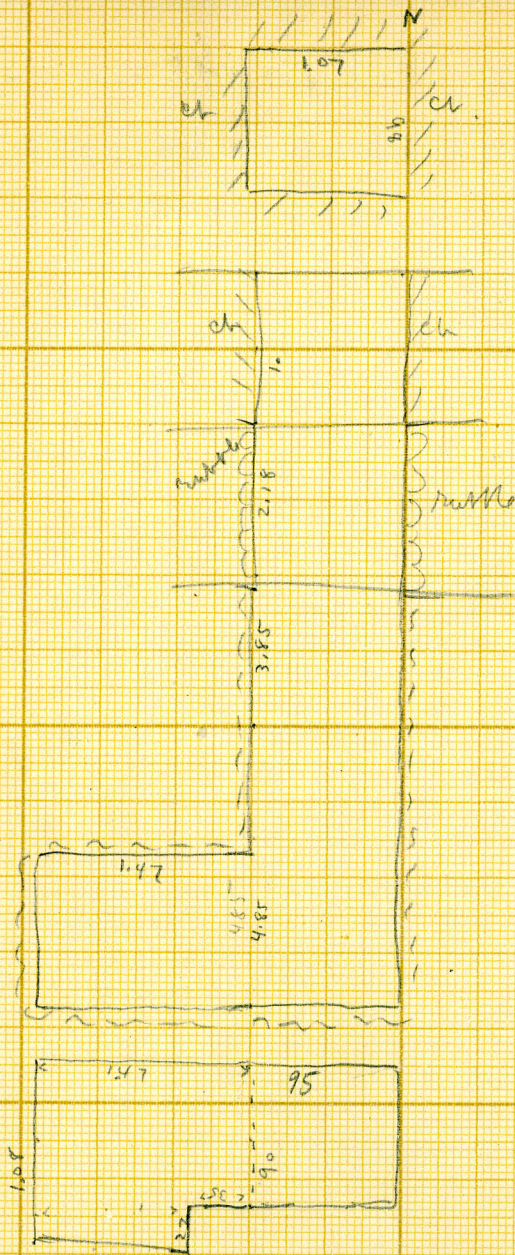


25/11/6

Mustaba rubble core
c. h. freed 31 x 15 x 10



G 3021
B



ch at W

In ch -
abundant
remains of
shattered
wooden
coffin -
+ a few
broken bones
of adult
burial.

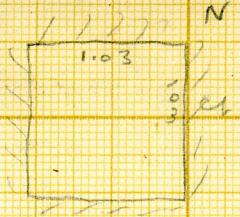
25 M 66

Rubble above rock. c. h. (5c)
small bricks as in form
3 courses above of layer c. h.
36 x 19 x 11.5

440
355
85

G 3021
C

Ch at W



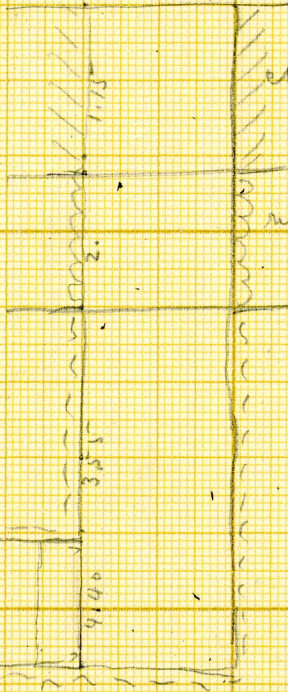
Burial
adult ♂

(disturbed
slightly)

Trunk almost
on back,

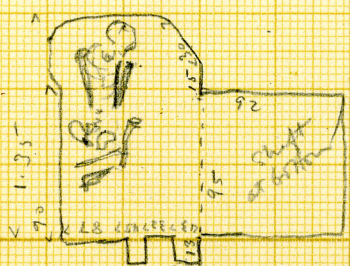
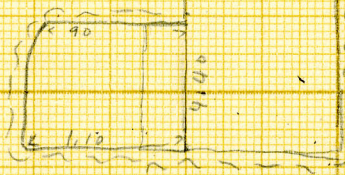
head N-

face org. appar-
ently up, skull
now fallen to
E.



middle

Arms up to
face (seemingly
at firearm some)
leg bones broken
but apparently
up at l. side



25 May

G
3021
C



A 479



A 477



3021

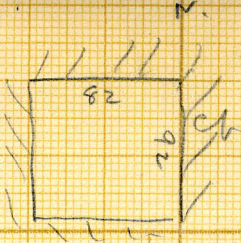
G
3021
C



G 3021

D

(2nd plan?)



Color at W

built of rough stones

Burial
adult female

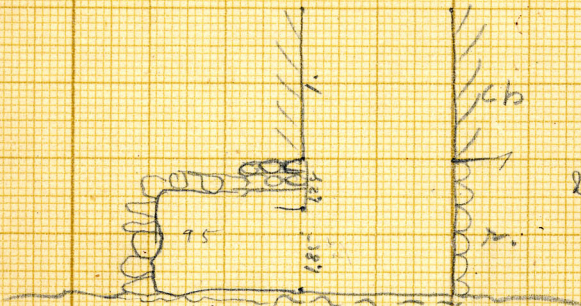
on l side

head N

face E

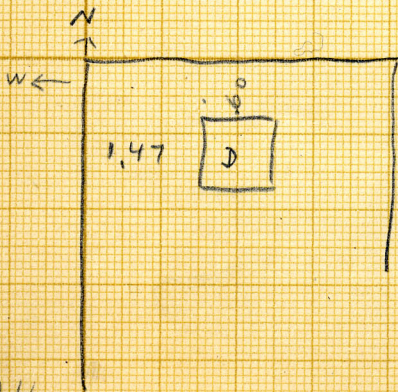
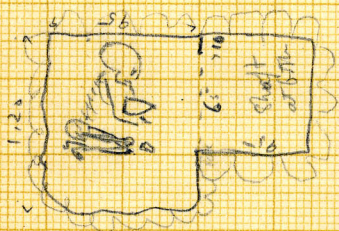
heels up to
hips -

2 in front of
chest 1 jar



at knee small

pot



25 May 66

3021
D



A445



A483

G
3021
D