

3000:

Mastaba including A. B. C. rubble and debris filled with a rubble retaining wall, mud plastered. This was faced and had stepped ashlar casing in which was a large block on the east face with a single nich. This is opposite A. shaft. At the northern end was later added a brick addition with D. and E., one single niche opposite E and probably a double one nearly opposite D. The space E was probably intended to enclose two shafts to only E at the east was sunk. The evidence of a division wall was a few bricks. ~~XXXXXXXXXX~~
~~XXXXXXXXXXXX~~ ~~XXXXXXXXXXXX~~ The western face had been restored with rough rubble wall at the time when a new offering chamber was built between it and 3011. This rubble wal rests on layers of debris of sand and limestone chips which had filled the space E. when the rubble wall was built. The line of this debris slopes up toward the east and rested on a sand stratum in E.

G 3000

Massaba rough lst. facing

The Mend with shifts D & E a later addition(?)
of c. b. built over lowest course of last blocks
of original 3000. + having thereby become
extent by it.

Cb. at Mend. = $13 \times 26\frac{1}{2} \times 8 +$

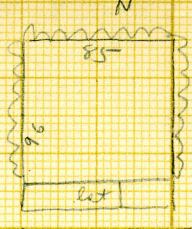
walls of shift D = $13 \times 26 \times 9$

3000 seems to be later than 3010 as
offering room of 3010 cuts into 3000

In shop A debris a
number of fragments of rough
pottery ware.

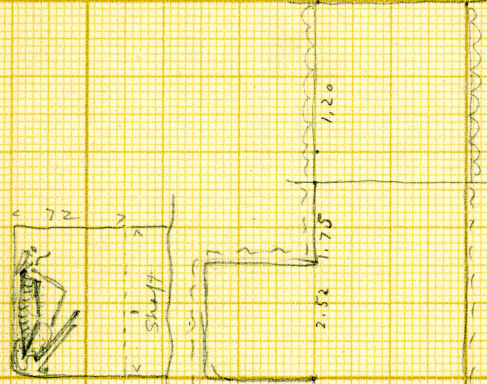
In shell between 3000 at 3010
fragments of pottery plates
large number of ceremonial jars.

G 3020
A

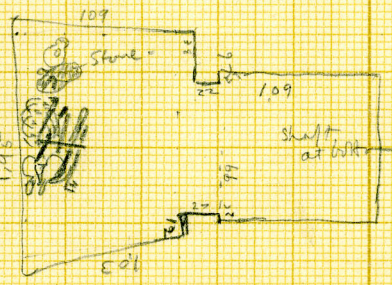
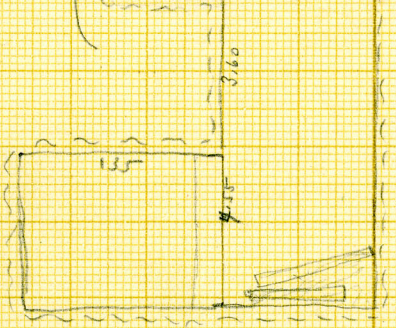


2 ch at W
I - a recess -
Burial - Young person,
skull missing -
on l side
head N, face E
heels up to hips,
knees up in front of
chest
l arm down
between legs + body,
r hand on pelvis
r leg missing

257
571
797



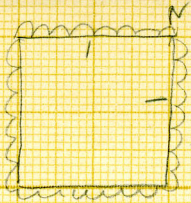
II Burial
adult ♂
contracted on l side
head N, face E
(orig). head on
stone, skull rolled
off to N. Teeth worn.
Knees up to chest,
heels to hips, arms
clapping legs,
lower part of trunk
(i.e. hips + pelvis
fallen front down)
l. thigh bone, under
ribs of r side - due
to the manner in which
thighs collapse.



2 at bottom of shaft
2 door slabs - incl traces
1. 80 x 47 x 6, - probably
worn.
2 55+ x 47 x 6 (broken off at end)

26 M/6

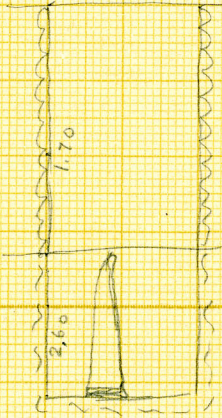
G 3000
B



Shaft

1st slab
standing in
bottom of shaft

ca 90 h. x 90 wide
25 thick at N end.



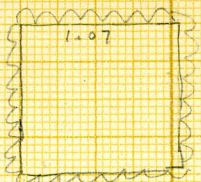
of C 27. for shaft

26 M/6

G 3000
C

W

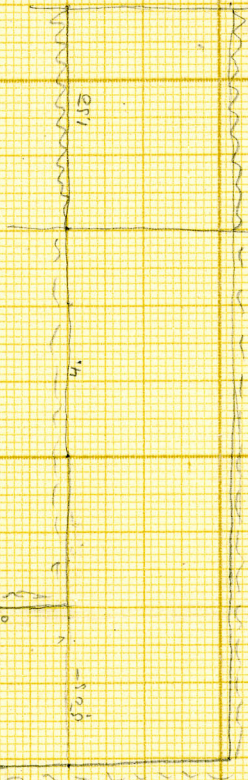
ch at 5



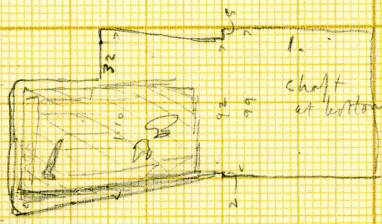
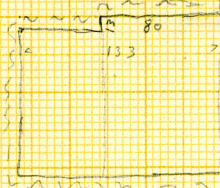
In Bottom of shaft
roughly square
blocks (at least 12)
from blocking up of
ho.

Floors of
Recess in ch.
filled with remains
of wooden box.

Among the frag. of
broken box, two or
three adult bones -
part of a leg bone, &
the two pelvic bones.



1.0
57



26 May 16

3000
C



A 469



A 470



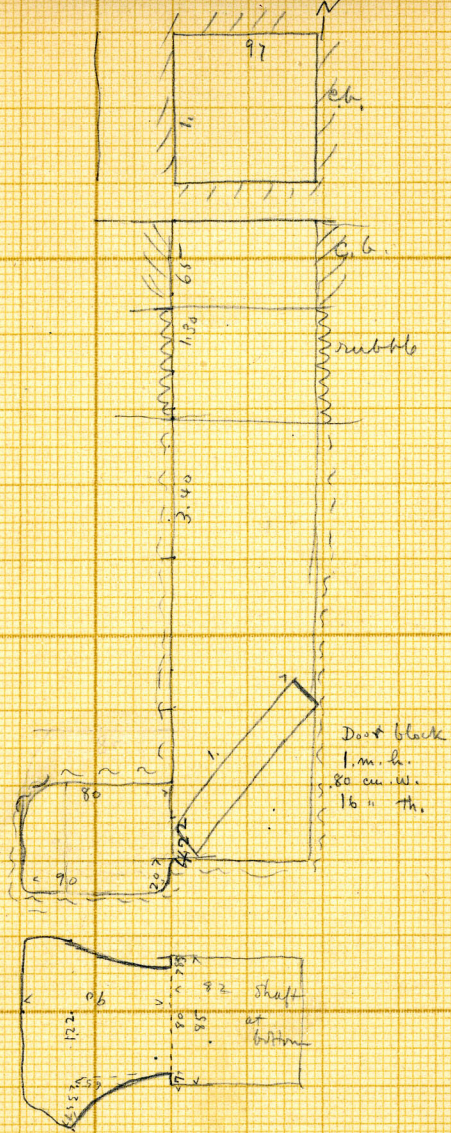
6
:221100
C



G
3000
C

G 3000
D

ch at W
Empty



26 May

3000
D



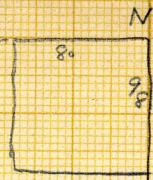
1454



G
3000
D

G 3.00
E

c 338

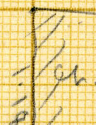


Ch at E
 Burial-
 adult ♀
 bones much
 decayed
 on l side

338



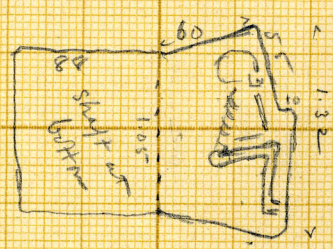
No wall seen
but here



head N
 face E

no other
 shaft
 etc. seen

Roof sealed
 with rubble.



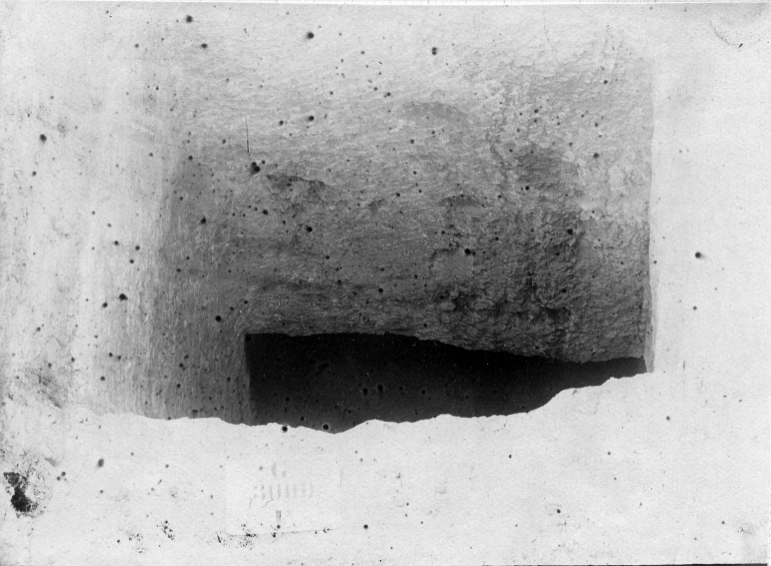
cf. C 28 for shaft.

25 m/b

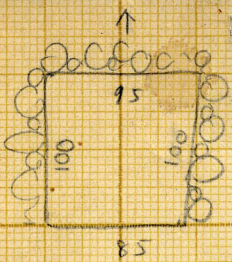
580
1957



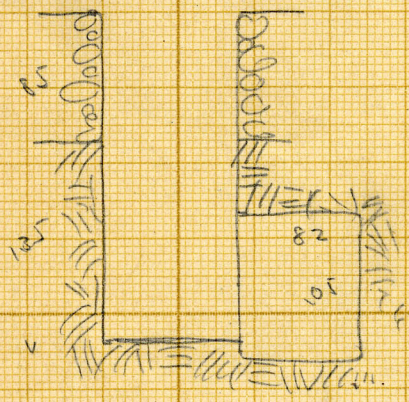
245



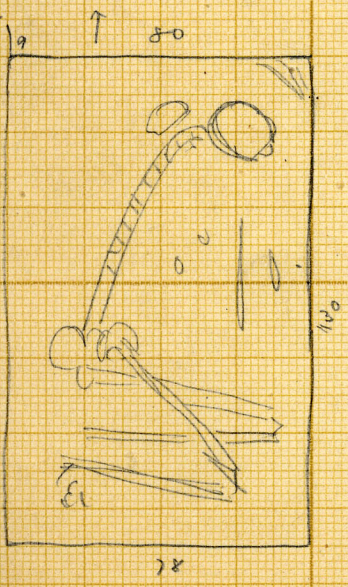
3000
X



shaft ring,
 $100 \times 95 (85)$
 - 135



Chamber at E
 $130 \times 80 - 105$
 floor. 10 below
 bottom of shaft
 Sealed with
 slanting mass
 of rubble.



3000



AIS





Piza 3000 E

→ NE

90

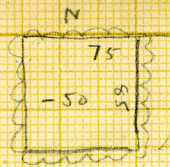
17 Aug 1919

G. 3001:

I s rubble filled and debris with a rubble facing. It had been faced with coarsed ashllar which has been almost entirely stripped off. B. shaft on the east north and south is lined with mud brick aslwell as rubble. A is a serdab apparently. At the northern end there is a rubble addition with D. and E. which was also faced with stepped ashl/ar all round.

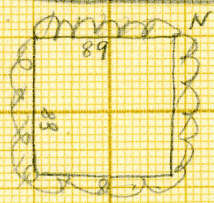
G 3001

A

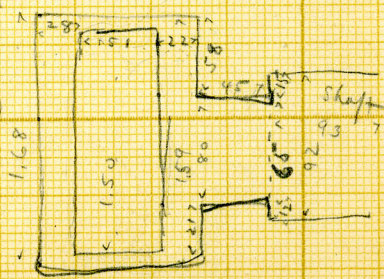
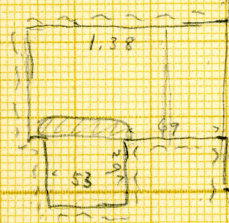


G 3001

B



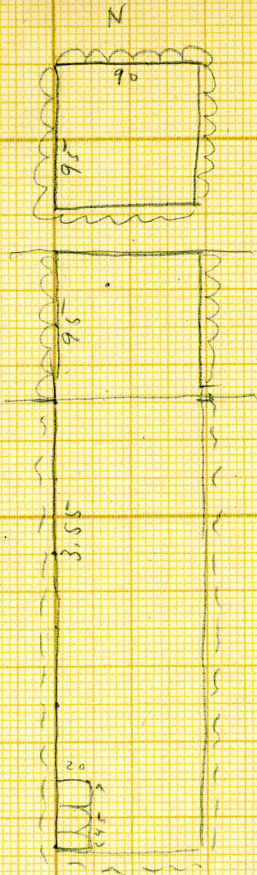
chat w
 with gross part -
 core slab broken
 in 2 pieces +
 tipped back
 against w wall.
 Skull + leg bones
 of adult ♂ ()
 Shank sealed
 with c. b.
 Pit covered with
 3 slabs, 1 thrown
 out
 Contents: Small
 pottery shaver.



23 May 6

79
20
149

G 3001
C



Shaft

Rough

stone
along W
side shaft
at bottom -

In shaft
leg bones only
of adult.

In surface sand one
3001 on unfinished
limestone bowl.

G 15

23 Mil
g

9
3001

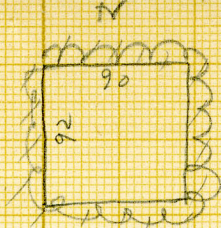


modell für Best.

№ 15



G 3001
 0



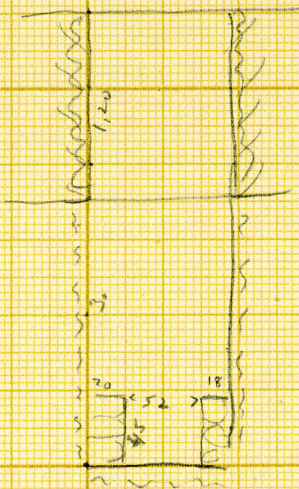
shaft

In bottom
 about
 center of
 on E side

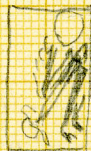
head N
 face
 down-

lines to
 center.

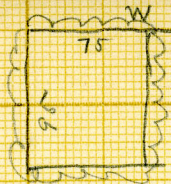
sketch taken



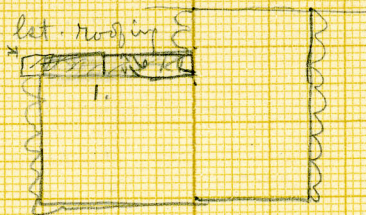
53
 38
 91



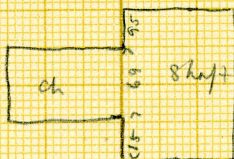
189
G
3001
E



Recess
at S



ch. built
of small
rough stones
stuccoed
with
pinkish
plaster.



Disturbed
adult burial -
skull missing
bones in a heap
at W side ch.

23 May 16

^{supra}
Ch₂ sand about 300 l

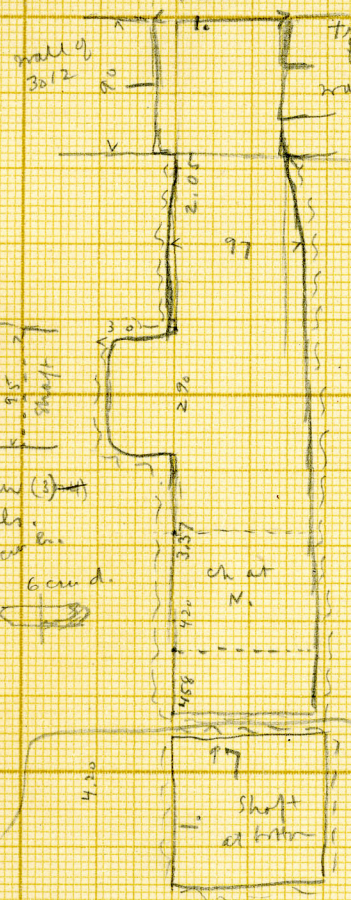
unfinished lot. jar
with some brief inscription.

No. 15

$\frac{G}{X}$ in passage
between
3012 + 3001

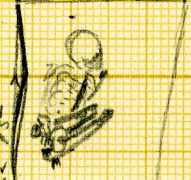
2 chs -
I at W. recess.
II at N.

In II Burial -
adult ♀ contracted

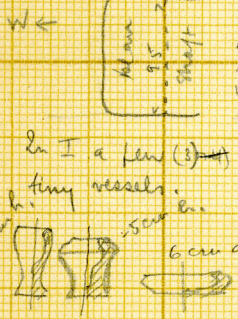


trunk face down (on left side), head N
wall of face E, knees up to
breast, hands to
face, heels to hips.

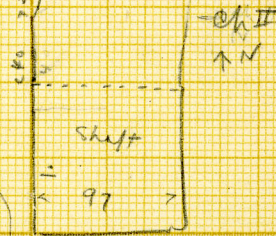
One pelvis + spine, at
shoulders + knees, remains
of cloth. Body lying on
layer of bet chips
< 105 > mixed
with patches
coarse red-bk
mud.
A piece of
charcoal
noted.



with patches
coarse red-bk
mud.
A piece of
charcoal
noted.



In I a few (3) tiny vessels.



3002:is wholly mud brick, 40 X 20 X 15 dark grey. This earlier than 3003. Its north face appearing at the south end of the offering room and in A. of 3003 the rear wall has a debris filling and here the brick facing has been destroyed so as to build the stone facing of the offering room of 3013.

93102

all c. br.

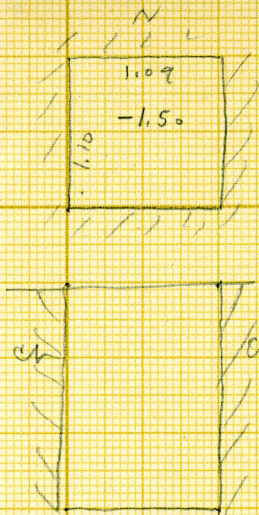
17(18) X 30 X 11

some

— 40 X 14 1/2

E face 17 X 34 X 12

G 3002
B



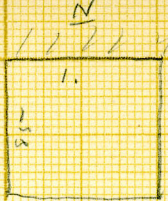
shaft in ch.

du bottom
of shaft.

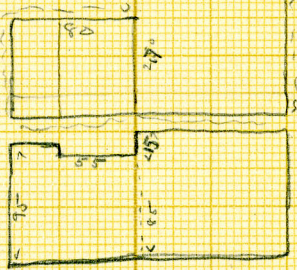
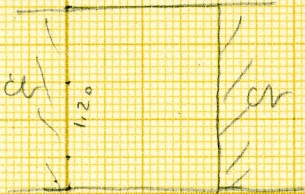
a broken
leg (?)
bone.

solid c.f.

G 3002
C

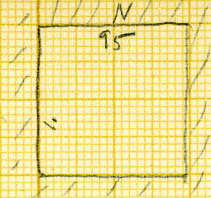


about W
In ch
only leg
bones



70

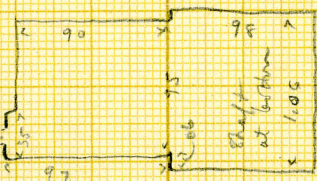
G 3002
D



ch at W

No remains,
small
circular
hole diam 15 d.

in SW corner,
into shaft
of (3013 A)
?



Circular hole into
shaft
(2013 A)
?

shaft
at bottom
1005

23 May 6

93003

all c. h.
better W = 80° 40'

" inner room E = 83° 0'

" " " W = 86° 15'

" outer room W = 88°

C. h. = 20 x 40 x 15 in wall of
(a note about wall) this room
19 x (39 / 40) x 11 / 12

earlier than 3015

" " 3004

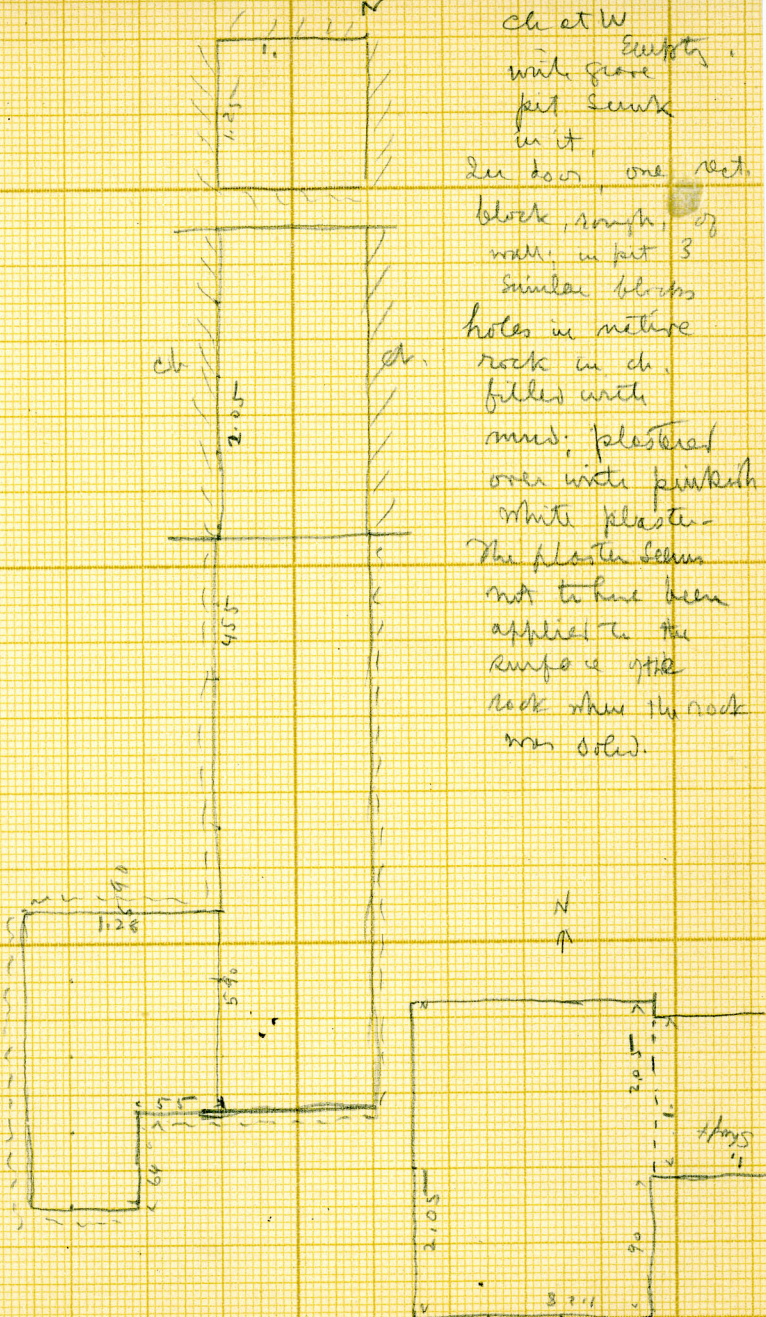
for serial with remains
of figures, cf C 46.

now vaulted + door vaulted

In chamber Z (strong) debris in
remain of double stonework
crumbled at first touch. (Pl. 29)

G 3003

A



22 May 16

Solid mud brick
door to inner chamber
arched

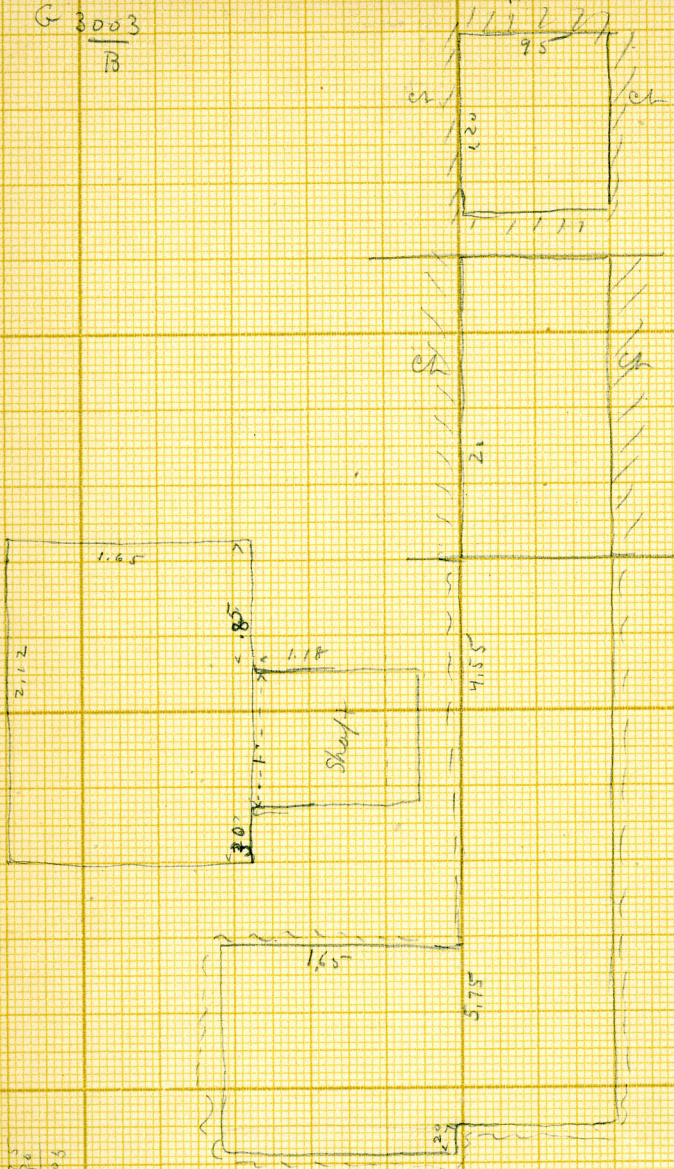
Inner chamber plastered yellow
mortar then coated white stucco.
Sillab plain mud with white
stucco. Niche capped with stone

Outer chamb. yellow mud
plaster. Door to inner ? solid
debris wall



G 3003
B

Chart W



2.0
2.0

23 M. 6

G. 3004:

Is built between the adjoining mastabas. The small bricks in the east face behind the niches are brownish 2⁴ X 12 X 9. These rest on larger dark grey bricks. The bricks in the main structure are dark grey 4 0 X 20 X 16.

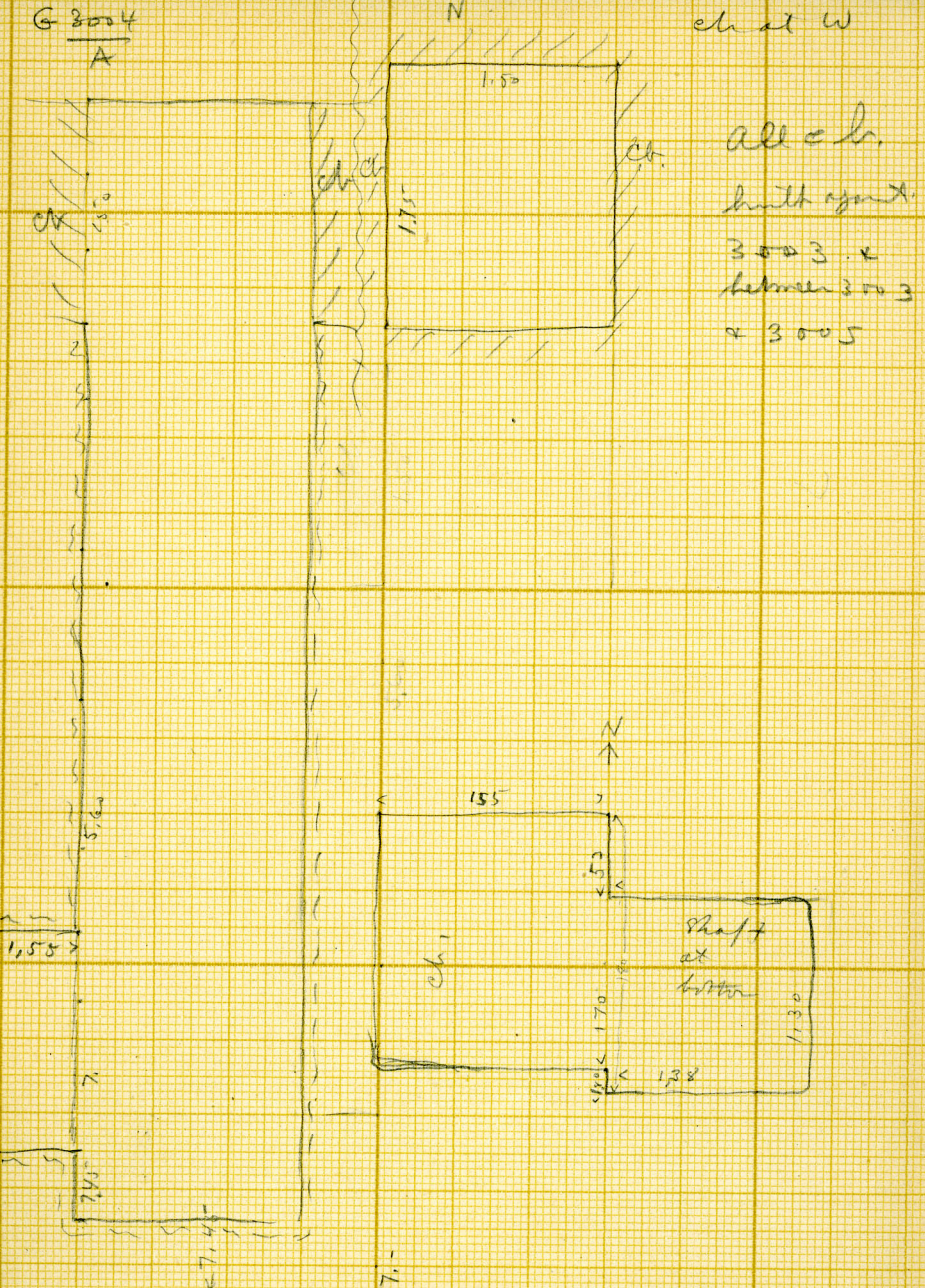
The small bricks removed
from earlier mastaba
is filling

9
3004

all c. b. later than 3003 at least
3003 + 3005
cf C 45 for offering niche
stele & basin in situ
"Khufr"
cf G 608 for stele

G 3004
A

ch at W



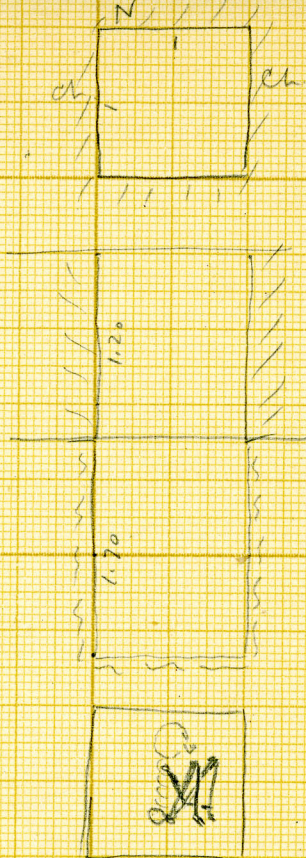
all ch.
 built against
 3003 &
 between 3003
 & 3005

Shaft
 at
 bottom

19 May '60

Solid c b

G 3004
B



Shaft

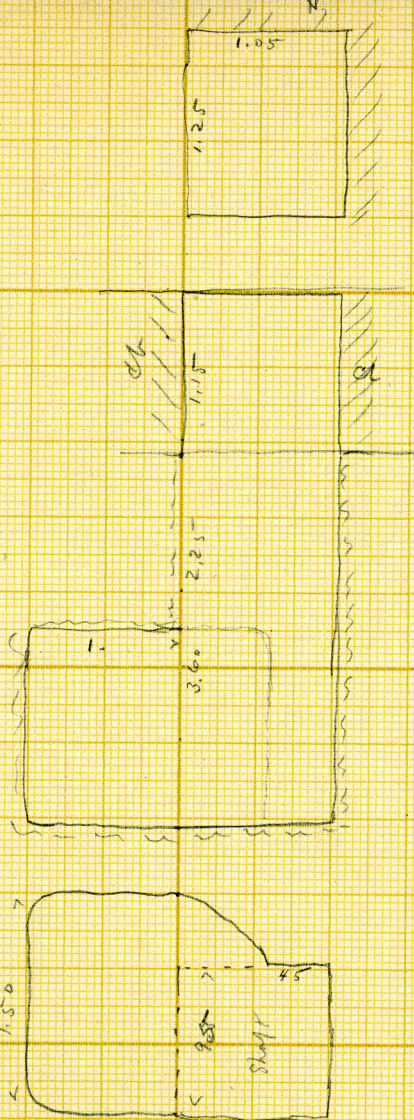
Burial -
adult ♂
in bottom of
shaft,
corner with
rough hbt
blocks -
Contractor on
l side, head
N face E
knees up to
fore; hands
between legs
closing
pelt.

19 May 16

G-3004
C

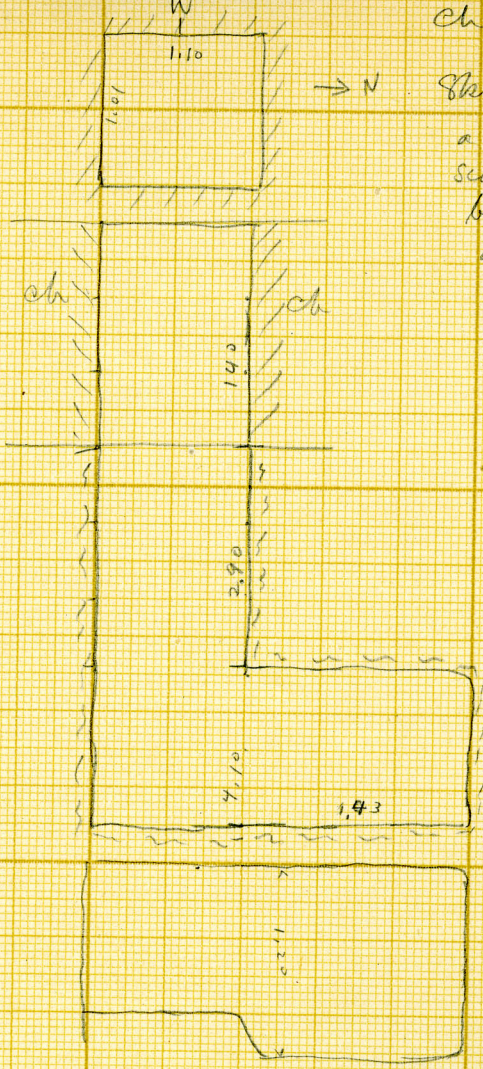
ch at W

Disturbed
burial -
pelvis +
a few ribs etc
of adult
head very N-



19 May 6

G 3004
D



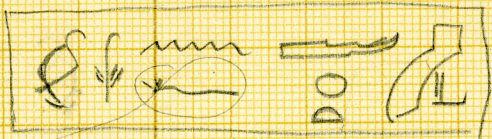
Chat N
Skull +
a few
scattered
bones of
adult

19 May 16

G

"log" lintel

lying near N-W cor
of 2080

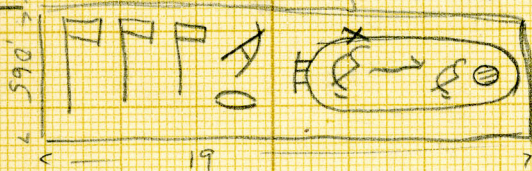


?

m. h. of strow

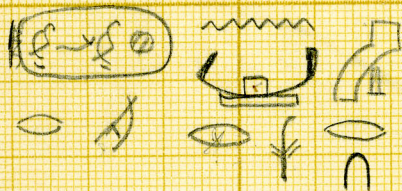
3004

"log" lintel in situ over niche

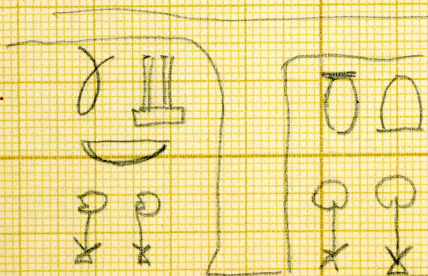


at x the edge
of green color
hawfw

hawfw m. h. of strow = Name
Relief above lintel



in situ at. field



below table of
offerings

82c'16

(over)

C. 3005:

Brick facing with rubble faced debris core.

The A shaft is lined with rubble brick all the way up as far as is preserved while B. and C. are mud brick at the bottom and finished with rubble. Beon the west side has mud brick repair at the top. The division wall between A. and B. is mud brick on the A. side and rubble on the B. side. In the north side of A. shaft at the top are bricks 36 X 17 X 14. On the west side at top are bricks 27 X 14 X 8. Along east face the lower eight courses are brownish bricks 33 X 17 X 11. The upper ones above these are greyish 35 X 18 X 14. This recess is at south end of stone roughly dressed behind which is a small serdab. The offering room with the shaft superstructure was added to B

545
240
305

Continued:-

3005:

the face of the mastaba. In this structure are
~~the~~ two sizes of bricks 36 X 17 X 12. At the bottom and above
are dark grey bricks 36 X 17 X 12. This room is plastered
with a thick layer of mud and sand.

G. 3005 =

Rubble filled c.b. facing
batter = $W = 85^{\circ} 0'$

C. br. of walls of shaft at S =

(17 x 34 x 11)

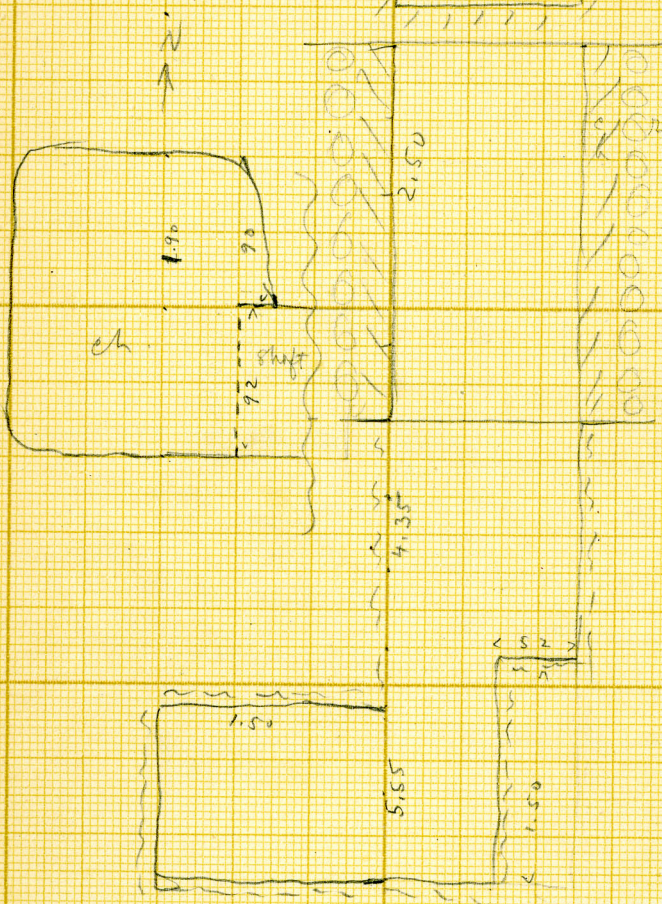
19 x 34 x 14

upper part large dark gray tho
lower " " br. "

G 3005
A

ch at W

Shall
only in
ch



1.50

92

1.44
92
52

19 May 16

Rubble core

faced c. b. lowest, 9 +

c. yellow sand mixed
bricks $32 \times 16\frac{1}{2} \times 10$ above gray c. b. with
more straw $\left(\begin{array}{l} 34 \\ 36 \end{array} \right) \times 18 \times 13$

Line of division fairly horizontal

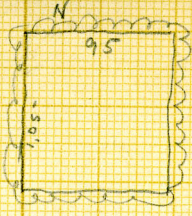
At S. end, ^{subs.} 2 pits built against
rubble core before casing.

The E & W walls of Perdot run
through to S. Later S. wall
above demarcation line is of
the larger bls. & rest on debris
large stone lines with apparently
of second stop in construction
stone niche plastered pinkish

A. E side rubble for half height
above larger c. b. other were
small bricks.

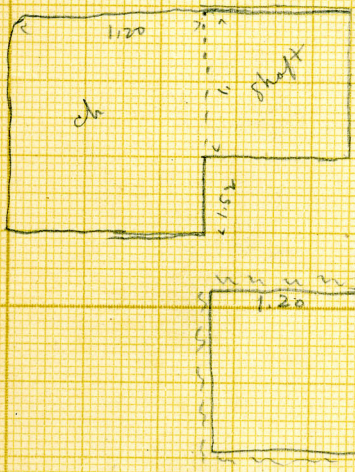
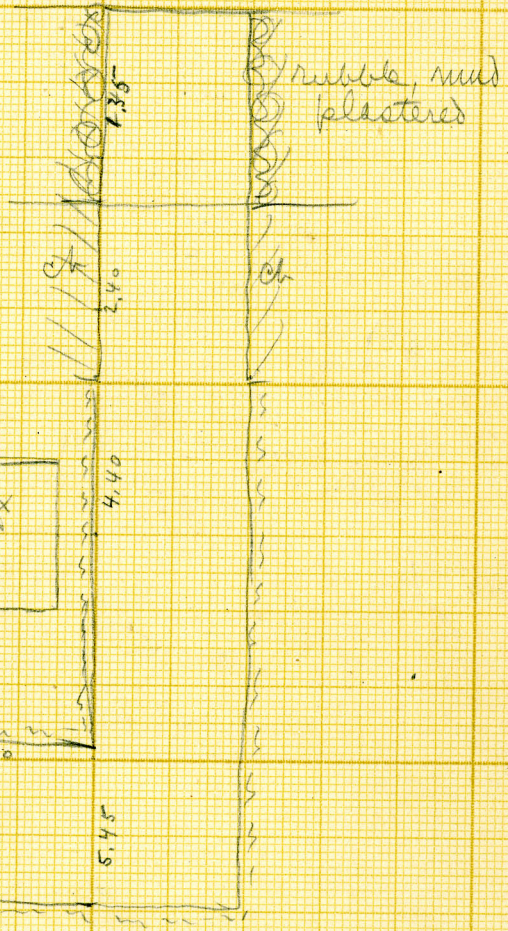
G 3005
B

chat w



156

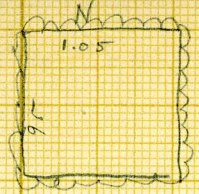
57



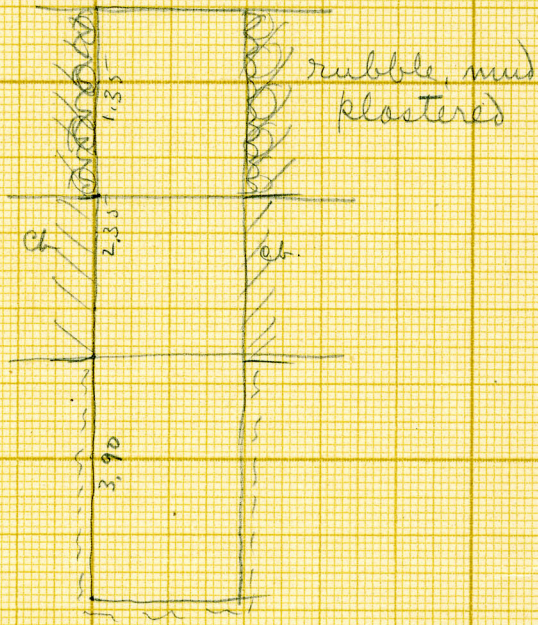
19 May '16

B. c. b below middle above

G-3005
c

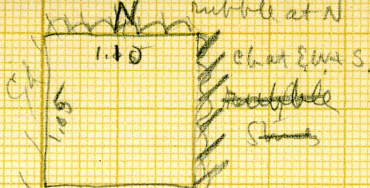


Shaft



19 May 16

G 3005
D

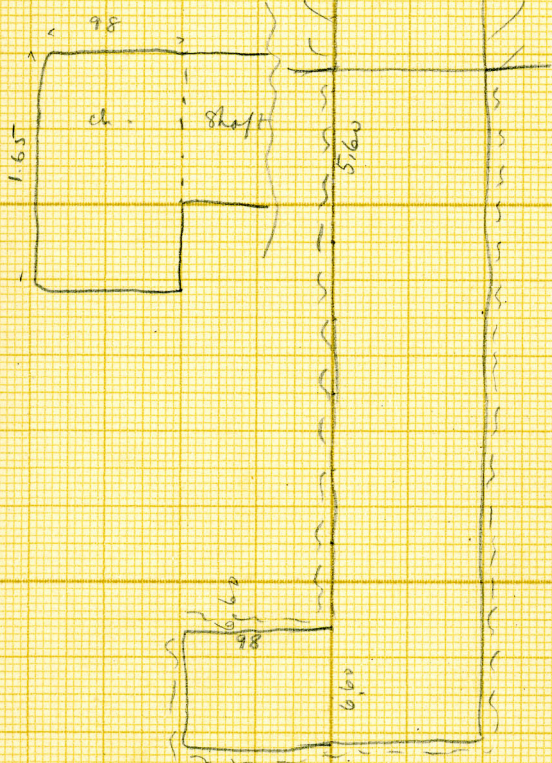


ch at W

Skull +
a few
bones
of adult

also remains
of wooden
coffin

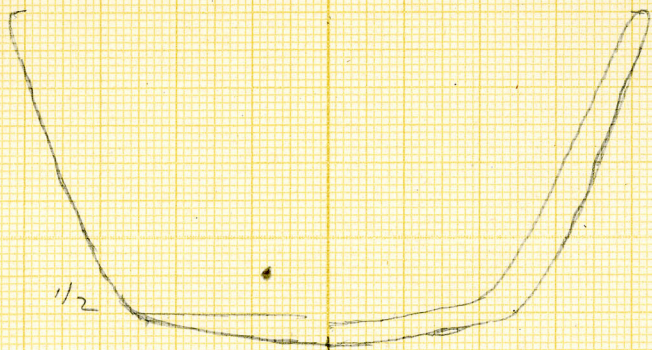
1.65



19 Aug 16

9
3005

D



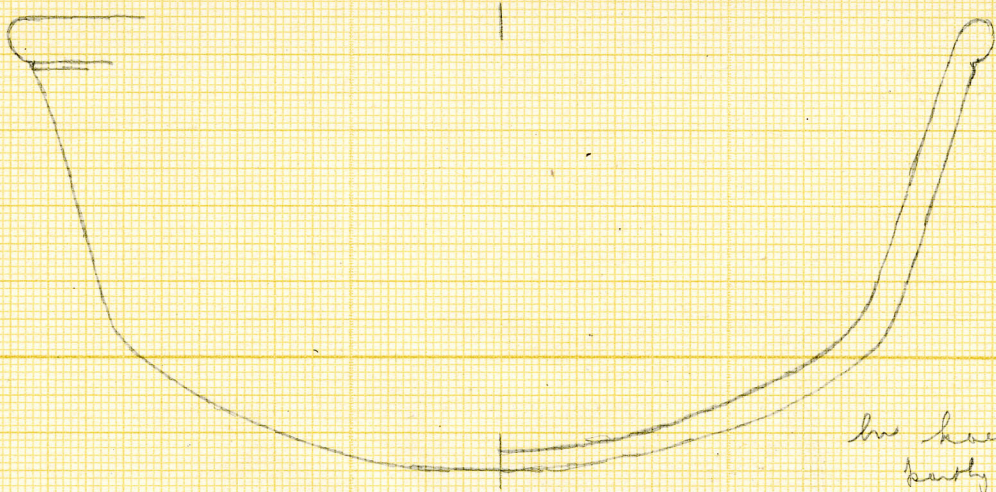
1/2

lus. met em.





3005
96



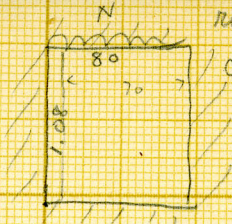
has been found
partly finished





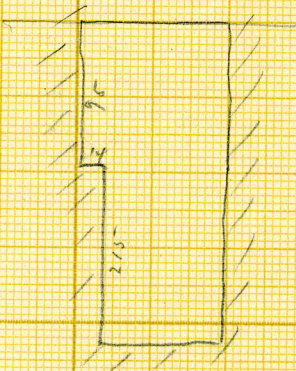
G 3005 $\frac{E}{2}$

95
215

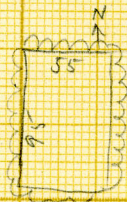


rubber at N cb shaft
cb at SW & S

14



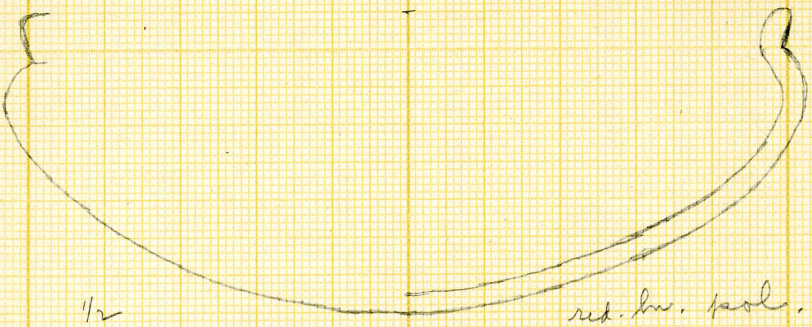
G 3005
F



shaft
empty
depth 90

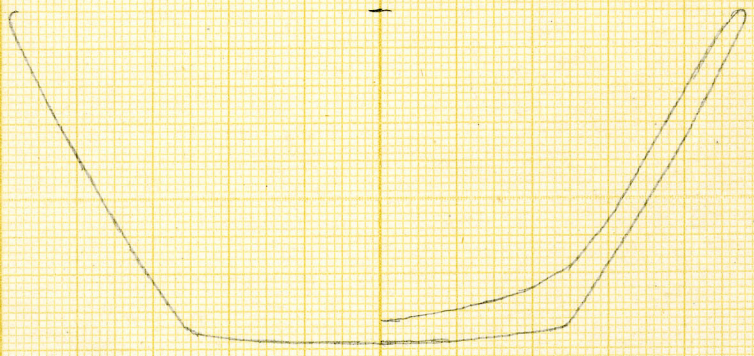
19 May/6

3005 E

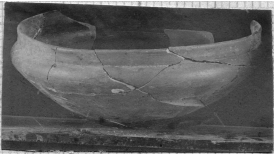


1/2

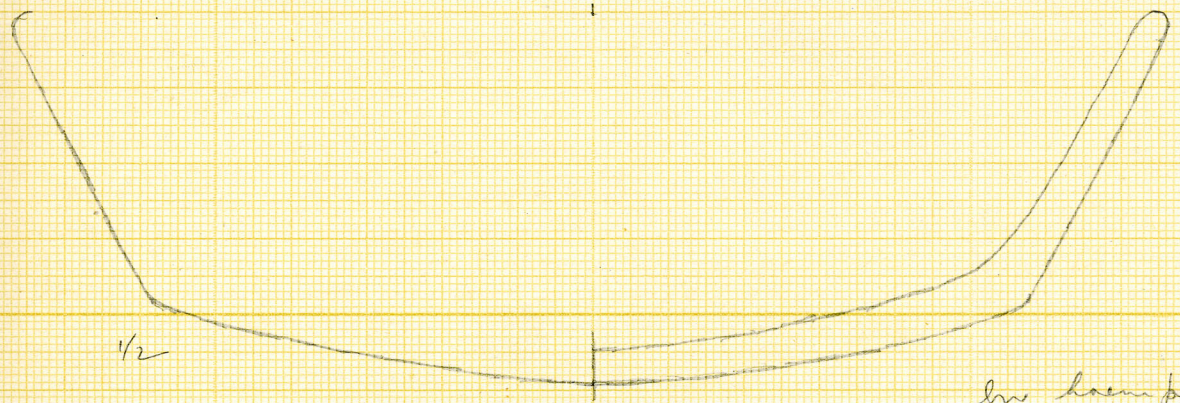
red. br. part.



br.

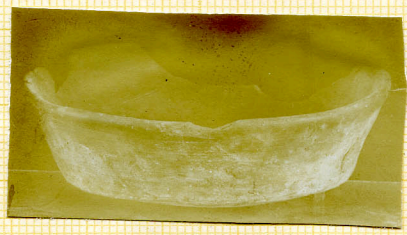


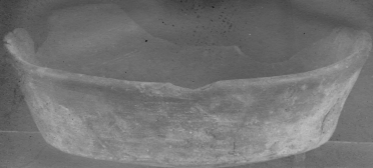
5
3605
E



1/2

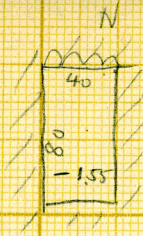
low haem pot.





$$G \frac{3005}{G}$$

(S)



Cl shaft

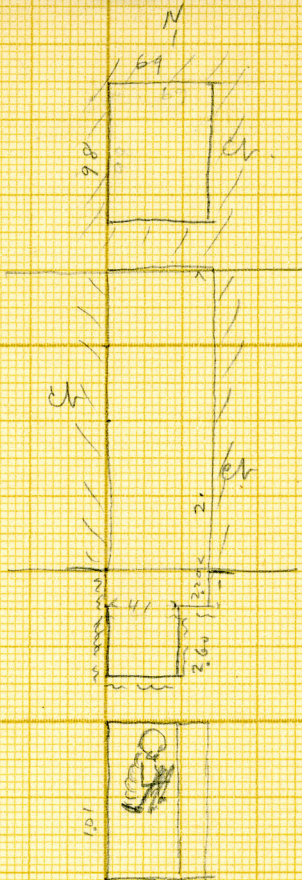
randah

19/12/1

G (?) S of 3006
E of 3005

3005
X

4' x 1.01



8 shaft
9 ch.

Burial
in rect
grave pit
cut in lat
in bottom of
shaft along

W side

adult ♀

Contractor on
L side, head

W, face E

Knees up to
face, arms
about knees.

19 May/26

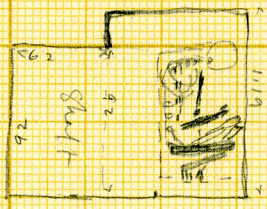
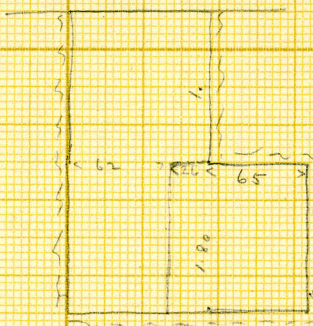
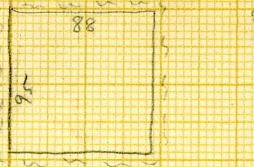
all c. b

3006:

The bricks in the upper course are dark grey 44 X 20 13 and the lower layers are 35 X 17 X 12. The rubble buttres along west face of the shaft A. of 2098 is built against the north east angle of 3006. 3006 is brick faced with rubble filling, the shaft superstructure having been begun with rubble.

The northern end of the offering room of 3005 was divided into two by a thin wall of mixed bricks and a door jamb built of dark grey bricks at the northern end 3006 and 3005 are of the same period.

G 3006



ch at L
 outline in list.
 Burial
~~contracted~~
 adult ♂
 contracted on
 l side
 head N, face
 down.
 knees raised
 w/ arm
 L over
 body, l
 arm down
 Netting legs (?)
 remains of
 mud under
 body. ^{ca 95 x 62} A few
 bits of dried
 flesh adhering
 to knees.

Shirts against
 3088

19 May 6

part in rock. superstructure
around pit zone. Surrounded
with c. b. wall, brick thick
built against 2088

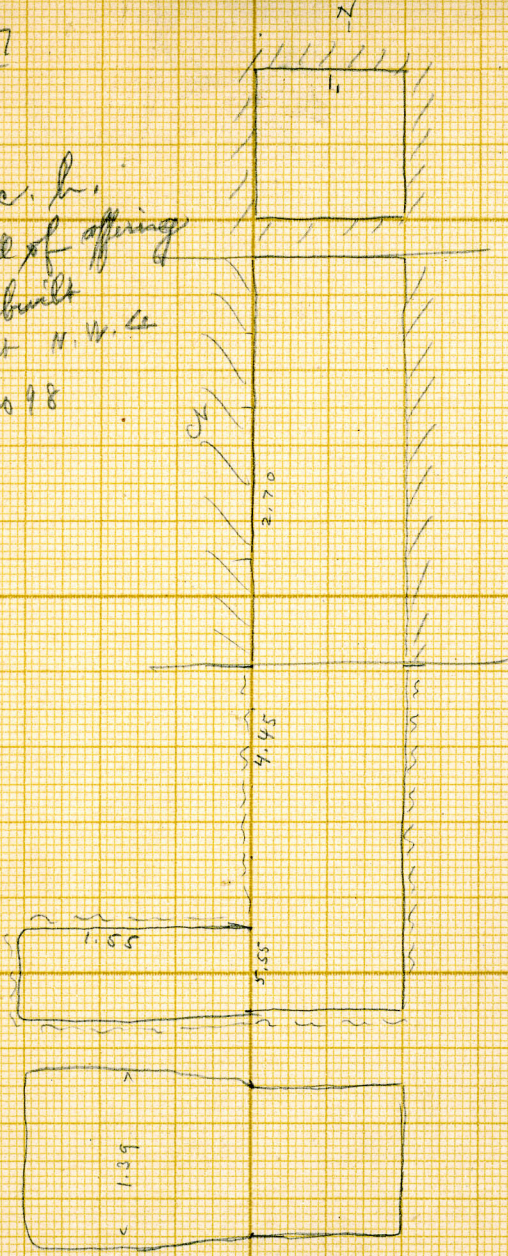
G. 3007:

Mud brick throughout. Dark grey very sandy bricks, 30 X 15 X 10. The east face so far as cleared are alternate double and single niches. The single niches very small round log lintels with a flat lintel log above., mud plastered white stuccoed.

G 3007
A

Ch atw.
Empty

all r. h.
E. wall of offering
room built
against N. W. Co
of 2098



~~W.~~

19 May 1966

all c. b. with exception
of some rubble work
around Wt. of pits, remains
of which visible on E +
in divisions

G 3007
B

Chat W
Empty



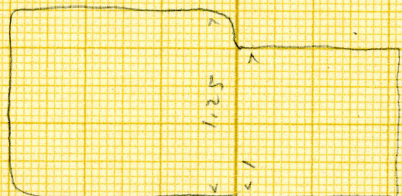
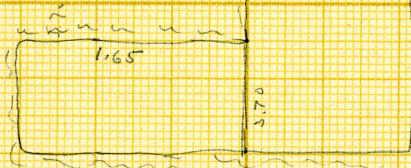
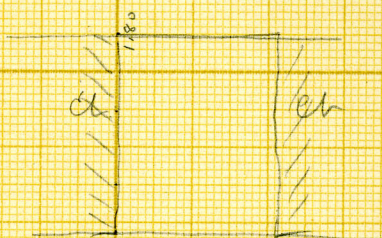
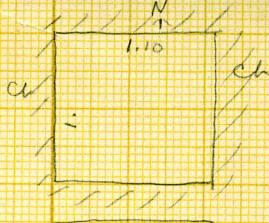
1.40

19 Mj 6

B 3007
C

chat w

Empty



1.25

19 May '16

G 3007

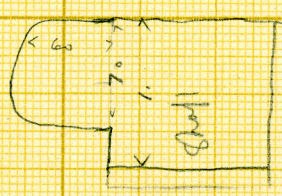
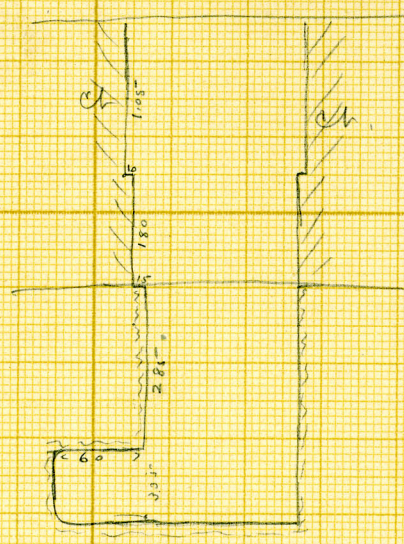
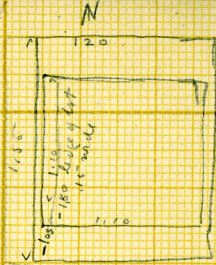
D.

2.85

3.35

chat W

skull only
in ch.



19 May 16

G. 3008:

Rubble filled, stepped casing, originally east face being a niched face in the offering room. The mastaba was later enlarged by the addition of an offering room and the stepped facing extended to north. Later the entire mastaba was enlarged by a layer of mud bricks 37 X 20 X 14 dark grey. The offering room walls are smoothed with hard pinkish plaster. at inner end of offering room there is an unfinished shaft which runs under the south wall and slightly under west. In the original offering room the entrance was at north but it is not clear whether the entrance of the reconstruction was also at the north or at the east as this angle is entirely destroyed.

G 3008

~~all c.b. painted~~

batter $W = 84^{\circ} 0'$

.. W face of N. radiation = $81^{\circ} 15'$

c.b. in S+W walls.

20 x 38 x 13

built against 3005

covered ext. facing +
painted chamber ext. planks.
rubble core. W. face + S
face c.b. also wall outside
of S face.

later than 3005

9
3008



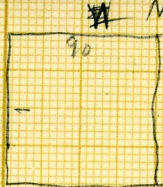
A12

for view of offering room see C 325



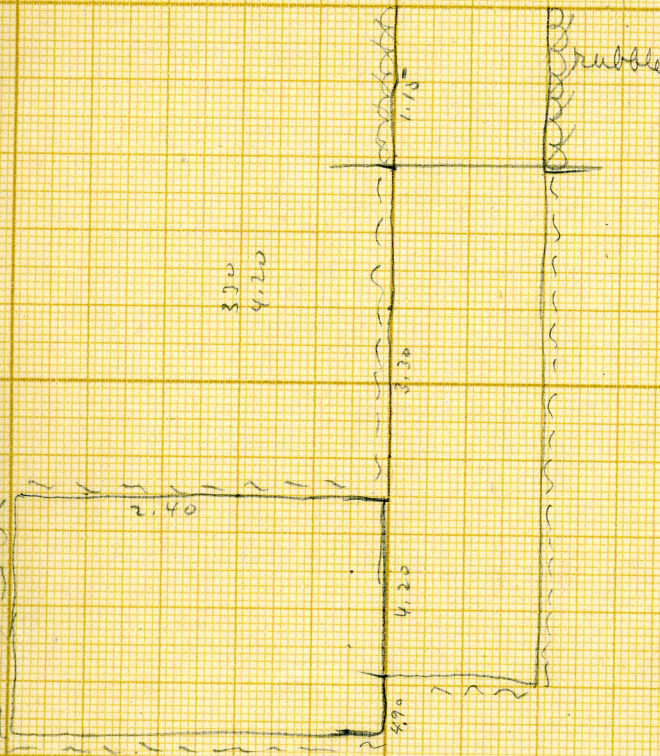
G 3008
A

(1)



ch at W
with large
lst saw up to us
(in effect, though
cut from the
natural rock)
con slabs all
pulled off +
fine stuff -
in ch. a
broken skull
+ two leg bones

3.70
4.20



for plan of ch
see sheet (2)

19 M/6

Stepped architrave original.
Pits middle lined
later surrounded with a b.
wall + upper part of pits
repaired with c. b.

Orig. door front to E.
Later an extra casing of architrave
on N face. + door front,
made at N end chamber.

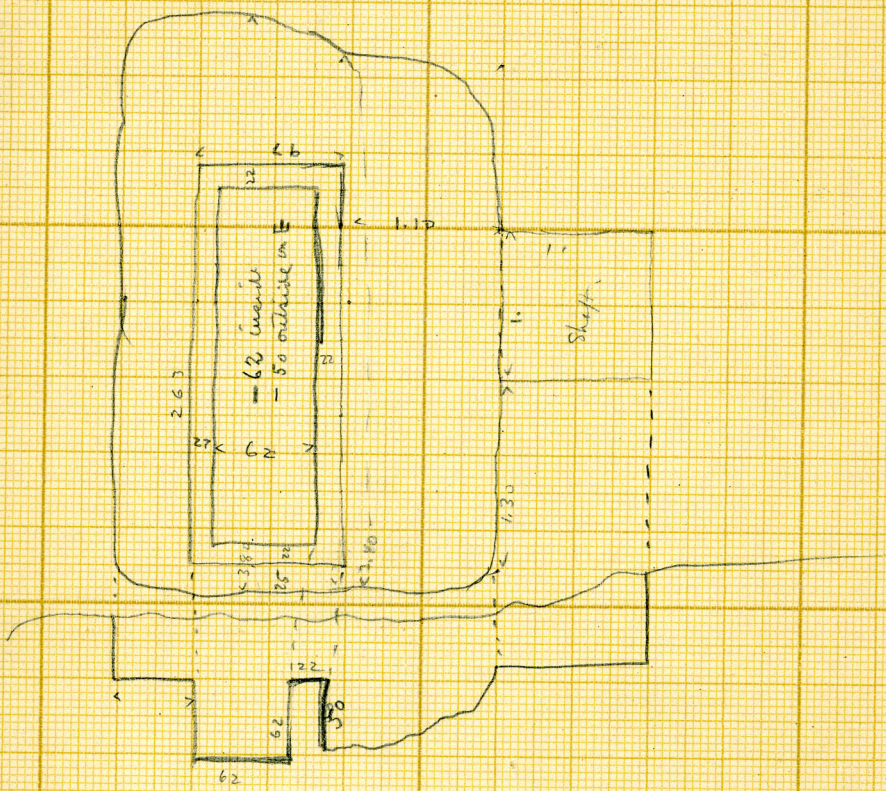
In N. E. C. c. b. section
above X

G 3008

A

(2)

N



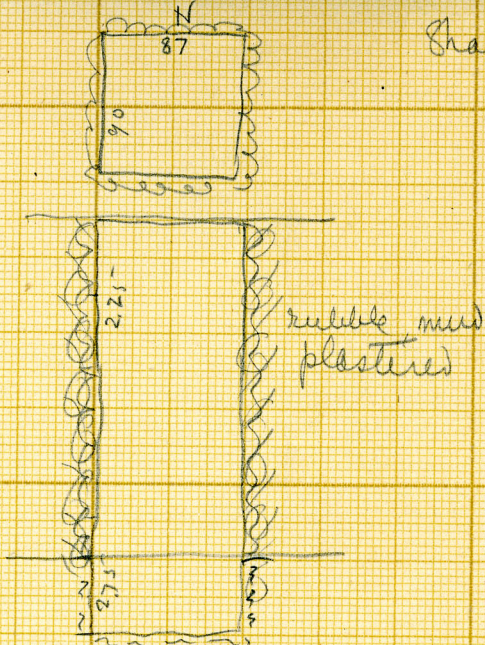
of. C 610

2.63

19 May 1966

63008
B

Shaft

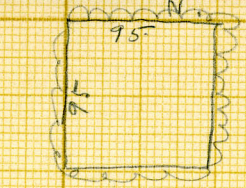


19 May 6

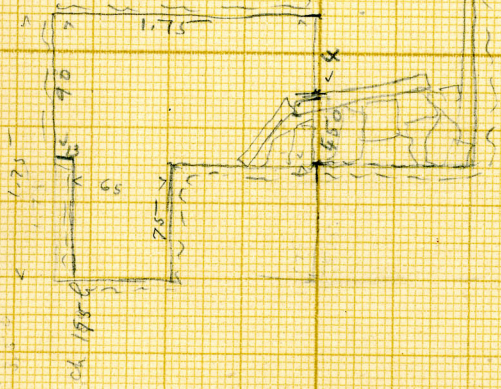
G 3008
C

(1)

chert w
debris in
lower part of
shaft - rough
stone, and
slabs - the
latter apparently
made from the
cores of the
stone pit.



crumble mud
plastered



for plan of ch
see sheet (2)

19 May 16

3008



A487



3058
c

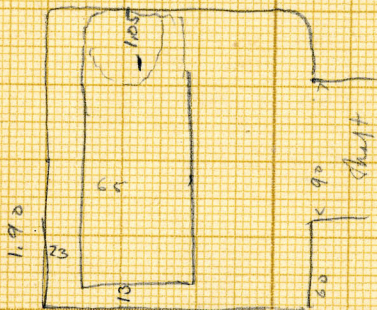
(2)

plan of ch.

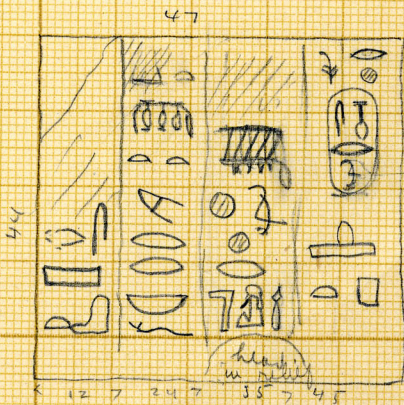
rect
grose pit
mineral -
concrete slabs pulled
off - no human
remains

in bottom of
shaft + frag of
relief with
4 lines visible
in hieroglyphs.

This block fell
into shaft from
"painted chamber"
above at E.



524

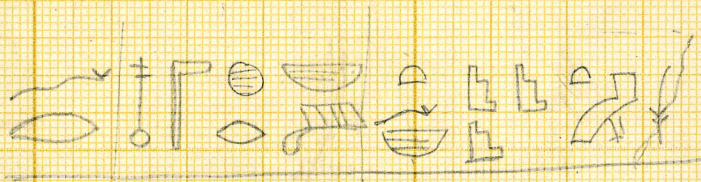


Smf-ru
htp

19 M₂ 16

G 3008

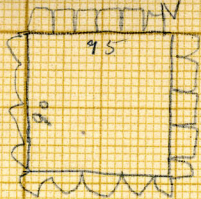
frag. lying near ^{painter's} chamber



11 cm. wide x 40+ long.

reversed before the good god

G 3008) V
D
just W
of Shaft C
93008



built shaft

~~93008~~

B

only N + W
sides present
to any height

- 2.33 to water rock
in NW corner.

- 92 in SE corner.

20 May 16

G 2008

+

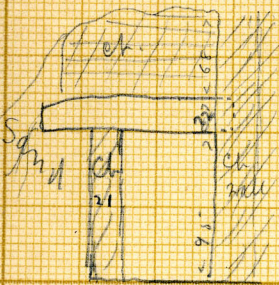
N of painter
off. chamber

ch N

64

3.6 built

tomb -
w/ jet with
let.
slabca
22. thick



ht. 9.5 inside

ch
ht to top of wall

outside 1.85

wall of
quartzite

20 May 16

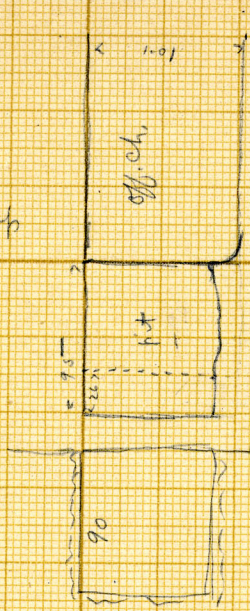
G 3008
Tomb with
painted
walls.

Y

N

near N end of
ave. - masonry.

Smafer-höle



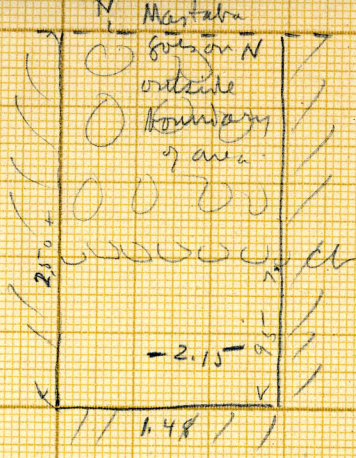
Pit at
S end of
offering ch.

Pit runs S
25 cm. under
S wall of off.
ch.

No human
remains.

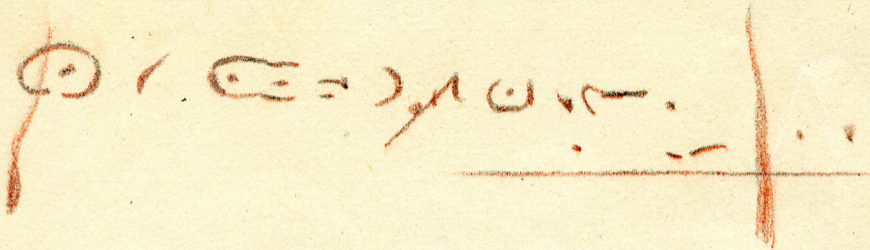
20 May 1966

(G 3008) } at N edge of area.
 Z
 NE of painter
 off. room



cb. built
 sharp +
 N end filled
 with rough
 stones +
 sand

20 M/6
 dy



GIZA 3008



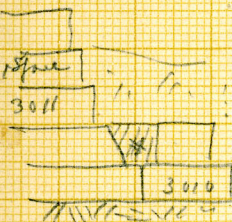
G. 3010: This was rubble and debris filled with mud, stepped facing east face with larger blocks not laid in courses but dressed to a battered face with one double niche and one single niche. Between these are two small very slightly cut single niches. At the northern end is a space which may have held a nich block now removed. This mastaba was built against 3011.

Guzai

G 3010

mastaba rubble filled, faced with
well squared ^{lstr}
room W wall = 84°

815 x 320



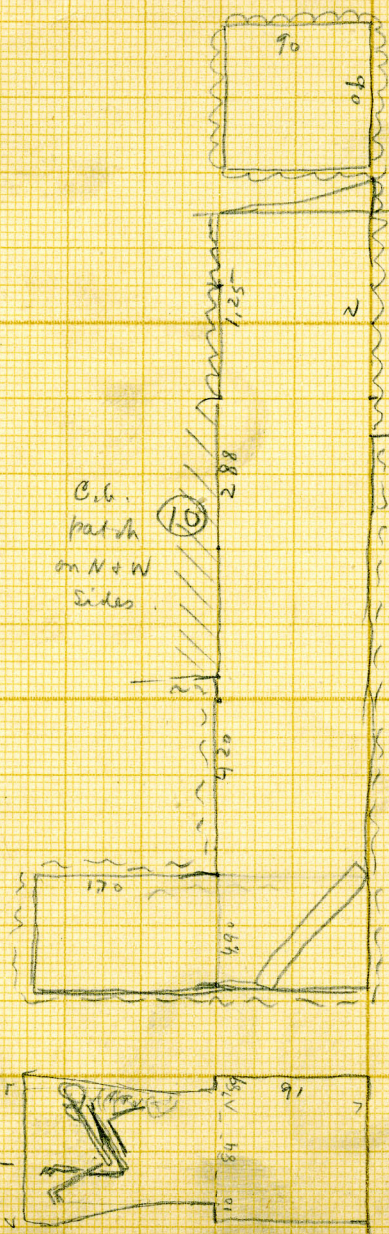
stone X cut with sloping face
to fit against stone in S wall
of 3011

Shafts X + Y in passage between
3020 and 3010 apparently cut
after these were built.
See X wooden coffin intact.

G 3010
A

W

Ch at S



Disturbance
 → N adult
 burial
 apparently ♂
 skull broken
 contacts on
 side, head N
 head on a stone
 Large bones

In shaft
 large lat
 block, tipped
 back from
 doorway
 90 x 51 x 15

C.b.
 patch
 on N+W
 Sides

26 May '66

Serdab

with window sloping
up → E in rubble 14m x 8h