

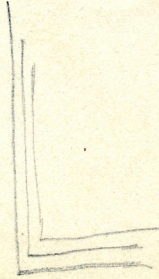
~~14.53~~

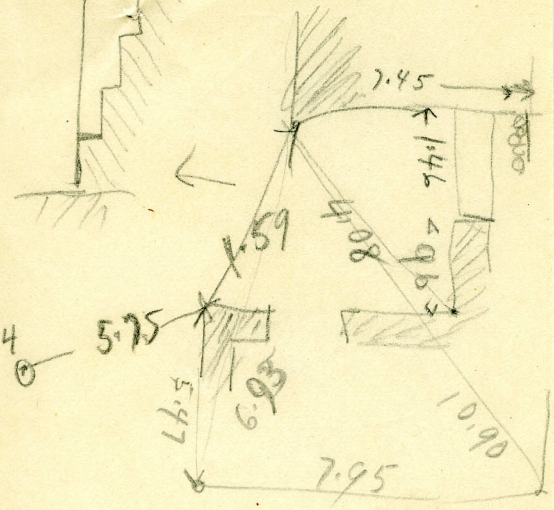
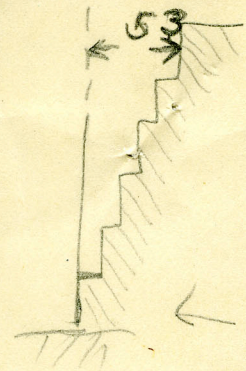
14.53

8.45

8.95

334





10.85

14.45

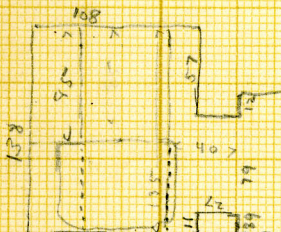
11.37

4.45

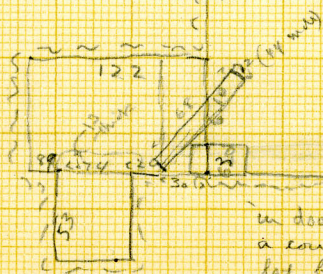
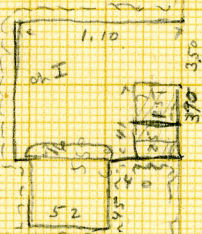
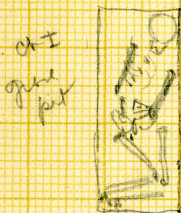
G 2090
B

In bottom of
Sheet + door slab
of ch II
82 x 55 x 13

also small blocks
(pulled from doors
of ch I + II?)



401



26 M 16
F

in door of ch II
a course 20 h. of
lat. blocks plastered

2 ch out W

I upper ch. with
rect. grave pit.
one corr slab over
pit at S end.

In pit. adult ♂
on l side, head N
face E; skull fallen
face down in NE corner.
l arm under
body, hand
down under
pelvis, rt fore
arm missing.
bones slightly
disturbed.

I In door way 3 courses
square lat blocks
(40 high in all).

ch II

for plan see
Sheet (2)

part way
through door is
the middle one of
the 3 cover slabs of
grave pit, which has
been pulled off.

6-2090
B

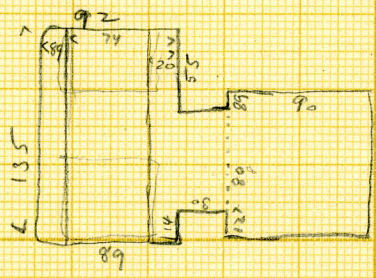
(2)

N
↑

ch II at W.

Reinforced - adult ♀
on l side, head
N (resting on 2 small
stones) face E
knees up, hand
down between legs.

- 3 cover slabs
- 45 m de
70 l "
13 ft "
at N End
 - pull off
into doorway
68 l
44 w
12 ft
 - at S end
70 l
46 w
13 ft



26 July

G 2090
C

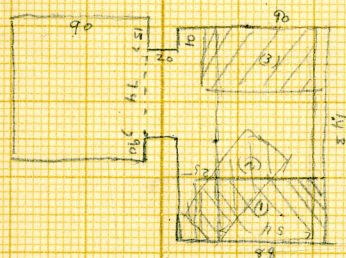
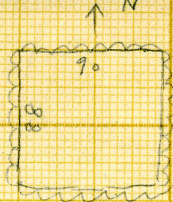
concrete slabs of pit,

1. $45 \times 75 \times 12$
2. $42 \times 70 \times 11$
3. $46 \times 75 \times 13$

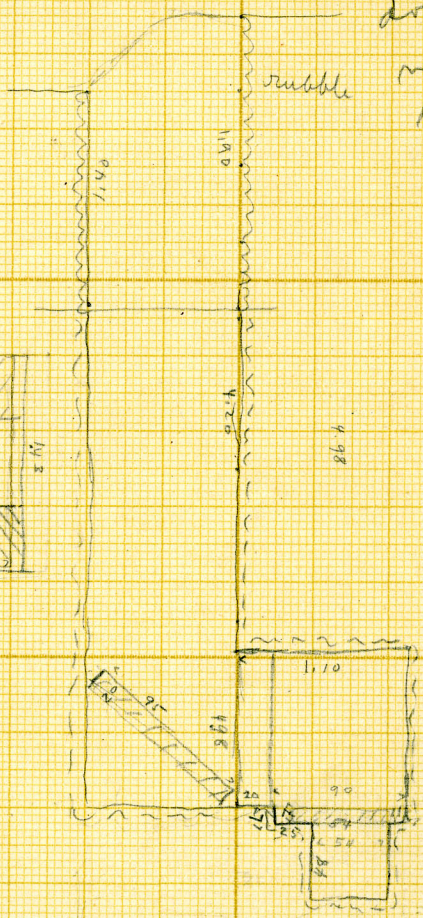
ch. at E

on bottom of shaft - door
block pulled back
($75 \times 71 \times 20$)

door sealed
with large
logs



concrete
 $75 \times 76 \times 13$



cf. C 27 for shaft

26 M/16

G2091

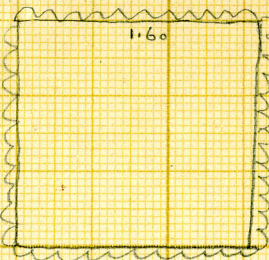
Mastaba, rubble core, stepped
facing, which only a trace
at S end of E side and under
2092, which is built over it
~~at N end~~ the face of the
older rubble core runs into
2092 on W + E.

E face is line of 2090 east which
is built against it. S. limit not
traceable as another mastaba 1211 stands
over it, but probably the S. core wall
face is represented by the N face of a
shaft (?) at N.E. corner of 1211.
On N. part of W. face a still 2-3 courses
of facing following the rock drop.
On N. face 3 c as on E 2 c. in situ
On this part the c. h. facing of 2092.
1 large rubble lined shaft

G 2091
4

(1)

ch at S.



8.40
- 9.80

1. m ch. on top
of gravel on
S + W sides

1.90

8.40

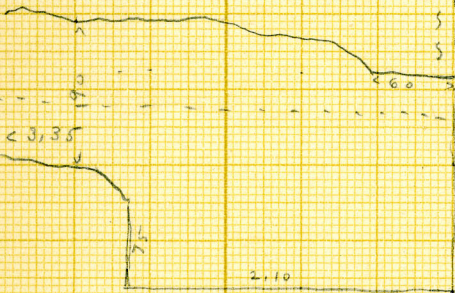
9.60

1.5

0.61

patch in
E wall.

set blocks -



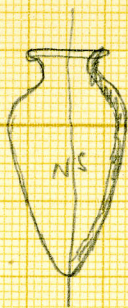
section line -
for " see sheet (2)

2.10

26 M₂ 16

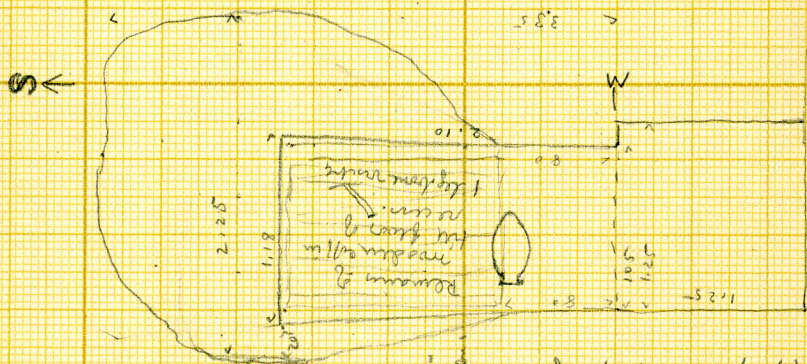
G 2091
A

(2)



Roof of ch. in rubblely
let; loosened parts
picked off when ch.
was cut, as pick
marks on present
irregular ceiling
indicate.

In ch. remains of
wooden coffin; 1 leg
bone visible. at N
end of coffin 1 red wax
impression (broken) by 38, d. 21
Smooth surface



Sh at
floor level -
not accurate

In bottom of shaft
small rough stone
from wall blocking
door way.

26 M/16

7
2091
A



4938

Chamber = C 607

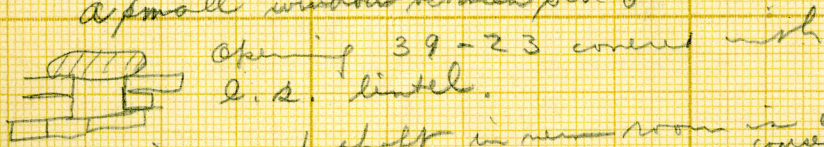


2092

latter E face of c. b. = $82^{\circ}25'$

"
 masonry built over N half of 2091, using lower
 c of ^{older} stone stepped facing & finished with
 face of c. b. over the old rubble core.
 Main offering chamber at S. end of E face
 to S. wall of c. b. in line with new
 S face, a large niche. Door to E.
 later (?) a second chamber built enclosing
 a rock shaft to N. leaving a passage
 open into older room. The entrance
 was through a c. b. door in space
 between 2092 and 2093. Later a rubble
 facing wall was built over the S side
 of 2093 out to face of N. jamb of this
 door.

On S wall of room are remains of
 mud plaster & 2 coats stucco, white over
 a yellow. Bricks $17 \times 34 \times 11$
 a small window between old & newer room.



Beside rock shaft in newer room is one
 just begun. In this one the ^{course} red
 now join.

(OVER)

Shaft A. Rubble faced except for
ca 75 cm. above rock which
is of c. h.

Room at E

Prob. original shaft re. used in
reconstructed mustaba.

Shaft B. asken to axis.
Rubble construction in the
rubble core, (not carried down
through rock, Room N.
a later use.

Shaft C. Rubble faced except for
mud plastered.
Room N.

asken to axes.

B * C. prob. still
show use of mustaba

2092



A13



9
2092



d

c

AG
/ b / a

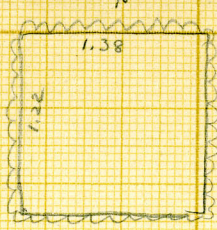


G 2092
A

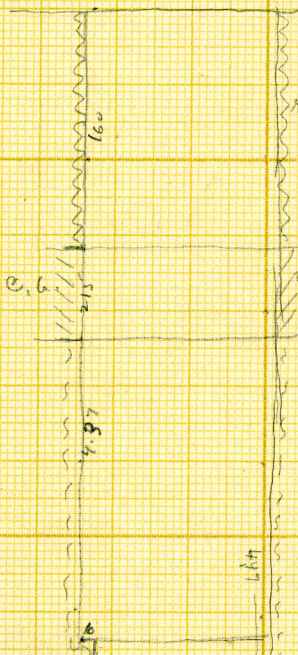
(1)

Ch at E

of
shy.
found



door still
partly blocked
with square
stones laid
in patches
cement.
Thos pulled from
door lie in
bottom of shaft.

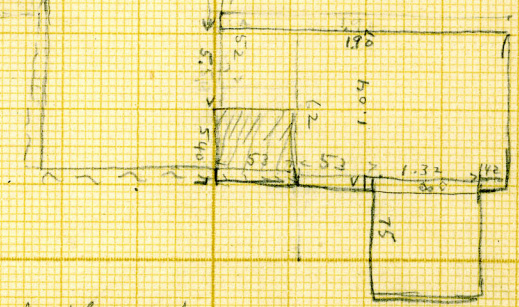


rubble

Burial pit
sealed with
3 slabs.
In 2 d from
S. o circular
hole.

X. limestone
gap stopper
with plaster
making very
waterproof

at - 4.37 ledge 10 wide
on N + W sides shaft.



for plan of ch
see sheet (2)

26 May 16

G 2092
A

(2)

N

Pit has
3 core blocks

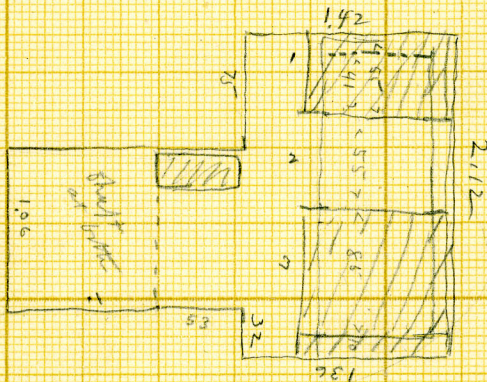
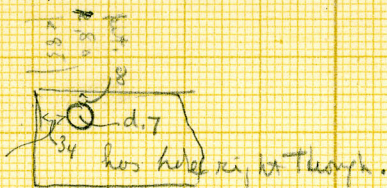
1. 85 x 55 x 8
in place at
N end -

- * 2. 82 x 53 x 7
pulled from
place - now
leaves against
E wall of ch.

3. 85 x 85 x 8
in place,
over S end of
pit.

Pit empty -
in debris of
ch. a few
broken adult
bones.

Core Block 2



26 1/6

5
2092
A



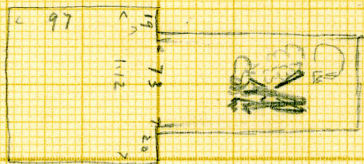
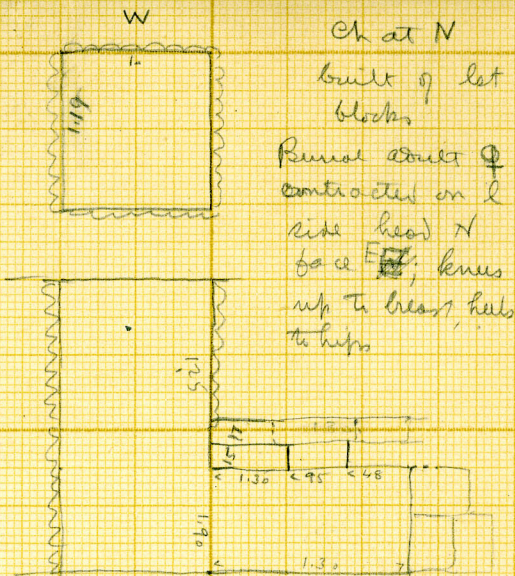
1440

A black and white photograph of an archaeological site. A rectangular area is excavated into a light-colored, possibly plastered, surface. The interior of this area is dark and contains several fragments of light-colored, irregularly shaped objects, likely pottery or stone. A small white label with black text is placed on the right side of the excavation. The label contains the letter 'G' at the top, the number '2092' in the middle, and the letter 'A' at the bottom, separated by horizontal lines. The overall scene is a close-up of the excavation site.

G
2092
A

G 2092
B

48
95
130



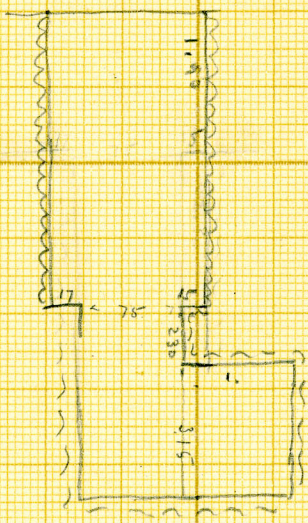
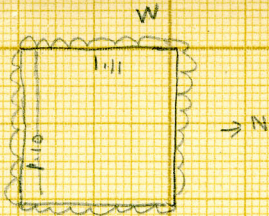
73
19
19
20

Chamber sealed
with oil.

26 M/6

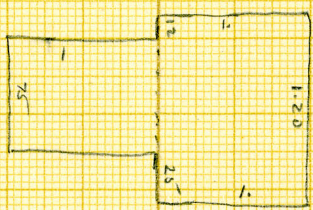
G 2092
C

Ch at X.



no sealing

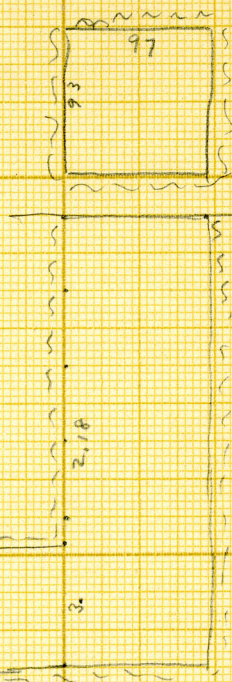
Small heap
of bones
piled at
left of
entrance



26 May 16

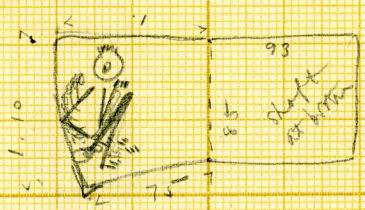
G 2092
X

ch at S



Burial
 → N (disturbed)
 adult ♂
 Contractor
 on E side
 head W
 face N
 (skull now
 upside down)
 knees up to
 chin, hands
 heels to
 hips, or hands
 at feet, lot
 of ^{char} few bits of
 wood -
 apparently
 not from a
 coffin -

75- W



bones of toes
 of fingers of rt
 hand nipped
 some finger
 bones held
 between lower
 leg bones
 - i.e. rt hand
 was between the
 legs.

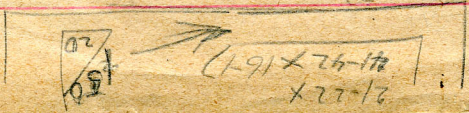
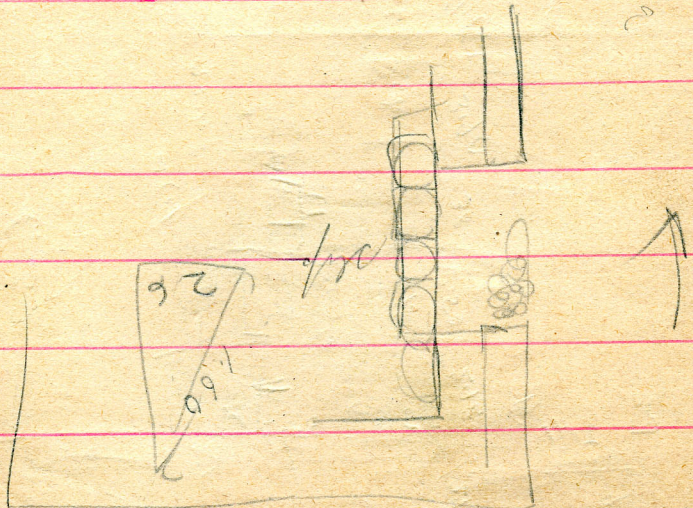
G. 2093:

The whole of the upper layer west of shafts is rubble repair 40 Cent. deep. The door jamb south is built into the mud brick masonry of main structure. The rubble facing on west face ended in line with south brick face and later rubble on south lines up with face of jamb.

The X shaft at north and west is of dark grey bricks like those of main structure. The east and north sides including jamb of offering room No. 2096 are built of bricks 31 X 16 X 11.

Batters: E face $83^{\circ}40'$
rubble W face $81^{\circ}30'$
" S face $77^{\circ}50'$

$18 \times 37 \times 10$
 plus 26 mm 200
 3 m left
 Ann 8-4 = $17 \times 32 \times 13$



~~9085~~
 3030

8, 2093 *Mastaba* c.b.

latter E = $83^{\circ}40'$

815 x 450

630

rubble W face = $81^{\circ}30'$

" S a = $77^{\circ}50'$

50 cm rubble facing

c.b. core and partly faced
c.b. but on W and S side with
rubble plastered with mud.

c.b. in core = 18 x 37 x 13

in walls of offering chamber =

21 x 42 x 15

20 1/2 x 41 x 15

at N. a c.b. addition
with F shaft.

Perhaps some period of repair
in rubble c.b. of 2095-96
cf. C 34-35 for similar in situ

Object:

In S.W. of chamber W.

remains of masonry (G 21)

In offering room, still at

with slab.

In N. and offering
room sketches
G 30

(G 22-23/
& basin (G 24)

9
2093
Offering room.

- cf. C 32, 33 for steel & statue in situ
- 36, 37 " "
- C 64 for statue removed & niches
behind partly cleared
- C 65 for both statue & steel removed
& niches cleared.
- cf. C 52 for statue
- cf. C 38 for steel
- C 269 " "

-
- cf. C. 40, 41 for small statue in situ
 - 51 for statue.

-
- cf. C. 34, 35 for Treasury statuette
in situ
 - cf. C. 53, 54, 55 for Treasury statue
 - C. 75 " "



Piza 2093

subble foing period

→ W of E

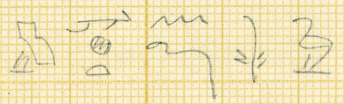
x

17 May 1919.

~~G 2080~~
- 2093



4486



m bt md sw



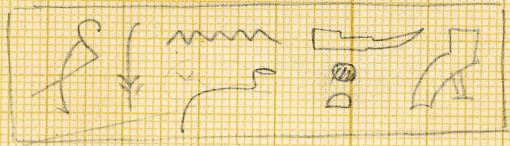
~~2080~~ x

- 2093

near

N-W corner

"log" lentel



m ft and 'sw'?

5
2093



A10

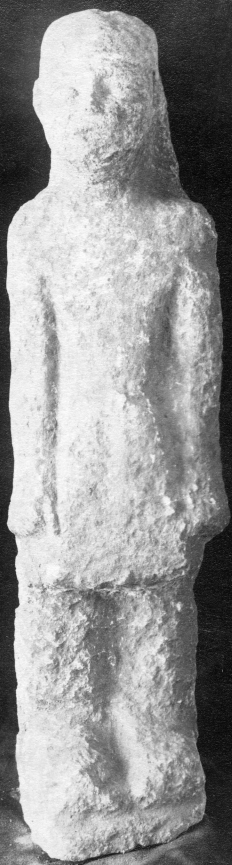


S

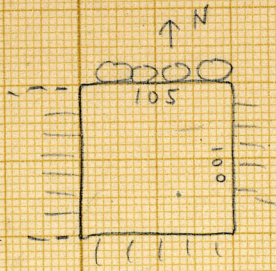
2093



51



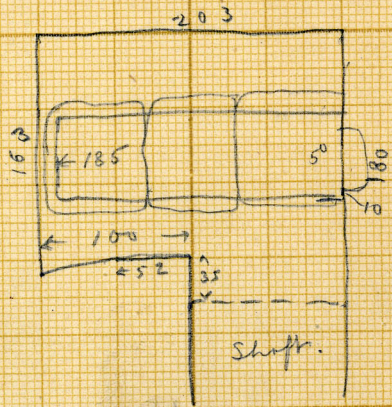
G 2093
B



shaft W.
106 x 90 - 425
on N. side top
row rubble
over c. b.

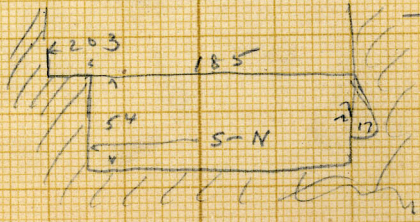


Chamber at W
203 x 180 - 107
apit in floor
roofed with 3 slope
kerb with mortar
Sealed with 2
slanting blocks.
Burial: adult skull
mortar - tree standing

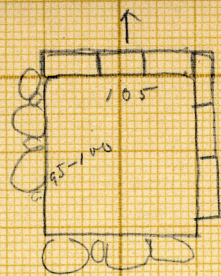


Large chunks of red
b. b. (?) embedded
in the kerb with mortar.

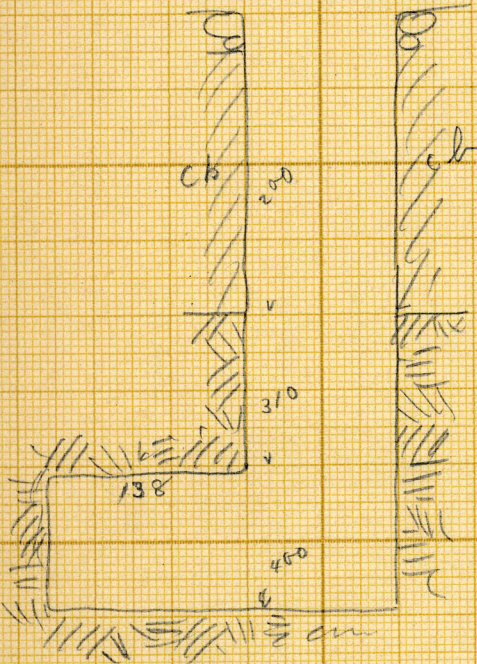
concrete
29 May 16



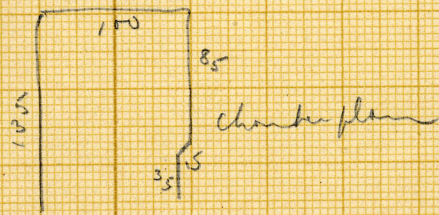
G 2093
C



Shaft 100x105-385
Chamb at W
135x100-90

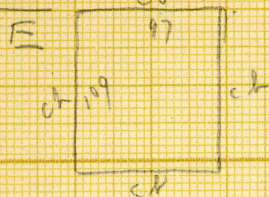


Burial: none.



Checked
24 May 16

G 2093



shaft 95x106

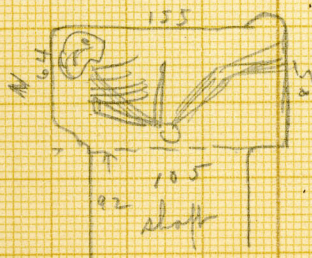
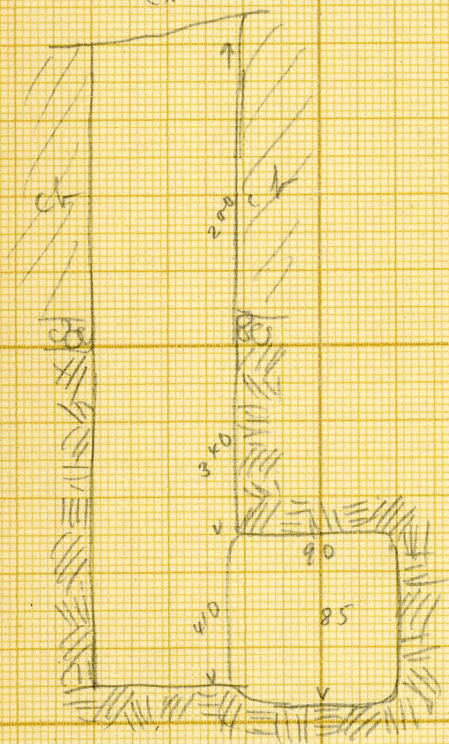
-425

chamber at E

155x85-85

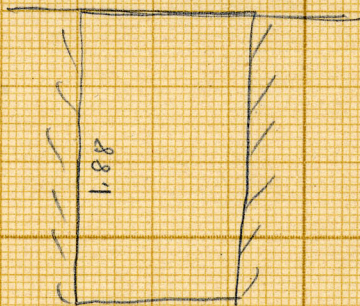
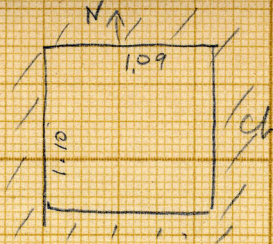
floor 15 below
bottom of shaft.
Sealed with 3
slanting stones

Adult female?
on l. side head N → E
legs slightly drawn
up. l. arm + r.
fresh mummy
shells crushed.
+ bones broken



G 2093

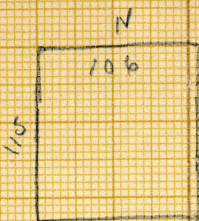
$$\frac{F}{A} = X$$



24.11.16

G 2093

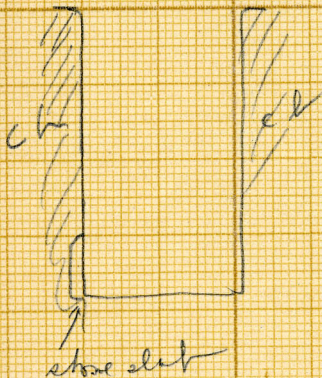
X



Shaft
106 x 175 - 190

No chamber

but one started on
W side, i
filled with
bit of rubble
on S edge.



G. 2094:

The offering room has one double between a single nich allplastered with yellowish stucco made up largely of sand. In northern wall of offering room which is built in between this and 2081 are faces of a window 35 Cent. wide sloping down into a room. This was also plastered with a yellowish stucco. The inner edge of window was about 120 above the floor of offering room. The mastaba was wholly of mud brick repaired or filled in above west of the shafts with rubble. This line of rubble has a fairly level horizontal line. This mastaba is earlier than 2081 and the building of 2081 made it necessary to extend the offering room of 2094 toward the south and the addition of a little anti-room.

G 2094

latter $S = 84^{\circ} 45'$

" $E = 85^{\circ}$

c b = 18 x 37 x 13

In offering room debris

50
jar pink ware smoothed,
20cm h.

(G 25)

Debris at E end,
log hatched

G 33? (cf photo G 39)

G 31

C. 267

Along E. edge of

chamber N. of

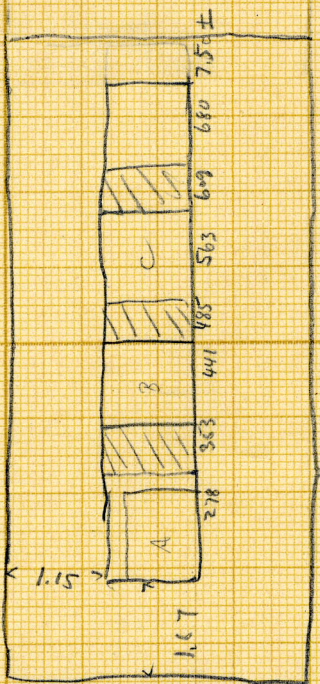
offering room was G. 37 = (264/1)

In chamber N. of offering room. 2094

- No. 32 = C. 264/3

G 2094

location of shots ^N



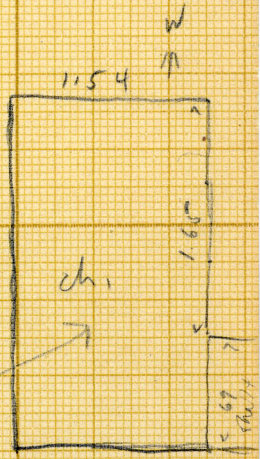
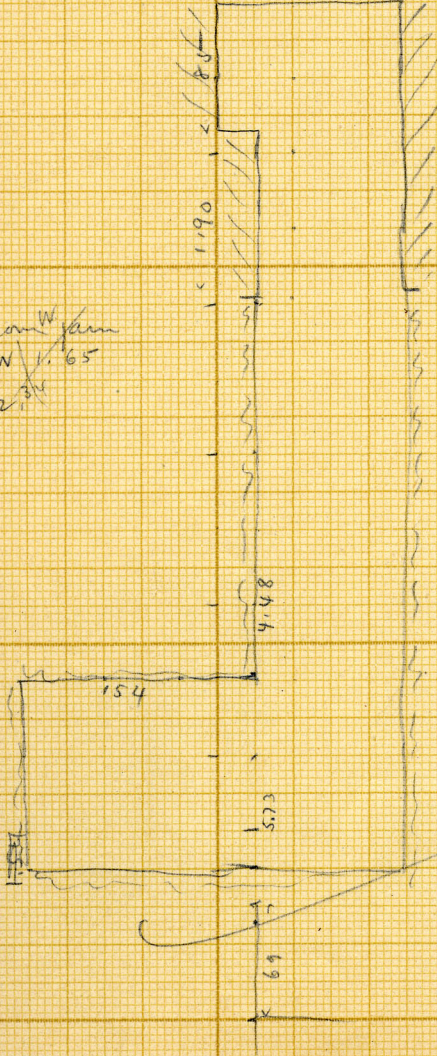
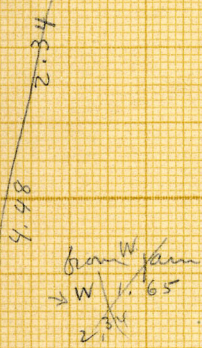
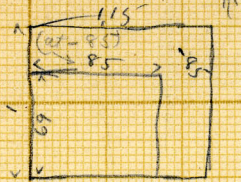
2 Feb 16

G 2094

X

chat 5

Empty
W. wall of
Shaft Ch.
all way down

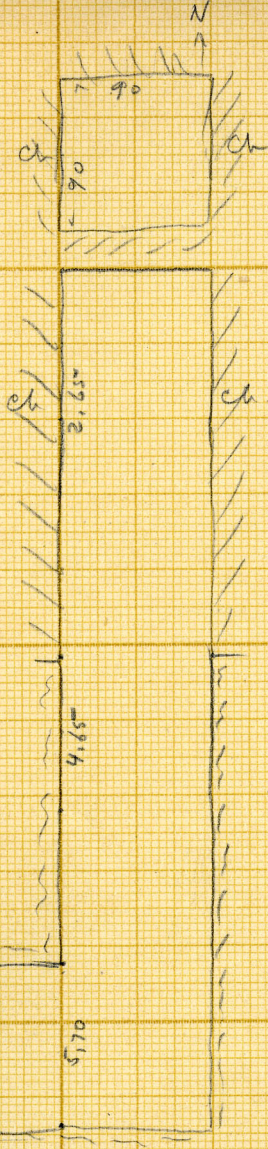


18 May 16

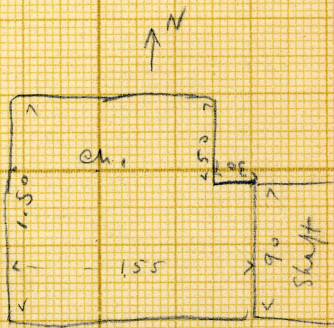
G 2094
B

div. wall
netto
B + C
- 2,40

chat W



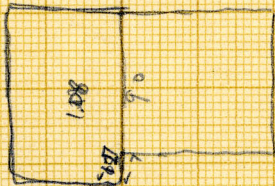
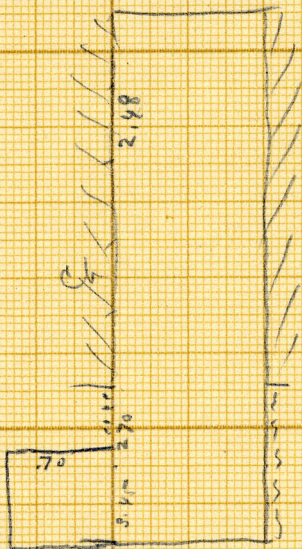
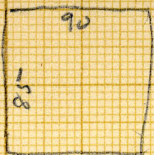
1.55
25



18 May 6

G 2094
C

22

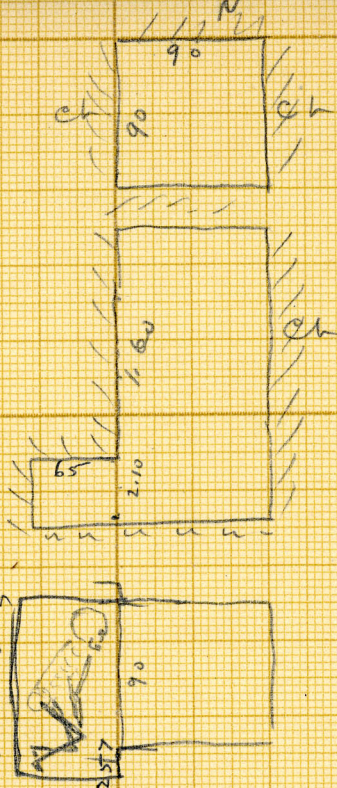


7500

12

18 May 16

G 2094
D



EW
Ch 1.10

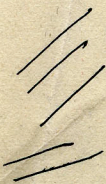
Recess at
W
burial
young adult ♂
on l side,
head N, face E
knees up
arms down

18 May 6

2096
G. ~~3003~~

Is later than 3002 the large dark grey bricks of the latter run through to the north end 3003 in a line of the west face. Similar dark grey bricks have been used in the construction in four shafts of 3003 in the lower courses but the superstructure of the latter is in much smaller brown bricks. This latter superstructure of 3003 was obviously made when 3002 was denuded almost down to its present level. In the above description substituted 2096 is 3003 and 2095 is 3002. 2096 and 2095 are entirely brick.

fa fa




Q 2095

E 75 X

385

mastaba wholly of c. b.

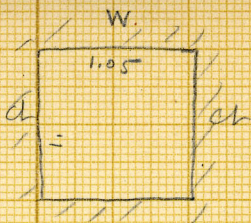
perdat at S. end.

on E face alternate  shafts

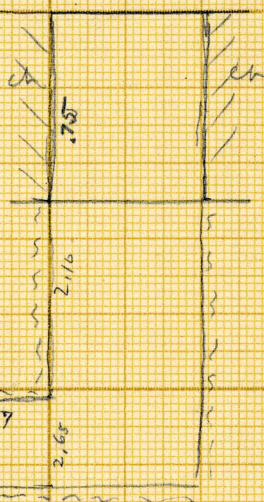
c. b. $10 \times 37 \times 12 (13)$

Maybe 2095 and 2096 built at same time as W. wall runs through. large dark gray bricks.

G 2095
A



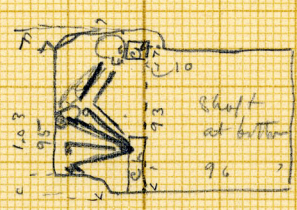
ch at S
Burrhead
adult ♂
Widened teeth
cut; teeth
Sound -
body on l



Side, head
W, face N
knees on a large
mud brick;
head against
half a similar
brick.

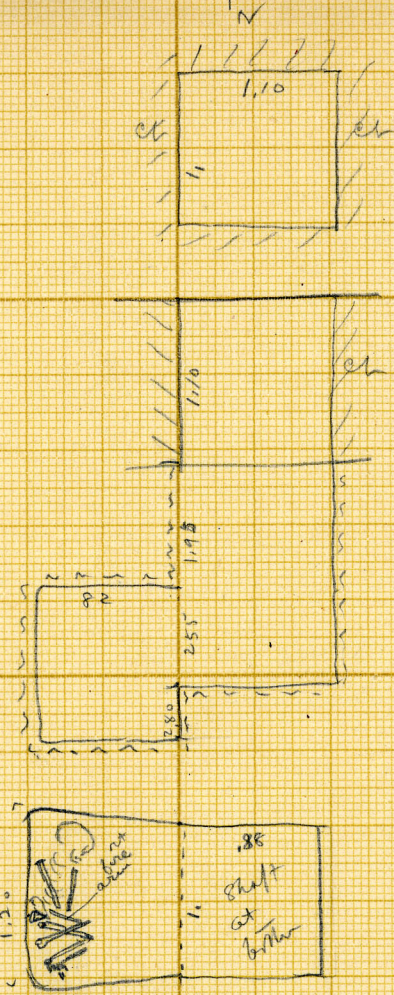


kells up to
hips,
hands down
to knees;
rt fore arm
missing



23 May 16.

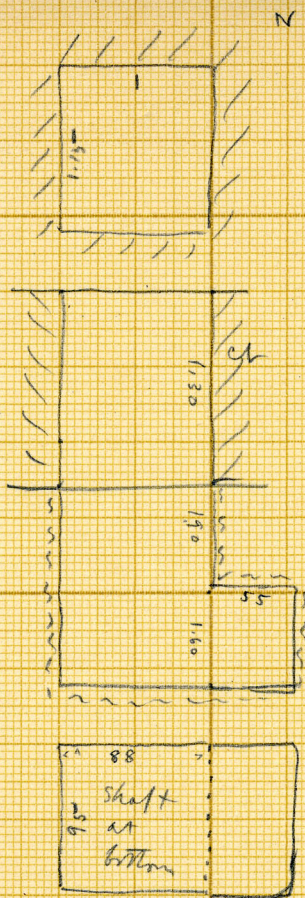
G 2095
B



ch at w
Burial -
adult ♀
contractor on
l side,
head N
bone E
bones decayed
& somewhat
disturbed;
skull broken

23 May 16

G 2095
C

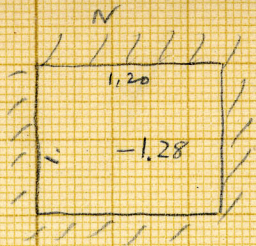


ch at E

Empty.

n. 75

$$G \frac{2095}{D}$$

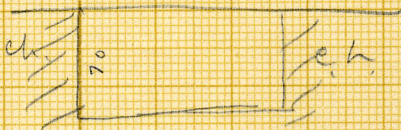
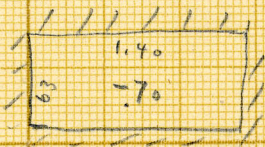


Shaft
in ch



$$G \frac{2095}{(E)}$$

= Serdab



G. 2096: Is built throughout of brick, the lower courses of which are of dark grey, bricks 40 X 17 X 15 while the upper ones are yellowish 32 X 18 X 11 1/2. The offering room is built around an older shaft superstructure the east side of which was destroyed. The bricks in the offering room walls are yellowish grey bricks 25 X 12 1/2 X 9 1/2 to 10 with very thin joints and laid in yellowish sand mortar. The outer angle of the room was rounding off so as to leave wider passage way.

G 2096

latter N = $87^{\circ} 10'$

" E = $83^{\circ} 45'$

room E = $87^{\circ} 30'$

c.b. $13 \times 27 \times 9$ (yellowish)

Built over older wall, which
runs through the N. i.e. of 2095.

upper part repaired with small
light yellow. c.b.

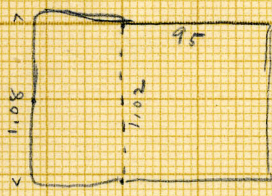
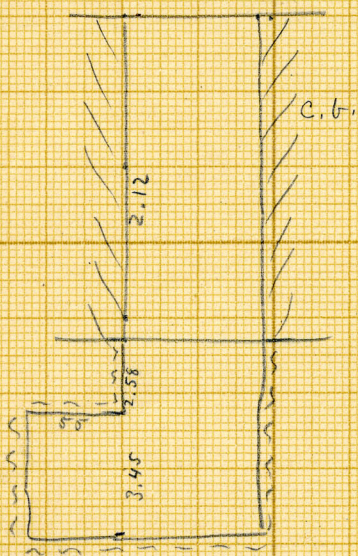
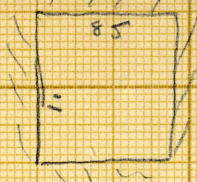
below on $18 \times 37 \times 12$

G 2096
A

N

Chat. E

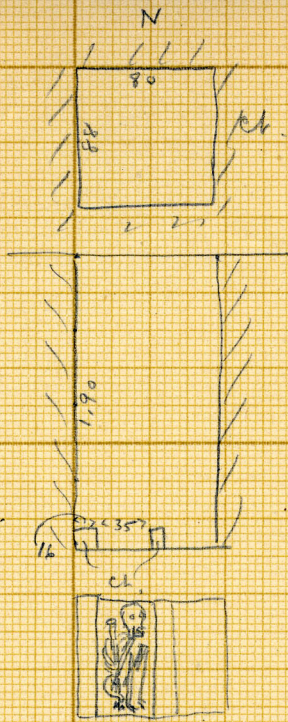
Disturbed
adult burial
skull missing
other bones
in a heap
at N side
ch.



23 M 16

Ce 2076

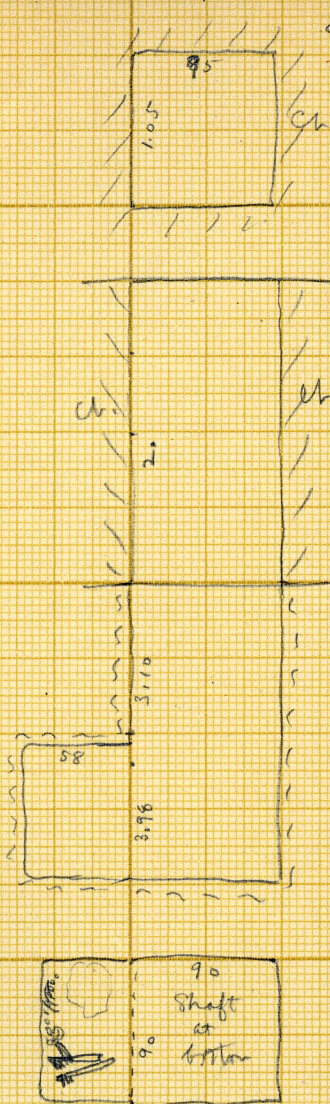
B



Shaft in
ch.
Contracte,
adult
♂ (?) burial
on l side
head N
face E
knees up to
chm
skull crushed

23 May 66

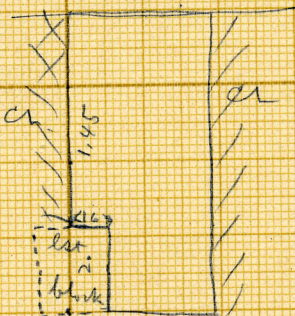
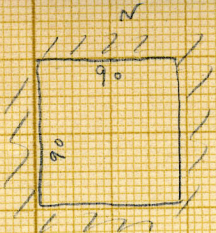
G 2096
c



ch at W

Disturbed
burial -
adult -
skull missing
in place only
vertebrae 3
ribs + leg
bones -
Other bones +
a few bits of
wood in a
heap at
head -

G 2096
D



23 May 16

G. 2097:

Built throughout of mud bricks 35 X 17 X 12 dark grey sandy mortar. The original mastaba contained four shafts C. D. E. F. with two double niches on either side of a single one. This had a large offering room formed at the south by wall connecting the mastaba with 2094. with a doorway in it. Later the mastaba was increased on the east by two shafts A. and B. and a new niched face constructed. The construction of this mastaba is clearly mud brick facings with debris filling. Still later the space in front of the northern niche was made into a small offering room the entrance of which was in line with the new face. This room was plastered with white sandy stucco. Before this room was higher than the main offering room. The offering room was plastered with whitish sandy stucco. This mastaba is older than 2088 which is built against it. (The statement about the small offering room opposite northern niche should be corrected thus:)
The room as originally constructed has the same level as the main offering room. The small single niche is remains of a still later blocking wall of this chamber. The sequence of 2097 should be corrected. This mastaba is later than 2088 against which it is built. The batter being very slight. The batter is very nearly vertical and it is quite possible that the two mastabas were built in conjunction as the debris filling runs through both.

§ 2097

Mastaba rubble & debris
filling with c. b. facing

Shafts C-D-E-F from
part of a later mastaba built
against west of 2088.

In offering room flanks

§ 26-27

* passage outside chamber
beads § 28

In thin chamber

offerings basin § 29

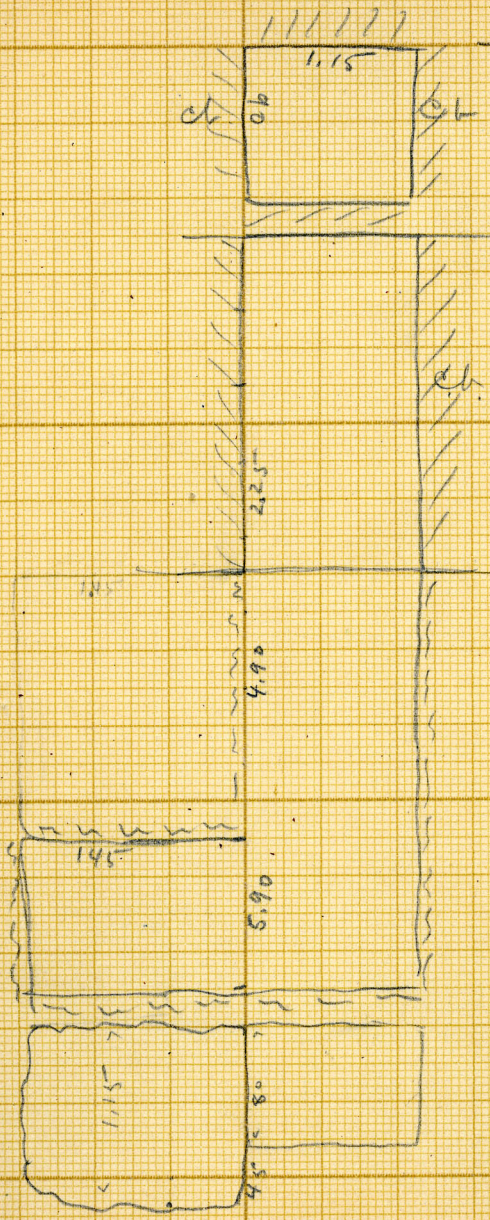
flank

cf. C 42 for view of niche & basin

G 2097
A

W

ch at S
Empty -



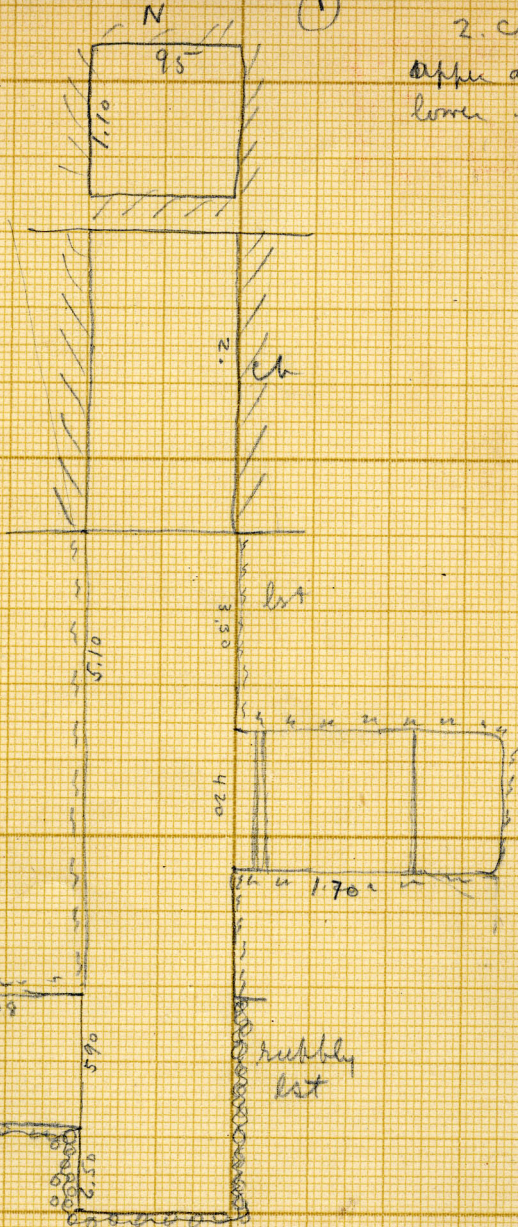
x1. flinte G 34

18 M²/L

G2097
B

(1)

2. chs.
upper at E
lower - W



5.90
6.30
rubbly
lst

rubbly
lst

4.20
3.30
2

18 May 1916

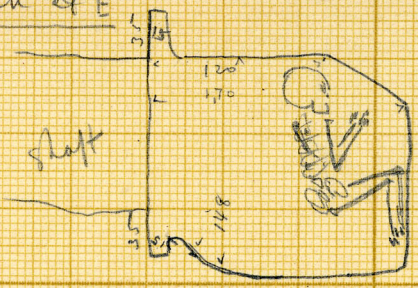
plans of
chs. on sheet 2

G 2097
10

(2) N
I

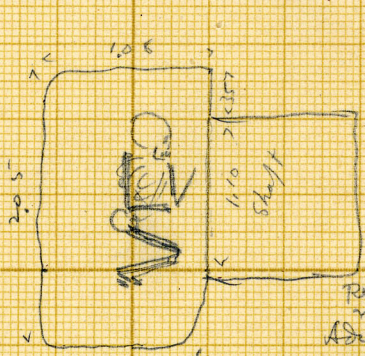
E ch

Upper ch of E



Burial - young
adult male of
teeth - including
wisdom - all sound
legs on l side, head
N face E
knees up -
hands "
Traces of dried skin
on bones.

Lower W ch.

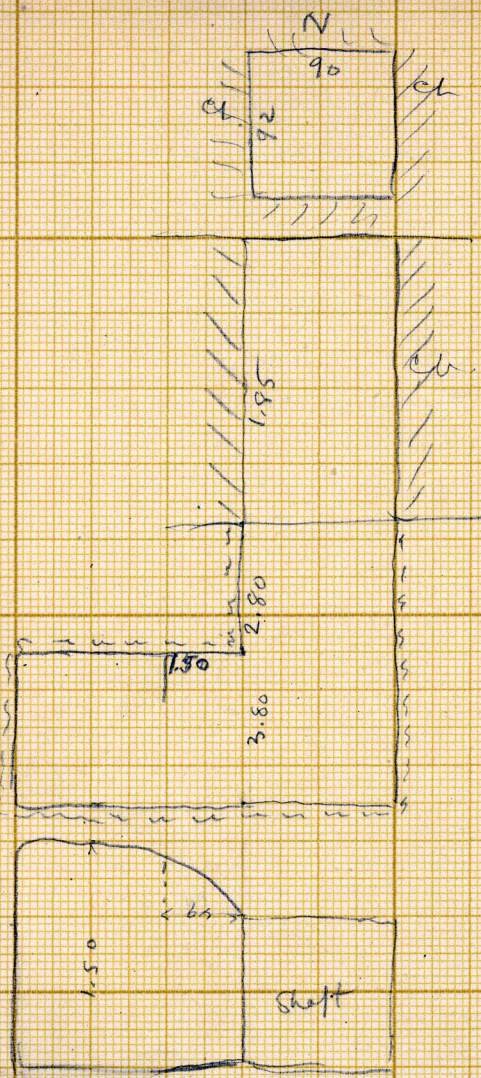


205
> 35
Remains of
modern coffin
Adult ♀
on l side
head N, face E
legs up
l. arm bent at
elbow, fore arm
nearly vertical
(rest of arm
inner E side coffin)
rt arm L on body
bones soft
rt leg quite over l

18 July

G 2097
C

Chatw



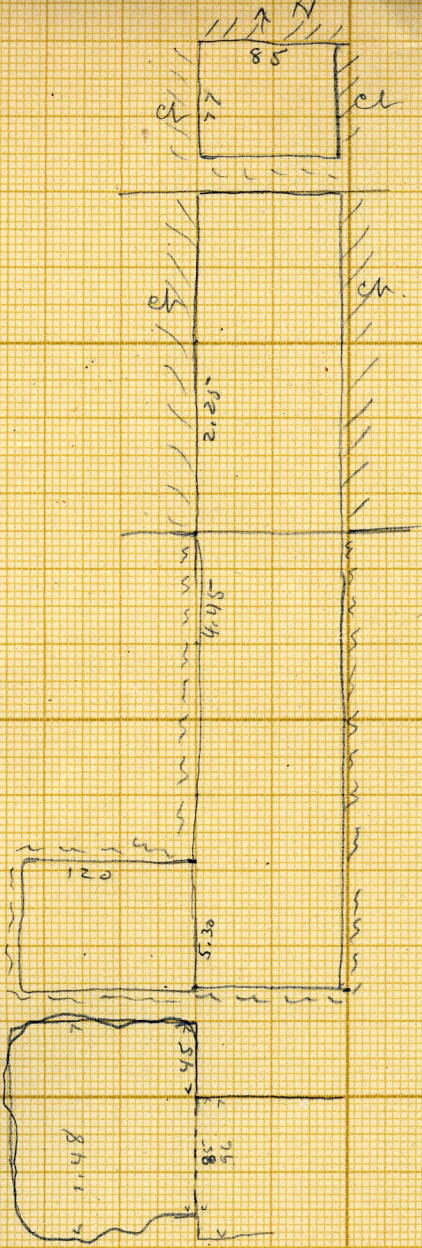
189

18 mg/c

G 2097
D

Chat w

disturbed
burial -
skull
+ 2 leg bones



148

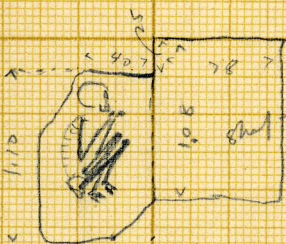
18 May 16

G-2097 ±
E

chatw



Contractor
adult ♀
teeth much
norm
- on l side
head N, face
E
knees + hands
up to chin.

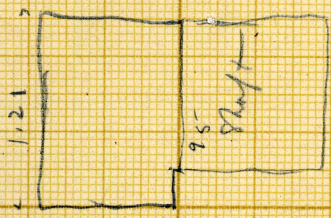
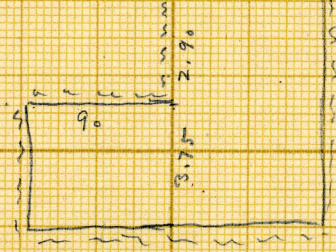
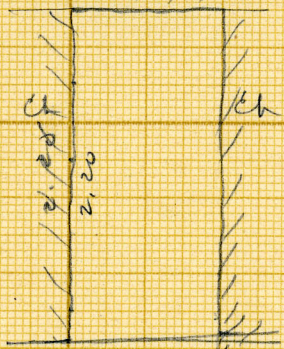
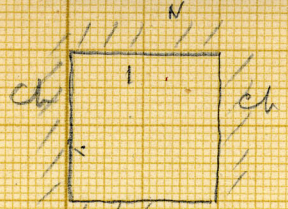


CS M'16

G 2097
F

ch at W

empty
except for
two leg bones.



G. 2098:

All mud brick with upper layers of rubble repair. The east half of this mastaba extended originally only as far as the south wall of shaft D and its face was plastered with mud with white stucco. The bricks are 30 X 15 X 10. The shaft D. is an addition which the north and east walls are of rubble with two small niches on the east face in brick. The west wall was probably built to form the offering chamber of the other half of the mastaba. The bricks of the original mastaba, east half, are dark grey 36 X 18 X 12. The offering chamber between the east and west halves had ribbed vaulting. The niches of the west half were built of bricks mud plastered white stuccoed. The single niches had brick architraves but the double ones had flat stone blocks. Its western half is rubble and debris filled with a brick facing. The later division of walls in the offering room are very roughly built of stones and bricks. The door at the north had been sealed with dark grey bricks 35 X 16 X 13 high. The bricks in the east face and west half are 24 X 12 X 11.

In G. 2098 the lining of shaft A. is rubble and the thickness of the lining in the upper courses extends the full thickness of the wall to the old western face to strengthen the walls around the shaft and an additional facing of rubble was built along the west side. The A. shaft is set askew to the main axis.

2098
= 2089

Ch in wall blocking door = 17 x 37 x 13

In ^{division 7} W chamber of 2098
frag slab G 44 (Phot. C.)

frag slab G 46

basin G 47 (Phot. C. 263/2/1)

In S room basin G 48 = C 272/1
signing father of Runy

In middle room basin G 49
Per-senet mother of Runy
= C 272/2

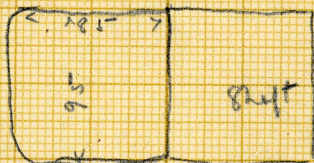
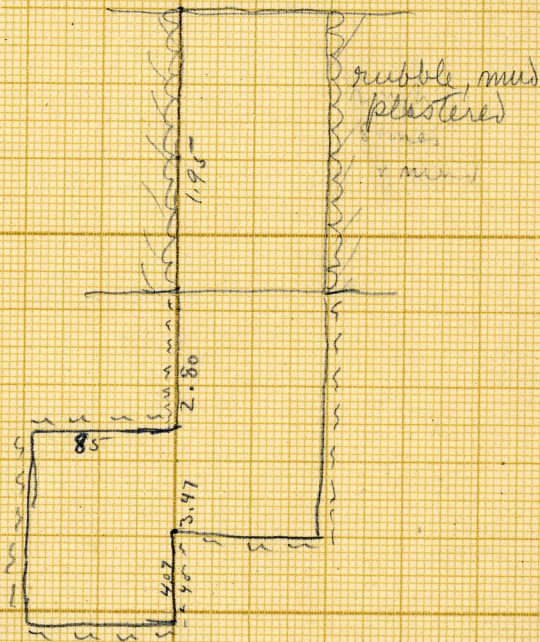
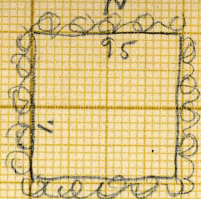
In niche small stuccoed
wooden statuette. C 66

Offering room No. 53a = C 268
53b = C 263/1

In Z basin No 47 = C 263

G 2098
A

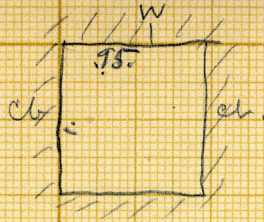
Ch. at W



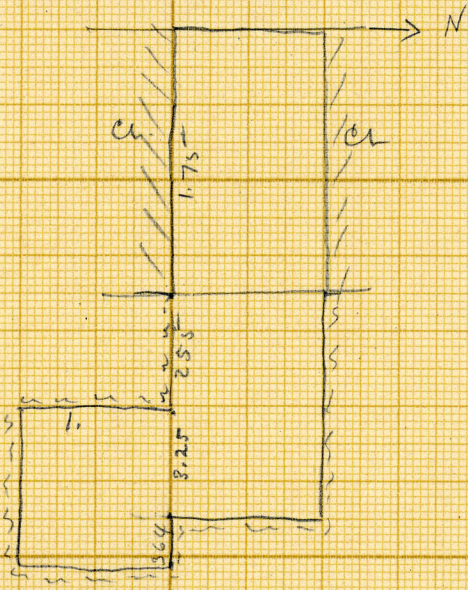
18 May 16

⊕ 2098
R

ch. at S



325
39
364



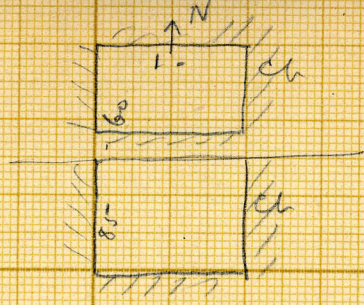
1.33



18 May 16

G 2098
C

No. trial

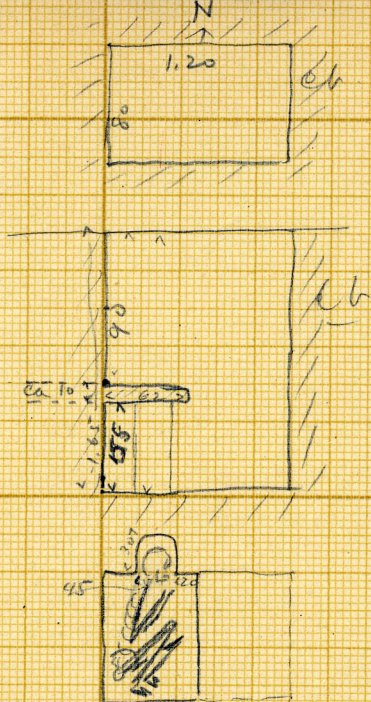


18 May 6

G 2098
D

65

105
90
65



Burial in
Shaft -

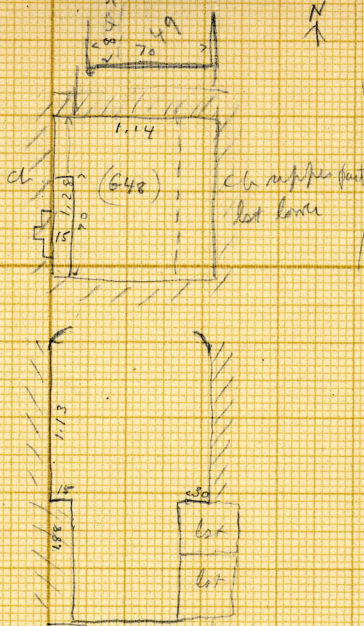
Small recess
formed by
block of
lst. inserted
on W side
Shaft.

Contracted
adult ♂
on l side
to N (in
niche) face
E.
Knees &
hands up to
chest

18 May 6

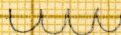
G 48 (in 2098)

X



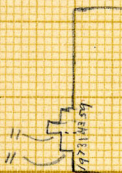
Present N wall
later insert
of ch + let
blocks
lean, spring
.75 h. into
Northward
extension.
h. This wall and
pieces of the
orig. ceiling of
chamber, ch. thof.

□ in plan
vaulted
from the top
wh. it is made
to resemble



Interior originally
ch. stuccoed
color now pinkish
center to center
of U ca 20
c 207

Niche in W wall -
ch. stucco plastered
stone lintel -
ht 85



G 49 (N of 48)

48-49-47 -
orig. - ~~habes~~ vaulted
offering chamber
in front (E) of niches -
49 made by filling
in passage with ch
walls in wh. it are
used □ blocks for
the original ceiling
of the offering ch.

see next sheet

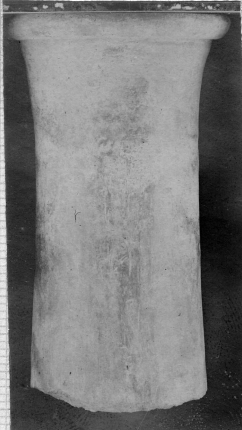
19 May 16

9
2098
Chemist 2,



No 46.

blacks more.
red soil.



G 2099

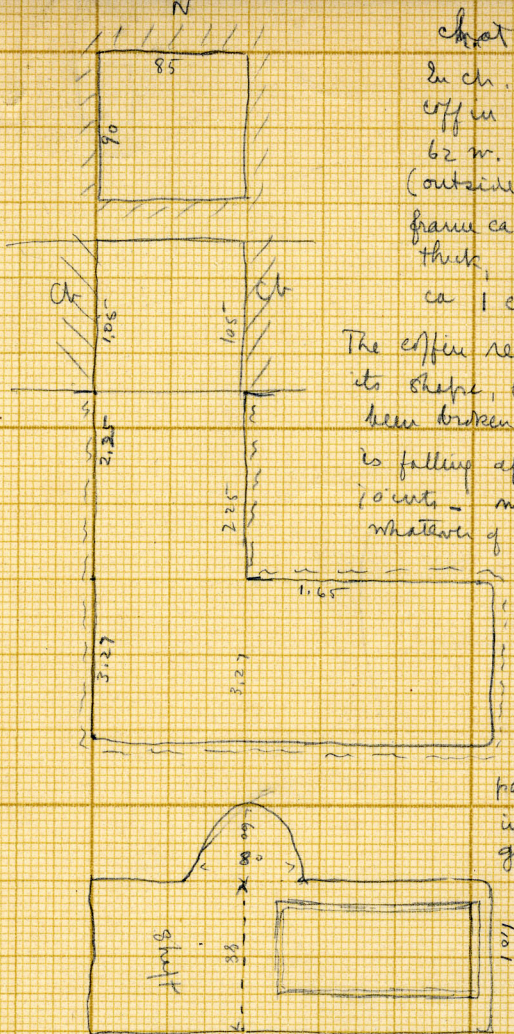
A
Montaha
All c. b.

chart E

In ch. modern
effie 1.24 l x
62 m. x ca 57 h.
(outside dimens.)
frame ca 3 cm
thick, panels
ca 1 cm.

The effie retains
its shape, but has
been broken open +
is falling apart at the
joints - no traces
whatsoever of body.

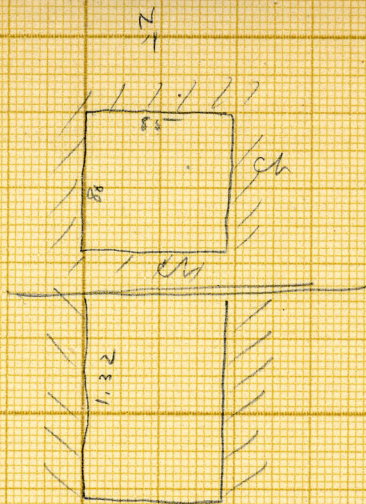
joints
fastened
as usual
with
modern
pins -
panels held
in place in
grooves.



19 May 16

G 2099
B

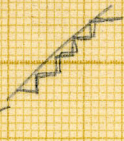
Shaft



19 May/6

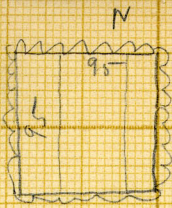
G 1223 (Ruiner)

hammer

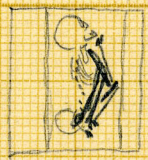
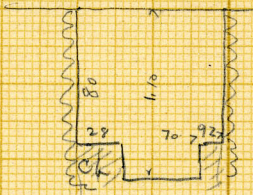
stone casing  = 73° 10'

$$\frac{G(\pi)}{E}$$

Pit in
mud

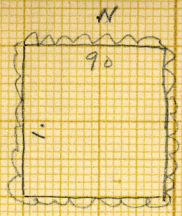


(A-B-C-D
in Dr. Reisman's area)

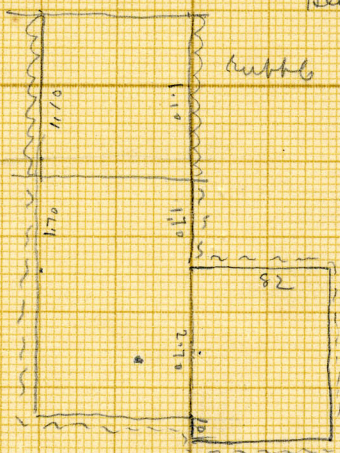


26 Myls

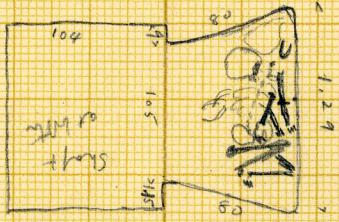
G (II)
F



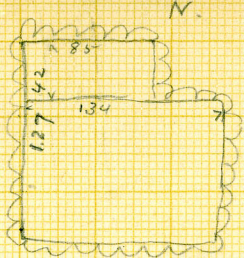
Ch at E
Bumal-
adult ♀
contracted on
l side, head N
face E
Head on stone



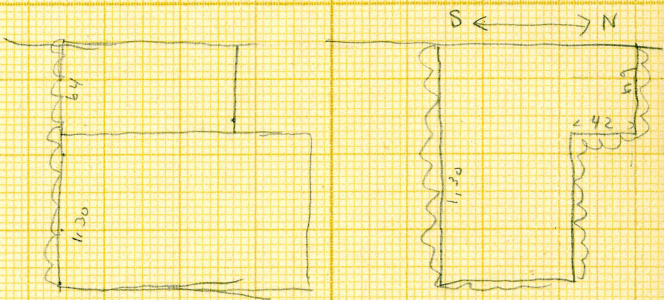
bubble
Skull rolled
back;
finger bones of
both hands
at knels
l upper arm
under body,
rt upper arm
fallen from
shoulder,
subs joint
side fallen
out of place



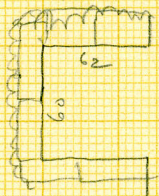
$\frac{G(I)}{G}$



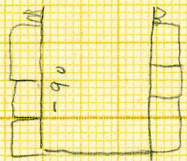
pit in rubble

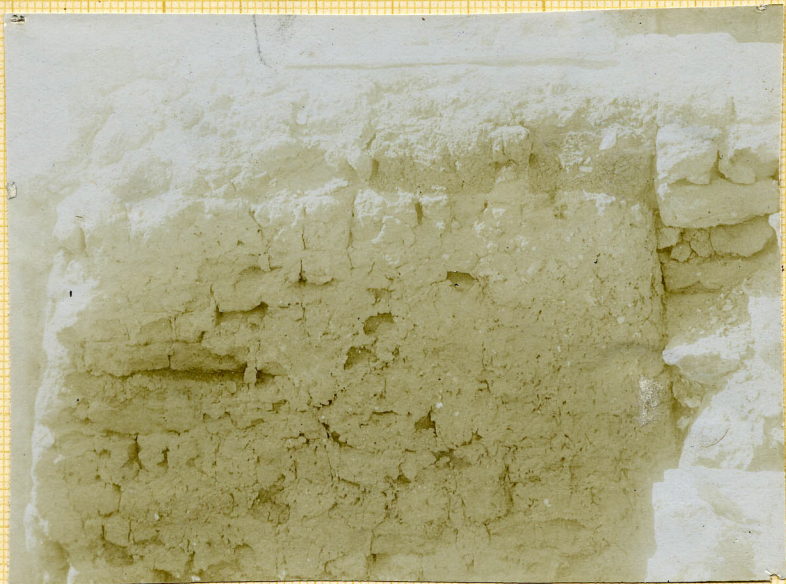


$\frac{G(II)}{H}$



N
rubble on
left blocks

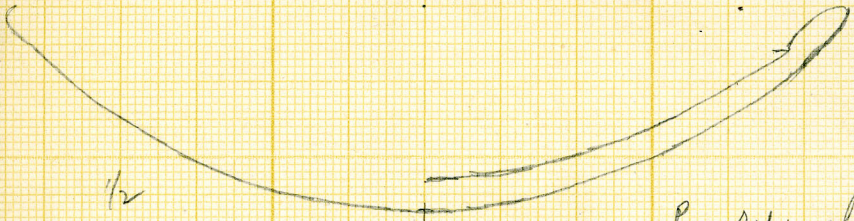




A9

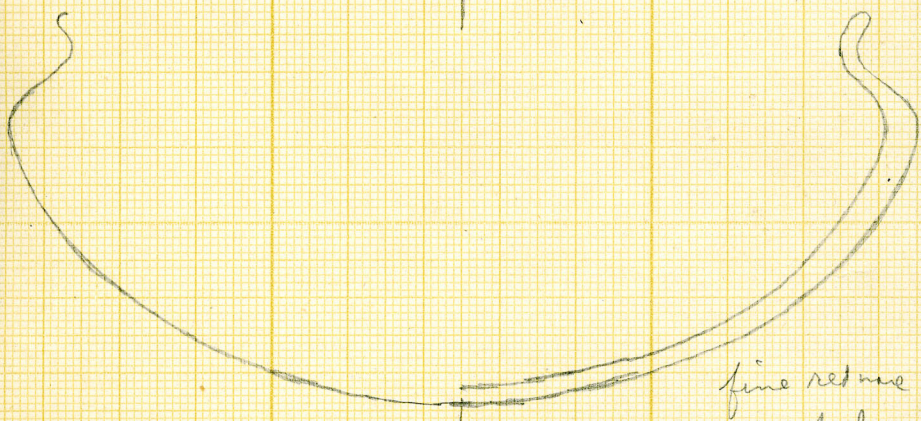


3000 - 3070
x



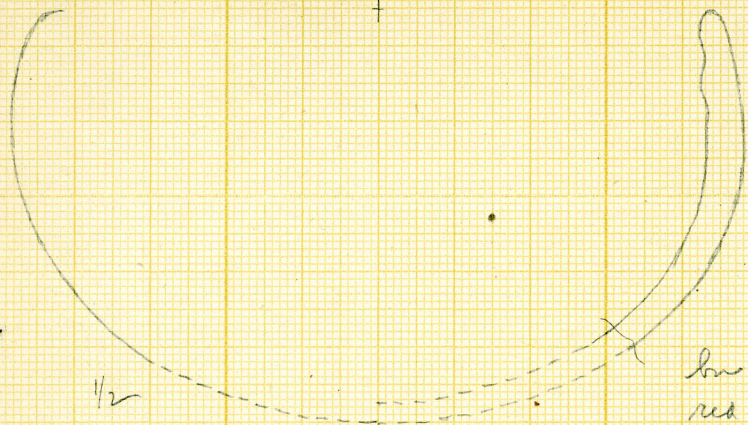
1/2

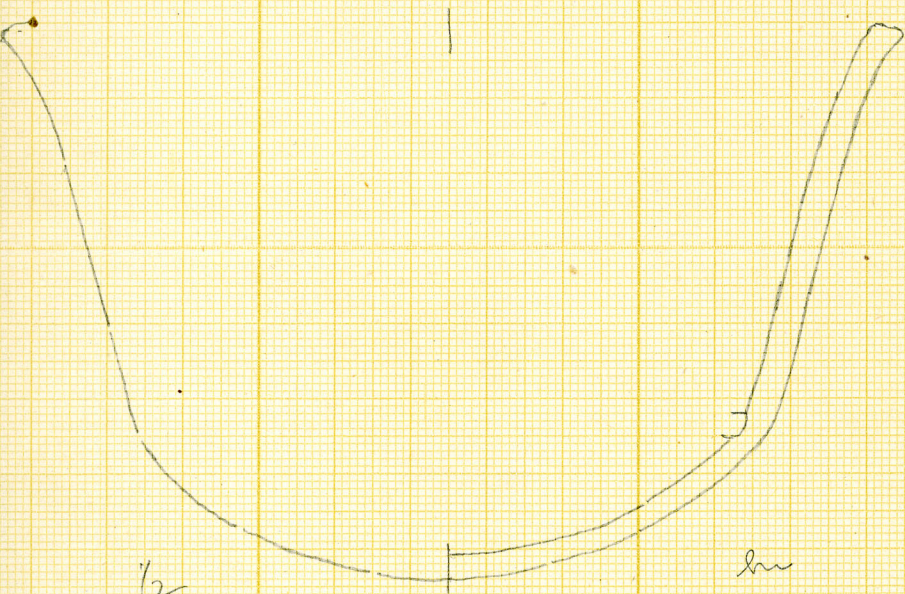
low red mesh



fine red mesh
red pol

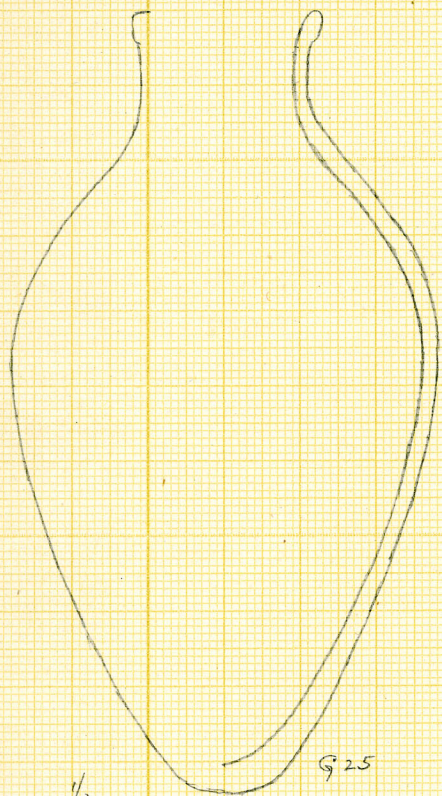






1/2

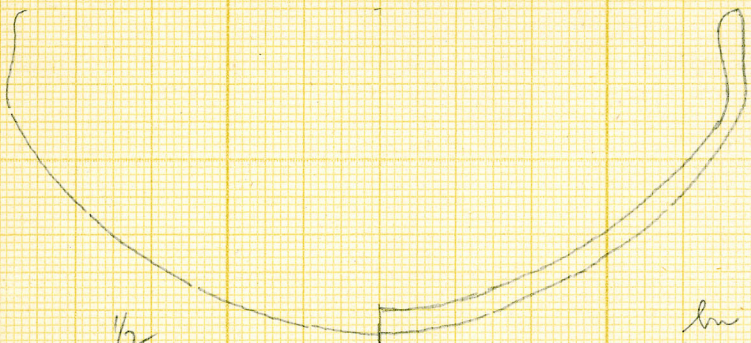
ln
res pol



1/2

925

red. cream surface



hr

hr
red pol

