

2036:

Debris filled with rubble facing and with mud brick outer facing which runs round entire structure including south addition. The original stone core, however, includes A and B, the upper parts are 36 X 18 X 12 and in the lower part 28 X 13 X ~~19~~.

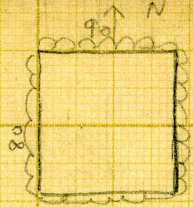
9

G. 2071:

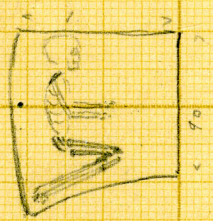
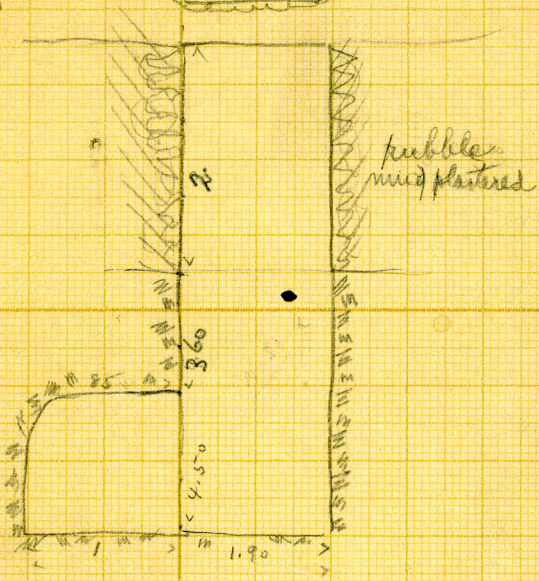
Is rubble filled, stepped facing.

G 2071

Rubble filling
stepped lat
facing

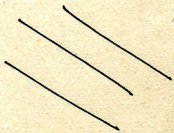


ch at W
Burial of
adult male
lying on l
side, head
N, face E.
left arm
under body
knees drawn
up.
Body on layer
of fine sand
Wisdom teeth
not through



G. 2072:

Mud brick core, the division wall between shafts rubble only. It is built against 2073.

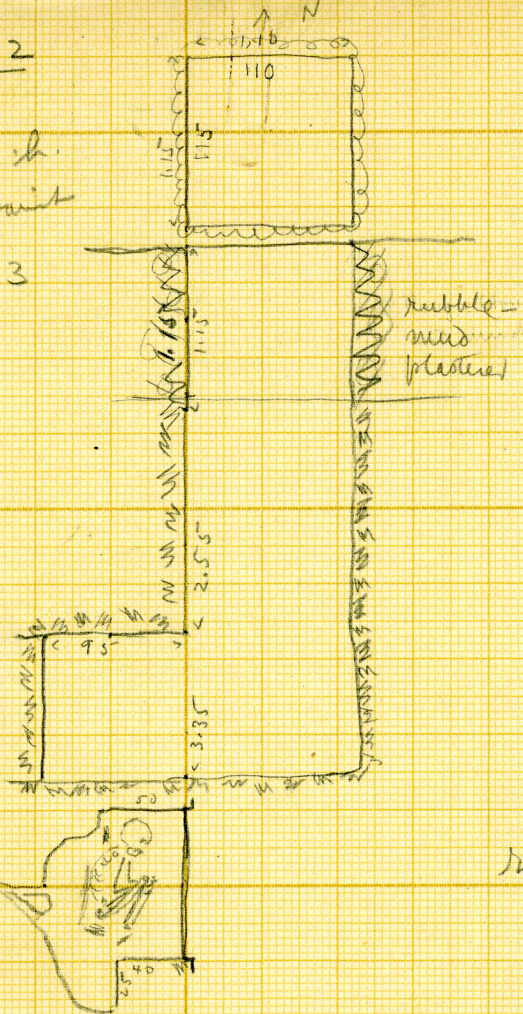


G 2072

A

all. c. sh.
built against

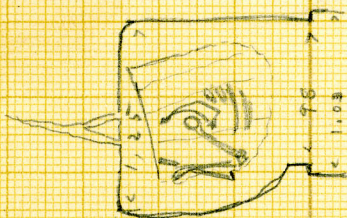
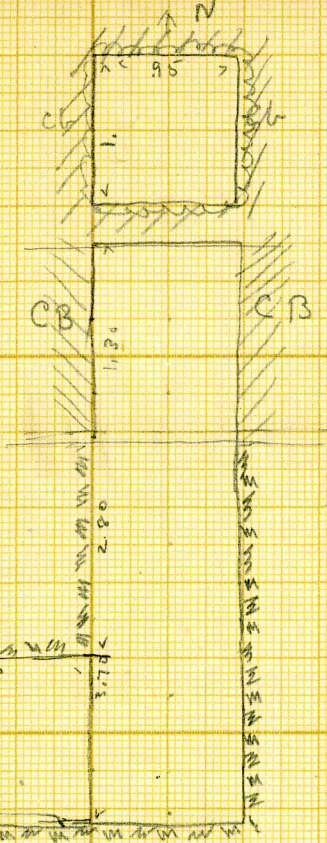
2073



Ch at W
Burial - elderly
adult female
on l side
head N, face
E
Remains drawn
up opposite
beast
Remains of
wooden box

rubble, mud-plaster

G 2072
B



ch at W

In ch. remains
of wooden box
at least 90
l.

Leg bones, a few
vertebrae, + ribs
of an adult

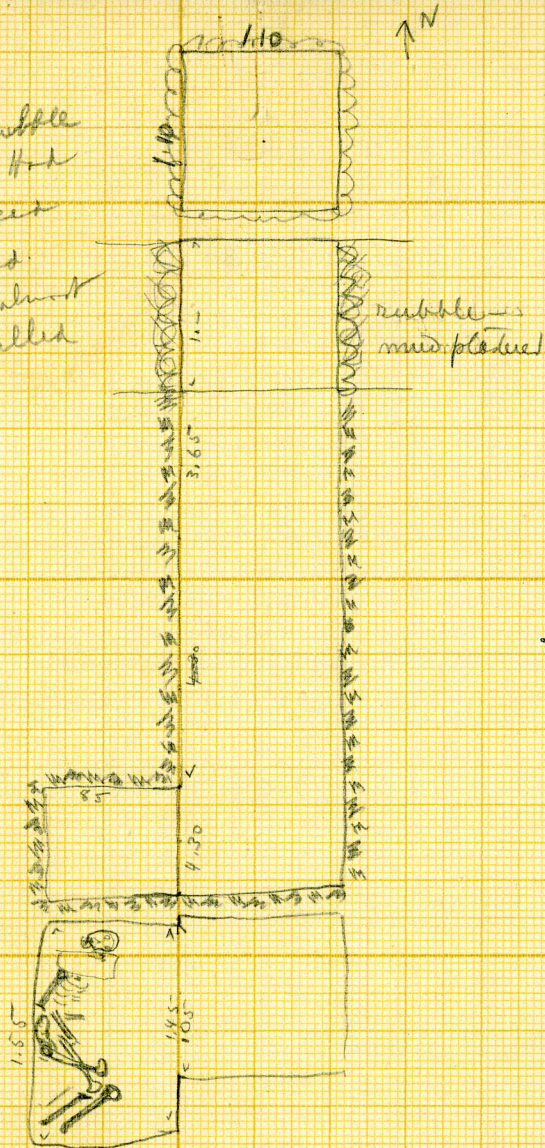
G/ 2073:

Rubble, debris filled, rubble faced core, stepped facing. The X shaft at north is earlier than this mastaba and a fragment of the rubble facing of the shaft is left at south over which runs the stepped facing 2073. This shaft may, however, have belonged to this mastaba and the smooth stones above its south face may be a reconstruction of the enclosing wall in reuse including only A to C. This mastaba is, however, much older than 2074.

G 2073

A

Coarse rubble
filling. Had
been forced
and covered.
Lst. bit almost
entirely pulled
off



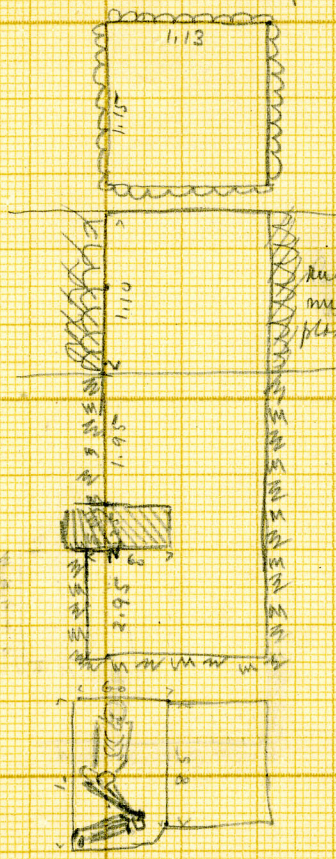
Ch at W

Burial.

adult male
on l side
head N, face E
knees drawn
up at Rt to
to body; hands
at knees.

A bit of cloth
adhering to
vertebrae.
Head rested
on a stone -
from which skull
has rolled off.

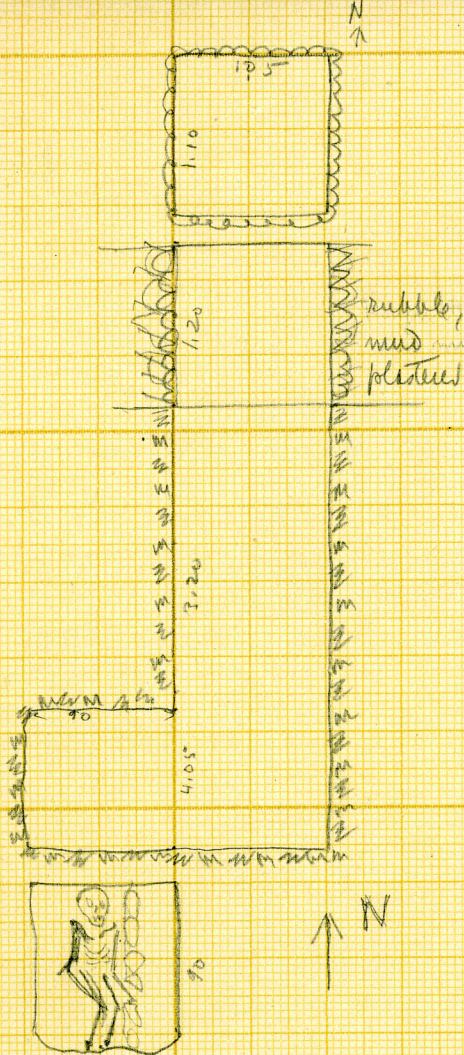
G 2073
B



ch at W

Burial - adult
male, trunk
almost on back
(slightly on l. side)
legs on l. side -
head N, chin on
breast, face S
Knees bent, lower
legs at rt 45
to body.
Arms - as shown
Inserted block
forms roof of ch.

G 2073
C



Ch et W

Burial - adult
male - teeth all
round -
on back,
head N, face up
knees drawn up
in air, feet
pressed against
S side ch.
rt hand orig
up on rt
knee; l. hand
out at S side.
Line of rough
stones along
E side of body.

G²⁰⁷³ between

X 2073 + 2074

South face of 2074

N wall of 2073

traces of
mud plaster

width 1 m,
above E-W
in den of shaft X

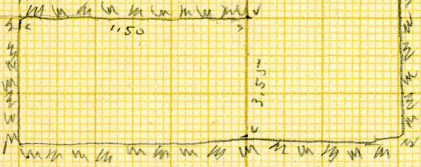
S wall of 2074 -

2 courses (80 cm)

Squared lat
blocks - resting
on a 20 cm

layer of mud -
width 1 m above

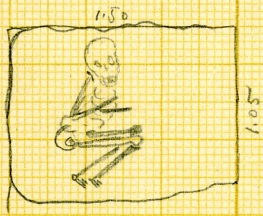
E-W. sides of
shaft X



ch at W

Burial - young
adult male
all teeth, including
wisdom - sound.
lying on l side
head N, face E
knees drawn up
to hips

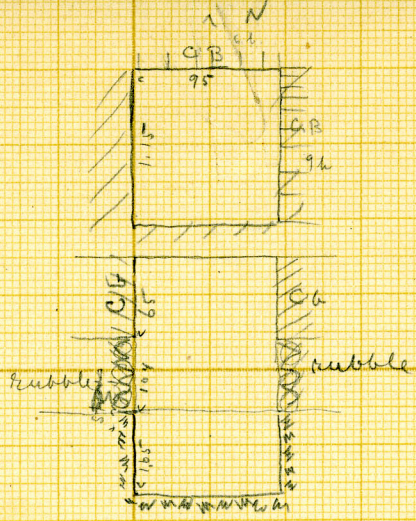
At bottom of shaft
S wall, lat. stratum
~~was~~ imperfect -
a hole here patched
with a wall of
small rough stones -
1 m h. & almost
entire width of
shaft from SE corner.



G.2074:

Brick core, coursed battered face.

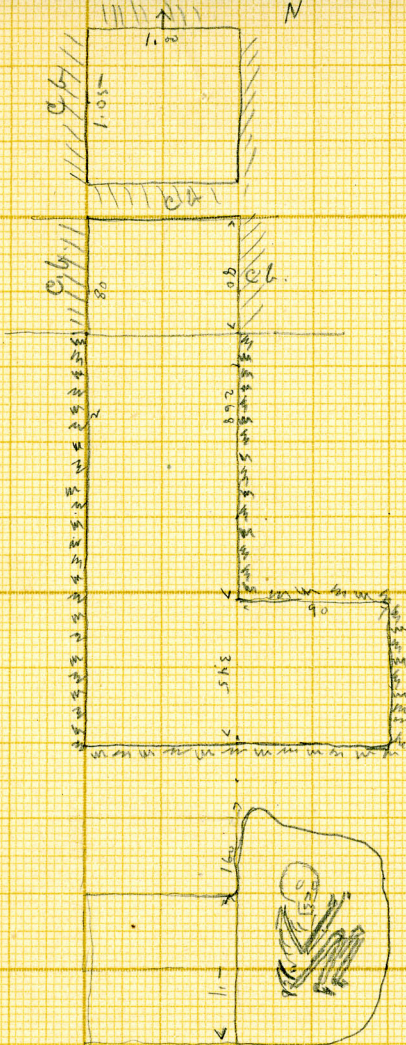
G 2074
A



No ch.

C.B. filled
stepped facing

G 2074
B



ch at E

Burial - elderly
adult male -
teeth much worn -

on l side, head

N, face E

hands up to

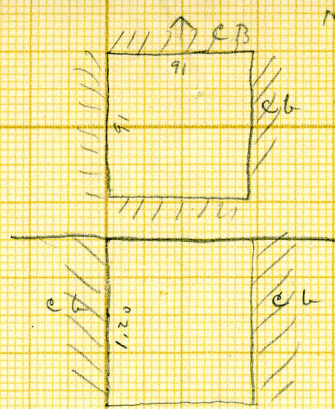
l shoulder,

knives opposite

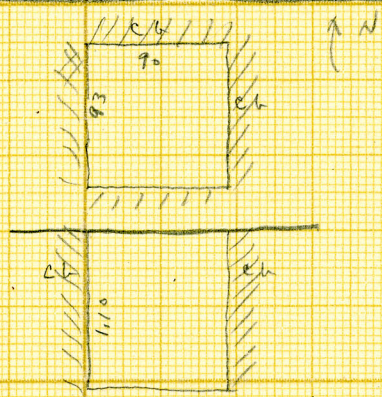
breast, heels

up to hips.

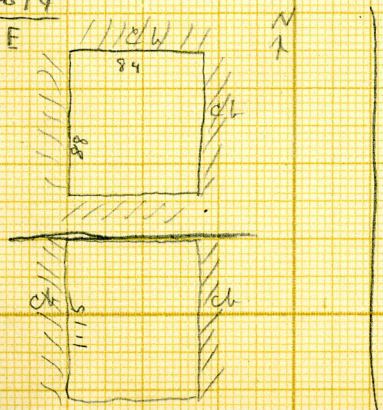
G 2074
C



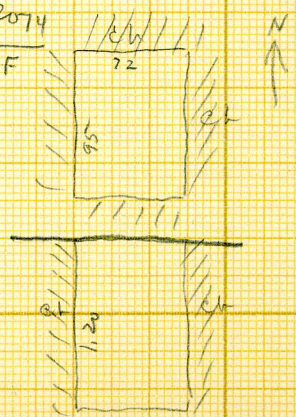
G 2074
D



G 2074
E



G 2074
F

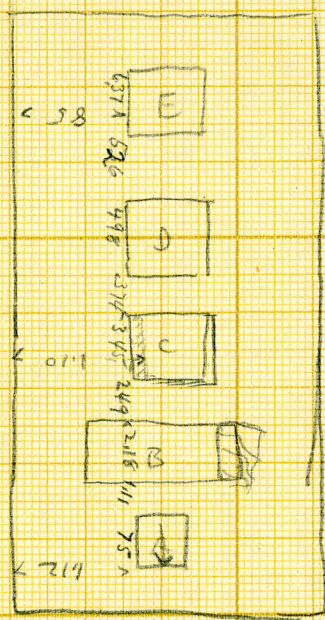


G. 2081:

This is mud brick, ~~the east face beyond~~
the east face beyond the second double niche was later restored
with a stone facing in which was a double niche in one block.

G 2081

Location of shafts C D E
N ↑



W side of shafts
 A-D-E
 in line
 In C W side
 of shaft is
 .25 to E of line
 In B W side
 is 1/2 W of line

2 Feb 16

§ 2081

all c. b.

repaired at N.E. C.

batter

$$W = 85^{\circ}30'$$

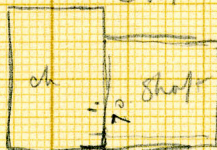
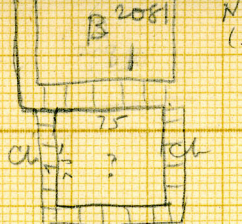
with lat.

$$E = 85^{\circ}15'$$

$$c. b. = 18 \times 42 \times 14$$

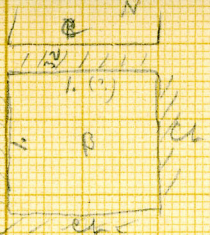
G 2081

A

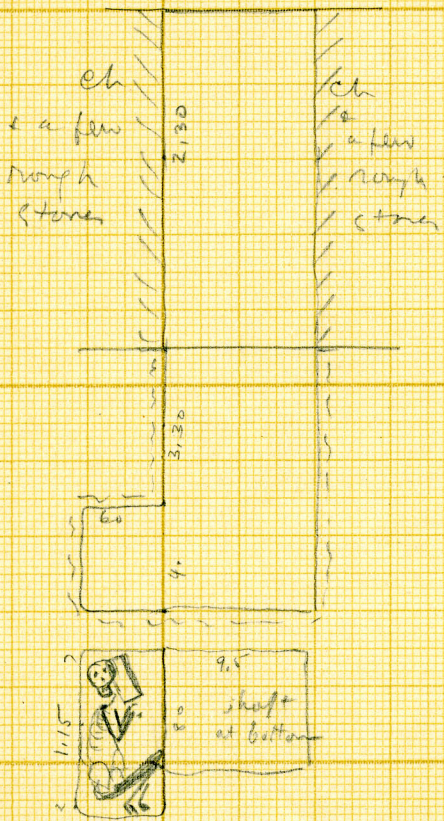


18 May 6

G 2081
B



Shaft -
ch at W
E & W. sides, shaft
in c.b. at W
broken away,
with prov. ca 1.

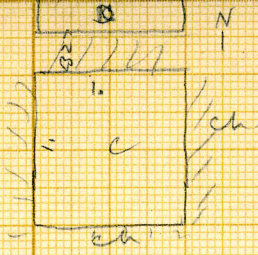


Burial young
adult ♀ on
l side, head
N, rest up on
a large c.b.
(39 x 18 x 12)
knees drawn up,
hands up before
breast -
skull fallen
back -

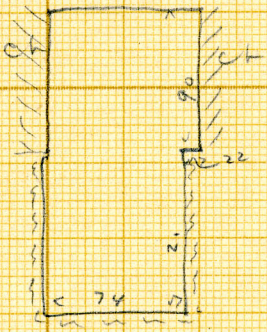
18 May '16

G 2081
0

not on plan



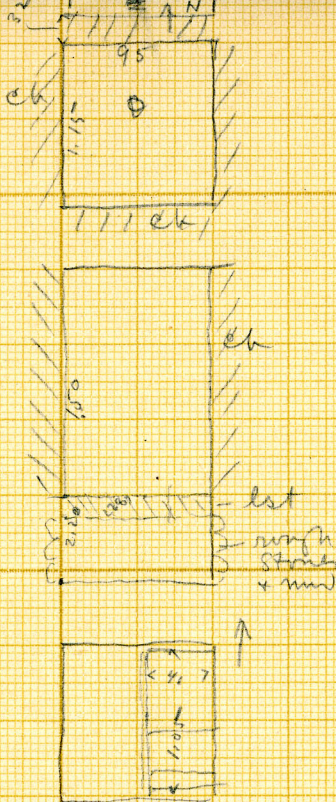
Shaft
empty



18 May 6

G 2581
D

not on plan



Shaft
gone at
bottom -
covered
with lat
slabs -
one pulled
off - free
empty.

18 May 16

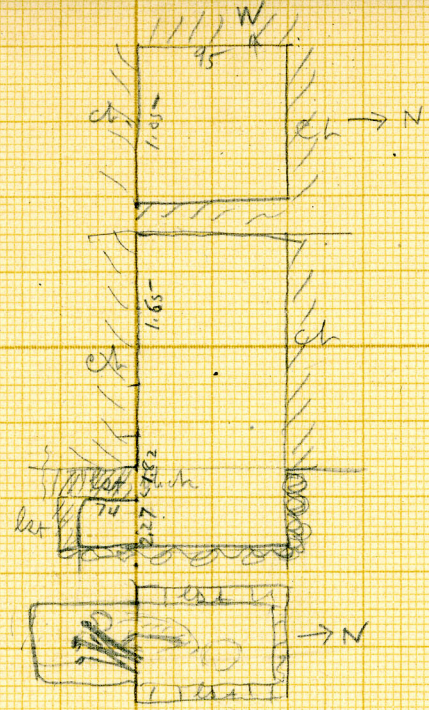
G 2081
E
as in plan



Small Ch at W

Burial -
young adult ♀
upper part of body
on back, head
N, face up -
lower part of
body, from hips
down, on l side
knees up, upper
legs not quite
up to rt E with
body -
l. arm straight
rt hand on
pelvis

G 2081
X



shaft
 disturbed
 burial
 adult
 contractor
 on l side
 head N-
 face E
 bones up to
 breast

45

18 May 16

2082:

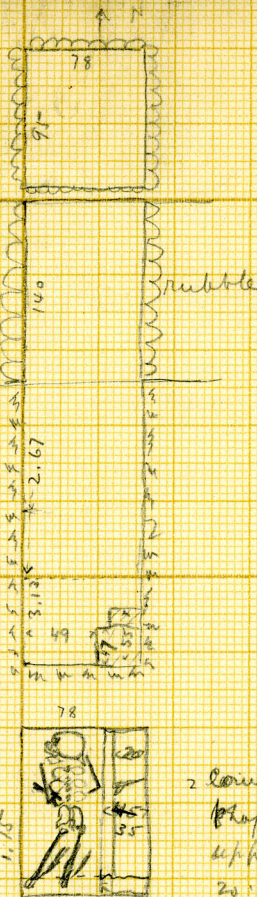
Rubble and debris filling, stepped facing, the offset at south end of west face is the jamb with vertical face of the offering room of 2081 and is probably a part of the reconstruction of 2081 the same as the north end of the offering room.

G 2082

A

Rubble filling
stepped bet. facing

S side of shaft
undercut 20 cm to
ht. 50.



No chamber;
burial in
bottom of shaft;
adult female
on face, head
N. The body is
clear, lay
originally on left
side; facing W.

2 courses bet. blocks on E side of
shaft at bottom. Lower 47 h
upper 8 high; width of upper
20; over all 55.

human brain 78 x 55. prob from
here - C 32)

G

2082

A

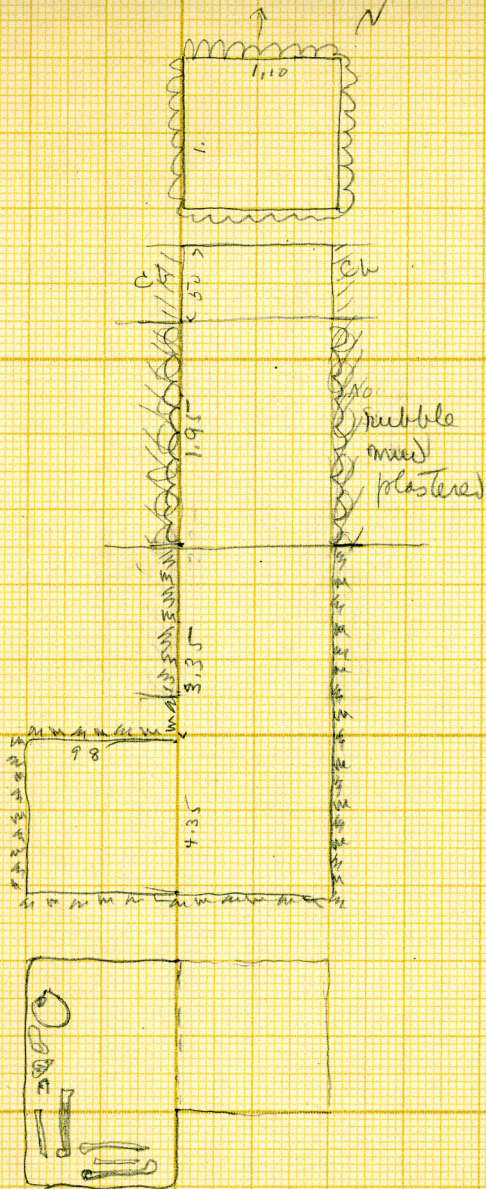


A 452



G
-2082
A

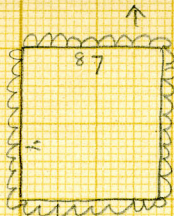
G 2082
B



ch at W
disturbed
bruit.
adult-

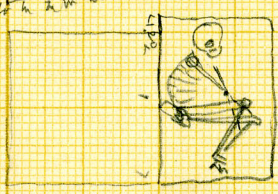
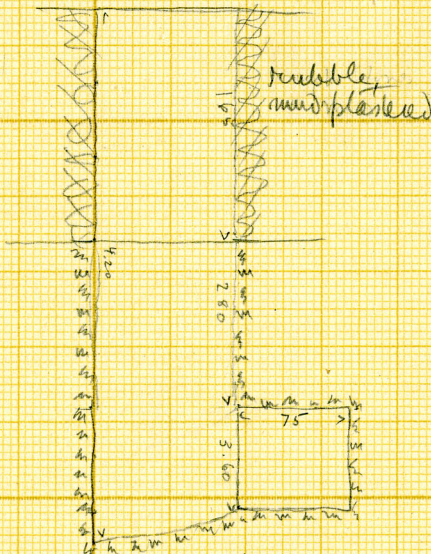
14 May 16

G 2082
C



Ch at E

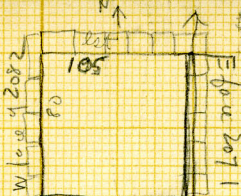
Burial - adult
male, on l side
head N of o E
knees drawn
up - upper legs at
rt to body -
hands to knees -
Skull fallen forward
on face



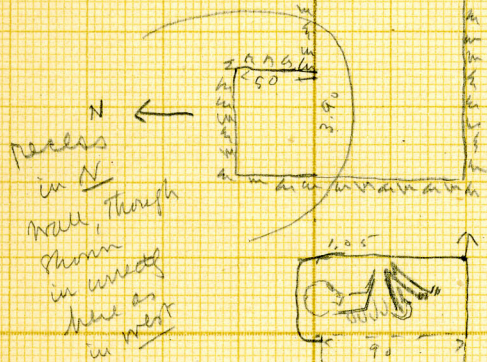
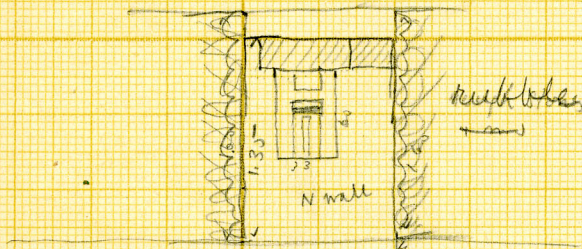
14 M/16

G in passage
 2082 between
 2082 + N
 X end of 2071

not on plan



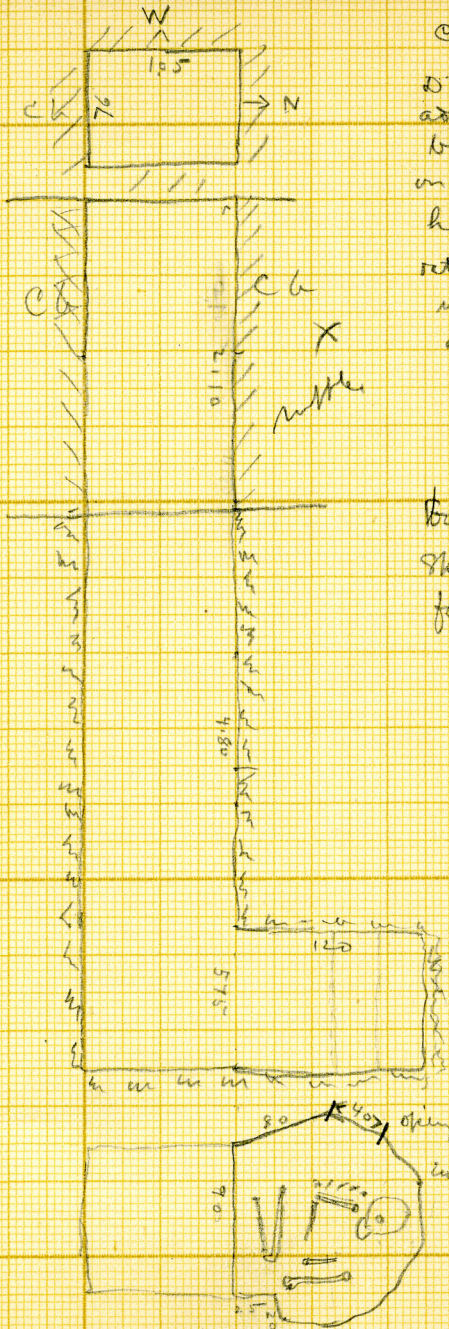
recess
~~at~~ at N
 Burial -
 about female
 on l side -
 head W, face N
 knees drawn up -
 upper legs at
 rt h to body -
 hands at knees



G. 2084:

Mud brick faced with dark grey bricks 37 X 19 X 11
The south west angle appearing in the offering room of 2086. The
mastaba 2083 which includes E. and F. is built against 2084. Later
2089 including B. & C. of rubble was built against 2083. Still later
the whole structure as far as the south face of 2084 was reconstructed
as one mastaba inclosing ^{the} new areas A. on the south as a larger area.
This later addition was wholly in rubble, the structure of 2083 E. &
F. was wholly mud brick. The enlarged structure was faced with
battered masonry roughly dressed of which only the west face remains

2089
 G 2080
 B 2083
 210
 482
 575

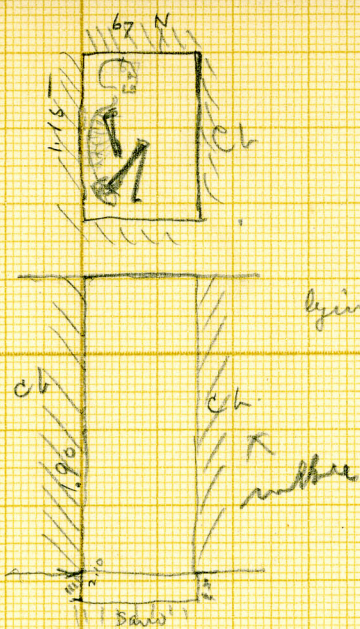


Chat N
 Disturbed
 adult male
 burial -
 on l side
 head N face E
 set leg drawn
 up - upper leg
 at rt 15 to
 body; bones of
 l. leg moved
 to front of breast
 body lying on sand
 skull fallen
 forward on top of

15 M, 16

2089
 G 2080 3
 C 2083

(and) on
 plan
 but see
 shaft
 W of E
 in passage

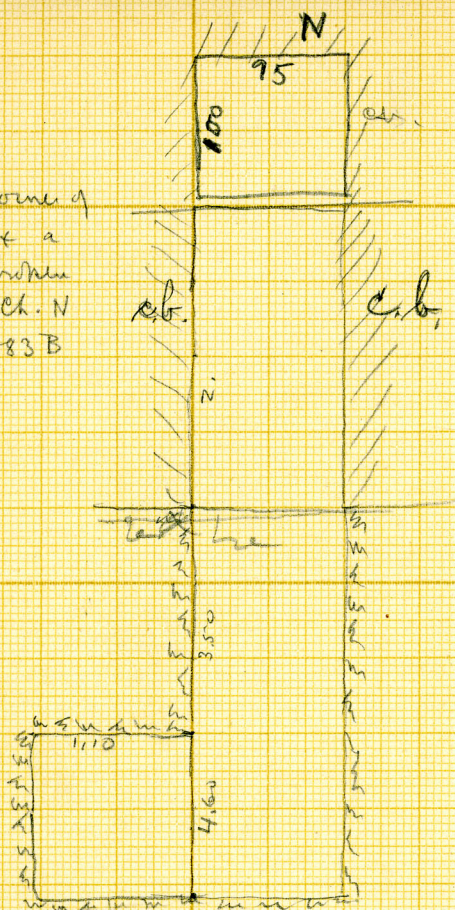


Shaft burial
 adult male?
 on l side
 head N
 face E
 knees up -
 lying on layer of sand

15 July

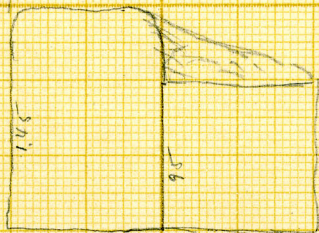
G 2083
E

At S-E corner of
Shaft a
hole broken
into Ch. N
of 2083 B



Ch at W

Empty
except for
two frags of
leg bone.

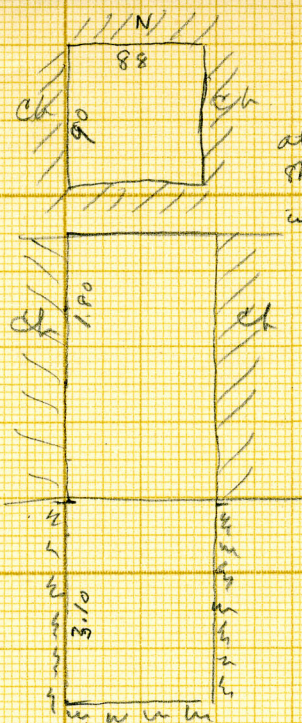


shaft breaks under
at bottom -

15 M 76

G 2083
F

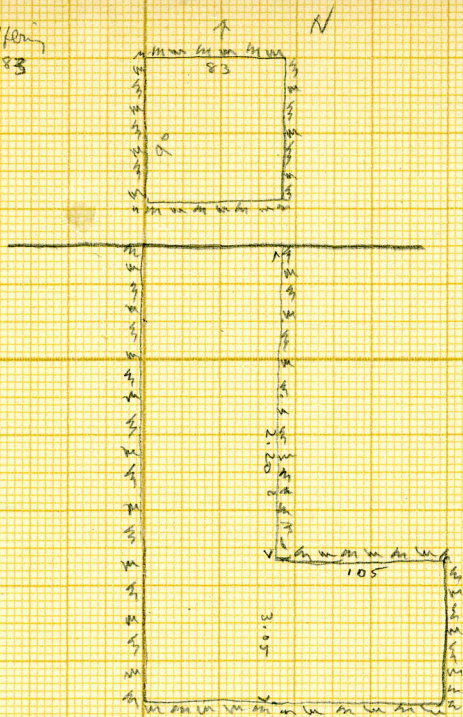
Shaft
Supt



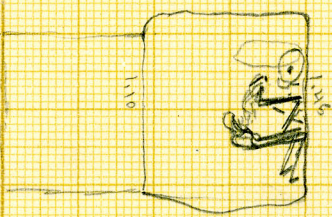
at bottom
Shaft 75x75 cut
in lat. "gebel"

15 M/L

2080 2089
 G shaft in opening
 of 2083



ch at E
 Burial -
 young adult
 male, on l
 side, head N
 face E,
 body lying on
 thin layer of
 fine loess chips
 on sand; head
 resting on stone
 knees drawn up
 upper legs at
 right to body,
 arms as shown
 Skull rolled over
 face down

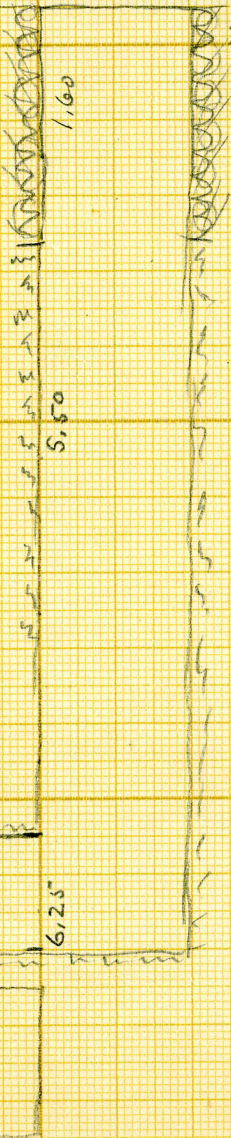
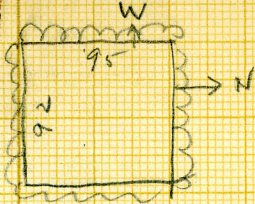


2084:

Rubble filled on east face is a deep recess left to form an offering room. The mud brick niched face along east face is later and concealed the offering room leaving the recess as a sort of serdab which may have been the original intention. The offering room was built against this. All shafts lined rubble.

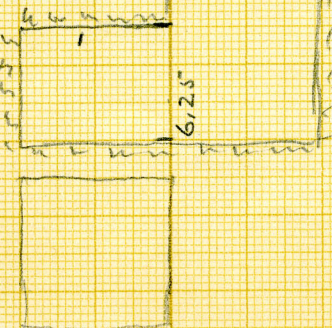
G 2084
A

Chart 5



rubble
mud plastered

NS
1 x 1.02; ht 80



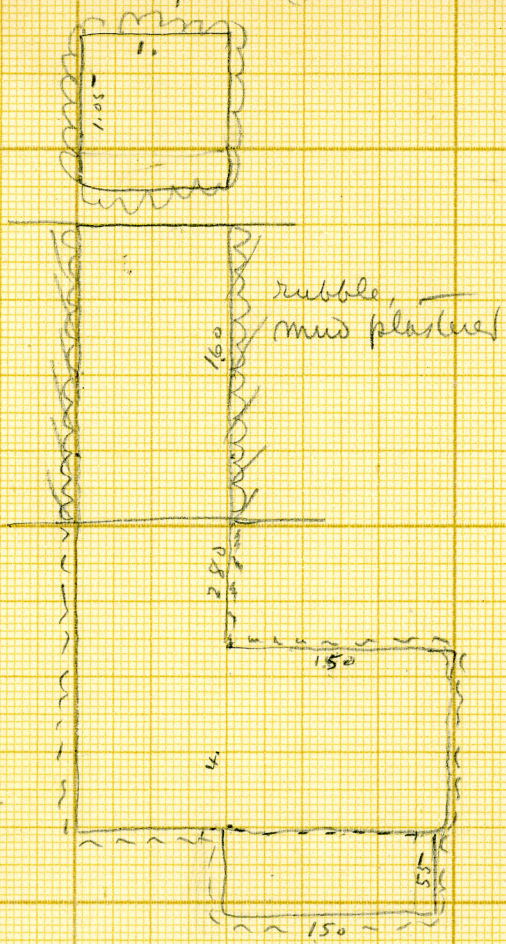
15 May

G 2084
B

W
↑

(1)

Chart M



2.50
1.65
1.05

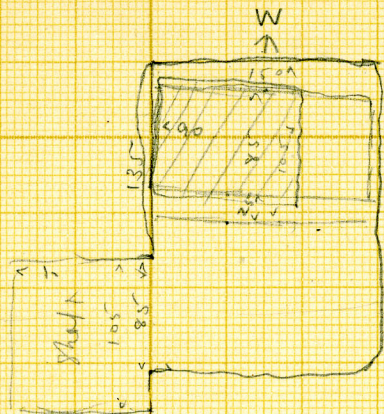
see sheet 2 for ch.

15 May 16

G 2084
B

(2)

ch. with grave pit

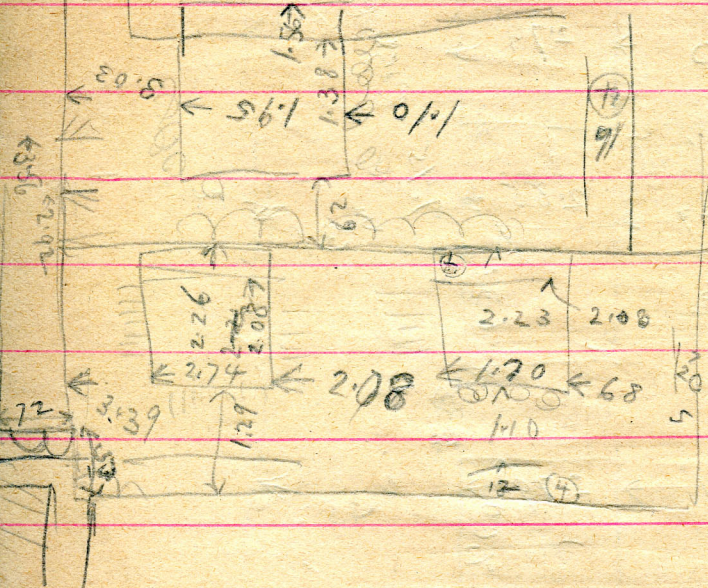
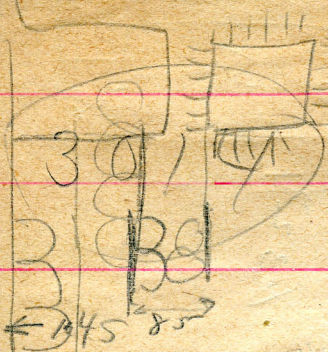


grave pit
55 deep -
150 long
60 wide inside

one large lat slab
as seen in place -
at head (N end)
a smaller slab
has been pulled off
& lies on floor of
ch. ca. 10 thick
In pit confused
mass of adult
bones -

It is clear that
the body lay on
L side, head N

15 M 16-



G 2085
A

9157 440
refree



regias
at 5

Burial
adult female
on l side

head W
(Skull fallen
forward on
face) face
orig. N.

heels drawn up
to hips - at knee
level

at area under
legs & arms
between legs

In bottom of shaft
2 large c. b.
39 x 20 x 13
+ 1 smaller c. b.
26 x 13.5 x 7
fallen from
above (?)



18 May 6

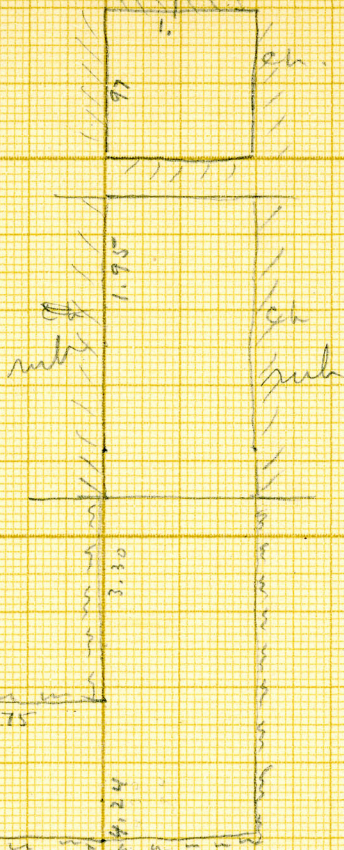
G 2085
B

ch at W

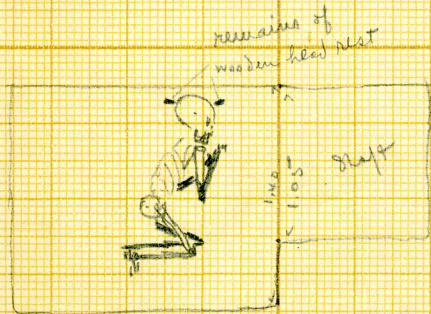
Burial -
adult male -
lying on l side
head N. face E
legs drawn up -
hands up in
front of breast.

Traces of flesh
+ of cloth on
bones.

Remains of
curved wooden
head rest.

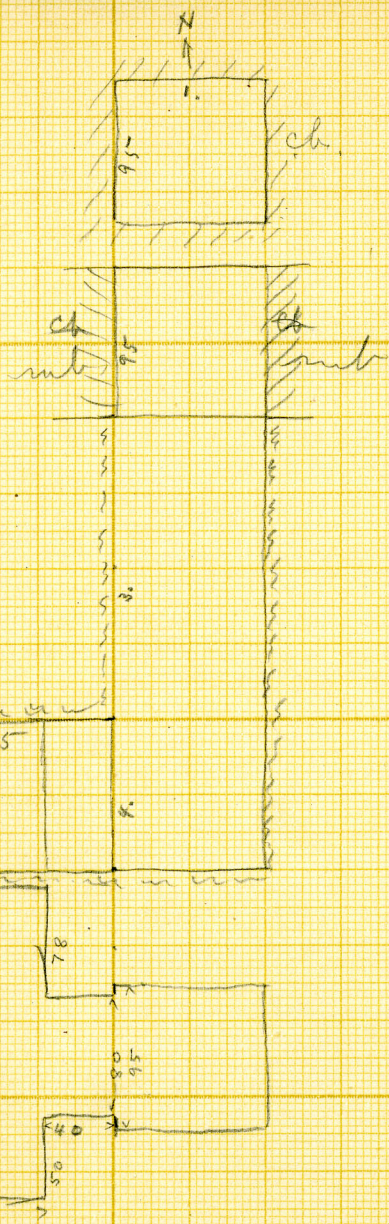


Patched w mud
L P



18 May 16

G 2085
C



Ch. at W.
Burial -
adult female,
extended on
l side, head
N, face E
knees slightly
drawn up -
l arm straight
down at side
rt ^{fore} arm bent
across body.

Walls of Ch. very
regularly cut

mud plastered int

16 May '66

G
2085
C

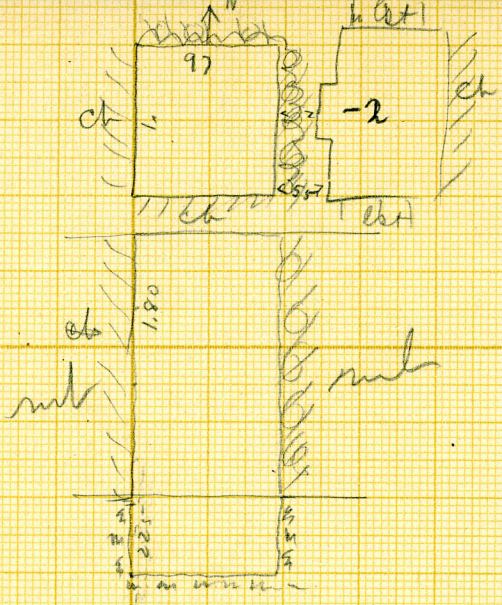


A 469

G
2085
C



G 2085
D



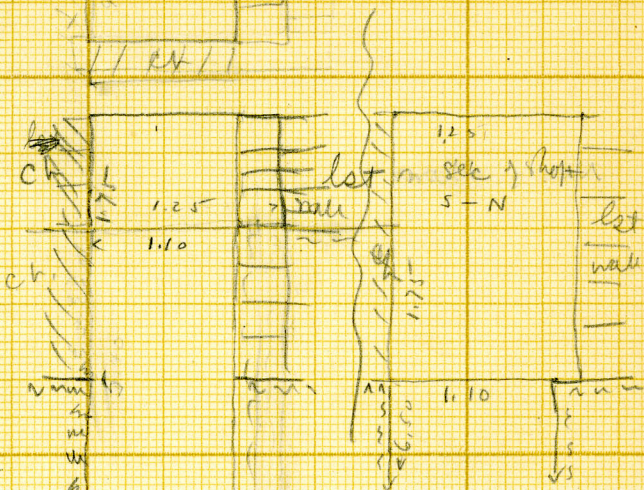
Shoft.
Empf.

16 May 6

G (2083) X
 mea of
 2083 E

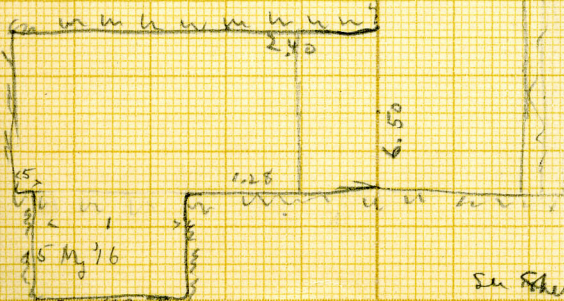
= 2085 X

32
 40
 Ch
 1.125
 1.10
 Ch at W
 Ch. empty



ch. 2.27 NS
~~1.86~~ 2W
 2.35 from shaft
 from door S 43
 " " N 45
 jamb 55

ch. began (opening full width
 of shaft) never
 completed



See sheet 2 for plan of Ch.

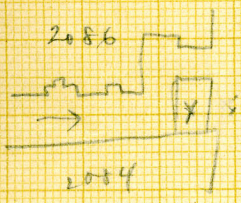
G. 2086:

Is built against 2085, sandy grey bricks 26 X 12 X 8 1/2. The wall in the north end of offering room is built against the rear wall of mastaba 2084 and is of the same bricks as main structure with grey plaster.

G 2086

735 X 260

Mastaba c. b. on lat foundation
built against 2085. Later than
2084. near W. wall of 2084
on E side of offering room.



Wall X added to 2084
is of small c. b. like
those in 2086.
Larger dark gray than
used in 2084 (of C. 56)

In SE. c. offering room
fastening stand with
inscriptions
G 38-40

"Beh-it"

In offering chamber
G 259
slab G 41 = G 271

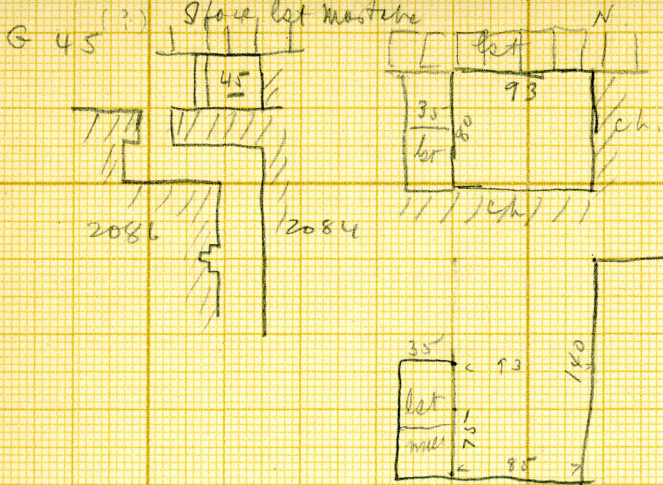
In side G 57

In entrance passage N of offering
room not counted slab G 45

cf. offering room C. 57

Outside N. end of dining
room on roofed chamber
a stone, 9 42 (photo C. 60-61)

In this roofed chamber
a basin 9 43 = (photo. C. 260)



at bottom shaft

- 85 EW ring to ~~ch~~
- 70 NS batter of c.b.
walls on S + E

G 2086

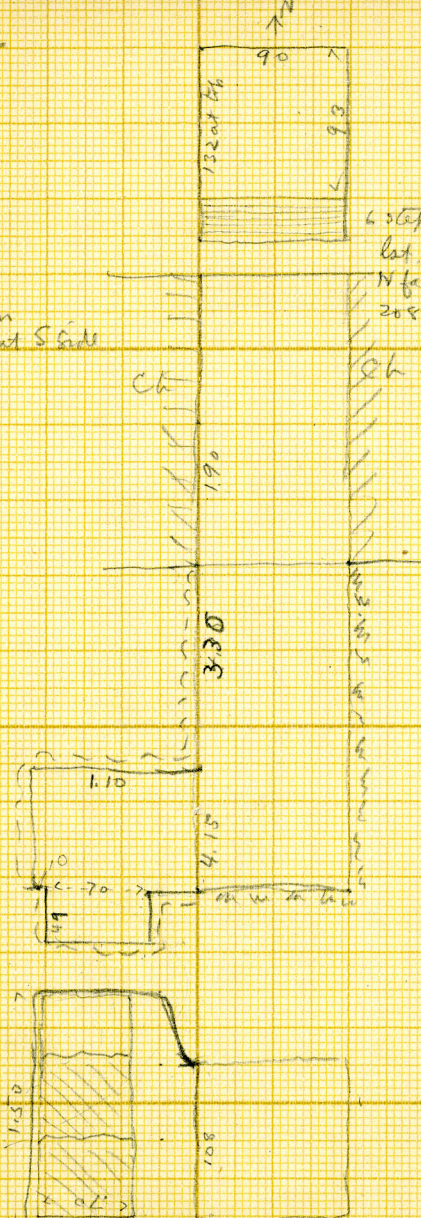
A

ch at W.

In ch rect.
gravel pit
corner with

3 blocks lat
ca. 10 thick
the one at
N pulled
into shaft.
Empty.

ch on
all but S side



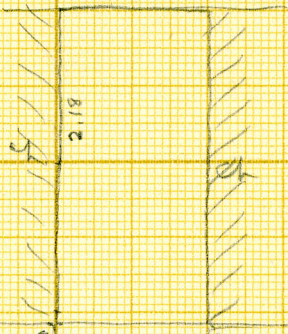
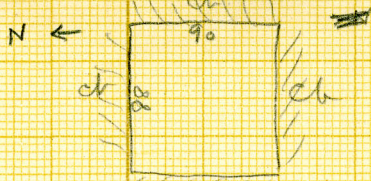
6 stepped courses
lat. blocks
N face of Mastaba
2085

16 M/16

G2086

ch at N

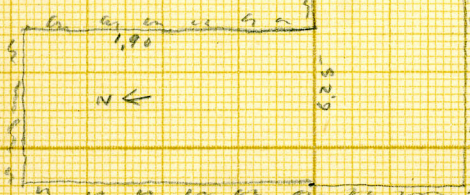
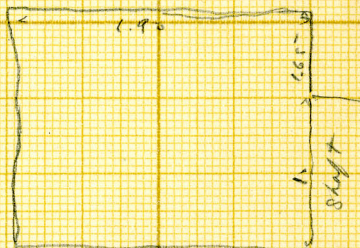
B



5.70

ch. 1.80 EW x 1.90 NS

65 jam jam E, to E wall

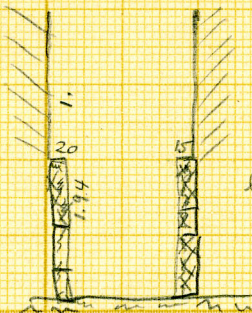
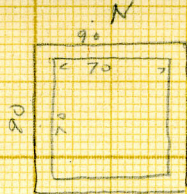


16 May 16

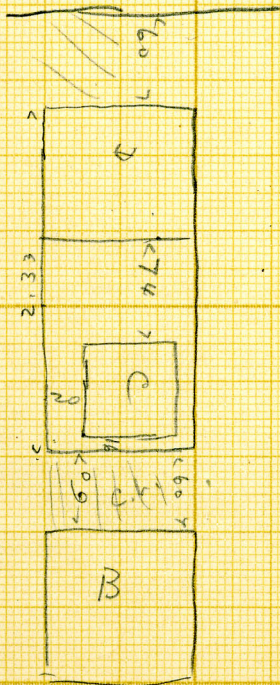
G 2086
C

mt
on plan

Rest shaft



lat revêtement



16 May/6

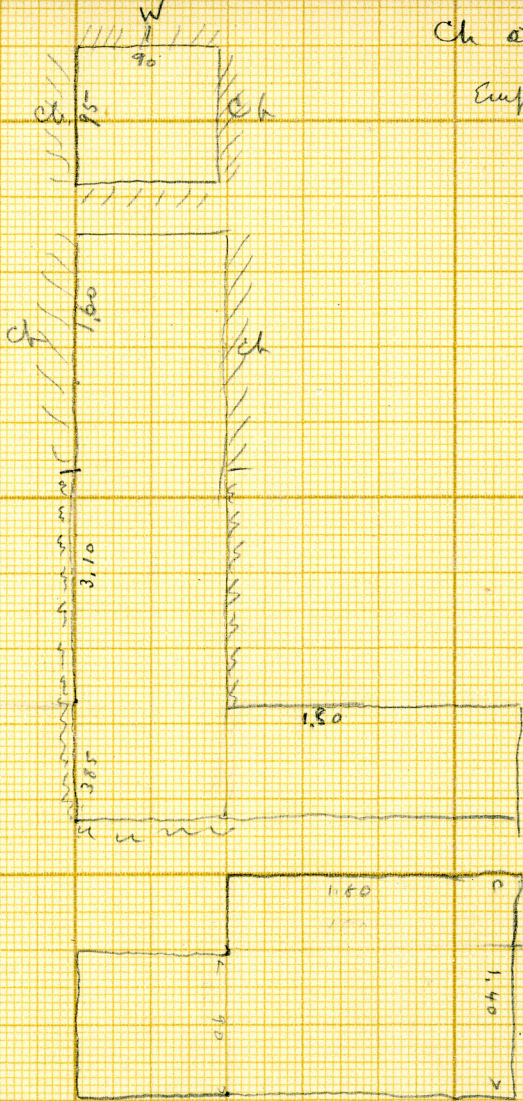
G 2086
D

Ch at N

Empty

at plan

3.85



16 May 6

9
2086



E60

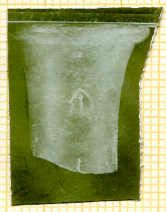


C61

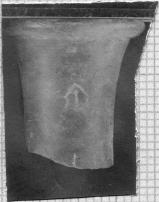




2086
offspring







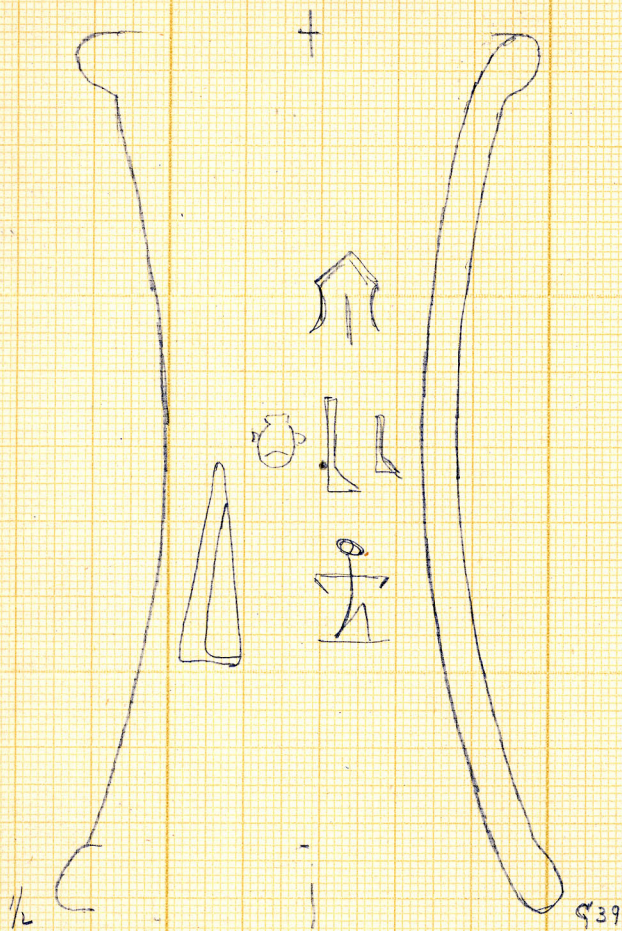


Over roof of sandat X
small shingle NO. 42
= C. 60. 61
C 74

In sandat? X
offering basin NO. 43 = C. 260

In shank Y. ^{interior of} W₁ of X
a red granite block NO 45 = C 262 1/2

G
2086



bone, wood, red pol.

G. G. 2087: includes shafts A. to D. These are lined with mud brick below the rubble above. The north limit of the core of this mastaba is the south face of shaft E. which really is a surface burial in constructed masonry between this mastaba and the enlargement of

2080 ~~2089~~ The north end of the offering room of 2081 has been built later extending over the edges of shaft A. of 2087. It, therefore, is later than A. and destroyed the superstructure of A. The shafts of B. and D. of 2087 are later additions to A. and C. as the west faces of B. and D. is originally niched face of B. and +D. This nucleus mastaba A. and B. was a mud brick with two double niches on the east face. The top of the niches were rough flat blocks of stone without any other lintel block, the whole surface plastered white stucco. B. shafts of 2087 is a rubble face which is clearly built against the north side of 2083, while the reconstruction of the offering room of 2081 has destroyed the south wall of 2087. It is possible that the latter was built against the north face of 2081.

A + C belong to earlier (c.b.)
structure built against (a)
2081.

B + D poor rubble construction
built against 2087 (c.b.) +
against 2082 (lat.).

G 2087

A

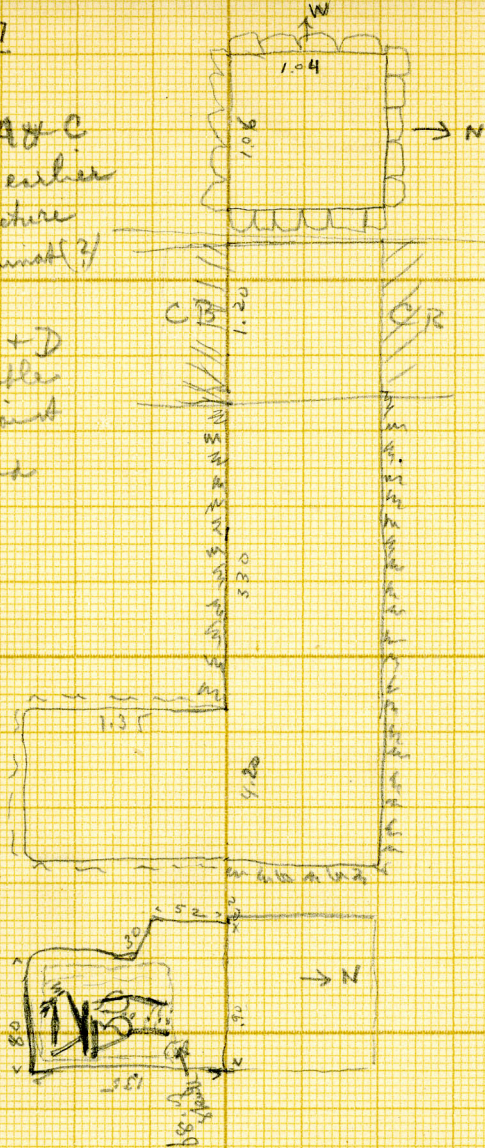
Shells A & C
belong to earlier
c. b. structure
built against (?)

2081.

Shells B + D
from rubble
built against

2087 and

2082



37°

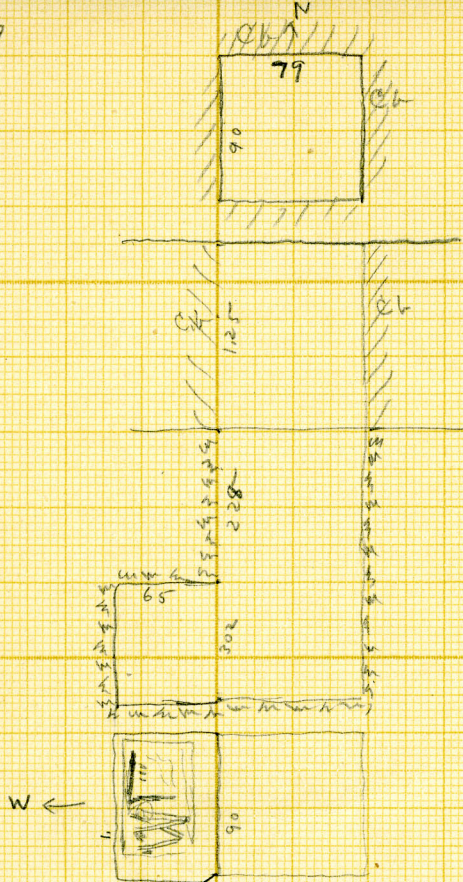
ch at S

disturbed adult
burial - apparently
female - skull
partially off + broken
body on back in
wooden box, head N
Knees drawn up +
flexed E.

Abundant remains
of wooden coffin
(wood ca 1 1/2 cm. thick)

c. b. N. E. W
rubble above

G 2087
C



Ch at W

Disturbed
burial in
wooden coffin -
wood 1 1/2 cm thick

Adult (head
missing) on l
side, head N
facing E

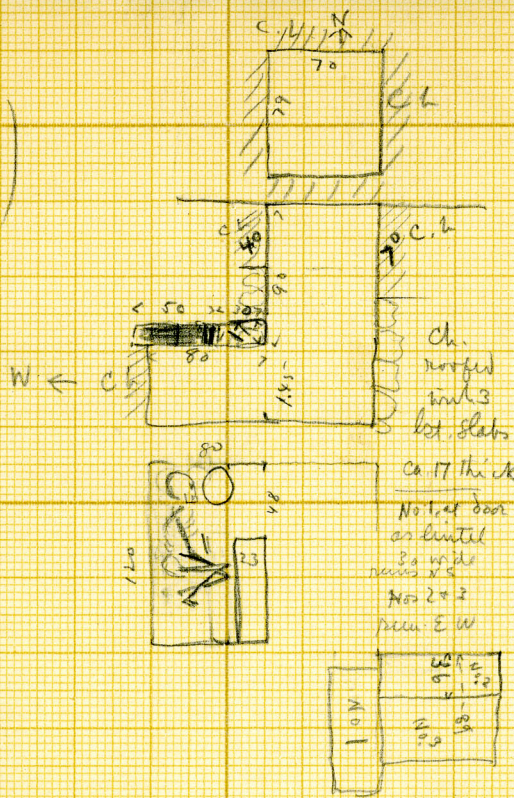
legs drawn up -
upper legs at rt
15 to body -

box 80 l x
ca. 45 w -
abundant remains
bones crushed
+ disintegrated

patched
middle alone

15 May 16

G 2087
E



Ch at W
built of c.b. at
S end, + of
bet blocks +
rough stones -
door 48 W
at NW cor of
shaft.

Burial - young
adult female (?)
on l side,
head N face E

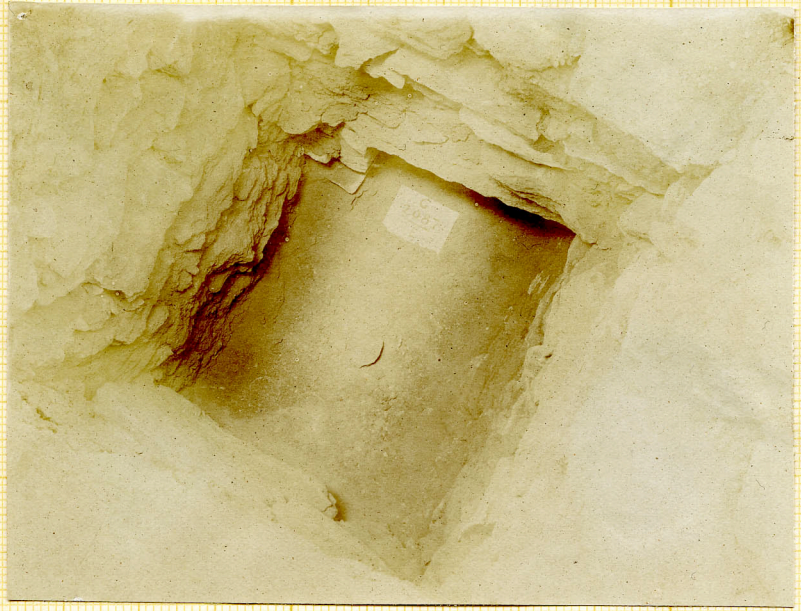
Knees up against
E side of chamber -
hands down between
legs.

At face a red pot
bowl, 1225 d.

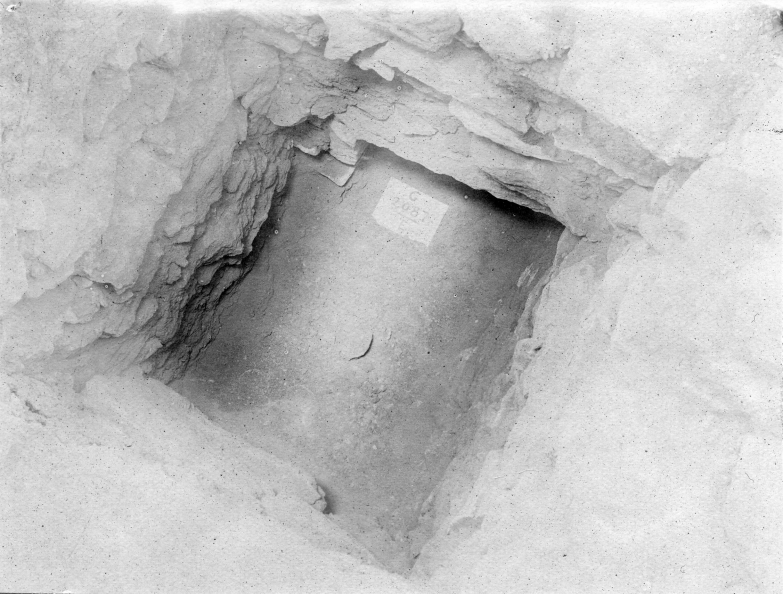
Rubble
except E face,
which is
c.b.

S
2687
E

X



2449



C
2087

S
2087
E

X



A(6)E



G
2087
E

G. 2088. D. Shaft is built against the western half of 2098 with rubble filling mud brick facing while the B. shaft of 2028 is built against 2088. The lower courses of the east face have a different orientation than those above, the indirection of the face of the wall having been changed after the destruction began or the lower courses may be the remains of an early mastaba. The mud brick wall built against this face ran across shaft X the rib vaulting of 2098 is 5 ribs in the distance of 98 cent. It is earlier than 2097 at least the brick facings of shaft A. are continuous around A. The brick facing on the west face has a joint which is not in line with the face along the south of A. The batter of the south face is so slight that it would appear that 2097 was practically built in conjunction with 2088 although the A. shaft of the latter was completed before the structure of F. was begun. The rubble and filling runs through the west face between the brick facing wall. The face on the east most probably runs through the 2098 in a straight line. The mass of brick work at the northern end being a later addition. The bricks in the addition are dark grey 42 X 20 X 15 while in the main structure they are yellower. The offering room walls opposite the large niche were built before the walls enclosing the X Room of 2097.

§ 2088

Mastaba rubble filling
c. b. facing
later than 2098

G 2088

Location of shafts A to D



E & W sides of shafts in line

W sides also in line with C D E F 2097

Division walls c. p. feet plastered rubble

2 Feb '16

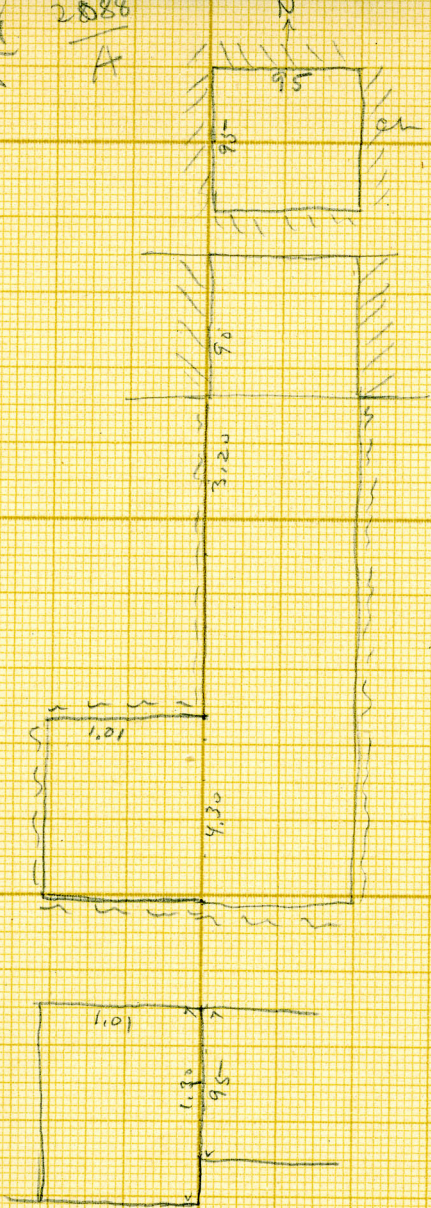
G 2097
G

2086
A

Chart W

Burial
disturber -
skull & leg
bones of
adult.

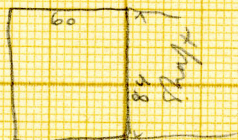
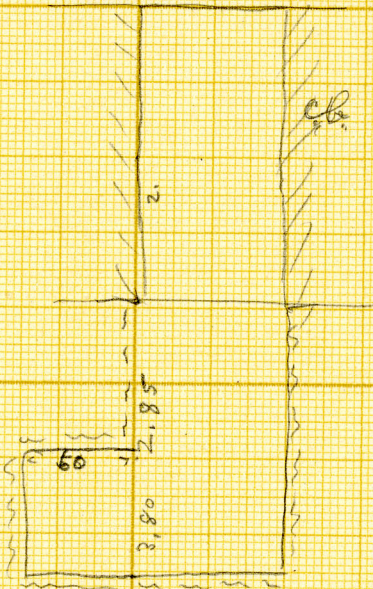
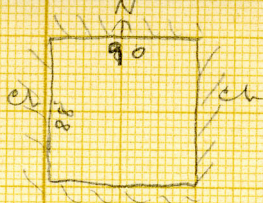
3.20
4.30



18 M/6

G 2077 2078
A B

ch. at W

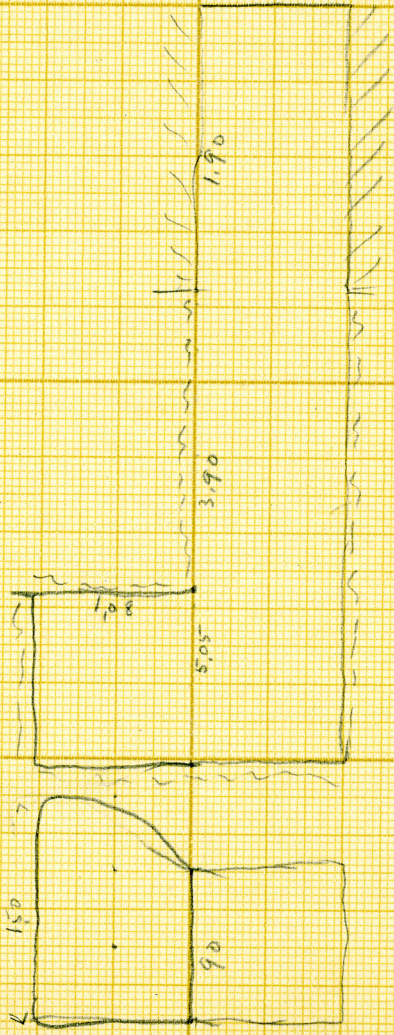
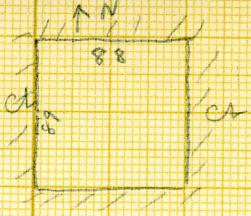


18 M 16
0

G 2097 2068
II = C

not in plan

dw at W
Euphts



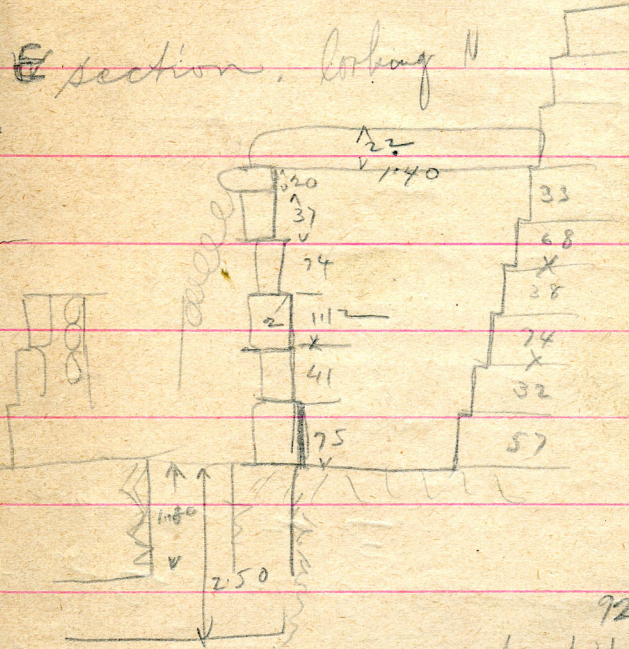
18 May 76

2090

✓ ✓

Coursed stepped facing.
roofed with ¹⁰slate, rests
on ledge of large moorstone to E

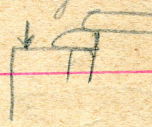
W. E section, looking N



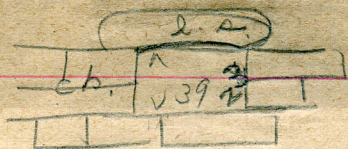
At S end, see a rock pit, with
chamber opening to W. A rubble
wall enclosure, this in W. + former
roof of which N. face of moorstone has
formed S. wall. door part N.S.W.C.

S.W.C. destroyed No 10, at N.W.C. 4
(C) in situ. Rubble filled
Pit A. rubble masonry
Spans to N. ...

slab of an older ~~quartzite~~ ~~blot~~ V
down sealed with a sheet
blotter & small stone plaster
over with mud.

Part B, well well built rubble
masonry with resting on rock
1.75m below E. edge. = top highest
high course in chamber. 
Room to

Part C, as B plaster with mud
chamber on E.



17x34 x 11

~~From rock pit in new room~~
~~the new room, beside pit in begin~~
 of second pit in rock.

2 ^{corner} red mud here.



Part A. rubble faced. except
 for ^{cb} ca 75 cm above rock
 at Room → E.

Part **C** rubble faced mud
 plastered Room N.
 askew to axis.

Part **B**. askew to axis shaft
 + room (→ N) of rubble construction
 in rubble core not through
 rock

✓

2095

most of wholly of C.B.

secret of Sand.

4 pits

alternating

with an E. face.

V

6/2090.

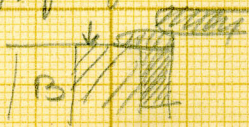
course stepped facing
debris filled (rubble)

offering room is E roofed with
10 slabs resting on one of the
stepped courses of masonry to E
(¹²²³2080). At S. end is rock shaft
92x92 with chamber at W. a rubble
wall enclosed this on the W. I found
a room of which the N. face of a wall
to S. found the S. wall. floor prob. at
S. W. C. ~~the~~ ^{floor} wall is destroyed to
10. At S. W. C. but at N. W. 4 c. still
in situ.

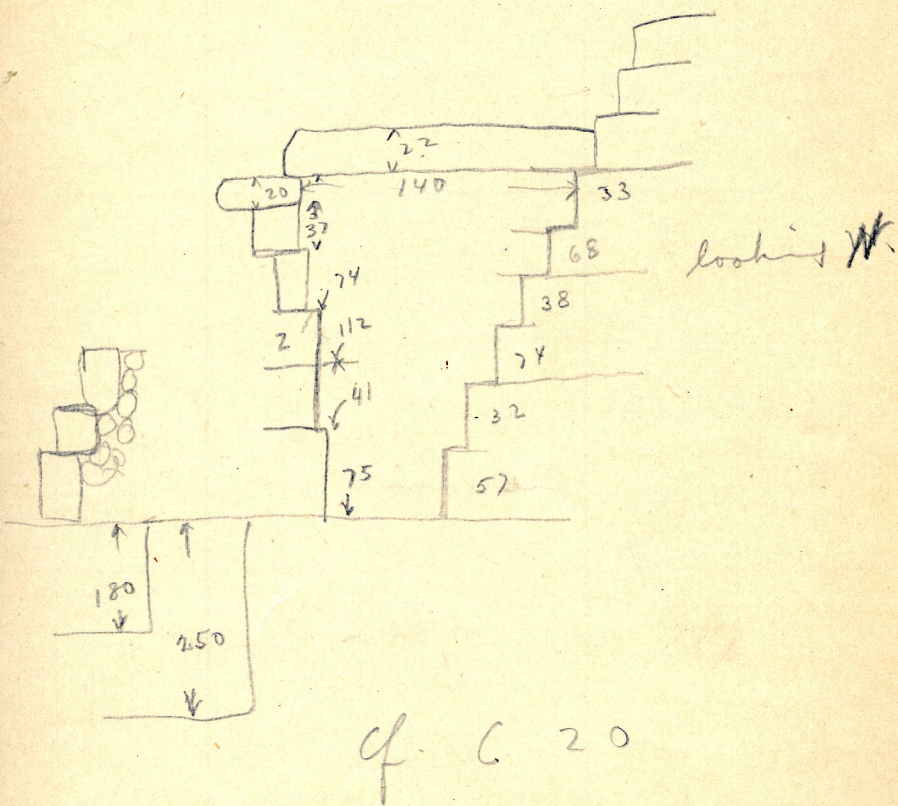
Shaft A rubble & mud plastered with
small chamber to N. rubble walls plastered
with mud & lime. Roofed with slabs &
a re-used niche block (uninscribed)
floor pecked with 2 vertical blocks and a
smaller stones plastered over with
mud

Shaft B walls well built rubble
unplastered resting on rock surface
1.75m below E edge = top of highest
high course in chamber.

[OVER]



Shaft C as B, plastered with mud, Chamber on E

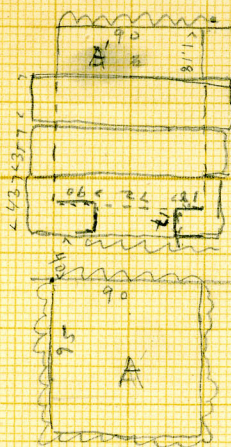


In debris outside door
 small basin unscrubbed
 + top of large pottery jars

G 2090

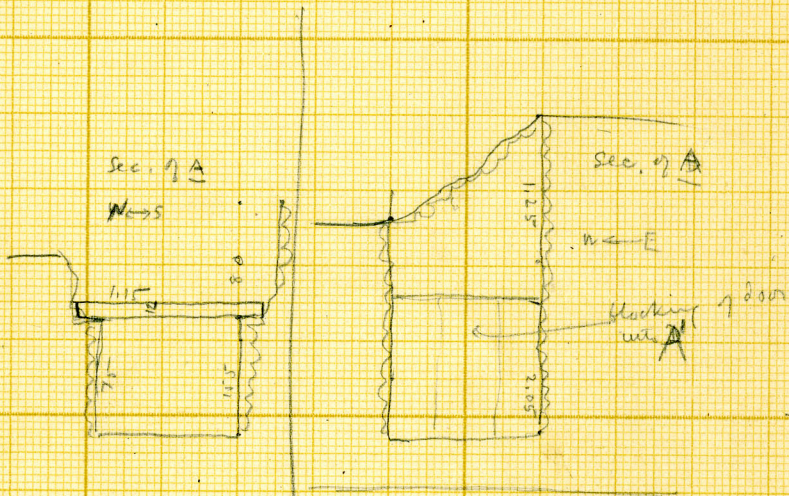
A + B

of adobe
Story's record



- 1.55
on N side
- 7.5 ft on
top of lat.
work.
3 Corner slabs
1.15 C.
12 thick

Sheets A'
inside
plaster
with greyish
stucco
~~at~~ door at
S end into
A, blocked
with slab.
In A', 1 pelin
bone + a broken
leg bone of
adult.
A Supt



26 May 16

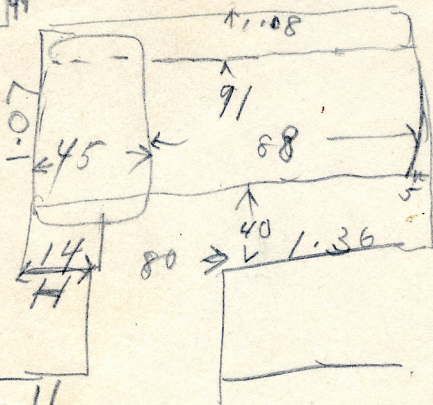
G
2090
A



A16



2090 B



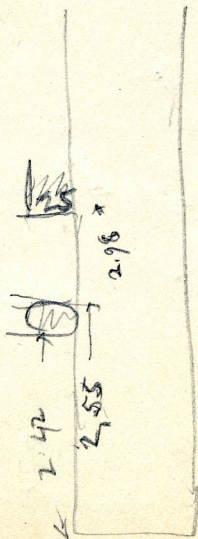
opening filled
with rubble mud
concrete

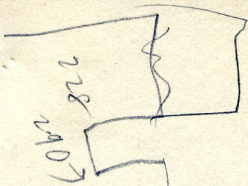
5-6

14. 45

12. 89

3-6 11. 90





5.93

6.58

7.107

