

Surge

Objects not placed

No. 36. Lintel

52. lintel.

54. stone pags.

55. basin

56. flint

57. flint

58. lintel.

Found in street E of 3030  
flint 19

---

In room (?) ~~to~~ N of  
opening chamber of 2094.  
2 lentel blocks  
G 32-33

---

Leaves one roofed  
chamber N. of 2086  
pedestal base G 42

---

Between 2084-2086  
base G 43

---

2098 opening room  
niche still G 53a  
E. extension  
+ slot G 53b

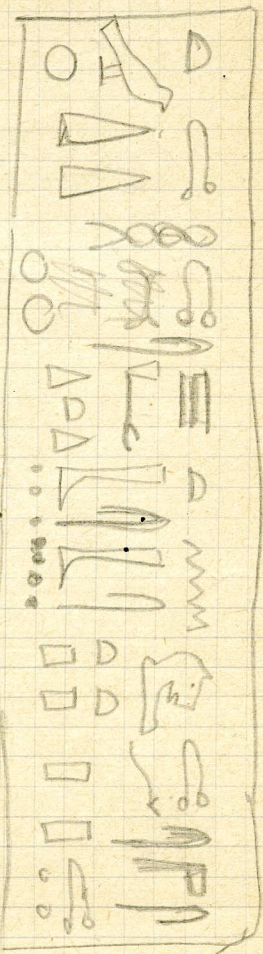
single way

with logg

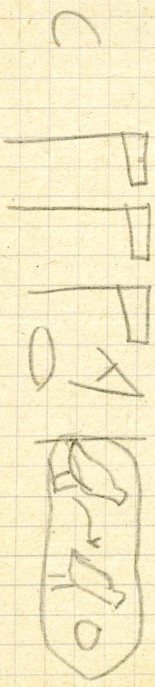
shape

on other side

3004



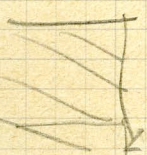
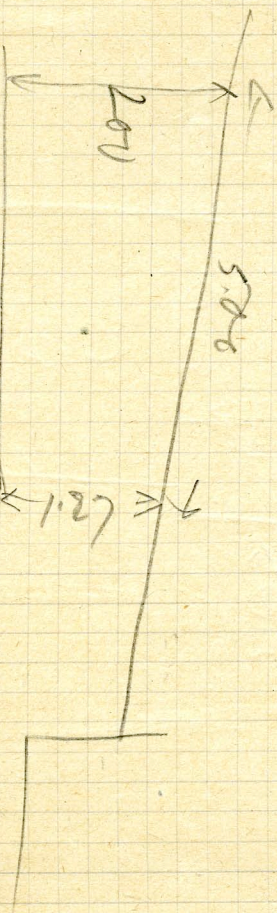
list of ingredients:  
 in case, fat, oils, fruit  
 etc



Khanfu-mers-nelene

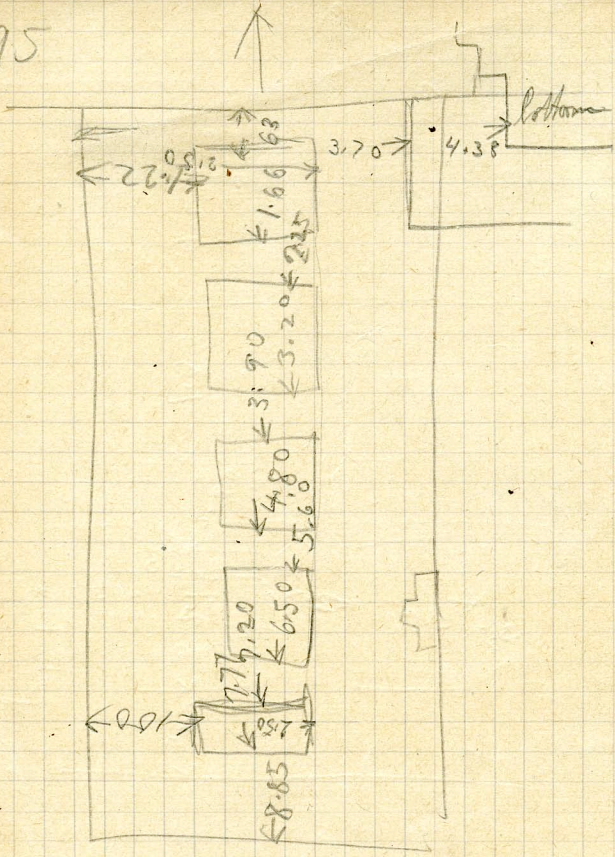


CP.

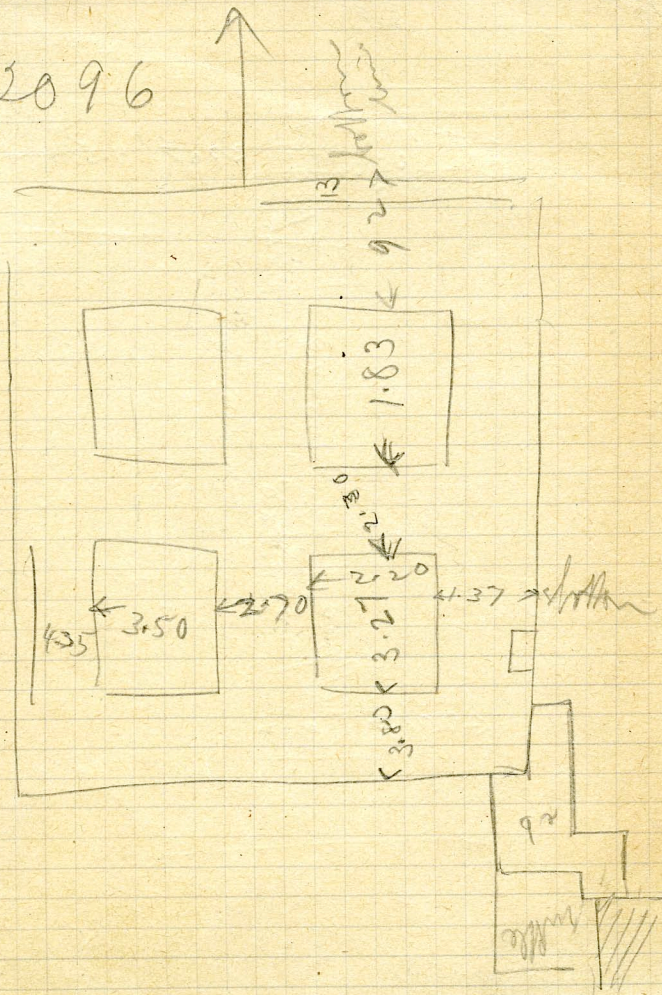




2095

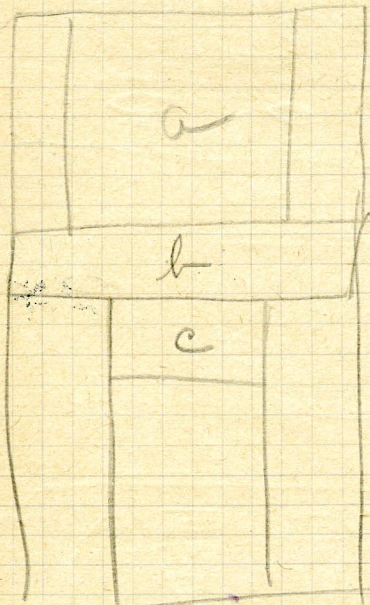


# 2096



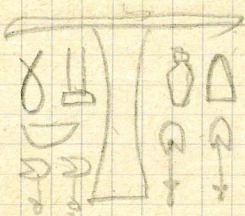
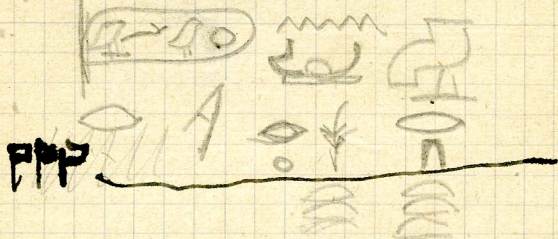


3004  
miche

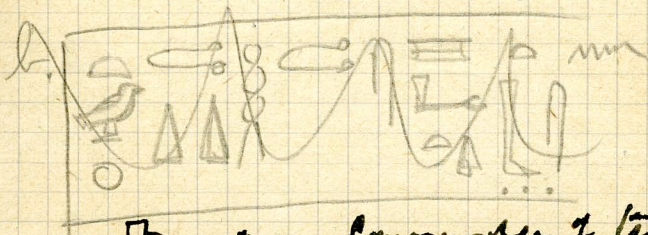


a. seated man before table  
→ R.

above -



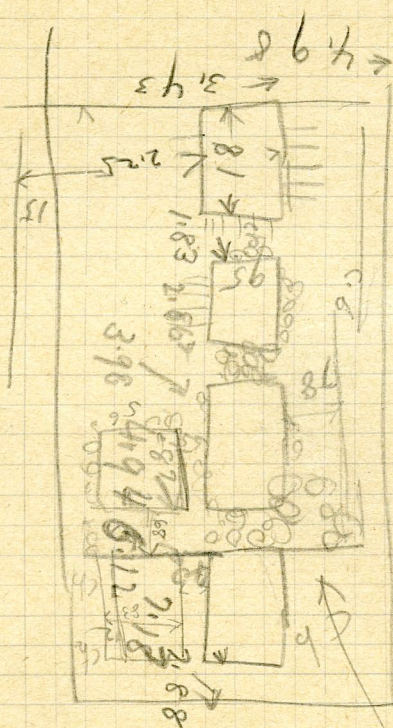
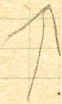
of 3f



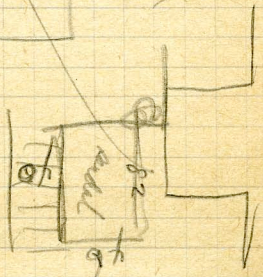
of 3f

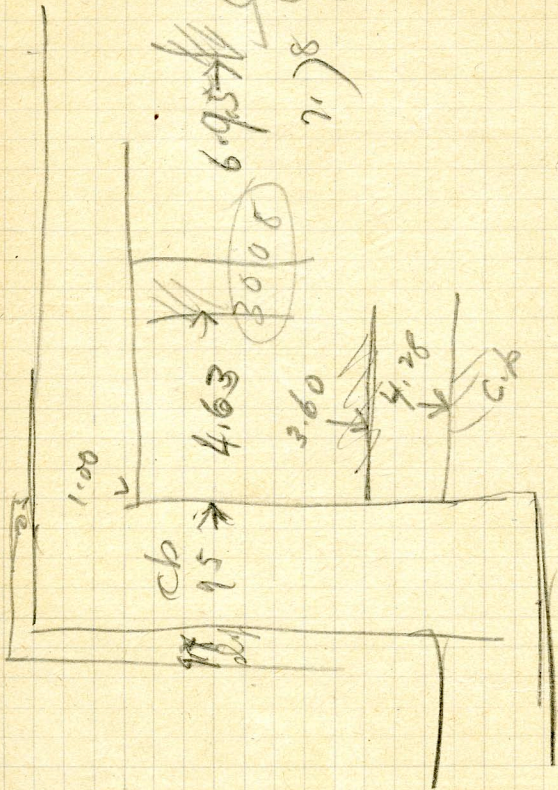
of 3f

Commander of ten  
of the navy ship



305





B

8.16

~~6.95~~

3005

4.63

3.60

4.28

C.P.

1.00

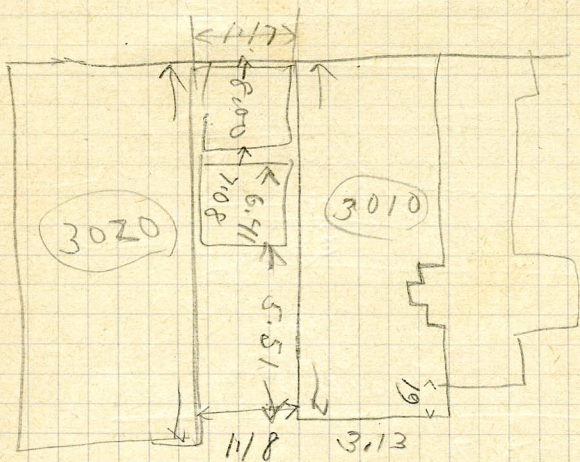
cb

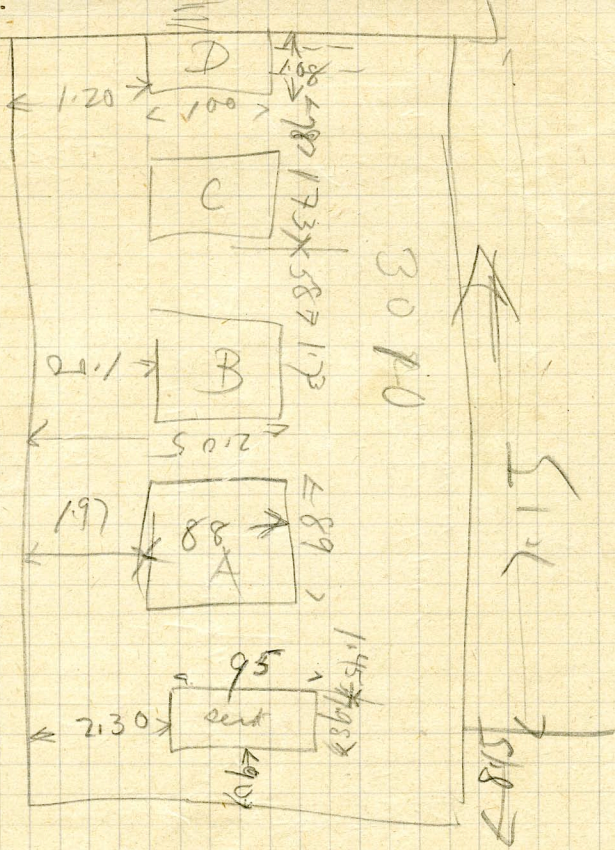
15

15







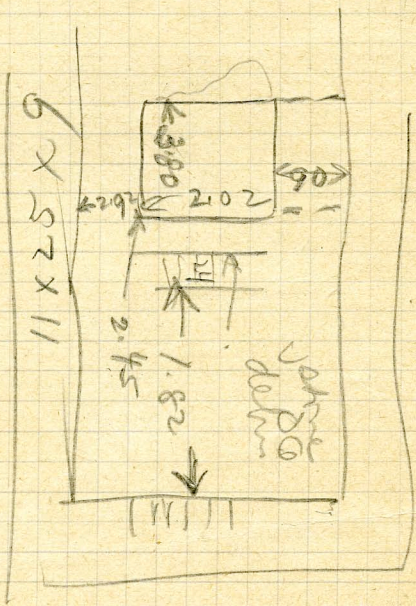




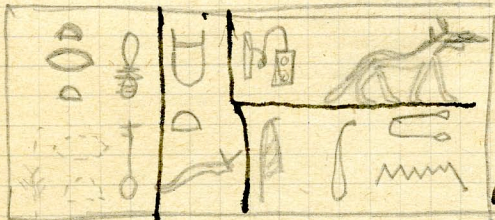




~~8027~~ 3034



on ① bull



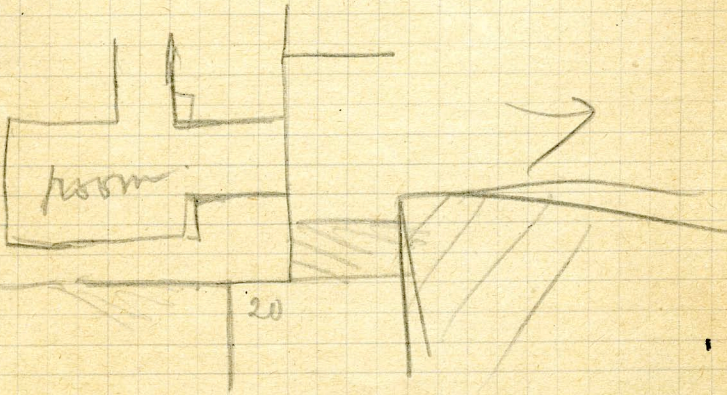
3035

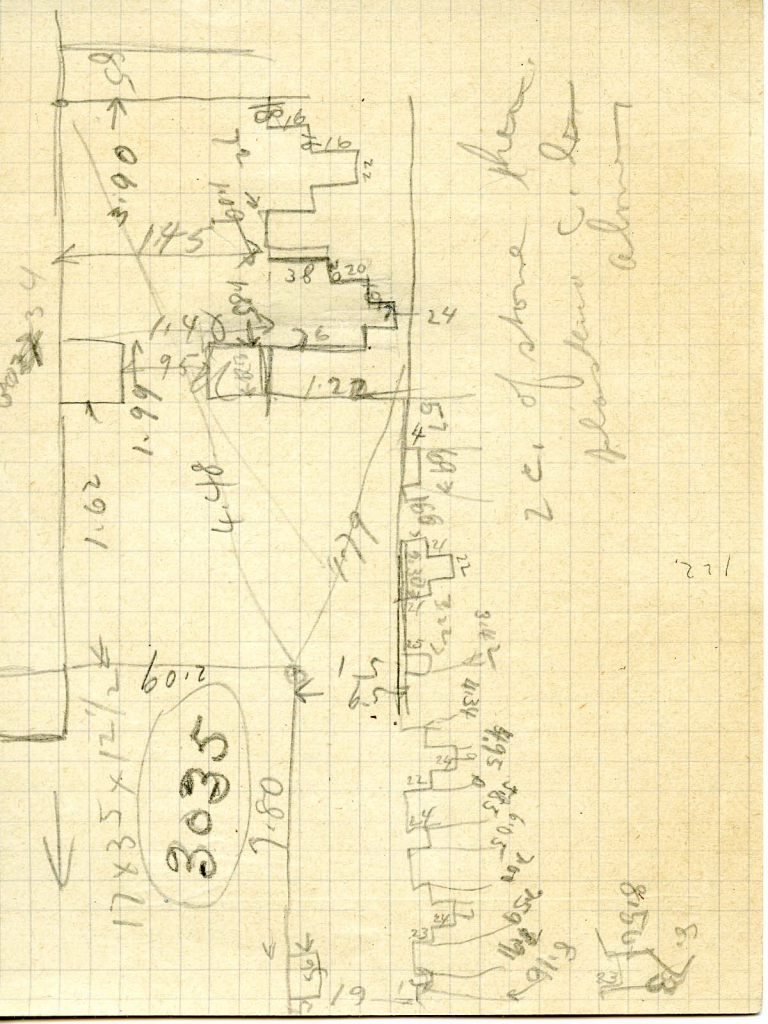
Judicial  
scribe

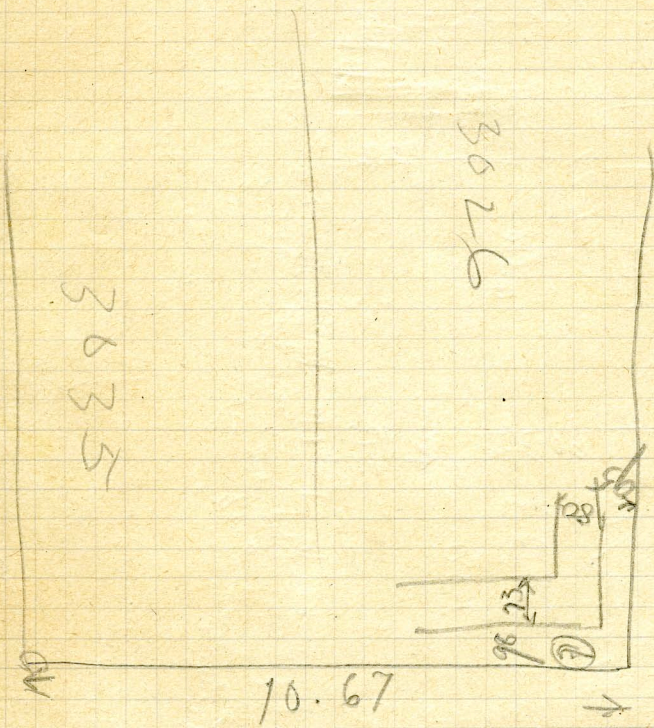
street his wife  
Kopret

Twenty

3003







3626

3635

10.67



ND







Batters for Section E F

3043 (W of 3)? = E. face =  $85^{\circ} 5'$

3044 = E. face =  $83^{\circ} 40'$

3036 (W of north) N. face =  $83^{\circ} 40'$

W. face =  $84^{\circ}$

S. face =  $83^{\circ}$

E. face =  $84^{\circ} 10'$

hall S of room do  $\perp$

3038 W. =  $74^{\circ} 30'$

3021 N =  $83^{\circ} 25'$

E = " ///

3033 E =  $82^{\circ} 30'$

3033 room W =  $75^{\circ} 20'$

room E = 89 90

3024 S = 81

room E  $\perp$

room W =  $82^{\circ} 20'$

3005 = W. = 85 ✓

3008 = W. 84

✓ 3008 N. addition W face -  $81^{\circ}15'$

✓ 3026 = W =  $86^{\circ}20'$   
S =  $88^{\circ}15'$

✓ 3035 = E =  $83^{\circ}$

stone midline =  $87^{\circ}$   
at S end

✓ 3003 = W. -  $80^{\circ}40'$

" inner room E =  $83$

" " W. =  $86.15$

" outer room W =  $88$

✓ 2096 = N -  $87.10$

E =  $83.45$

" E wall room =  $87.30$

2 at 07 S =  $84.45$

E =  $85$

mistake E of do - W face -  $85^{\circ}30'$

E face =  $85^{\circ}15'$

V

✓ 2093 = E face =  $83^{\circ}40$   
middle W. face =  $81^{\circ}30$   
" S face =  $77^{\circ}50$

✓ 2092 = E face cl =  $82^{\circ}25$

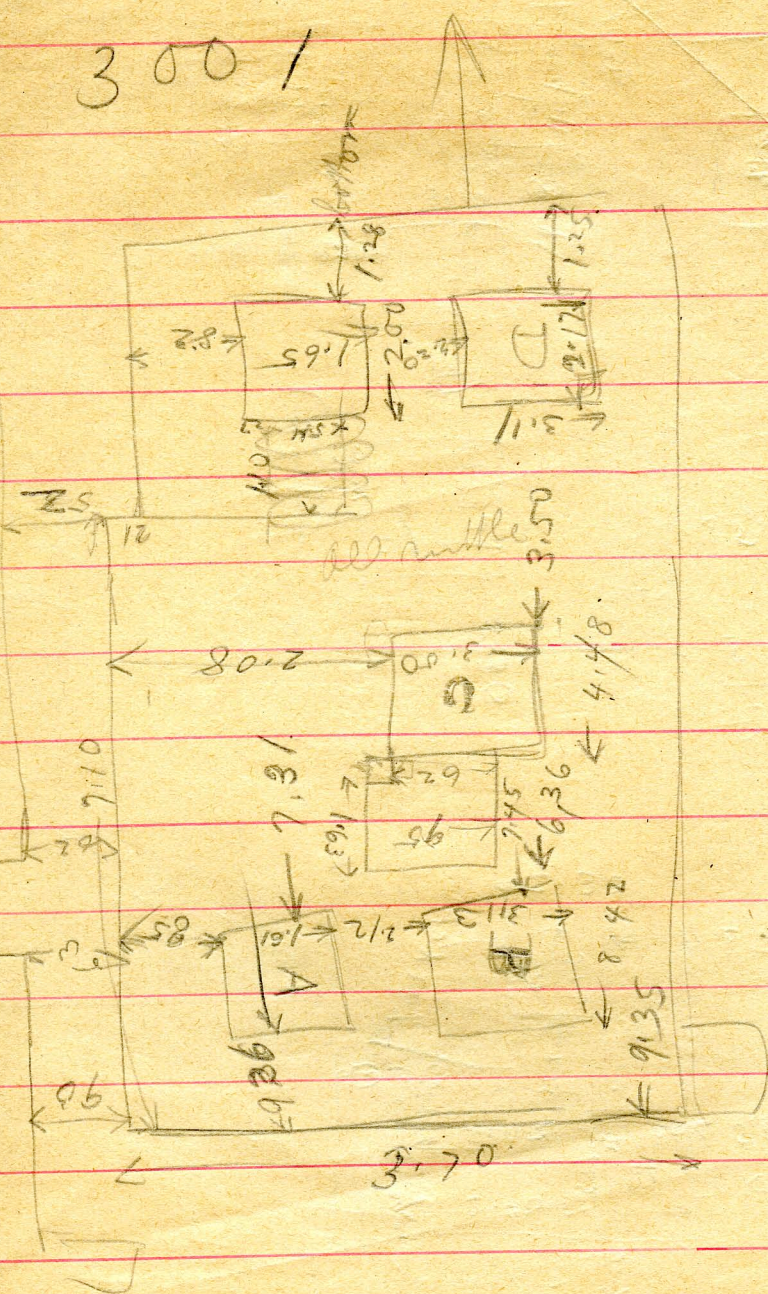
✓ 2080 = N face  
stone steps =  $75^{\circ}10$

✓ 3010 = Iron wall =  $84$

✓



3001







209

13117  
1195  
1209

1055  
988

903  
835

792  
652

553  
490

440  
400  
335

250  
186  
91

2

3.60

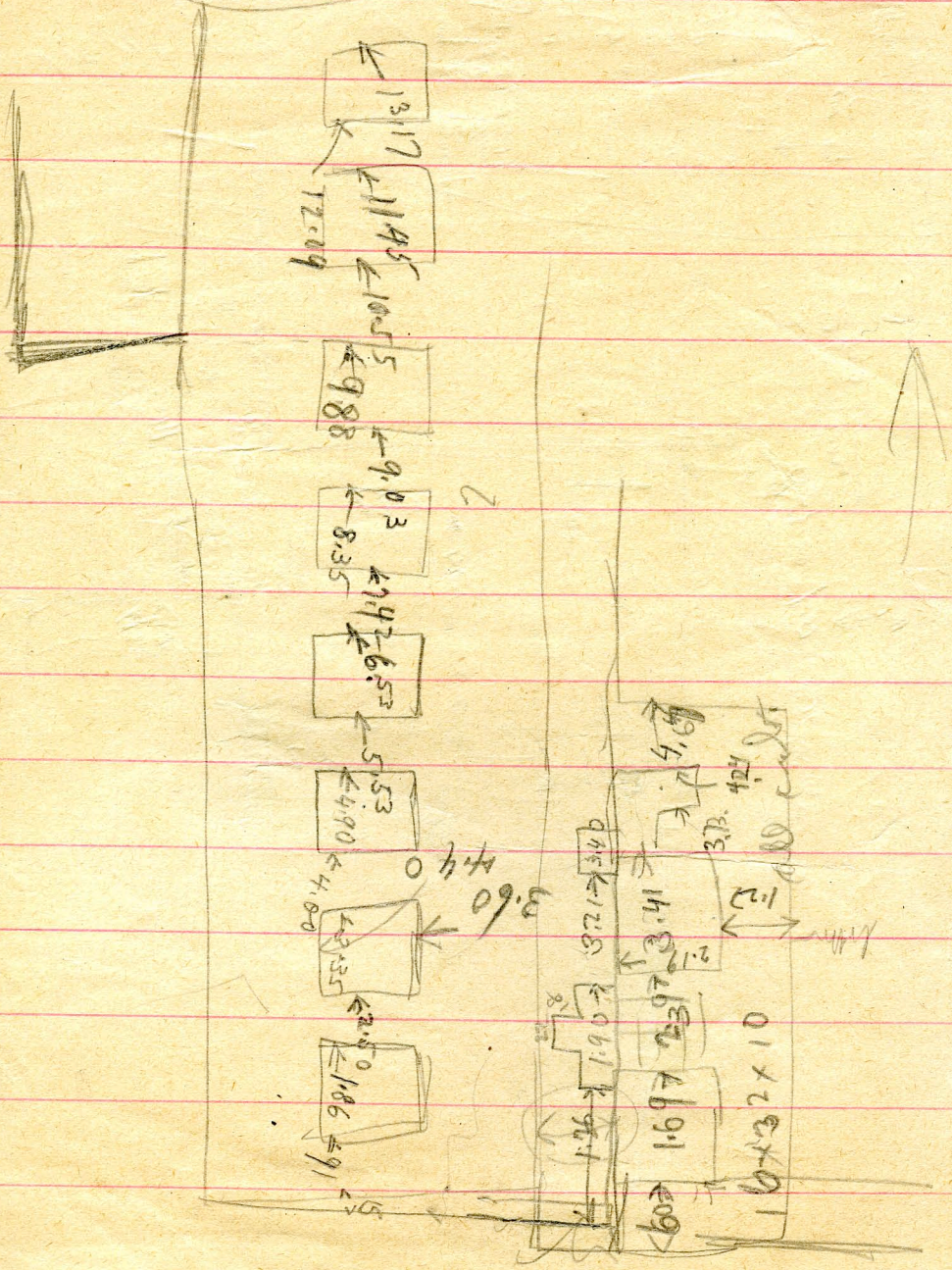
1.26  
1.90  
3.72

14.6  
37.42

16.97  
23.7  
3.41

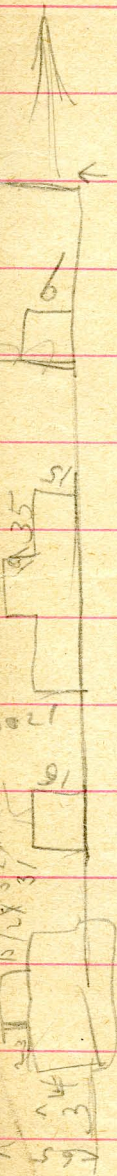
1.2  
1.0

16x32x10





3012

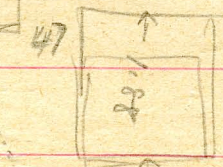
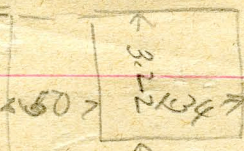
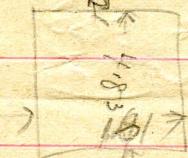
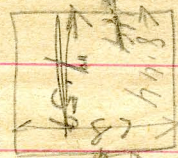
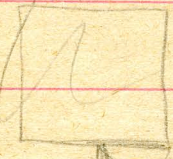


15.90

1.23

3.88

Water

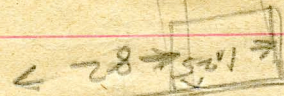
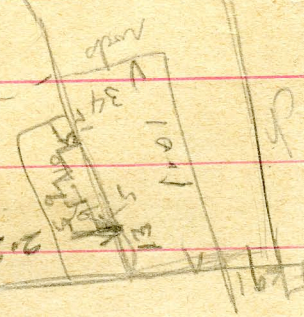
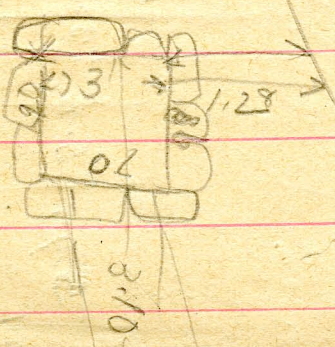
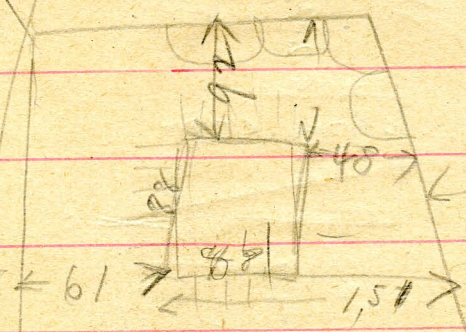
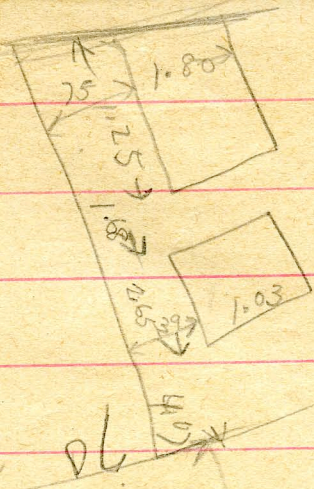


3012

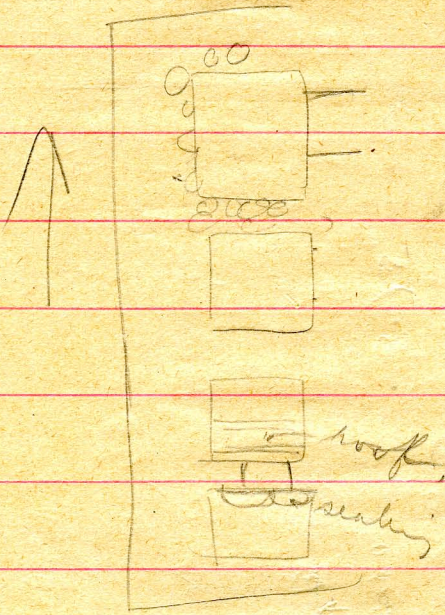
17x34x11

2015

12/6x25x9



2090



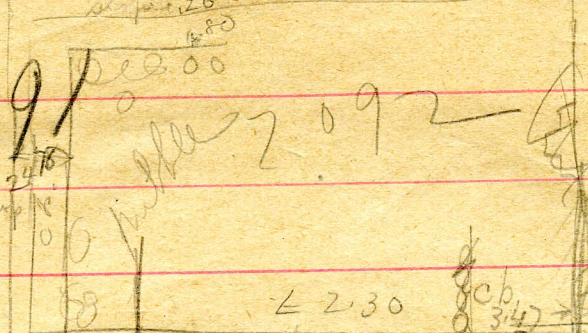
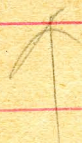
2091

at Jan 20

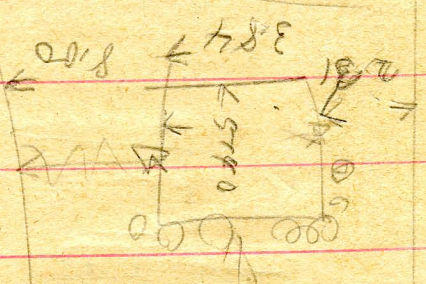
2.00

2476  
dip 100

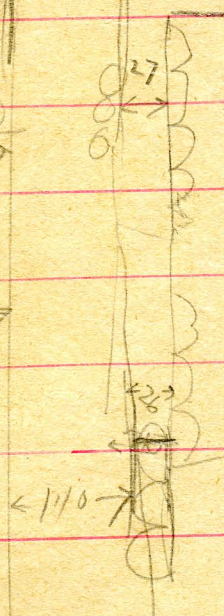
2092



litter



3.75



2091

Large mustaba, rubble core  
stepped facing of which only base  
at S. E. side of main 2092  
which is built across at N. end,  
rubble core faces down into  
2092 on W. & E.

E face is line of 2090E which  
was built against it. S. limit not  
discable as on the mustaba <sup>12'</sup> (shd)  
heel but part the S. core will  
face is represented by the N face  
of pit. (3) at N. E. corner of lotter  
mustaba 1211 On <sup>N. part</sup> W. face on  
2-3 c. full <sup>many</sup> rocks up  
N. face 3+ and are 2 c. in situ  
On this was the mud brick facing  
of 2092.

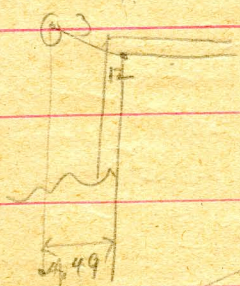
1 large rubble core pit

V

2092.

Mastaba built over N. half of

2091. Using lower e. of stone  
stepped. facing - + finished with  
face of c.p. on the old rubble  
core.



Main opening

chamber at S. end of  
E. face. of S. wall of

c.p. in line with new

S. face. large niche.

door to E. Further <sup>1/2</sup> another

Wall was  
flashed with  
white over yellow.  
no mud plaster.

chamber built enclosing a

rock pit in N. level and

passage open to older wall

a c.p. door but like 2092-2093

formed entrance. Like a

rubble facing now but on

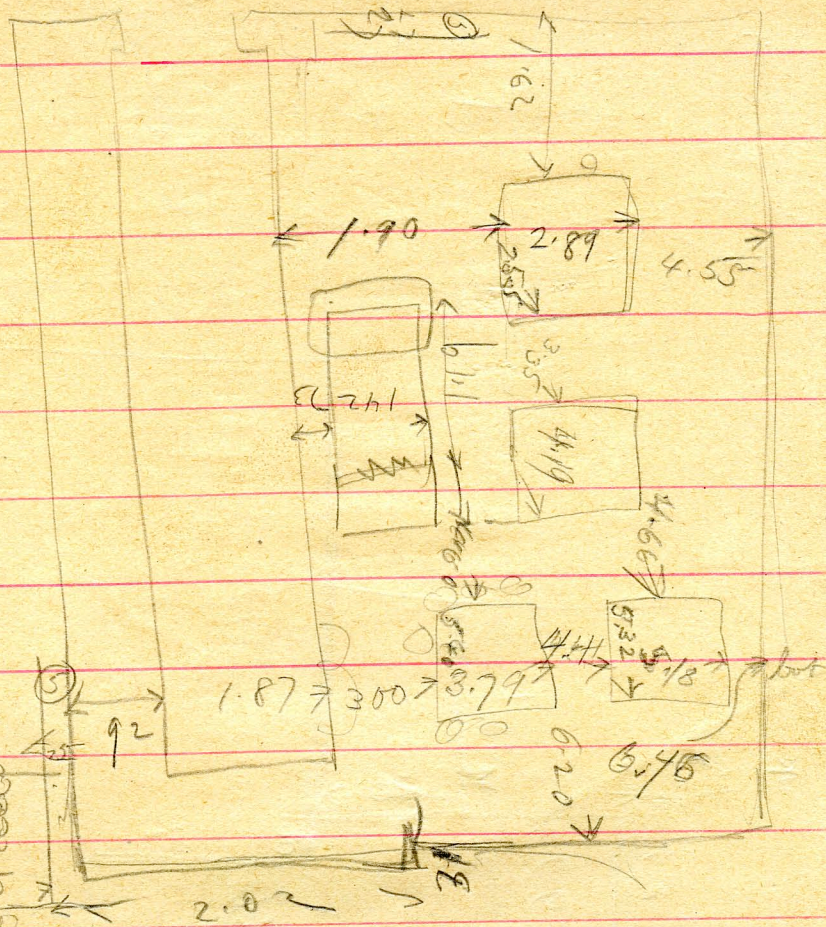
S. side of 2093 at the foot

S. part of this door

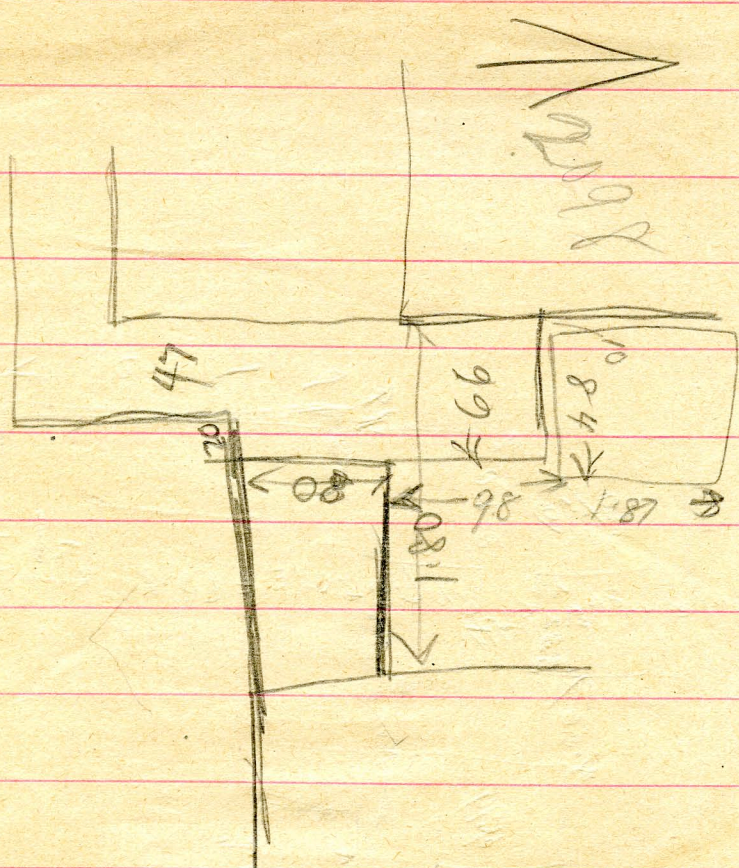
A small window between

old & new house.

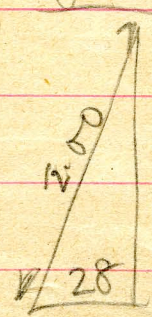
Must. S. of 2091



2091



Large C.D. mastaba  
 S. of interlocking floor (3030)



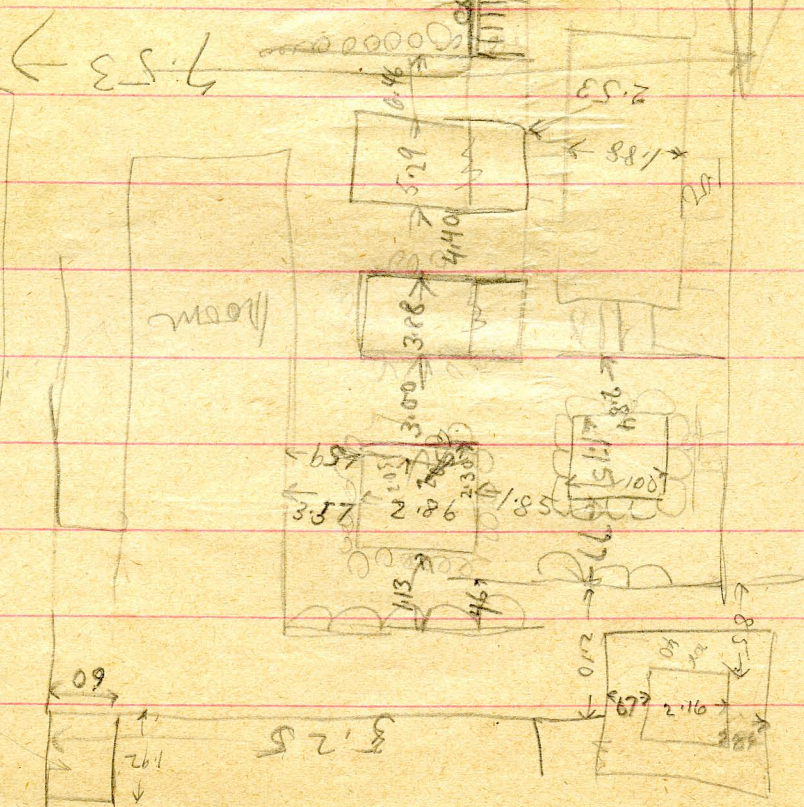
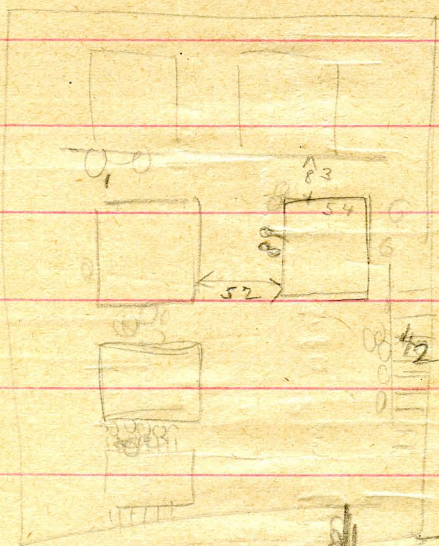
lbs. 21-20  
 x 40  
 x 15

Drill from lower 32

are 22x44x18  
 above 20x40x15

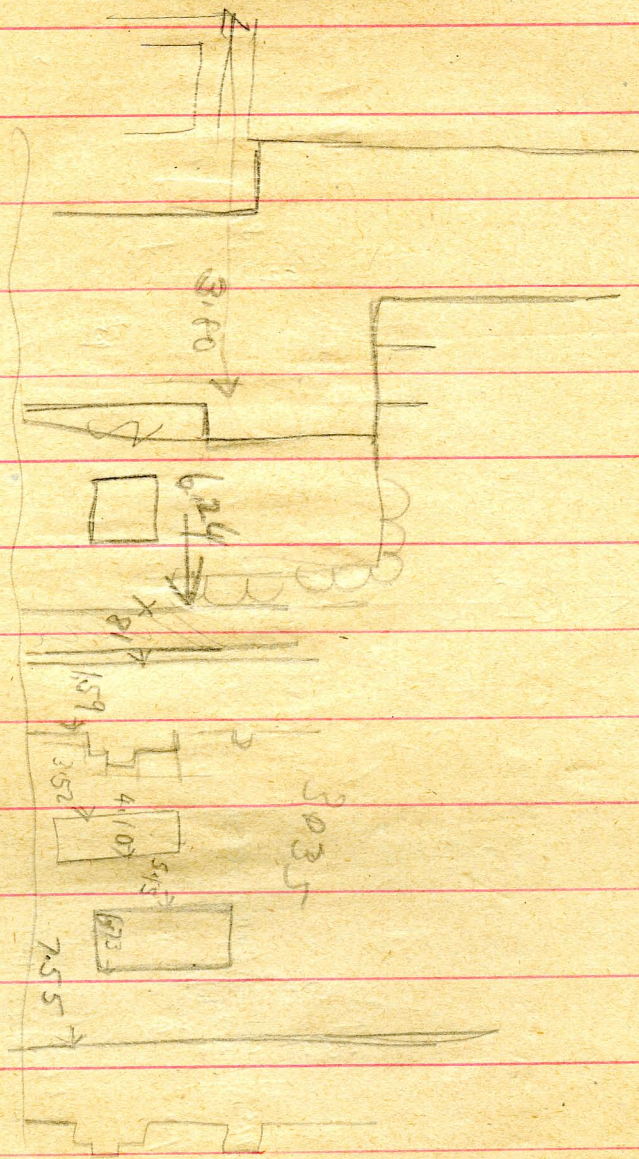
3005

1



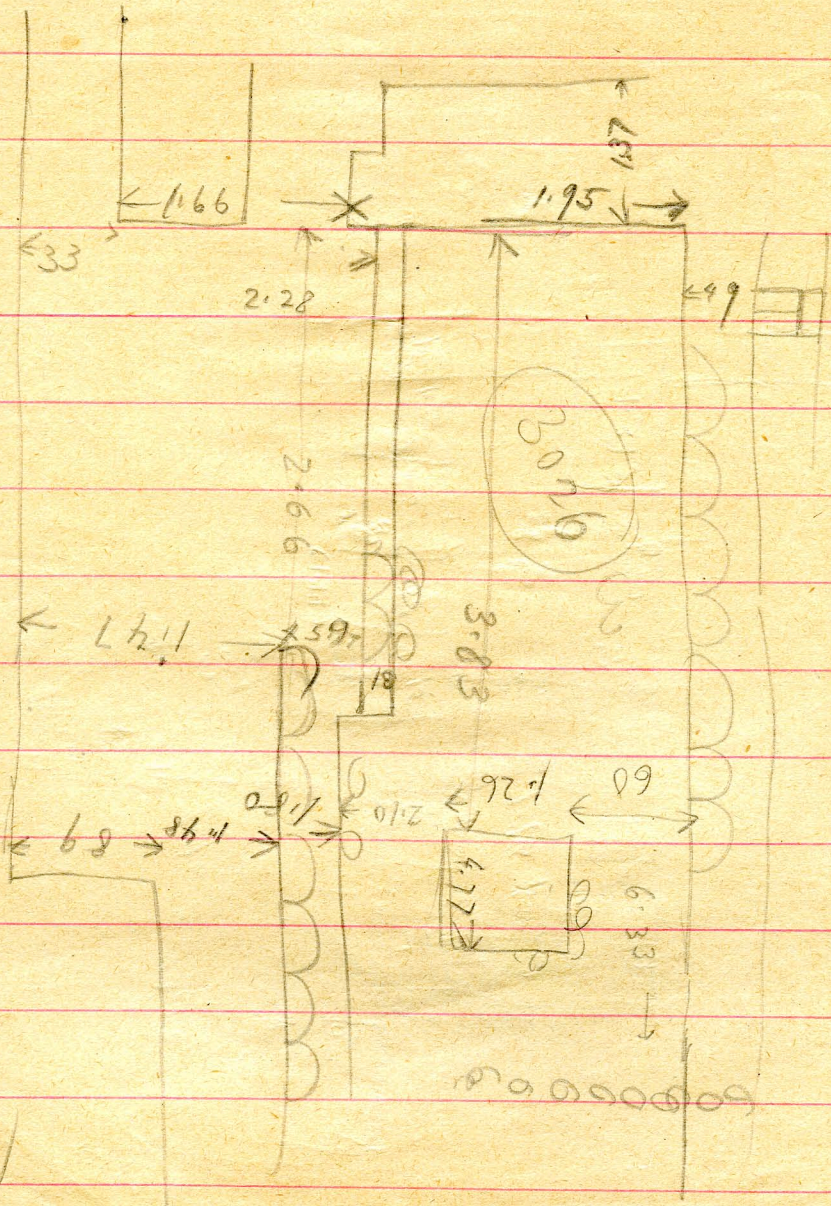
90.47

5.25

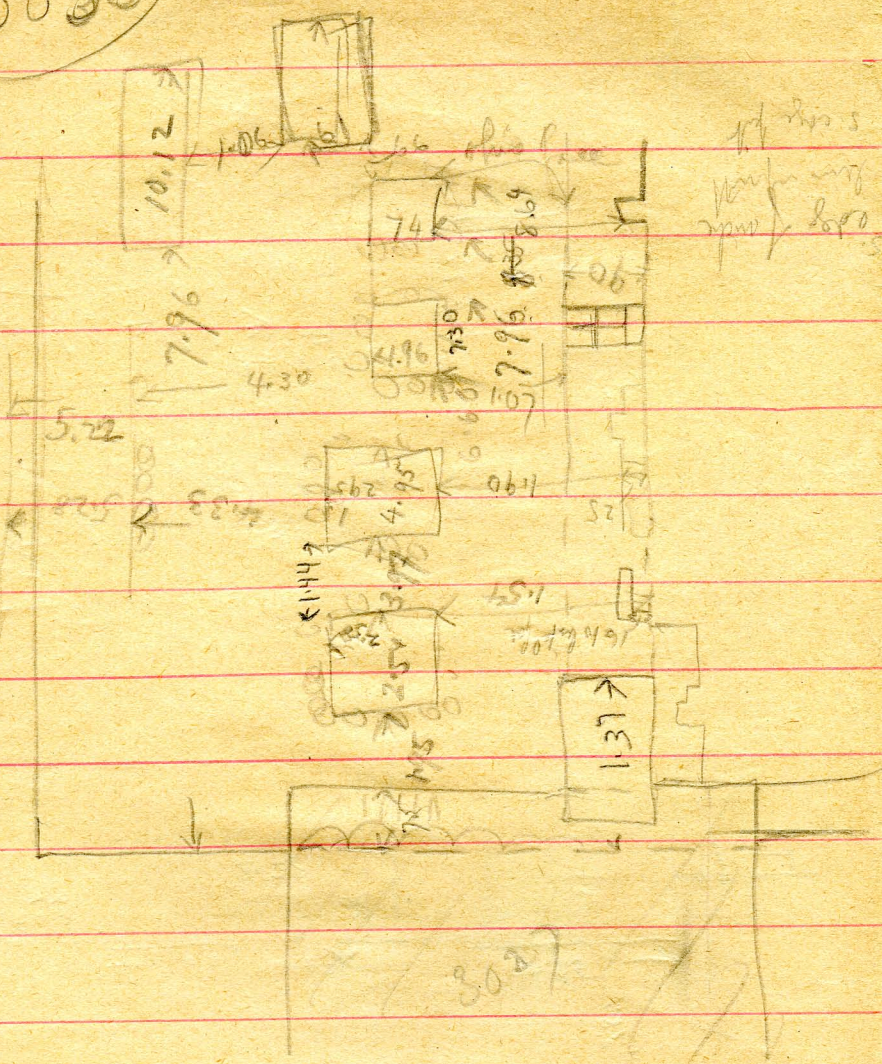


3035

3026

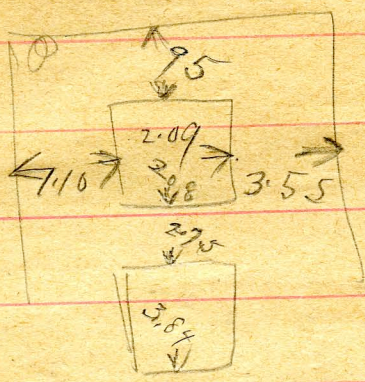


3035



3037

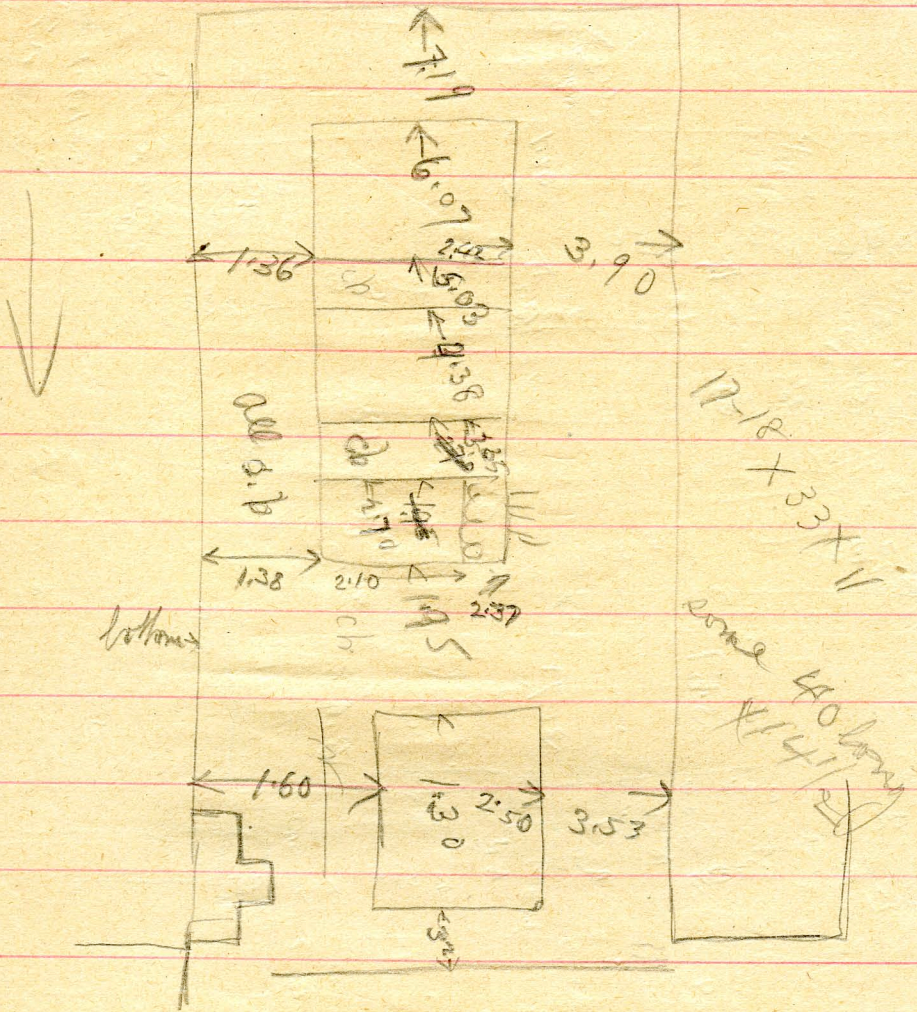




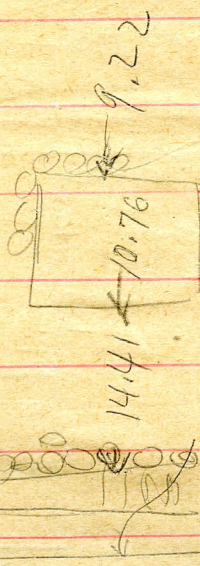
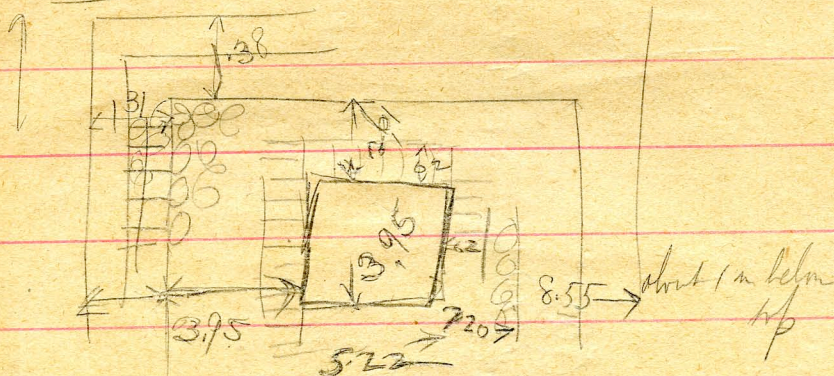
Ep 1403  
acc  
rubble



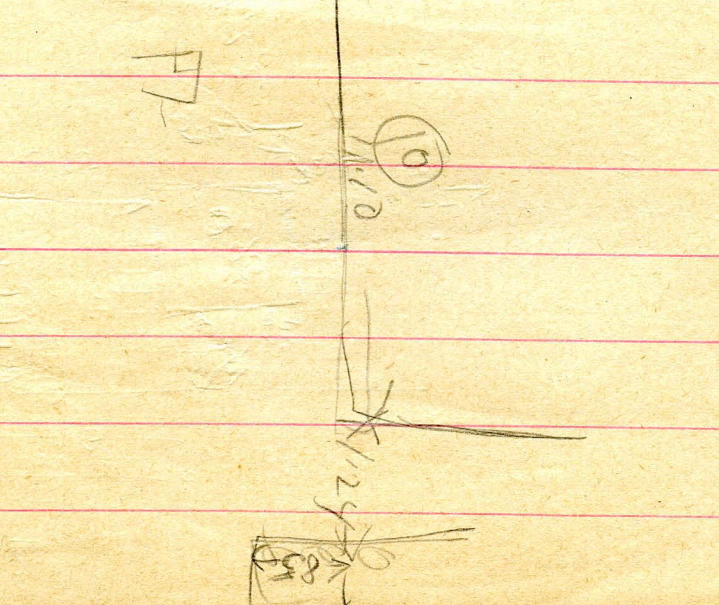
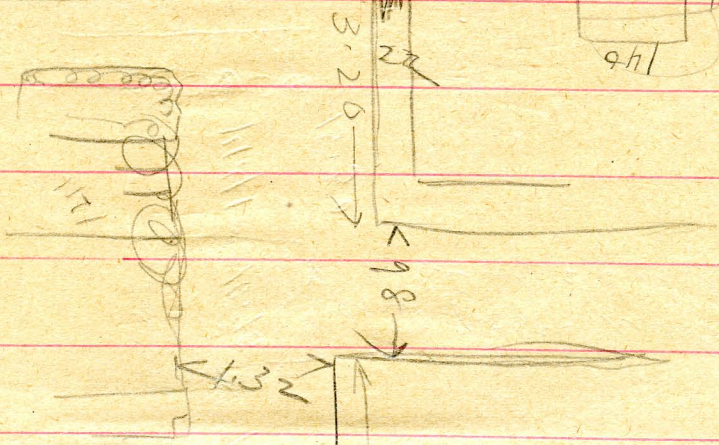
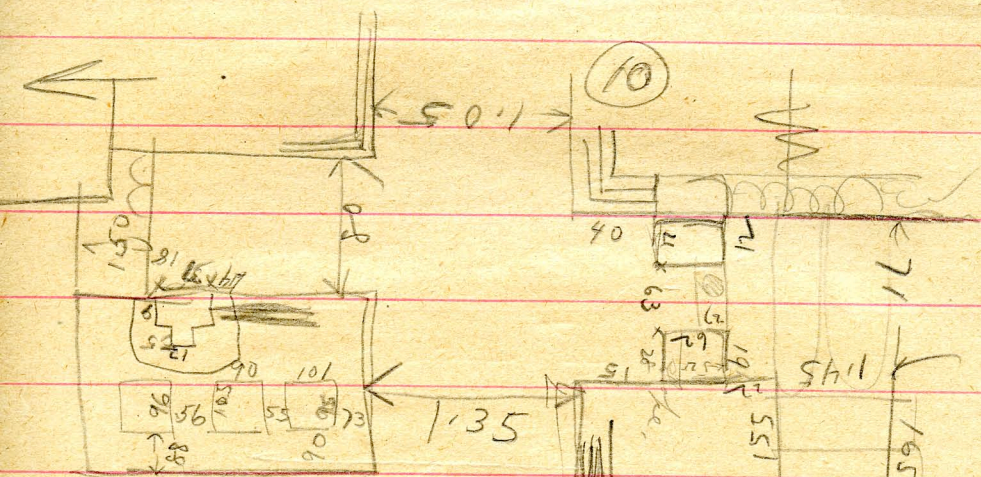
3009



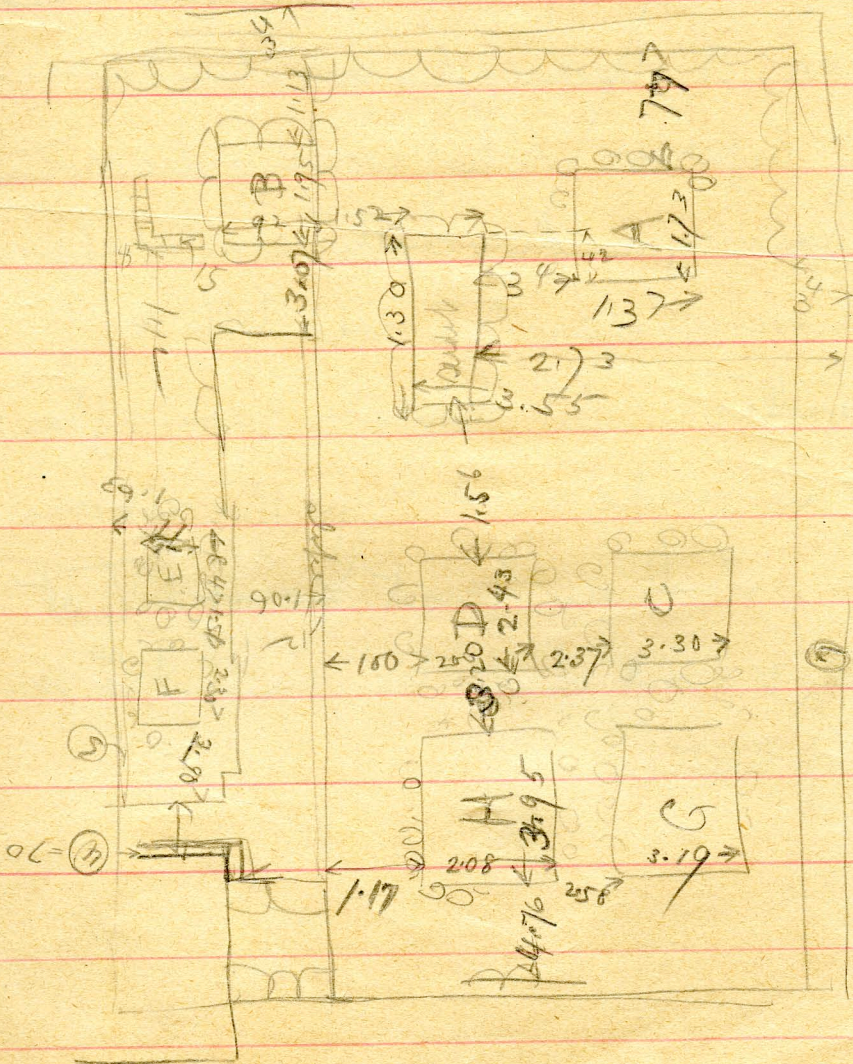
(3029)



32

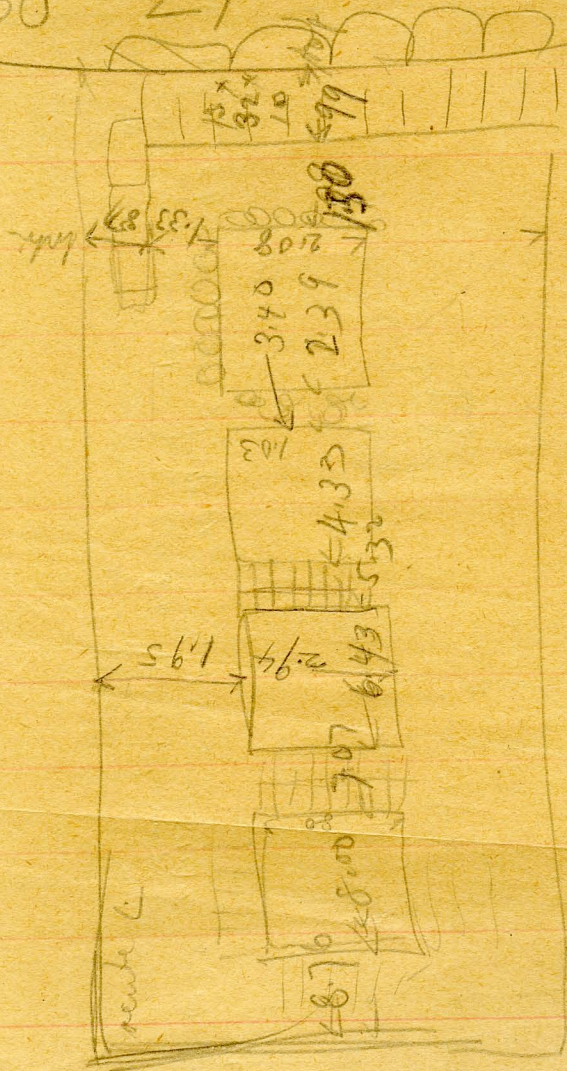


3021

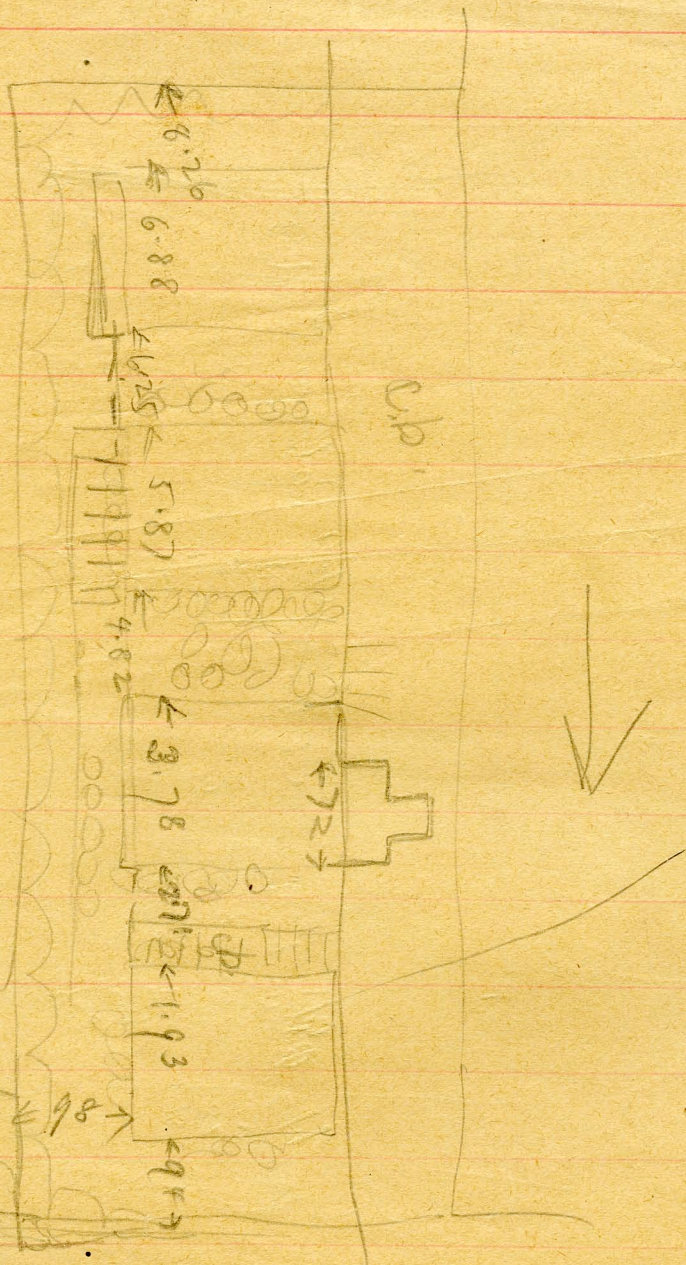


It came, however,  
After this went out & saw the remains  
of a temple on the outskirts of the village.  
This was pretty, crude work, & I should  
say quite late, perhaps Ptolemaic or  
Roman, it having an overabundance of  
very inferior relief work & decoration.  
It was very windy & dusty, so we returned  
to the house, where there was talk &  
cigarettes until lunch soon after 11.  
Then we made a run for the noon  
train, which we just caught, it  
having to wait about ten minutes for  
the up train.

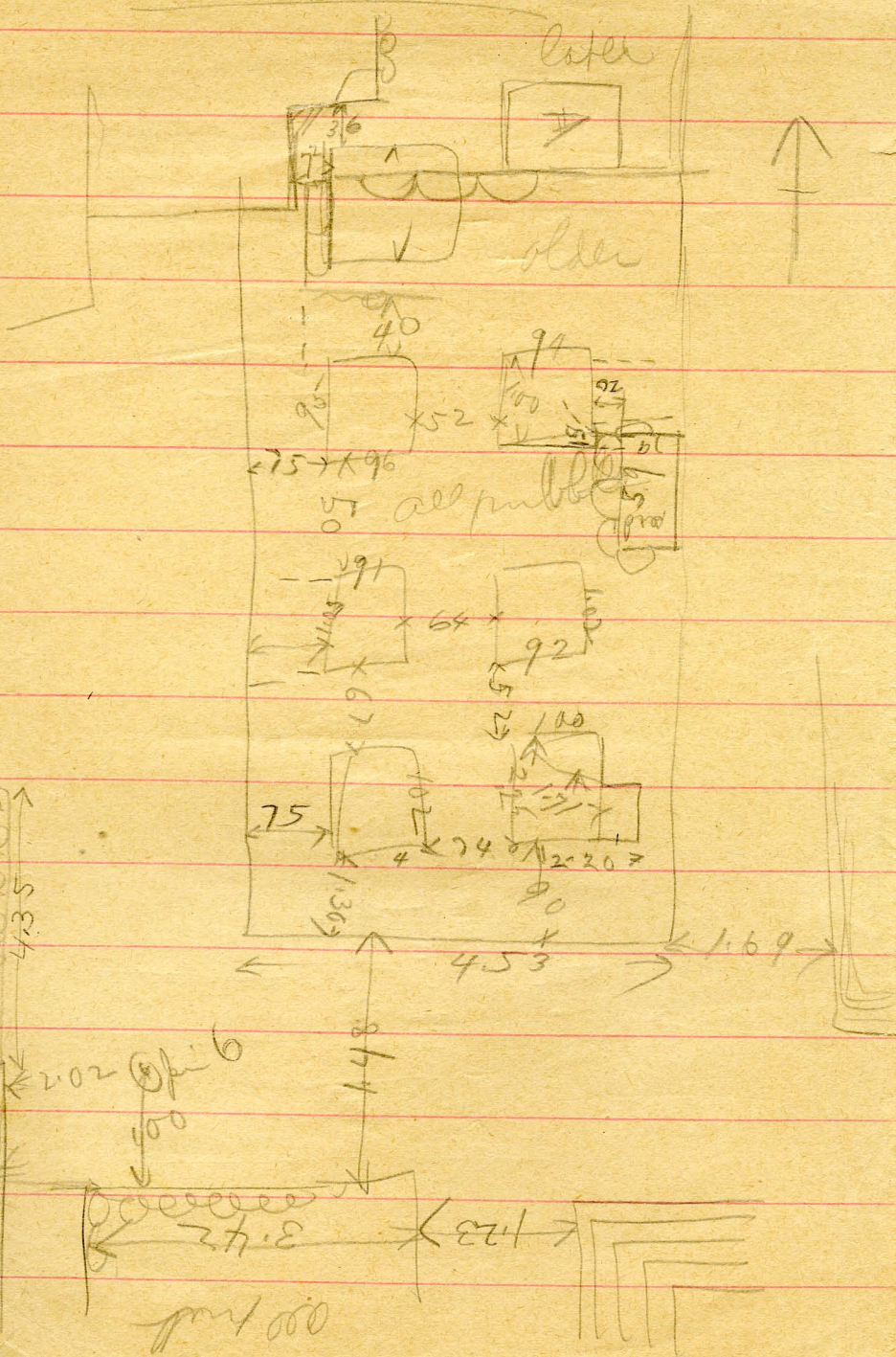
(30 21



3031



Must. 5. of 3000



3003

2096  
part  
made by  
131214

20 X 40 X 15

65

2.86

3.43

4.15

5.60

6.49

6.95

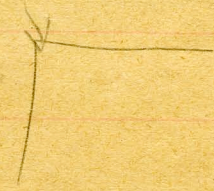
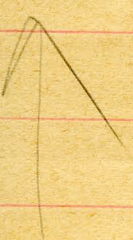
9.40

18 X 37 + 12-13

2095

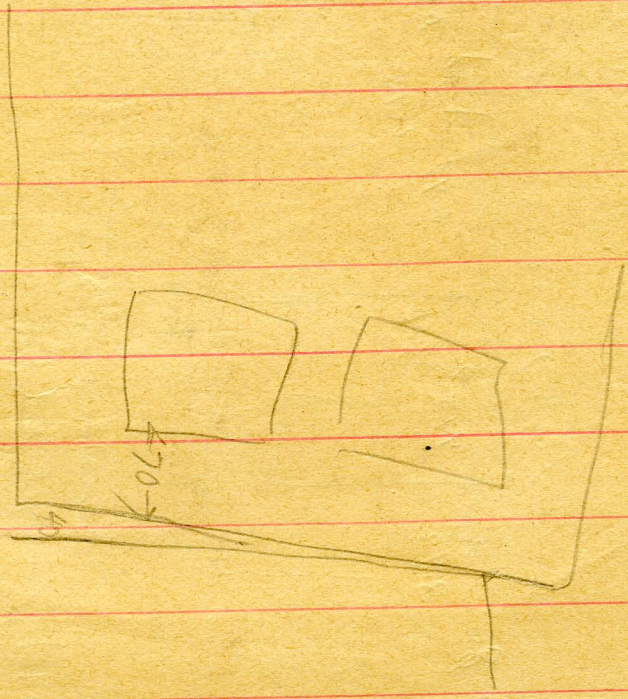
21 X 4 X 11

3002



2096

11

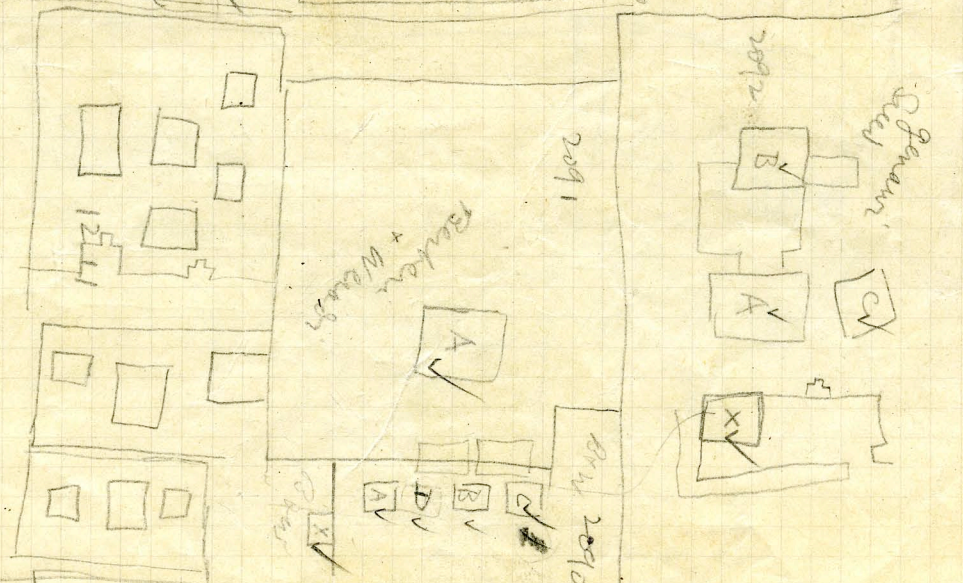
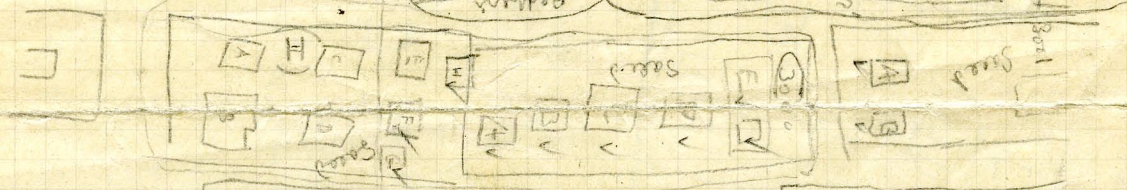
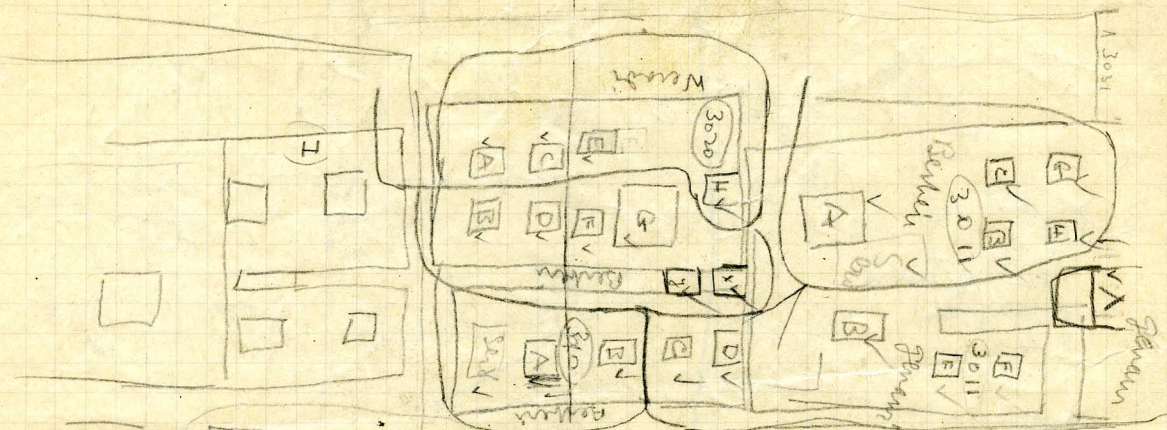


Bo 30

unf. 10/11  
unf. 10/11

Shirabel

||



large  
small  
2088



2072  
2084  
2085  
2086  
2087  
2088  
2089  
2090  
2091  
2092  
2093  
2094  
2095  
2096  
2097  
2098  
2099  
2100

41  
in off ch. of 2086

43 V 43 V

W. N. of 2086

83 a-b

M.F. angle  
below 2099-2097  
Gumam

2097 X

2094 X

(~~2080~~  
done)

↑  
Gumam

Benteng

Salle

Keradi

Benteng

Gumam

Benteng

Semb

2099

2084

2085

2086

2087

2088

2089

2090

2091

2092

2093

2094

2095

2096

2097

2098

2099

2100

2080

2081

2082

2083

2084

2085

2086

2087

2088

2089

2090

2091

2092

2093

2094

2095

2096

2097

2098

2080

2081

2082

2083

2084

2085

2086

2087

2088

2089

2090

2091

2092

2093

2094

2095

2096

2097

2098

2080

2081

2082

2083

2084

2085

2086

2087

2088

2089

2090

2091

2092

2093

2094

2095

2096

2097

2098

2080

2081

2082

2083

2084

2085

2086

2087

2088

2089

2090

2091

2092

2093

2094

2095

2096

2097

2098

2080

2081

2082

2083

2084

2085

2086

2087

2088

2089

2090

2091

2092

2093

2094

2095

2096

2097

2098

2080

2081

2082

2083

2084

2085

2086

2087

2088

2089

2090

2091

2092

2093

2094

2095

2096

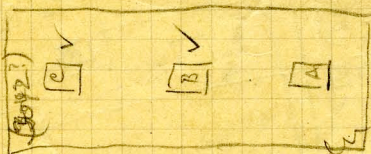
2097

2098

N

3030

all men



all men



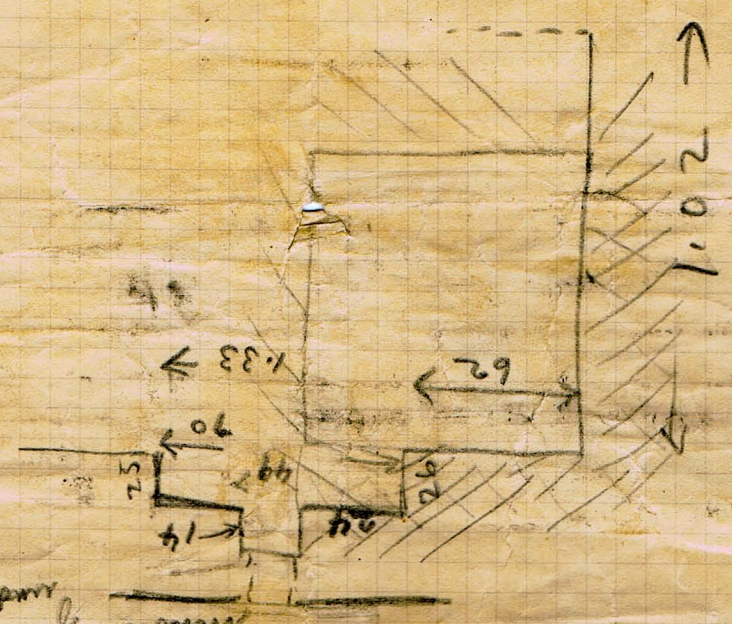
all men

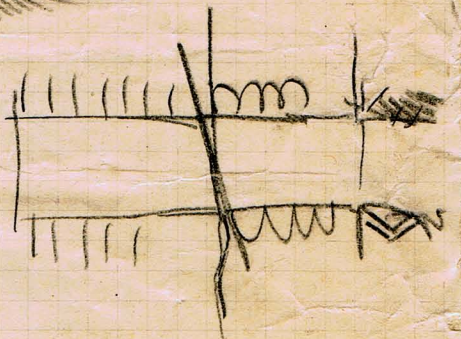


30111 Large  
Hand-drawn sketch  
of a window  
with dimensions  
and notes.

30111

Window  
with  
dimensions





10-115

