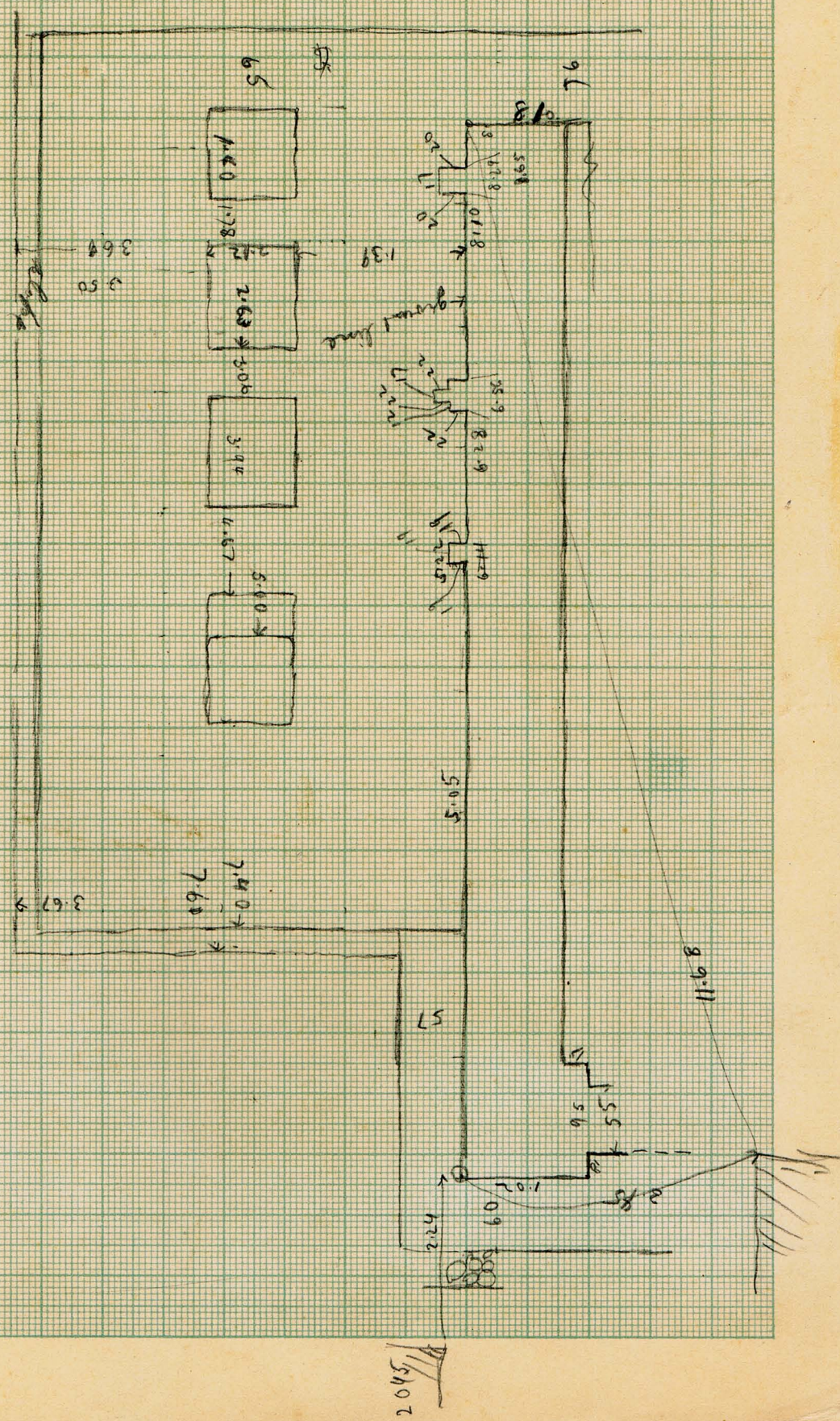
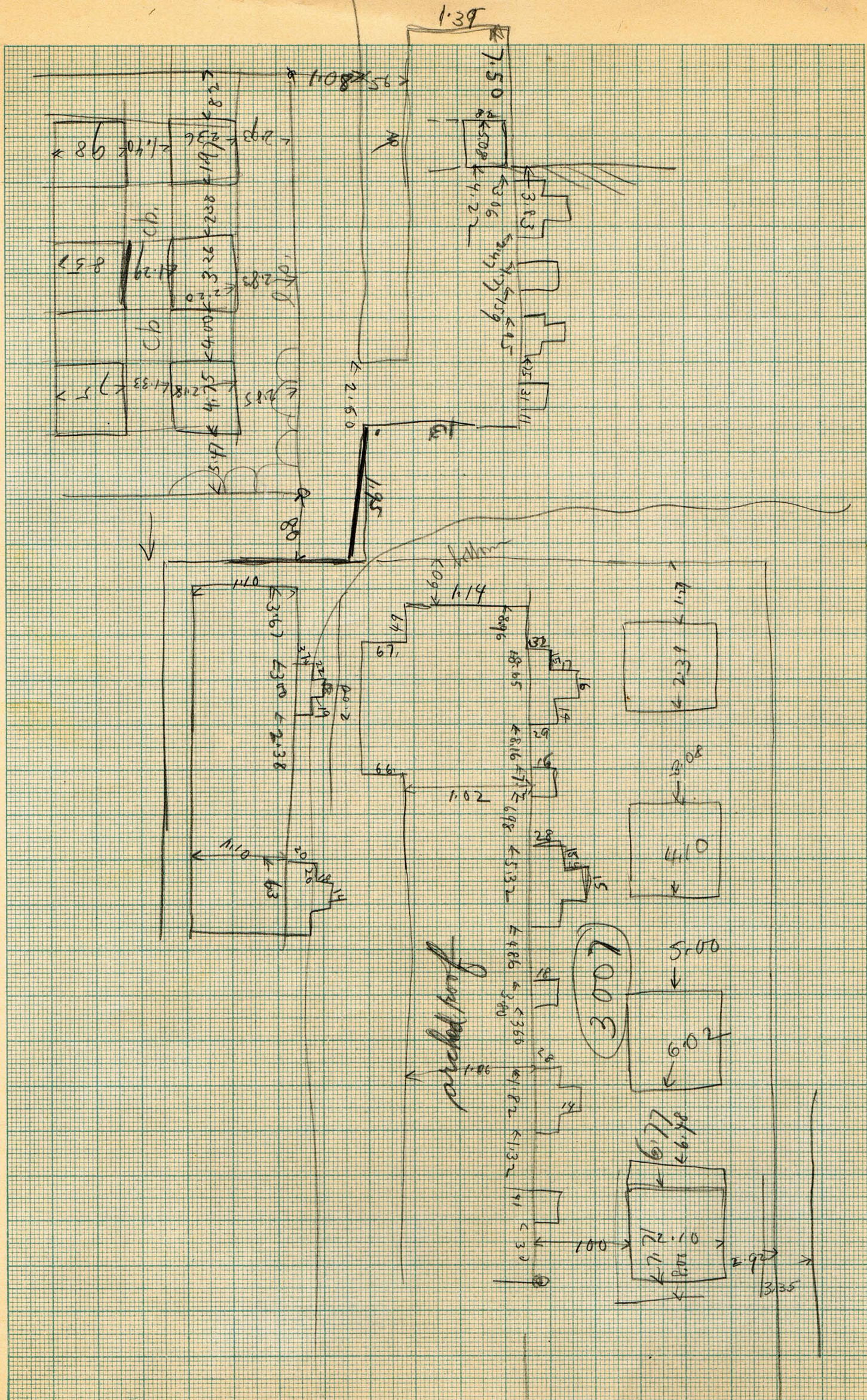


SIZA
MASTABA 209K

Nº 104 v GEBR. WICHMANN, BERLIN.



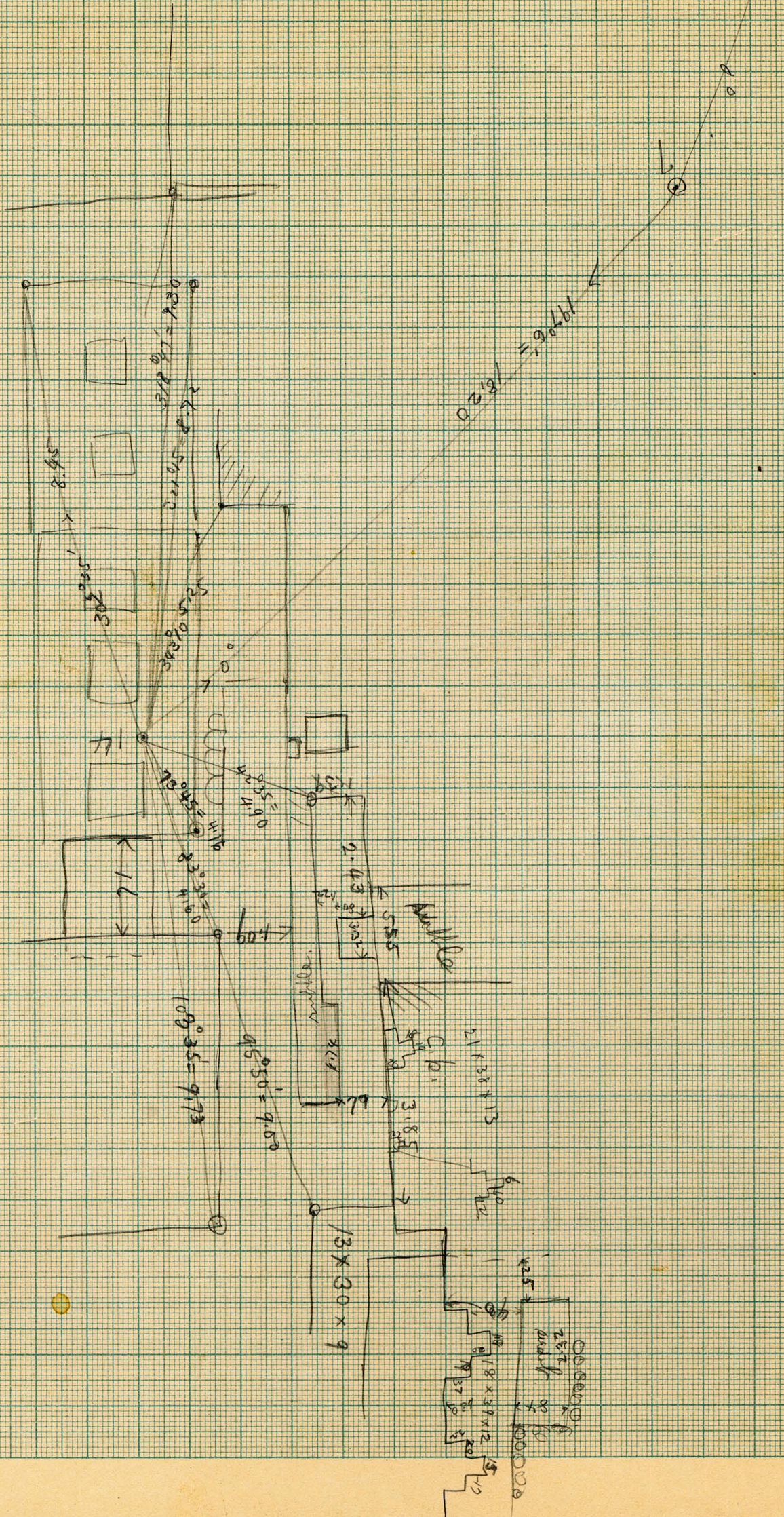
209K

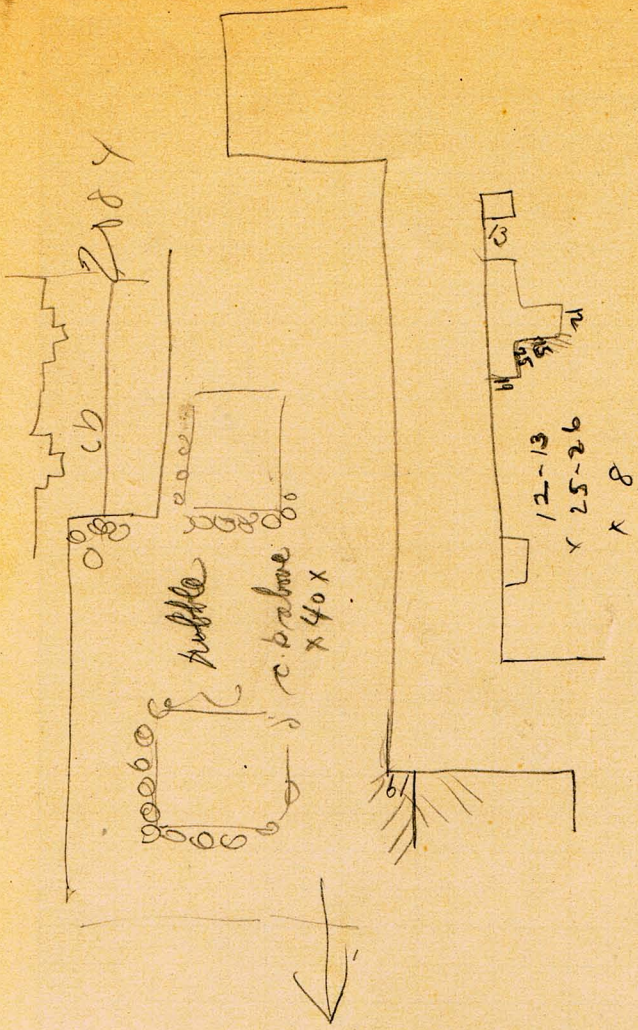


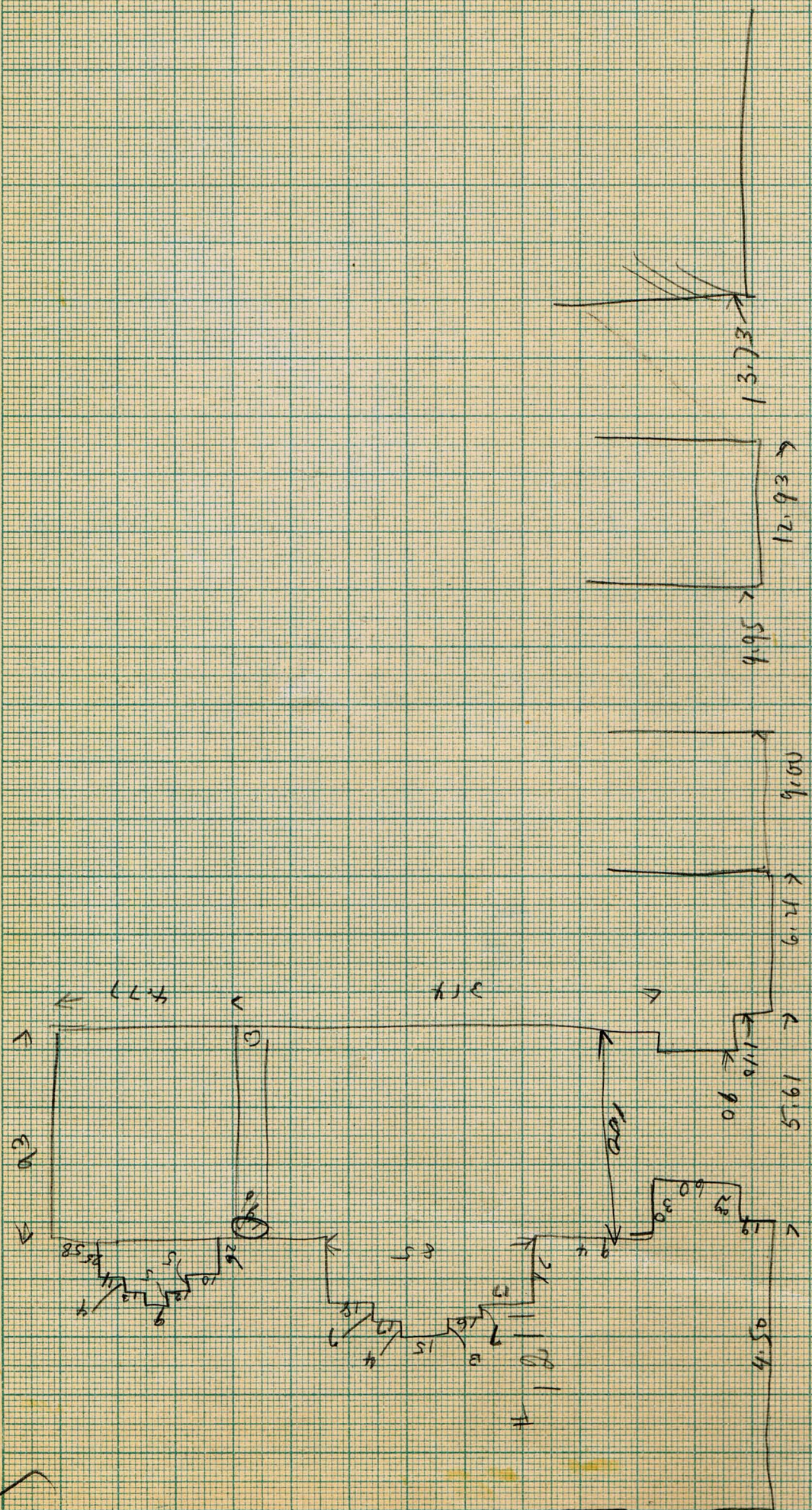
architectural floor plan

3007

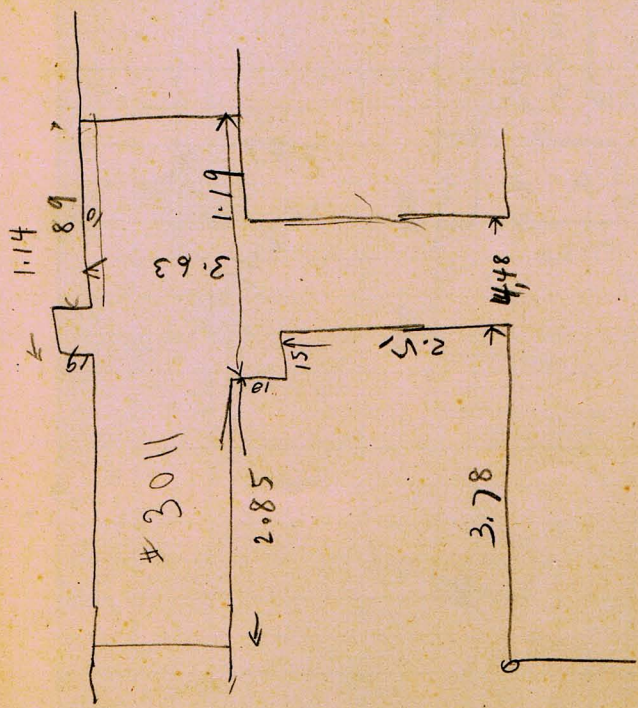
3.8
2.0
4

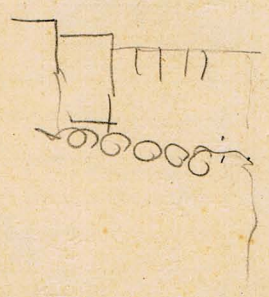
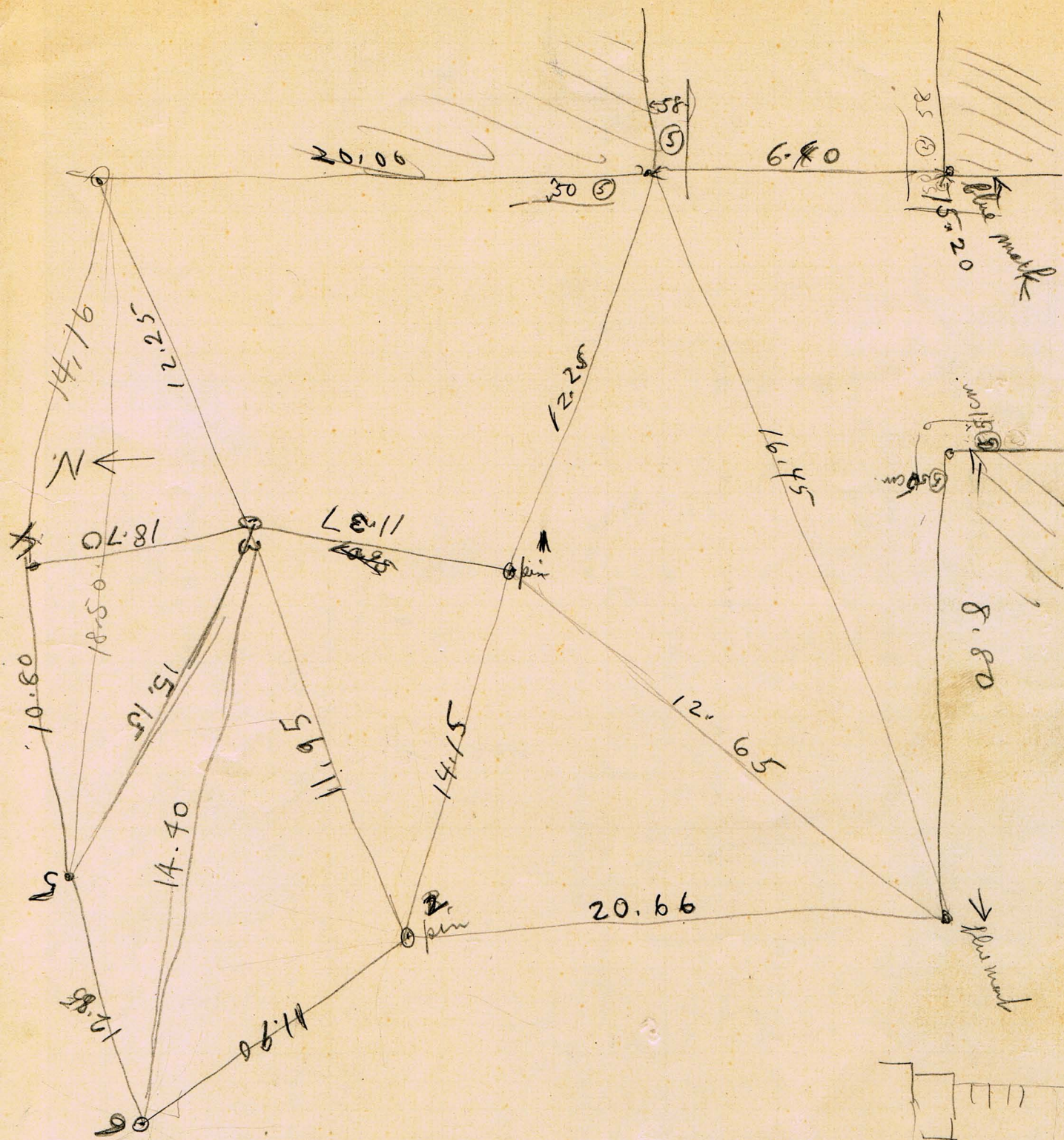






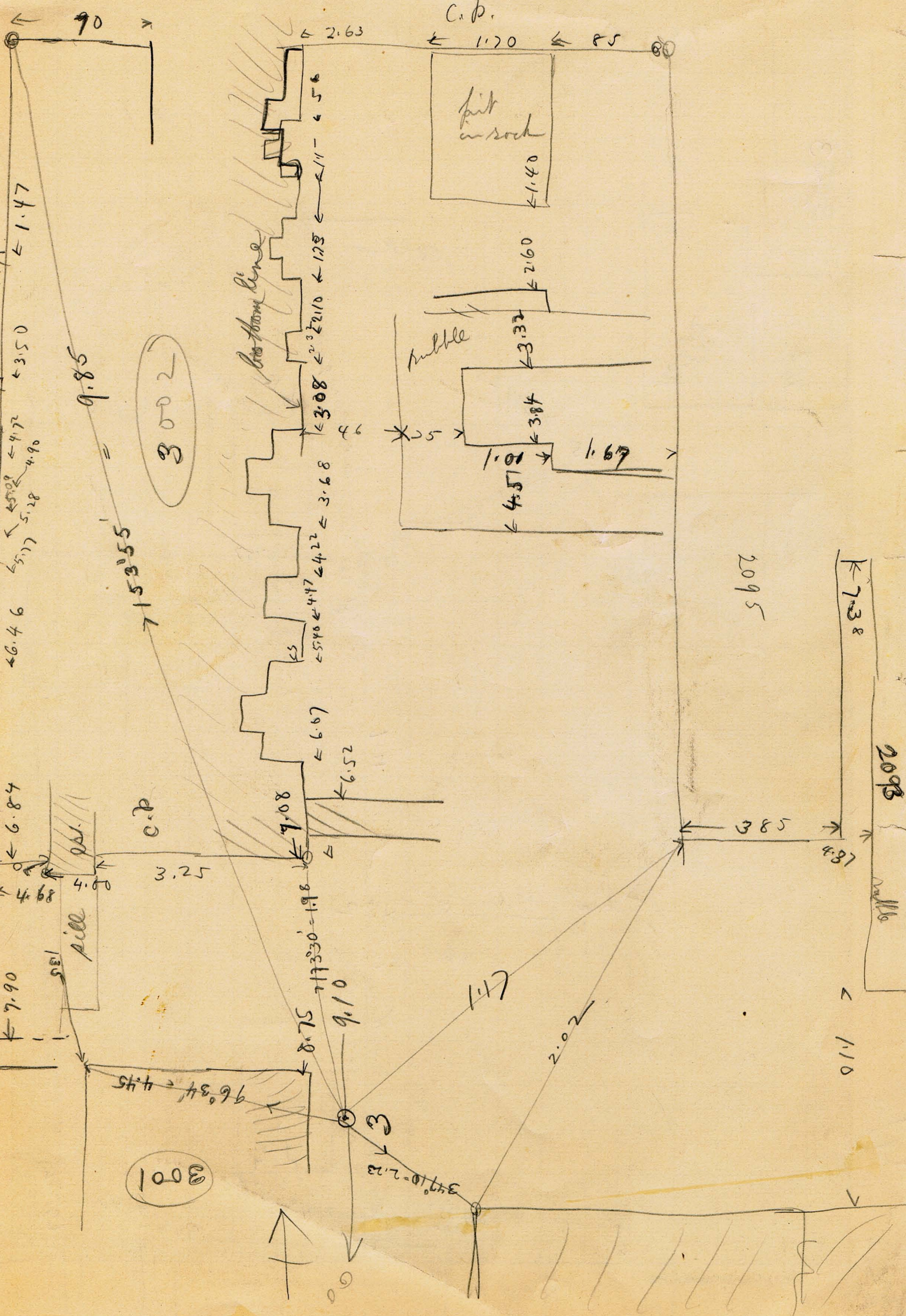
3





(2)

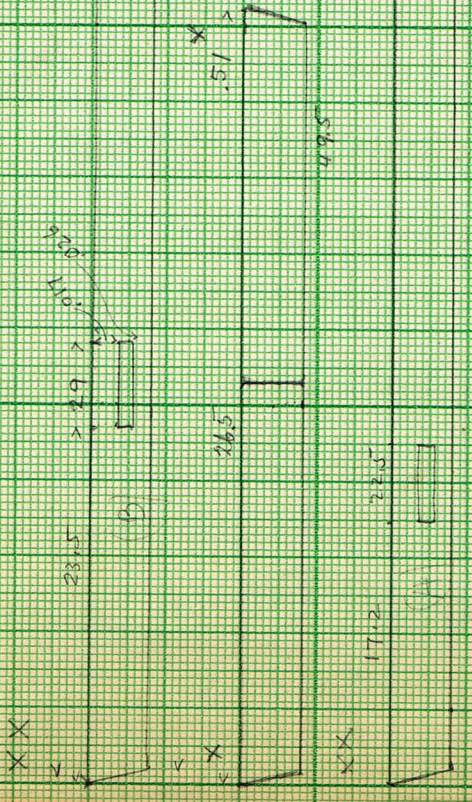
3003



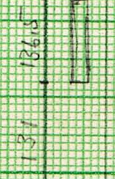
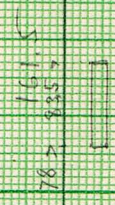
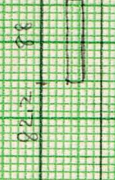
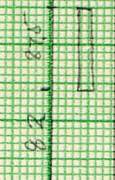
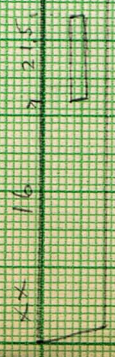
G 3041 A Warden Coffin

Scale 1:5

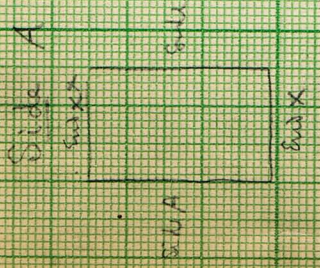
Bottom width 4 tim planks 24 cm thick; 60 mm on the 51 cm. (26.5 + 24.5) joined by 3 timbers in mortises. Sept 16 (1.5m) 157
 ends are butt-buttled
 = mortises; none at ends. Mortises 3 cm deep



Mortises between the two planks:



G 3041 A Wooden Coffin



Slide A

173 long, 5.5 cm. thick,

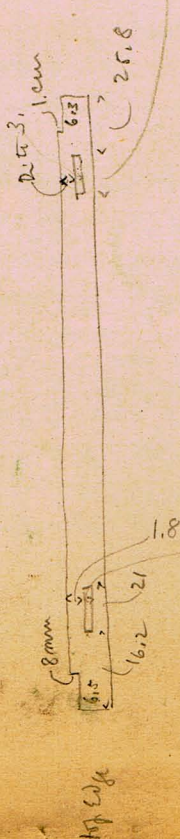
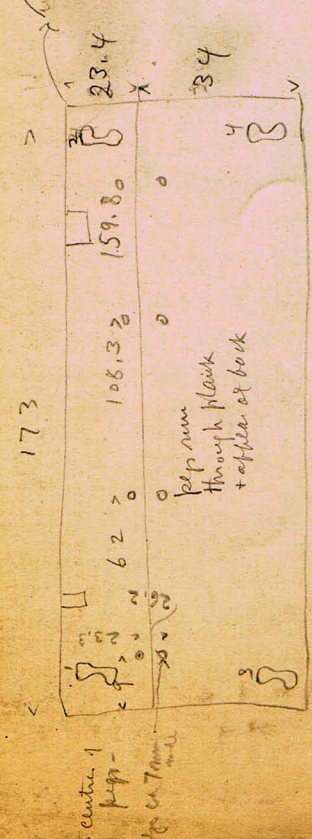
thin planks,

corner 34 high,

width of ca 8 mm between;

4 mortises & tenons, ^{thick} ends, ^{garden} by 2 round pits, one in each side.

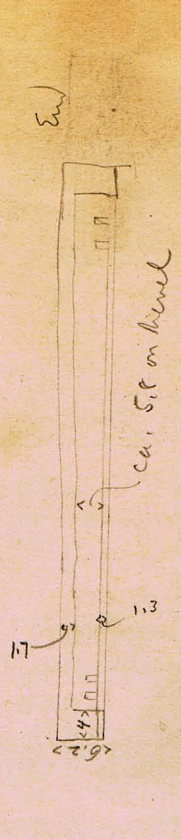
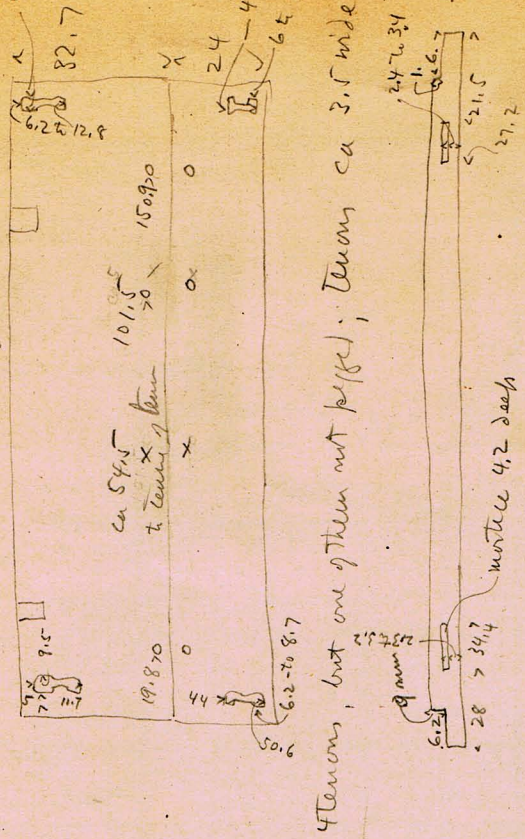
Side A
Tenons ca 3.5 wide



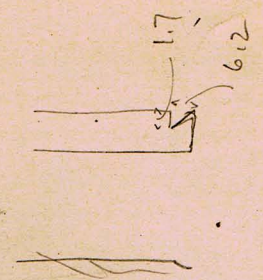
1. in 7.3 to 9.5 down 5. " 12.
2. in 7. to 9.3 down 6. " 11.8
3. in 6 to 8.5 up 5. " 12
4. in 6.4 to 8.8 up ? ? comb notched any

(pebbles ca 2.5 x 2.2)

Side B 172 long



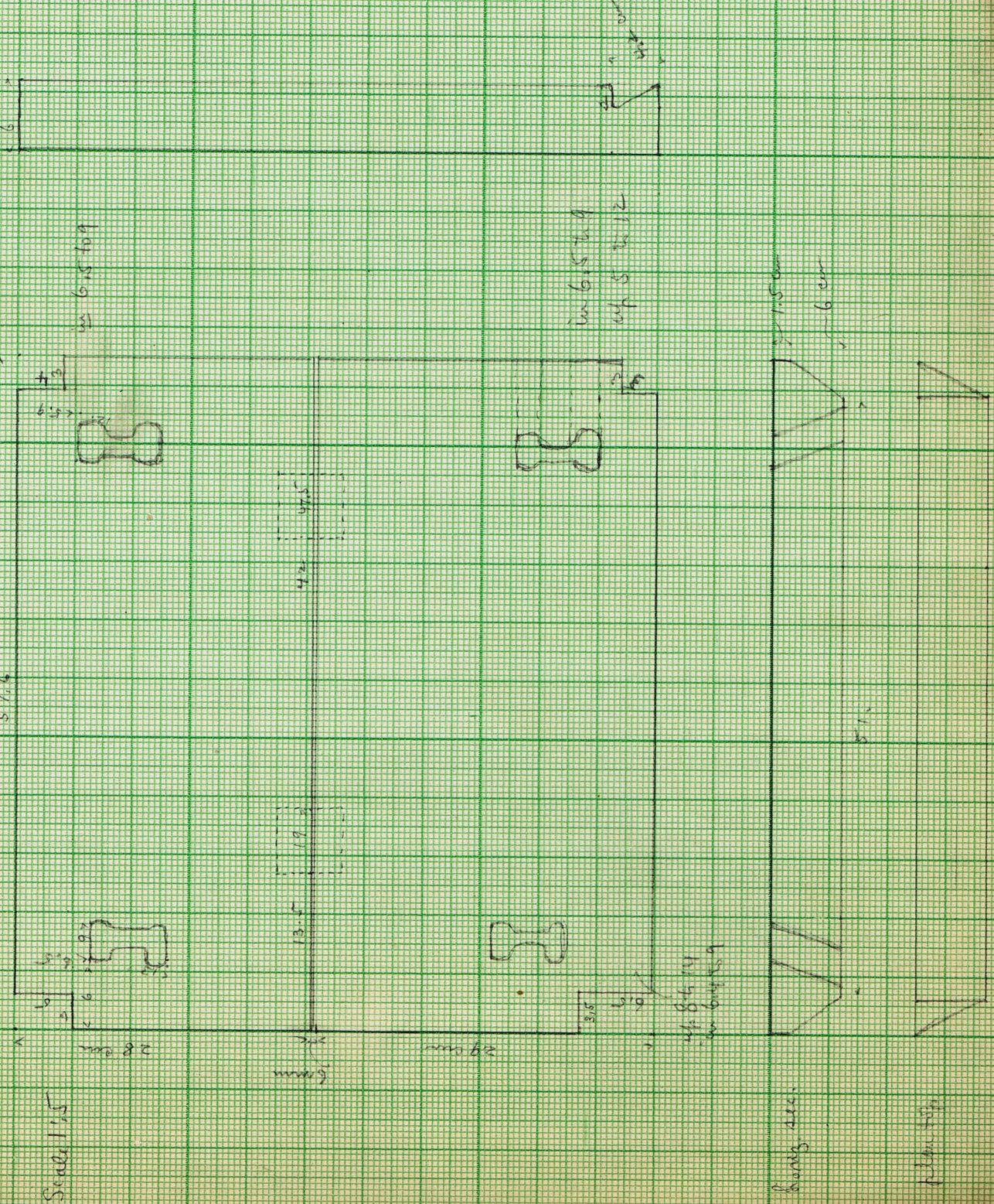
in bevelled face of 3 mortises measured from inside, not to left.
28.5 to 34, 76.5 to 82, 142.8 to 148.5
up for both 1.7 to 2.7; 2.6 deep



63041 A Wooden Coffin

X End piece made up of 2 planks, 6 cm thick, joined lengthwise + Tenons, longitudinally, and pinned to add piece to 8 pegs. Two in each of the four corners. Plank 29 and 28 high, space of 6 mm between, at present = 57.6 cm ht.

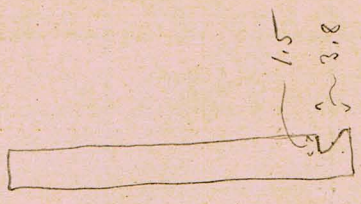
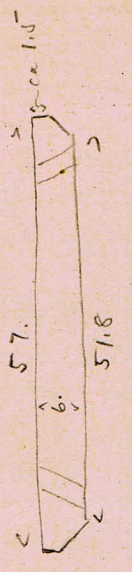
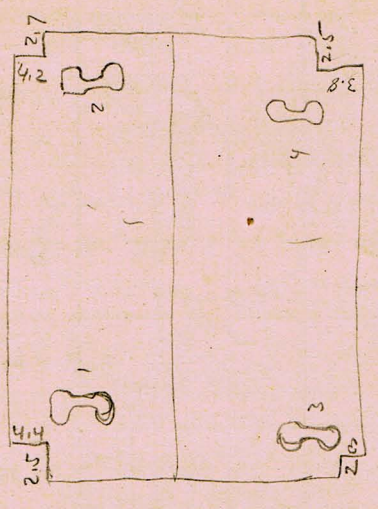
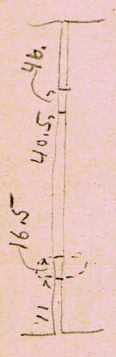
Vertical edges beveled. Width of end 57.6 outside; 51 inside. After insertion of pegs: hole was filled with white lime cement



Side view of coffin

(over)

XX End piece 57×57 cm high, of two planks, lower 31.5 h., upper 25.5 ; 6 cm thick; joined by two
 tenon + mortise joints



1, dann 5.5 to 12 ,
in 6 " 8.5

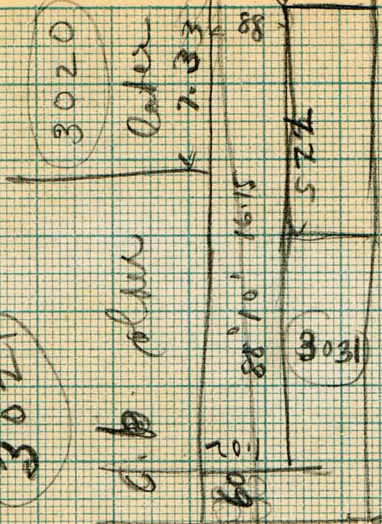
2, dann 5.3 to 12.2
in 6.3 " 8.8

3. ~~then~~ 4.5 to 10.5
in 6 " 8.5

4. ~~then~~ 4.5 to 11.5
in 6.3 " 8.8

20

27 March 1920. R. S. Bunker. Ark.



3021

c.b. plan

