

GRID # 10

0 5 10 M



100 101 102 103 104 105 106 107 108 109 110 111 112 113 114 115 116 117 118 119 120 121 122 123 124 125 126 127 128 129 130 131 132 133 134 135 136 137 138 139 140 141 142 143 144 145 146 147 148 149 150 151 152 153 154 155 156 157 158 159 160 161 162 163 164 165 166 167 168 169 170 171 172 173 174 175 176 177 178 179 180 181 182 183 184 185 186 187 188 189 190 191 192 193 194 195 196 197 198 199 200



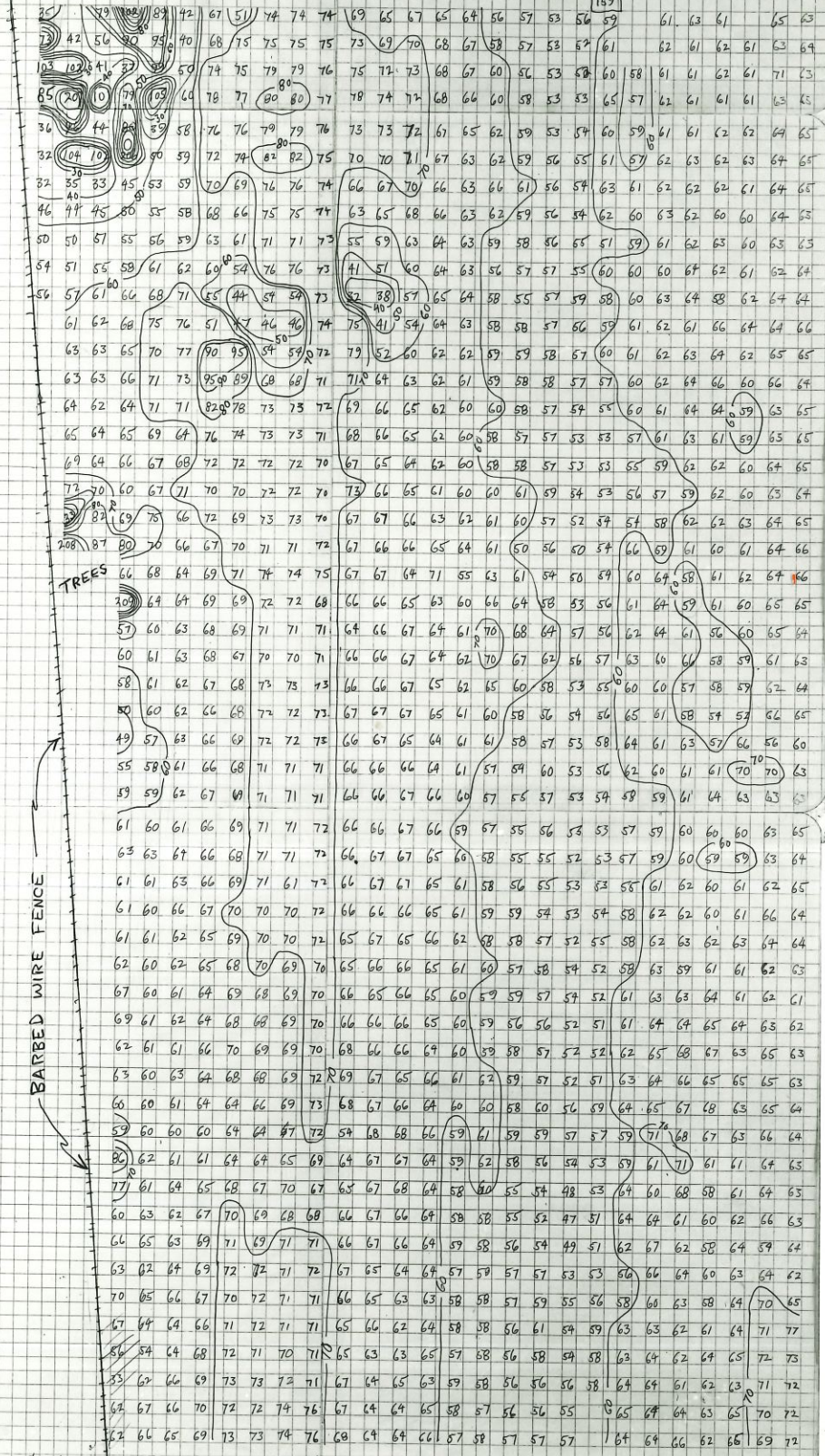
GRID #11



N

8 M

P.M. 159

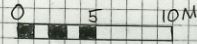


TREES

BARBED WIRE FENCE

3/16/69 G#11 cont. 1174 1175 1176 1177 1178 1179 1180 1181 1182 1183 1184 1185 1186 1187 1188 1189 1190 1191 1192 1193 1194 1195 1196 1197 1198 1199 1200

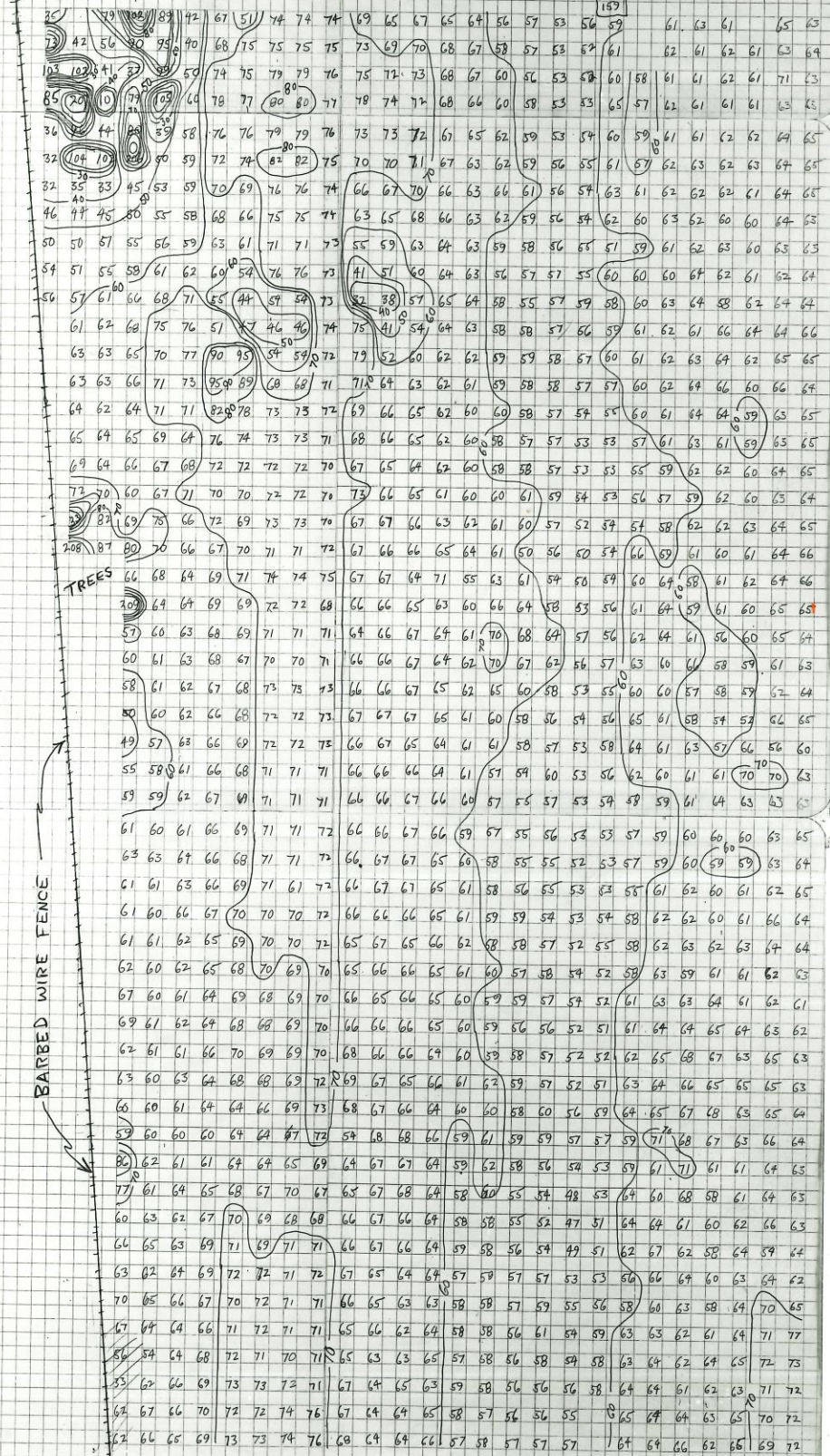
GRID # 11



8 M

N

P.M. 159



3/6/69 G-11 cont. 1171 1172 1173 1174 1175 1176 1177 1178 1179 1180 1181 1182 1183 1184 1185 1186 1187 1188 1189 1190 1191 1192 1193 1194 1195 1196 1197 1198 1199 1200

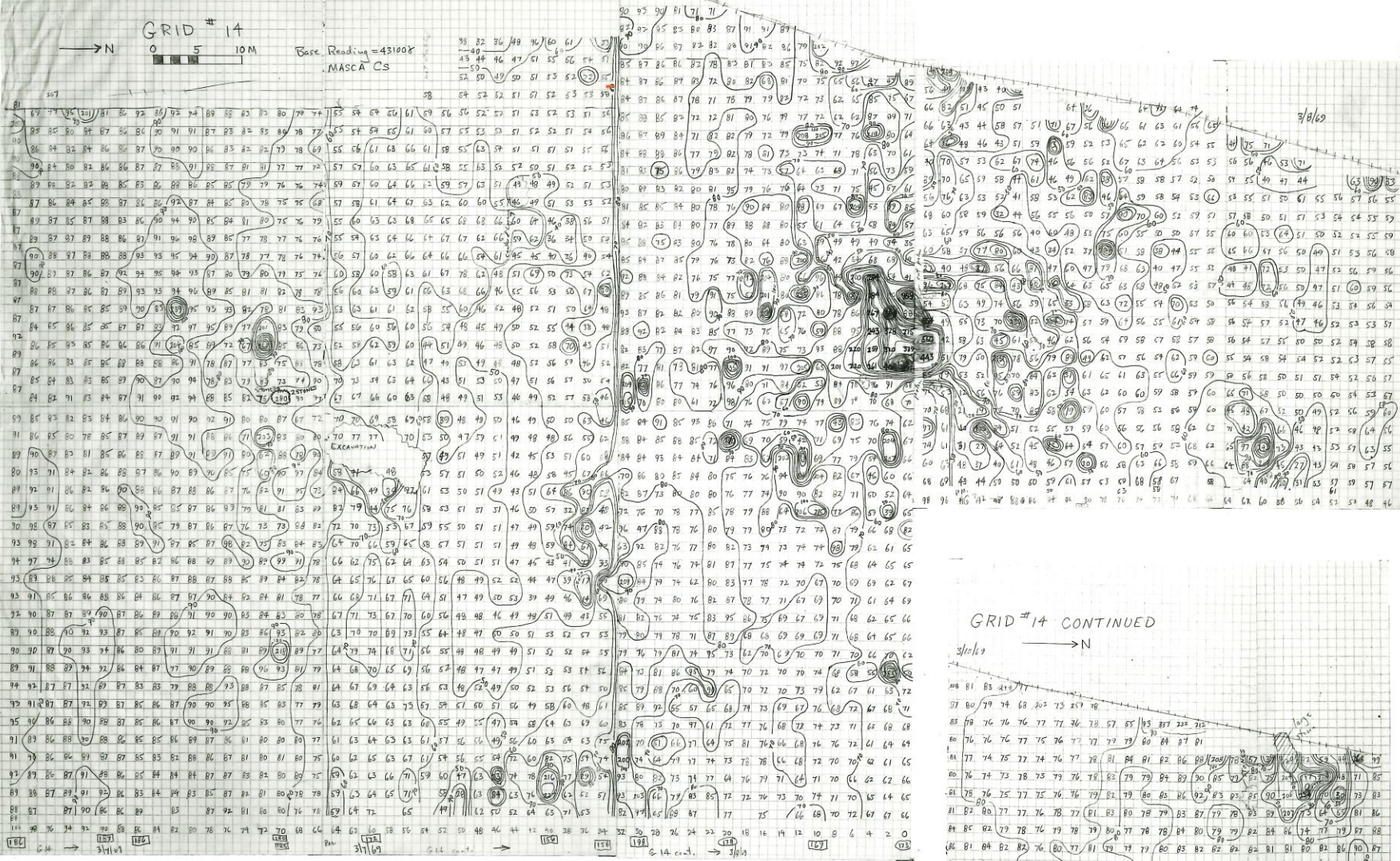




GRID # 14

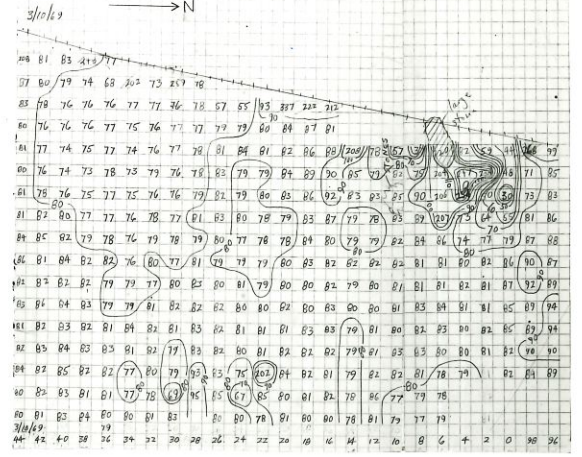
→ N  
0 5 10M

Base Reading = 431008  
MASCA CS



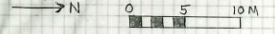
GRID # 14 CONTINUED

→ N

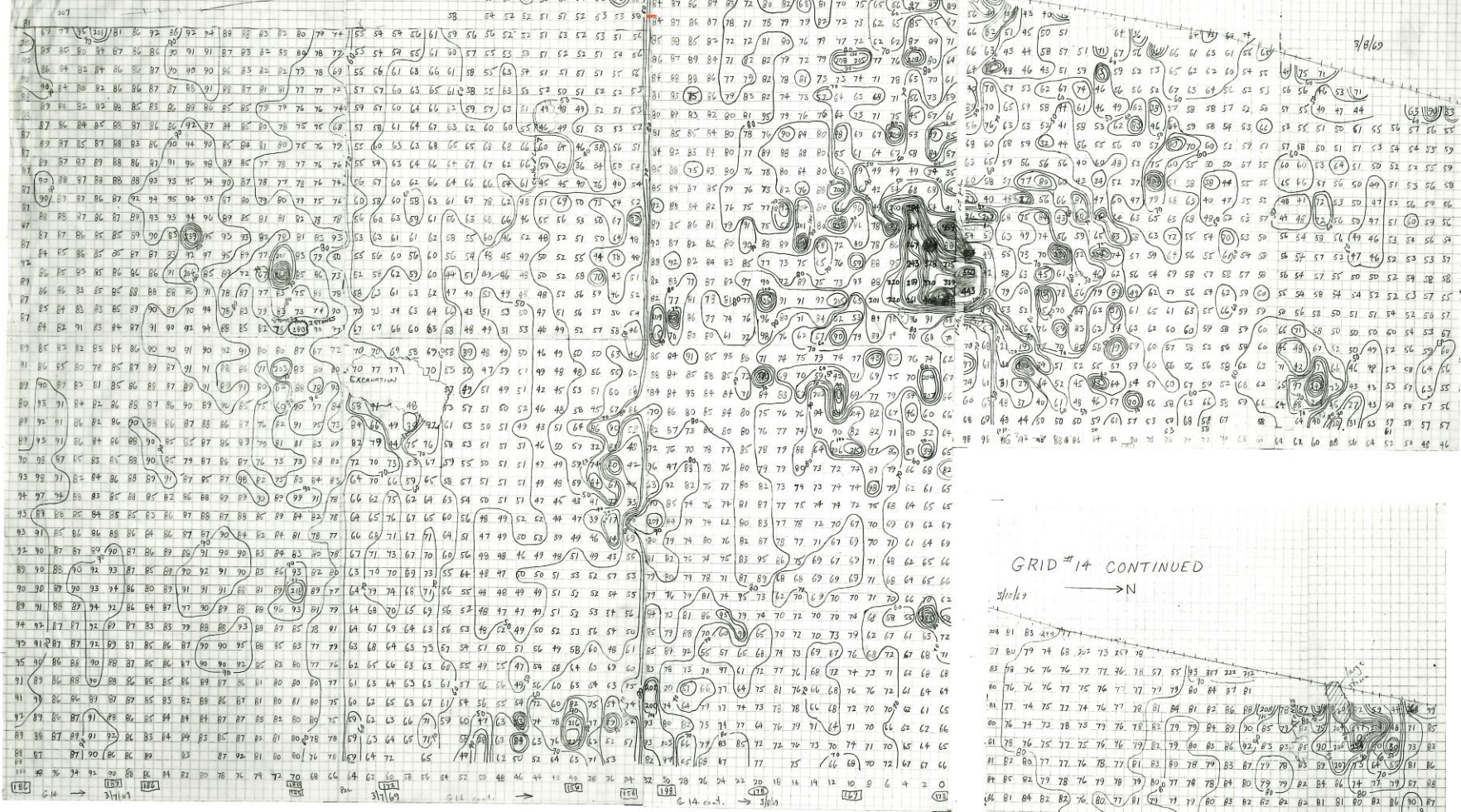




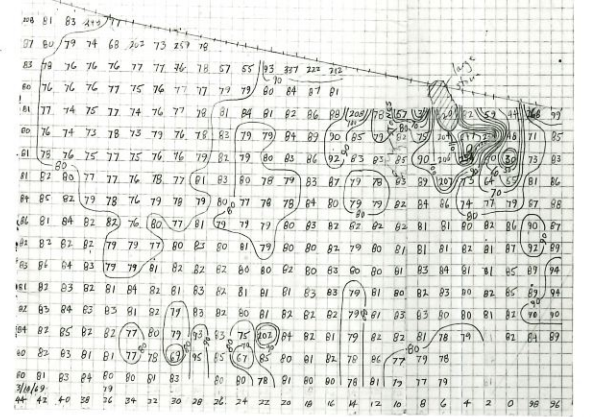
GRID # 14

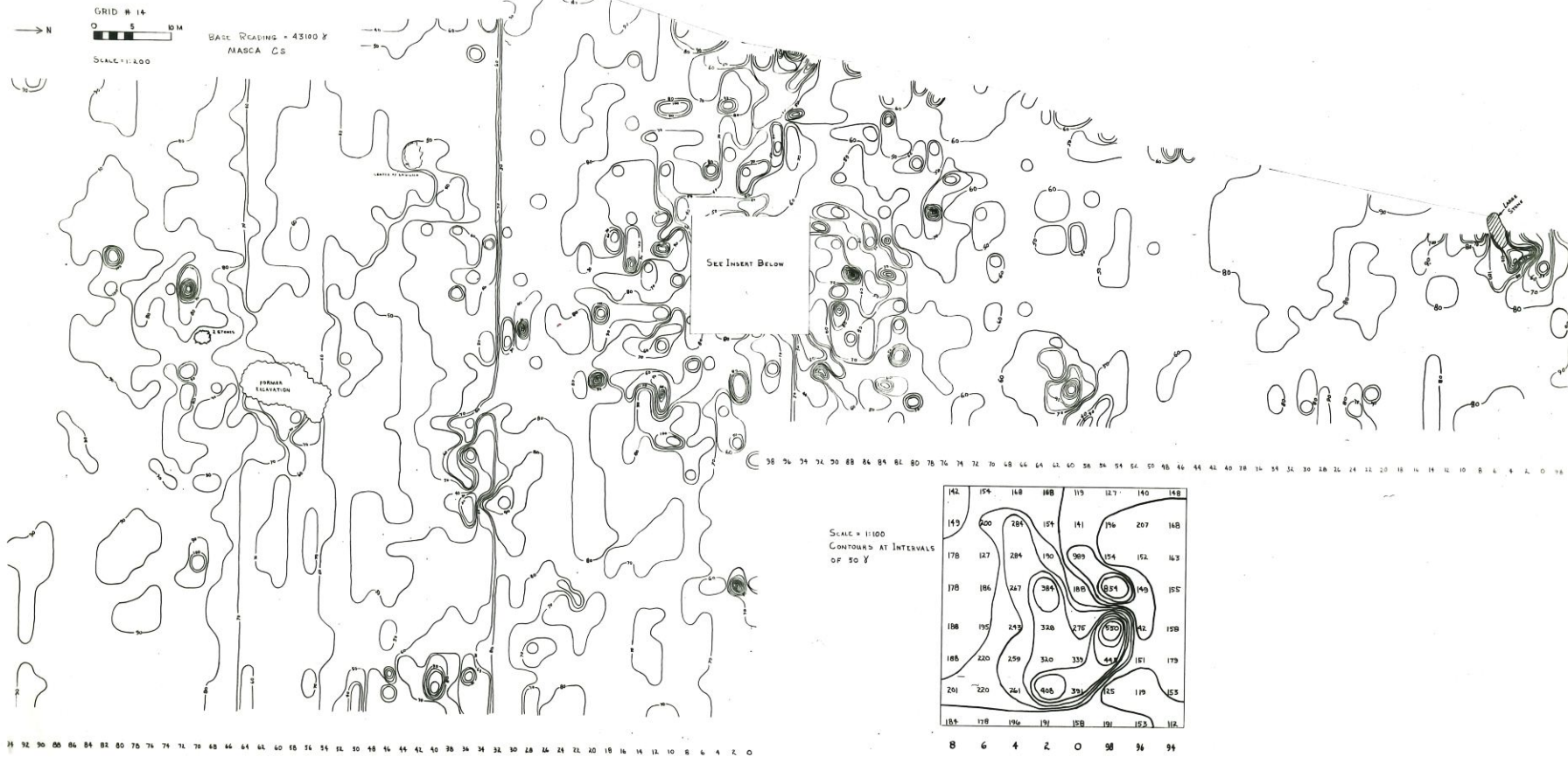


Base Reading = 431008  
MASCA CS



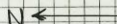
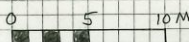
GRID # 14 CONTINUED



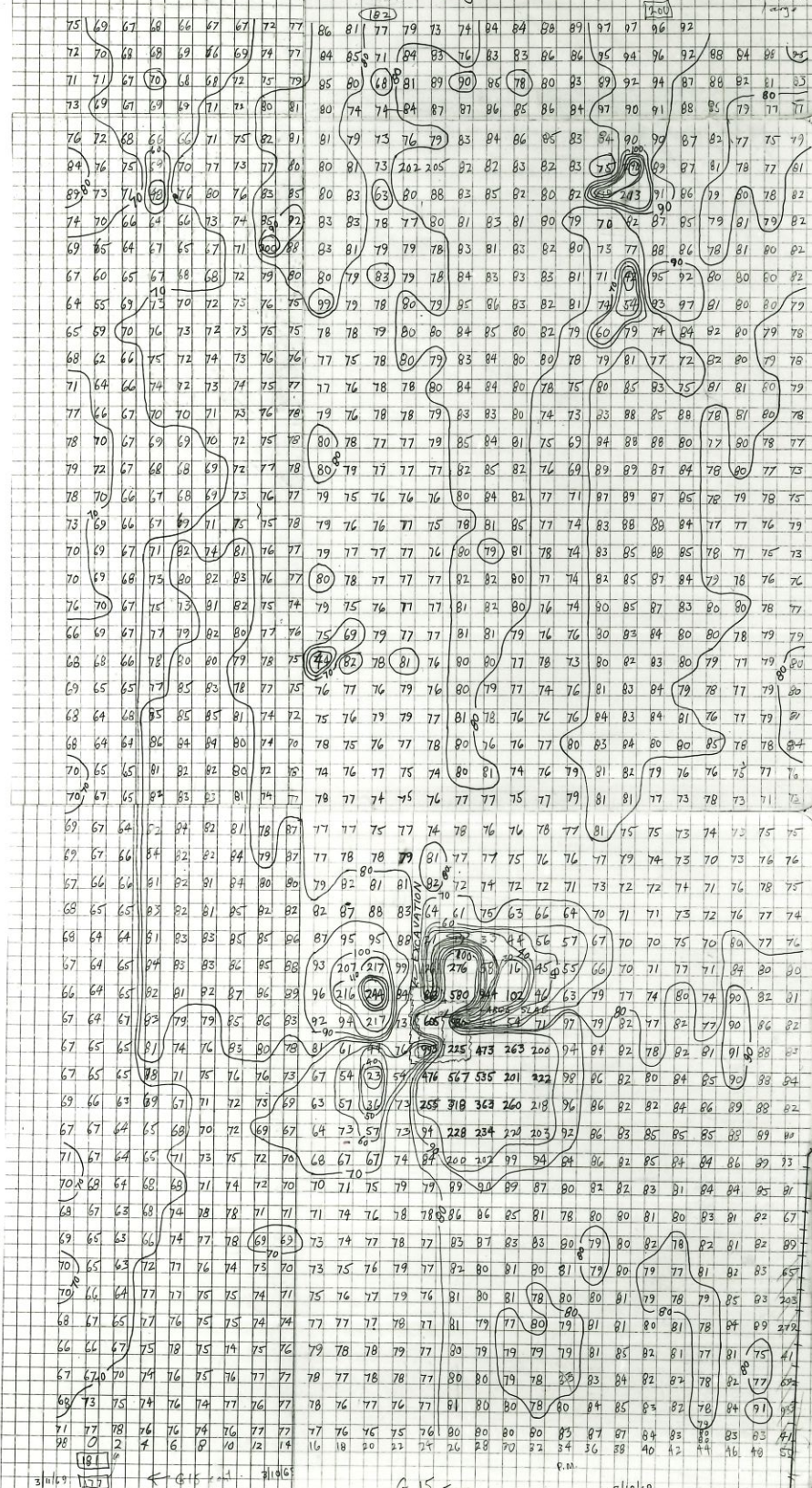


8 6 4 2 0 58 36 99

GRID # 15

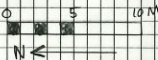


Not all contours are drawn for anomaly over large slab.





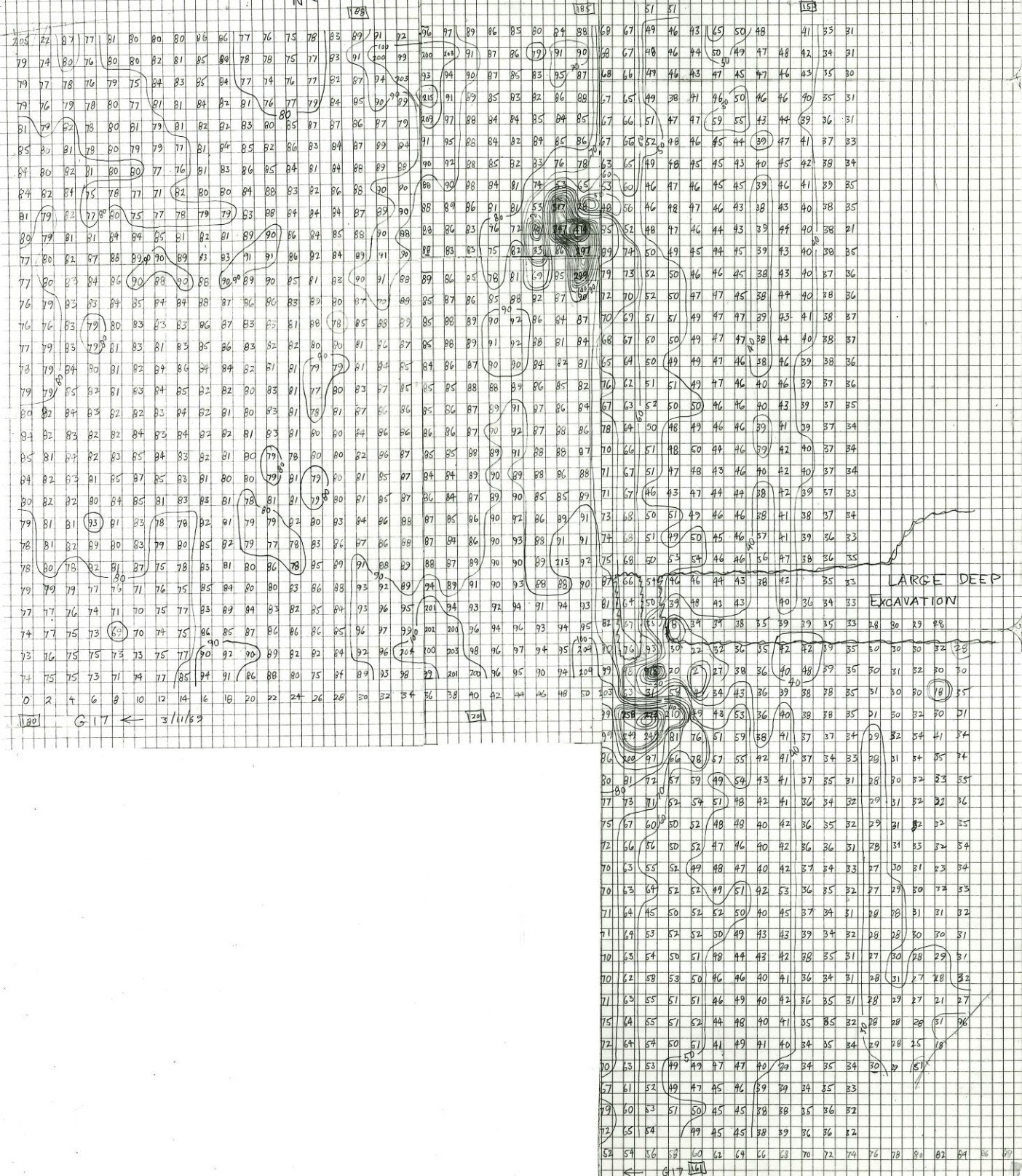
GRID #16



61	61	62	63	64	65	66	67	68	69	70	71	72	73	74	75	76	77	78	79	80	81	82	83	84	85	86	87	88	89	90	91	92	93	94	95	96	97	98	99	100
62	62	63	64	65	66	67	68	69	70	71	72	73	74	75	76	77	78	79	80	81	82	83	84	85	86	87	88	89	90	91	92	93	94	95	96	97	98	99	100	
63	63	64	65	66	67	68	69	70	71	72	73	74	75	76	77	78	79	80	81	82	83	84	85	86	87	88	89	90	91	92	93	94	95	96	97	98	99	100		
64	64	65	66	67	68	69	70	71	72	73	74	75	76	77	78	79	80	81	82	83	84	85	86	87	88	89	90	91	92	93	94	95	96	97	98	99	100			
65	65	66	67	68	69	70	71	72	73	74	75	76	77	78	79	80	81	82	83	84	85	86	87	88	89	90	91	92	93	94	95	96	97	98	99	100				
66	66	67	68	69	70	71	72	73	74	75	76	77	78	79	80	81	82	83	84	85	86	87	88	89	90	91	92	93	94	95	96	97	98	99	100					
67	67	68	69	70	71	72	73	74	75	76	77	78	79	80	81	82	83	84	85	86	87	88	89	90	91	92	93	94	95	96	97	98	99	100						
68	68	69	70	71	72	73	74	75	76	77	78	79	80	81	82	83	84	85	86	87	88	89	90	91	92	93	94	95	96	97	98	99	100							
69	69	70	71	72	73	74	75	76	77	78	79	80	81	82	83	84	85	86	87	88	89	90	91	92	93	94	95	96	97	98	99	100								
70	70	71	72	73	74	75	76	77	78	79	80	81	82	83	84	85	86	87	88	89	90	91	92	93	94	95	96	97	98	99	100									
71	71	72	73	74	75	76	77	78	79	80	81	82	83	84	85	86	87	88	89	90	91	92	93	94	95	96	97	98	99	100										
72	72	73	74	75	76	77	78	79	80	81	82	83	84	85	86	87	88	89	90	91	92	93	94	95	96	97	98	99	100											
73	73	74	75	76	77	78	79	80	81	82	83	84	85	86	87	88	89	90	91	92	93	94	95	96	97	98	99	100												
74	74	75	76	77	78	79	80	81	82	83	84	85	86	87	88	89	90	91	92	93	94	95	96	97	98	99	100													
75	75	76	77	78	79	80	81	82	83	84	85	86	87	88	89	90	91	92	93	94	95	96	97	98	99	100														
76	76	77	78	79	80	81	82	83	84	85	86	87	88	89	90	91	92	93	94	95	96	97	98	99	100															
77	77	78	79	80	81	82	83	84	85	86	87	88	89	90	91	92	93	94	95	96	97	98	99	100																
78	78	79	80	81	82	83	84	85	86	87	88	89	90	91	92	93	94	95	96	97	98	99	100																	
79	79	80	81	82	83	84	85	86	87	88	89	90	91	92	93	94	95	96	97	98	99	100																		
80	80	81	82	83	84	85	86	87	88	89	90	91	92	93	94	95	96	97	98	99	100																			
81	81	82	83	84	85	86	87	88	89	90	91	92	93	94	95	96	97	98	99	100																				
82	82	83	84	85	86	87	88	89	90	91	92	93	94	95	96	97	98	99	100																					
83	83	84	85	86	87	88	89	90	91	92	93	94	95	96	97	98	99	100																						
84	84	85	86	87	88	89	90	91	92	93	94	95	96	97	98	99	100																							
85	85	86	87	88	89	90	91	92	93	94	95	96	97	98	99	100																								
86	86	87	88	89	90	91	92	93	94	95	96	97	98	99	100																									
87	87	88	89	90	91	92	93	94	95	96	97	98	99	100																										
88	88	89	90	91	92	93	94	95	96	97	98	99	100																											
89	89	90	91	92	93	94	95	96	97	98	99	100																												
90	90	91	92	93	94	95	96	97	98	99	100																													



GRID # 17



G-17 ← 3/11/63

200

LARGE DEEP EXCAVATION

G-17

GRID # 17



G 17 ← 3/11/53

LARGE DEEP EXCAVATION

G 17 ←

# GRID # 17

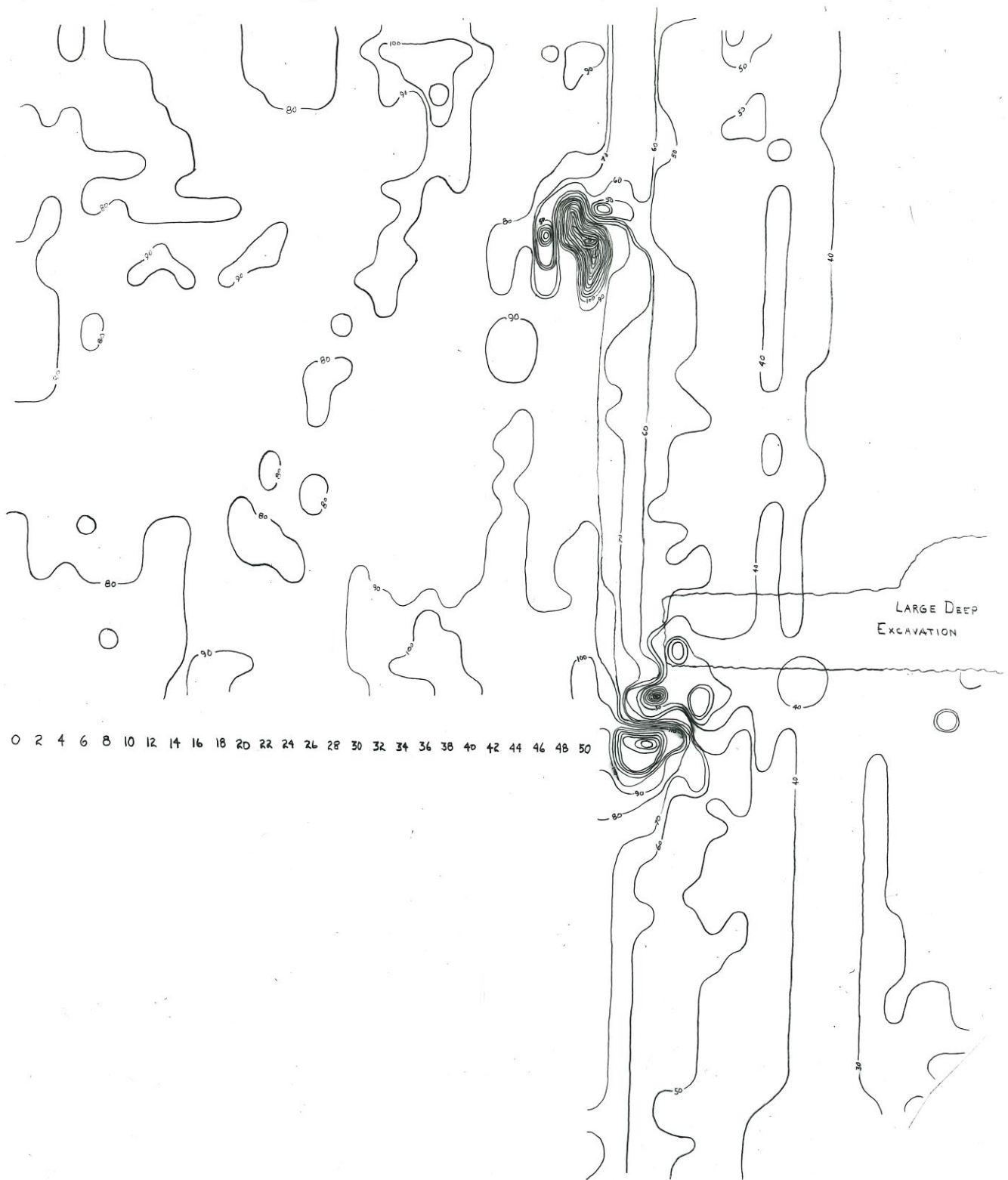
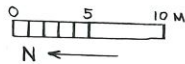


G-17 ← 3/11/89

← G-17 (left)

GRID #17

BASE READING = 43100 ±  
MASCA CS

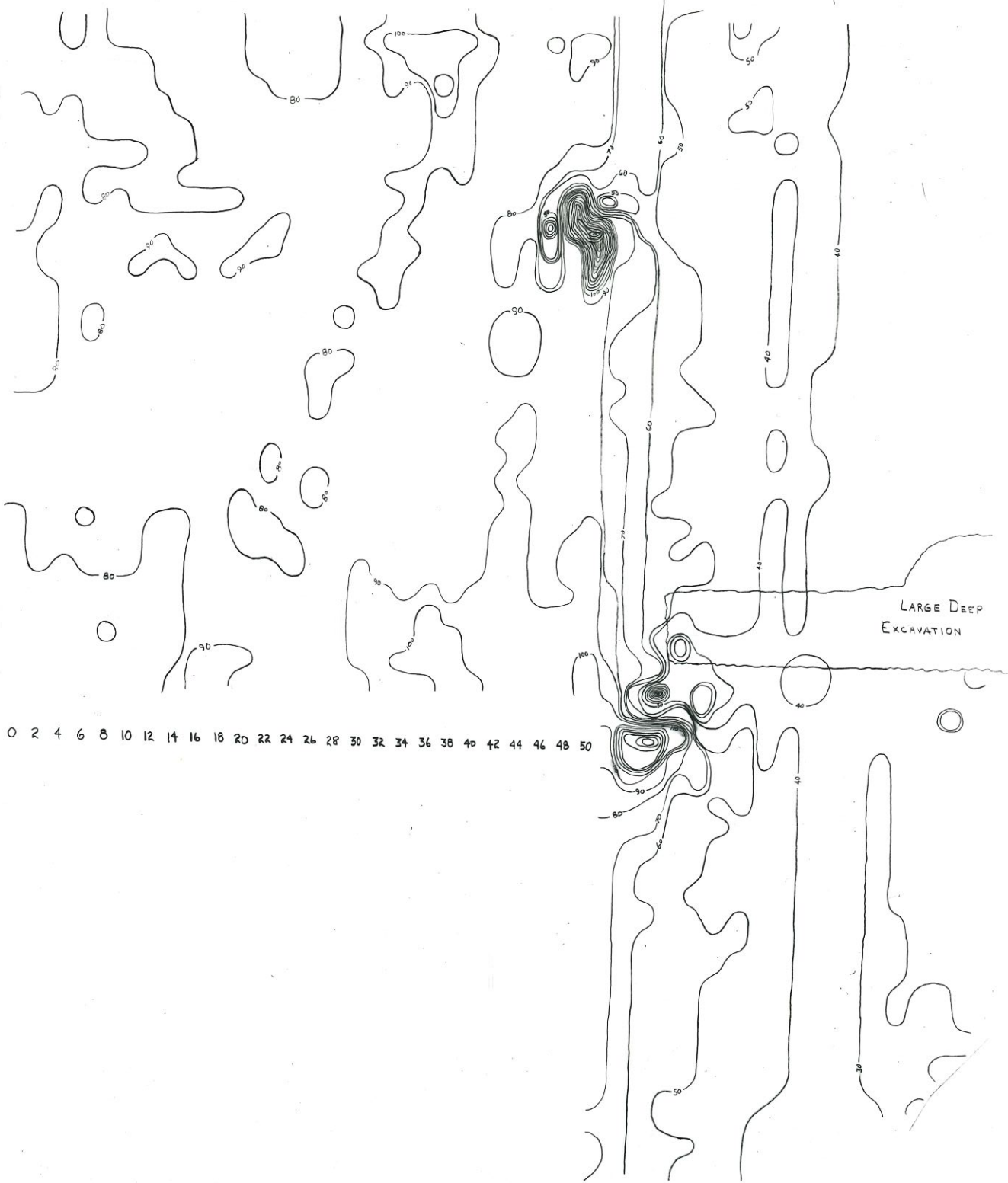
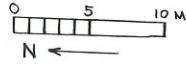


0 2 4 6 8 10 12 14 16 18 20 22 24 26 28 30 32 34 36 38 40 42 44 46 48 50

52 54 56 58 60 62 64 66 68 70 72 74 76 78 80 82 84 86 88

GRID #17

BASE READING = 43100 X  
MASCA CS



0 2 4 6 8 10 12 14 16 18 20 22 24 26 28 30 32 34 36 38 40 42 44 46 48 50

52 54 56 58 60 62 64 66 68 70 72 74 76 78 80 82 84 86 88

Fig. 12