

Imitation Olmec head and  
E.K. Ralph with cesium  
magnetometer sensor in  
University Museum, 1971



Monumento No. 58. Placa de basalto de 1.35 M. de largo por 80 cms. de ancho y 30 de grueso, con un bajorelieve en forma de pez, hallada en la anomalía detectada en el Group D Ridge, cerca de los monumentos 30, 31, 44 y 45.



SAN LORENZO TENOCHTITLAN  
VERACRUZ TEMPORADA 1969  
I N A H - I A U V  
POZO NUMERO 6  
SECCION

Monumento # 55. Columna de basalto de 3.95 M  
de longitud.

SAN LORENZO TENOCHTITLAN  
VERACRUZ TEMPORADA 1969  
I N A H - I A U V

POZO NUMERO 8  
SECCION



Ofrenda de piedras calizas irregulares en una -  
superficie circular, asociadas con huesos humanos, que  
descansaba en la base o asiento del Monumento No. 56



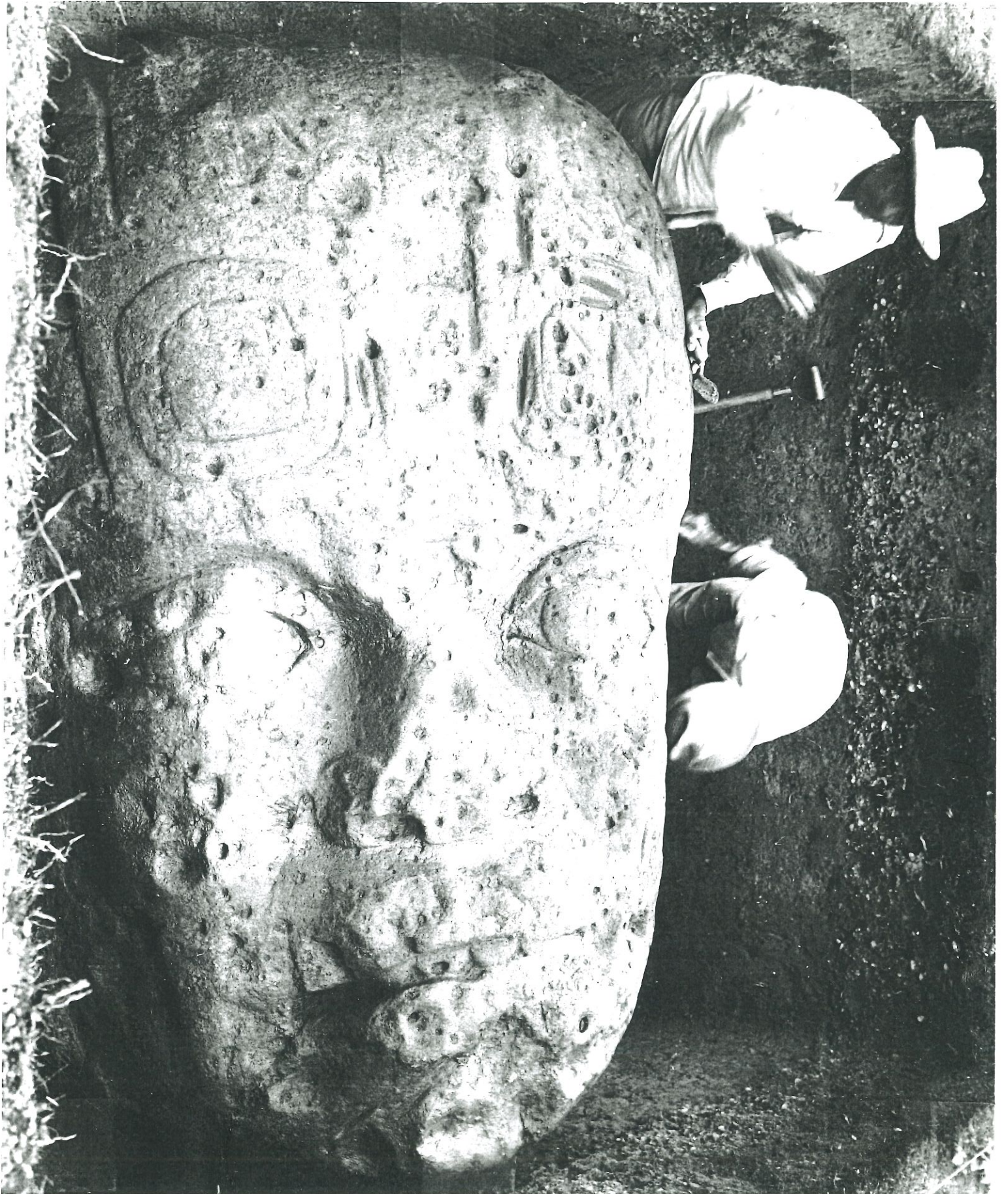
SAN LORENZO SENSCHITTIAN  
PERAKU KEMERADA 1944  
P. N. B. - J. A. U. V.  
FOTO NUMERO 37  
SECCION

Monumento No. 56. Estela de piedra verde de 5.35 M de longitud. Anomalía cerca del Drenaje, al pié de la cañada de la Ceiba. Vista hacia en NW.

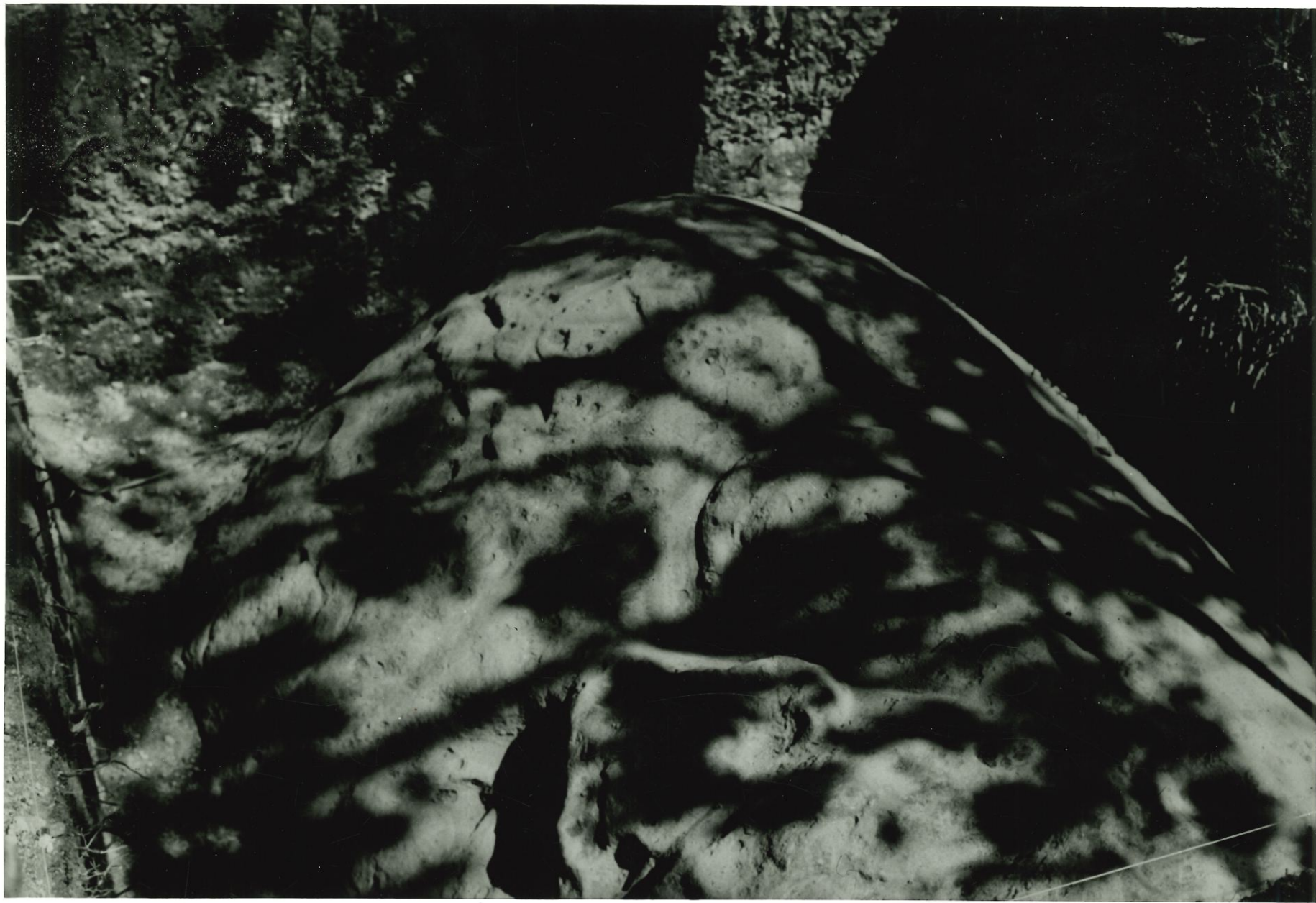


Monumento # 58. Group D Ridge.

Sent to ps 018013







Olmec head found with  
Cesium magnetometer, San Lorenza



Fig. 8



Fig. 8

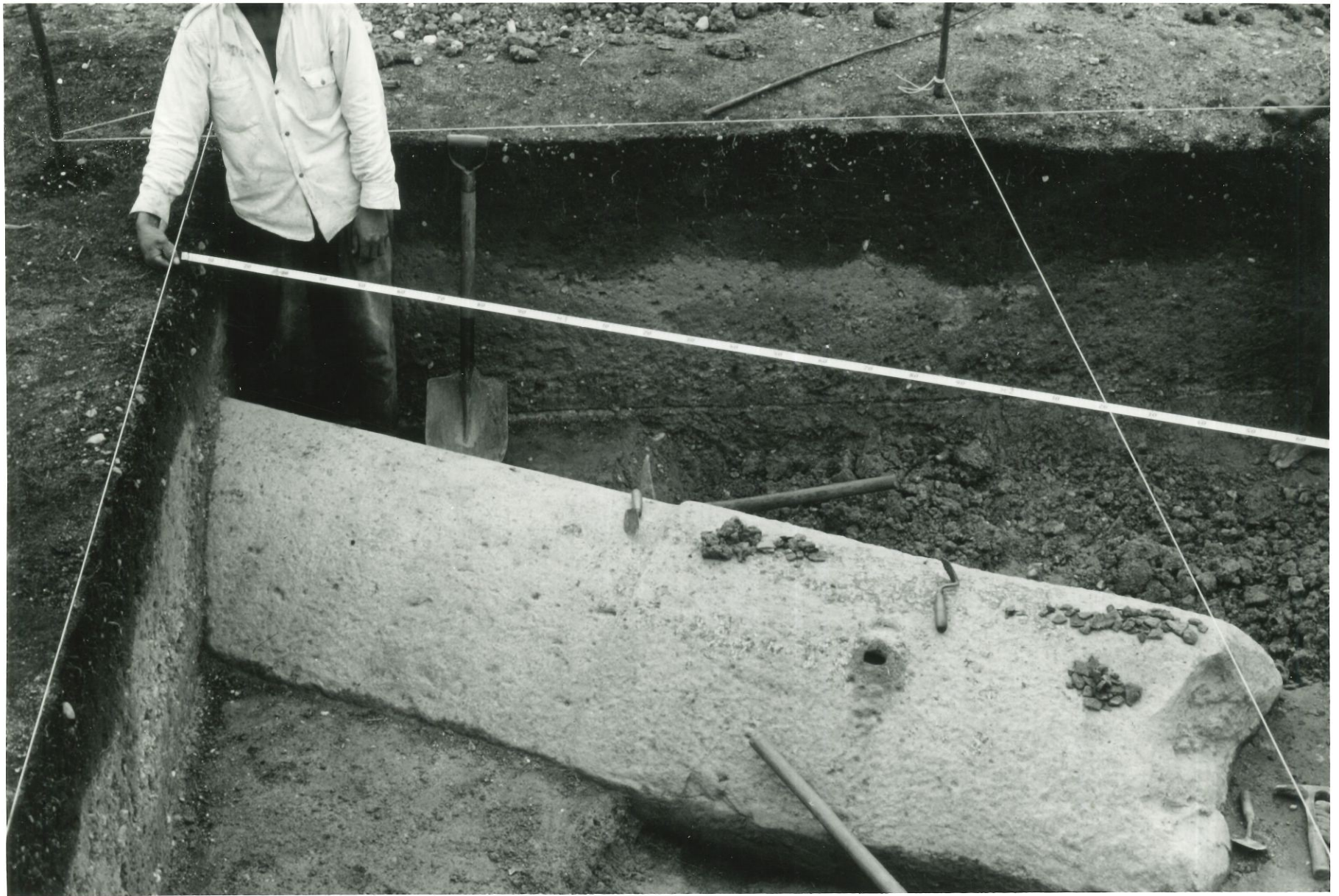


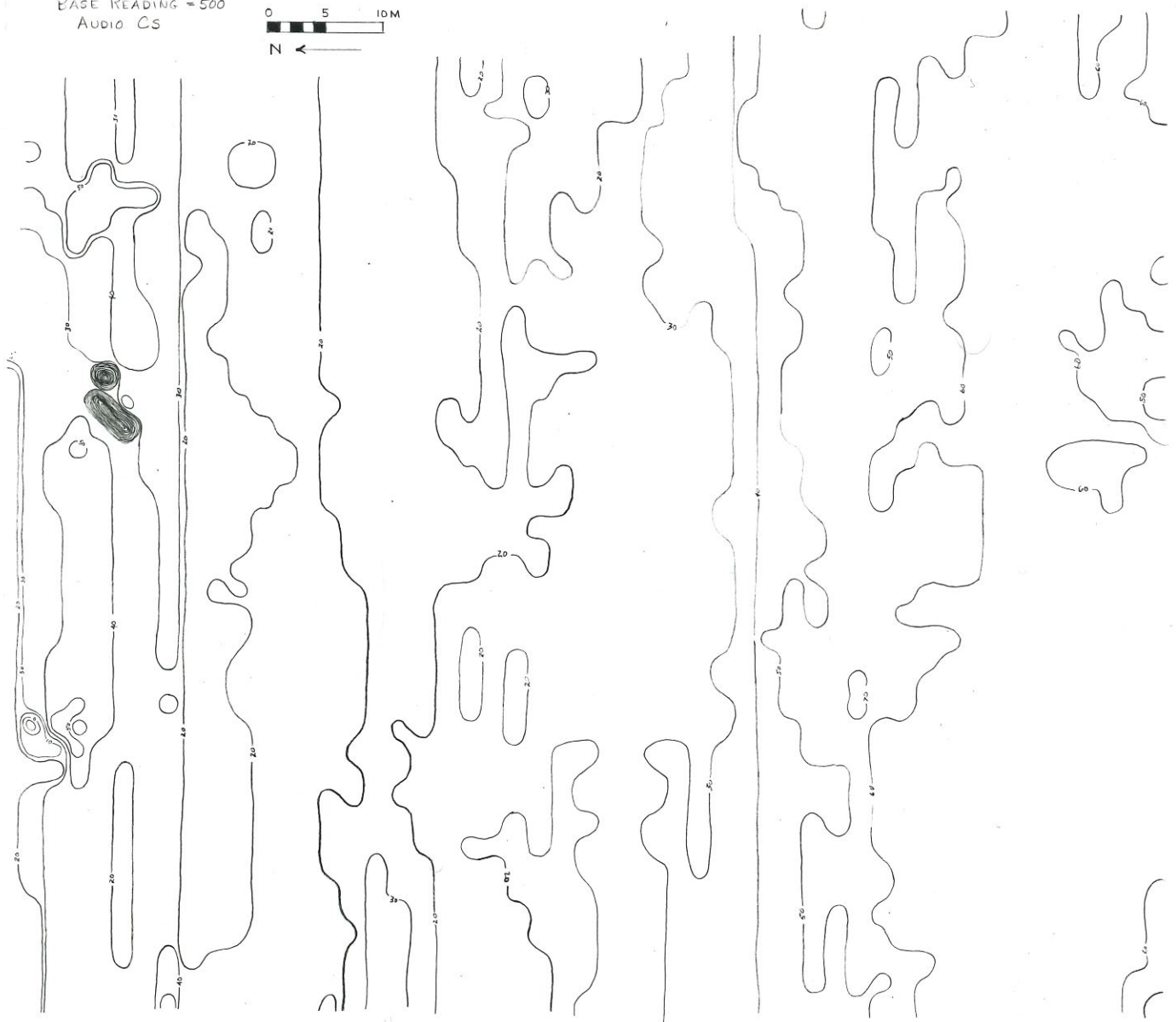
Fig. 13



Fig. 13

BASE READING = 500  
AUDIO CS

GRID # 9

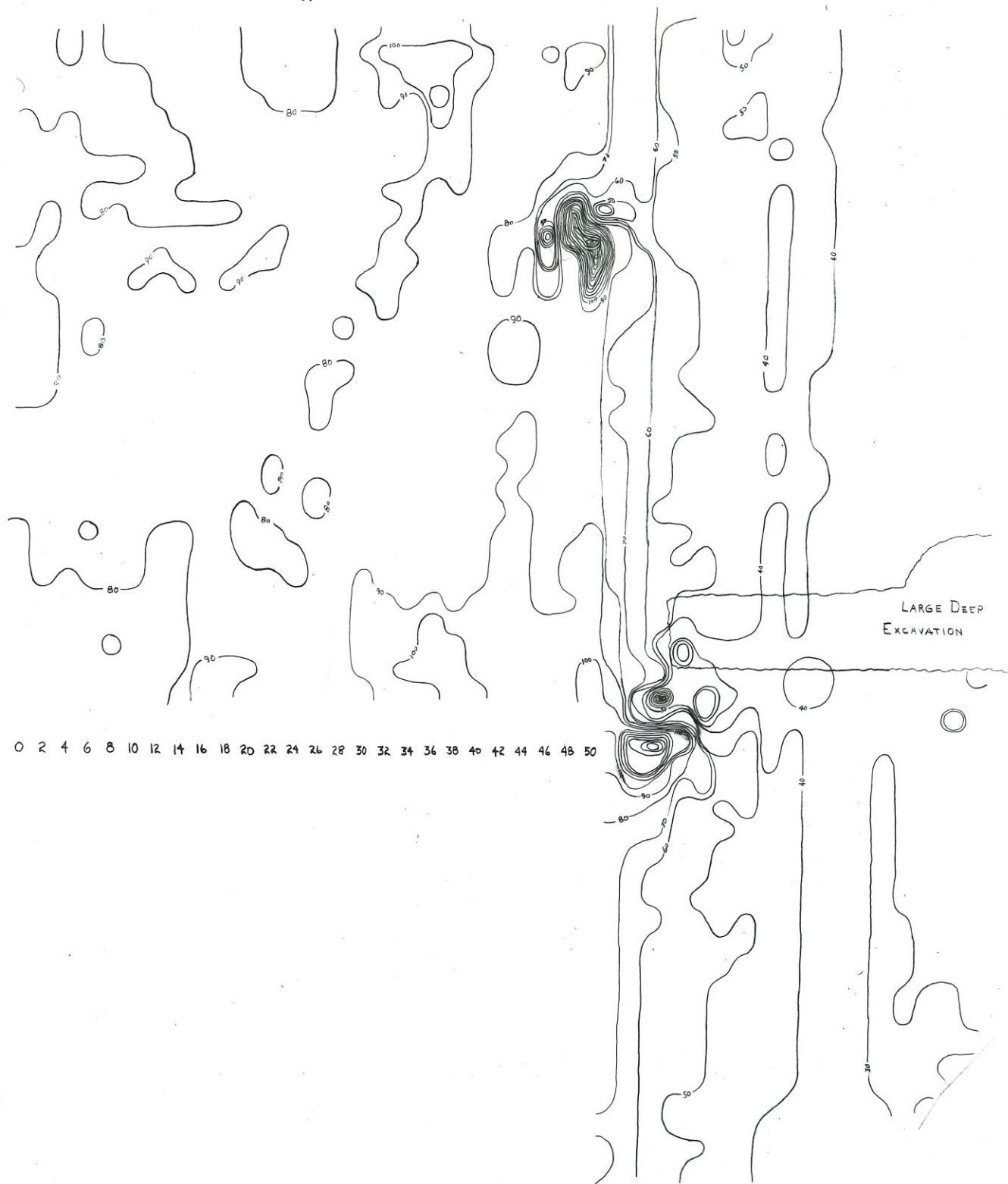
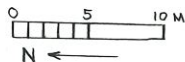


0 2 4 6 8 10 12 14 16 18 20 22 24 26 28 30 32 34 36 38 40 42 44 46 48 50 52 54 56 58 60 62 64 66 68 70 72 74 76 78 80 82 84 86 88 90 92 94 96 98 100

fig. 9

GRID #17

BASE READING = 43100 ft  
MASCA CS



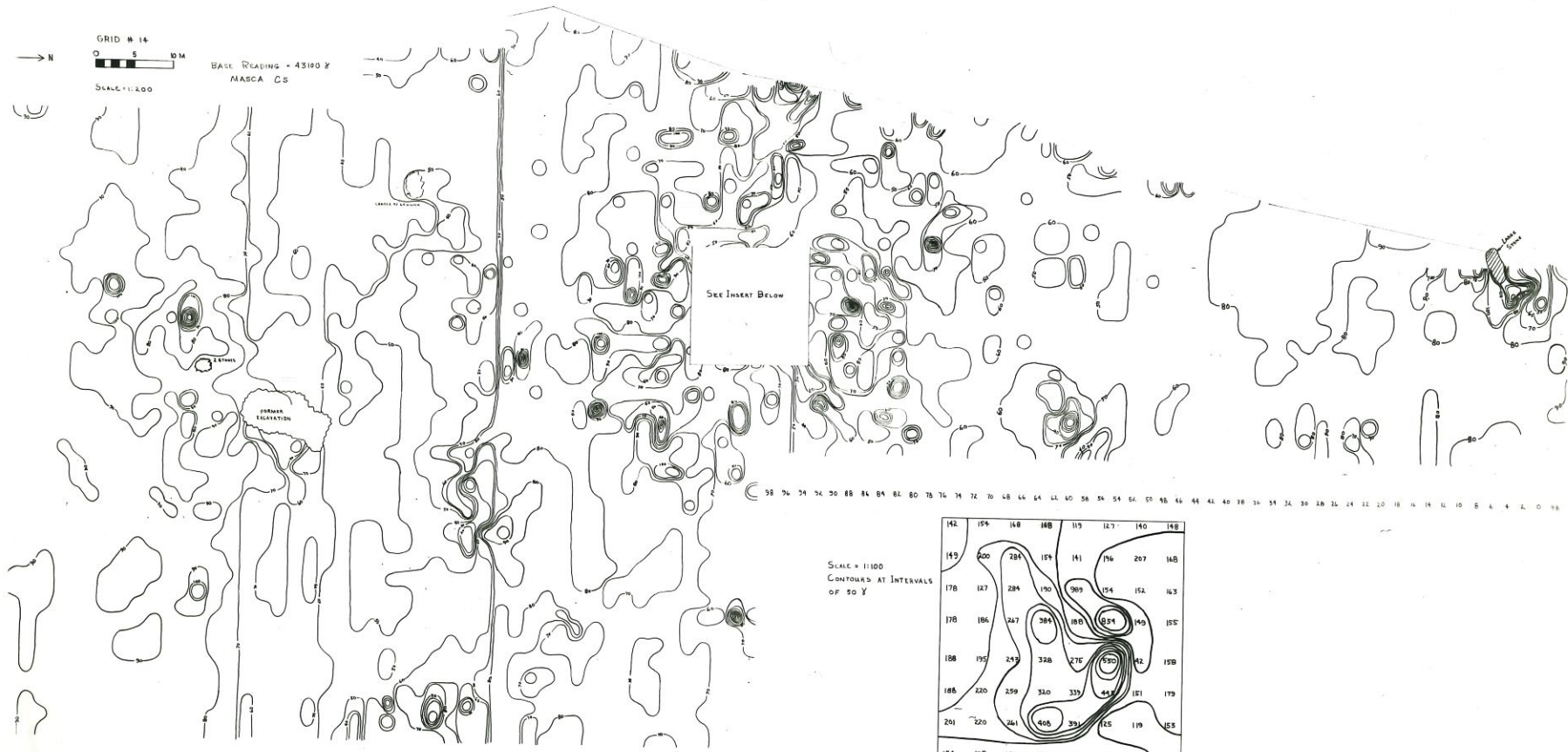
52 54 56 58 60 62 64 66 68 70 72 74 76 78 80 82 84 86 88

Fig. 12



Fig. 13

GRID # 14  
 0 5 10 M  
 SCALE 1:1,200  
 BACK SIGHTING - 43100 Y  
 MASCA CS



38 32 30 00 04 04 02 00 76 74 72 70 68 66 64 62 60 58 56 54 52 50 48 46 44 42 40 38 36 34 32 30 28 26 24 22 20 18 16 14 12 10 8 6 4 2 0

58 56 54 52 50 48 46 44 42 40 38 36 34 32 30 28 26 24 22 20 18 16 14 12 10 8 6 4 2 0 58

SCALE = 1:100  
 CONTOURS AT INTERVALS  
 OF 50 Y

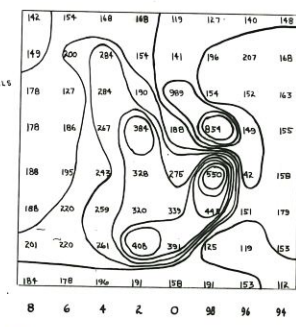
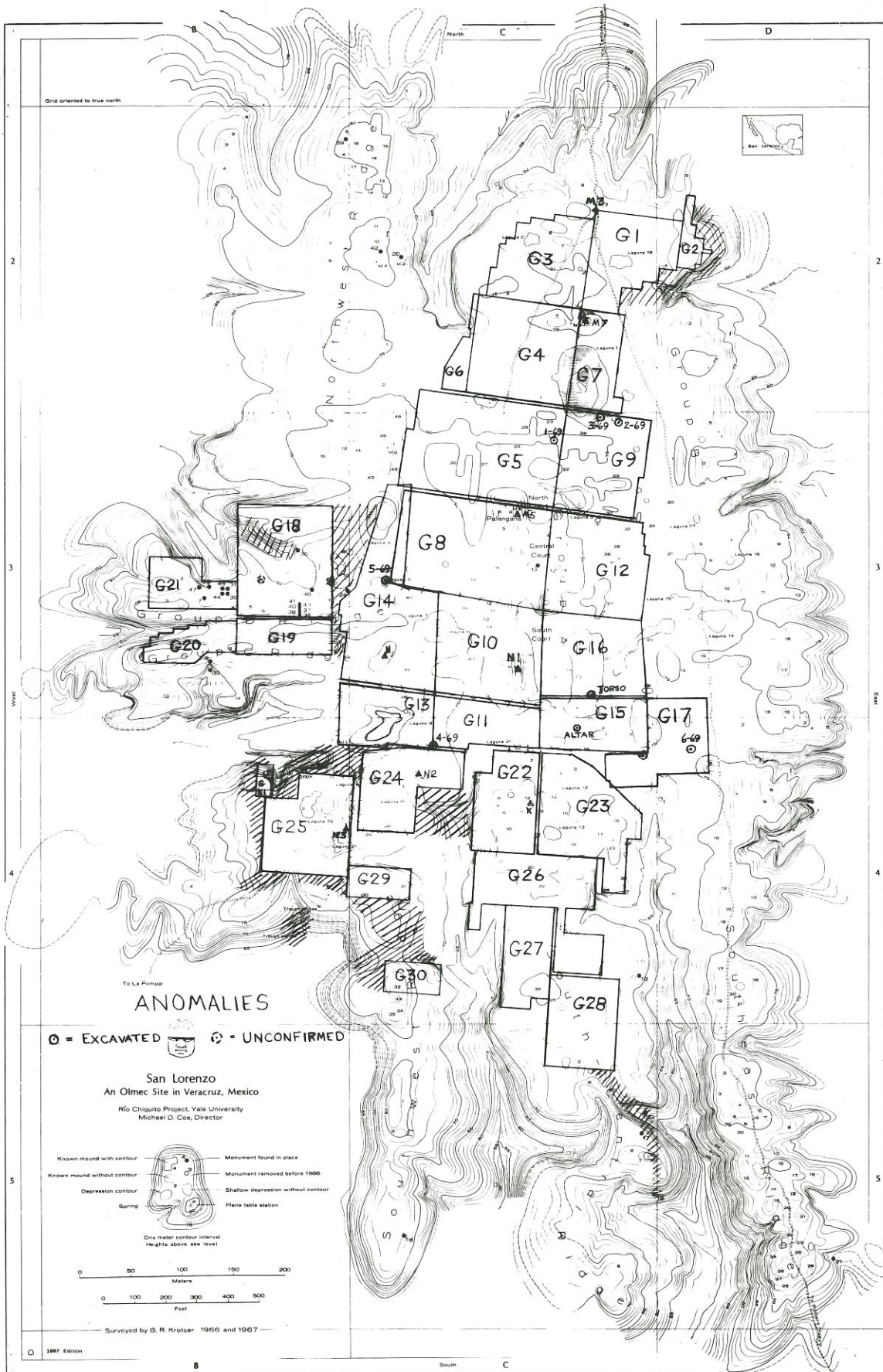


Fig. 11



Grid oriented to true north



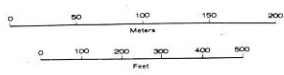
To La Fompa

### ANOMALIES

⊙ = EXCAVATED    ⊛ = UNCONFIRMED

San Lorenzo  
An Olmec Site in Veracruz, Mexico  
Rio Chiquito Project, Yale University  
Michael D. Coe, Director

- Known mound with contour
- Known mound without contour
- Depression contour
- Spring
- Monument found in place
- Monument removed before 1966
- Shallow depression without contour
- Plane table station

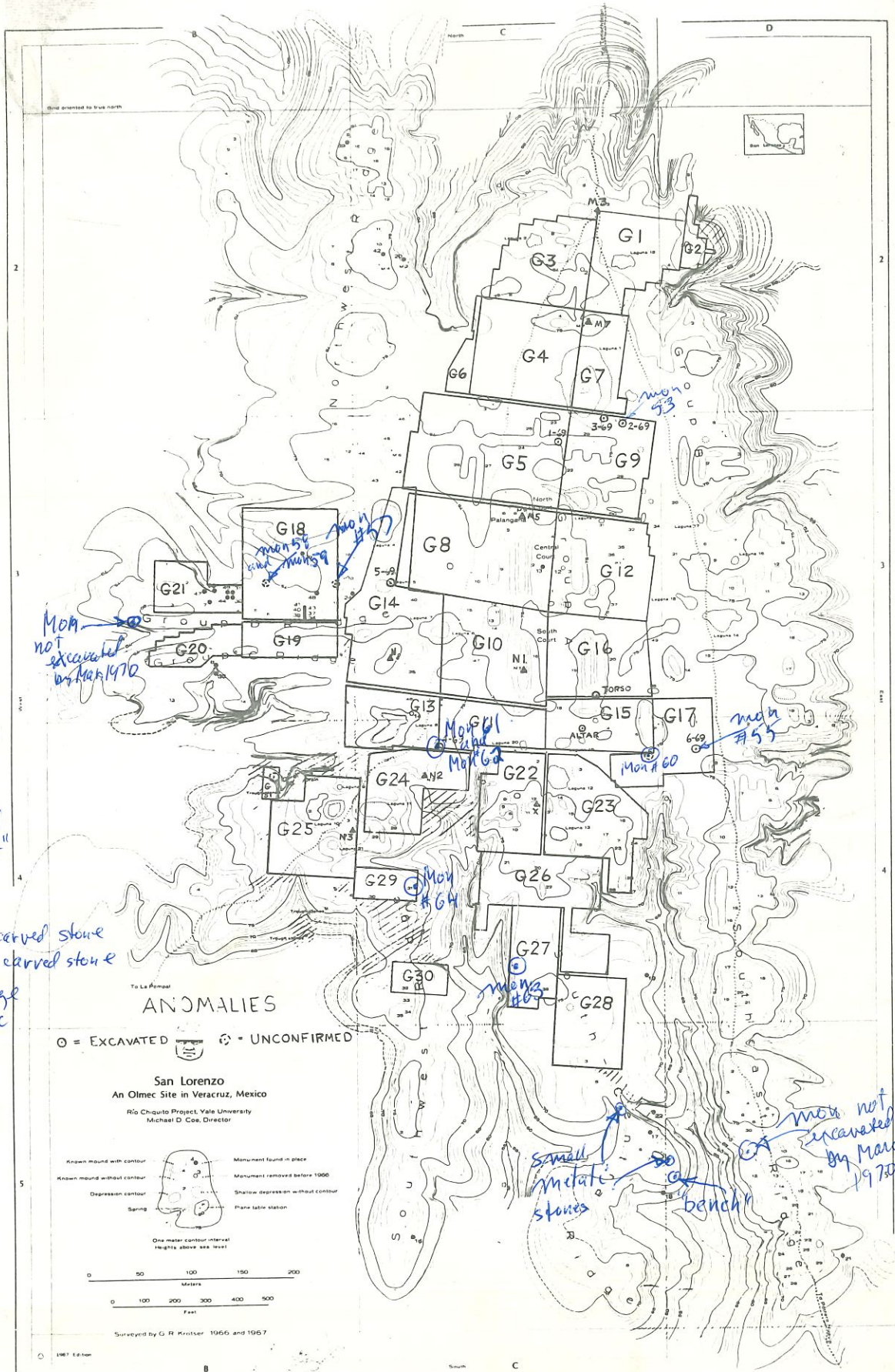


Surveyed by G. R. Krotzer 1966 and 1967

Map and Magnetometer Survey Overlay

San Lorenzo, Mexico 1969

Locations of cesium magnetometer  
grids and anomalies.



Mon 60 - "small altar"

Mon 61 - big head

Mon 62 - large carved stone

Mon 63 - large carved stone

Mon 64 - large disc

MOA  
not excavated  
by March 1970

Mon #57  
Mon #58  
Mon #59

Mon #61  
Mon #62

Mon #64

Mon #65

Mon #53

Mon #55

Mon #60

Small  
metal  
stones

bench

Mon not  
excavated  
by March  
1970

# geoMetrics

914 Industrial Avenue  
Palo Alto, California 94303  
(415) 321-7610



Remote Sensing and  
Interpretation

June 12, 1970

Miss Elizabeth K. Ralph  
The University Museum  
University of Pennsylvania  
Thirty-Third & Spruce Streets  
Philadelphia, Pennsylvania 19104

Dear Beth:

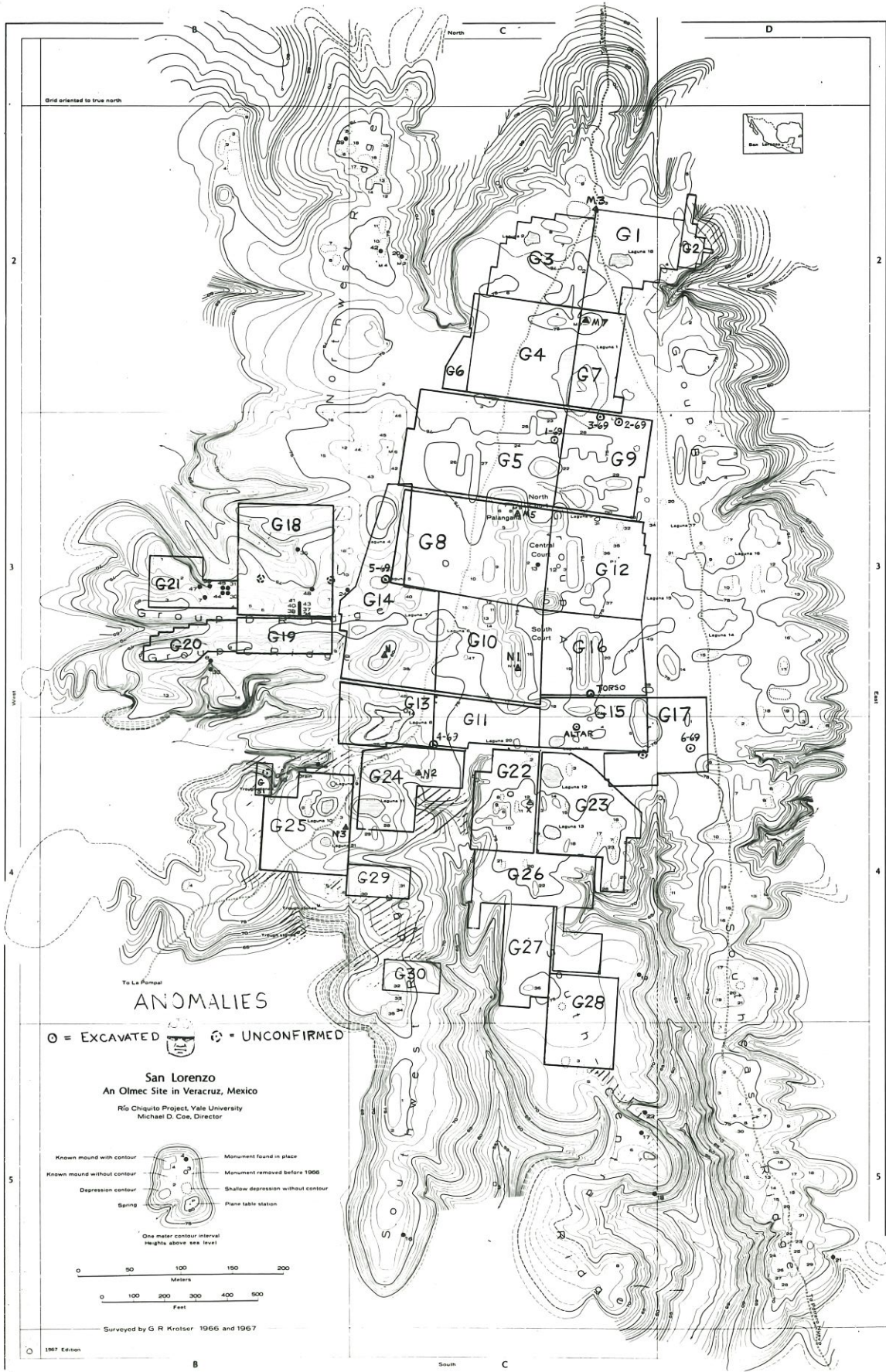
Enclosed is the much-delayed reduced copy of the San Lorenzo map with locations of anomalies noted on Marv Harris' report of March, 1970. If you need the original map, let me know, although there's nothing more on it.

I trust Fro<sup>reiner</sup> received from me a couple of months ago, both black and white and color slides of the monuments uncovered this year.

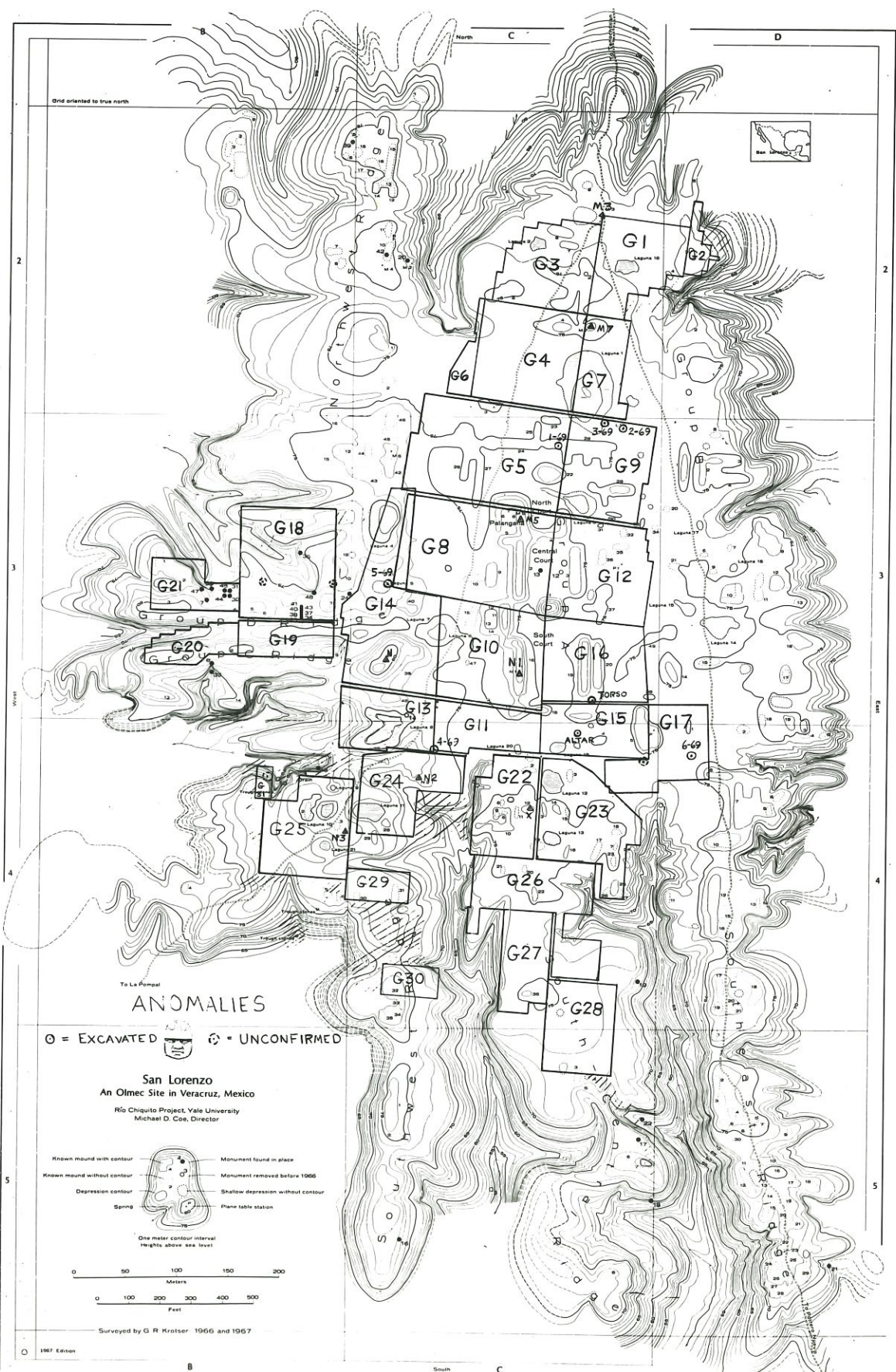
Regards,

Sheldon Breiner  
President

SB:sk  
Enclosure



Figs. 3 & 4



79. 3 3/4

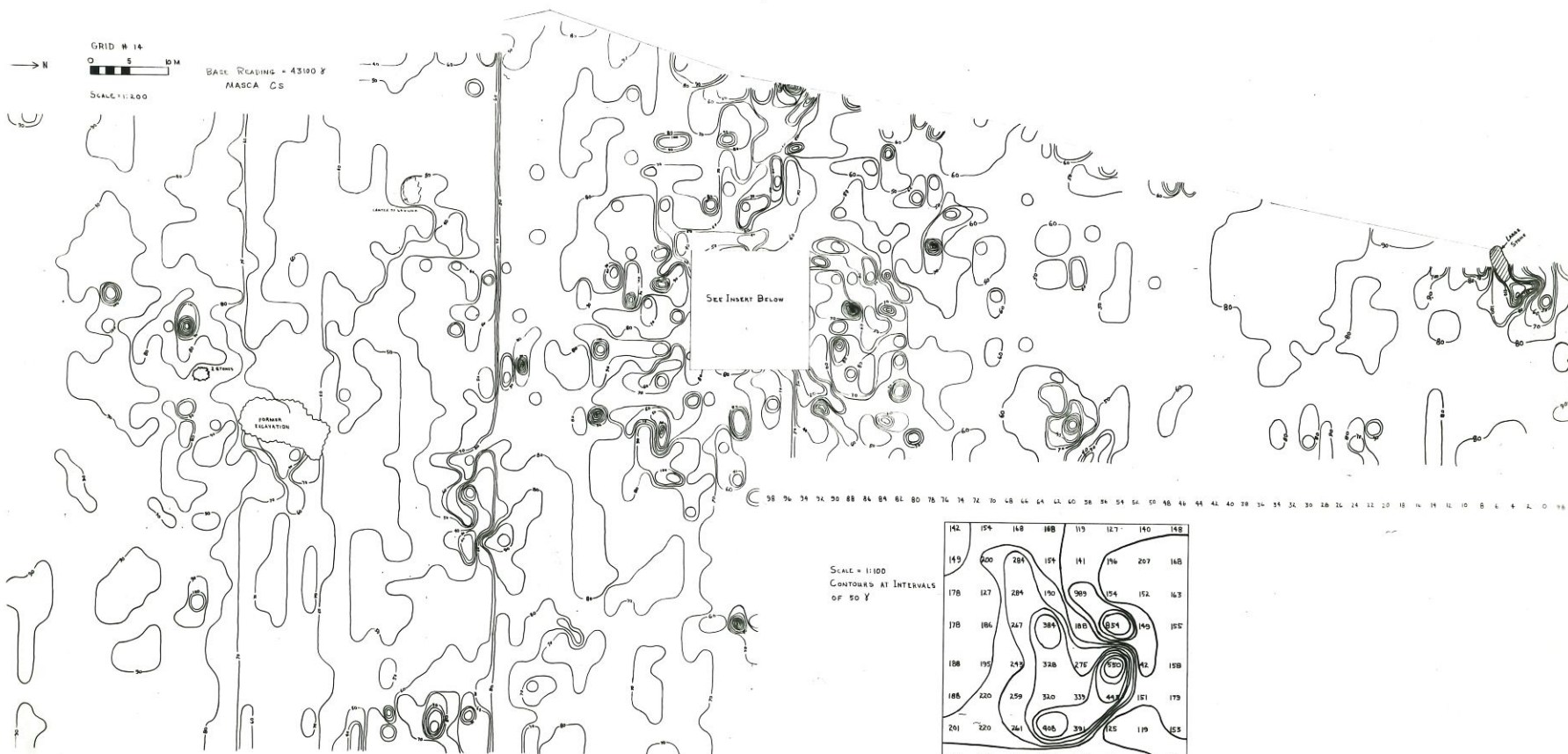


GRID # 14

0 5 10 M

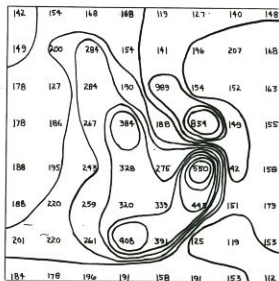
SCALE 1:1000

BASE READING = 43100 Y  
MASCA CS



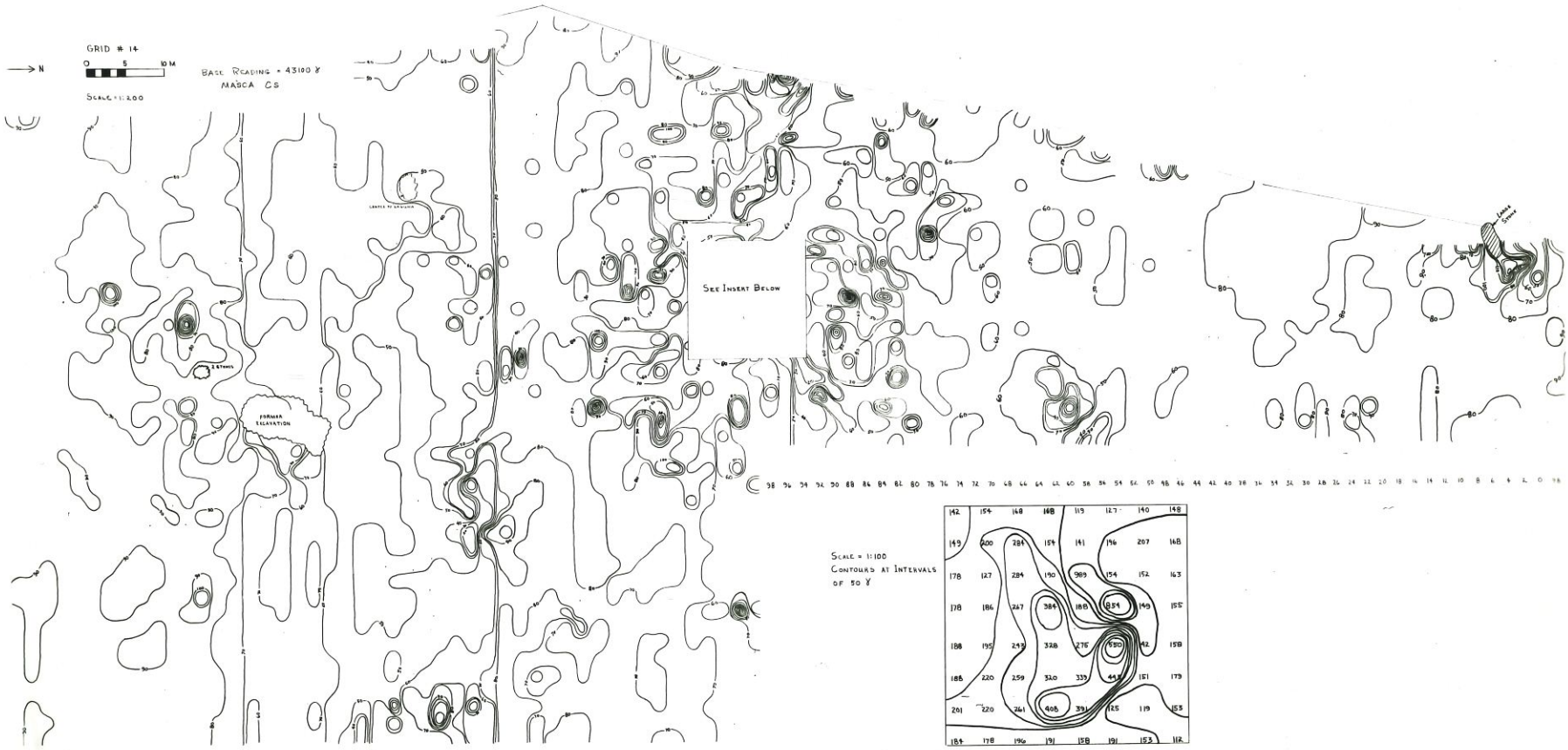
38 36 34 32 30 28 26 24 22 20 18 16 14 12 10 8 6 4 2 0

SCALE = 1:1000  
CONTOURS AT INTERVALS  
OF 50 Y



8 6 4 2 0 98 96 94

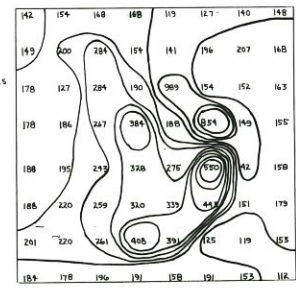
GRID # 14  
 0 5 10 M  
 BASE READING = 43100 X  
 MABCA CS  
 SCALE 1:1200



34 32 30 28 26 24 22 20 18 16 14 12 10 8 6 4 2 0

38 36 34 32 30 28 26 24 22 20 18 16 14 12 10 8 6 4 2 0 18

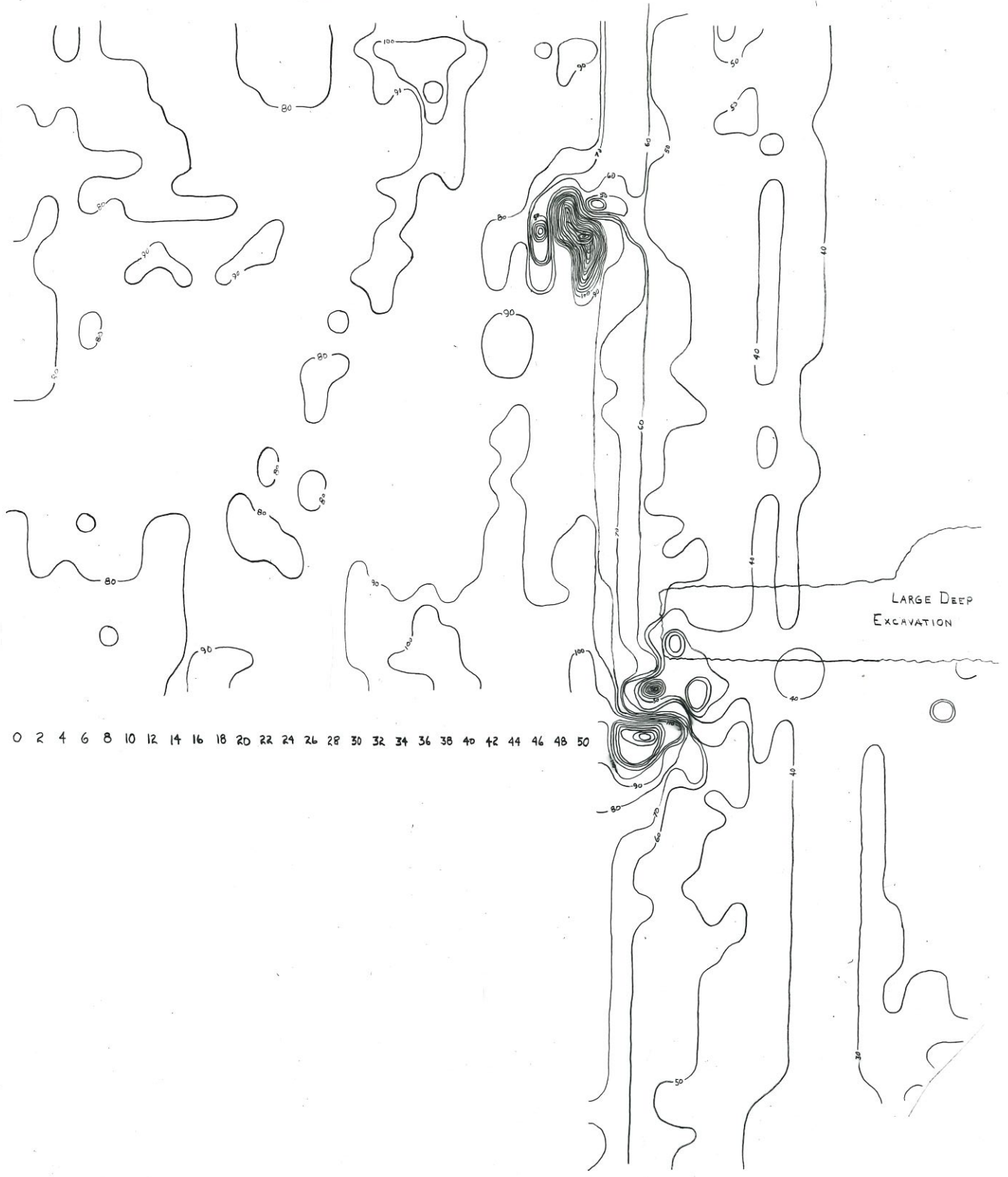
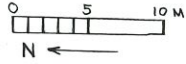
SCALE = 1:100  
 CONTOURS AT INTERVALS  
 OF 50 Y



8 6 4 2 0 98 96 94

GRID #17

BASE READING = 43100 ±  
MASCA CS

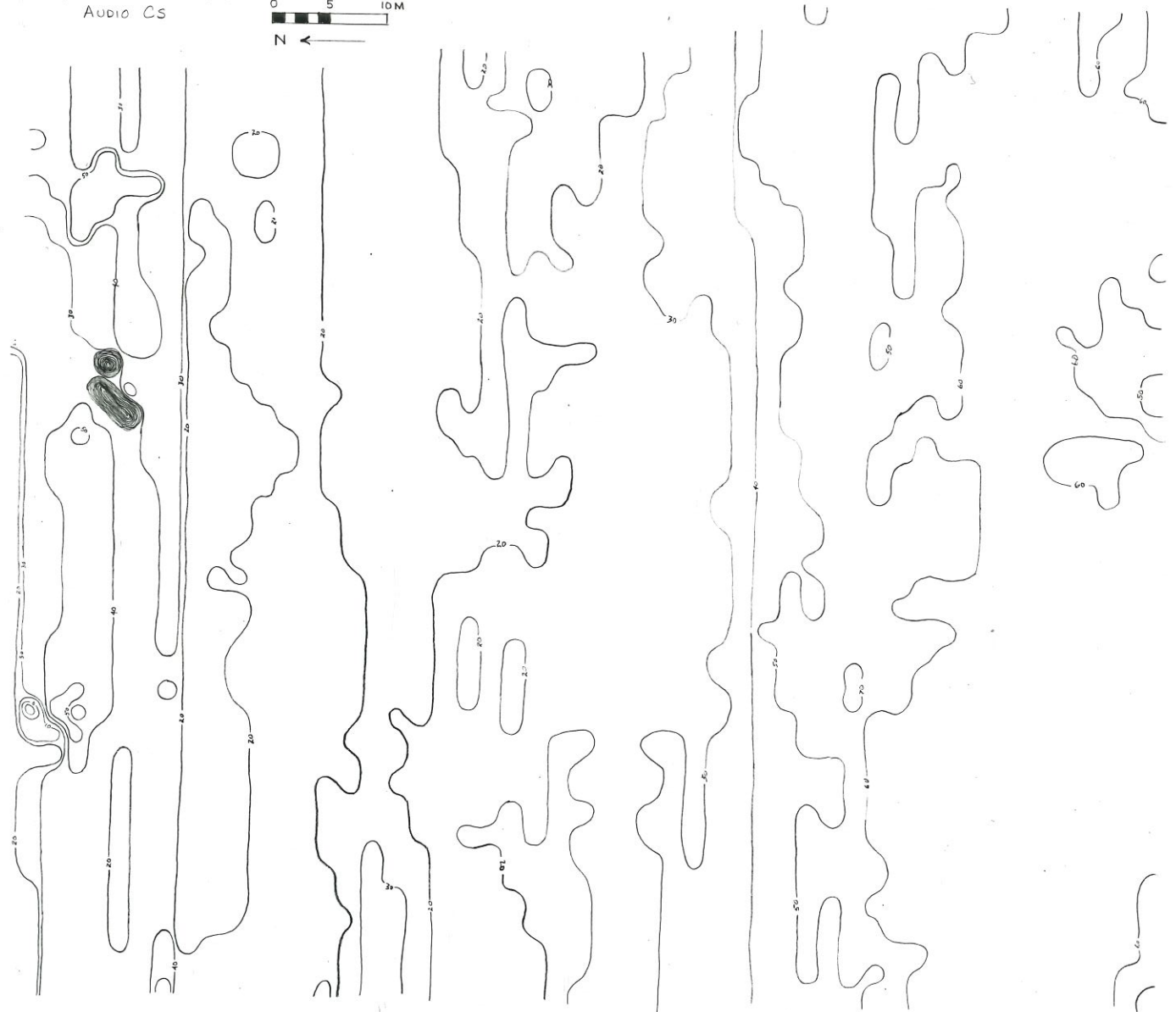
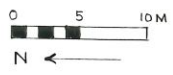


0 2 4 6 8 10 12 14 16 18 20 22 24 26 28 30 32 34 36 38 40 42 44 46 48 50

52 54 56 58 60 62 64 66 68 70 72 74 76 78 80 82 84 86 88

BASE READING = 500  
AUDIO CS

GRID # 9



0 2 4 6 8 10 12 14 16 18 20 22 24 26 28 30 32 34 36 38 40 42 44 46 48 50 52 54 56 58 60 62 64 66 68 70 72 74 76 78 80 82 84 86 88 90 92 94 96 98 100





62	62	67	64	65	70	66	67	70	70	75	72	75	72	76	75	74	75	62	72	76	73	73	74	74	74	76	75	72	77			
62	62	64	62	67	65	66	67	68	71	77	74	77	74	74	74	74	75	63	73	70	73	74	73	74	70	75	72	75	79	77		
61	60	65	62	64	66	66	66	69	72	70	76	79	74	74	74	72	75	63	75	70	71	70	73	63	73	74	73	72	73	72	70	
63	62	64	62	65	69	66	67	69	72	76	77	76	72	73	74	69	77	69	72	66	70	71	70	68	73	73	72	71	72	72	70	
64	63	64	62	65	69	66	67	67	70	75	75	74	73	73	72	68	74	64	68	66	69	70	74	67	67	63	72	73	70	70	69	
64	63	65	62	66	68	66	66	67	70	73	74	75	72	73	73	68	69	65	67	66	67	70	68	63	66	67	71	71	71	74	69	
64	64	67	63	66	70	66	67	67	70	76	76	75	71	72	71	70	70	63	65	73	67	62	69	68	65	66	69	69	71	79	71	
65	65	68	63	66	68	67	67	68	69	74	77	75	71	74	71	72	69	64	65	72	71	64	69	68	68	68	68	69	71	74	72	
65	65	68	64	65	67	66	66	67	70	75	75	76	77	75	74	75	68	68	67	73	71	64	76	69	69	71	70	71	71	73	74	
65	65	69	65	65	64	66	66	67	69	76	76	77	73	77	75	77	71	69	70	74	72	66	72	70	71	71	71	76	73	75	74	
65	65	67	64	66	68	67	67	67	69	73	76	76	75	77	77	68	74	71	71	76	74	64	64	75	70	72	73	75	78	74	74	72
65	65	68	65	67	69	66	66	66	69	72	76	74	74	74	78	76	76	72	73	81	73	67	76	72	71	72	73	73	75	78	71	
65	66	69	65	69	72	67	69	68	70	73	75	74	74	77	78	77	77	77	74	63	74	63	70	71	72	73	75	78	74	74	69	
67	66	71	65	67	70	66	67	67	70	73	74	75	74	77	78	77	84	78	81	78	77	63	76	71	73	75	75	76	73	74	68	
67	67	71	65	67	70	66	67	67	70	74	74	77	76	78	78	79	78	78	79	79	80	81	82	76	74	77	74	75	74	72	70	
68	67	69	65	68	69	67	68	68	69	74	76	75	77	79	79	77	77	75	81	76	80	82	85	78	74	81	77	79	74	71	70	
67	67	68	66	68	71	67	67	68	69	72	73	74	73	77	77	76	78	74	80	77	81	80	84	77	79	80	80	78	77	72	72	
68	67	70	66	68	71	67	68	67	69	72	74	72	73	75	75	73	79	75	79	83	78	82	80	76	78	77	80	74	76	73	71	
68	67	69	67	68	71	69	69	68	70	72	73	70	71	73	76	71	76	75	77	77	79	83	75	77	76	75	78	74	73	70		
68	67	71	66	70	71	69	63	70	70	73	71	76	73	71	71	73	74	76	78	74	82	82	77	77	78	76	74	75	70	69		
68	67	68	66	68	72	70	70	70	72	73	72	76	75	75	75	75	71	75	80	73	81	85	78	78	80	75	75	72	71	71		
68	68	71	67	69	72	69	71	71	73	74	76	75	74	75	75	75	74	79	74	78	76	78	85	71	78	77	75	75	74	72	67	
68	68	72	67	70	73	70	70	69	70	74	76	75	73	74	74	74	74	75	73	80	77	75	85	72	74	78	76	75	74	76		
69	69	70	67	69	73	70	72	73	69	75	75	76	73	73	73	73	73	74	79	71	76	76	87	71	74	79	77	74	73	72		
70	69	70	68	69	70	71	70	71	72	73	74	73	74	73	74	74	75	74	79	73	76	77	78	73	76	80	75	76	73	72		
73	71	72	69	72	73	70	70	70	72	72	75	72	76	73	74	73	74	72	77	72	72	73	76	89	77	75	76	74	75	74		
74	75	72	72	70	73	70	70	70	72	72	76	73	72	72	73	71	75	71	76	74	72	79	77	71	77	75	75	73	77	74		
71	69	70	70	68	71	64	68	68	73	72	74	73	72	73	71	73	72	71	75	76	73	76	75	73	72	73	72	74	71	71		
66	67	64	65	66	70	69	67	68	74	72	74	72	71	71	73	74	72	72	73	74	76	77	79	76	78	77	76	76	74	73		
66	65	68	66	68	71	70	70	70	72	73	75	72	70	72	74	73	73	73	74	75	75	77	75	72	76	73	71	75	70	72		
65	68	69	69	67	73	68	70	68	71	72	74	72	70	72	73	71	73	70	75	72	75	74	79	72	73	74	73	75	71	74		
65	67	66	67	66	68	67	66	67	71	72	75	73	71	71	74	70	73	69	68	72	74	76	77	73	74	75	75	76	73	72		
68	65	66	67	68	69	68	69	68	71	73	75	74	74	71	72	71	71	68	73	74	74	79	72	74	75	77	73	73	72			
67	67	66	68	69	72	69	69	68	72	73	76	76	72	73	72	73	72	68	72	73	73	74	75	73	74	73	74	77	68	73		
68	68	68	69	69	73	69	68	69	72	73	75	73	72	72	72	73	72	70	72	74	73	74	75	71	74	72	74	72	71	69		
68	69	69	68	69	72	70	70	70	72	72	74	72	73	73	73	74	73	71	74	76	74	76	77	71	73	73	71	68	68			
68	68	69	69	70	74	72	71	71	73	73	74	74	74	73	76	74	74	71	75	77	76	77	77	71	72	73	71	68	65			
67	68	69	71	70	75	71	72	74	75	74	76	75	74	74	75	74	74	71	77	75	77	75	77	70								
68	68	69	70	69	72	72	73	74	74	77	76	75	75	75	75	74	72	72	74	77	80	75	77	74	77	75	77					
69	70	69	69	71	75	72	73	72	73	73	76	75	75	75	78	76	75	73	76	76	74	76	77	73	76	76	74	76	77			
70	71	70	74	73	75	73	72	72	74	73	75	75	75	78	76	76	74	74	77	77	76	75	76	77	77	76	75	76	77			
71	72	73	70	75	76	76	73	73	75	74	76	75	76	76	80	76	76	72	81	77	77	81	77	77	77	76	75	76	77	78		
71	69	71	74	73	75	75	77	75	78	75	77	76	76	76	81	77	76	68	73	73	74	75	73	74	73	74	77	68	73			
69	69	69	73	71	69	73	75	73	77	75	79	79	79	78	79	78	76	74	75	80	77	81	73	75	80	77	76	71	78	83	79	
69	69	69	70	68	77	70	72	70	76	75	79	77	75	77	77	77	76	69	68	72	74	75	76	71	78	83	79	71	78	83	79	
67	66	67	68	68	71	73	71	69	74	73	78	75	76	77	77	69	78	67	67	72	74	75	76	70	70	77	79	71	74	78	79	
67	68	67	70	69	72	72	70	69	74	72	77	75	75	76	76	73	73	67	67	72	74	75	76	74	80	77	80	71	74	78	80	
66	68	69	71	74	73	73	70	73	69	76	76	75	71	71	71	71	71	66	68	72	74	75	76	74	76	76	76	76	76	76	76	
0	2	4	6	8	10	12	14	16	18	20	22	24	26	28	30	32	34	36	38	40	42	44	46	48	50	52	54	56	58	60		

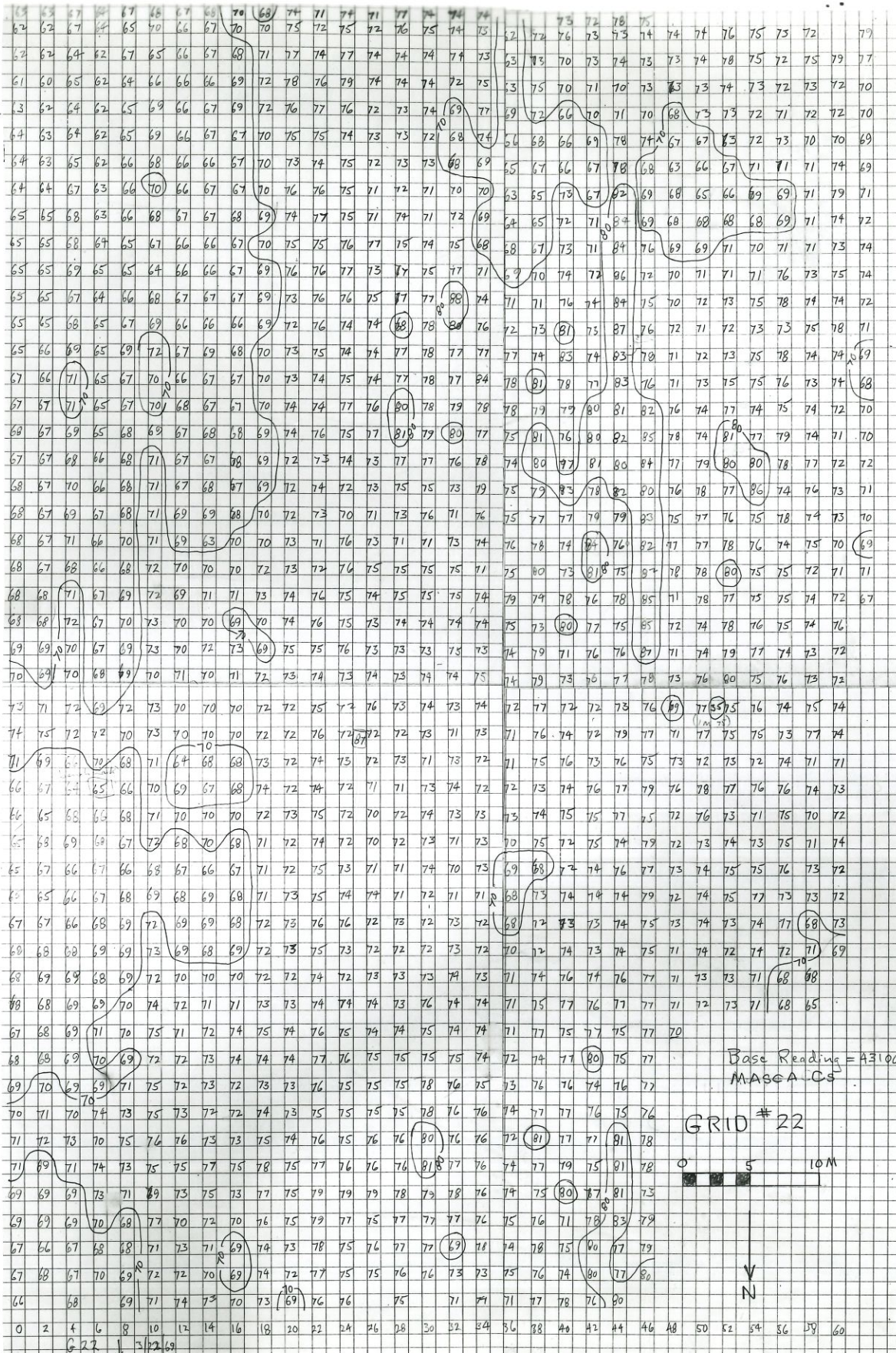
Base Reading = 43100 X  
MABCA-Cs

GRID # 22



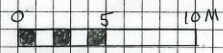
N

G 22 ↓ 3/22 69



Base Reading = 43100.5  
 MASA CS

GRID # 22



N  
 V

G 22 ↓ 3/22/69

67	64	65	202	201	203	200	209	208	79	77	70	71	70	70	71	73	80	81
67	64	66	202	201	202	200	205	206	79	76	69	70	69	69	74	74	80	82
67	64	66	202	203	201	200	205	204	77	75	68	70	69	70	76	74	80	83
68	64	66	203	203	202	200	205	204	75	73	69	71	69	70	73	74	80	83
68	65	66	201	201	202	200	204	203	76	73	70	70	70	69	72	74	81	83
67	65	66	202	202	200	97	204	202	75	74	69	69	68	68	73	74	80	82
68	65	65	201	201	98	96	203	201	74	73	69	67	67	70	73	74	80	82
68	65	65	204	201	99	96	202	201	74	74	69	66	67	70	73	74	81	82
67	65	66	202	201	98	95	201	202	73	73	69	66	65	69	73	76	81	82
68	67	67	203	201	98	94	200	201	74	73	69	66	66	68	73	76	81	82
65	66	68	203	203	98	94	99	200	73	73	68	66	66	69	73	76	81	82
72	67	67	203	203	97	94	99	201	74	72	68	66	65	69	73	75	80	82
70	66	67	200	203	97	94	200	202	73	72	68	67	66	68	73	75	80	82
78	66	66	200	201	98	95	200	202	73	70	67	69	65	69	73	75	79	81
77	62	68	205	92	97	93	200	204	76	72	69	69	65	68	71	74	79	81
79	64	69	204	94	92	201	205	79	75	70	69	67	68	71	73	75	80	82
77	63	69	201	84	79	93	203	209	81	75	71	70	69	68	71	74	76	78
74	67	67	206	95	94	204	205	208	81	76	71	73	71	69	68	70	78	79
70	68	64	200	200	95	97	204	212	81	77	73	72	71	68	66	69	78	81
68	65	63	76	201	96	94	203	206	80	79	74	71	70	69	67	69	76	80
66	64	63	96	204	95	92	204	202	80	78	75	72	70	70	68	70	75	79
69	64	62	97	203	96	96	202	208	82	76	74	71	70	71	68	69	76	79
69	63	62	97	203	99	97	202	201	79	76	74	72	71	70	68	69	76	79
68	63	62	96	202	98	96	203	200	78	75	73	71	70	69	69	70	76	78
67	63	62	96	201	97	95	204	99	77	73	73	71	70	69	69	71	77	79
67	63	62	96	99	96	96	204	97	75	74	72	72	69	69	70	70	77	78
65	63	62	97	200	95	96	202	95	77	74	72	72	70	68	69	70	77	78
64	64	63	98	200	94	97	202	94	80	77	75	71	70	68	68	68	76	79
64	63	62	96	202	95	97	204	95	80	78	75	70	70	67	66	75	78	
67	62	67	91	202	94	98	205	94	80	77	76	70	69	68	67	60	76	78
69	72	63	98	201	93	96	206	93	81	75	75	64	59	60	60	60	75	79
74	66	65	96	200	93	96	207	92	81	78	76	64	60	64	58	59	77	77
51	68	64	95	99	94	97	207	90	81	78	76	67	66	66	70	67	77	78
68	67	61	96	201	93	93	207	88	81	78	76	68	67	65	69	68	78	77
67	65	62	97	99	96	96	206	86	80	78	77	68	67	68	68	68	79	78
68	64	63	98	97	96	95	205	87	80	78	77	67	68	68	67	68	79	79
33	54	65	200	96	91	94	205	85	80	77	75	68	69	68	66	66	77	81
57	70	69	98	94	89	94	205	83	80	76	75	69	69	68	65	65	76	79
83	71	68	99	92	88	93	206	83	80	77	75	69	69	65	64	64	76	77
71	66	65	97	91	87	94	205	80	81	76	75	70	70	67	65	63	76	77
68	63	60	99	90	89	96	204	80	81	76	76	71	71	65	65	63	75	77
63	63	56	92	91	90	96	205	77	81	76	75	71	71	66	65	61	75	77
62	63	59	95	92	90	96	205	80	81	76	75	71	71	67	64	62	76	77
62	64	59	97	92	92	99	210	82	81	76	75	70	70	67	64	61	76	77
64	65	60	98	93	91	98	209	83	81	75	75	70	67	67	64	62	74	76
63	63	60	99	95	93	200	210	85	83	76	76	69	68	67	67	62	74	77
60	65	60	98	94	95	203	211	85	82	74	72	69	69	67	67	63	73	76
61	64	64	97	98	203	94	94	94	76	74	70	70	66	66	63	71	76	76
38	34	35	20	28	26	24	22	20	18	16	14	12	10	8	6	4	2	2
3,19	69	G#	19															

GRID #19



MASCOT  
 43000  
 1000  
 1000  
 1000

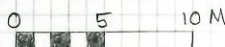
67	64	65	202	201	203	200	209	208	79	77	70	71	70	70	71	73	80	82
67	64	66	202	201	202	200	208	206	79	76	69	70	69	69	74	74	80	82
67	64	66	202	203	201	200	208	204	77	75	68	70	69	70	76	74	80	83
68	64	66	203	203	202	200	205	204	75	73	69	71	69	70	73	74	80	83
68	65	66	201	201	202	200	207	203	76	73	70	70	70	69	72	74	81	83
67	65	66	202	202	200	97	204	203	75	74	69	69	68	68	73	74	80	82
68	65	65	201	201	98	96	203	201	74	73	69	67	67	70	73	74	80	82
68	65	65	202	201	99	96	202	201	74	74	69	66	67	70	73	74	81	82
67	65	66	202	201	98	95	201	202	73	73	69	66	65	69	73	76	81	82
68	67	67	203	201	98	94	200	201	74	73	69	66	66	68	73	76	81	82
65	66	68	203	203	98	94	99	200	73	73	68	66	66	69	73	76	81	82
72	67	67	203	203	97	94	99	201	74	72	68	66	65	69	73	75	80	82
70	66	67	200	203	97	94	200	202	73	72	68	67	66	68	73	75	80	82
78	66	66	200	201	98	95	200	202	73	70	67	69	65	69	73	75	79	81
77	62	68	205	92	97	93	200	204	76	72	69	69	65	68	71	74	79	81
79	64	69	204	94	92	201	205	91	75	70	69	67	68	71	73	75	80	81
77	63	69	201	84	79	93	203	209	81	75	71	70	69	68	71	74	76	78
74	67	67	206	98	84	204	205	208	81	76	71	73	71	69	68	70	78	79
70	68	64	200	200	95	97	204	202	81	77	73	72	71	68	66	69	78	81
68	65	63	96	201	96	94	203	206	80	79	74	71	70	69	67	69	76	80
66	64	63	96	204	95	92	204	202	80	78	75	72	70	70	68	70	75	79
69	64	62	97	203	96	96	202	200	89	76	74	71	70	71	68	69	76	79
69	63	62	97	203	98	97	202	201	79	76	74	72	71	70	68	69	76	79
68	63	62	96	202	98	96	203	200	78	75	73	71	70	69	69	70	76	78
67	63	62	96	201	97	95	204	99	77	73	73	71	70	69	69	71	77	79
67	63	62	96	99	96	96	204	97	75	74	72	72	69	69	70	70	77	78
65	63	62	97	200	95	96	202	95	77	74	72	72	70	68	69	70	77	78
67	64	63	98	200	94	97	202	94	80	77	75	71	70	68	68	68	76	79
64	63	62	96	202	95	97	204	95	80	78	75	70	70	70	67	66	75	78
67	62	64	91	202	94	98	205	94	80	77	76	70	69	80	67	60	76	78
69	72	63	98	201	93	96	206	93	81	75	75	64	59	60	67	60	75	79
74	66	65	96	200	93	96	207	92	81	78	76	64	60	64	58	59	77	77
51	68	64	95	99	94	97	207	90	81	78	76	67	66	66	70	67	77	78
68	67	61	96	201	93	93	207	88	81	78	76	68	67	65	69	68	78	77
67	65	62	97	99	96	96	206	86	80	78	77	68	67	68	68	68	79	78
68	64	63	98	97	96	95	205	87	80	78	77	67	68	68	67	68	79	79
33	57	65	208	96	91	94	205	85	80	77	75	68	69	68	66	66	77	81
57	70	69	98	94	89	94	205	83	80	76	75	69	69	68	65	65	76	79
68	71	68	99	92	88	93	206	83	80	77	75	69	69	65	64	64	76	77
71	66	65	97	91	87	94	205	80	81	76	75	70	70	67	65	63	76	77
68	63	60	90	89	96	204	80	81	76	76	71	71	65	65	63	75	77	
63	63	60	92	91	90	96	205	77	81	76	75	71	71	66	65	61	75	77
62	63	59	95	92	90	96	205	80	81	76	75	71	71	67	64	62	76	77
62	64	59	97	92	92	99	206	82	81	76	75	70	70	67	64	61	76	77
64	65	60	98	93	91	98	209	83	81	75	75	70	67	67	64	62	74	76
63	63	60	99	95	93	200	210	85	83	76	76	69	68	67	67	62	74	77
60	65	60	98	94	95	203	211	85	82	74	72	69	69	67	67	63	73	76
61	64	61	97	98	203	211	84	84	76	74	70	66	66	63	63	76	76	
38	64	64	20	20	20	26	24	23	20	18	16	14	12	10	8	6	4	2
3, 13, 19	6	7	19															

GRID # 19



MAILED 10  
DATE RECEIVED = 43100

GRID # 13

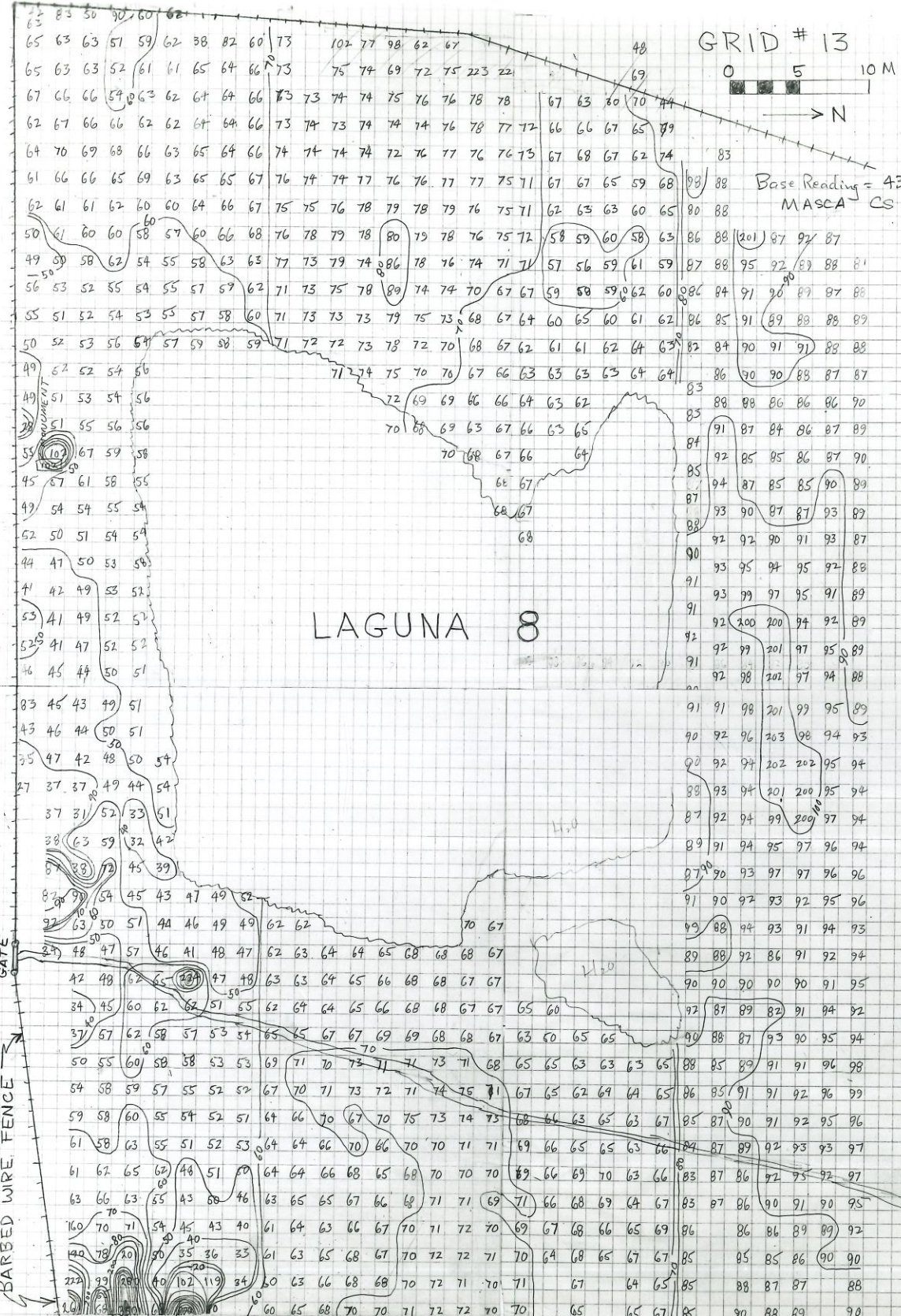


N

Base Reading = 43100  
MASCA CS

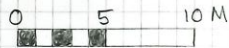
LAGUNA 8

BARBED WIRE FENCE



62 60 58 56 54 52 50 48 46 44 42 40 38 36 34 32 30 28 26 24 22 20 18 16 14 12 10 8 6 4 2  
3/6/69 6-1/13 167 173 3/6/69 @ 13 cont. 3/7/69

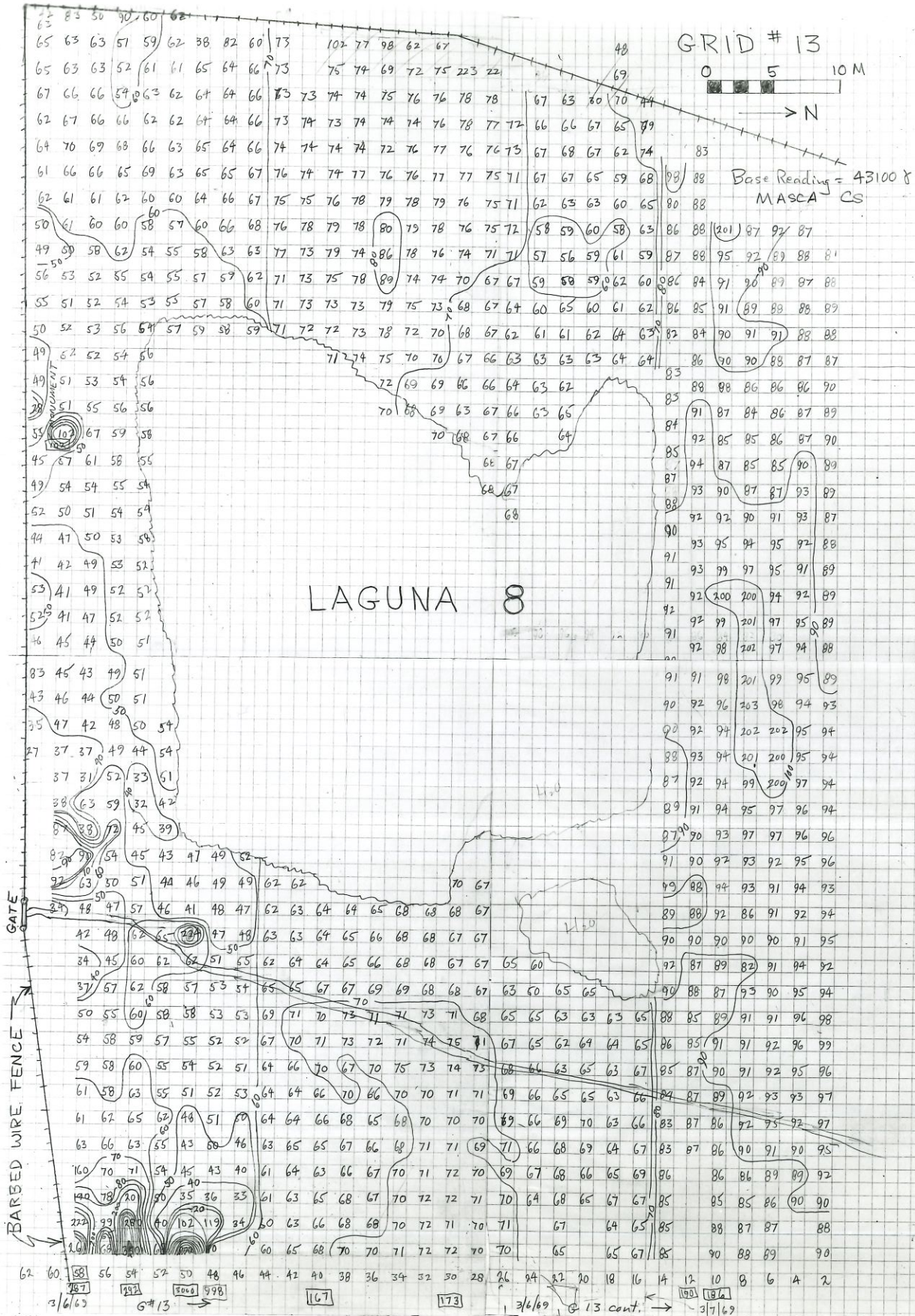
GRID # 13



N

Base Reading = 43100 x  
MASCA CS

LAGUNA 8



3/6/63

6#13

167

173

3/6/69

13 cent.

3/7/69

No. Olmecc Mead incl. negative

Name \_\_\_\_\_

Order \_\_\_\_\_

Remarks \_\_\_\_\_

Retouched \_\_\_\_\_

Order Finished \_\_\_\_\_

Reorder \_\_\_\_\_

Reorder \_\_\_\_\_

Beth

Is this fig 8

to go with fig #9





San Lorenzo, Mexico

No. Computer Plots 1:1000

Name Glossy prints

Order \_\_\_\_\_

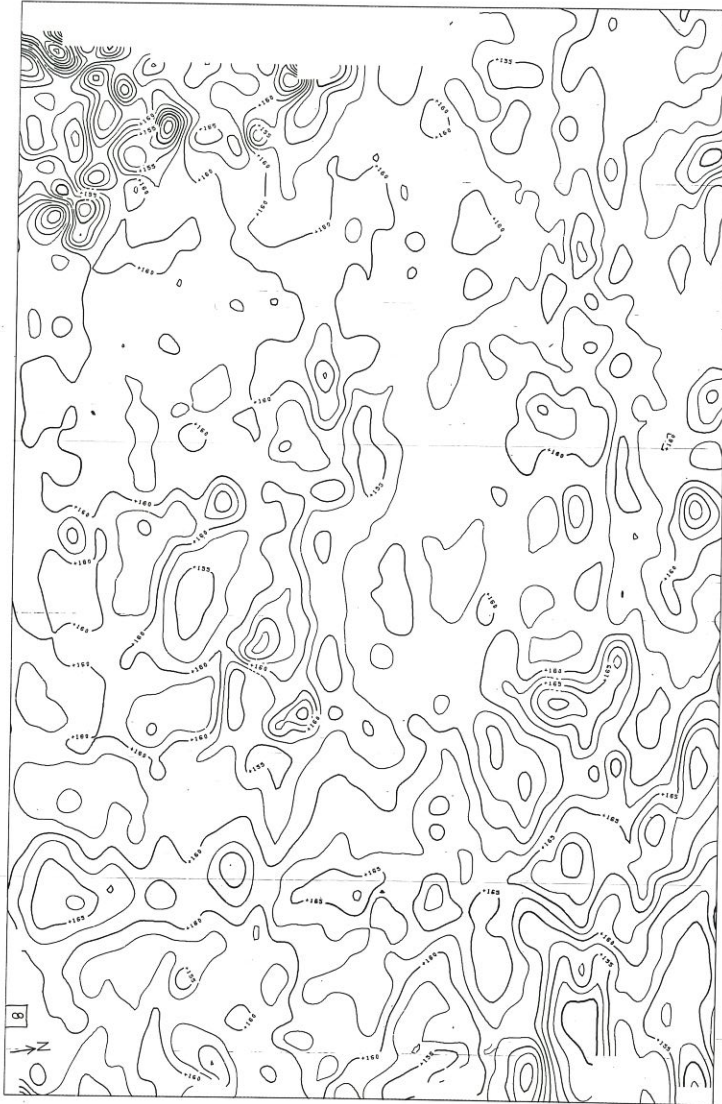
Remarks Orids - Feb. - March 1969

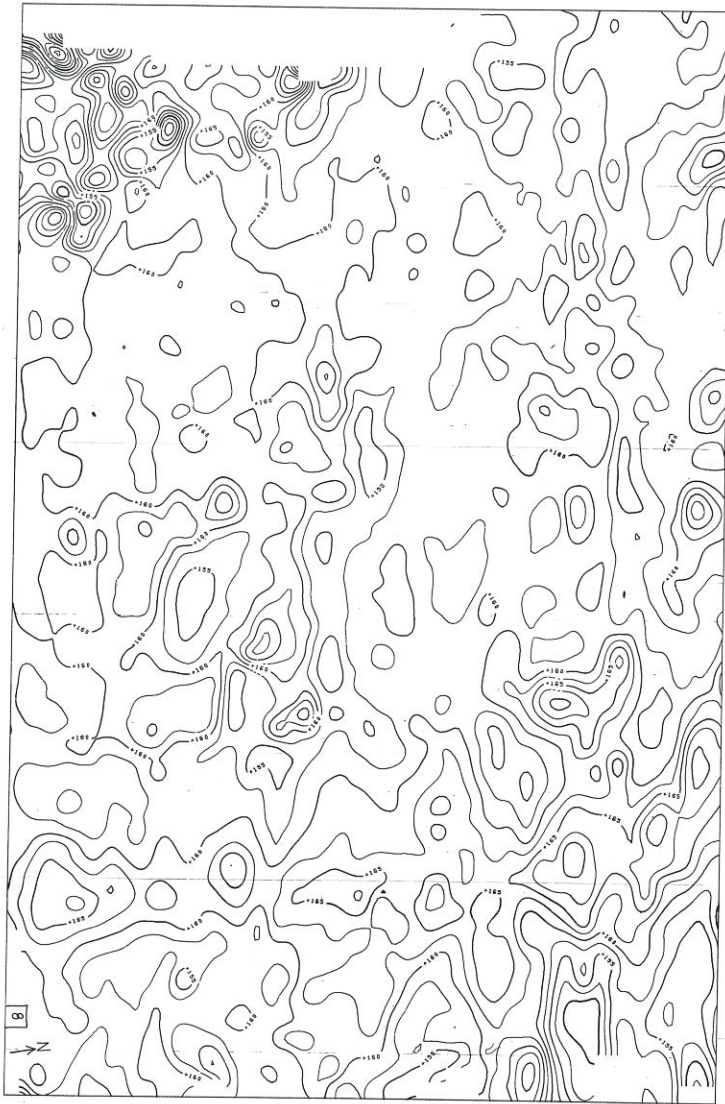
Retouched \_\_\_\_\_

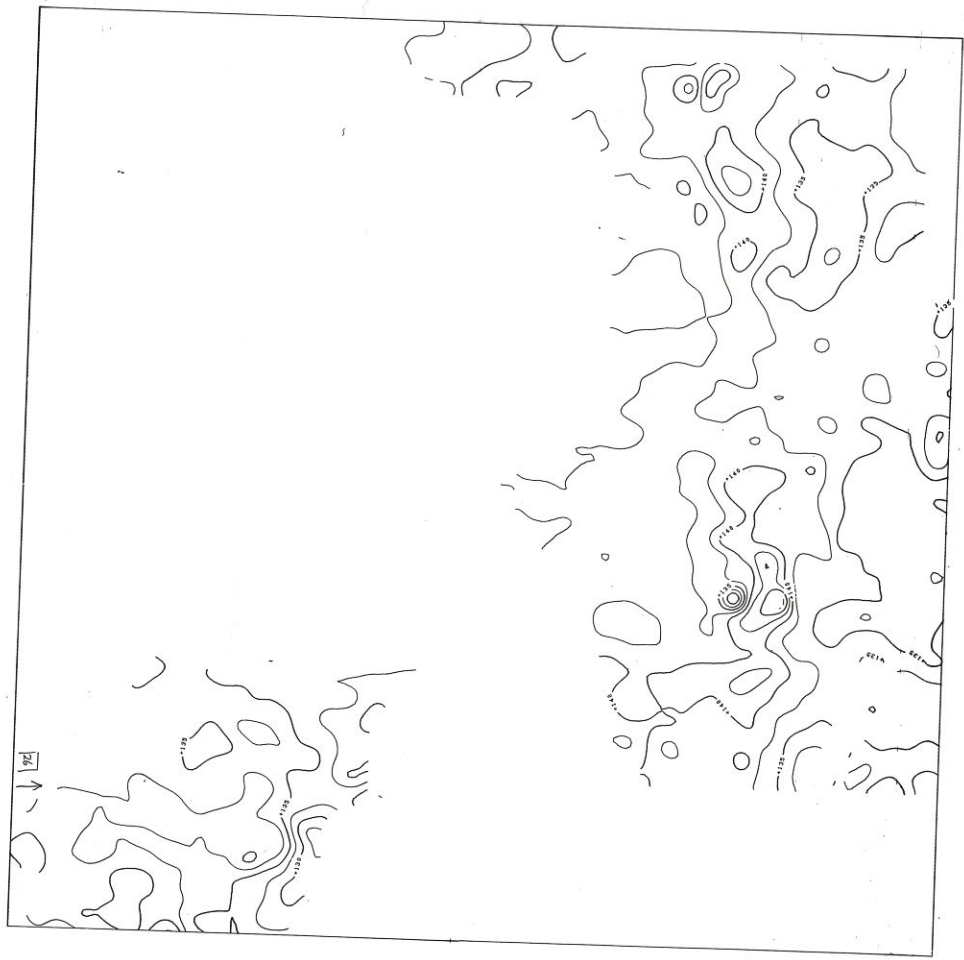
Order Finished \_\_\_\_\_

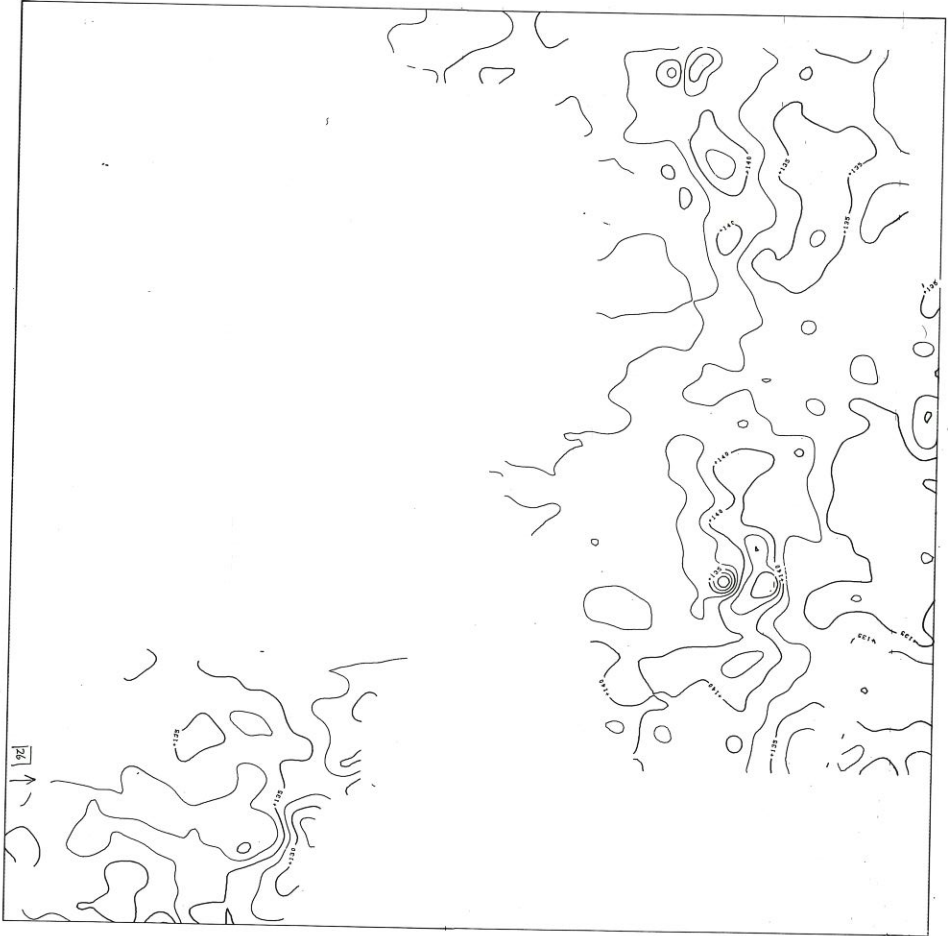
Reorder \_\_\_\_\_

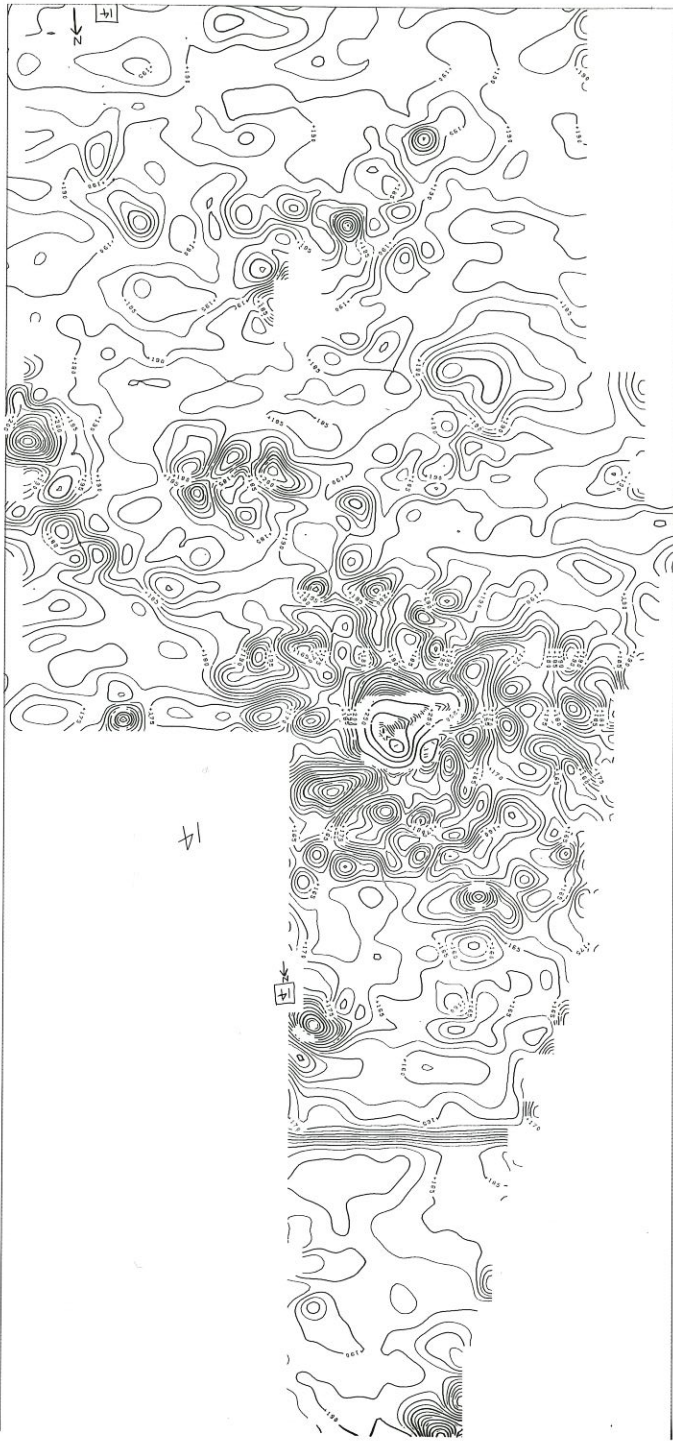
Reorder \_\_\_\_\_



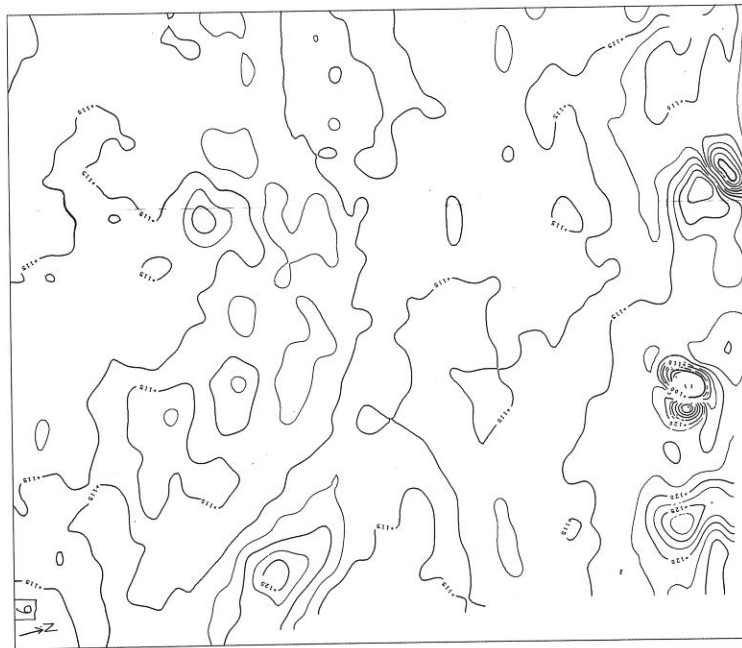
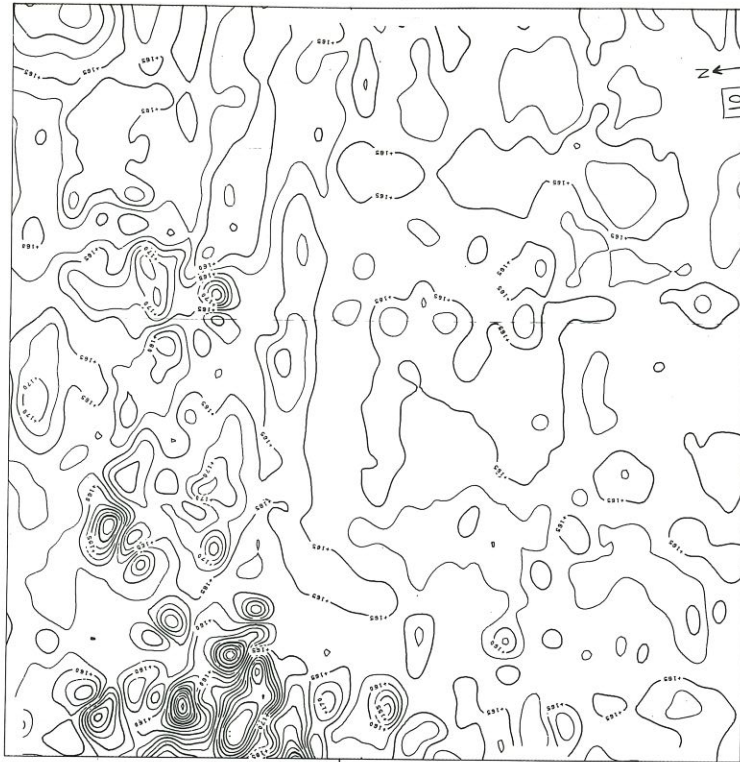


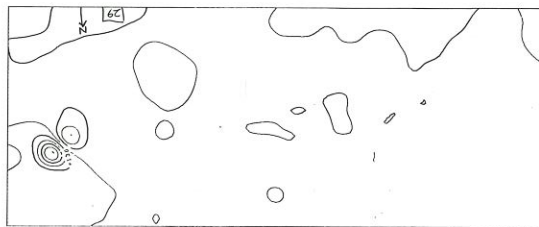
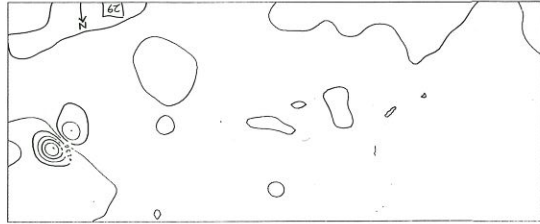


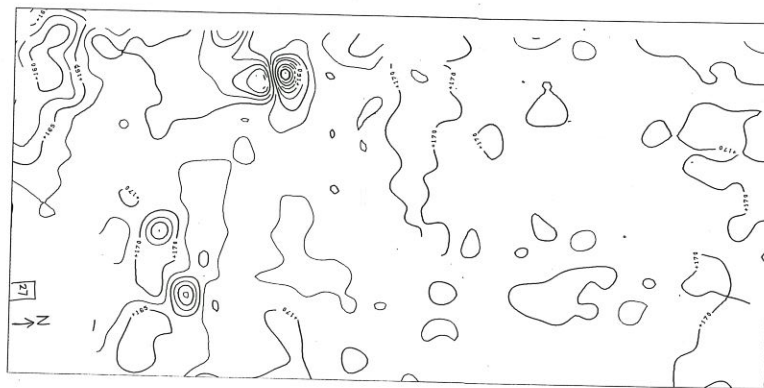
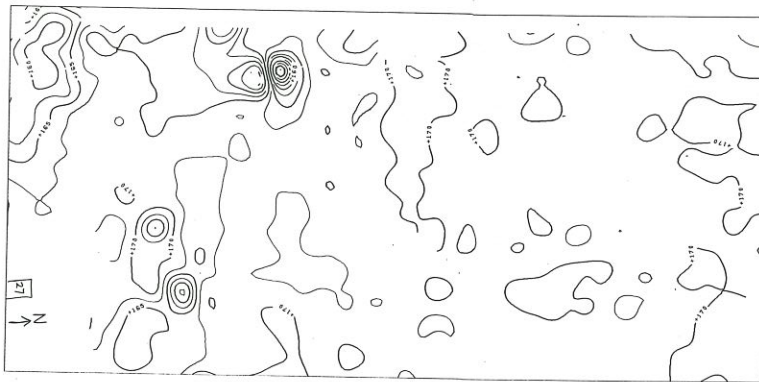




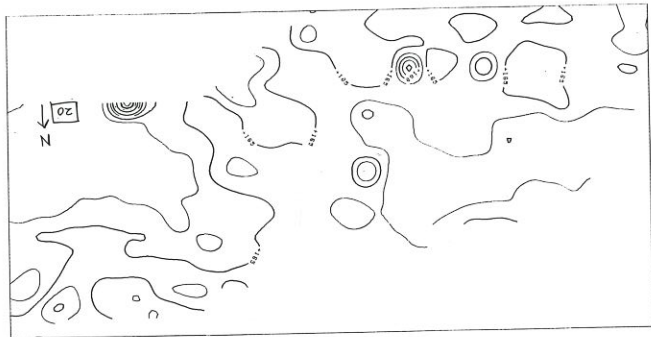
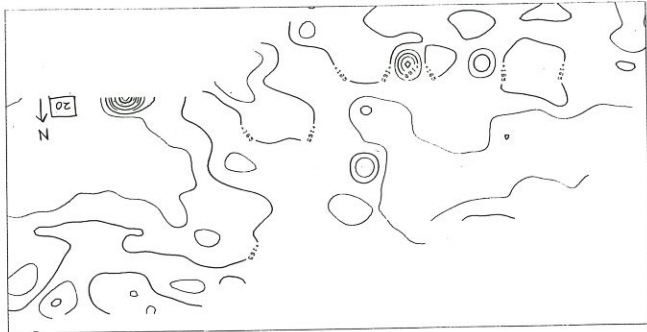


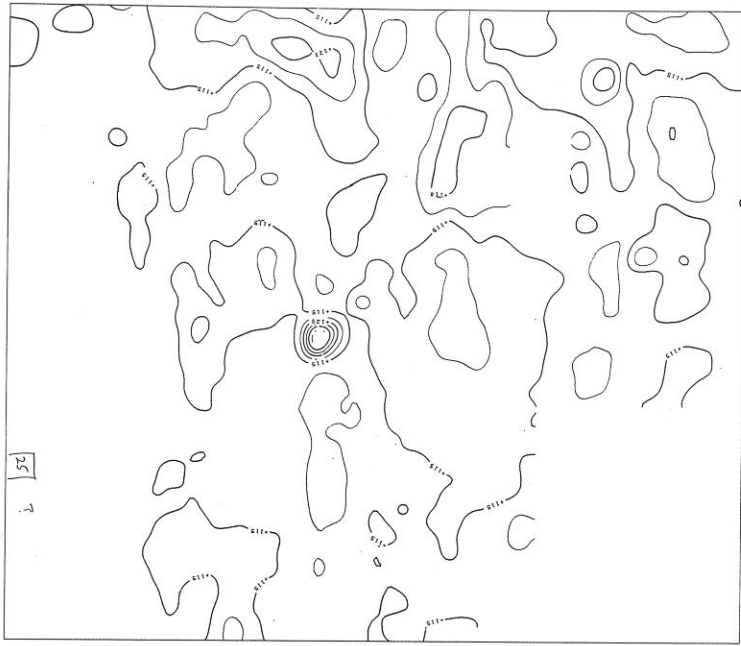












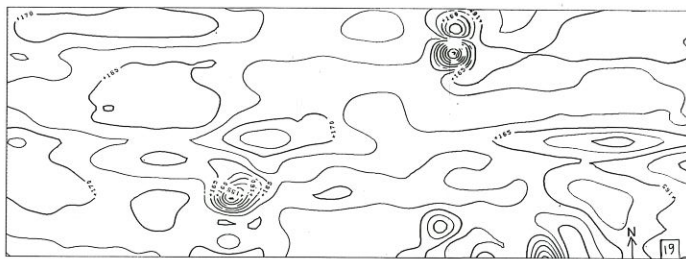
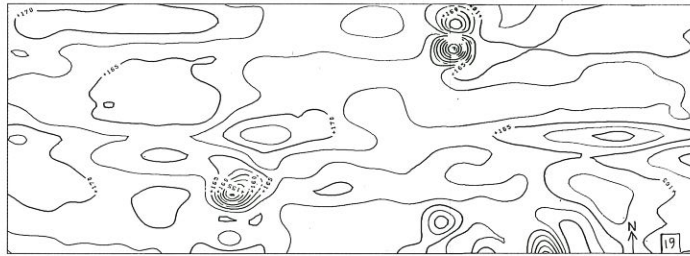
25  
7

25

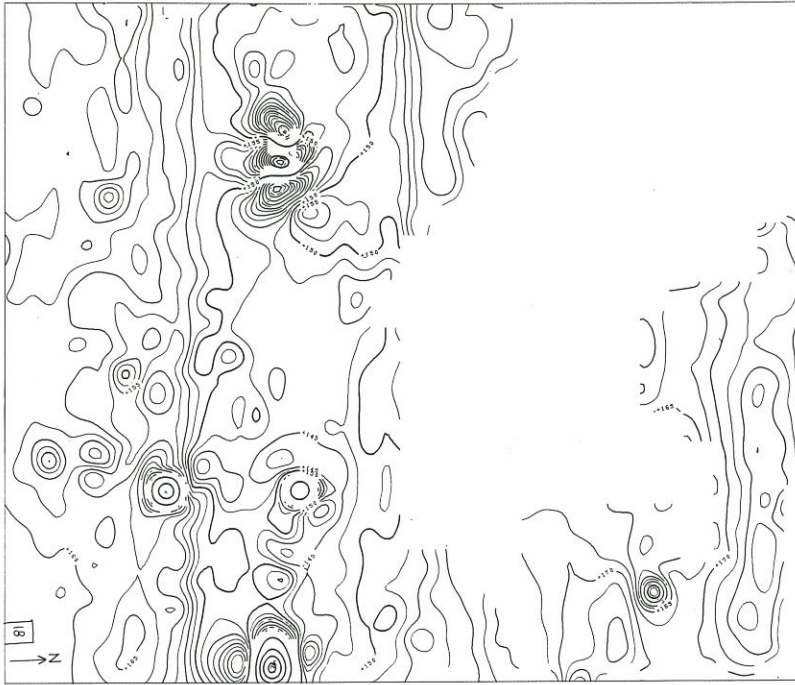


25  
7

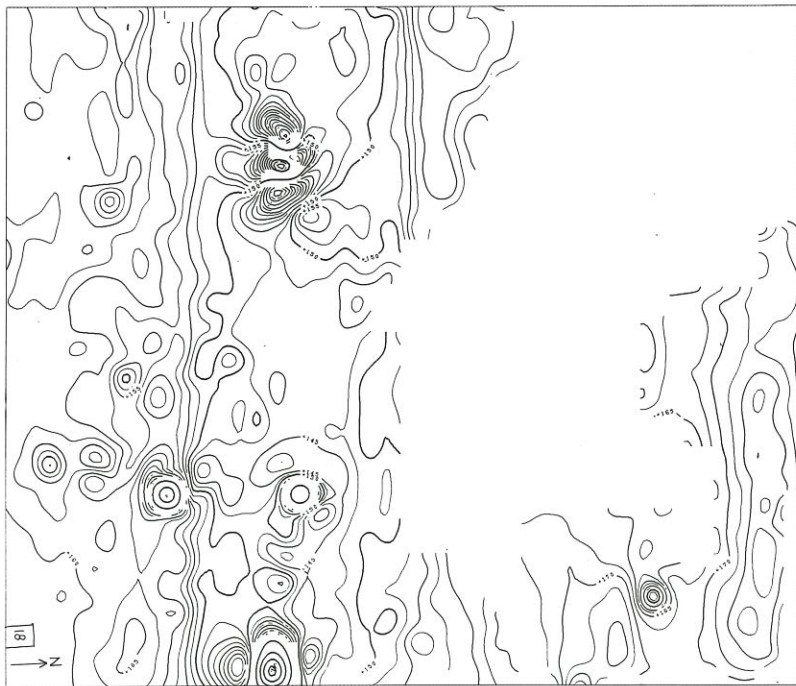
25

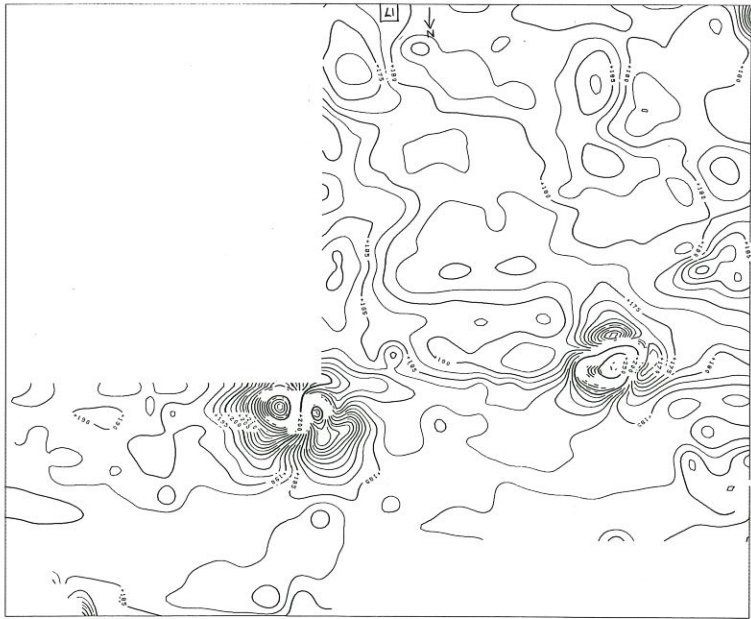
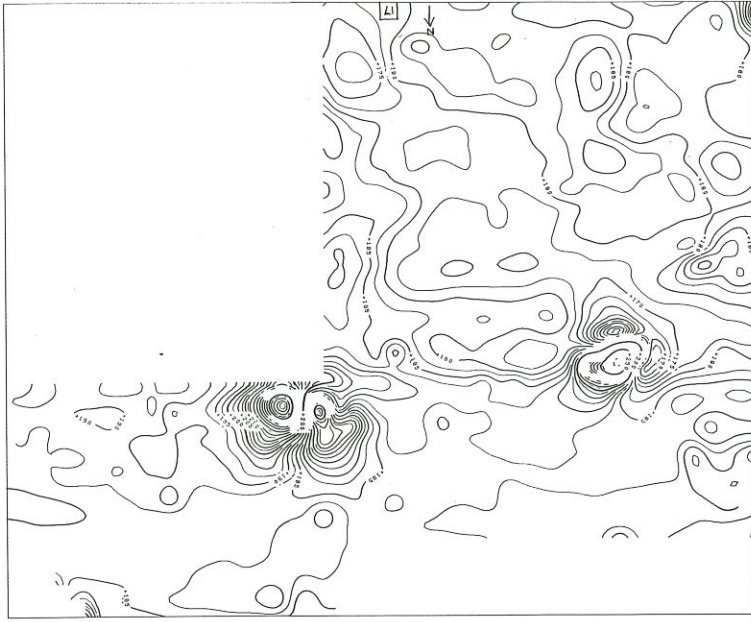


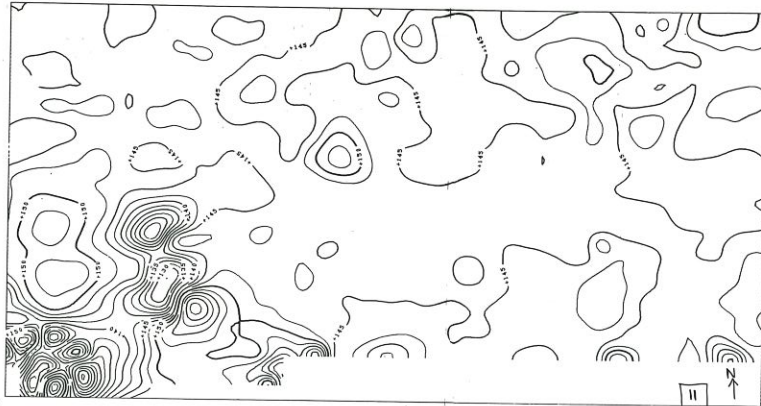
18



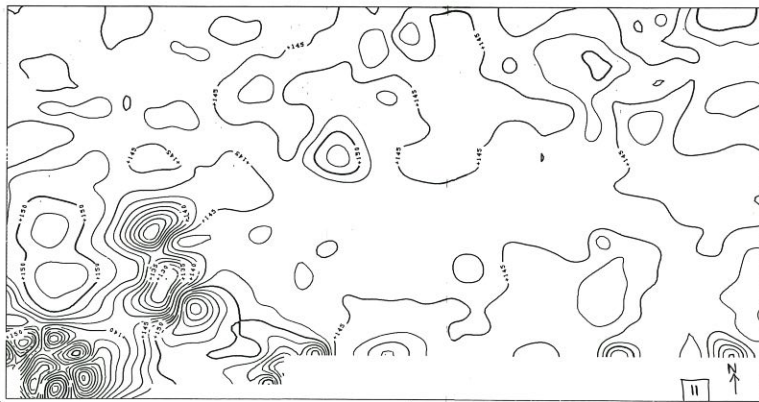
18



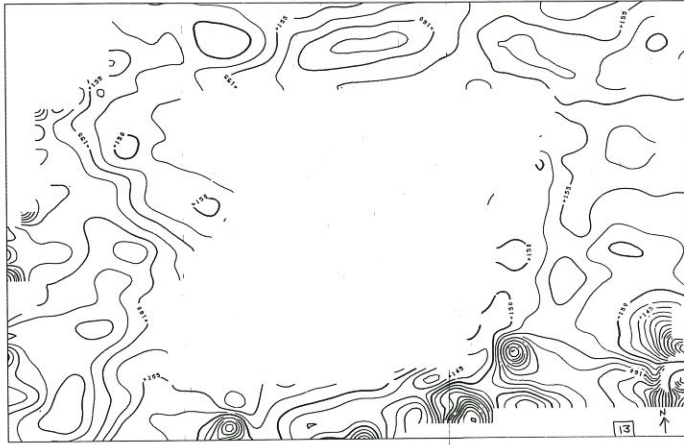


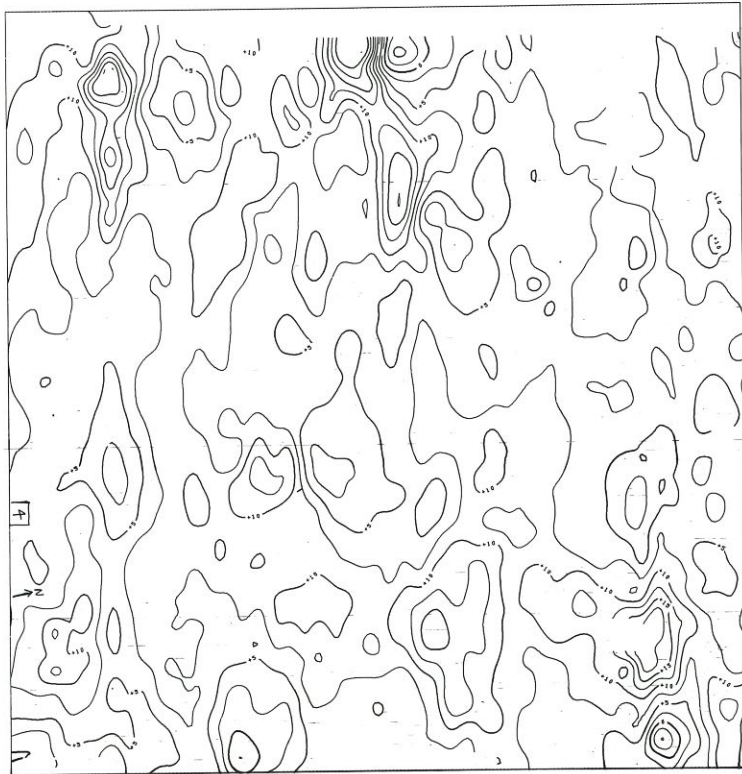
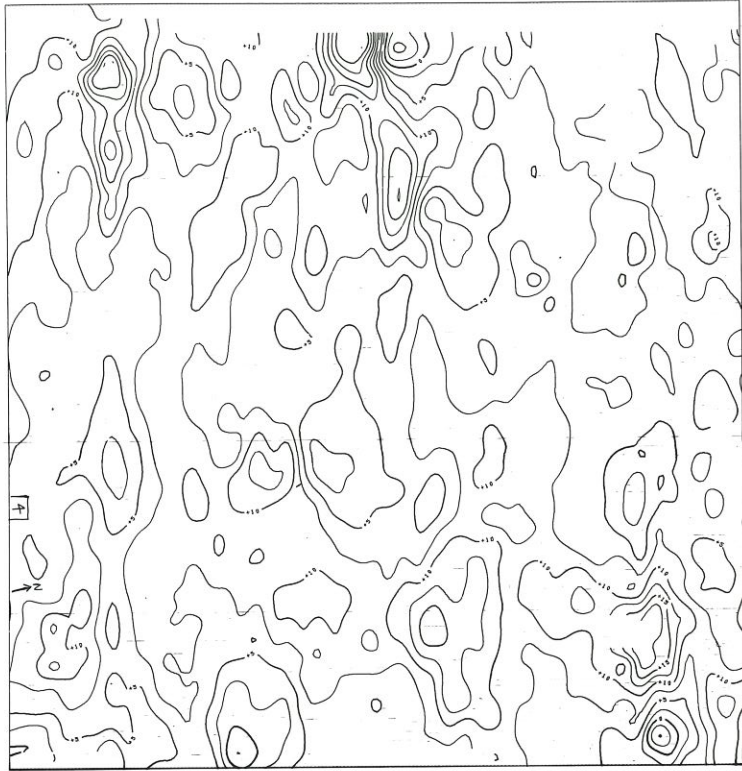


11

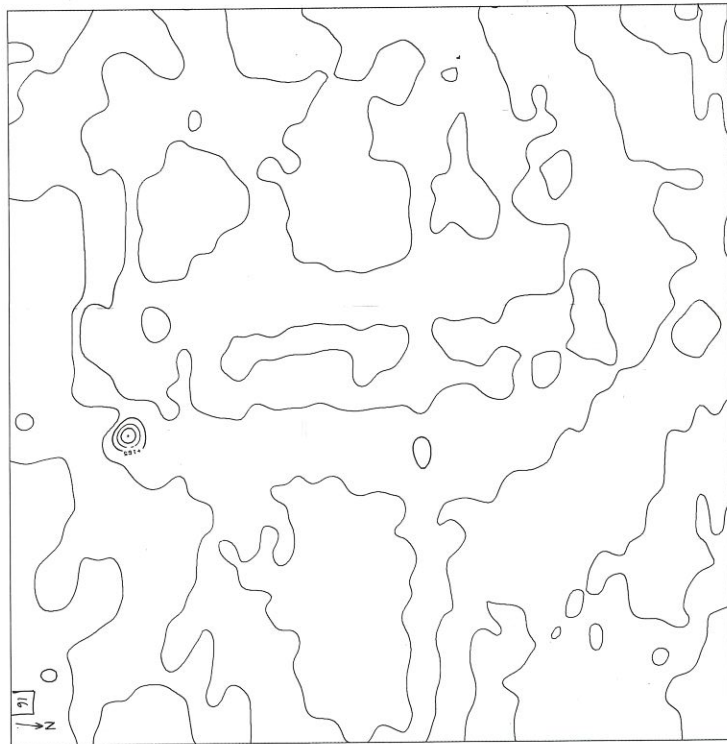
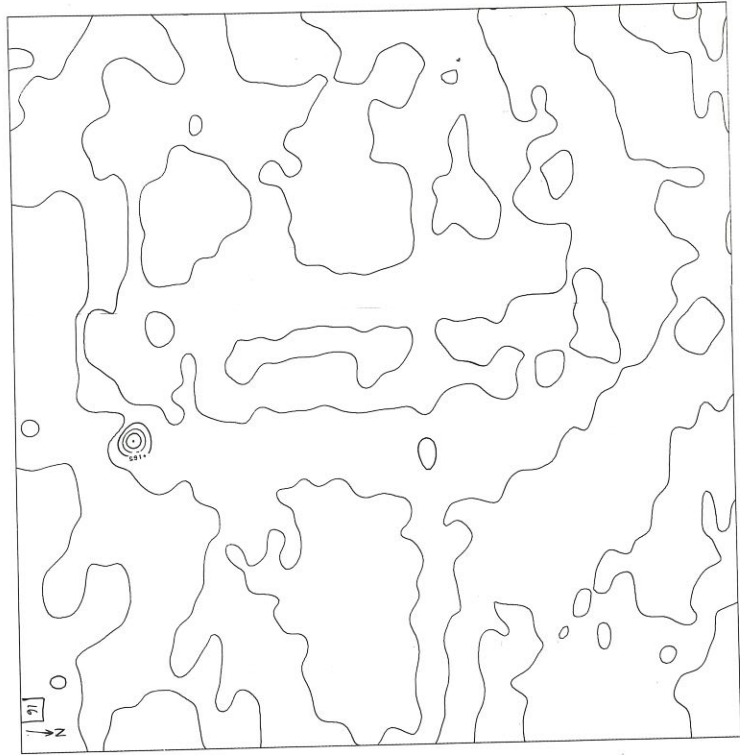


11









Beth,

Grid # 9 = Olmec Head  
(Fig 8)

I presume this is the one  
we have a photo of

Grid # 14 - Workshop  
(Fig 11 - no copy)

Grid # 17 - large column  
(Fig 13,  
attached)

Table 1. Summary of Magnetometer Survey, Winter 1969

Grid No.	Magnetic Anomalies	Results of Excavation or Interpretation
1	1 doubtful (line 20)	
2	none	
3	none	
4	none	
5	1 good (line 34)	No. 1-69. Consisted of approximately 20 basaltic rocks averaging 2-3 kg. each and found at a depth of about 45 cm.
	1 doubtful (line 60)	
6	none	
7	none	
8	small anomalies in southwest corner	Area of anomalies was recovered in G#14.
9	1 good (lines 8 & 10)	No. 2-69. Large Olmec head, approximately 2.55 m long, lying on its back side, at depth of 46 cm.
	1 doubtful (line 2)	No. 3-69. Nothing found in excavation.
10	1 doubtful (line 34)	
11	1 good (SW corner)	Anomaly at border of G11 & G13, but more pronounced in G13.
12	none	
13	1 good (SE corner)	No. 4-69. No basaltic rock found, but there was reddish earth which was probably magnetic
14	1 large & intense and many smaller ones surrounding it	No. 5-69. Appears to be the site of an Olmec workshop and contains many basaltic rocks.
15	1 large & intense (lines 20 to 30)	Anomaly previously detected by S. Breiner in 1968. Excavation revealed massive stone slab.
	1 doubtful (line 38)	
16	1 small (line 84)	Small torso found on surface of the ground.

Table 1. Continued

Grid No.	Magnetic Anomalies	Results of Excavation or Interpretation
17	1 very intense (lines 48 & 50)	No. 6-69. Large column, at least 2 m long, lying on side at depth of 50 cm.
	1 less intense (near old excavation pit)	
18	1 very intense (east end line 36)	
	1 less intense (west on lines 36 & 38)	
	1 intense but small (line 22)	Large stone, excavated previously.
	Several additional doubtful ones	One visible rock. No anomaly from visible section of drain.
19	1 doubtful (line 10)	Example of unusually large diurnal changes.
20	1 small (line 36)	Two meters away from large slab excavated previously.
21	none	
22	none	Example of negligible diurnal changes.
23	none	
24	none	
25	none	
26	none	Very small reaction of small excavated monument.
27	1 doubtful (line 18 W)	
28	none	
29	1 doubtful (line 10)	
30	none	
31	1 good	

Reprinted from  
September-October 1972  
Volume 60  
Number 5  
pp. 566-575

# American Scientist

## Magnetic Exploration of the Olmec Civilization

Sheldon Breiner  
Michael D. Coe

Reprinted from  
September-October 1972  
Volume 60  
Number 5  
pp. 566-575

# American Scientist

## Magnetic Exploration of the Olmec Civilization

Sheldon Breiner  
Michael D. Coe

Sheldon Breiner  
Michael D. Coe

# Magnetic Exploration of the Olmec Civilization

*Magnetic surveys have been highly successful in locating Olmec monuments at the site of the oldest known civilization in Mesoamerica*

The dream of all archaeologists has been an instrument that would allow them to "see" beneath the surface of the ground, even before excavation. Such an instrument has now been developed and successfully tested in the jungle country of southern Mesoamerica—that region of Mexico and Central America that was civilized before its conquest by the Spaniards.

*Sheldon Breiner, geophysicist with GeoMetrics, Palo Alto, California, received a B.S., M.S., and Ph.D. in geophysics from Stanford University. From approximately 1960 his work involved numerous field experiments utilizing the then newly developed high sensitivity alkali vapor magnetometers. His research led to such diverse projects as archaeological prospecting, petroleum and mineral exploration, micropulsation research, avalanche rescue, and earthquake prediction, the last being the subject of his dissertation. He is presently active in developing airborne and marine geophysical survey and interpretation techniques for mineral and petroleum exploration, and is a lecturer and Research Associate in the Department of Geophysics at Stanford University.*

*Michael D. Coe, Professor of Anthropology at Yale University, received his B.A. (1950) and Ph.D. (1959) from Harvard University. Before coming to Yale, he taught at the University of Tennessee. He is advisor to the Bliss Collection of Pre-Columbian Art at Dumbarton Oaks, Washington, D. C. His research interests are Mesoamerica and the origins of its civilization; recent studies include Maya iconography and cosmology. In connection with his research, he has excavated Olmec sites in southern Mexico and on the Pacific coast of Guatemala. His publications include Mexico (1962), The Jaguar's Children (1965), The Maya (1966), and America's First Civilization (1968).*

*The authors wish to thank Froelich Rainey and Miss Elizabeth Ralph, of the Applied Science Center for Archaeology of the University of Pennsylvania; Ignacio Bernal, of the Instituto Nacional de Antropología e Historia, Mexico; D. P. O'Brien and A. R. Edberg of GeoMetrics; and Varian Associates of Palo Alto, California. Addresses: Dr. Breiner, GeoMetrics, 914 Industrial Avenue, Palo Alto, CA 94303; Dr. Coe, Department of Anthropology, Yale University, New Haven, CT 06510.*

It is now known that the Olmec civilization, dating from approximately 1200 B.C. to 400 B.C., was the earliest of these native cultures (1). Most Olmec sites are concentrated in a relatively small heartland along the humid, fertile coastal lowlands of southern Veracruz and Tabasco, but some colonial Olmec centers have been found in the central Mexican highlands and in the state of Guerrero. The primary jungle sites are best known for their magnificently carved monuments, usually made from basalt and weighing up to forty tons. The most striking are the colossal heads—gigantic stone portraits of rulers who are depicted as thick-lipped, flat-faced personages wearing what appear to be helmets. In both the monumental carvings and the finely worked objects of jade and serpentine, the dominant themes seem to be religious symbolization of gods, represented by a combination of the jaguar and the human infant.

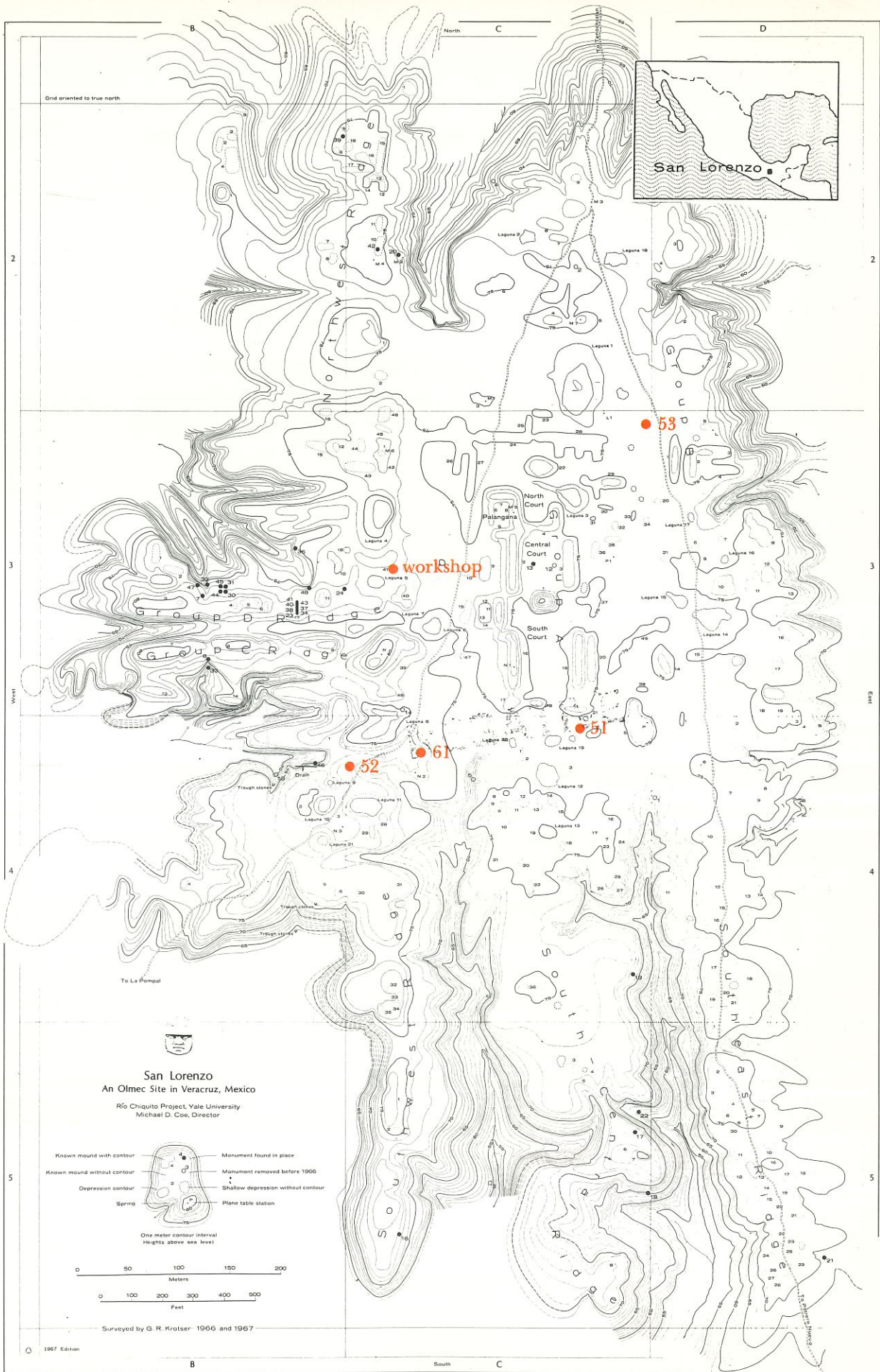
Of the four largest Olmec sites in the heartland, the oldest (2) now appears to be San Lorenzo, located on a side branch of the Coatzacoalcos River in southern Veracruz (Fig. 1). This center, discovered in 1945 by Matthew W. Stirling (3), of the Smithsonian Institution, quickly proved to have the finest and largest Olmec monuments of all. During the two years that he explored San Lorenzo, the carvings were typically discovered either at the bottom of deep ravines cutting into the site or on their slopes. None was found in its original position, and Stirling concluded that they had been pushed over the side by non-Olmec invaders at some unknown time.

Intrigued by the possibilities of throwing new light upon this ancient civilization, Coe (4) began in 1966

a long-term investigation of San Lorenzo, under the auspices of Yale University and the Instituto Nacional de Antropología e Historia in Mexico, financed by the National Science Foundation. The first line of inquiry was into the nature of the site itself, which had never been mapped. It was discovered that San Lorenzo was a flat plateau about a kilometer and a quarter long in the north-south direction, with ravines extending from it on the northwest, west, and south sides. Rather than being formed by erosion, the ravines were man-made, resulting from the construction of enclosing ridges, obviously planned. Pairs of them proved to have mirror symmetry, such as a mound on one side being neatly matched by one on the opposite ridge.

Our second discovery, made through ceramic stratigraphy and radiocarbon dating, was that about 900 B.C. a major act of destruction took place at San Lorenzo. Every single piece of carved stone had been mutilated and then dragged onto specially prepared floors built on the ridges, which were completely covered by a fill composed of soil, gravel, and other debris. The monuments that Stirling discovered centuries later in the ravines had simply come to light through the gradual erosion of this fill.

Figure 1. This greatly reduced map of San Lorenzo in southern Veracruz, Mexico, shows the general outline of the plateau with the ridges and ravines. Note the symmetry of the ridges on the south and west sides of the plateau. The monuments indicated by small circles on the map were found before the magnetometer survey. The colored circles show the location of Monuments 51, 52, 53, and 61, which are among the more important objects discovered during the survey.



The discovery of this pattern of buried sculptures was purely accidental, a piece of luck that occasionally turns up on every expedition. The possibility immediately suggested itself that a great number of other Olmec carvings might still lie under the soil of San Lorenzo. How could these be found? Having had experience in the use of magnetometers for archaeological exploration, Froelich Rainey, Director of the University of Pennsylvania's Applied Science Center for Archaeology, suggested using such instruments at San Lorenzo.

in finding ancient Sybaris, 6), in England, and in North America.

### Magnetic anomalies at archaeological sites

The magnetic anomalies of significance in archaeological exploration are caused by the contrasting properties of the cultural feature and the soil, water, or rocks covering it (7). The amount of the very common mineral magnetite in the feature as well as its mechanical and thermal history usually determine the size



Figure 2. View of the Tuxtla Mountains from San Lorenzo, Mexico. Basalt rock from these mountains was transported approximately 70 kilometers to San Lorenzo, where it was carved into monuments.

Several geophysical techniques based on magnetic, electrical, seismic, or gravimetric methods have been used in archaeological prospecting (5). Magnetic surveying has proved to be by far the most practical and useful. Although not a common tool in archaeological kits, magnetometers have been utilized during the past decade at various sites around the Mediterranean (where they helped

of the disturbance, or anomaly, in the earth's magnetic field, which is actually measured by the magnetometer. Various rocks, soils, and objects foreign to the site possess different magnetic properties owing to the widely varying amounts of magnetite and whether or not the magnetic elements of the magnetite grains of the feature are aligned, i.e. the relative proportions of induced and remanent

(permanent) magnetism. Buried rocks, walls, artifacts of various types, tombs, trenches, and other such features are all detectable under the right circumstances.

The most prominent magnetic anomalies are usually caused by natural materials that have undergone heating. Clay objects that have been subjected to high temperature, such as bricks, tiles, pottery, and firepits, attain a remanent magnetism as a consequence of the alignment of their magnetically susceptible elements with

First of all, we had to determine whether or not magnetic surveying would aid the exploration of San Lorenzo, since most sites are, in fact, unsuitable for this technique. In February 1968, Rainey assessed conditions there and obtained samples of the monuments and of the fill in which they are principally buried. The induced and remanent magnetization of the monuments proved to be  $2 \times 10^{-4}$  and  $4 \times 10^{-4}$  emu, respectively, contrasted with a total magnetization of the fill of less than  $3 \times 10^{-5}$  emu. Thus, there was



the earth's magnetic field during the process of cooling. Such remanent magnetism is also a property of rocks that have been heated in nature, especially volcanic or igneous rocks. Almost all the San Lorenzo monuments were carved from such rock—basalt—which is not native to the area but which was laboriously brought in from the Tuxtla Mountains, some 70 kilometers to the northwest (Fig. 2).

enough difference between the magnetism of the objects and the surrounding fill to make San Lorenzo an ideal site for the effective use of magnetic surveying. Further, there are no deeper-lying rock strata at the site to interfere with the observed anomalies; in fact, because there are no "natural" rocks, all anomalies would be significant. Finally, San Lorenzo is happily remote from any

Figure 3. Surveying the San Lorenzo site with the magnetometer.

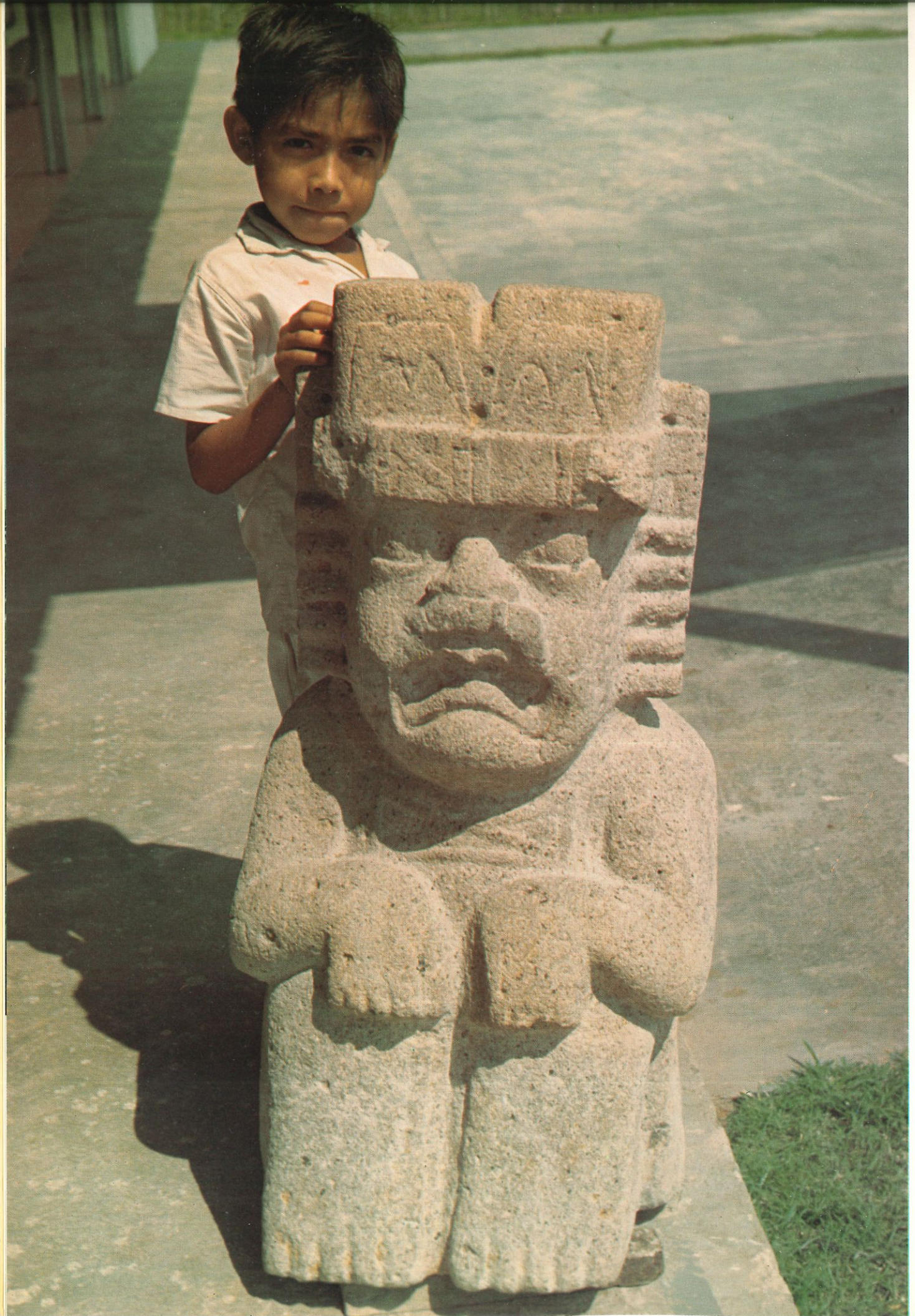


Figure 4. This figure, over one meter high, represents the rain god (Monument 52) and is one of the finest of all Olmec sculptures. It was found as a result of the preliminary magnetometer survey.

recent man-made implements, vehicular traffic, other iron and steel interference, and electric power lines.

### Magnetic surveying

The following month we brought a portable cesium magnetometer to San Lorenzo (Fig. 3). This instrument has a sensitivity of 0.1 gamma ( $10^{-6}$  oersted) and can be operated in either a "search" or "survey" mode (7, 8). As a search device, it was used to take occasional readings visually or audibly, noting more the location of the anomaly than its amplitude. This mode is useful for rapid reconnaissance, for obtaining an overview of site conditions, and for tracing long anomalies (such as a wall). We chose initially to traverse San Lorenzo on horseback, particularly in the high grass and some dense forest areas. The local saddles were made of wood, and there were no steel horseshoes to interfere with the instrument. Almost immediately, we located an anomaly and estimated the depth of what turned out on excavation to be one of the finest of all Olmec sculptures—a rain god with typical half-human, half-jaguar features (Fig. 4), lying at the predicted depth of  $2\frac{1}{2}$  meters at the head of a buried drain system. Several more monuments were found in this manner, and archaeologists were as mystified as the local workmen at the uncanny ability of the magnetometer to "see" buried objects.

It was necessary, however, to conduct a survey systematically in order to obtain complete coverage of the area and to find objects that responded less noticeably to the sensor or that were more deeply buried. This required that we produce a magnetic map of the entire San Lorenzo

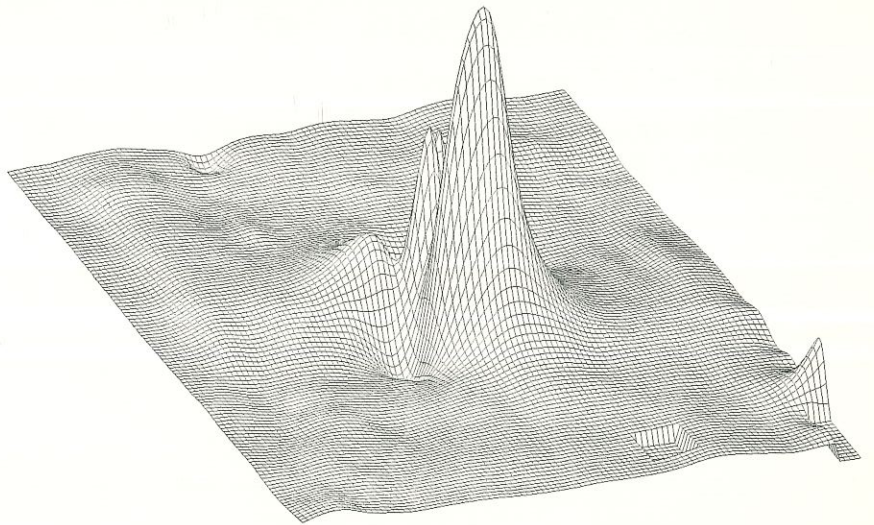
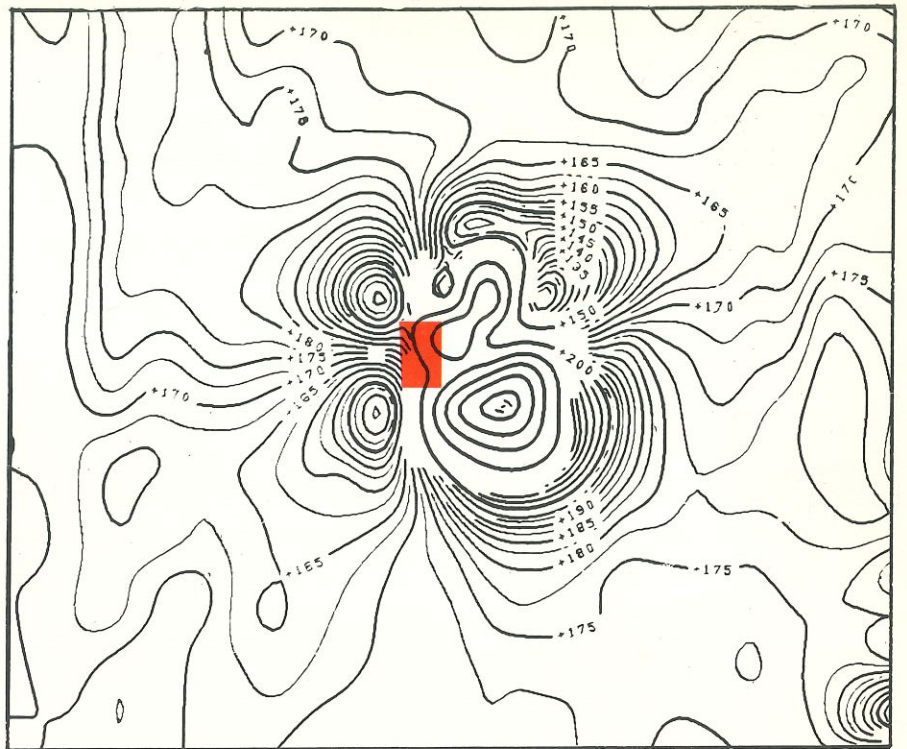
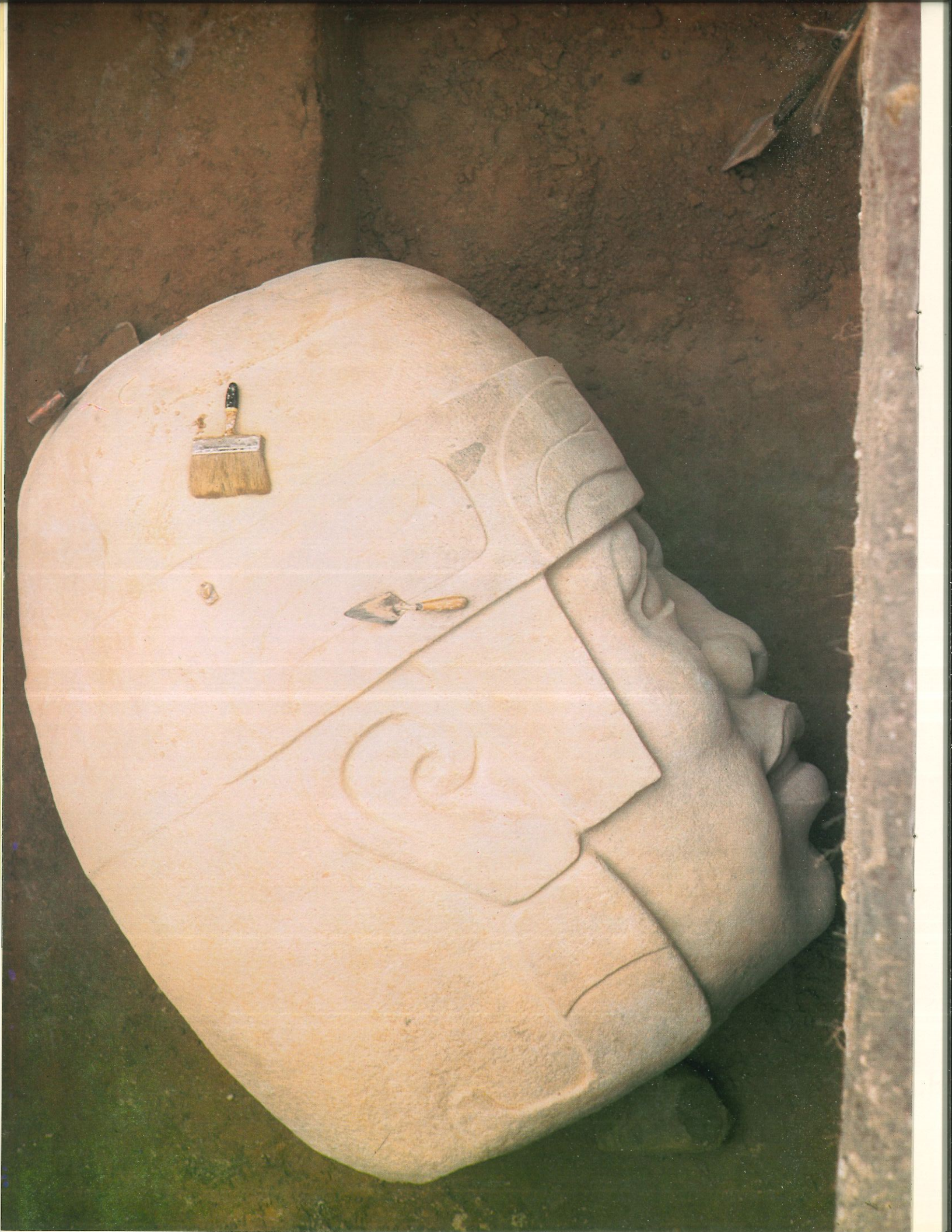


Figure 5. Total magnetic intensity contour map (above) and perspective view of contoured data (center) over a buried Olmec altar (Monument 51), shown (below) after excavation. The altar caused the prominent anomaly in the center, indicated by the colored block; other anomalies are caused by neighboring small monuments. The sharply defined square depression on the perspective view is the effect of missing data. The map represents an area approximately 50 meters on a side.



plateau, a program that was largely completed in the following field season by Elizabeth Ralph, of the Applied Science Center of Archaeology of the University Museum of the University of Pennsylvania. Mapping procedures using the instrument in the survey mode require that measurements be made on a regular grid whose dimensions are determined by the probable size and maximum depth of the anomalies of interest. We decided to seek Olmec monuments with a minimum size of one cubic meter, large enough to produce an anomaly detectable at a maximum distance of about 2 to 3 meters. This indicated a grid interval of 2 meters for the entire surface.

We divided up most of the accessible parts of San Lorenzo into approximately 31 major grids measuring 100 meters on a side. Ropes were marked off in 2-meter lengths and laid on opposite sides of each grid. A third rope marked similarly was laid between them along corresponding marks. A reading would be taken over each mark on the latter rope with the magnetometer held one-half meter above the ground. A total of 80,000 measurements were taken in this manner and transcribed to field notes or into a portable tape recorder held at some distance from the site of the measurements. Unfortunately, the steep terrain and dense forest precluded coverage of many areas of the plateau.

There are some inherent problems in a survey of this sort. One of the most serious is that the measurements show not only the magnetic variations of the underlying monuments and artifacts but also extraneous time variations of the magnetic field. These solar-induced time variations, called micropulsations or diurnal variations, make it difficult to sort spatial from time anomalies. To remove the major effect of the time variations, a constant value was added to or subtracted from each point on a given line to make the average value of that line equal to the average of the entire grid. Large line-to-line level offsets were thus eliminated, allowing for the preparation of a more presentable contour map.

Figure 6. A colossal Olmec head (Monument 61), buried at a depth of approximately 5 meters, was the most perfectly preserved large sculpture found at San Lorenzo.

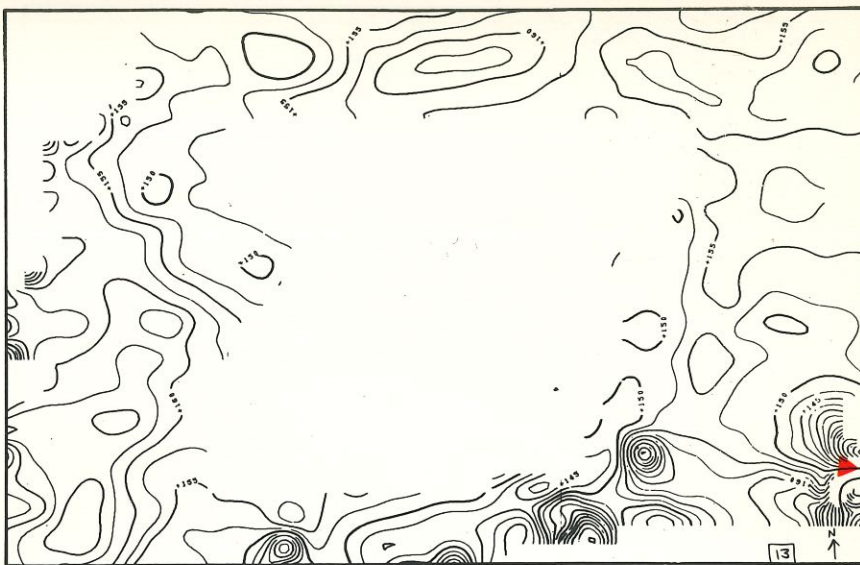


Figure 7. Contour map of magnetic intensity over Monument 61 (shown in Figure 6). The head was found under the anomalous area indicated by the colored marker in the

lower right-hand corner of the map. The area at the center of the map was covered by a large artificial pond, where no measurements were made.

The survey results showed the effects of deposits of physically small but anomaly-producing artifacts, especially stone debris from ancient workshops. Also, because of the large grid interval, the effect of some moderately large monuments appeared principally on one grid point and only very subtly on several adjacent points, and the effect of very small monuments appeared on one grid point alone. In both cases there were doubts about the significance of that single data point. For all grids, therefore, we computed what the magnetic field would have been at an elevation one meter higher. In this way, more weight would be given to the subtle effect at neighboring points, thereby establishing greater confidence in the location and existence of an object of significant size, while the effect of the very shallow, small, and insignificant anomalies would be almost completely eliminated. This process, known in geophysical exploration as "upward continuation," is a mathematical technique based upon accurate knowledge of all the data on a plane surface.

Using points 2 meters apart does not produce a readily interpretable contour map, nor does it allow for much refinement in the location and character of the anomalies. We therefore computed, from the original 80,000 locations, an additional 400,000 points, using the bicubic spline tech-

nique, a method for low-order interpolation between the already established values. All the points thus computed were used to derive total magnetic field intensity contour maps of approximately 300,000 square meters over the San Lorenzo plateau, an enormous job accomplished by using a very efficient technique of electrostatic plotting. The maps were then interpreted for the precise location, depth, and estimated size of the anomalously magnetic features. Three-dimensional perspective views of the contoured data were also derived to portray vividly the complex magnetic field variations observed over the relatively simple geometric shapes of the monuments, as shown in Figure 5.

## Survey results

The survey occupied three field seasons, during which archaeologists from Mexico's Instituto Nacional de Antropología e Historia and from Yale University conducted the digging to test whether there actually were monuments under the mapped magnetic anomalies. The largest and/or shallowest monuments, as determined above, were excavated first. Of course, some "dry holes" resulted from such features as burned soils or stone workshop debris (Fig. 9), but most efforts were crowned by success. Seventeen Olmec monuments were discovered that would otherwise have completely eluded even the shrewdest and most

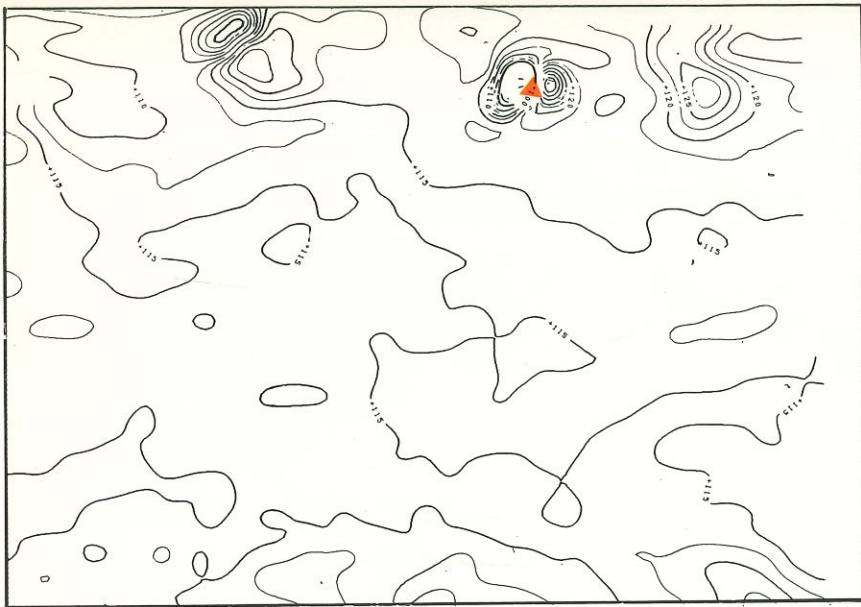


Figure 8. Contour map (*above*) of total magnetic intensity of a grid containing the colossal Olmec head (Monument 53) (*below*). The anomaly caused by the head is indicated by the colored marker at the top of the map.

patient archaeologist. The majority were not in the ridges (where the magnetic survey was incomplete) but on the central part of the San Lorenzo plateau, where we had not expected to find them. Among the most impressive were two new colossal heads: Monument 53, found lying face up and less than one meter deep, wears a unique helmet embellished with a pair of hands (Fig. 8); Monument 61, without doubt one of the finest masterpieces of pre-Columbian art, is a perfect, unmitigated sculpture which had been buried in a pit at a depth of 5 meters, presumably very early in the San Lorenzo phase (Figs. 6 and 7). It was missed by the iconoclasts in their mass act of destruction at the site.

Other stones included stelae, columns (one decorated with a bas-relief scene showing a man and a jaguar), fragments of oblong "altars," and a round "altar." One of the stelae bears a motif completely new to Olmec iconography, an extraordinary fish with the head of a jaguar, of entirely unknown significance. Monument 52, the important statue of the Olmec rain god, has already been mentioned.

The center of the mesa at San Lorenzo is occupied by a "pyramid" and a rectangular set of ridges extending in a north-south direction. The ridges exhibited a magnetic anomaly conformable to their topography, suggesting that their cores are composed of uniformly magnetic soil or other such material. The pyramid itself was entrenched through to its "floor" and the interior of the trench explored with the magnetometer for evidence of monuments. Clay materials, magnetic rock fragments, and uniformly magnetic stratified horizons were noted, but no monuments were detected or found.

After the San Lorenzo magnetic survey, the magnetometer was tried out on a similar pyramid at the great Olmec site of La Venta by Morrison et al. (9), of the University of California. One anomalous area was noted not far below the summit of the structure.

The magnetometer is thus a reliable and, so far, unique instrument for the prospecting of Olmec sites. It can save immeasurable time and expense in guiding excavations for the relatively "obvious" anomalies detected

at such ideal sites as San Lorenzo. The magnetometer may also find use in the search for buried features producing "negative" anomalies, that is, features in the ground that have zero magnetization in contrast to their surroundings. Such features might be the hidden openings of underground tombs, such as those detected with the use of a magnetometer by Linington (10) in Italy. Tombs and buried entries are relatively common in the New World from western Mexico to Colombia.

It should be emphasized, however, that most sites are not suitable until proven otherwise through some knowledge of the magnetic properties of the archaeological features and the surrounding materials. Furthermore, someone experienced in magnetic surveying should be present, because the procedures of measurement and the interpretation of the results are still too complex for an archaeologist untrained in these techniques to carry out by himself. Under the right conditions, however, magnetic exploration should be a standard procedure at archaeological sites around the world.

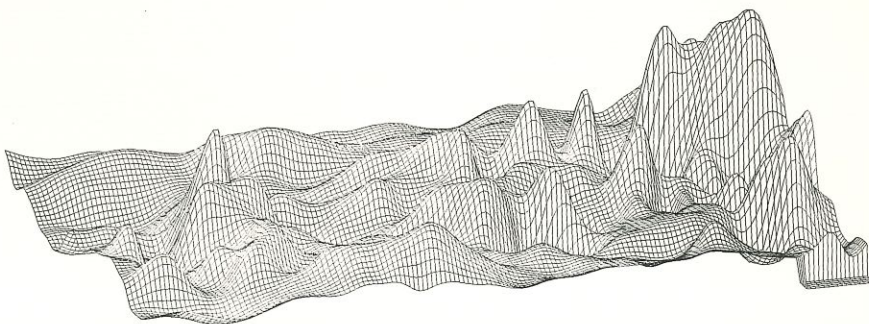
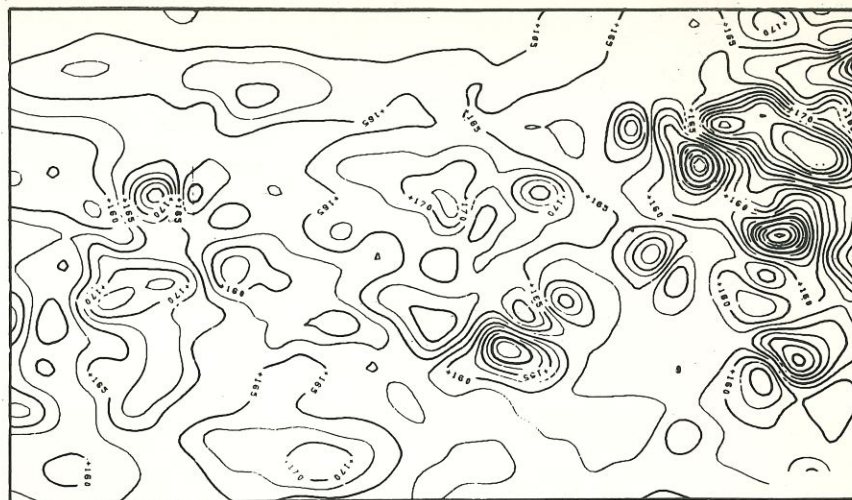


Figure 9. Total magnetic intensity contour map (above) and perspective view of contoured data (below) over an area described as a "workshop" and underlain by numerous small rock fragments possibly derived from monuments.

## References

1. M. D. Coe. 1969. *America's First Civilization: Discovering the Olmec*. New York: American Heritage.
2. M. D. Coe, R. A. Diehl, and M. Stuiver. 1967. *Science* 155:1399.
3. M. W. Stirling. 1955. Stone monuments of Río Chiquito, Veracruz, Mexico. *Bureau of American Ethnology Bulletin* 157:5-23.
4. M. D. Coe. 1968. San Lorenzo and the Olmec civilization. Appendix I: "Radiocarbon dates from San Lorenzo Tenochtitlan." Appendix II: "Stone monuments of San Lorenzo." In *Dumbarton Oaks Conference on the Olmec*, Elizabeth P. Benson, ed. Washington, D. C.: Dumbarton Oaks Research Library and Collection, Trustees for Harvard University, pp. 41-78.
5. M. J. Aitken. 1961. *Physics and Archaeology*. London: Interscience, p. 2.
6. F. Rainey. 1969. *American Journal of Archaeology* 73:261.
7. S. Breiner. 1965. *Science* 150:185.
8. E. K. Ralph. 1965. *Archaeometry* 7:20.
9. F. Morrison, J. Benavente, C. W. Clewlow, Jr., and R. F. Heizer. 1970. *Science* 167:1488.
10. R. E. Linington. 1963. *American Scientist* 51:48.