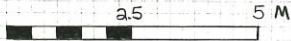


PART OF GRID #4 AT 1-METER INTERVALS



CONTOURS AT 10 M INTERVALS

EL ARENAL

..... = TEST PIT

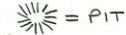
 = TREE

LAS CUEVAS GRID #6

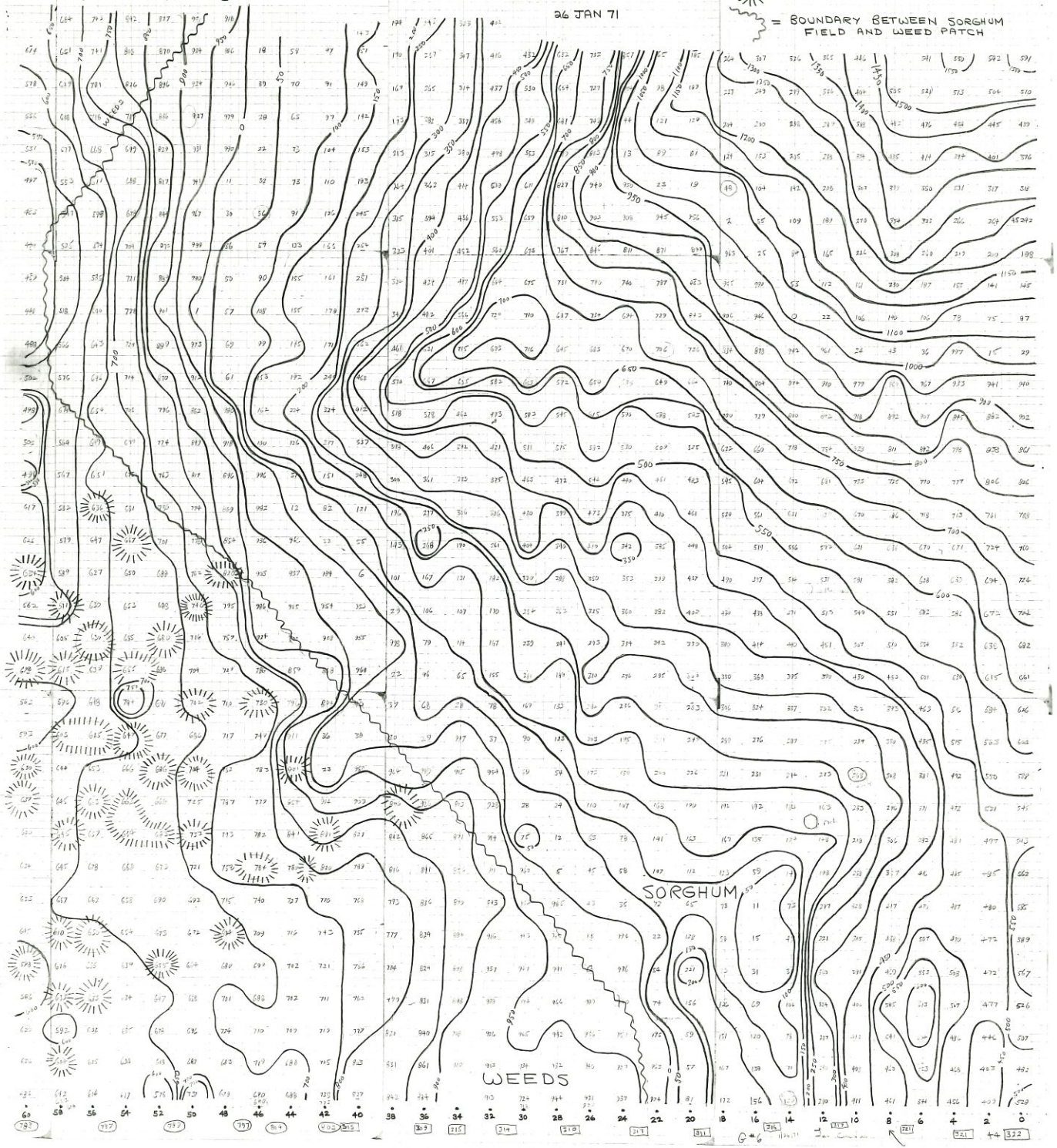


26 JAN 71

CONTOURS AT 50-Y INTERVALS

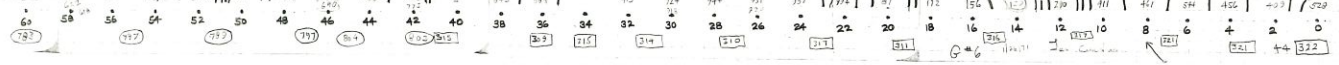


= PIT
= BOUNDARY BETWEEN SORGHUM
FIELD AND WEED PATCH



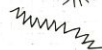
SORGHUM

WEEDS





=PIT



=TEPETATE SHELF

(PITS ARE ON HIGH SIDE OF A
STEP IN TEPETATE OF ABOUT 0.3M)

N (true)

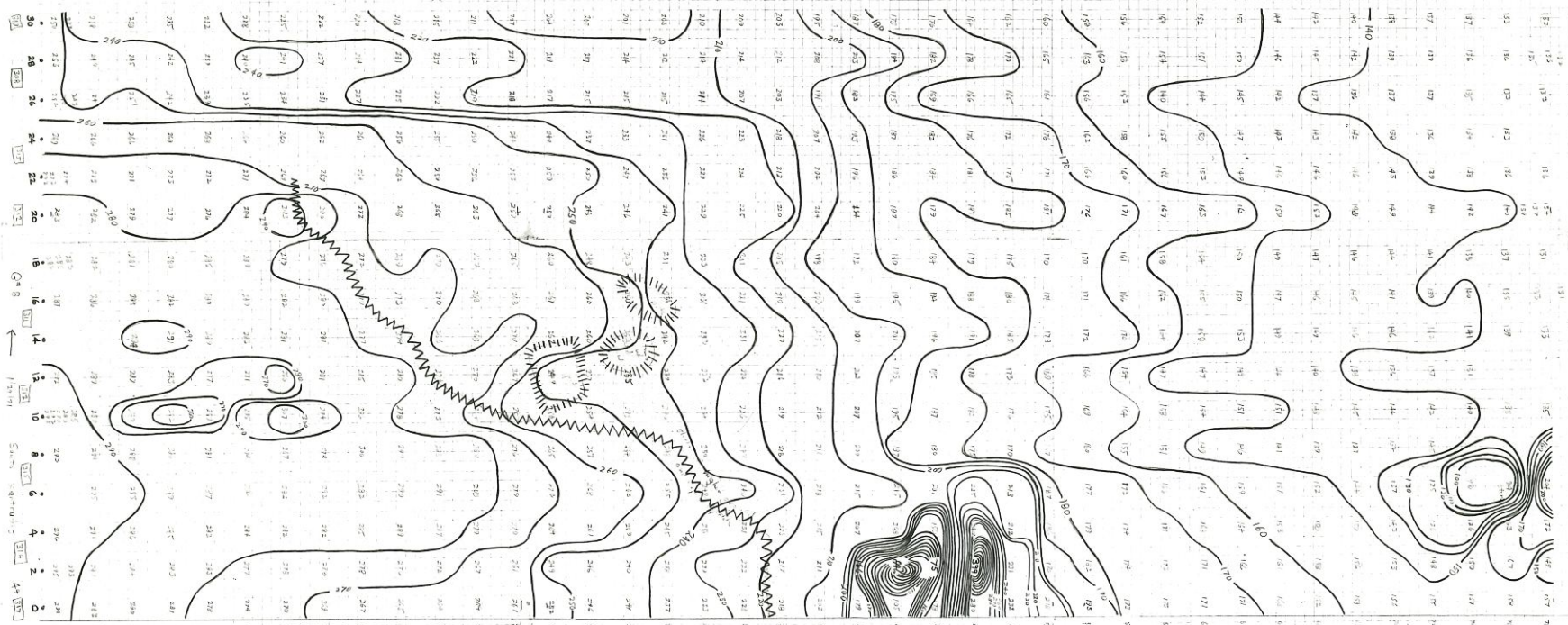
GRID #8 SANTA GERTRUDIS
(5.5 MILES WEST OF ETZATLÁN)

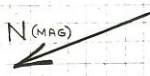
0 5 10 M

CONTOURS AT INTERVALS OF 10 GAMMAS

29 JAN 71

LINES WERE RUN WITHOUT CALIBRATED ROPE



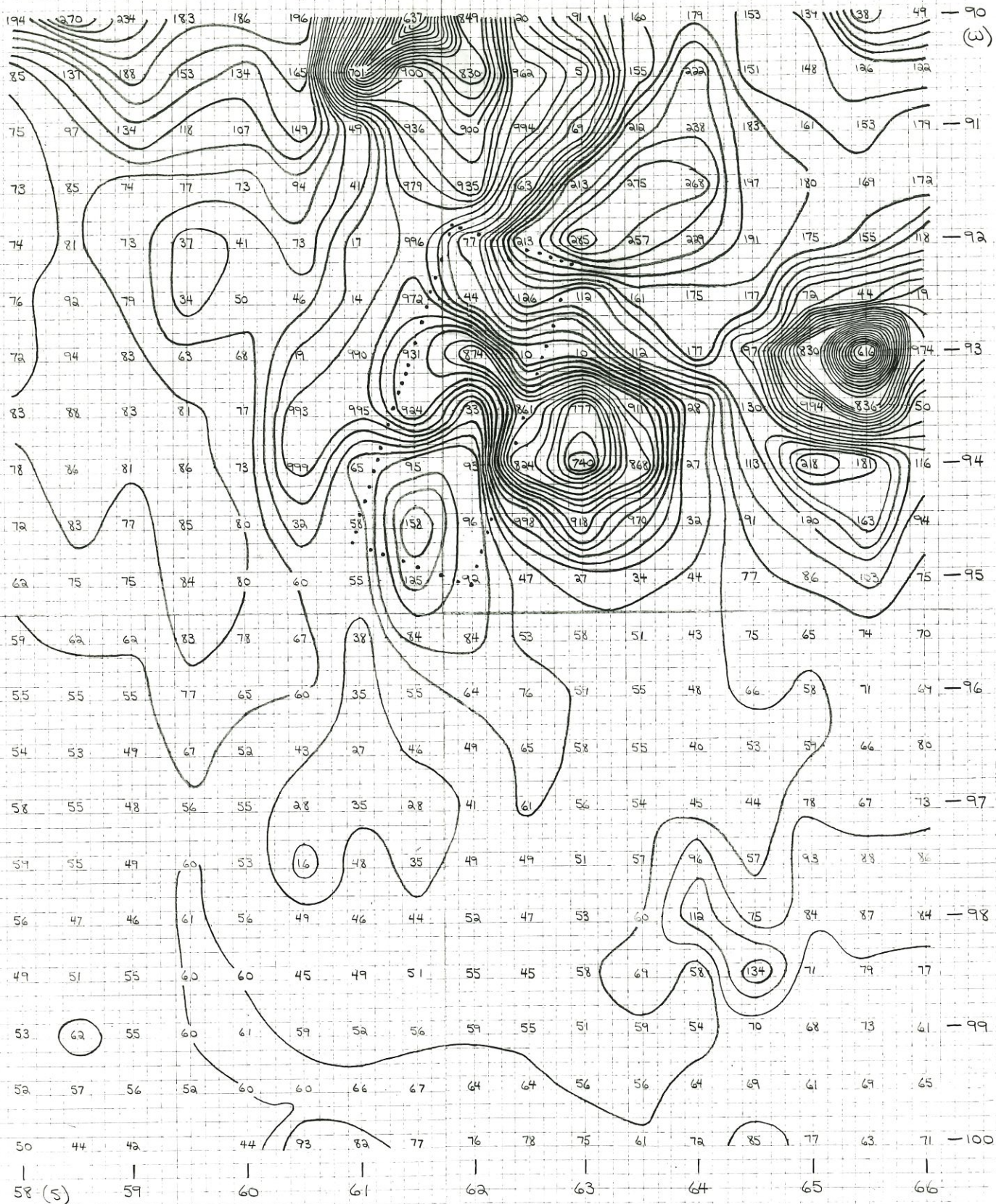


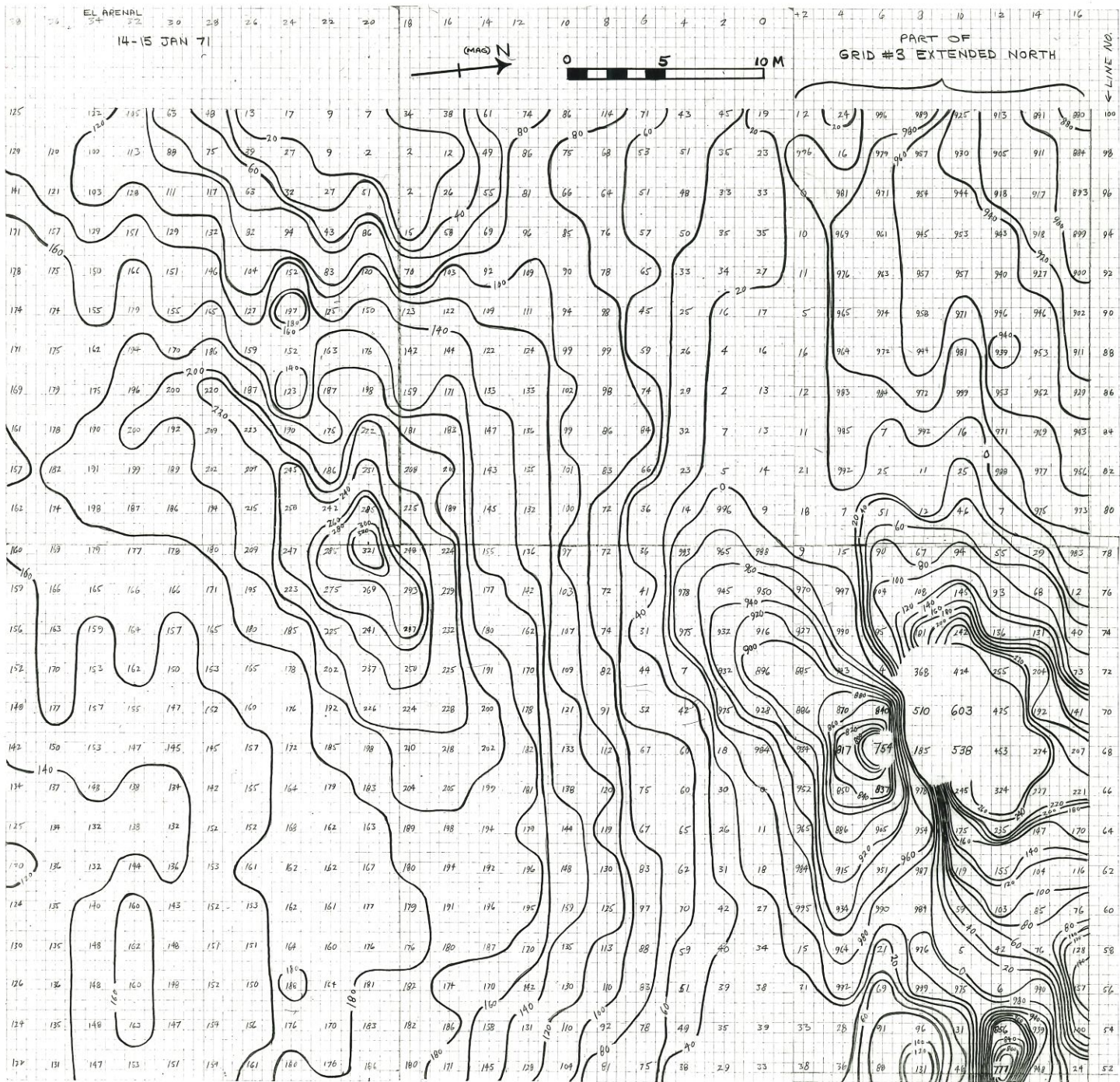
EL ARENAL
ETZATLAN, JALISCO, MEXICO

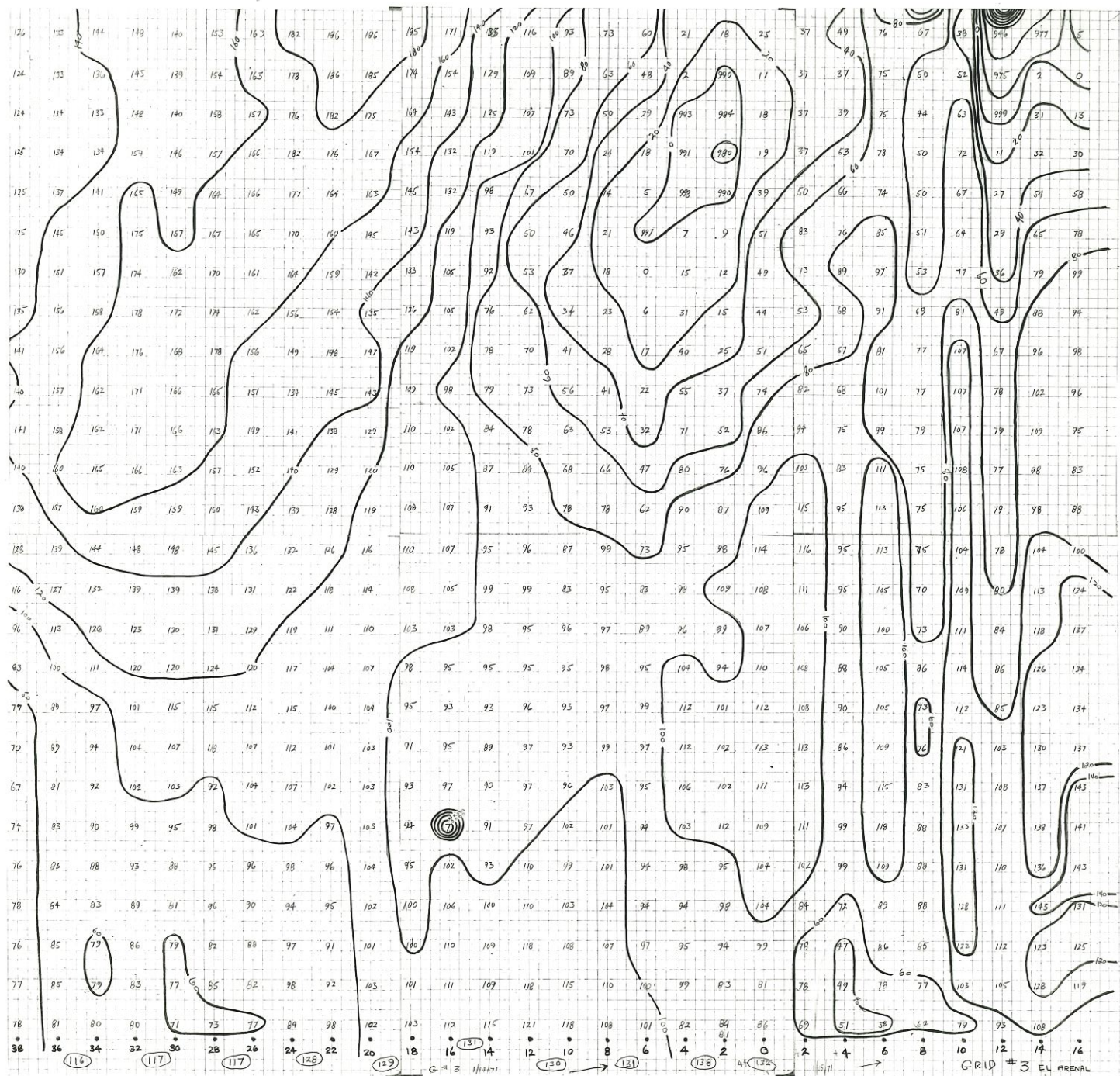


1/2 M RESOLUTION, GRID #1 SECTION, 1/2 M SENSOR HEIGHT

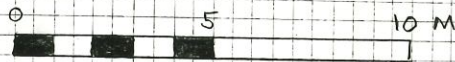
..... = TEST PIT





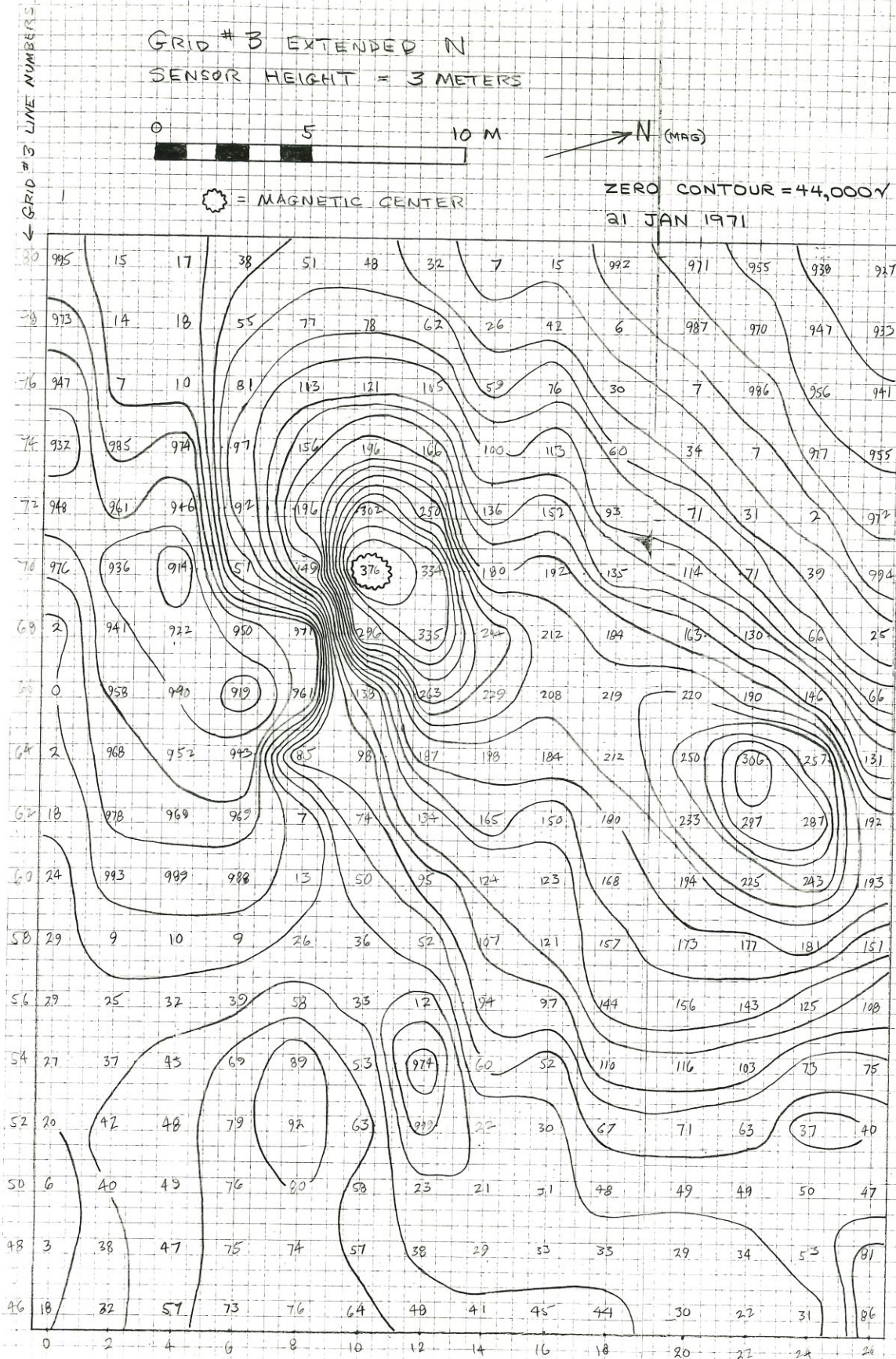


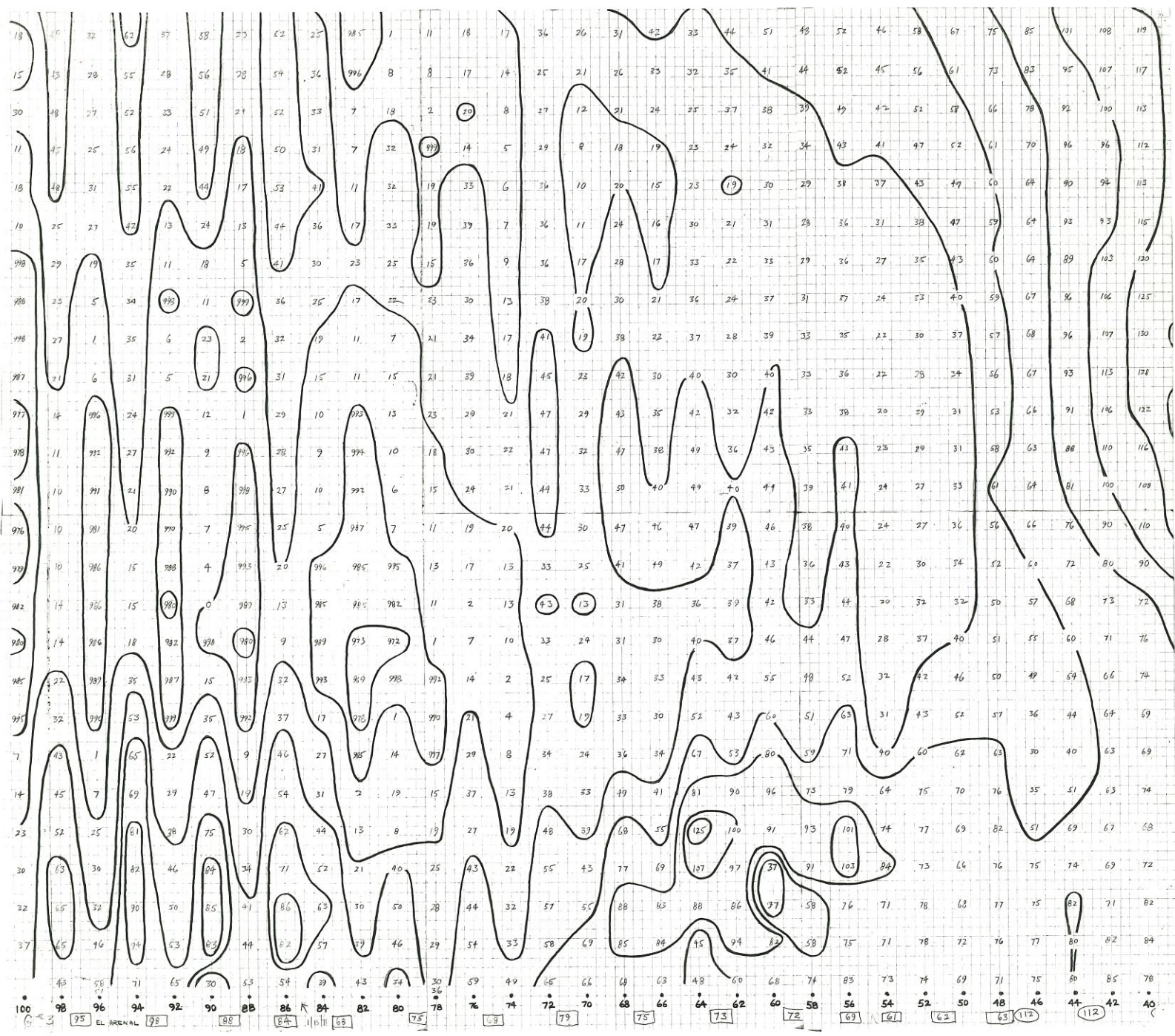
GRID # 3 EXTENDED N
 SENSOR HEIGHT = 3 METERS



☉ = MAGNETIC CENTER

ZERO CONTOUR = 44,000γ
 21 JAN 1971

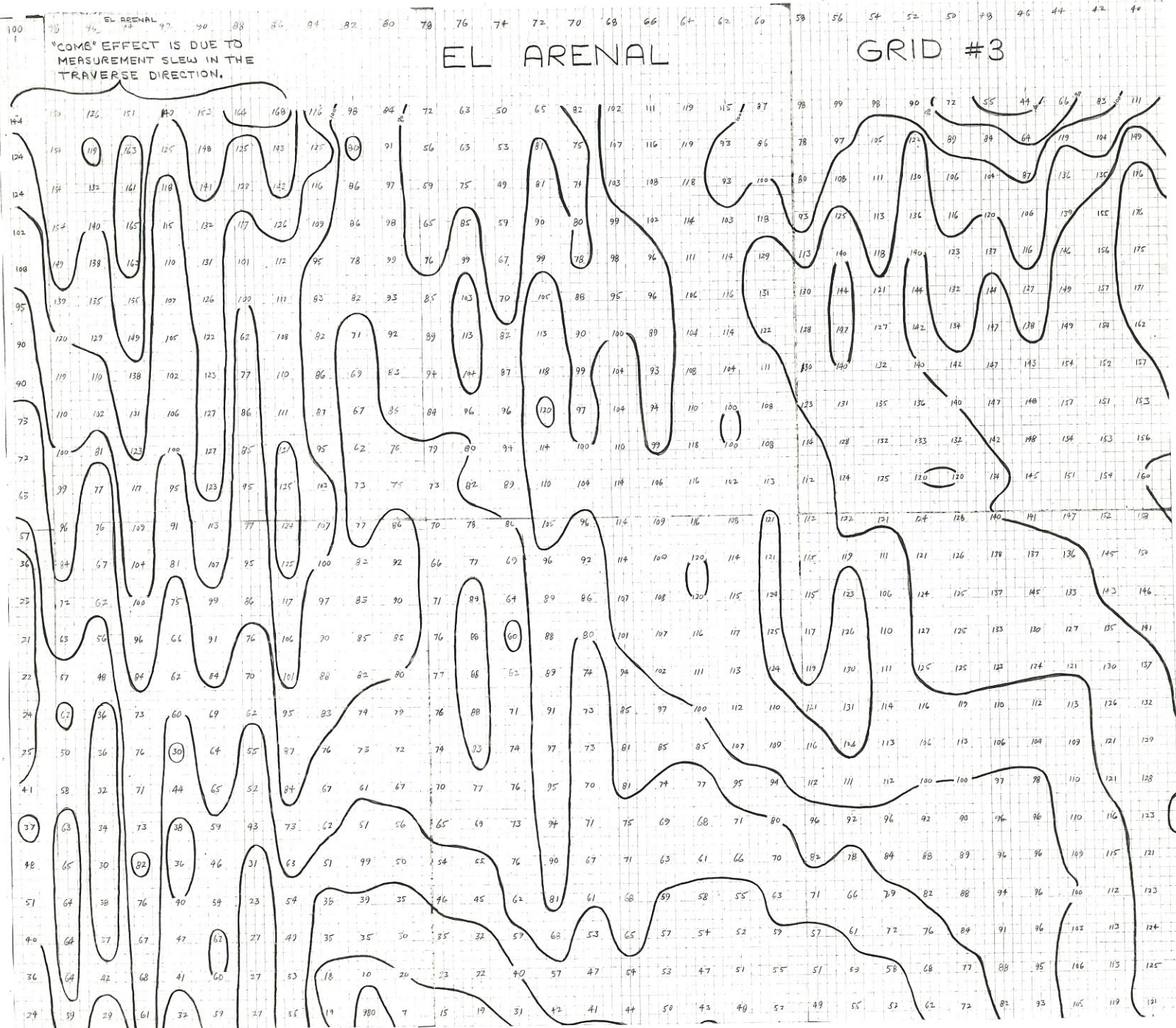


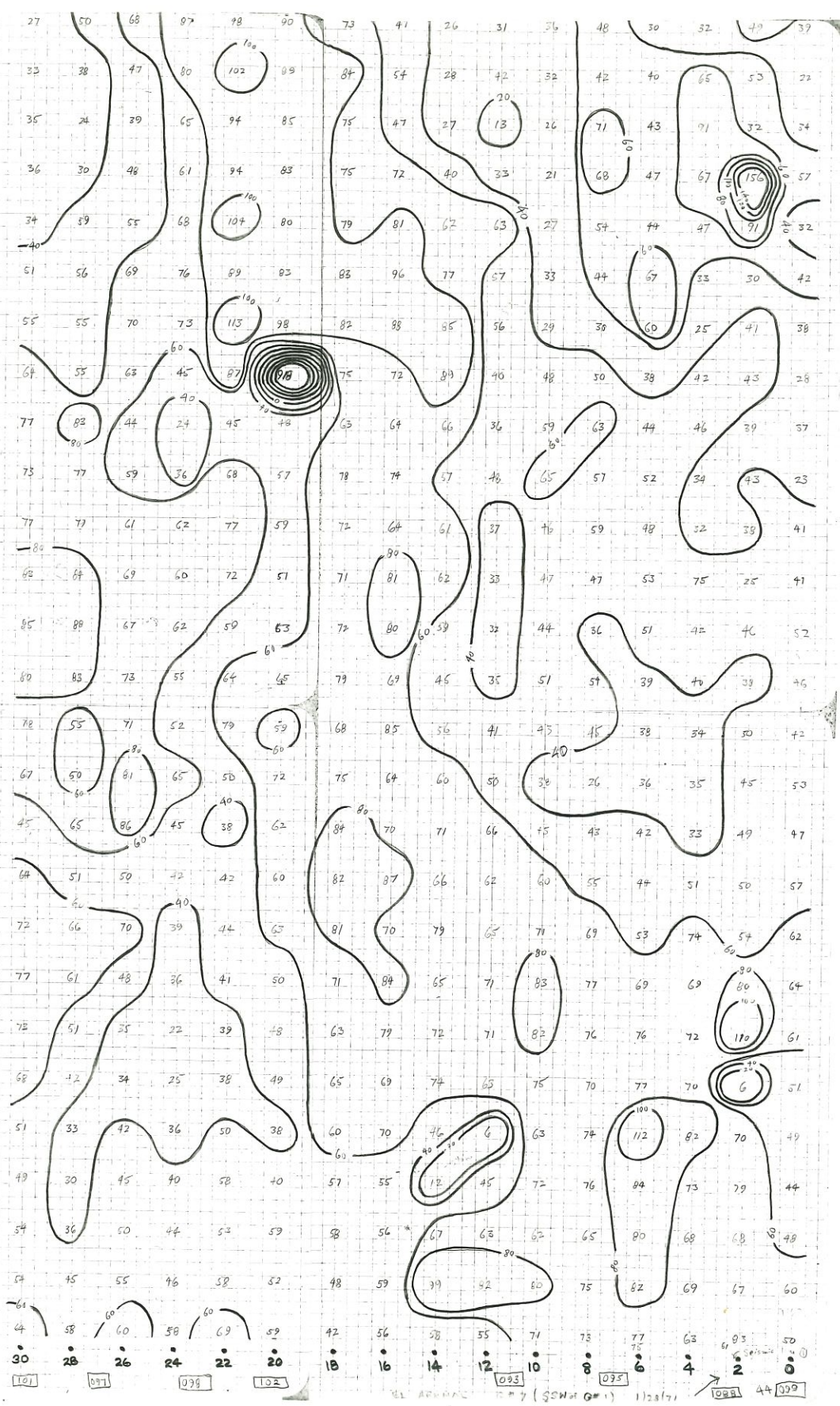


EL ARENAL
"COMB" EFFECT IS DUE TO MEASUREMENT SLEW IN THE TRAVERSE DIRECTION.

EL ARENAL

GRID #3





41 100 102 104 106 108 110 112 114 116 118 120 122 124 126 128 130 132 134 136 138 140 142 144 146 148 150 152 154 156 158 160 162 164 166 168 170 172 174 176 178 180 182 184 186 188 190 192 194 196 198 200

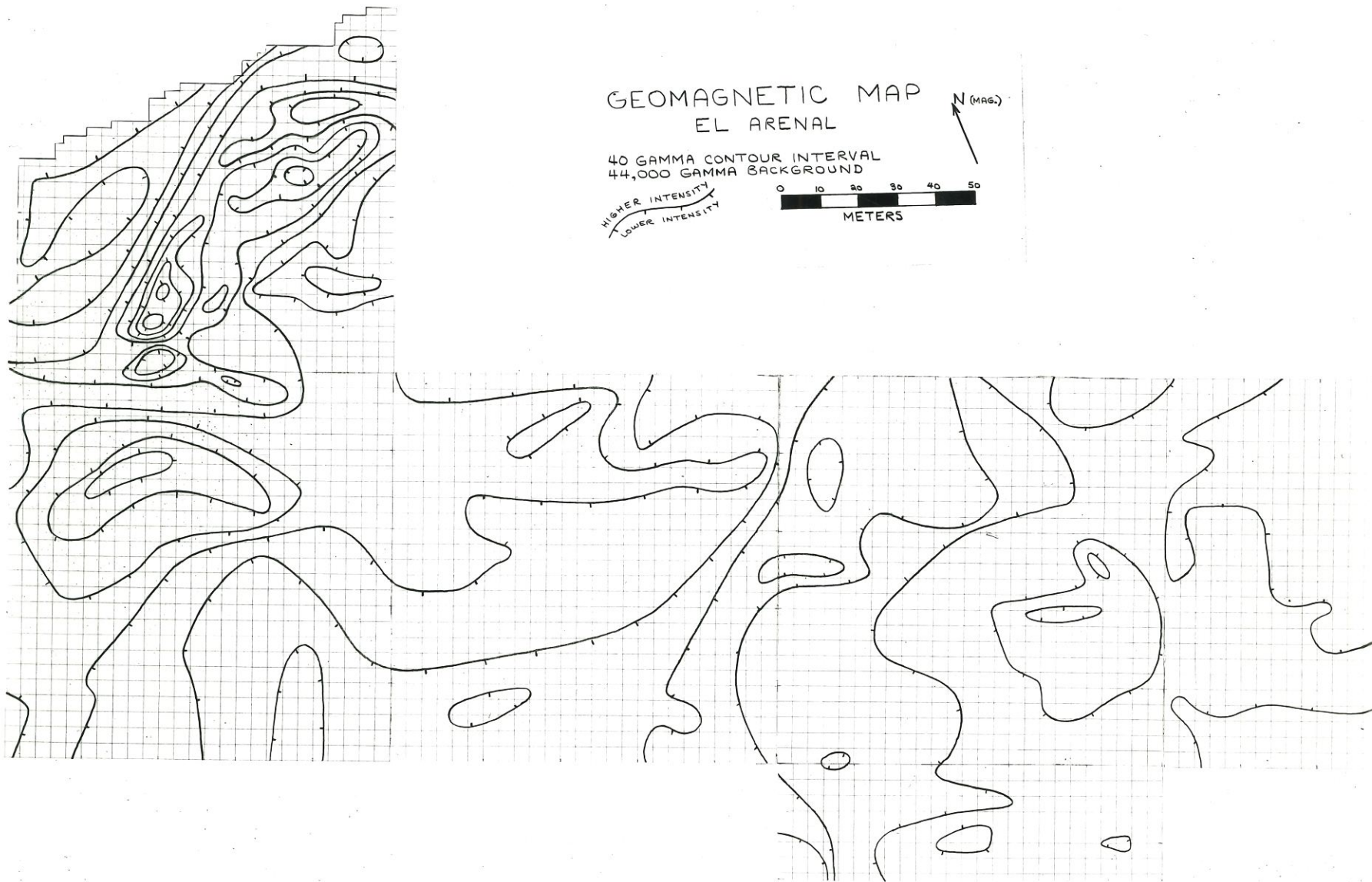
GEOMAGNETIC MAP
EL ARENAL

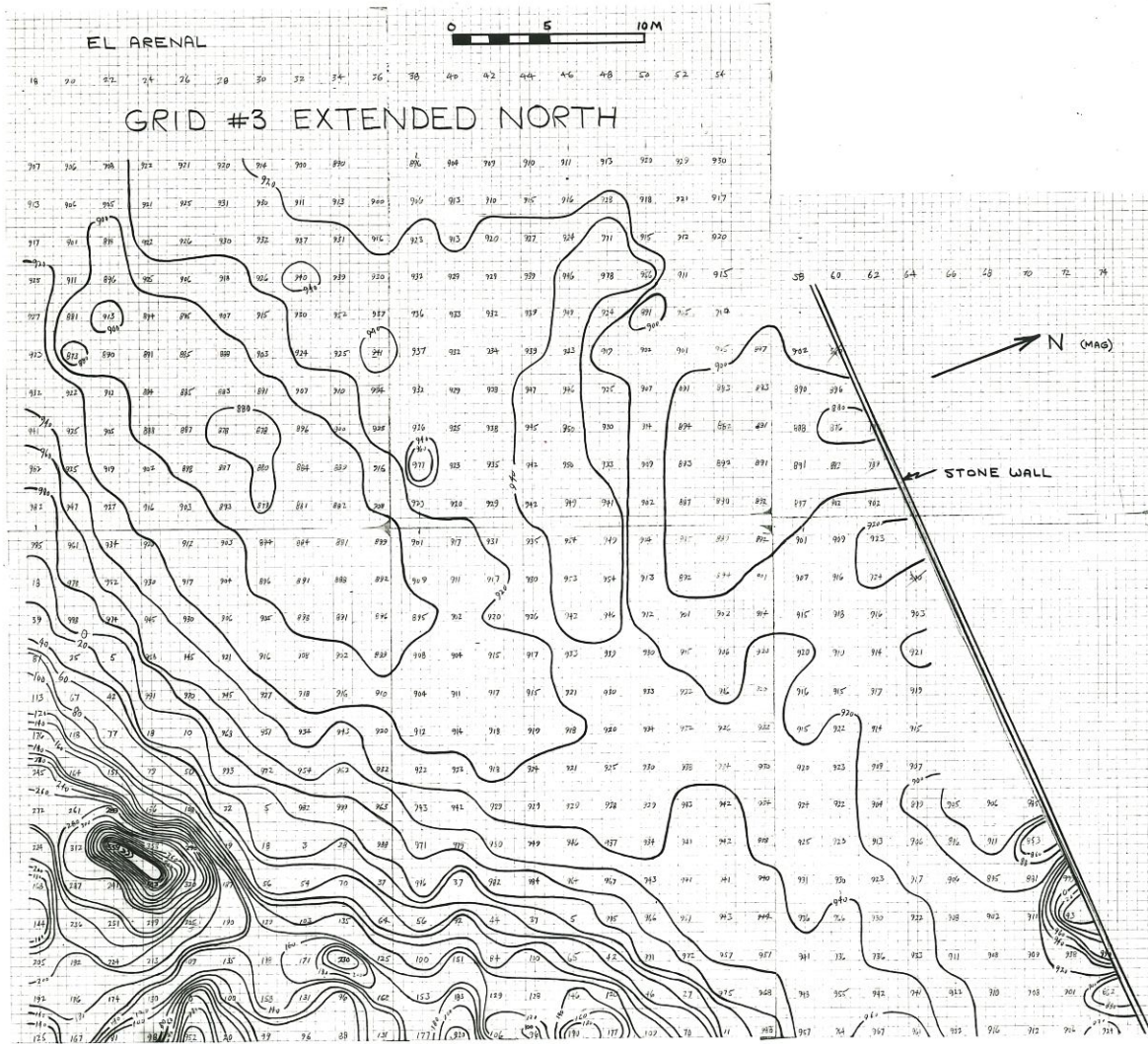
40 GAMMA CONTOUR INTERVAL
44,000 GAMMA BACKGROUND

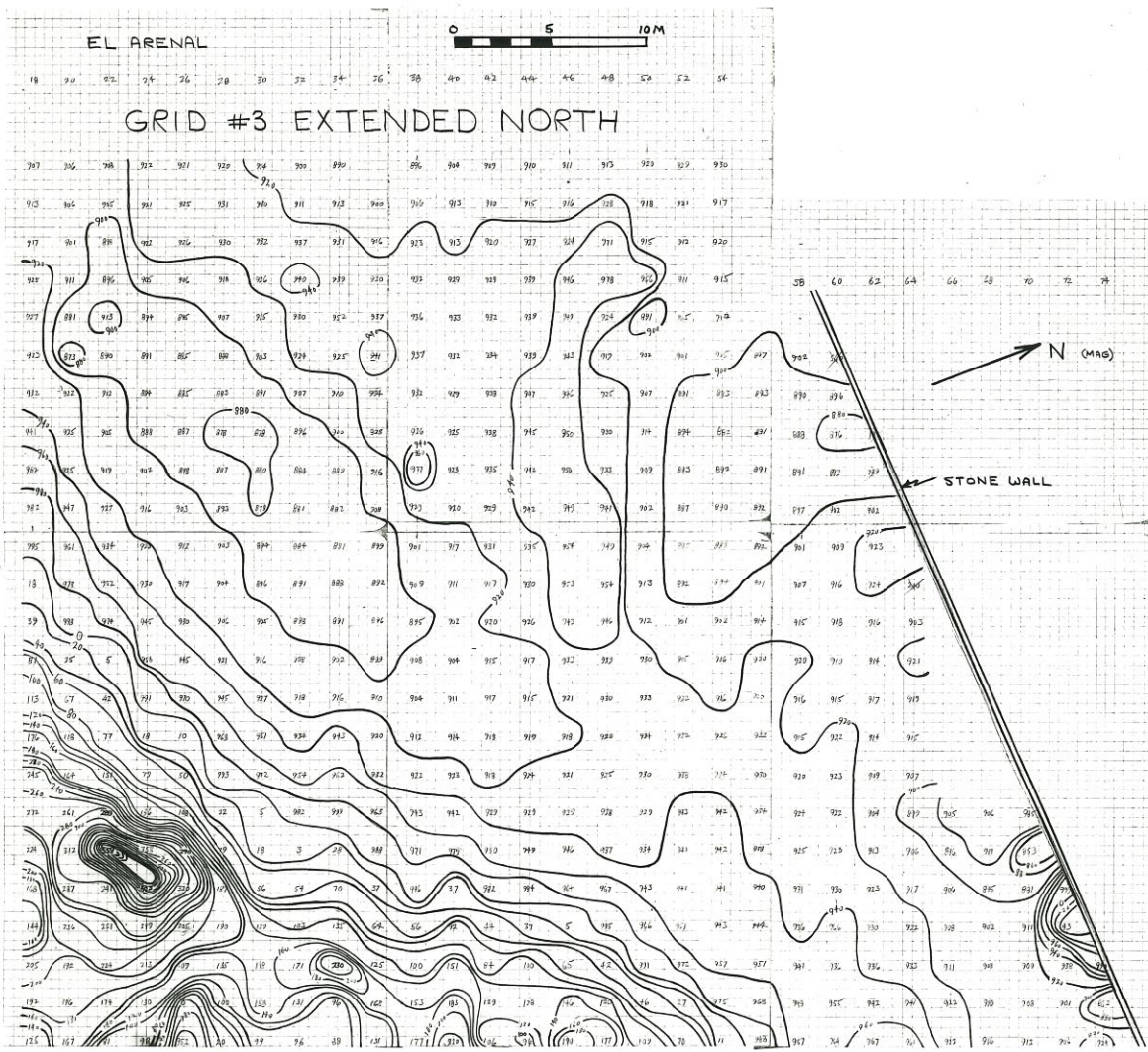
HIGHER INTENSITY
LOWER INTENSITY

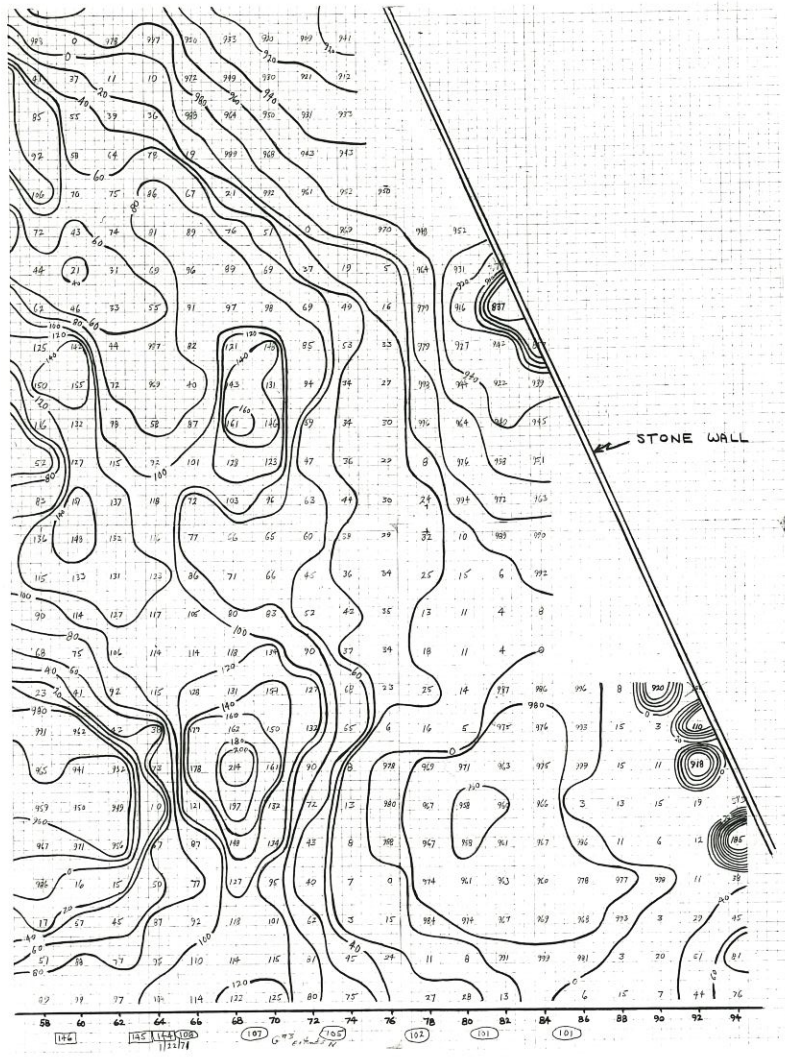


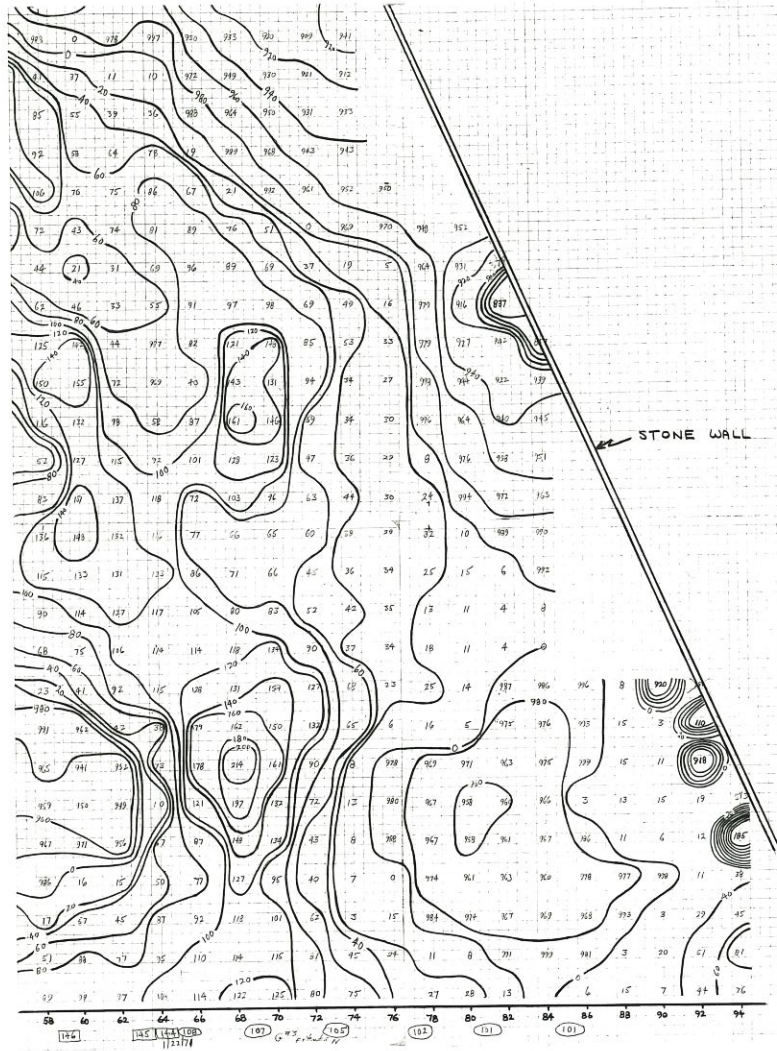
N (MAG.)

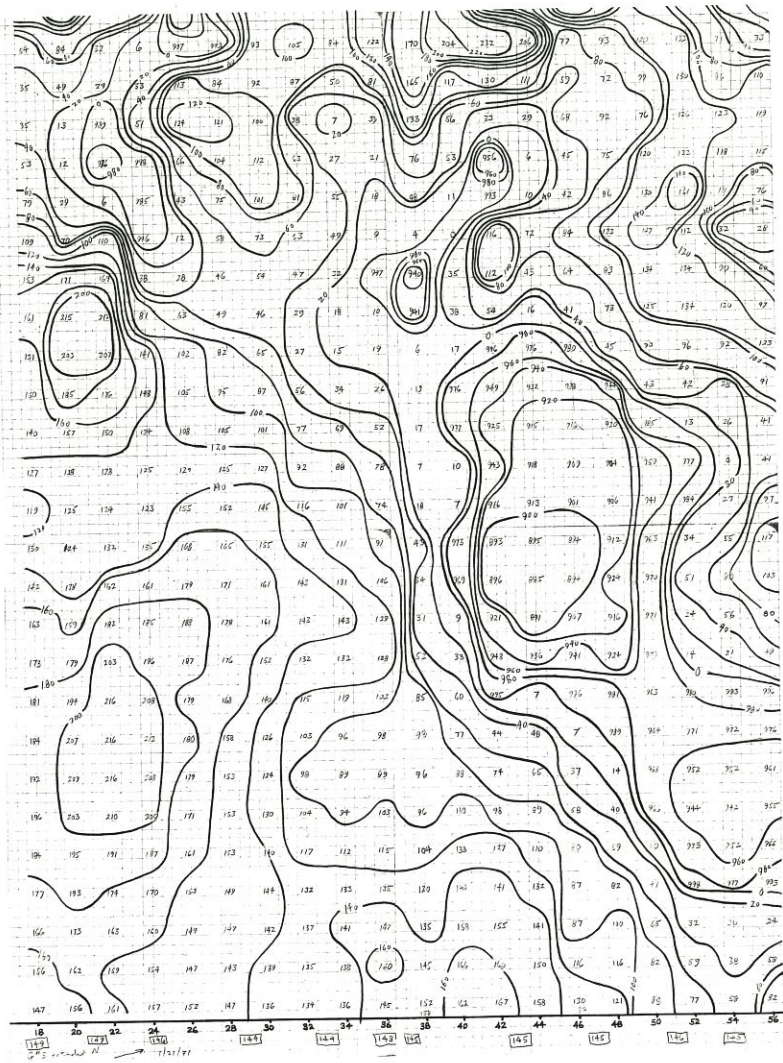












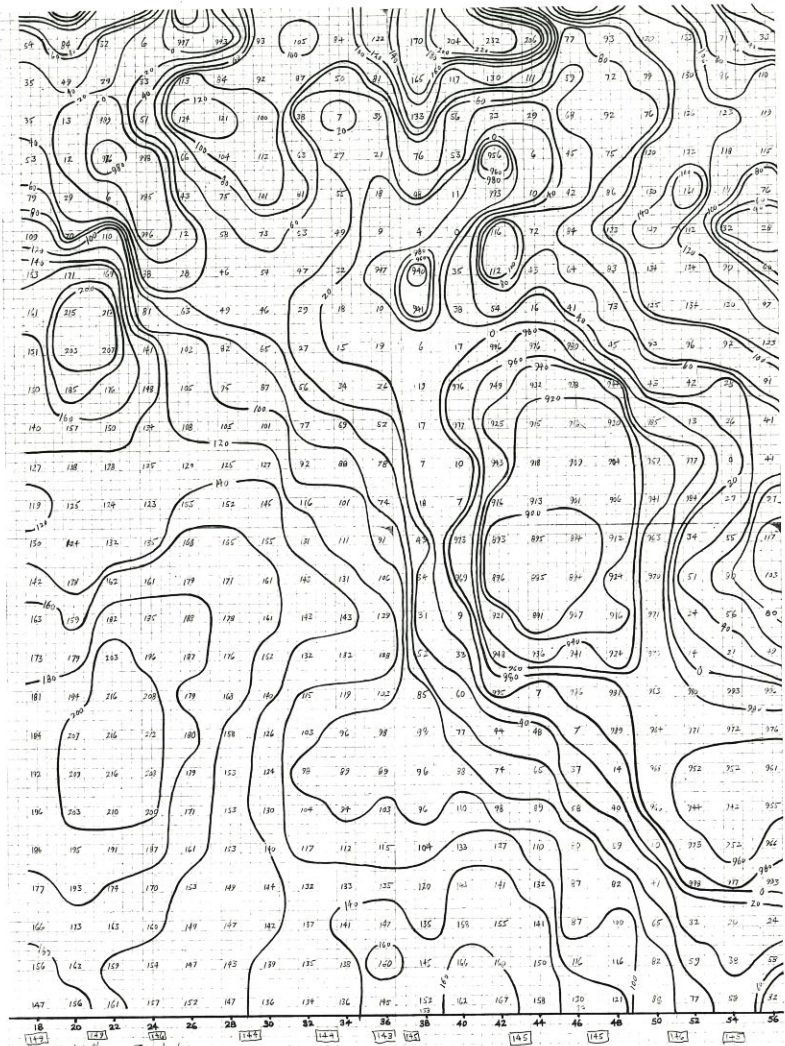




Fig. 18



FIG. 336

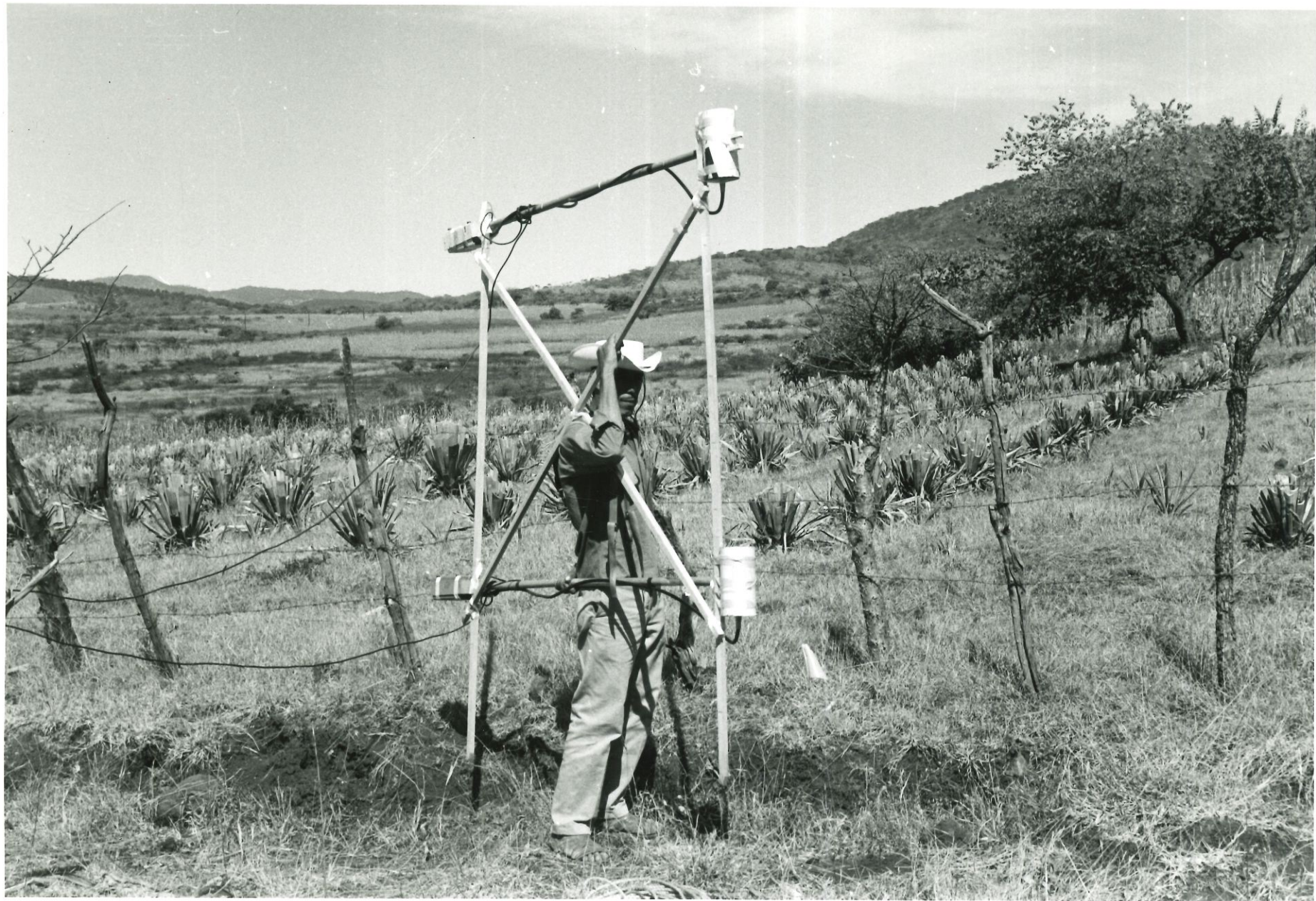


Fig. 33 A



Fig. 29



Fig. 29



Fig. 30



Fig. 30



0 1 2 3 4 5



CENTIMETERS

TEPETATE

FROM EL ARENAL, MAGDALENA BASIN
JALISCO, MEXICO

Fig. 41



0 1 2 3 4 5



CENTIMETERS

TEPETATE

FROM EL ARENAL, MAGDALENA BASIN
JALISCO, MEXICO