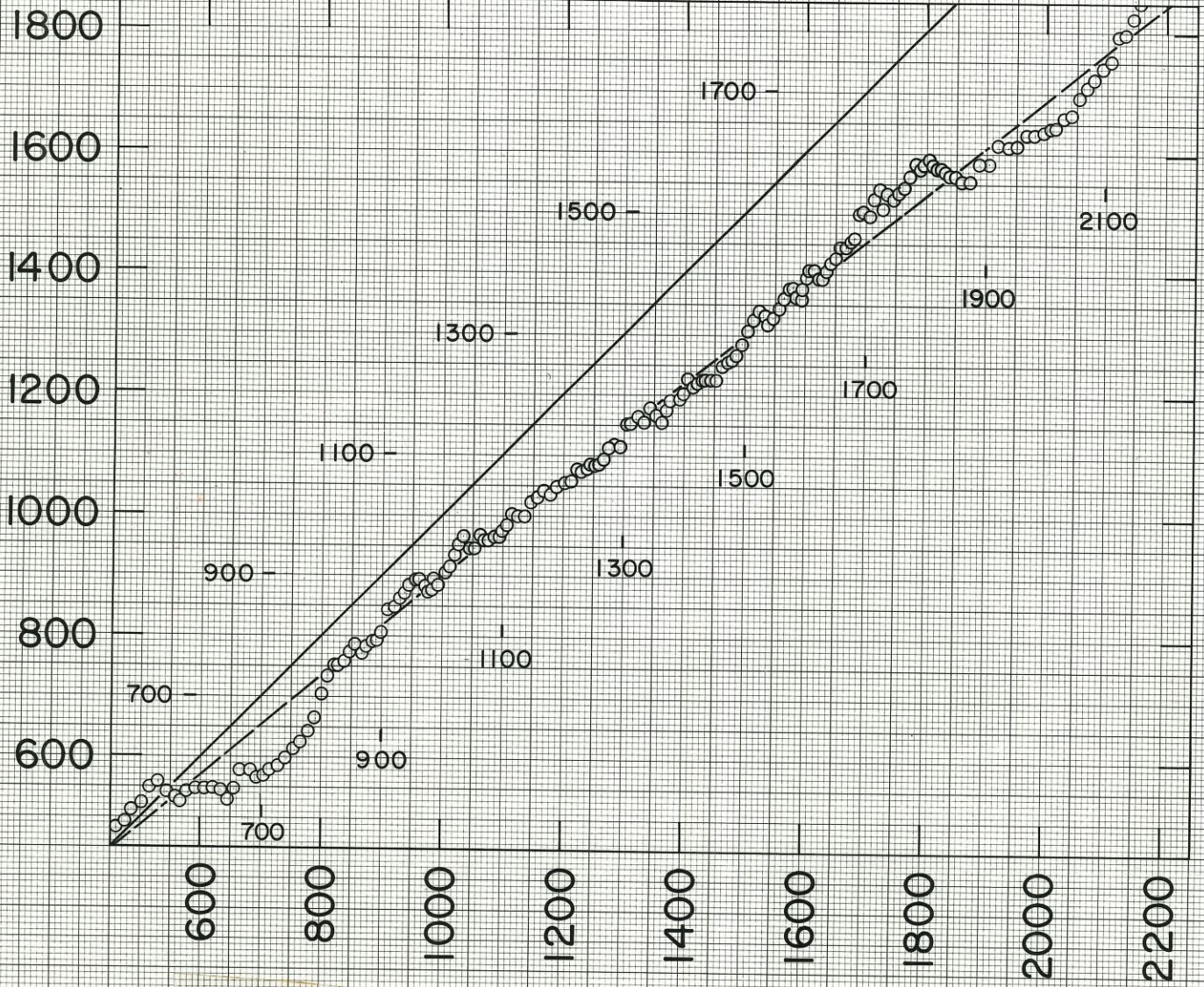


MASCA Newsletter 9(1) 1973

Fig 4

C<sup>14</sup> DATES

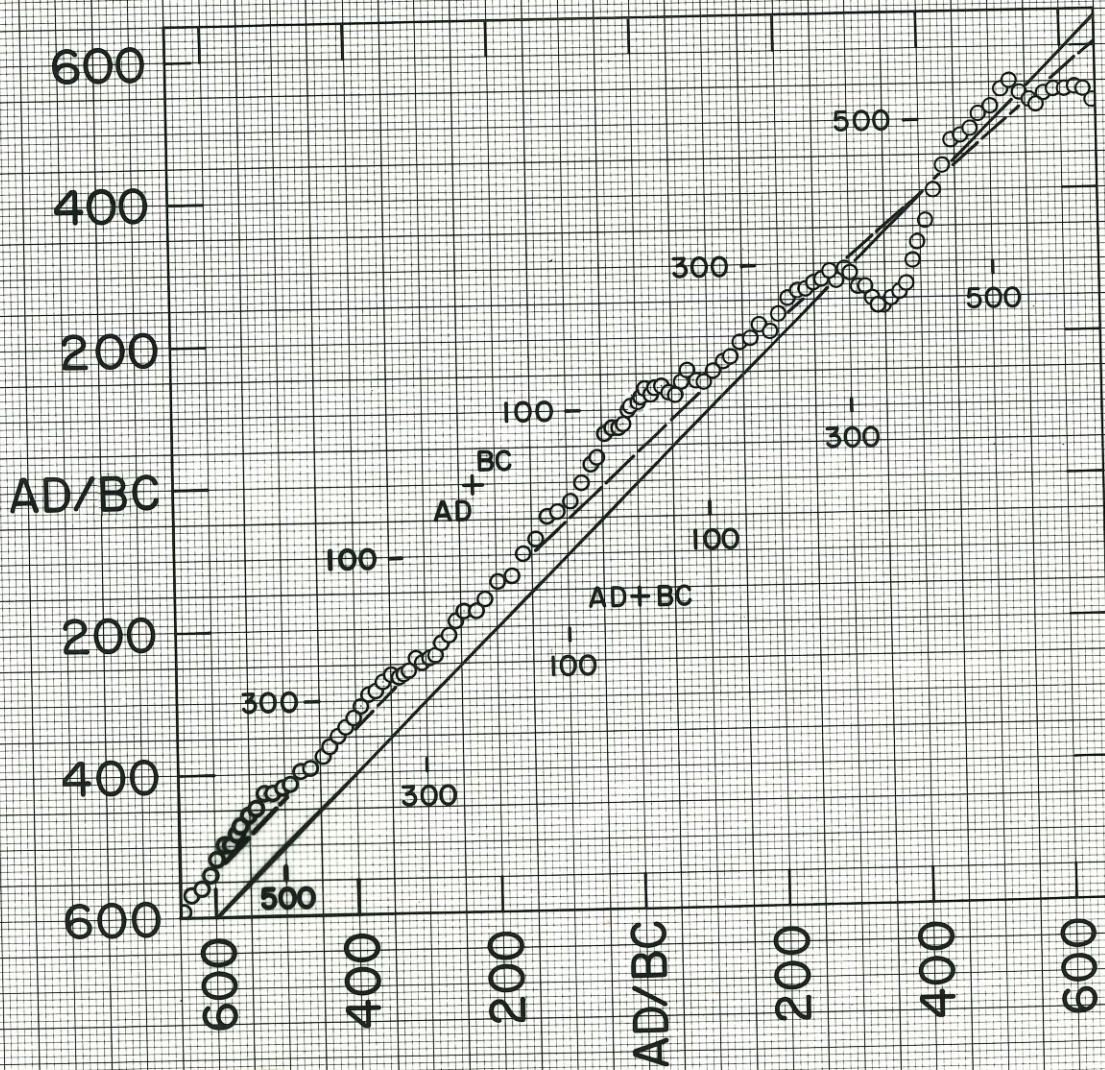


DENDRO - DATES

MASCA Newsletter 9(1) 1973

Fig 3

C<sup>14</sup> DATES



DENDRO-DATES

MASCA Newsletter 9(1) 1973

Fig 2.

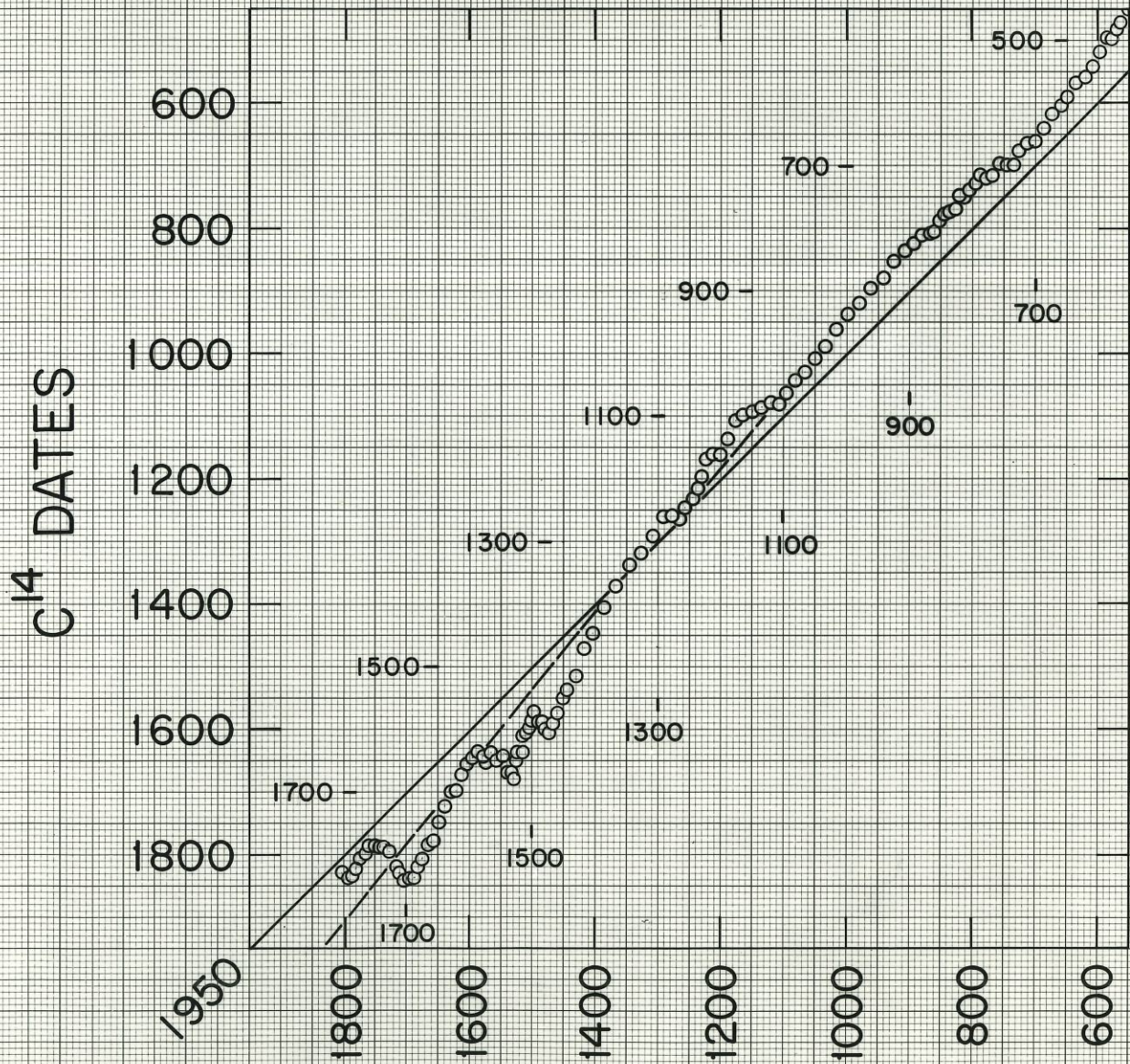


Fig. 1. DENDRO-DATES

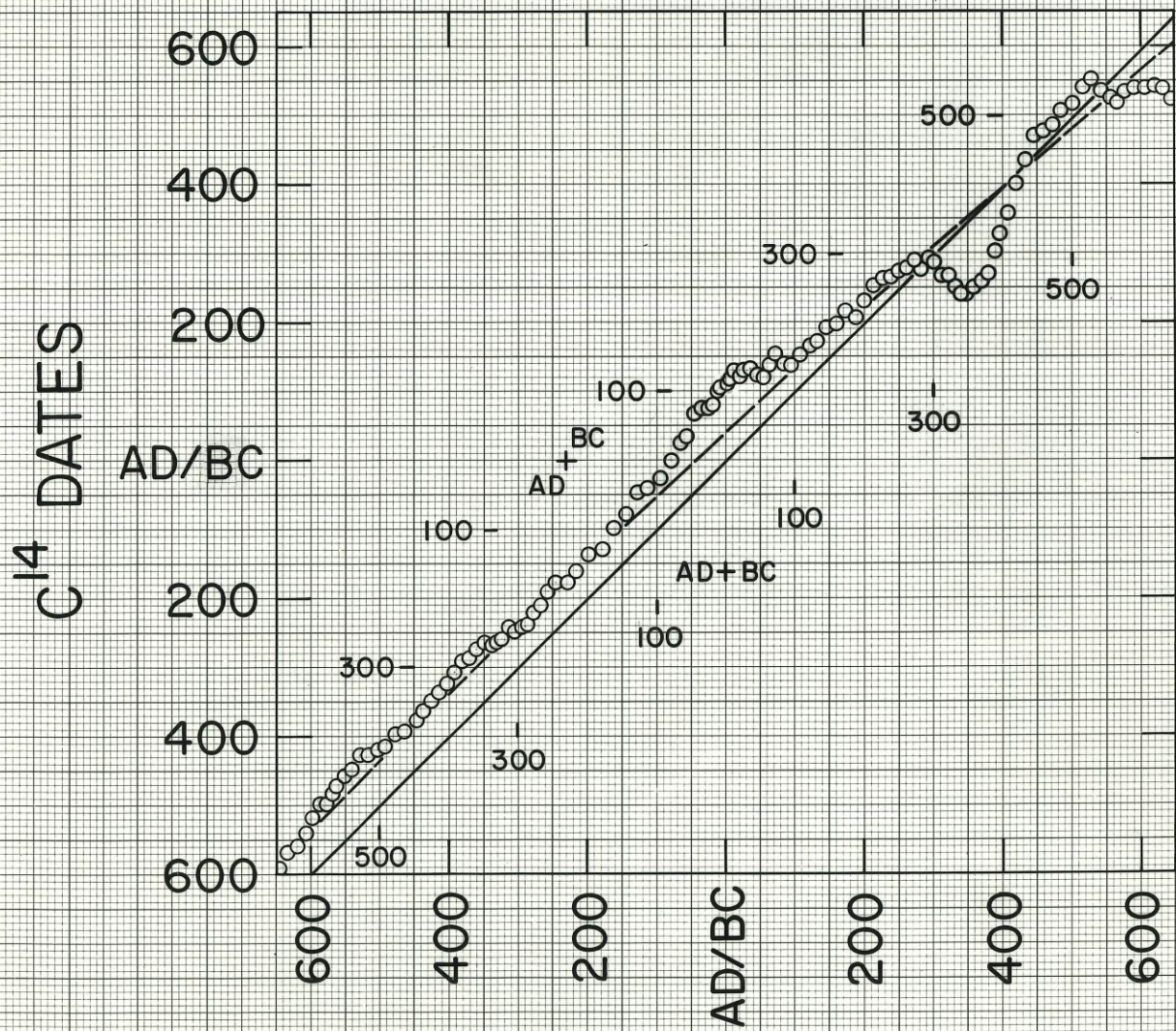


Fig. 2. DENDRO - DATES

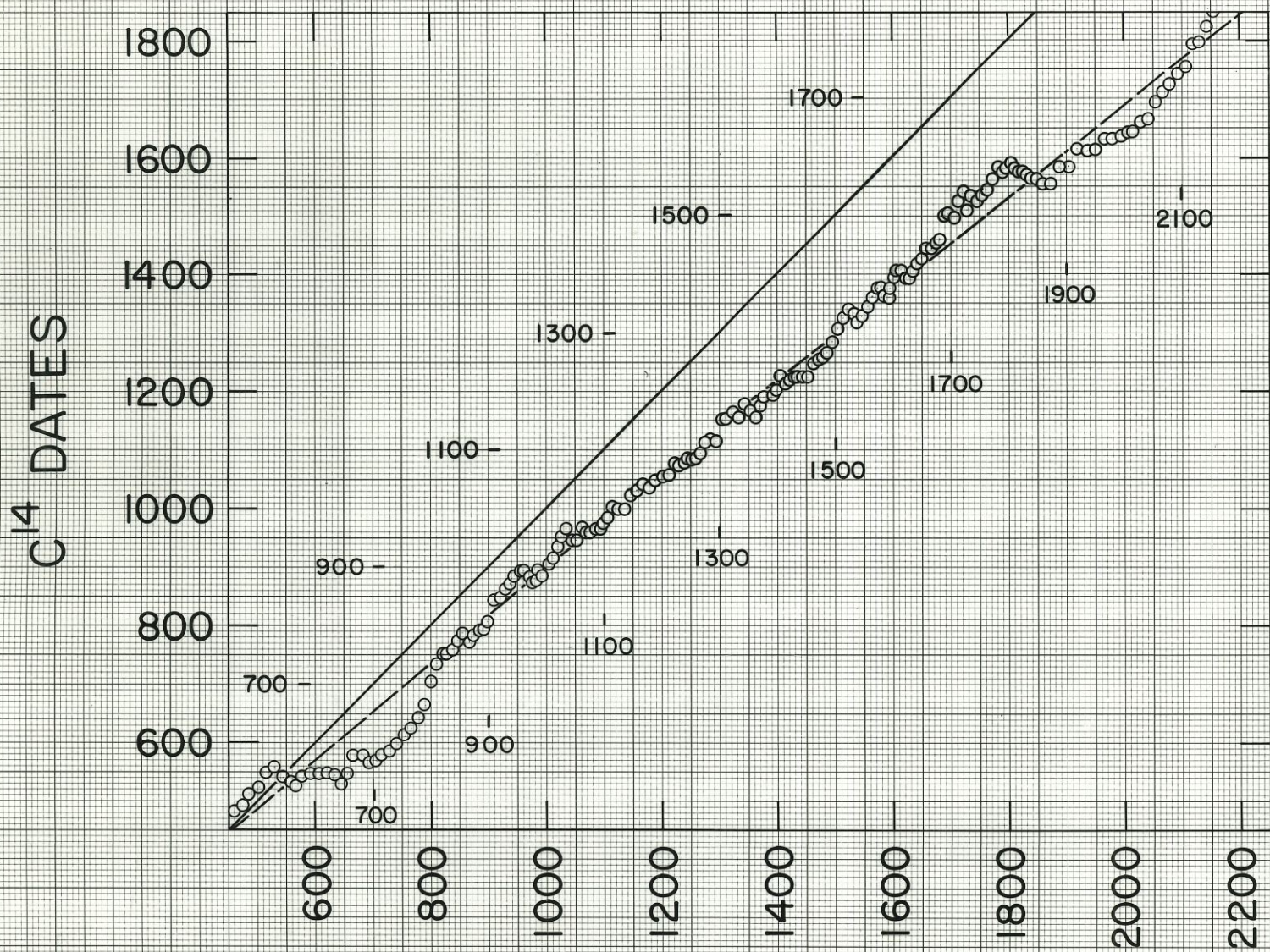


Fig 3. DENDRO-DATES

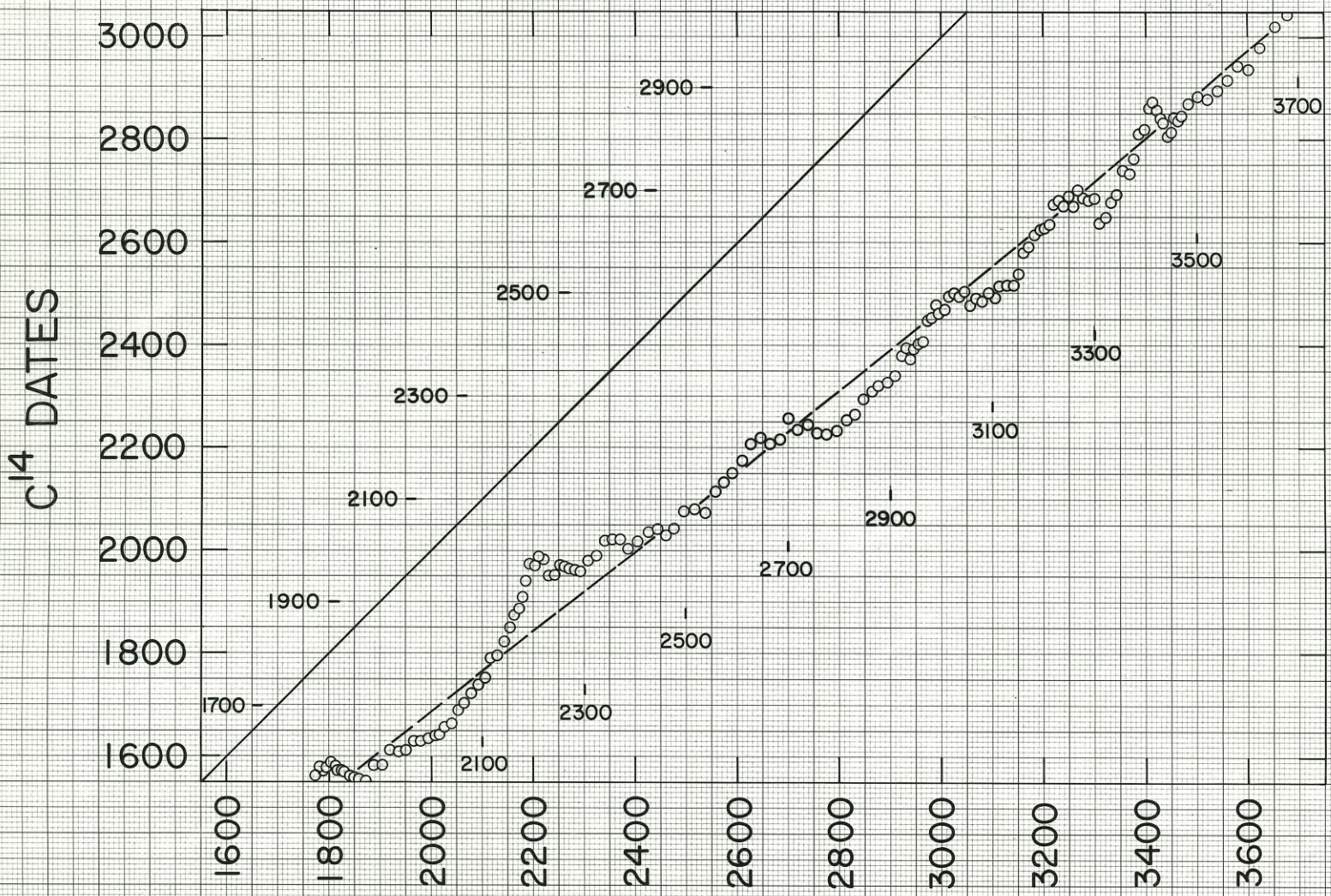


Fig. 4. DENDRO-DATES

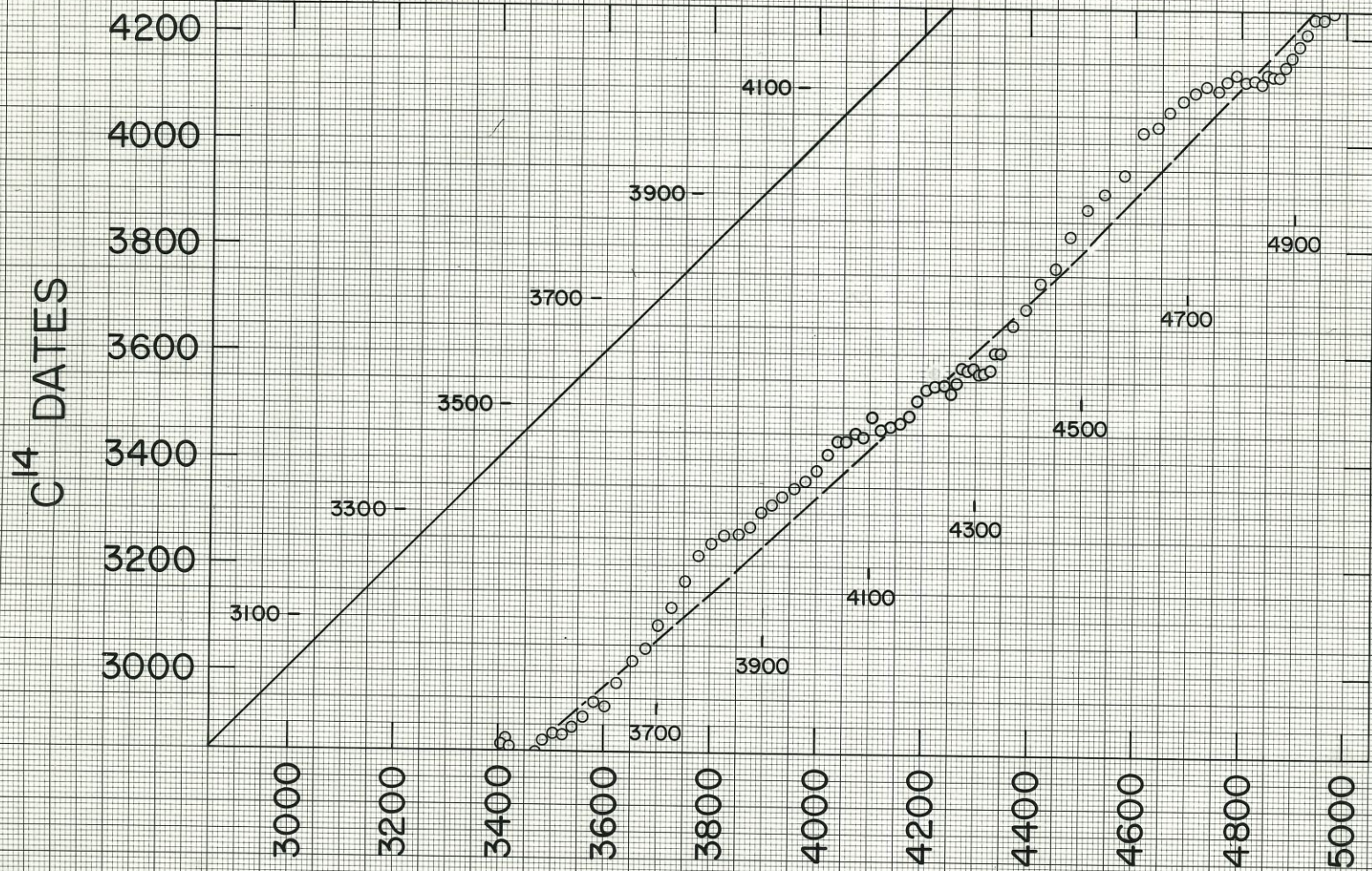


Fig. 5. DENDRO-DATES

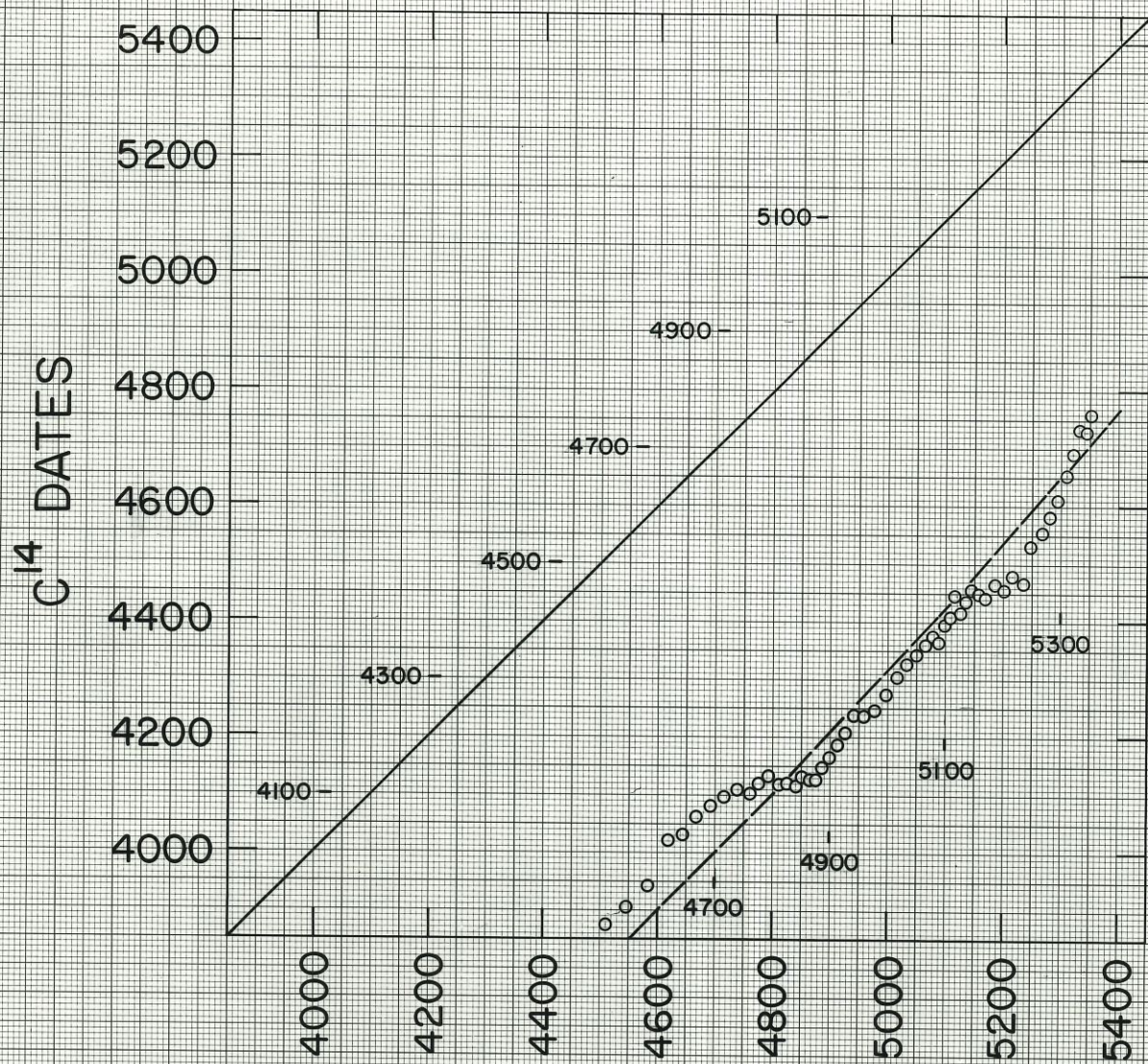
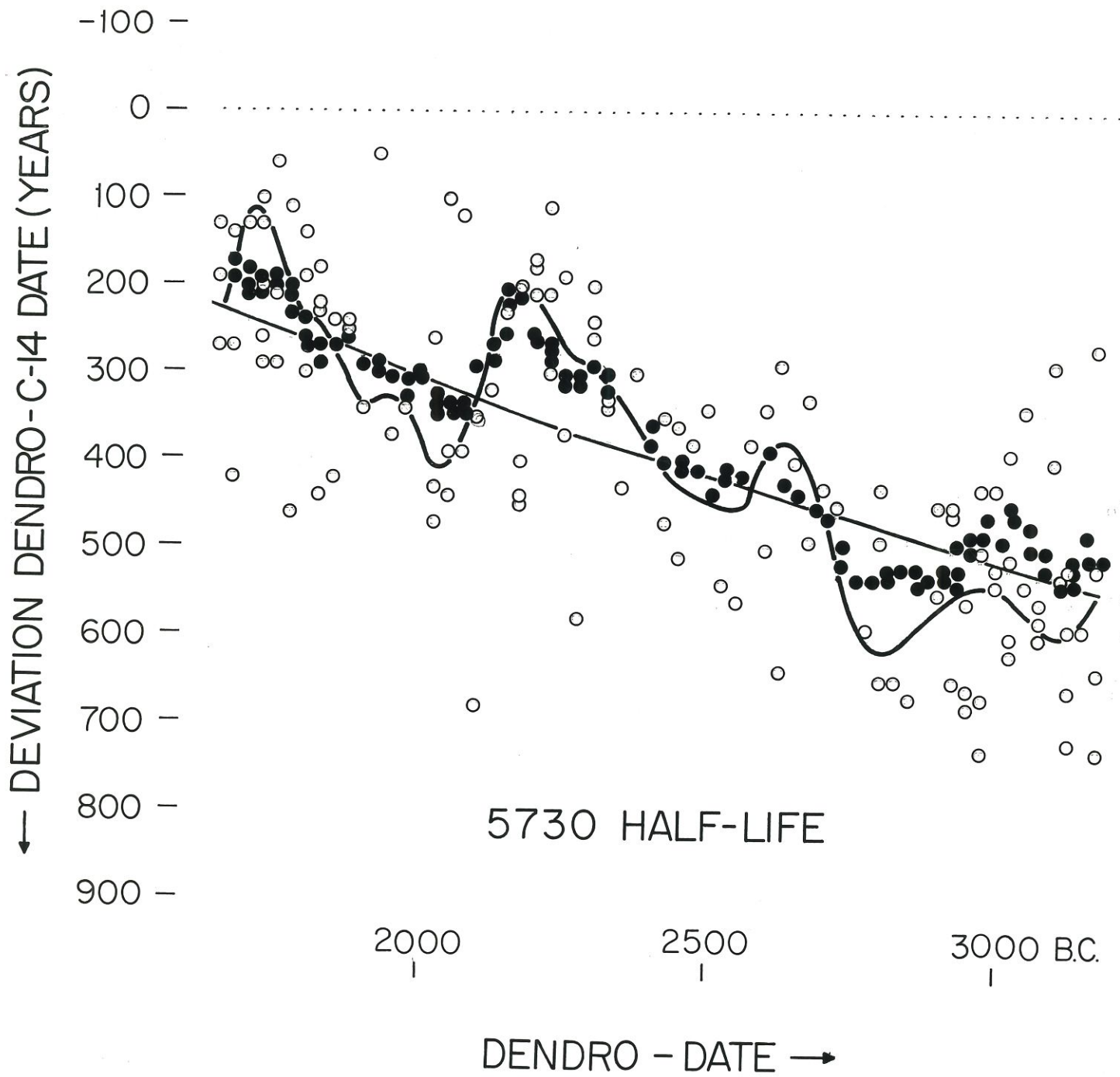
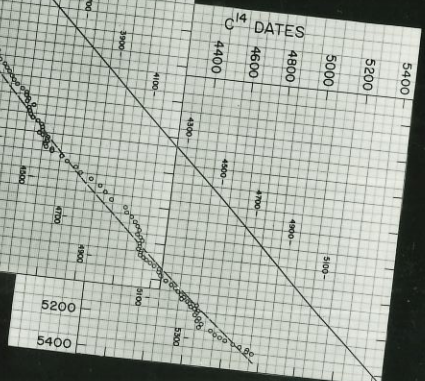
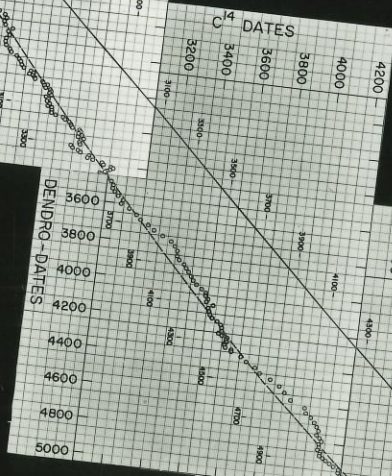
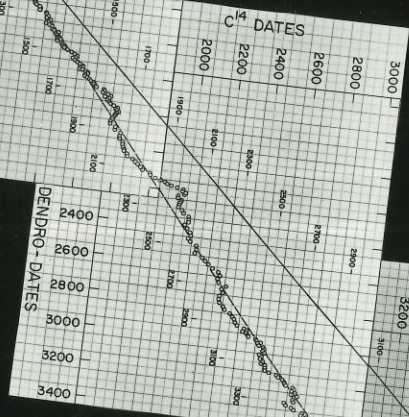
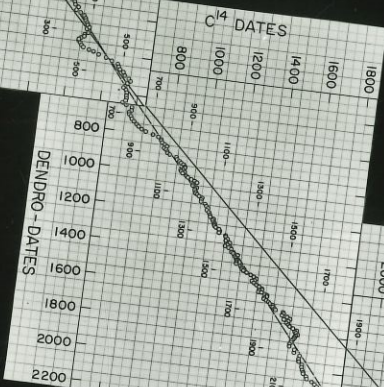
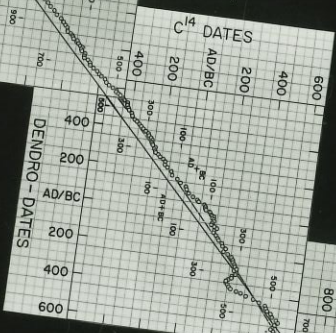
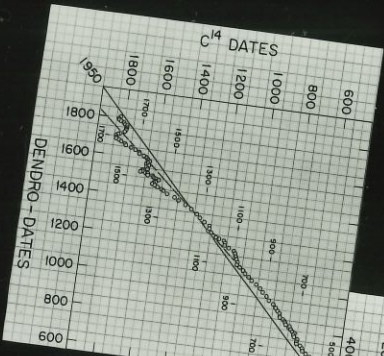
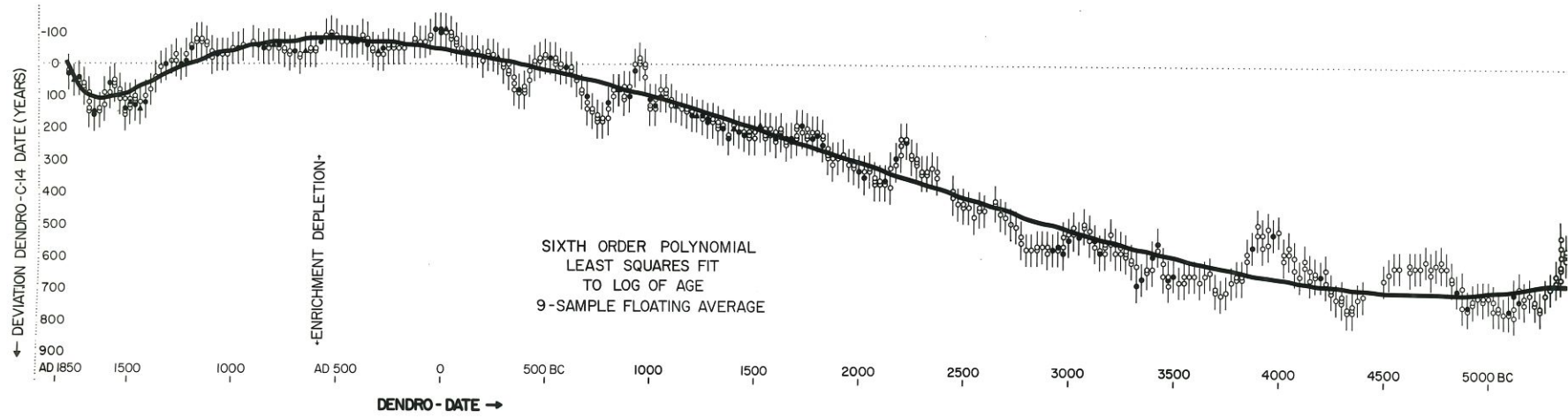
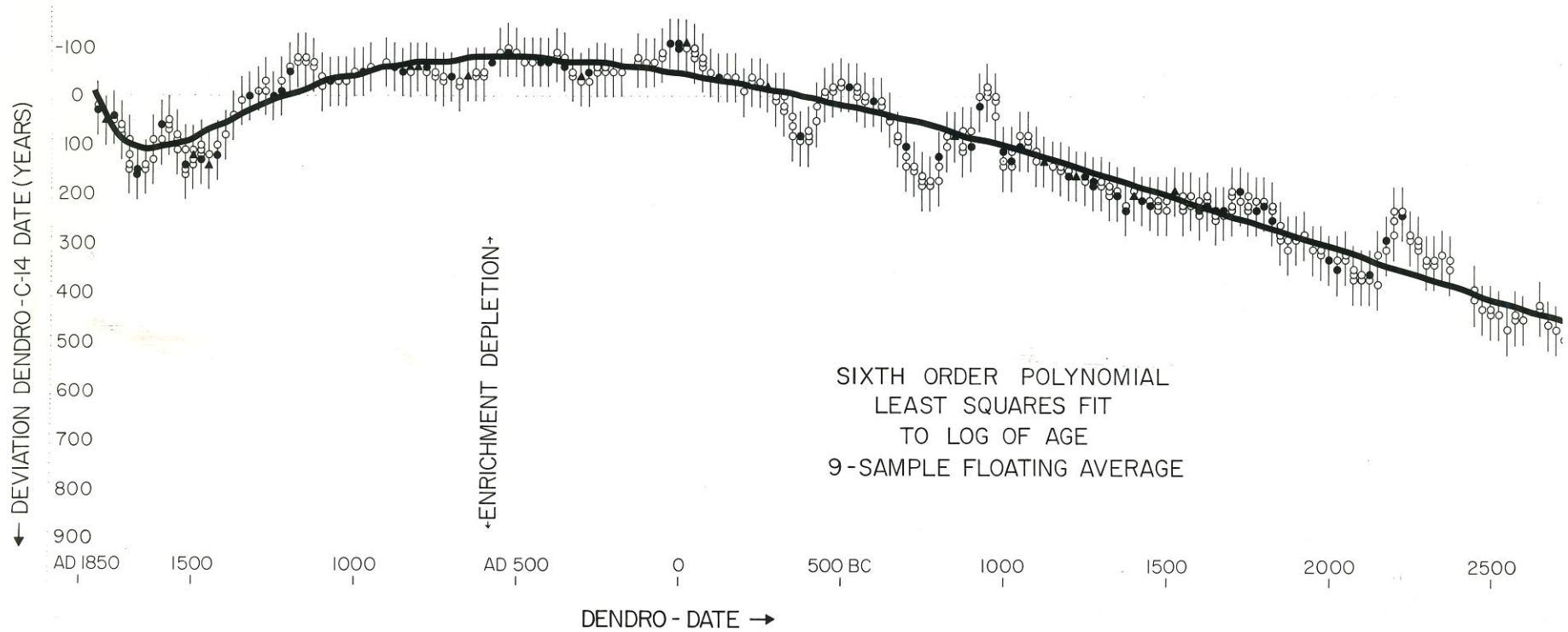


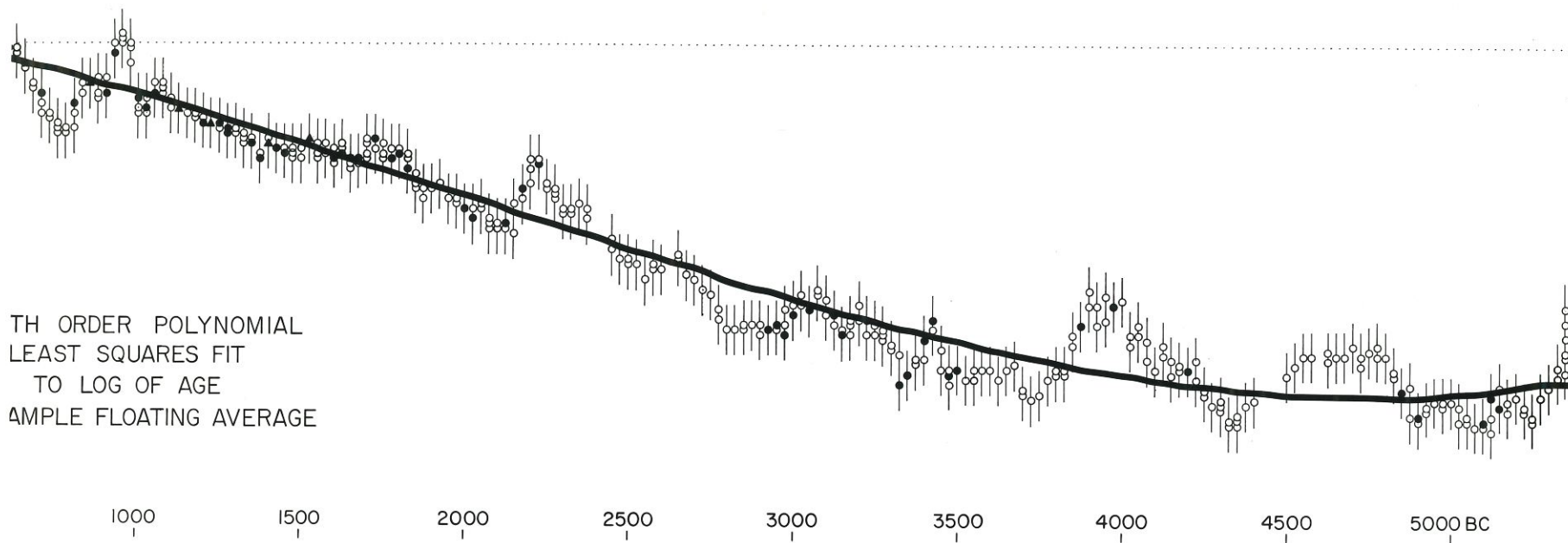
Fig. 6. DENDRO-DATES



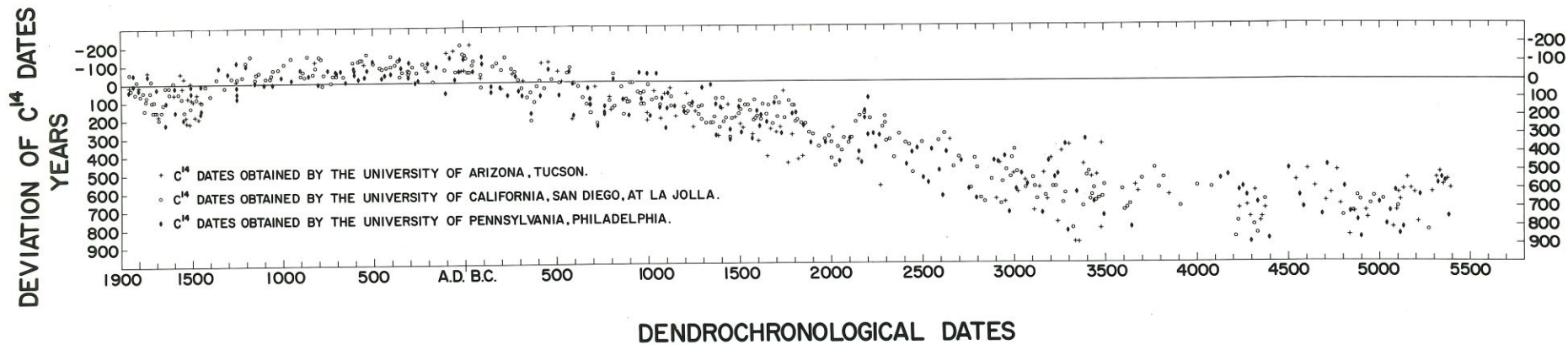


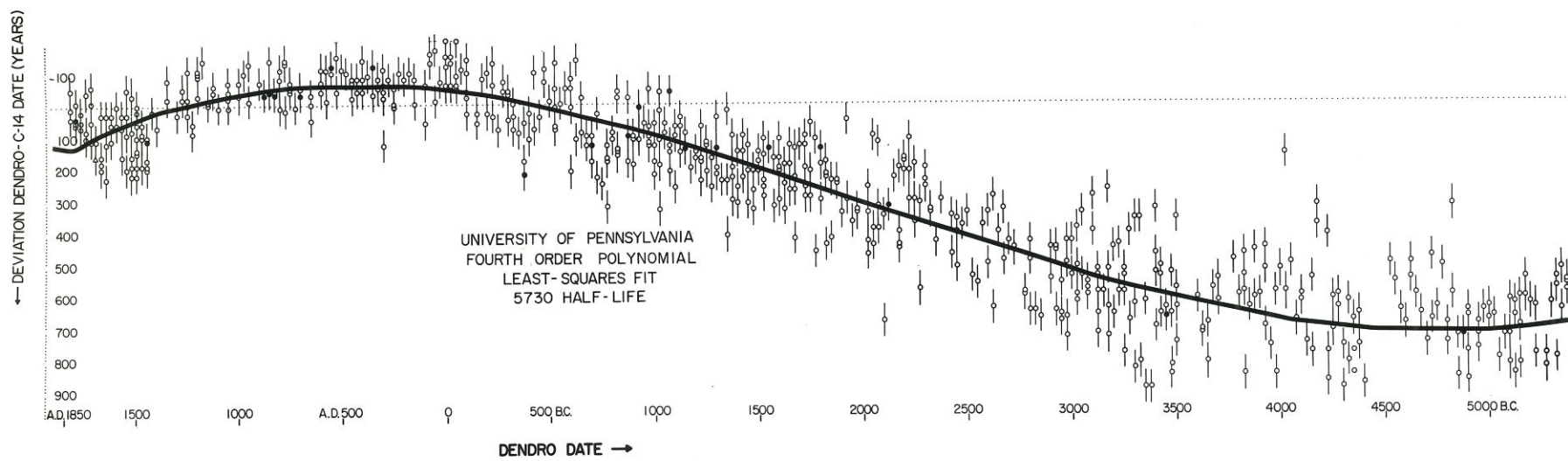


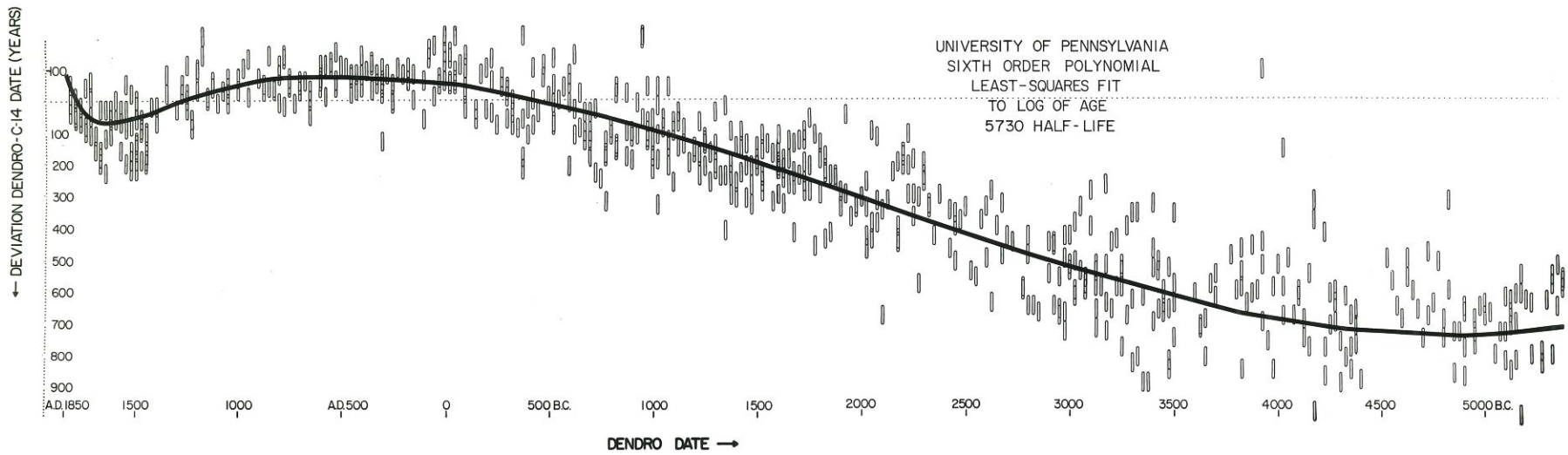


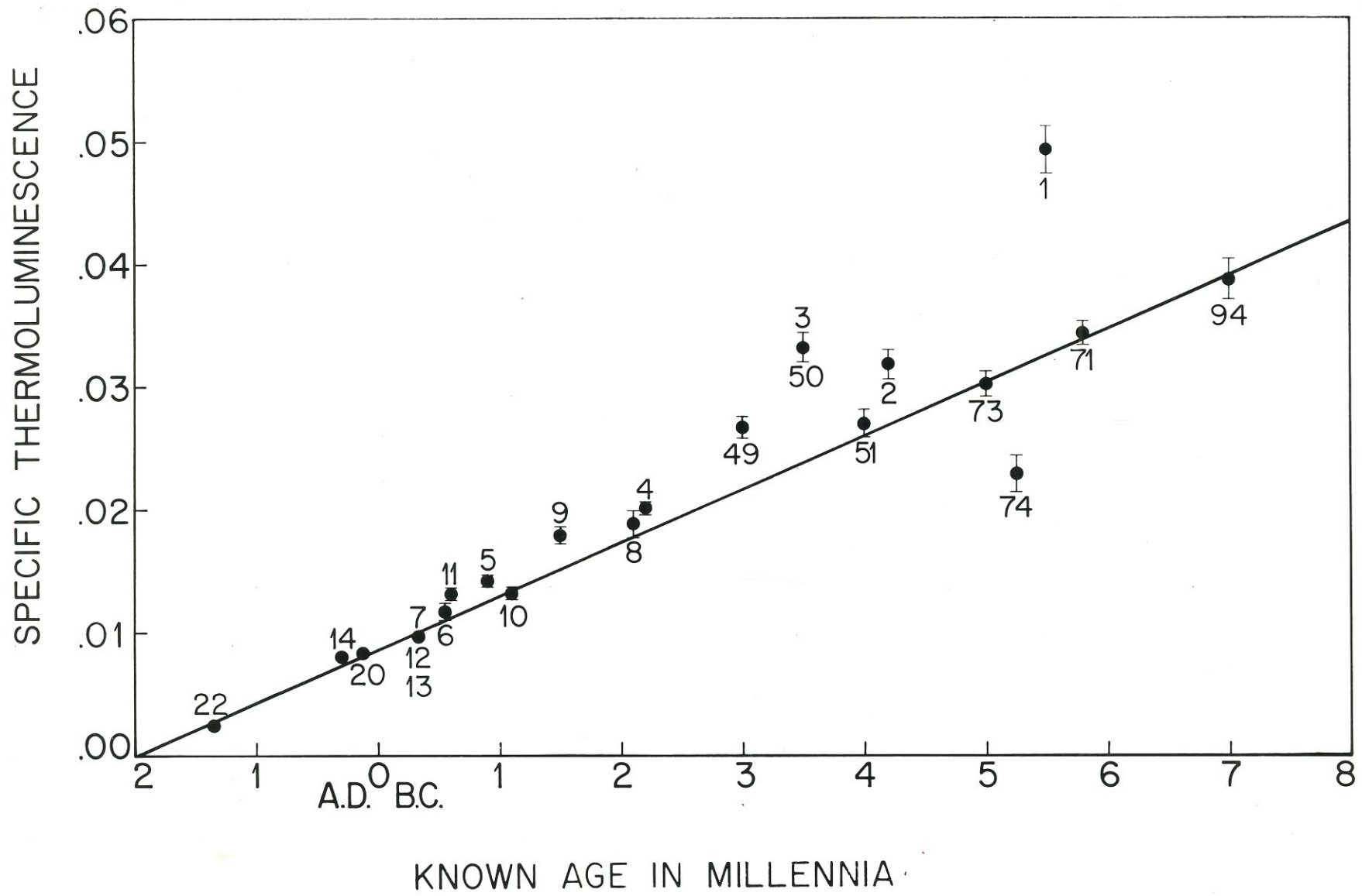


4TH ORDER POLYNOMIAL  
LEAST SQUARES FIT  
TO LOG OF AGE  
AMPLE FLOATING AVERAGE

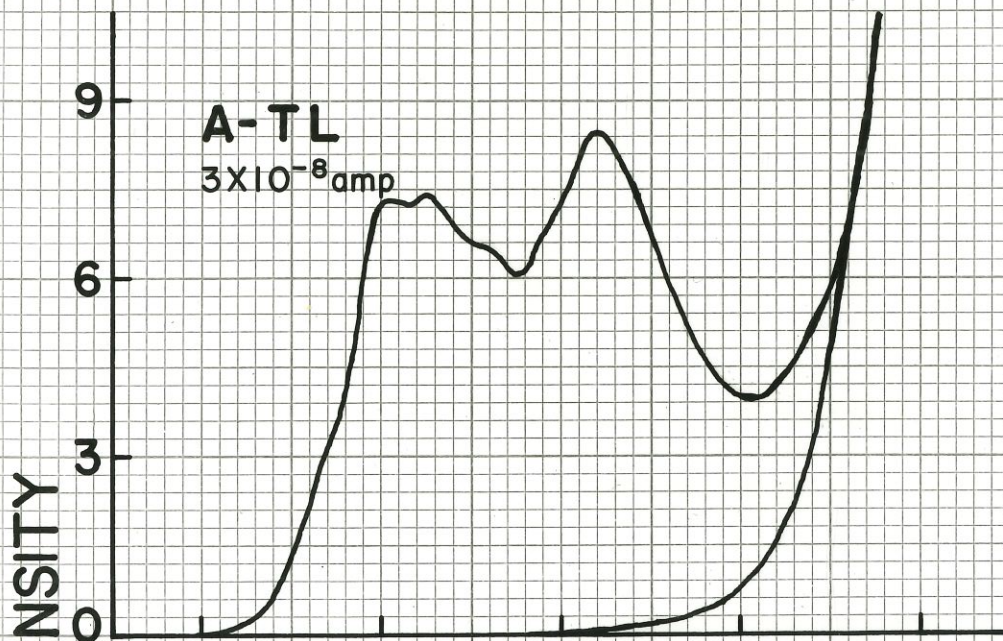




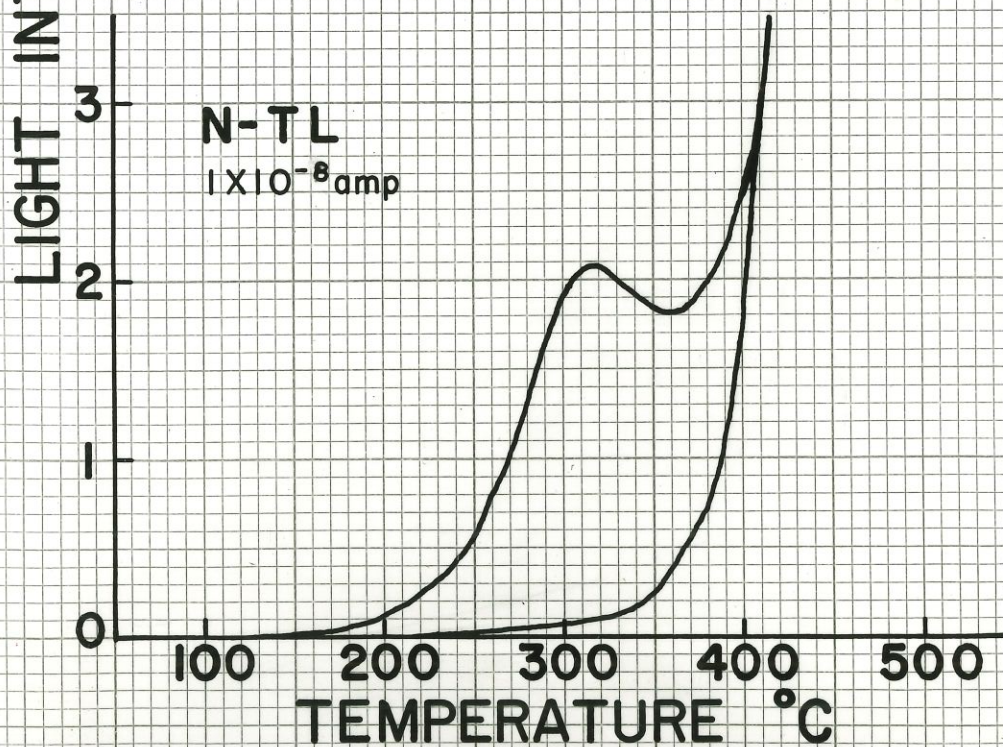




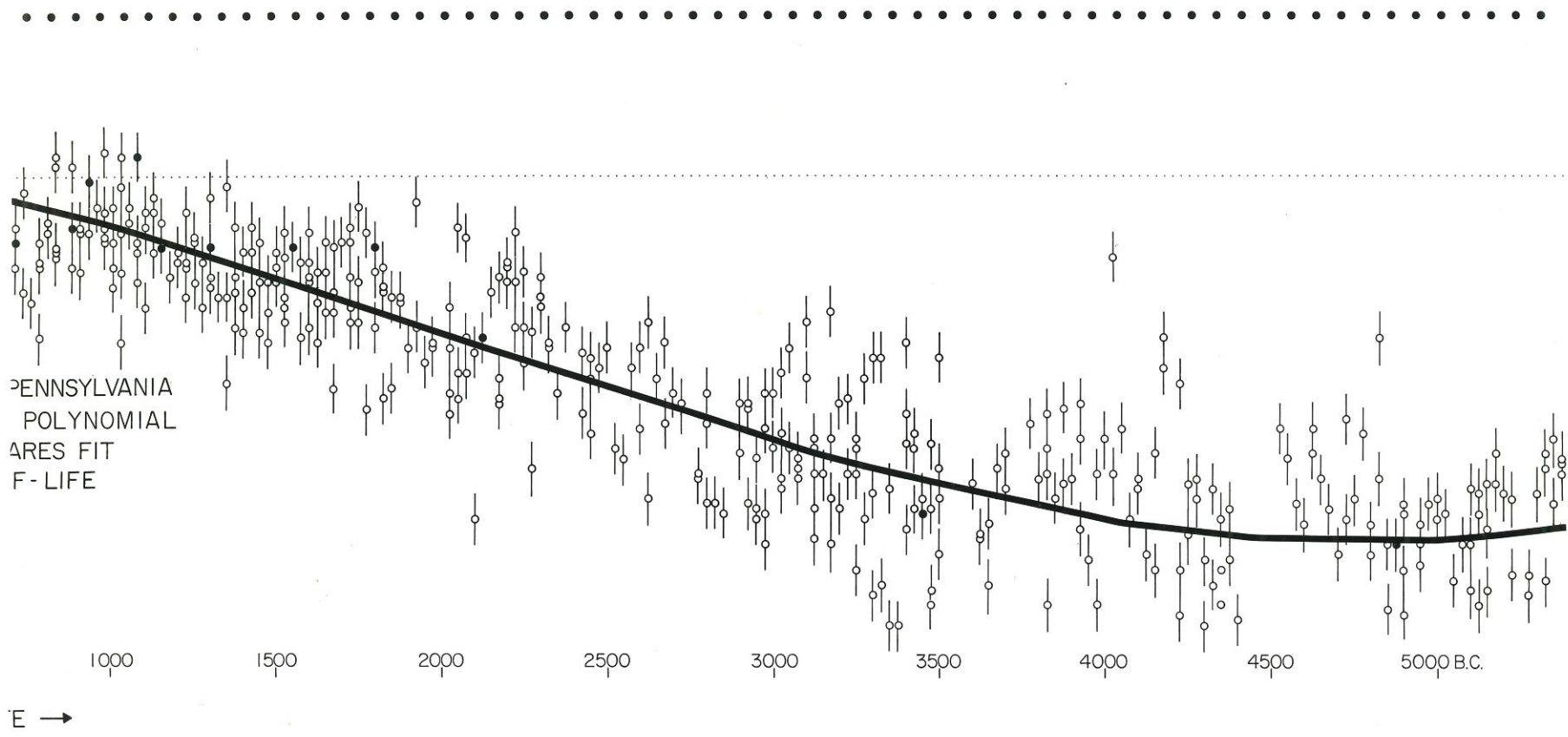
P-T-5A



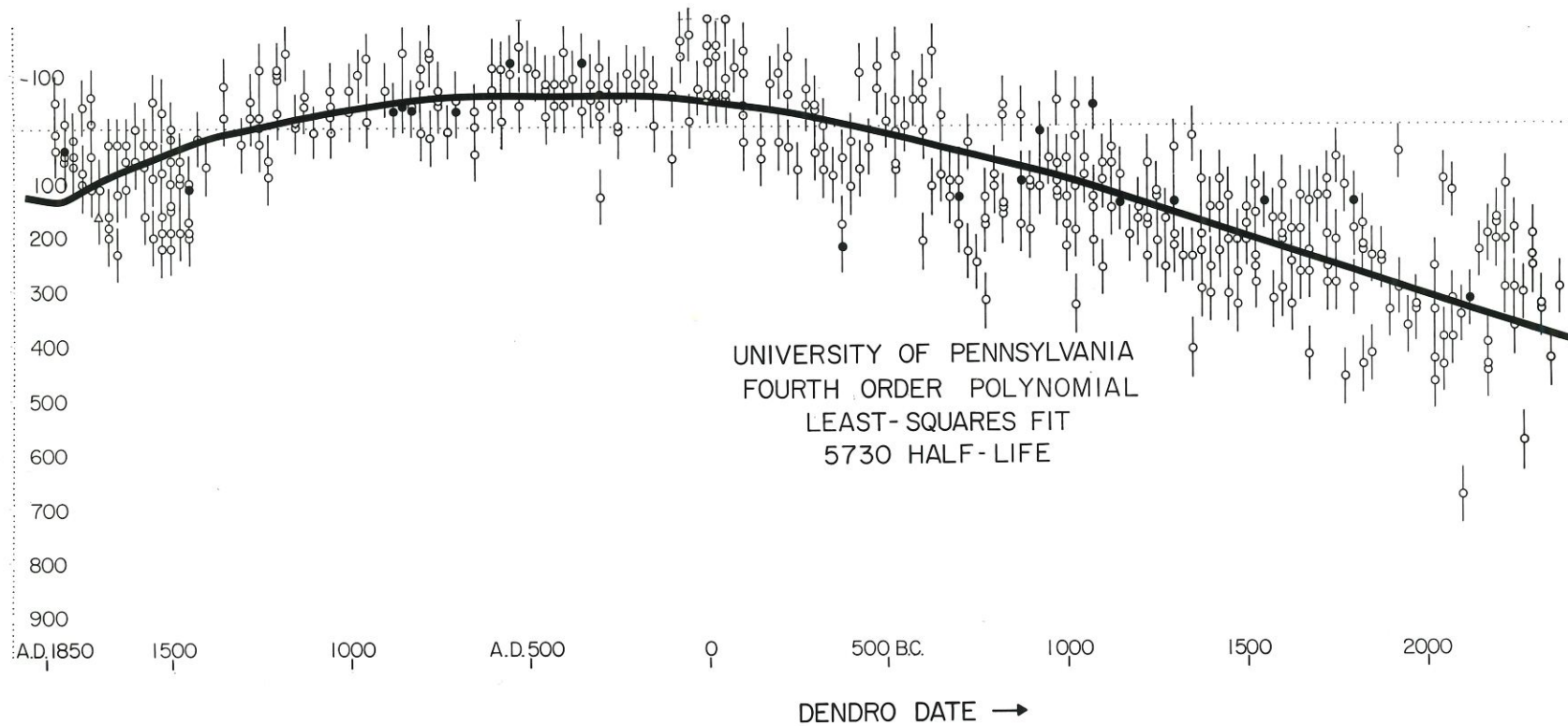
A-TL  
 $3 \times 10^{-8}$  amp



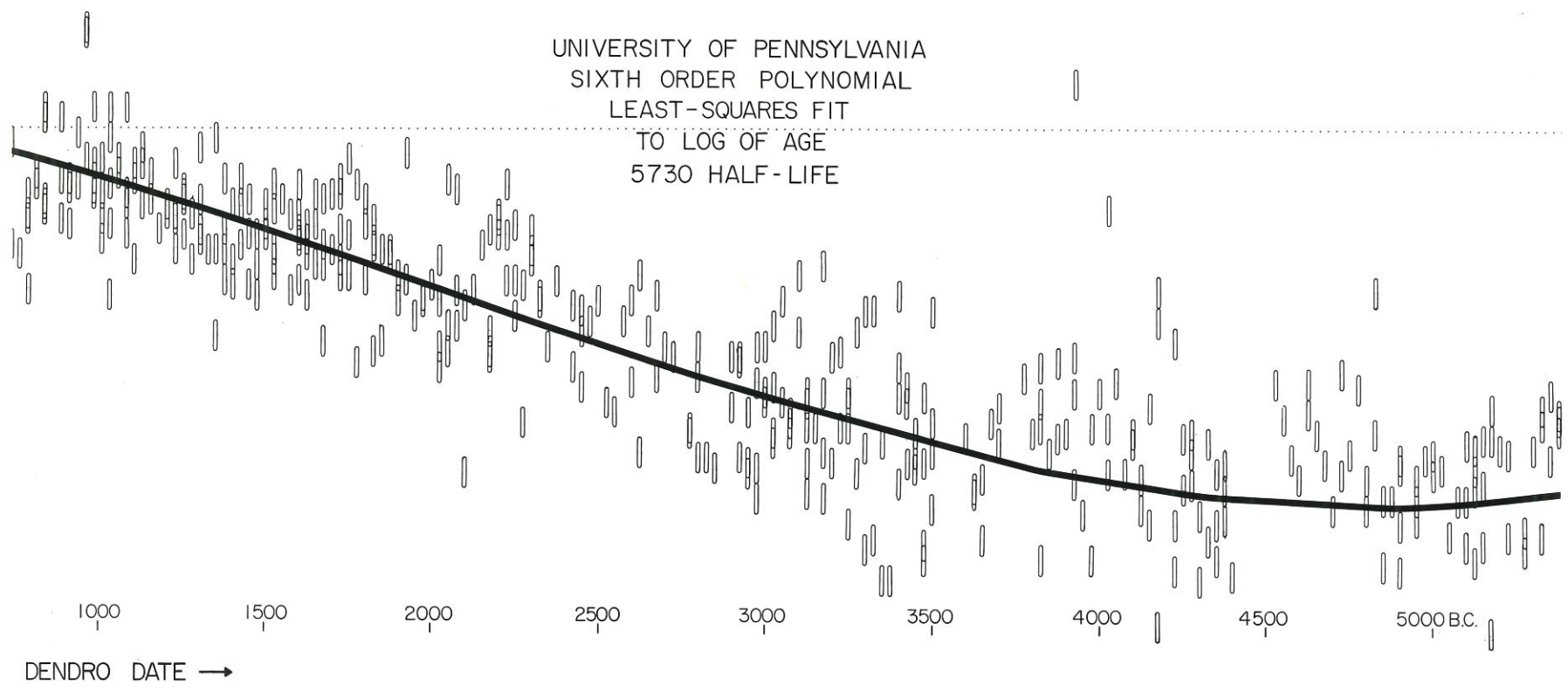
N-TL  
 $1 \times 10^{-8}$  amp

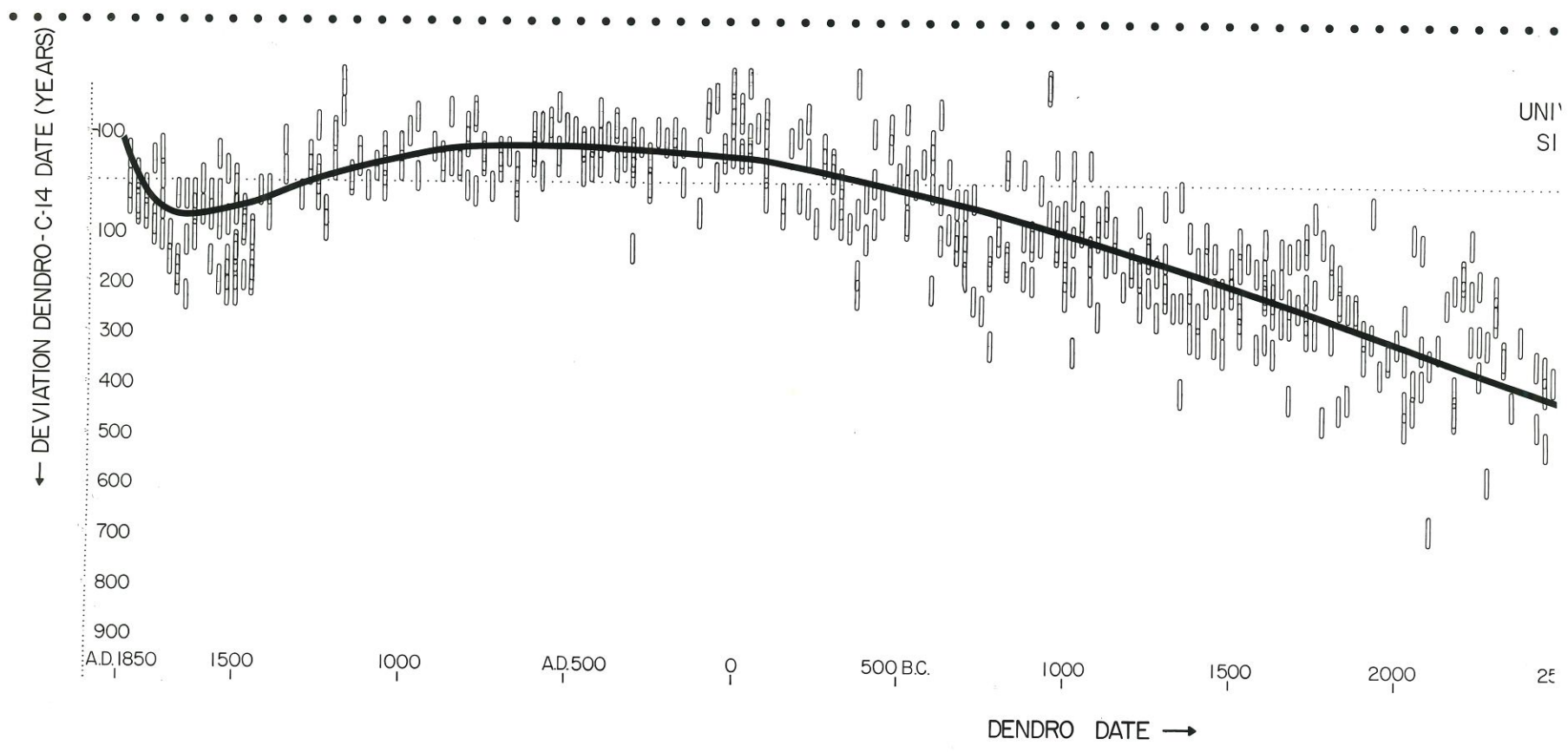


← DEVIATION DENDRO-C-14 DATE (YEARS)

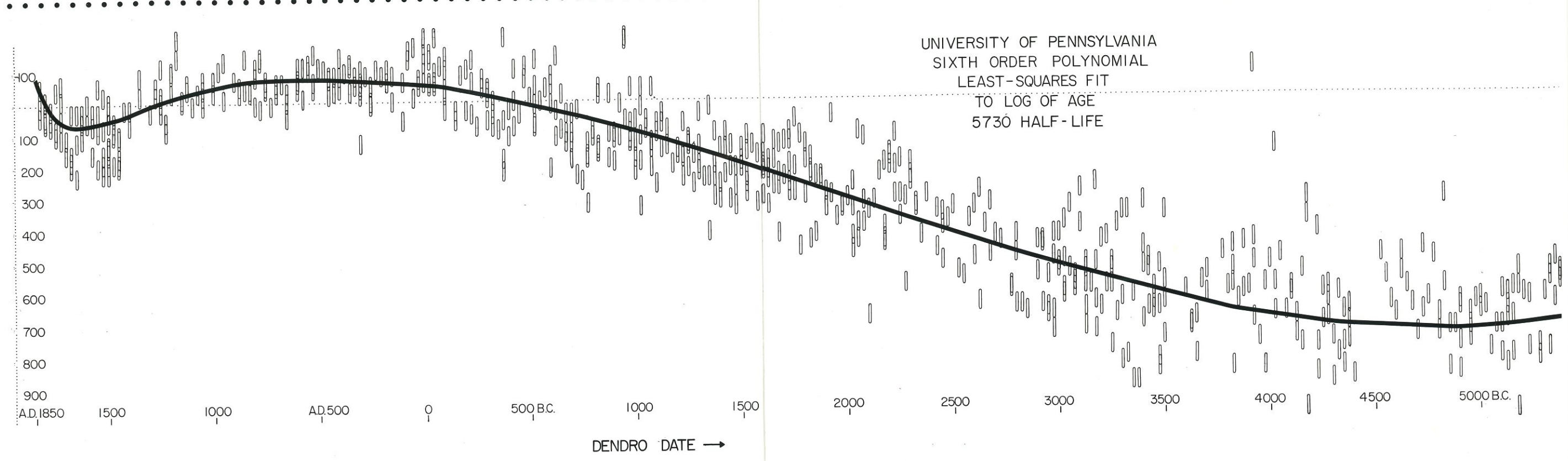


UNIVERSITY OF PENNSYLVANIA  
SIXTH ORDER POLYNOMIAL  
LEAST-SQUARES FIT  
TO LOG OF AGE  
5730 HALF-LIFE

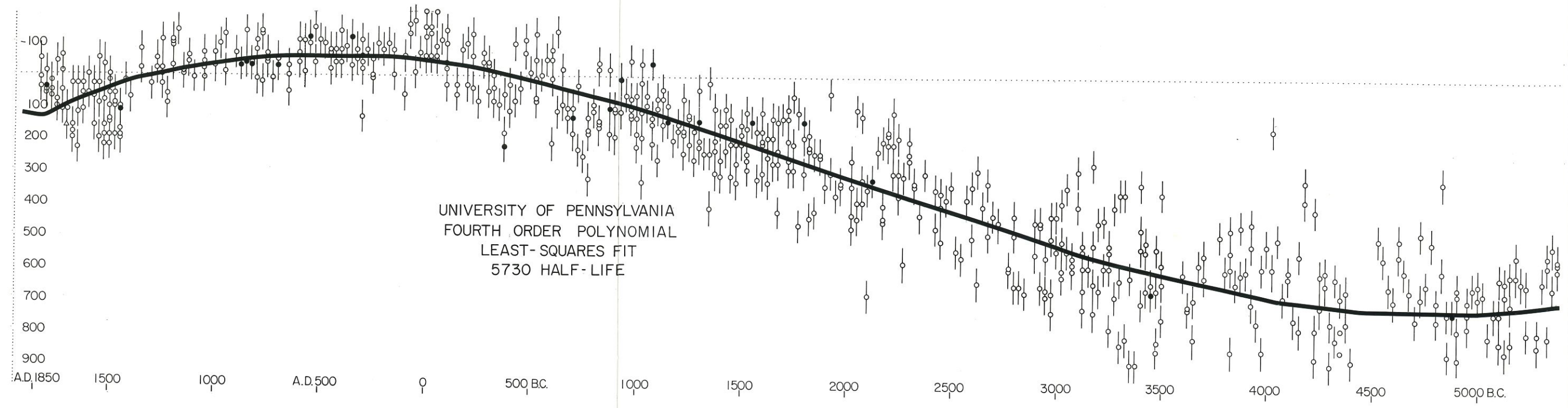




← DEVIATION DENDRO-C-14 DATE (YEARS)



← DEVIATION DENDRO-C-14 DATE (YEARS)



A.D. 1850 1500 1000 A.D. 500 0 500 B.C. 1000 1500 2000 2500 3000 3500 4000 4500 5000 B.C.

DENDRO DATE →