

Muse. Dendro. C14

pink only

No. ....

Name .....

Order .....

Remarks .....

Retouched .....

Order Finished .....

Reorder .....

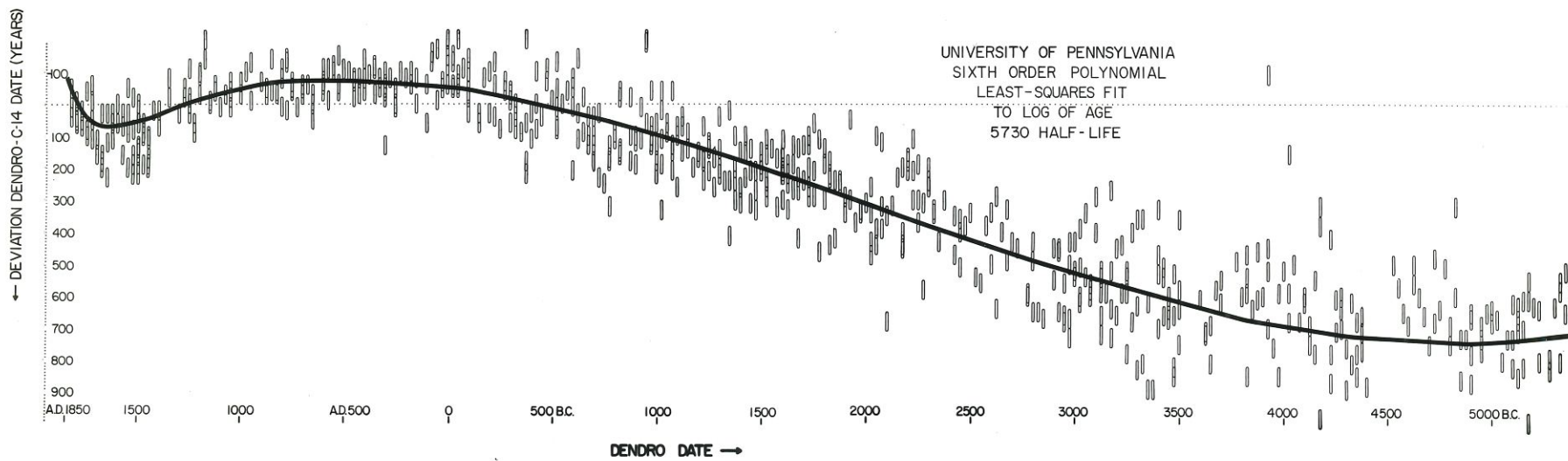


Fig. 4

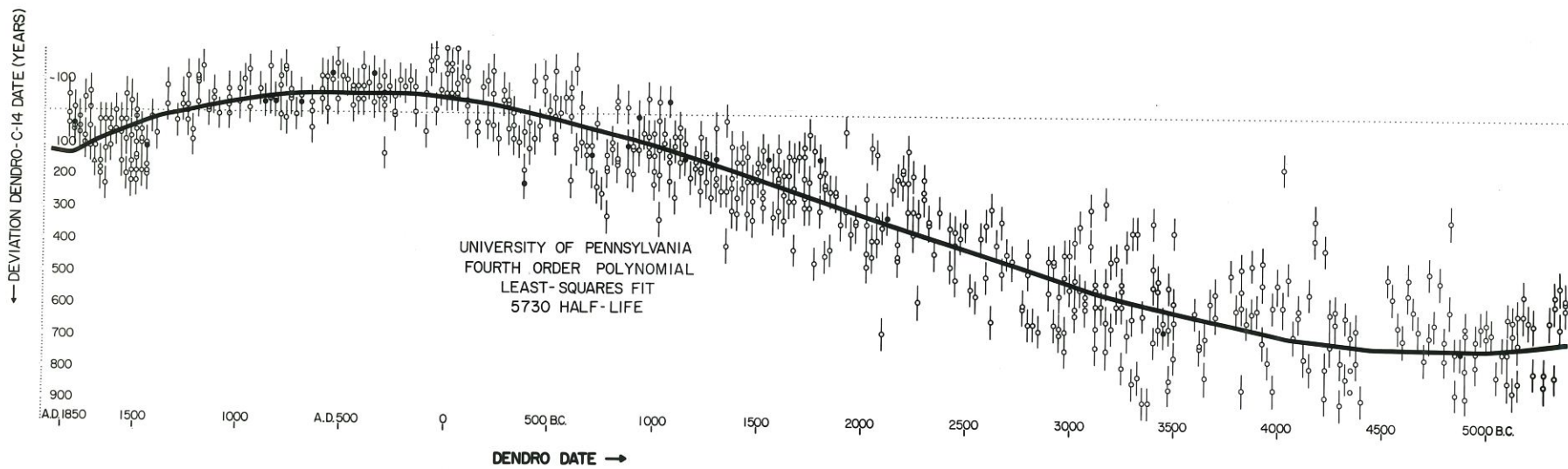


Fig. 3

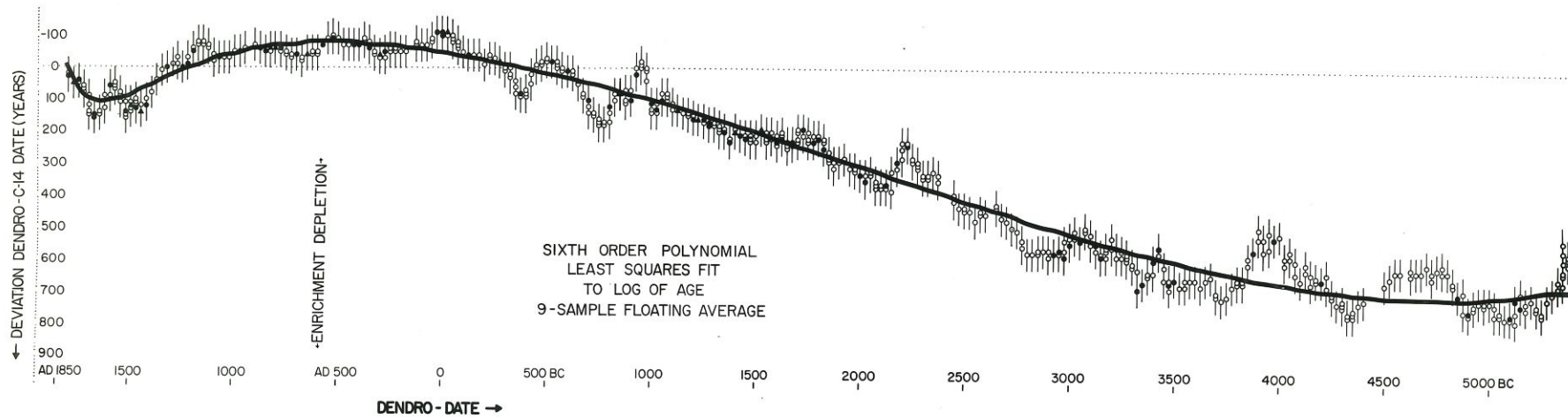


Fig. 13

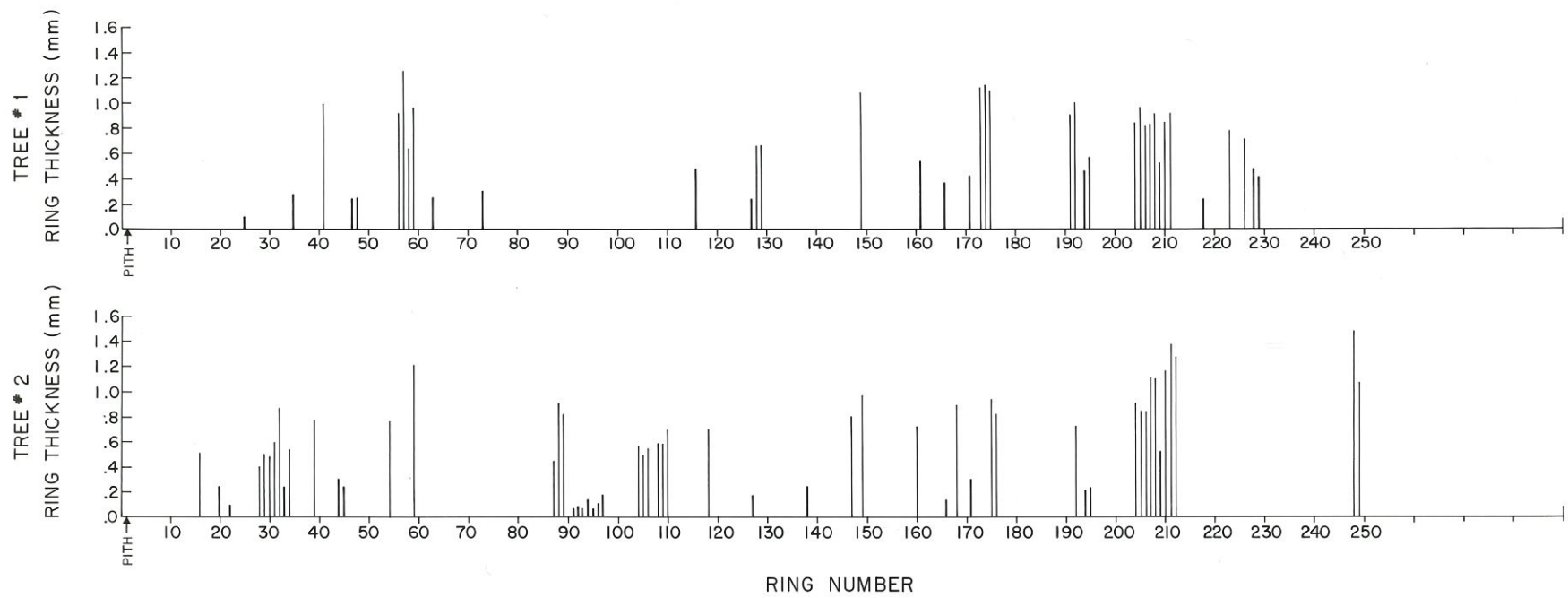


Fig. 2.1

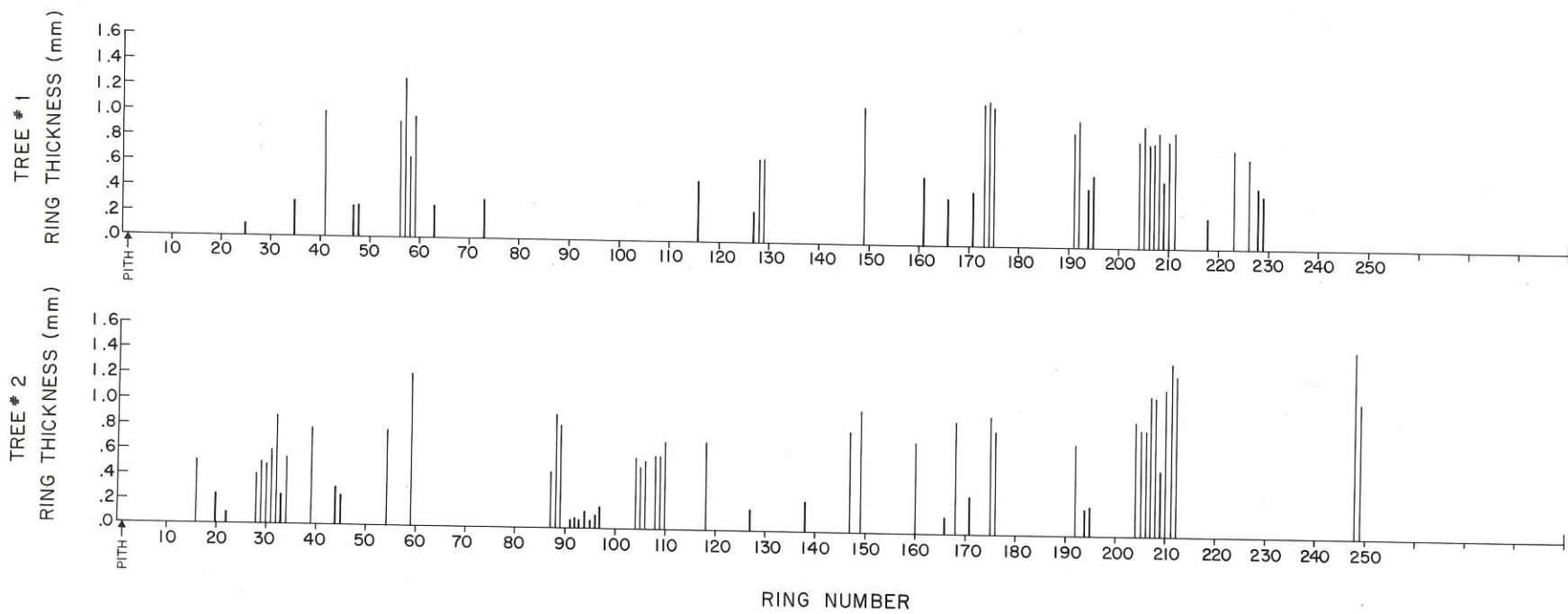


Fig. 2.1

Figure 1. Comparison of archaeological dates (solid bars) and radiocarbon dates (open bars) to which the MASCA correction factor has been added. All samples were of short-lived materials. Nos. 1-4, 11-13, and 16 were reed mattings, nos. 5-10, and 15 linen, no. 14 cloth, no. 17 charred human bone, and no. 18 a mixture of charcoal, bone, and connective tissue. Several laboratories have participated in the original dating of the samples.