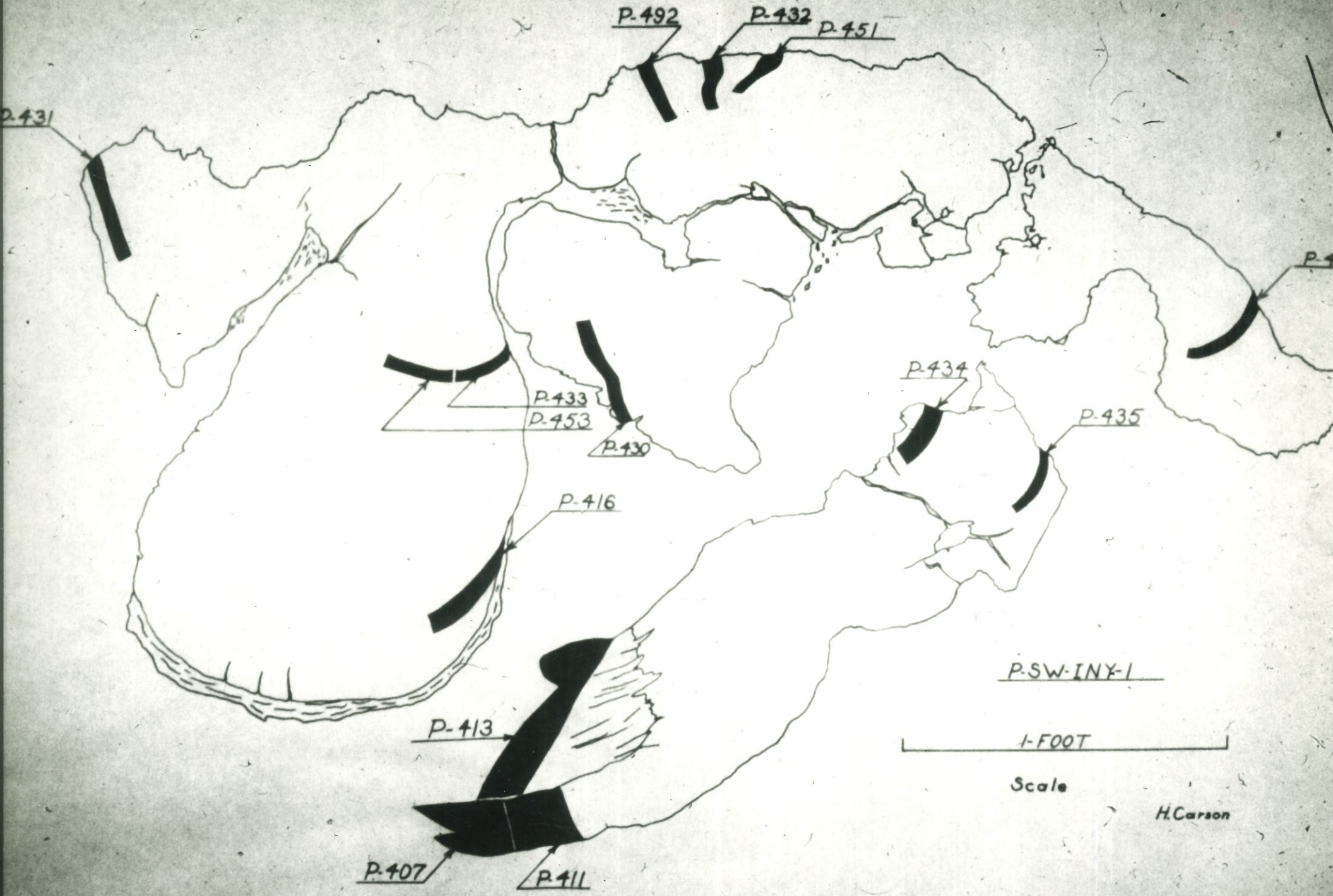
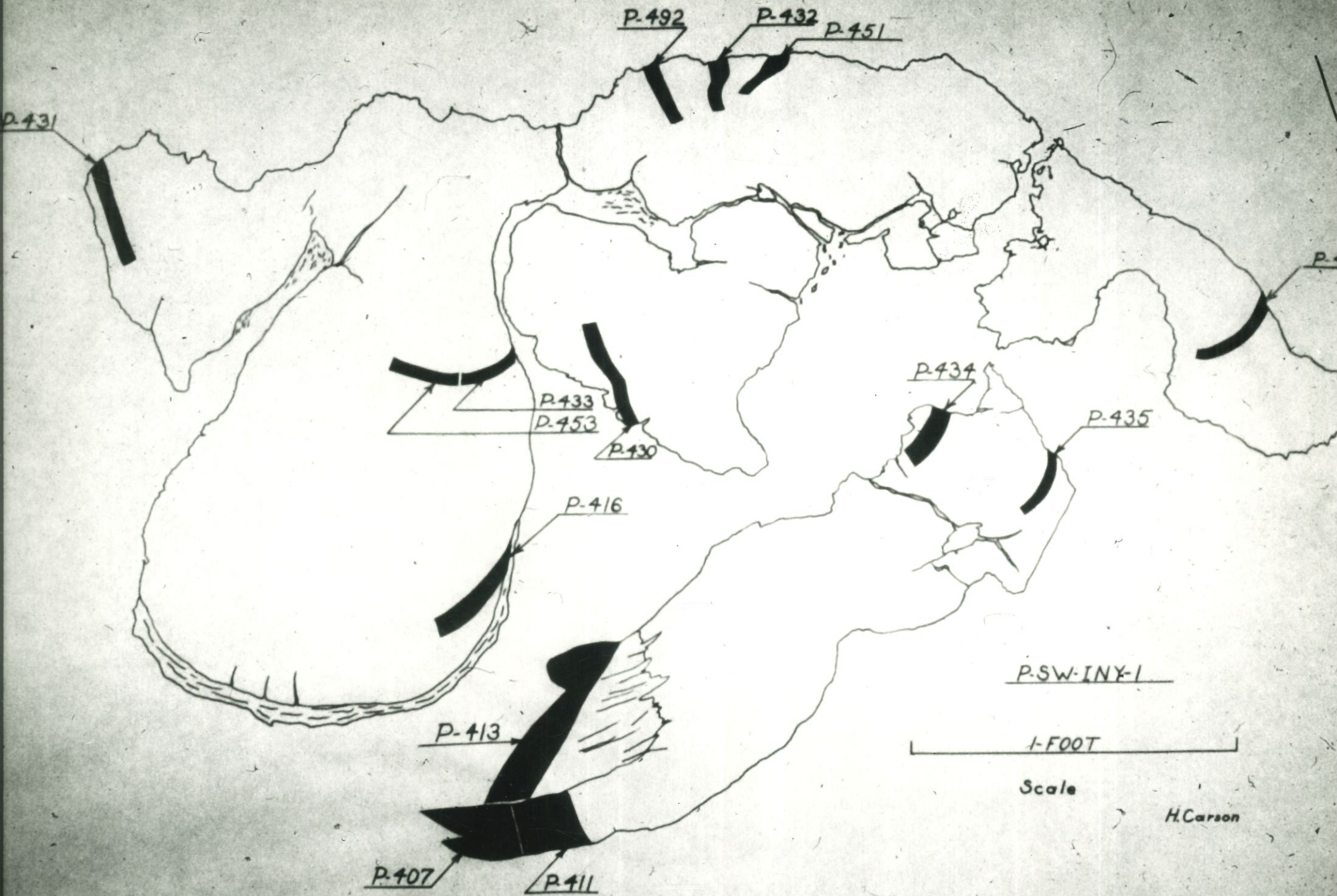


T. #1



Drawing of a section of bristlecone pine showing location of samples  
which were taken for C-14 dating. Tree was about 4000 years old.







Bristlecone Pines  
White mts., California







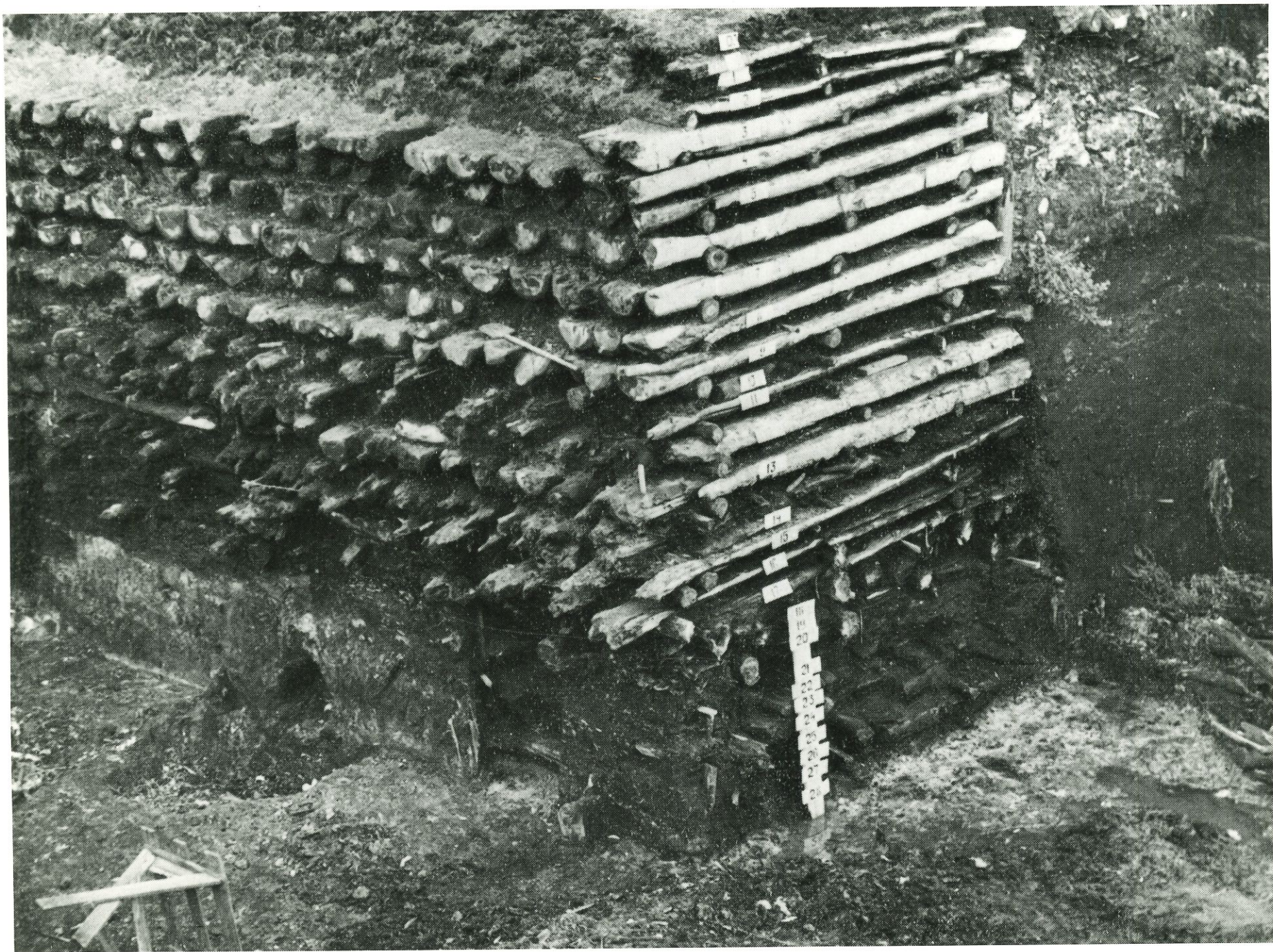


Fig. 2.2





Dendrochronograph  
measuring width of tree rings

Dendrochronograph (for measuring the  
width of tree-rings)





No. ....

Name Bristle cone pine (ca. 1967)  
B&W negative & prints. Color slide available.

Order .....

Remarks .....

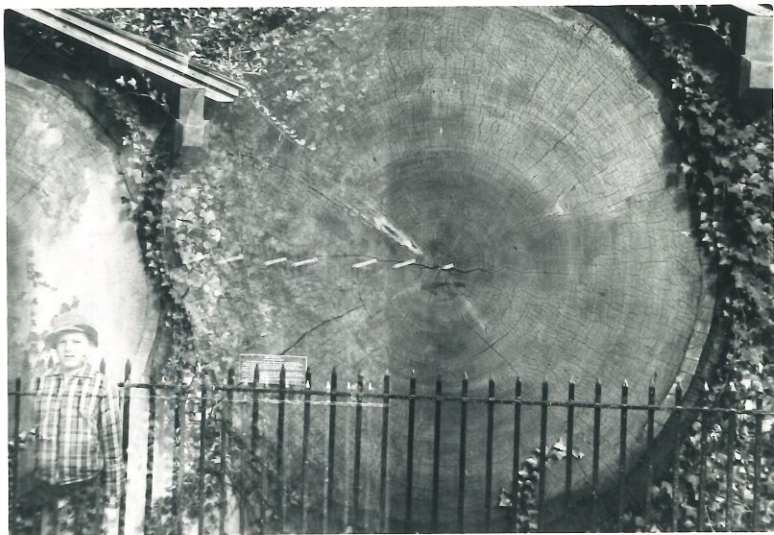
1) negative

Retouched .....

2) glossy prints

Order Finished .....

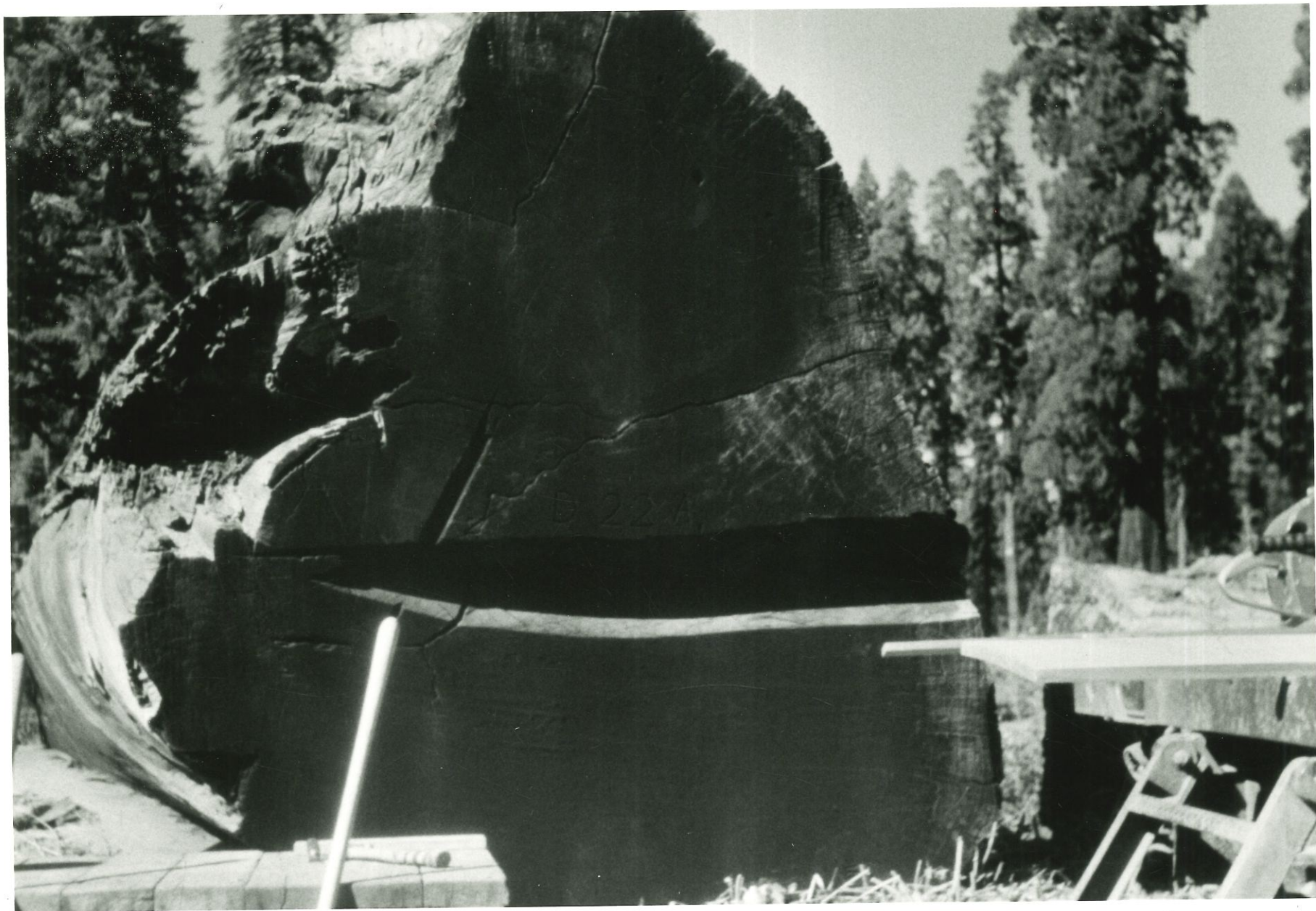
Reorder .....



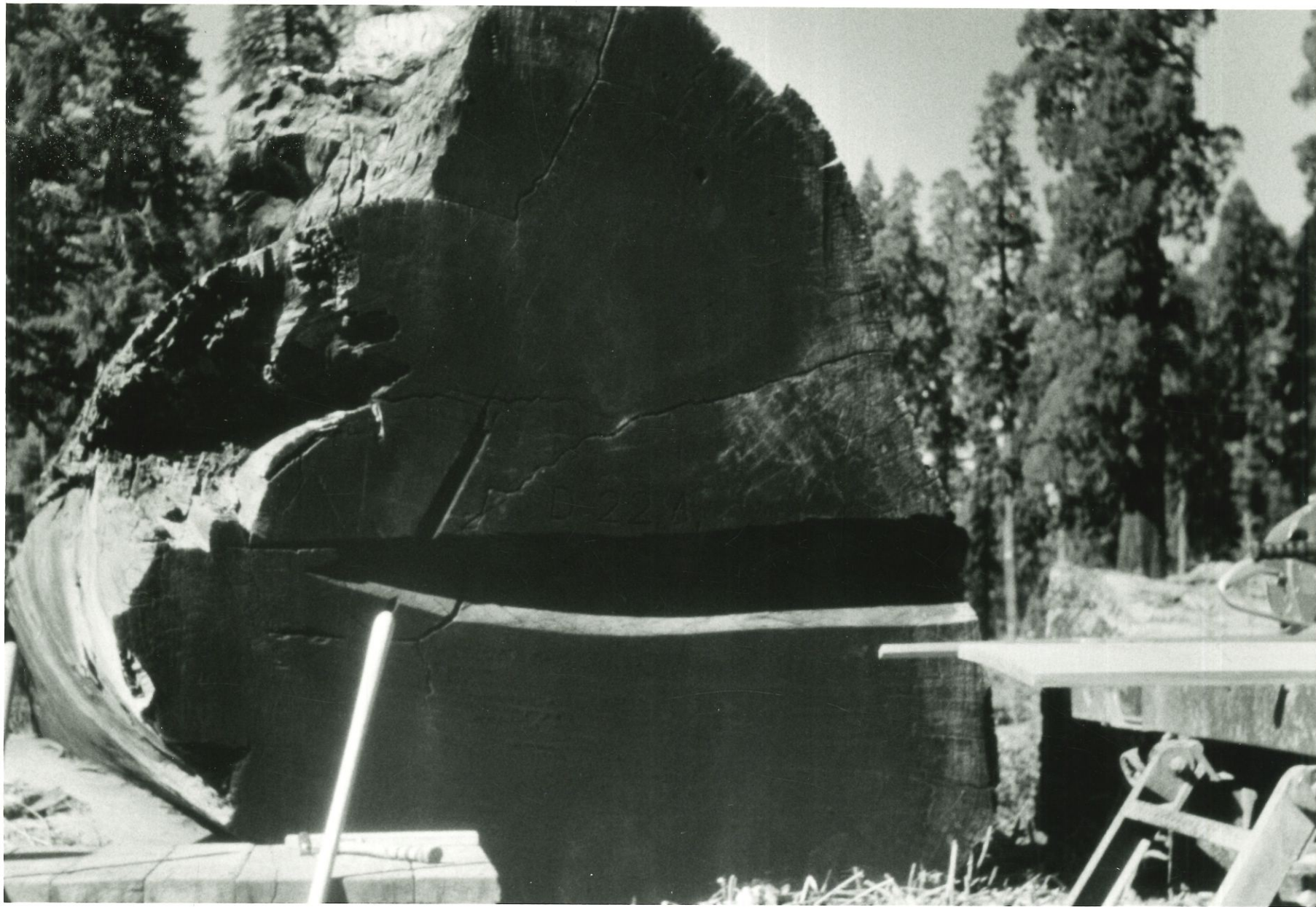
Sequoia section in Longwood  
Gardens.

About 100 feet above ground;  
contains about 1800 rings.

Taken in Dec. 1960



Section of Sequoia gigantea



## THE OLDEST LIVING THING ON EARTH

This mammoth cypress called the "Tree of El Tule" stands in a village churchyard near Oaxaca, Mexico, where for centuries it has been worshipped as a symbol of life by native Indian tribes.

The tree was old and venerable when Christ was born. In its immediate vicinity are the ruins of Mitla and Monte Alban, famous archeological remnants of an advanced civilization which once flourished here.

El Tule's guardians and botanical scientists say this Methuselah of the vegetable kingdom has lived more than 5000 years. They make other claims too: More poetry and legendry have been written about El Tule than any other tree, dead or living. It is the only tree for which a church was built. El Tule's age-old trunk measures more than 120 feet in circumference with a stretched tape, a world record.

The 20th century descendants of the tree-worshipping Zapotecs and Mixtecs still regard El Tule as the sacred personification of life. Twice each year, at Easter and Christmas, they hold special festivities in the cool shadows of its protective branches.

El Tule dominates the churchyard, spreading herself like a globular old woman. From a distance she presents a roundish silhouette of dense foliage. Her overall height is less than 150 feet.

California's redwood giants can look down on El Tule. However all trees---including the California redwood sequoias and junipers of the Sierras, the African baobabs and Australian eucalyptus---are inferior to El Tule's age and circumference.

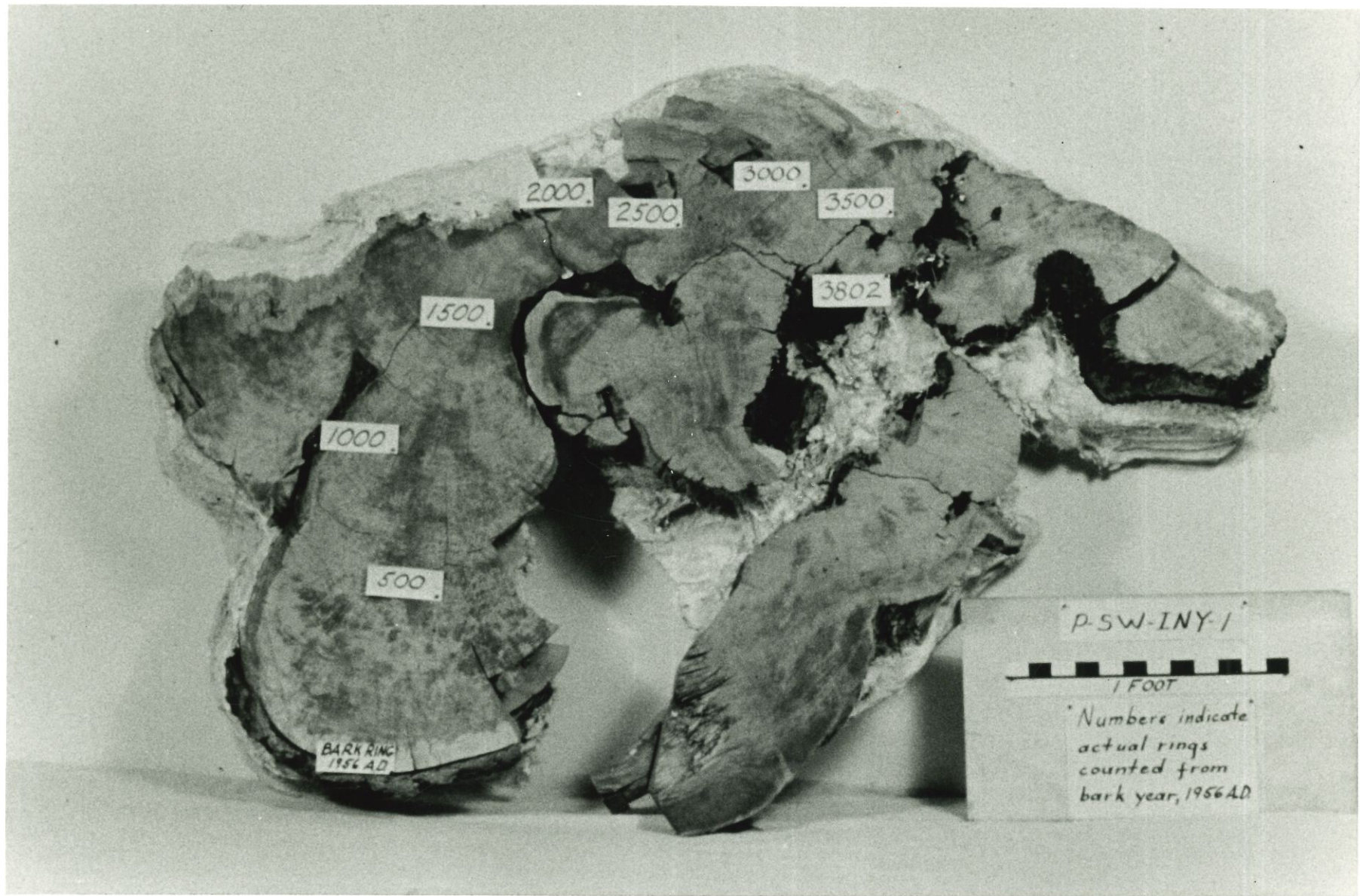
This prehistoric monster was a majestic landmark when Columbus discovered America. But the tree is still healthy and growing. There may in fact be no end to the longevity of El Tule since no record exists of a Mexican "ahuehete" tree dying of old age.

###



DON GLASSMAN  
COPYRIGHTED BY  
DON GLASSMAN

Don Glassman  
2000 Connecticut Avenue  
Washington, D. C. 20008



BARK RING  
1956 AD

1000

500

1500

2000

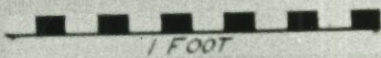
2500

3000

3500

3802

P-SW-INY-1



1 FOOT

Numbers indicate  
actual rings  
counted from  
bark year, 1956 AD

Section of bristlecone pine  
with tree-ring dates  
Sections were dated also by  $^{14}\text{C}$ .