

The Wall Line A '62

0 Max	=	1.7	PMU	=	48 - 21 =	27°
+ .5 m		15.1			= 46 - 22 =	24
1.0		10.7			= 48 - 21 =	17
1.5		6.3			= 30 - 20 =	10
2.0		1.3			= 22 - 20 =	2
2.5		-1.3			= 17 - 19 =	-2

$$-.5 \quad \cdot \quad 45 - 21 = 24$$

3.0	-	3.8	12 - 18	-	6
3.5	-	4.4	10 - 17	-	7
4.0	-	4.7	7.5 - 15	-	7.5
4.5	-	5.0	6 - 14	-	8
5.0	-	4.7	5.5 - 13	-	7.5
5.5	-	4.4	5 - 12		7
6.0	-	4.4	3.5 - 10.5		7

4 m deep

0	1.9	12.9 - 9.9	3.0
.5	1.7	12.3 - 9.6	2.7
1	1.6	12.0 - 9.5	2.5
1.5	1.4	11.3 - 9.1	2.2
2	0.9	10.3 - 8.8	1.5

15

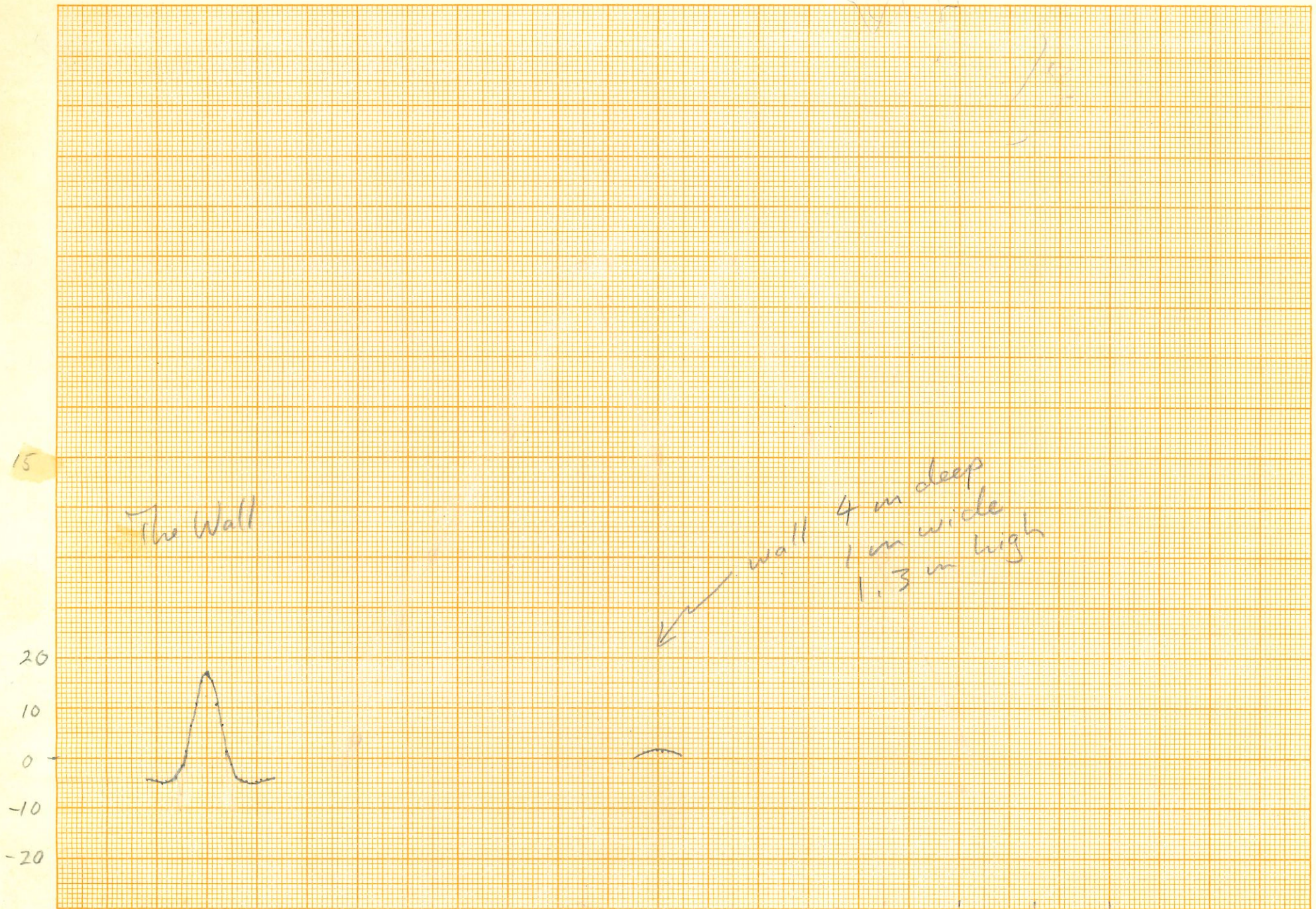
The Wall

20
10
0
-10
-20

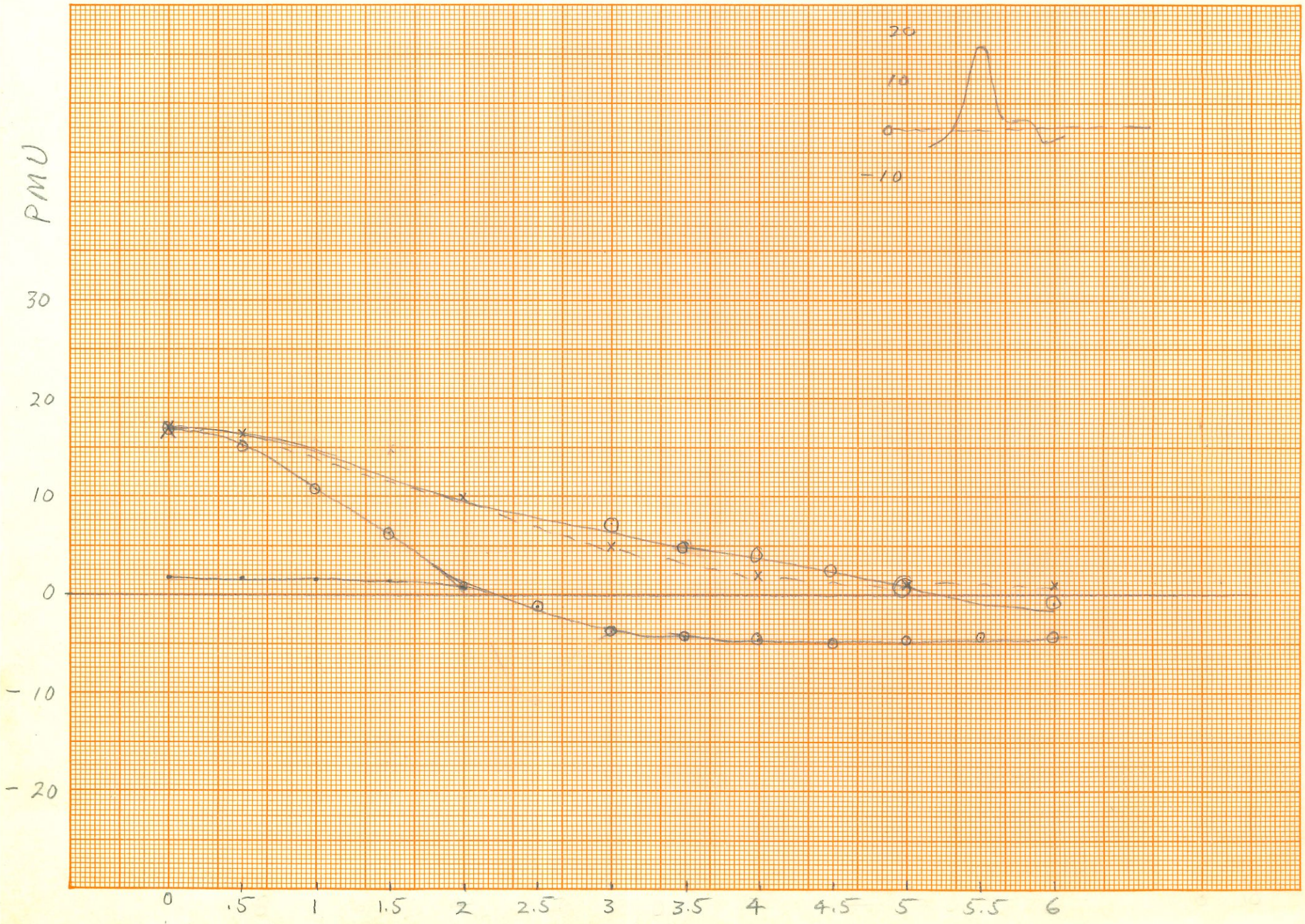
10 5 0 5 10

10 5 0 5 10

wall 4 m deep
1 m wide
1.3 m high



PMU



TEST PIT A

N SIDE OF WALL

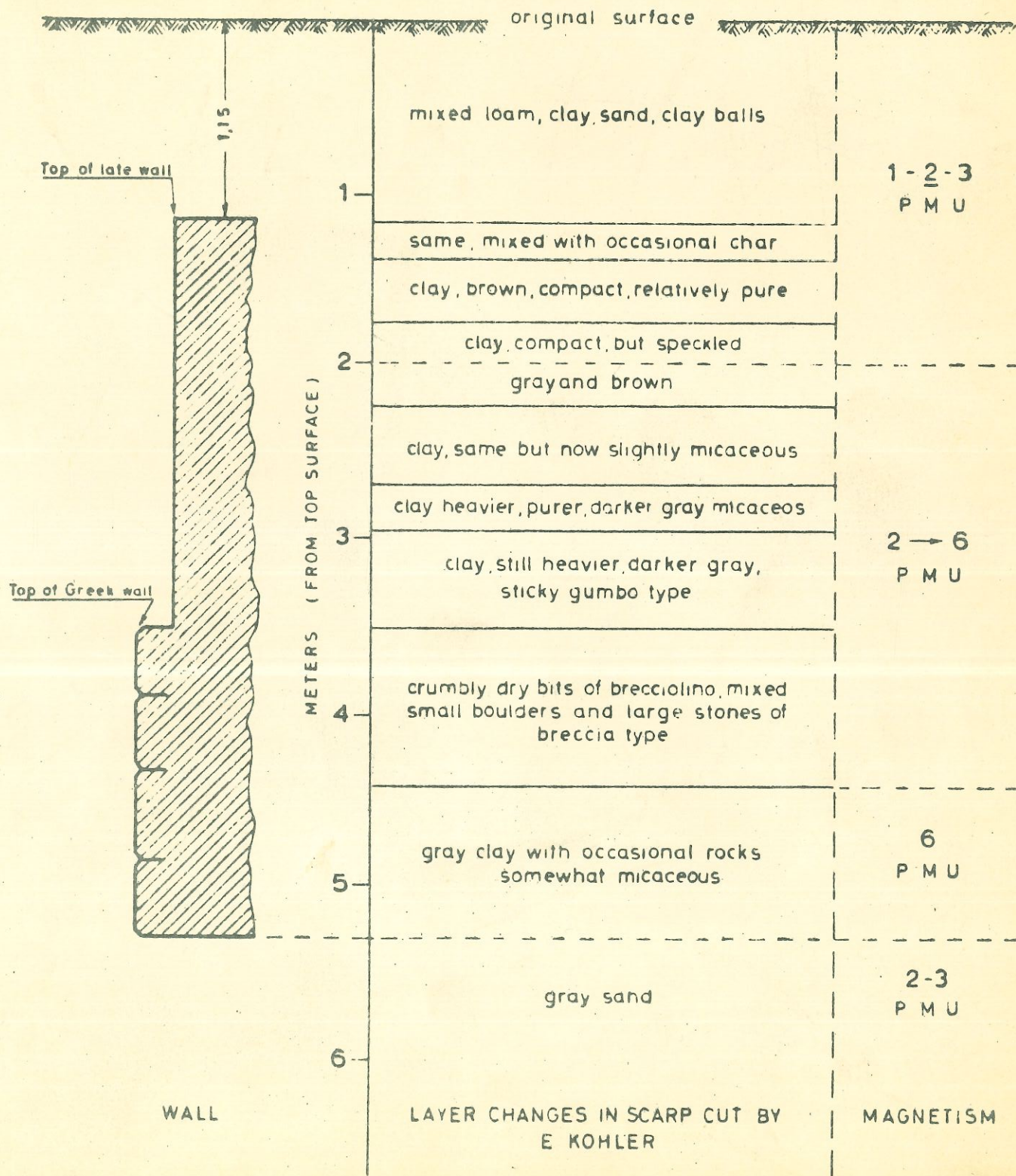


Fig. 1

LINE 67 WITH WALL ANOMALY

PROTON MAGNETOMETER
LINE WITH WALL ANOMALY

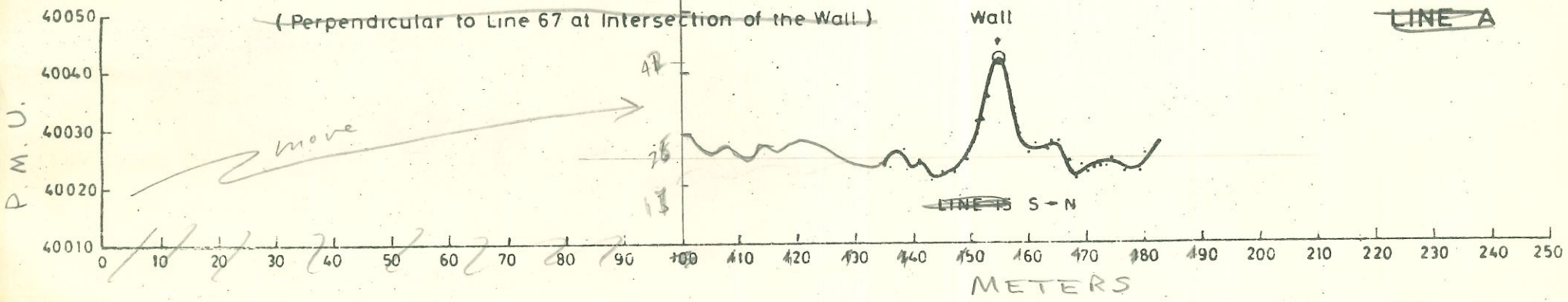


Fig. 2

LINE 67 WITH WA. 1900

1.6
3
4.8

4
2.5
2.2

