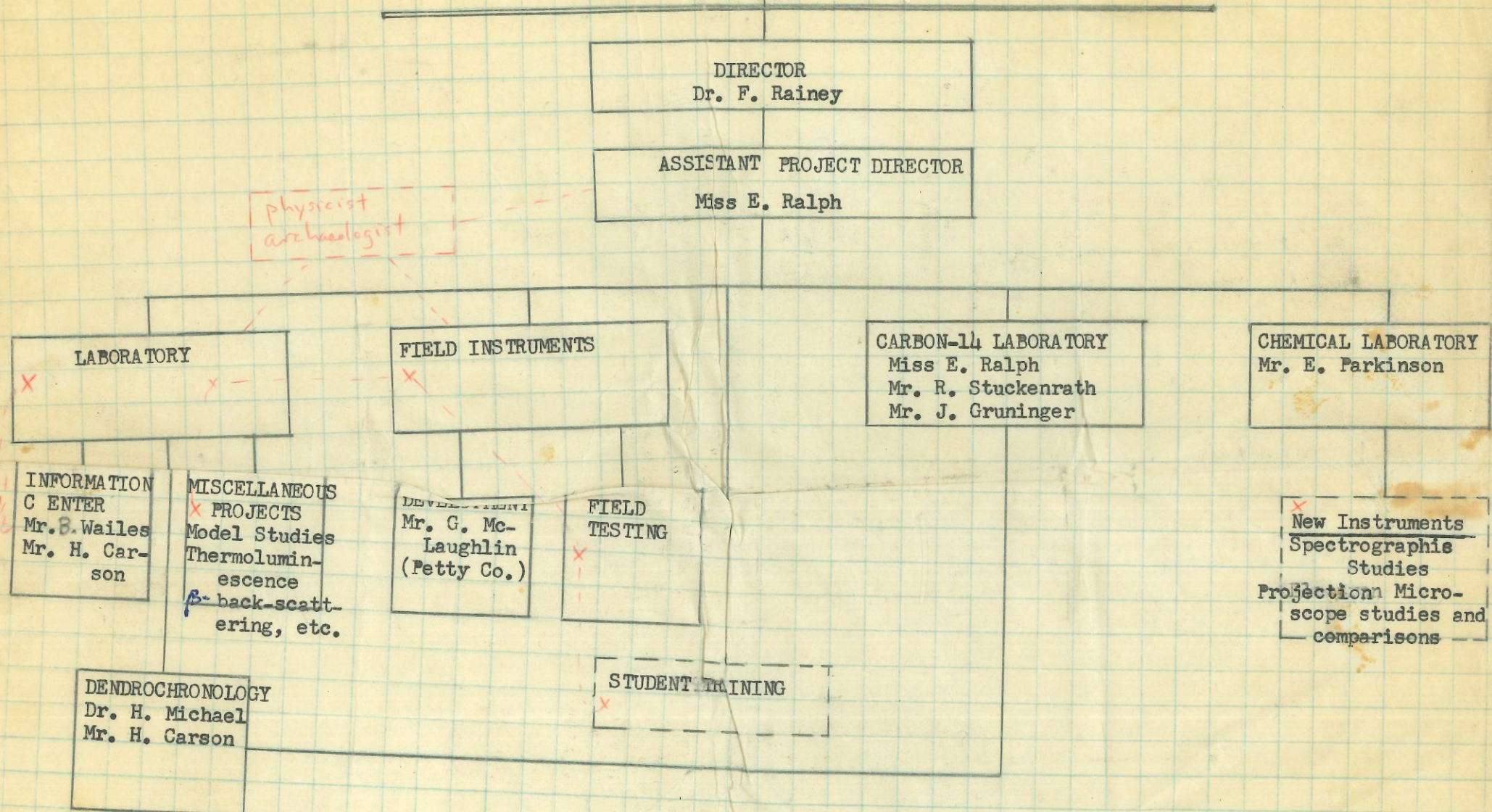


UNIVERSITY MUSEUM
ARCHAEOLOGICAL TECHNIQUES

October 18, 1961



X = positions open, either full- or part-time

MASCA PERSONNEL

Froelich Rainey
Director

Elizabeth K. Ralph
Associate Director

RADIOCARBON LABORATORY	
J. of PA. SUPPORT	NSF SUPPORT
E. K. Ralph Barbara Lawin John Hedrick	Henry Michael (part-time) John Winter

THERMOLUMINESCENCE
Mark Han Douglas Hancock

INFORMATION CENTER
Francesca Giegengack

ARCHAEOLOGICAL PROSPECTING INSTRUMENTS AND SURVEYS
F. Rainey E. Ralph J. Winter Student Assistants

NEW PROJECTS			
AERIAL PHOTOGRAPHY	CHEMICAL STUDIES OF ORGANIC COMPOUNDS	FISSION TRACK DATING	EXPANSION OF C-14 LAB
Bruce Bevan	J. Winter	Collaboration of Staff with Dept. of Geology	Chemical-Electronics Technicians and Collaboration with Dept. of Geology

MASCA PERSONNEL

F. Otto Haas
Director

Elizabeth K. Ralph
Associate Director

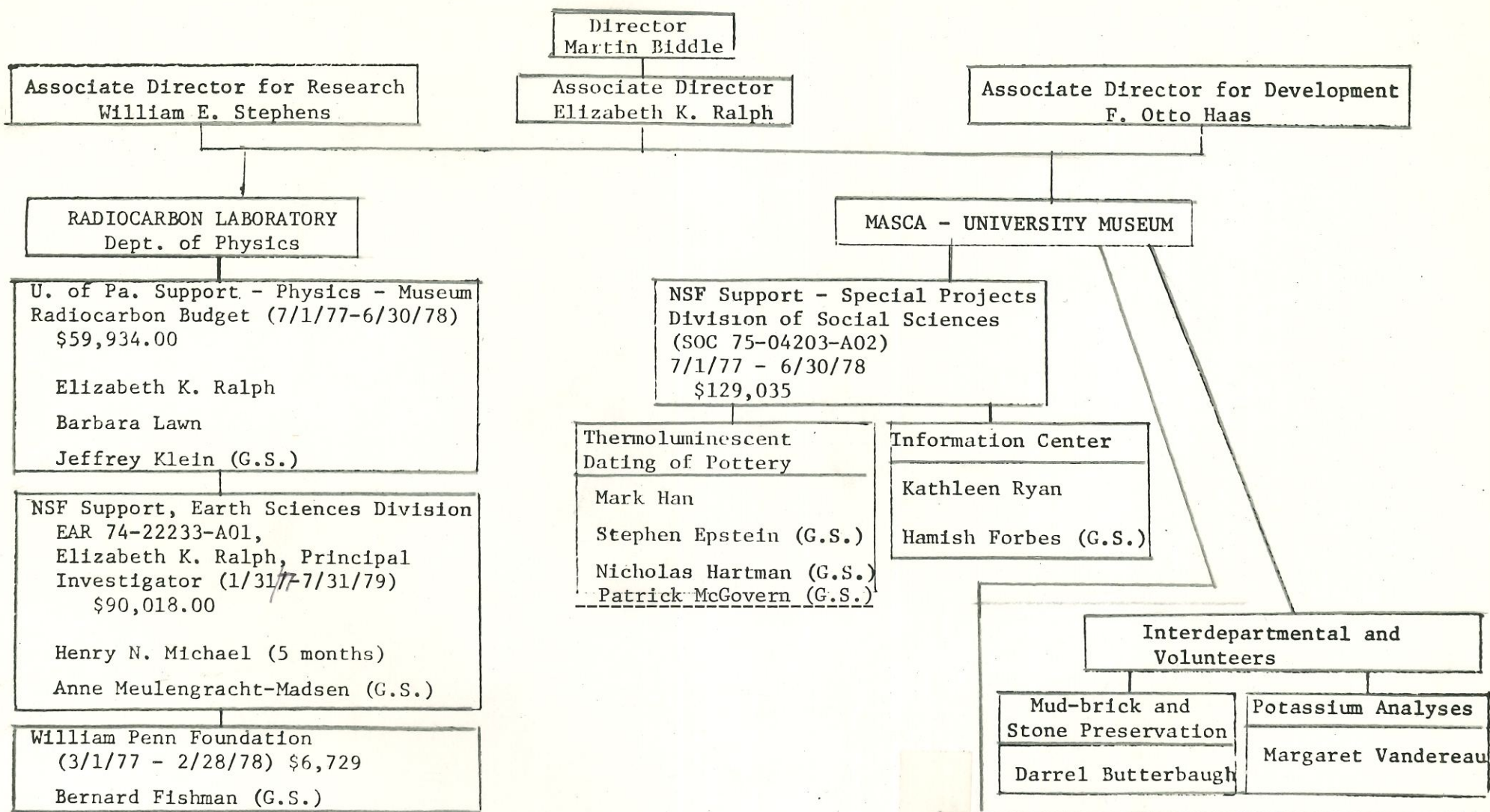
RADIOCARBON LABORATORY		THERMOLUMINESCENCE	INFORMATION CENTER	ARCHAEOLOGICAL PROSPECTING INSTRUMENTS AND SURVEYS	NEW	PROJECTS		EXPANSION OF C-14 LAB
U. of Pa. Support	NSF Support GA-12572	Mark Han John Carpenter, G.S.	Rick Haynes Kathleen Ryan David Wood, Summer 1974	F. Rainey E. Ralph B. Bevan Student Assistants and Volunteers	AERIAL PHOTOGRAPHY	CHEMICAL, PHYSICAL AND OTHER STUDIES IN FIELD AND LABORATORY		
E. K. Ralph Barbara Lawn Barry Weiss, G.S.	Henry Michael (part-time) John Mayes, G.S.				Bruce Bevan, G.S. and Collaborators	Volunteers Darrel Butterbaugh Margaret Vanderau	Gary Cariveau Michael Rosenberg, G.S. Julia Handy (part-time)	Collaboration with Dept. of Geology

Supported by Museum Grant NSF-GS-36308X
except for Archaeological Prospecting and Volunteers

G.S. = Graduate Student
1/2 - time in academic year
Full - time for 3 summer months.

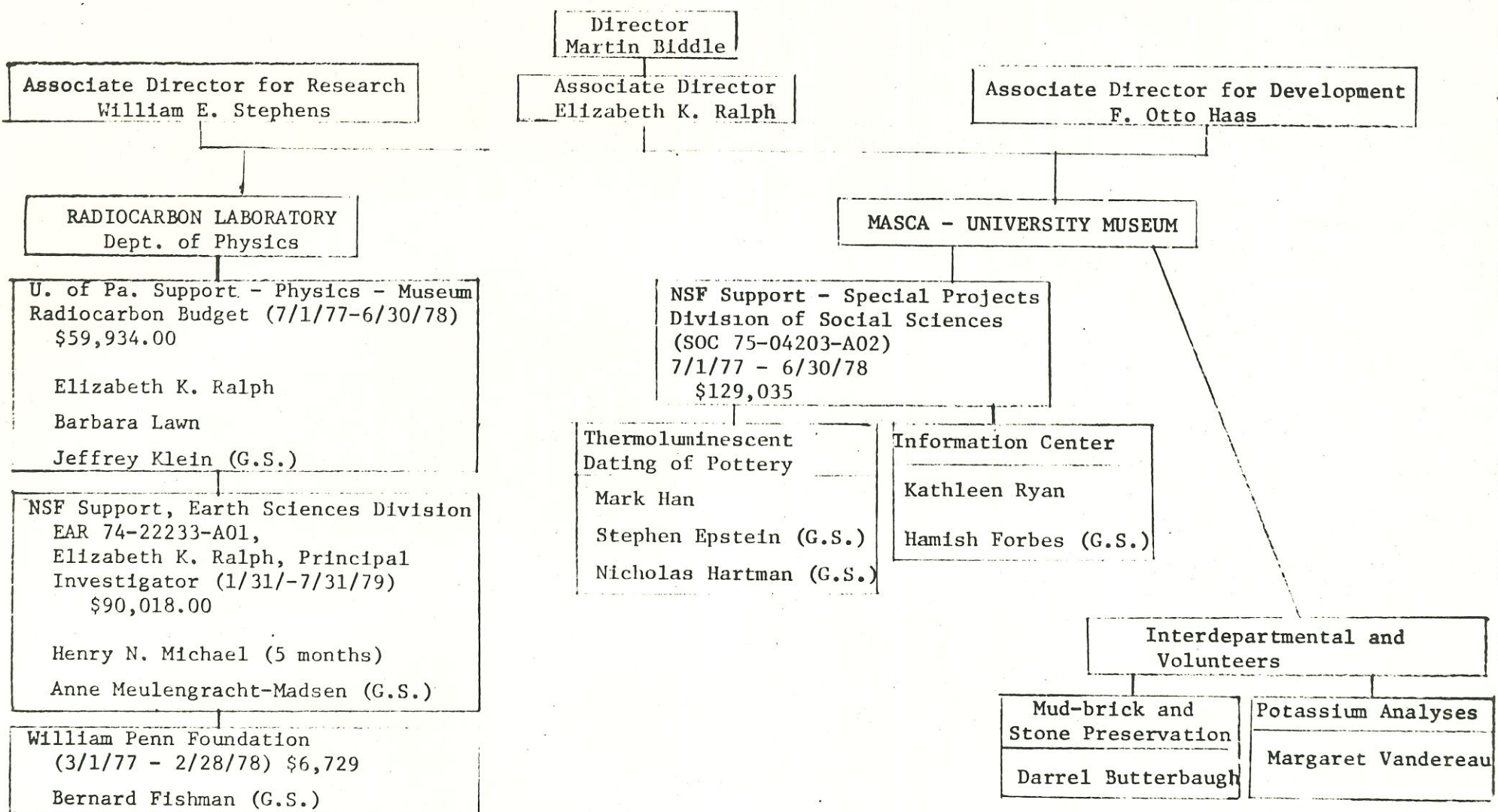
June 1974

MASCA PERSONNEL INCLUDING RADIOCARBON LABORATORY



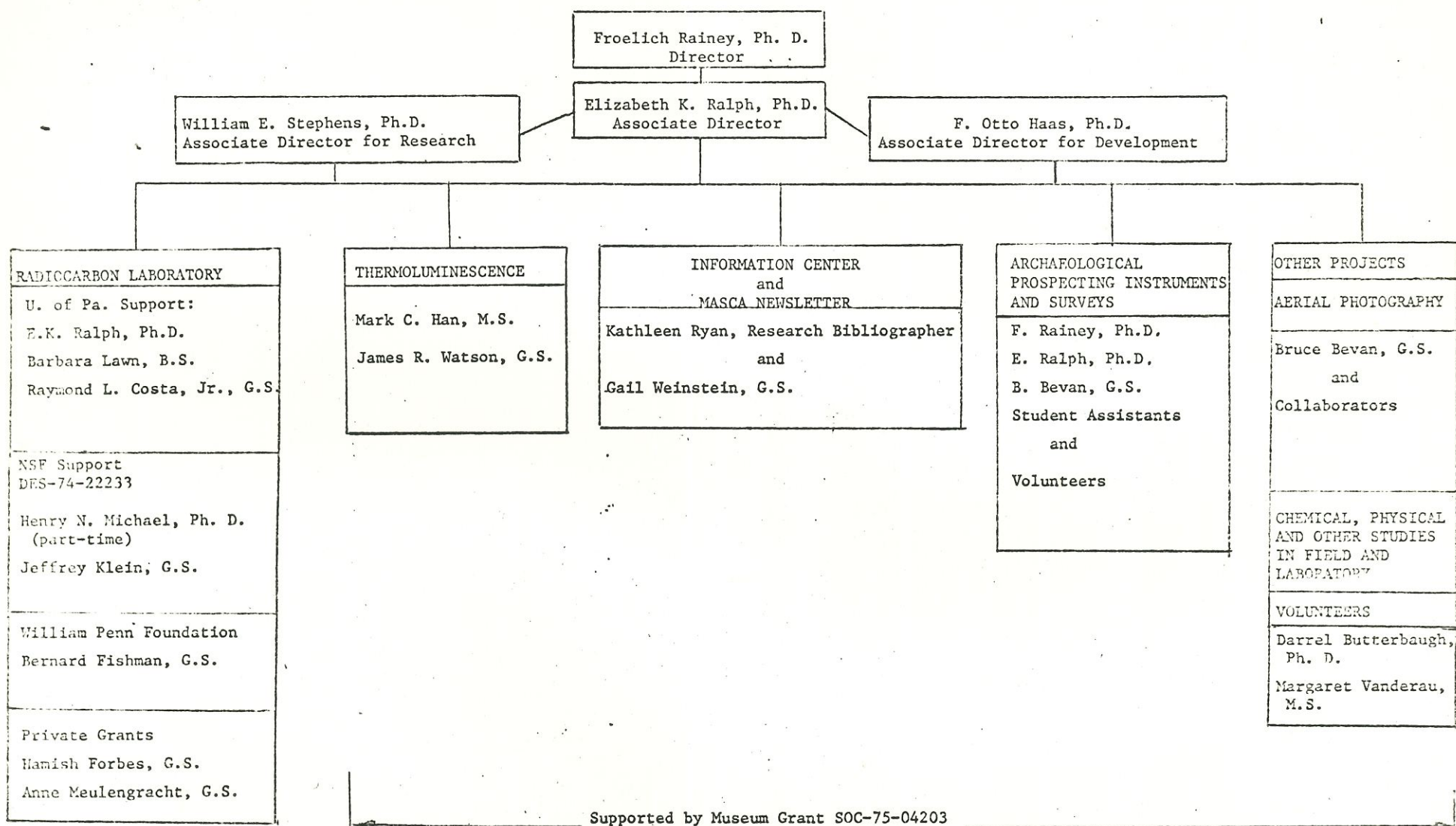
NOTES: 1) G.S. = Graduate Student
 2) The U. of Pa. and NSF grants include funds for supplies, equipment, services, etc. as well as for salaries.

MASCA PERSONNEL INCLUDING RADIOCARBON LABORATORY



NOTES: 1) G.S. = Graduate Student
 2) The U. of Pa. and NSF grants include funds for supplies, equipment, services, etc. as well as for salaries.

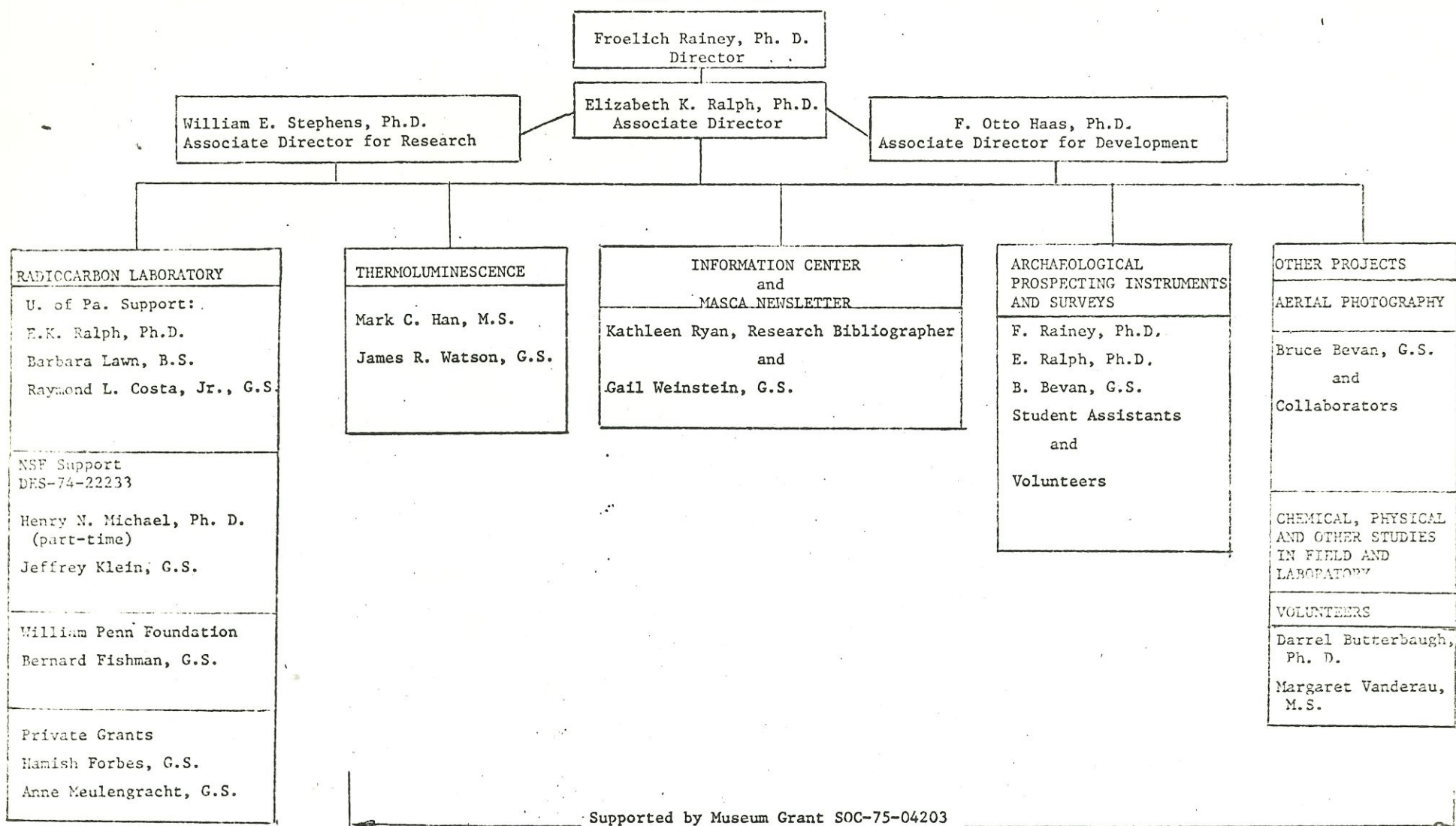
MASCA PERSONNEL



G.S. - Graduate student
1/2-time in academic year
Full-time for 3 summer months

FIG. 2. Block Diagram of MASCA Personnel

MASCA PERSONNEL



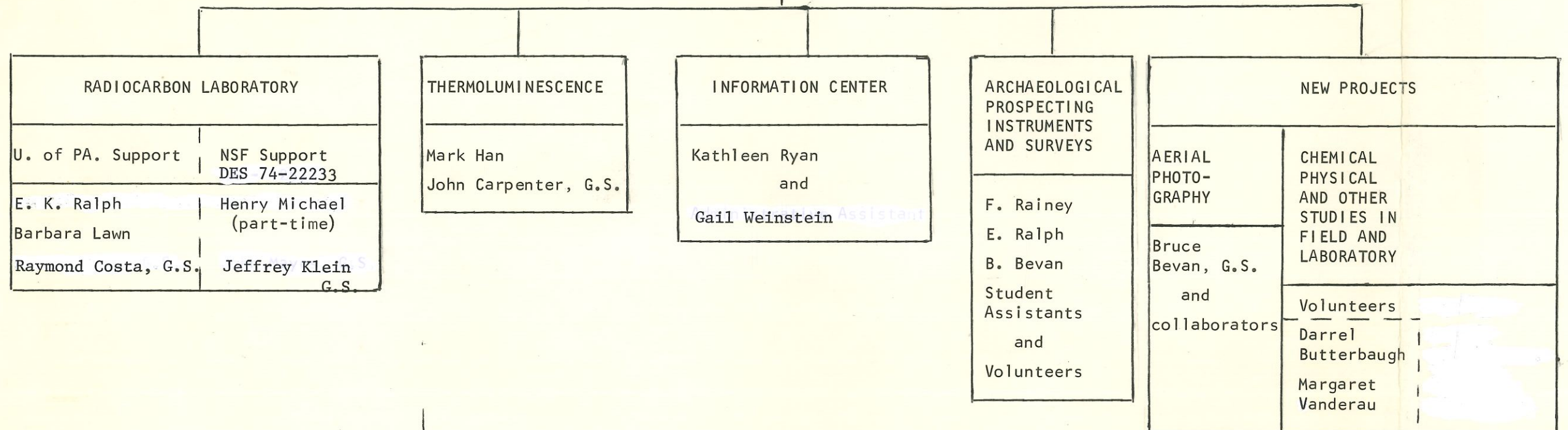
G.S. - Graduate student
1/2-time in academic year
Full-time for 3 summer months

FIG. 2. Block Diagram of MASCA Personnel

MASCA PERSONNEL

F. Otto Haas
Director

Elizabeth K. Ralph
Associate Director



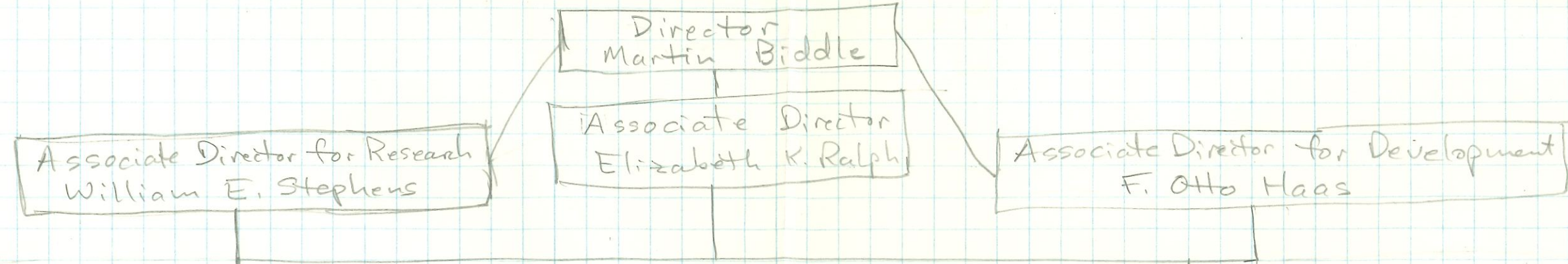
← Was Supported by Museum Grant NSF-GS-36308X Support Now Needed →

G.S. = Graduate Student
1/2-time in academic year
Full-time for 3 summer months

January 1975

MASCA PERSONNEL INCLUDING RADIOCARBON LABORATORY

5/19/77



RADIOCARBON LABORATORY
Dept. of Physics

MASCA - University Museum

U. of Pa. Support - Physics - Museum
Radiocarbon Budget (7/1/77 - 6/30/78)
\$48,400

Elizabeth K. Ralph	\$22,250
Barbara Lawn	\$14,800
Jeffrey Klein (G.S.)	\$5,250
Supplies - U. of Pa.	\$3,000
Supplies - University Museum	3,100

Requested from NSF - Special Projects
Division of Social Sciences
\$129,035
(5/1/77 - 4/30/78)
[See detailed list]

NSF Support, Earth Sciences Division
EAR 74-22233-A01,
Elizabeth K. Ralph, Principal Investigator
(1/31/77 - 7/31/79)
\$90,018

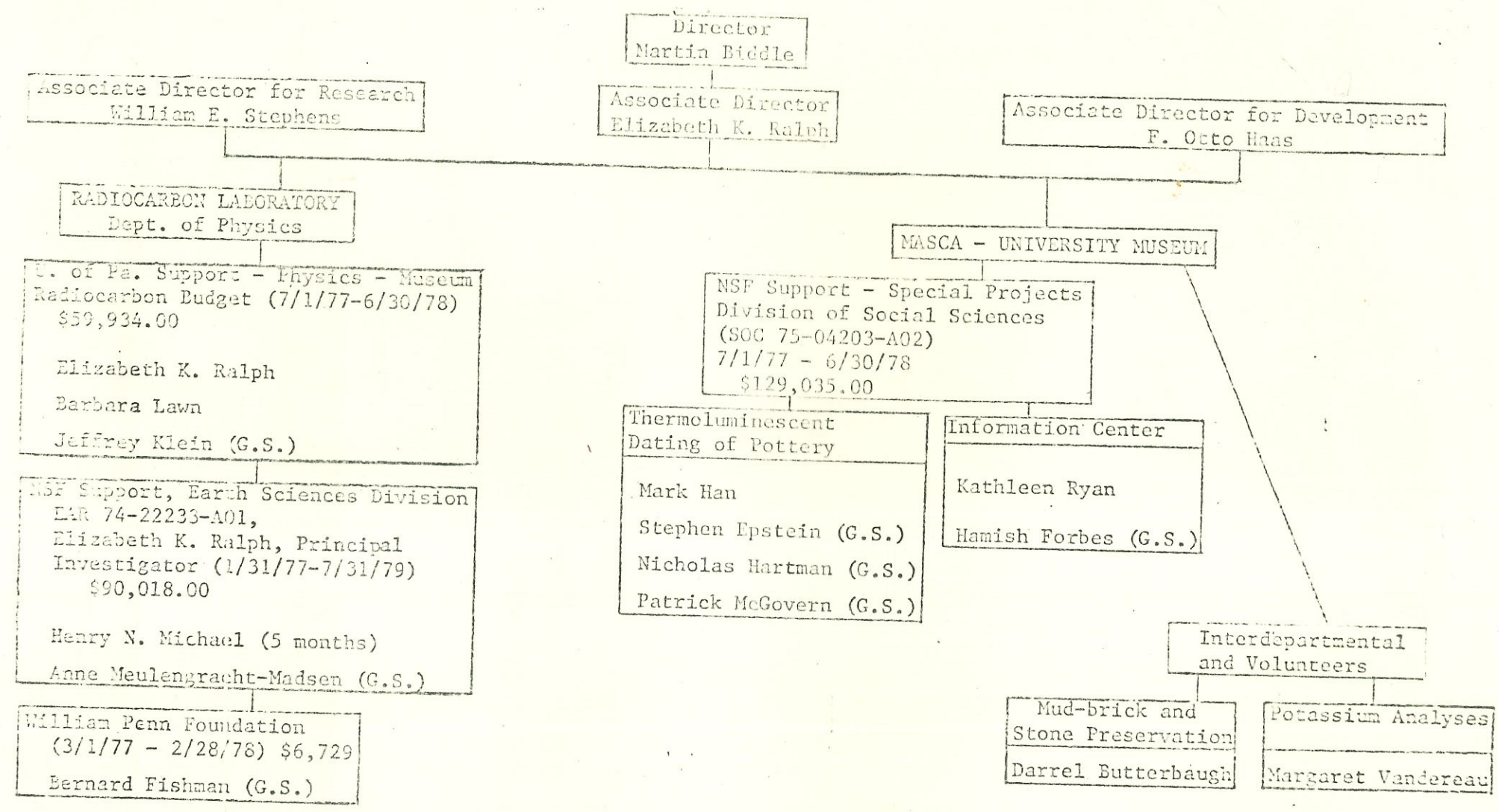
Henry N. Michael (5-months)	\$11,400
Anne Meulengracht-Madsen (G.S.)	\$5,250
Equipment, travel supplies, employee benefits, and 51% overhead on all but equipment	\$73,368

William Penn Foundation
Bernard Fishman, G.S. \$5,250
\$6,729

G.S. = Graduate Student

TABLE I.
MASCA PERSONNEL INCLUDING RADIOCARBON LABORATORY

5/19/77



NOTES: 1) G.S. = Graduate Student
2) The U. of Pa. and NSF grants include funds for supplies, equipment, services, etc. as well as for salaries.